

## Trimings

**The person who said** that necessity is the mother of invention surely must have been referring to golf course superintendents when he made that famous claim. We've seen more improvised tools and pieces of equipment redesigned and concocted for a specific job by enterprising superintendents than any other group. Well, all you inventors take notice. To meet with changing requirements in the current marketplace, U.S. companies are constantly looking to introduce new products in order to maintain leadership. A constant search has been underway to develop or locate these products. Over 50 percent of the items being sold today will be obsolete within the next five years. Sources also claim that industry has turned to the independent innovator to help supplement the billions of dollars being spent on research and development. Some companies have established departments for the sole purpose of reviewing and evaluating submissions from outsiders. So, to accommodate all you would-be Edisons there's a new brochure available free of charge to inventors. For your copy write: "The Link Between the Inventor and Industry," One Biscayne Tower, 2 South Biscayne Blvd., Miami, Fla. 33131.

**Much has been said** about slow play on the golf course and what to do about it. But a recent slow play incident on a Washington, D.C. area public course may be the first to have brought serious injuries and police action to the golfers involved. According to reports from National Golf Foundation, a foursome insisted on playing through and so drove their balls close to the foursome ahead. Then, it is alleged, one of the players in the lead group drove one of the balls from the trailing group into the woods. The trailing group then drove their golf cars to where the lead group was playing and demanded the lead group retrieve the ball from the woods. A fracas followed that left one golfer hospitalized with a fractured skull,

another suffered severe lacerations requiring seven stitches. Also included in this melee were three broken golf clubs used to speed-up play. Who said golf was a gentleman's game?

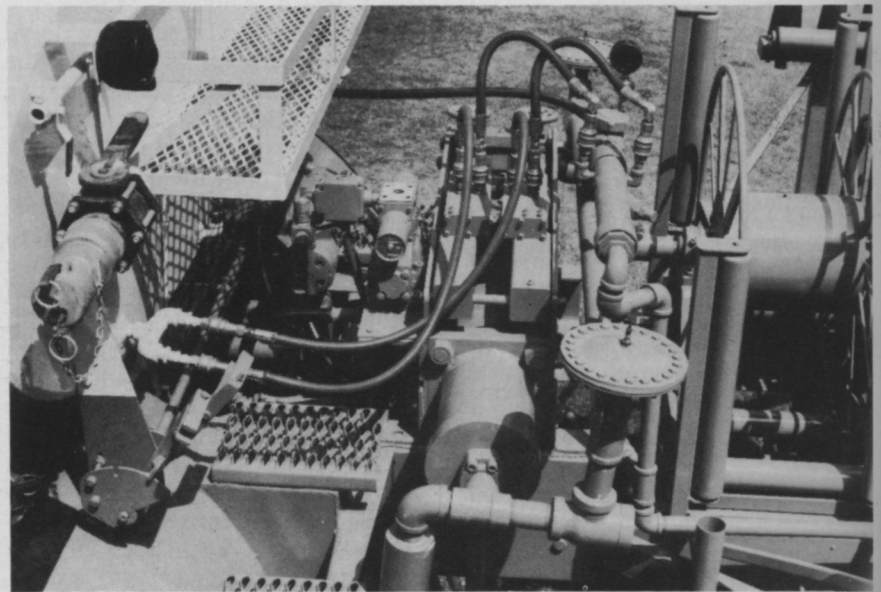
**Zipp-Penn** recently released an expanded chain saw catalog. It offers chipper chain, safety chain and skip-tooth chain in loops and reels to fit practically all current popular makes of saws. Ripping chain, full-house chain and pond and deck chain are available in reels. Other chain saw equipment is also pictured and priced in the new publication. A copy of the catalog is free on request from: Zip-Penn Catalog Office, Box 43073, Middletown, Ky. 40243.

**Recent predictions** placed Dutch Elm Disease in California in three to five years. Unfortunately, the disease is already there, being detected in Sonoma County, and Napa County, some 35 miles north of San Francisco and also on the peninsula, south of San Francisco, in Santa Clara County. The infected counties have put into operation the DED Project, in areas of the disease survey, identification, tree removal, treatment, trapping and quarantine. In addition to county participation, the project includes 12

permanent and 35 seasonal state employees. The State's DED lab was also recently moved from Sacramento to Napa County. A total of 481 diseased and exposed Elms have been removed and 331 trees have been sprayed and over 100 woodpiles have been fumigated. Traps have also been set to capture the Bark Beetle.

**Chief of the U.S. Forest Service,** John McGuire, called for Americans to "dedicate ourselves to expanding our public and private forests as well as managing better the forest lands we have. This requires the close cooperation of business, industry, government and individual citizen."

**U.S. District Court** in Lincoln, Neb., ordered Morrison-Knudsen, Inc., Boise, Idaho, to give back pay with interest to five of the company's Sutherland, Neb., workers who had been discharged after they walked off their jobs because of hazardous working conditions. In a judgment, filed by the court, without contest by the company, Morrison-Knudsen was permanently enjoined and restrained from violating provisions of OSHA, that protects employees against discrimination for exercising their rights under the act.



*In the May 1975 issue of WEEDS TREES AND TURF we ran an article on John Behey's answer to pesticide safety — the proportional mixing spray rig. Since our interview with Behey, he has made some design changes and signed up the Weyer Engineering and Manufacturing Co., Enumclaw, Washington, to produce the unit for the commercial market. Pictured above is a Weyer manufactured unit. Behey hopes to have his new models ready for sale before 1976.*