

Managers Guide To Equipment and Supplies

Alphabetical Listing of Suppliers

Making the right decision in selection of equipment and supplies is one of the most important jobs of a manager in the Green Industry. Besides being an important item on an investment budget, equipment must also be maintained. This calls for wide initial selection, correct accounting procedures for depreciation, effective preventive maintenance and proper major maintenance when needed.

Perhaps the most important step is in selection. It is with this in mind that WEEDS TREES and TURF presents this 1975 Green Industry Manager's Guide to Equipment and Supplies.

The guide is in two parts. Manufacturers and their equipment and supplies are listed first. **Advertisers are in bold face type.** Product groupings and manufacturers of a particular item are listed second. Because manufacturers add and delete product lines, change names and generally never remain static, omissions of certain manufacturers or product lines are unavoidable. Your comments and suggestions are invited to help improve future editions.

A

AMF Western Tool Division, 3811 McDonald Ave., Des Moines, Iowa 50313

Mowers, rotary
Tractors, AMF 1281 and AMF 1293
Riding mowers, rotary

A.O.A. Research & Development, Inc. (P.O. Box 6081C) 608 Virginia Dr., Orlando, Fla. 32804

Underwater weed cutter, manually operated, spring steel, serrated, doubleaction blades cut weeds with forward and backward stroke

Ace Pump Corp., 1650 Channel Ave., Memphis, Tenn. 38113

Pumps, centrifugal
Pumps, nylon roller
Pumps, diaphragm

Acme Products, 1201 Kalamazoo Street, South Haven, Mich. 49090

Masks, Dust, Gas
Respirators

ADS—Advanced Drainage Systems, 1880 MacKenzie Dr., Columbus, Ohio 43220

Corrugated Plastic Drainage Tubing, sizes of tubing and fittings from 4 inches to 18 inches in diameter

Adventure Line Mfg. Co., 3333 Main St., Parsons, Kansas 67357

Astro Hook, crane/ladder, truck mtd., hydraulic
Highworker, platform lift, truck mtd., hydraulic

Tailgate, 1,000 lb. cap. pickup mtd. tailgate, all of our equipment is designed for use on pickup trucks

Aeroquip Corporation, 300 S. East Ave., Jackson, Michigan 49203

Hose and fittings, hydraulic, fuel, air, oil, water; pressure from low to super high

Agresults, Inc., 5501 S.W. 74 St., Miami, Florida 33143

Hydrofyer Umbilla-Kal Injection System, Airifyer Adaptor for pressurized injection of pesticides, fertilizers or other chemicals into greens or tees

AgTronics Mfg. Co., 1560 State St., Barstow, Calif. 92311

Soil moisture meter

Air-Lec Industries, Inc., 3306 Commercial Ave., Madison, Wisconsin 53714

Air-Lec, aquatic weed cutter
Air-Lec, aquatic weed rake

Alcoa Aluminum Co. of America, Alcoa Building, Pittsburgh, Pa. 15219

Irrigation pipe

Allis-Chalmers, 1205 S. 70 Street, Milwaukee, Wisconsin 53211

Model 620 tractor, 19 1/2 hp with tires rear 34.0"
Model 615 backhoe-loader, Allis-Chalmers 56 hp gasoline engine
Model 816 backhoe-loader, Perkins diesel engine 83 hp
Model 918 backhoe-loader, Allis-Chalmers diesel 84 hp engine
Mower (sickle bar), length 56" tractor (620) mounted
Rear mtd. Roto-Tiller, 48" size for 620 tractor
Rotary mower, 48" swath for 620 tractor

Amchem Products, Inc. Brookside Avenue, Ambler, Pennsylvania 19002

Meter Miser, liquid spreader gives precision application of Weedone liquid herbicide products without the need for calibration
Directa-Spra, sprayer end unit

American Arborist Supplies, Concord Industrial Park, Concordville, Pa. 19331

Arborist supplies
Chippers, Chain Saws, Hand saws, Climbers Rope, Pruning Equipment, Hardware (screw rod, cable, thimbles)

American Excelsior Corp., 850 Ave. H, East Arlington, Tex. 76010

Erosion Control Products
Soil Retention Products

American Hose & Reel Co., P.O. Box 639, Marland, Okla. 74644

Thermoplastic spray hose with working pressure of 250, 400 and 800 PSI; 1/4, 3/8, 1/2, 3/4-inch sizes
Fertilizer applicator tubing; 1/4, 3/8, 1/2, 3/4-inch sizes
Hose reels; small, 300 ft., 1/2-inch hose, 1000 P.W.P.; large, 300 ft., 3/4-inch; adjustable drag

American Lincoln Corp., 518 S. St. Clair, Toledo, Ohio
Welders

American Optical Corp., 14 Mechanic St., Southbridge, Mass.
Respirators, protects against harmful, highly toxic sprays, dusts and vapors in insecticides, fertilizers, etc.
Eye protection goggles, protects against impact or dust & chemicals resulting from spraying, dusting, cutting, etc.
Available with clear or sunglass lenses, plain or coated for anti-fogging.
Hard caps and hats, head protection against falling limbs or branches — Meets Amer. Nat'l Std. Z89.1-1970
Hearing protectors, protects hearing from damaging or irritating noises of tractors, sprayers, power saws, etc.

Ametek, Plymouth Products Division, 502 Indiana Ave., Sheboygan, Wisc. 53801
Superflexon plastic boxes, plastic irrigation valve boxes with turf green covers
Meter pits, plastic

Amoco Chemicals Corp., Industrial Products Div., 1530 Commerce Dr., Stow, Ohio 44224
Polyethylene pipe and fittings for irrigation
PVC pipe and fittings for irrigation
Corrugated plastic drainage tubing
Styrene rubber plastic drain pipe and fittings

Andrasko Engineering Co., P.O. Box 4633, Santa Barbara, Calif. 93103
The Meter Matic, fertilizer injector for irrigation systems

Aqua-Dial, P.O. Box 1325 Newport Beach, Calif. 92624
Turf irrigation Equipment
Automatic valves, hydraulic and electric, remote control
Automatic controllers
Sprinklers, gear driven, pop up, vandal resistant, lawn and garden

Aquamarine Corp., Box 616, 1116 Adams, Waukesha, Wisc. 53186
The Aqua-Trio, 3-piece aquatic weed harvesting system (harvester, transport and shore conveyor)
The Sawfish, an aquatic weed cutter and front end loader (for weed, trash and/or oil spill cleanup on water)
Design and prototyping service for specialized equipment for unusual or extraordinary weed problems

Aqua-Mech Co., 2609 Cedar Springs Rd., Dallas, Tex. 75201
Aqua Mech, conversion kit from manual valve and key to automatic timed heads

Arctic Mizer Mfrs., Inc., 2116 E. Norse Ave., Cudahy, Wis. 53110
Arctic Mizer, spreader, self-powered; vacuum-thatcher, self-powered

Ariens Company, 655 W. Ryan Street, Brillion, Wis. 54110
Ariens Emperor, riding mower — 30" and 38" rotary; 8 hp
Ariens Fairway, riding mower — 26" rotary; 5 and 7 hp
Ariens S-8 Tractor, lawn tractor — 36" rotary; 8 hp
Ariens Lawn Vac, lawn vacuum
Ariens Trac-Team, 26" rotary mower, lawn vacuum, rotary broom on one 8 hp tractor

Armor Metal Products, P.O. Box 822, Helena, Montana 59601
Anderson Rock Picker, heavy-duty rock removal machine for use in seedbed preparation

Asplundh Chipper Co., Div. Asplundh Tree Expert Co., Blair Mill Road, Willow Grove, Penna. 19090
Chipper, high speed, tapered blade
Forestry truck, Models L-40, 42, 45, 50; dump body, 12-inch chipper, aerial bucket
Brush hooks

Arps Corp., 1711 Wisconsin Ave., New Holstein, Wis. 53061
Arps 728, backhoe, tractor-mounted
Arps 730, backhoe, tractor-mounted

Arps blades and rakes, landscaping rakes and utility blades
Johnson "Work-Horse", front-end loader, garden tractor-mounted
Johnson "Terra-Comb", combination thatcher and power-rake
Arps mini-blades and rakes, blades and rakes for garden tractors

Aurora Pump, 800 Airport Rd., Aurora, Ill. 60542
Aurora pumps, irrigation pumps centrifugal and turbine pumps

Austin Products, Inc., 1000 Singleton, Dallas, Texas 75221
Servis Saturn, 5 rotary mower; 6 rotary mower; 7 rotary mower
Servis Cyclone, 60 rotary cutter; 72 rotary cutter
Servis Flex, 15 rotary cutter
Servis Gold Star, post hole digger
Servis landscape rakes, box scrapers

Auto Hoe, Inc., S. 3rd St., De Pere, Wis. 54115
Auto Hoe, power hoeing machine 3.4 & 5 (HP)

Avco New Idea, Farm Equip. Div., 420 S. First St., Coldwater, Ohio 45828
Tractors:
EGT-200, battery powered, 18 hp class
EGT-150, battery powered, 16 hp class
EGT-120, battery powered, 14 hp class
EGT-100, battery powered, 10 hp class
EGT-80, battery powered, 8 hp class
35 attachments and accessories

Avco Ezee Flow, Coldwater, Ohio 45828
Spreaders, gravity drop, broadcast, fertilizer
Seeders, broadcast
Mowers, rotary
Applicators, granular, insecticide-herbicide

B

B.A.G. Corporation, 9443 Sherwood Glen, P.O. Box 28403, Dallas, Texas 75228
Taicon Container, plastic, collapsible, reusable shipping container for handling bulk shipments
Super sack container, one-ton disposable container

BMB Company, Inc., North Vermont at 9th, Holton, Kansas 66436
Utility, 5' tractor operated rotary mower
Special, 6' tractor operated rotary mower
XL and Brute, 5' and 6' tractor operated rotary mower
Fury, 7' tractor operated rotary mower
Twin Brute 120 and 144, 10, and 12, tractor operated rotary mower
Twin Fury 144 and 160, 12 and 13'4" tractor operated rotary mower
Mighty Mower, 15, 18' and 20' flexible tractor operated rotary mower
Suburban 48, 48" trailing rotary mower w/ 8 hp gas engine
BMB Flail Mowers, 72", 90", 144" and 180" tractor operated

Bachtold Bros. Inc., 619 N. Center St. Forrest, Illinois 61741
Rotary mower 8 h.p.
Tuff-Bee "30", Rotary mower rider 8 h.p.

Badger Dynamics, Inc., P.O. Box 305, 1221 S. Park St., Port Washington, Wisconsin 53074
"Bucky" Forklift, outdoor forklift 2500 lb. capacity
Models 6035/6045, Towable rough terrain forklift 6000 lb. capacity

Baker Equipment Mfg. Co., 1710 High Point Ave., Richmond, Va. 23230
Aerial towers, mobile equipment
Derricks, mobile equipment

Bartlett Mfg. Co., 3009 East Grand Blvd., Detroit, Mich. 48202

- Saws, tree, combination pruner and saw
Saw, pruning, hand
Saw sheaths
Tree bracing materials
Belts, safety
Tree paints
Trimmer, tree (hydraulic & pneumatic)
Shears, lopping (two hand)
Pruners, (long pole) fiberglass
Saws, (long pole) fiberglass
Rope, climbing
- Bar-Way Mfg. Co.**, P.O. Box 640, Stamford, Conn., 06904
Spray guns, long-range, worm-gear control on end of barrel
Swivel adapters
Inigatorator guns — liquid fertilizers
Suction refillers strainers
Couplings
- Beatty Trailers**, Box 1027, Burlington, N.C., 27215
Beatty Trailers, self-contained, hydraulic dump; capacities 2, 3, 5, 9, 13 yard; transport trailers, 6 to 30,000 lb. capacity; tag-a-long and goose neck
- Beck Manufacturing Company**, P.O. Box 752, Auburn, Alabama 36830
Lawn-O-Matic, turf grass planter, plugger — sprigger
Sod-O-Matic sod cutter, sod cutter cuts 3 16" strips at one time
Sod-O-Matic sod harvester, Beck's big roll — sod harvesting and laying system
- Beeco Products Co.**, Industrial Park, Fort Washington, Pa. 19034
Beecomist, spray head for LV and ULV agricultural and insecticide spraying for aerial or ground equipment, rotary type, 12V DC or 24V DC, three models
- Bell Helicopter Co.**, P.O. Box 482, Fort Worth, Texas
Helicopters
- Bemis Company, Inc.**, 800 Northstar Center, Box 215, Minneapolis, Minn. 55402
Bags and liners, plastic
Bags, tree balling, litter, grass catcher
Twine, tying
- Wm. Bergman Co.**, 1335 M-15, Reese, Mich. 48757
Service, stone picking, seeding, land preparation
- Berkeley Pump Co.**, 829 Bancroft Way, Berkeley, Calif. 94710
Pumps, electric and gasoline; irrigation, one to forty hp, higher hp available, centrifugal and turbine
- Bermuda King, Inc.**, Rte. 1, Okarche, Okla. 73762
Sprig harvesters, 20", 28", 42", 30 to 60 hp, 500 to 1,000 watt an hour rating
Sprig planters, 1, 2, 3 and 4-row, large capacity
Fairway spriggers, 2 to 10' width, large capacity
- Bete Fog Nozzle, Inc.**, Greenfield, Mass.
Stubbies, nozzles, mini-sized, three cone angles, flow rates from 3 to 300 gpm
Spray nozzles
Spray applicators
Fog spray nozzles
- Big Brute Turf Cut**, Div. of Finney Frocks, 18035 Georgia Ave., Olney, Md. 20832
Big Brute turf cutter, sodcutter
- Billy Goat**, P.O. Box 229, Grandview, Mo. 64030
Billy Goat, suction sweeper
Winro, leaf blowers Shred-N-Bag, shredder
Chippit, chippers, vacuums
- Black & Decker** 701 E. Joppa Road, Towson, Md. 21204
Lawn mowers, electric rotary
Grass shears, battery powered (re-chargeable)
Hedge trimmers, 13" to 22" Black Knight—both electric and battery
Lawn edgers, electric
Patio vacs, 5 and 10 gallon dry and 8 gallon wet/dry
Garden hose connectors, complete line of hose fittings
- John Blue Co.**, P.O. Box 1607, Huntsville, Ala. 35807
Spreaders, fertilizers (liquid, dry, bulk)
Tanks, spray and fertilizer
Sprayers, mounted and pull type, rights-of-way
G-1000 tractor (16 h.p.) rear engine, agricultural type. Attachments include rotary mower, cultivator, harrows, etc.
L-900 Metering Pump, injection of liquid fertilizer for irrigation systems
Cotton Module Maker, 24' and 32'
Cotton Module Trailers, straight tongue or gooseneck, 24' and 32'
- Blue Bird International, Inc.**, 2778 So. Tejon, Englewood, Colo. 80110
Bluebird, lawn combers, A/K/A thatchers, dethatchers, lawn rakes, rnovators and vertical mowers, 4 hp, 5 hp, 7 hp
Bluebird "1500", engine hoists, knockdown type
Bluebird "3000", engine hoists, towable type
Bluebird "Yardbird", utility crane
Bluebird, engine stands
Bluebird "F .20B", lawn comber, compact type, 5 hp
- Bombardier limited** Valcourt, Quebec, Canada
Muskeg brush cutter, tracked vehicle (90 hp) equipped with front-mounted hydraulic rotary brush cutter
Muskeg carrier, tracked vehicle (90 hp) with spraying equipment
- Boss Irrigation**, P.O. Box 191, San Angelo, Texas 76901
Irrigation sprinkler
- Bowie Industries Inc.**, P.O. Box 931, Bowie, Texas 76230
Hydro mulcher—used in sprigging, seeding, mulching, fertilizing, insect control and weed control 350, 500, 800, 1,000, 1,500, 2,500 and 3,000 gallon tanks. Trailer or skid-mounted
Agri-sprayer, multi-purpose low volumn 400 gallon sprayer, fiberglass tank trailer-mounted, remote hydraulic operation. P.T.O.
- Bridgeport Implement Works, Inc.**, P.O. Box 491 WT, 60 Rachel Drive, Stratford, Conn. 06497
Pixtone, trailer-type—self-powered, picks stone ¾ to 9-inch diameter
- Briggs & Stratton Corp.**, P.O. Box 702, Milwaukee, Wis. 53502
Engines, 4-cycle, single cylinder, gasoline
- Brighton By-Products Co., Inc.**, P.O. Box 23, New Brighton, Pa. 15066
Weed Chek, fiberglass landscape mat
Triton, planters & benches, fiberglass
Bridgestone, high pressure spray hose
- Brillion Iron Works**, 200 Park Ave., Brillion Wis. 54110
Mow-Safe, safety flail mowers (72" and 88")
Swing-Cut, rotary mower (60" and 72")
Turf-Maker, seeder for sod-growers
Sure-stand, landscape and agricultural seeders
Terra-Scraper, landscape rakes
Versa-Mower, 180" rotary cutters
- Brinly Hardy Co., Inc.**, P.O. Box 1116, Louisville, Ky. 40201
Brinly attachments, gardening and landscape equipment for tractors equipped with sleeve type hitch
Brinly implements, gardening and landscape equipment for tractors equipped with Cat. "O" 3-pt. hitch
Brinly lawn maintenance equipment, pull behind equipment such as roller, aerators, broadcast spreaders
- Brouwer Turf Equipment Limited** R.R. No. 1, Keswick, Ontario, Canada
Sod harvester, attached to a 35-40 hp farm tractor
Frate Lift, 3-wheeled, self loading forklift
- The Broyhill Company**, No. Mkt. Sq., Dakota City, Nebr. 68731
Sprayer, skid-mounted, mechanical agitation
Sprayers, trailer mounted, mechanical agitation
Sprayer parts: pumps, hose, tanks, trailers, nozzles, handguns, spring boom

Buckner/Johns Manville Irrigation, Greenwood Plaza, Denver, Col. 80217

Full line irrigation, automatic electric controllers, impulse sprinklers, valve-in-head sprinklers, quick couplers, pop-up sprinklers, hydraulic controllers, valves

Buffalo Turbine Ag. Equipment Co., Industrial Place, Gowanda, N.Y. 14070

Sprayer, mist blower, ULV hand carried, sonic ULV, mist blower, turntable
Sprayer-duster, mist duster, combination
Duster, dust only
Sprayer-duster, back pack, power take-off

Bunton Co., 4304 Poplar Level Rd., Louisville, Ky. 40213

Mowers, rotary
Lawn and turf equipment

C

E. L. Caldwell & Sons, Inc., 3204 Agnes St., P.O. Box 9316, Corpus Christi, Tex. 78408

Interstate, rotary mower, 15 ft.
Challenger, rotary mower
Manta Ray Interstate, rotary mower, 10 ft.
Brush Beaver, rotary mower, 5 ft. or 6 ft.
Manta Ray, Jr., rotary mower, 16 ft.
Contur Flail, heavy-duty, flexible flail, 15 ft., 3 sections
Shark-go, flail-type shredder, 90 inches
Barracuda, lift-type flail mower, 72-inch

CareTree Systems, 7030 Huntley Rd., Worthington, Ohio 43085

CareTree transplanter, tree transplanter for installation on agricultural or industrial tractors or 4-wheel loaders

Cast Iron Pipe Res. Assoc., 1211 W. 22nd, Oakbrook Exec. Plaza, Suite 23, Oakbrook, Ill. 60521

Cast iron pipe for irrigation

Campbell-Hausfeld Co., Sales Ave., Harrison, Ohio 45030

Lombard CS1500 (electric), saw, chain, electric, 12-inch bar, 12 amps
Lombard Pony (CS2500), saw, chain, gasoline, 12-inch bar, 6½ lbs.
Lombard Comango (CS3500), saw, chain, gasoline, 16-inch bar, manual oiler
Lombard Super Comango (CS3501), saw, chain, gasoline, ½ "anti-vibe", auto oiler
Lombard Super Lightning (CS3502), saw, chain, gasoline, ½ "anti-vibe", auto oiler
Lombard Super Lightning Anti-Vibe (CS3503), saw, chain, gasoline, full "anti-vibe", auto oiler, decompression valve

Cascade Corporation, P.O. Box 25240, Portland, Oregon 97225

Cascade Knuckleboom, truck mounted hydraulic crane that stows in less than 2' of bed space. Capacities to 9,650 pounds at 5'

J I Case, Outdoor Power Equipment Division, Winneconne, Wisconsin 54986

Snow Blowers, J81 (32") J80 (38") J84 (48")
Compact Tractors, 108 (8 hp) 118 (8 hp) 210 (10 hp) 220 (10 hp) 222 (12 hp) 224 (14 hp) 444 (14 hp) 446 (16.5 hp)
Loader Tractors, 644 (14 hp) 646 (16.5 hp)
Rotary Mowers, J41 (34") J40 (38") J44 (44") J46 (48")
Dump Carts
Utility Blades, G51 (38") H50 (44") H54 (54")
Rotary Tillers, H70 (41") J72 (32")

Century Engineering Corporation, 221—4th Ave. S. E., Cedar Rapids, Iowa 52401

Sprayers, trailer, tractor, jet or mechanical agitation
Washers, high pressure
Heaters, portable oil and gas

Certain-Teed/Daymond Co., 230 Collingwood, Suite 150, Ann Arbor, Mich. 48103

Certa-Flex, corrugated plastic tubings of various diameters for land drainage and trickle — irrigation

Certain-teed Products Corp., P.O. Box 860, Valley Forge, Pa. 19482

Fluid-Tite™ double gasket asbestos-cement and PVC pipe, irrigation; fittings, irrigation pipe.

Champion Brass Mfg., 1460 N. Naud St., Los Angeles, Calif. 90012

Champion 466, 466P, anti syphon valves
Champion 17, 18, 19, lawn sprinklers, flush, popup, shrub
Champion E.A., C.E.A., electric adapters

The Champion Company, 400 Harrison St., Springfield, Ohio 45501

Doo-All Roll-Dump Trailer, 1 and 2 cu. yd. hopper capacities
Doo-All End-Dump Trailer, 3 cu. yd. hopper, hydraulic dump

R. E. Chapin Mfg. Works, Inc., 29 Liberty St., Batavia, New York 14020

Dusters, flamethrowers, sprayers

Charles Machine Works, Inc., Ditch Witch Division, P.O. Box 66, Perry, Okla. 73077

Ditch Witch trenchers, 7 hp to 195 hp, vibratory plows, backhoes, trencher mounted trailers, horizontal boring units

Clarke Div., Clarke-Gravelly Corp., 1849/75 Estes Street, Muskegon, Michigan 49441

Litter Vac, indoor/outdoor vacuum for picking up large debris from grounds (5 hp Tecumseh engine)
Space Sweeper, Models T-71-2-3 power sweeper (gas, elec., battery)
Airlift, sweeper (the Clarke revolutionary regenerative air principle)

Clark Equipment Trailer Division, P.O. Box 410, Michigan City, Indiana 46360

Clark Equipment mini trailers, a 22 dual axle and 30 ft. tri-axle flatbed trailers designed for use with 5th wheel connecting pick up trucks.

Clinton Engines Corporation, Clark & Maple Streets, Maquoketa, Iowa 52060

Engines, gasoline

Club Car, Inc., A Johns-Manville Company, P.O. Box 1625, Augusta, Georgia 30903

Caroche, four-wheel electric golf car (2 passengers)
Caroche Utility Truck, four-wheel electric utility truck (2 passenger and 500 lb. load)
Caroche Personnel Carrier, Four-wheel electric (4 passengers)
Caroche Islander, combination commuter & golf car

Conaway, Inc., P.O. Box 303, Lawrence, Pa. 15055

Chain saws, portable generators, gasoline hedge trimmer, portable brush cutter, lawn and garden tractors, 7 to 16 hp., riding mowers, lawn mowers 2 and 4 cycle, lawn and garden tractors 8-16 hp., composters, garden tillers, riding mowers 5-8 hp., vacuum blowers, grounds keeper, high wheel rotaries

Container Development Corp., 424 Montgomery St., Watertown, Wisconsin 53094

Golf course equipment
Lewis line, ball washers, flag poles, tee markers, cups, cup cutters, flags, rakes, etc.

Cintree Sales, Inc., P.O. Box 129, Columbus, Wis. 53925

Rice Paddy Daddy, sprayer
Boom Dye-Marker, marks areas treated

Wat Sol Oil, lubrication, preservative, storage oil
Auger, Model S.S., 4-inch, 12 volt for materials handling

Conwed Corporation, 332 Minnesota St., St. Paul, Minn. 55101

Conwed Hydro Mulch®, a wood fiber mulch used in hydro seeding
Conwed Economy Erosion Control Netting, tough plastic net used over loose mulches in high erosion areas

Cooper Mfg. Co., 422 S. First Ave., Mardhaltown, Iowa 50158

Edgers, gasoline powered
Mowers, reel, walking
Champion 21, greensmower

Corona Clipper Co., 14200 E. 6th, Corona, Calif. 91720

Tree and ornamental care and pruning equipment
Grass shears, anvil pruners, hand pruners, lopping shears, pole pruners, pole saws, hand saws & pruning paint

Correct Mfg., Hughes Keenan Div., P.O. Box 689, Delaware, Ohio 43015

Sky-Worker, aerial bucket—reaches up to 71 ft., horizontal to 45 ft.

Coursigns, Inc., 6500 N. Clark St., Chicago, Ill. 60626

High impact plastic stakes and golf course signs, cart directional. Large signs such as: "course closed," "tee closed" etc.

3/16" Poly rope 1M & 2M ft. spools
Sand trap rakes, combines steel head & plastic teeth
Plastic chain & ground posts
Tee caddy, container for tees, matches, scorecards

Howard S. Crane, Inc., P.O. Box 88, Oneida, New York 13421

Quick Test Moisture Tester, instrument to test grain
Aqua Probe Sub Soil Moisture Meter, instrument to test soil

Creative Sales, Inc., 200 South Main St., Fremont, Nebraska 68025

Tree systems—medicaps, systemic tree trunk injection

Cresline Plastic Pipe Co., Inc., 955 Diamond Ave., Evansville, Ind. 47717

Cresline, PVC pipe and fittings
Cresline Polyethylene pipe and tubing
Cresline polybutylene pipe and tubing

Curtis Dyna Products Corporation, P.O. Box 297, Westfield, Indiana 46074

Dyna Fogger, thermal fogger
BP-145, backpack sprayer, duster

Cushman, OMC-Lincoln, 1401 Cushman Drive, Lincoln, Nebraska 68512

Cushman turf care system, 12 hp and 18 hp gasoline vehicles for turf care

Cyclone Seeder Co., Inc., Urbana, Ind. 46990

Seeders

D

Dadco, P.O. Box 2086, Fresno, Calif. 93719

Dadco, battery clamps, guaranteed never to corrode. Supplies more power from battery to cable. Easy installation or removal. Available pre-molded on 2 & 4 gauge cable to 72"

Ross Daniels, Inc., P.O. Box 430, 1720 Fuller Road, West Des Moines, Iowa 50265

Ross Root Feeder, to feed as you water to the roots of trees and shrubs

Davey Tree Expert Co., Kent, Ohio 44240

Tree nursery, 150 varieties of shade and ornamentals

Tree service, nationwide and Canadian representation

Davis Mfg., Div. J. I. Case Co., 1500 S. McLean Blvd., Wichita, Kansas 67213

Fleetline®, rubber tire trenchers, 7-65 hp
Task Force®, track mounted trenchers
Road Run'r®, trencher 57 hp with backhoe attachment
Boring and reaming attachments for trenchers. Also direct boring equipment
Mini-Sneaker®, 25 hp vibratory plow
Scatback™, 30 hp 4-wheel drive articulated loader

Deere and Co., John Deere Equipment, John Deere Administrative Center, John Deere Rd., Moline, Ill. 61265

JD 350B & JD 450C, crawler; 42 and 65 hp; loader bulldozer blades and log fork available
JD 760A & JD 860A, elevating scraper; 9.5 and 15 cu. yd.
JD 380 & JD 480B, forklifts; 4000-5000 lb. lift and 5000-6000 lb. lift

Mowers, rotary, flail; push, riding, self-propelled; side mounted cutter bar available

JD 24, JD 70 & JD 170, skid steer loader; 25 and 37 hp
JD 820, grounds maintenance tractor, 31 hp; belly mounted mower, cuts 6 ft. swath

Tools, 237 different tools for shop, work and home
Roto Tillers

Lawn Sweepers

Blades

Snow Throwers

Chain Saws

JD301A, tractor, utility, 43 hp, utility loader, 43 hp

JD 300B, loader, 43 hp, loader/backhoe, 43 hp

JD 302, tractor, 50 hp, utility loader, 50 hp

JD 302A, loader, 50 hp, loader/backhoe, 50 hp

JD 401 B, tractor, utility loader

JD 401 C, loader, loader/backhoe

Delavan Mfg. Co., 811—Fourth St., West Des Moines, Iowa 50265

Nozzles, all conceivable types, sizes and spray angles
Accessories, boom control valves, pressure relief valves, strainers, agitators and spray guns
Pumps, roller, turbine, piston

DESA Industries, Inc., 25000 S. Western Ave., Park Forest, Ill. 60466

Remington, gasoline chain saws, electric chain saws, pneumatic chain saws

Dico Co., Inc., P.O. Box 1344, Des Moines, Iowa 50305

Dico, Knuckle boom for sod loading & transporting

For wood, brush, trash

Log loaders. Trolley boom hoists

Traveling boom & cranes

Wheels and brakes

Digz-All Trencher Co., Div. Wing King Co., Merrill, Iowa 51038

Digz-All, trenchers

DriAll, Inc., P.O. Box 309, Attica, Ind. 47918

Air Curtain Destructor, pit incinerator for disposal of trees and wood products—air pollution approved

Scarifier Levler, leveling device with scarifying teeth for landscapers, sod growers

Yard Levler, leveling or grading drag

Dunlop Tire & Rubber Corp., Box 1109, Buffalo, N.Y. 14240
Dunlop tires, for cars and trucks, tractors and implements

E

ESB Brands, Inc., Willard, Exide, Box 6949, Cleveland, Ohio 44101

Willard and Exide batteries, 6-volt electric golf car and golf utility vehicle batteries. Lead acid storage batteries for lawn and garden tractors

ESB Battery Chargers

E-Z Go Car, Division of Textron, Inc., P.O. Box 388, Augusta, Ga. 30904

E-Z Go Golf Car, X-440 electric 3-wheel, GX-440 gas 3-wheel, X-444 electric 4-wheel, GX-444 gas 4-wheel
GT-7 gas turf vehicle

E-Z Rake, Inc., 1001 S. Ransdell Road, Lebanon, Indiana 46052

E-Z Rake, Spring Tine Thatchers and power rakes, lawn vacuums that attach to garden tractors and riding mowers

Eagle Mfg. Co., 24th & Charles St., Wellsburg, W. Va. 26070

Eagle manufactures a complete line of oilers, safety cans, oily waste cans, lab cans, oil and gasoline containers and safety storage cabinets

Echo Chain Saw Div., Kioritz Corp. of America, 350 Wainwright Ave., Northbrook, Ill. 60062

Echo Chain Saws, full range of chain saws from CS302, 30cc unit to CS100, 100cc unit

Echo Power Blowers, compact, lightweight knapsack type blower, 40 cc engine

Echo Duster/Mist Blower, compact, light weight knapsack type blower, 40cc engine

Echo Swing Scythe, lightweight, shoulder type, 20cc engine

Economy Tractor, 1005 Anoka Ave., Waukesha, Wisc. 53186

Mowers, rotary, tractors (13-20 hp)

Engineering Products Co., P.O. Box 284, Waukesha, Wis. 53186

Economy, man-size all-gear tractor, 14 hp

Mower, rotary, mounted under tractor, 60 inches

Edwards Manufacturing Company, P. O. Box 1275, Ponca City, Oklahoma 74601

Edwards Sprayers, power sprayers, 50, 100, 200, 300, 400, 500, 1,000 gallons; 3 to 50 hp engines

Rue R. Elston Co., Inc., 815 E. 79th St., Minneapolis, Minn.

Gopher Getter Jr., injection equipment

Energy Mfg. Co., Inc., 100 N. Main, Monticello, Iowa 52310

Hoists, pick-up

Hoists, truck

Hoists, bolster wagon

Hydraulic cylinders, valves, pumps, motors, reservoirs, gauges, couplers, filters, cylinder breathers

Erickson Corp., 211 St. Anthony Blvd., N.E., Minneapolis, Minn. 55418

Erickson, hydrostatic drive compact front end loaders

Erie Go Mfg. Inc., 1432 Tiffin Avenue, Sandusky, Ohio 44870

500 Ken Roll, ½ ton, hydrostatic, recoil start, manual steering

3000 Ken Turf Roll, 48" wide, hydraulic drive, manual start (electric start optional)

Eversman Mfg. Co., Curtis at Fifth St., Denver, Colo. 80204

Eversman, land leveler

Red Ewald, Inc., P.O. Box 1167, Karnes City, Texas 78118

50-gallon spray rig, the basic unit is 50-gallon fiberglass tank, skid, 5 hp engine, 6 roller pump, 25' hose and handgun, plumbing and regulator

Excel Industries, Inc., P.O. Box 385, Hesston, Kansas 67062

Hustler, mower, rotary Model 272, 18 hp, dual hydrostatic transmission, 72-inch cut, winter attachments available

Hillside Hustler, mower, rotary, 24 hp, dual hydrostatic, Model 360, self-leveling for maximum safety and performance on hillsides and level ground; 60-inch flail, too

F

FMC Corp., Agricultural Machinery Div., 5601 E. Highland,

Jonesboro Ar. 72401

Bean Sprayers, hydraulic, all-purpose, pull-type

Bean sprayers, hydraulic high pressure, mist blowers, skid mount, trailer mount, complete line of booms, accessories, components. Rotary and Flail tractor mounted mowers, tillers

Mistblowers, truck mounted, nozzle parts

FMC Corporation, Sweeper Division, 1201 E. Lexington St., Pomona, Calif. 91766

Wayne Stump cutter and Wayne Brush Chipper

FMC Corporation, Outdoor Power Equipment Div., 215 South Park Street, Port Washington, Wis. 53074

HT-20, tractor, garden, hydrostatic, twin cylinder, 19.5 hp 54-inch rotary mower, 48-inch two-stage snow thrower, 42" single stage snowthrower, 54" blade, 33" tiller expandable to cover wheel widths.

QT-16, tractor, garden, hydrostatic drive, twin cylinder 16 hp, 48-inch rotary mower, 42" single stage snowthrower, 54" blade, 33" tiller expandable to cover wheel widths.

QS-16, tractor, garden, hydrostatic drive, 48-inch rotary mower, 16 hp, 42" single stage snowthrower, 54" blade, 33" tiller expandable to cover wheel widths, 16 hp single cylinder engine

H-14, tractor, garden, hydrostatic drive, 14 hp 42-inch rotary mower, 38" single stage snowthrower, 42" blade, 33" tiller expandable to cover wheel widths

G-14, tractor, garden, 14 hp, 42-inch rotary mower, 38" single stage snowthrower, 42" blade, 33" tiller expandable to cover wheel widths

G-10, tractor, garden, 10 hp, 38-inch rotary mower, 38" single stage snowthrower, 42" blade, 33" or 22" tiller

G-8, tractor, lawn, 8 hp, 32-inch rotary mower, 32" single stage snowthrower, 42" blade 828, 829, mower, riding, 8 hp, electric and recoil start, 28-inch rotary

Mowers, mulching type, rotary, two 22-inch self-propelled, 22-inch and 18-inch, hand propelled, mulching type, rotary, 3 special application units, 22" push, 2 18" push

Mulcher Baggers, two models, 6 hp and 3.5 hp, both equipped with safety interlocks and leaf ramp option

Tillers, horizontal shaft, 5 hp; vertical shaft, 3.5 hp

Attachments to fit tractors

FMC Side-Winder, P.O. Box 818, Minden, Louisiana 71055

Side-winder rotary cutters, tractor drawn rotary cutters, lift and pull models, 4 ft. to 16 ft.

Side-winder flail mowers, tractor drawn flail mowers, 6 ft. and 7 ft. models

Fairmont Hydraulics, 332 S. Michigan (Suite 1818), Chicago, Ill. 60604

The Powerfuls, drills (hydraulic powered), pruners (hydraulic powered), saws (chain-hydraulic powered), saws (circular-hydraulic powered)

Fanno Saw Works, Box 628, Chico, Calif. 95926

Saws, pruning, manual

Fayette Division, Dayton-Walther Corporation, P.O. Box 8, Fayette, Ohio 43521

Halette by Fayette, trailers, utility and light to medium heavy industrial

Ferrari Tractor, 6104 Avenida Encinas, Carlsbad Ca. 92008

Ferrari 4WD Tractor, 30 & 45 hp 4WD mowing tractors Mascio Rototillers, Commercial 40", 50", 60" & 90" rototillers for all 3 point hitch, catagory I trailers

Ferrari Walkbehind rototillers, 7.5 hp & 14 hp diesel rototillers

Ferrari Lawn & Garden tractors and sprayers, 7.5 hp & 14 hp diesel power head tractors for mowing, snow blowing, "spraying", also has riding trailer

Ferrari Snow Plow, 7.5 hp & 14 hp diesel snow blower

Ferti-Feeder, 3973 Eastlay, Des Moines, Iowa 50306
Ferti-Feeder, tree deep root fertilizer injector

Fibre Glass Products, Box 147, Swannanoa, N. C. 28778
Tool boxes—pickup truck, Fibre Glass construction, paddle locks, built to accommodate B & G sprayer, fits all size trucks
Chemical tanks—pickup truck, 55, 110, 180 gallons, Fibre Glass construction, with agitator, drain, and hose connections

Fimco, Inc., 1st & Court Streets, Sioux City, Iowa 51101
Big Butch, pressure washer, electric, portable
Dobbins, sprayer, lawn and garden, gas, mechanical agitation; sprayer, orchard and golf course, gas, mechanical agitation

Finn Equipment Company, 2525 Duck Creek Rd., Cincinnati, Ohio 45227
Finn mulch spreader, straw spreader
Finn Hydroseeder, seed and fertilizer spreader
Finn Klodbuster, slope harrow

The Flintkote Co., Pipe Products Div., One Cascade Plaza, Suite 1402, Akron, Ohio 44308
Pipe, asbestos, cement
Pipe, PVC
Pipe, polyethylene

Flymo, P.O. Box 939, Elkhart, Ind. 46514
Flymo, air-cushion rotary mower

Foamspray Chemicals, Inc., 2623 Perth St., P.O. Box 20183, Dallas, Texas 75220
Foamspray® sprayer nozzles, aerial and ground boom, handgun, and orchard sprayer nozzles for Foamspray® drift reduction systems (five nozzle types cover air, ground, orchard and roadside)

Foley Mfg. Co., 3300 Fifth St. N.E., Minneapolis, Minn. 55418
Reel Grinder, sharpens, reel type, lawnmowers
Bed knife grinder, sharpener, reeltypes, lawn mower bed knives
Lapping machine, Back laps reel type lawnmowers
Chain saw grinder, sharpen saw chains

Ford Motor Co., Tractor & Implement Operations (N.A.), 2500 E. Maple, Troy, Mich. 48084
Ford LCG Tractors, 37 to 63 hp
Ford all-purpose tractors, 23 to 131 hp
Ford flail mowers, 62, 74 and 88-inch widths
Ford rotary cutters, 60, 72, 84 and 100-inch widths
Ford sickle barmowers, 5, 6 or 7 ft. widths

Fore-Par, Inc., 7150 Fenwick Lane, Suite 106, Westminster, Calif. 92683
Fore-Par, tee markers, practice green markers, direction and rules signs, flags, greens, personalized, flags, greens, regulation, tee monuments

Fox Valley Marking Systems, 31W300 West Bartlett Rd., Bartlett, Ill. 60103
Easy Marker, aerosol paint cane type object to aide in layouts for landscapers, contractors, etc.

Friend Mfg. Corp., 4441 Prospect St., Gasport, N.Y. 14067
Tractor (hp); mower (reel, sickle, rotary, flail); saw (gas, hydraulic, electric, chain, circular); sprayer (type of agitation); irrigation (type of head, etc.)
Friend Airmaster, air blast applicator
Friend Orchardkraft, alternators, power brushcutter
Friend Commander, chemical applicators, granular, chemical
Champion and Chapin, chemical applicators, dusters
Friend Orchardkraft, generators, hose, hydraulic and air-powered tools
Friend Parkkraft, litter bags

Willson, dust masks
Friend, mistblowers, nozzle parts
Uniroyal, protective clothing
Friend Orchardkraft, pruners
Friend, pumps
Hannay, reels, hose
Willson, respirators, safety equipment
New Draulics, saws, chain, hydraulic and pruners, hydraulic
Seymour Smith, saws, manual
Friend Orchardkraft, power saws, shears
Friend, spray booms, spray guns, spray nozzles, complete, disk whirls
Friend, spray pumps, sprayer, bifluid, boom
Friend Orchardkraft, sprayers, cart or wheelbarrow type, hand, knapsack
Friend, spray tanks, sprayers, hose end, complete power unit sprayers

Fruend Can Co., 143 W. 84th St., Chicago, Ill.
Gasoline cans to meet OSHA specifications

Fuerst Brothers, Inc., P.O. Box 271, Rhinebeck, New York 12572
Fuerst F-l-e-x-i-b-l-e tine harrows, turf maintenance equipment for seedbed preparations, scarifying, overseeding preparation, golf course construction, general turf area and bridle path maintenance

G

G. E. M. Products Inc., Box 845, Carol Stream, Ill. 60187
Snow Co "Power Kart", 3 wheel truck 8 hp
Snow Co "Farm Skat", all terrain vehicle 8 hp

G. & H. Products, Inc., St. Paris, Ohio 43072
Uni-Lift, motorized all-position stand for riding mowers, lifts up to 80 inches, 1,000 lb. loads, in less than 30 sec.

Game Time, Inc., The Toro Company, 903 Anderson Rd., Litchfield, Michigan 49252
Park and playground equipment, half-way houses for golf courses

Gandy Company, 528 Gandrud Road, Owatonna, Minnesota 55060
Gandy Turf Tender, for fertilizer, seed or granular chemical; 24 or 42-inch width
Gandy spreader 600 Series, for fertilizer, seed or granular chemical; 3, 4, or 5-foot width
Gandy Spreader 10A Series, for fertilizer, seed or granular Chemical, 6, 8, 10 or 11-foot width, pull-type and tractor mounted
Gandy Spreader 1020A, for fertilizer, seed or granular chemical; 20 foot; folding
Gandy disk mount, granular applicator; 3 to 20 foot, hydraulic or mechanical drive
Gandy Ro-Hi, high clearance granular applicator; 5 to 28-inch band
Gandy Line Tender, granular applicator; 1 to 21-inch band, handle control
Gandy Super/Junior, Granular applicator; 1 to 21-inch band, implement-mounted
Gandy Measuring Wheel, one-man land measuring in feet or meters

Garber Seeders, Inc., St. Paris, Ohio
Seeders, mounted and pull type

General Electric Co., Outdoor Power Equipment Operation, Corporations Park, Bldg. 702, Schnectady, N.Y. 12345
Tractors, electric/battery-powered, full line of attachments

General Scientific Equipment Co., Limekiln Pike & Williams Ave., Philadelphia, Pa. 19150
Aprons
Gloves

- First aid kits
Aerosol burn spray
- Giant-Vac Mfg., Inc., Machine Shop Road, South Windham, Conn. 06266
Giant-Vac, heavy-duty commercial vacuums
Giant-Blo, heavy-duty commercial blowers
Giant-Truck Loader, heavy-duty truck loaders, front or trailer mount from 12 through 68 horsepower
Giant-Thatcher, 5 and 7 hp—thatching machines
- Ginther Equipment Corp., P.O. Box 311, Arcadia, Ca. 91006
Du-wiper, dew remover for greens
Clipping spreader, patented spreader-recycles grass clippings from green or tees
Turf drag, steel drag, breaks up grass or dirt lumps on fairways
Control stakes, steel stakes, types T & CP, with our golf course guide rope, controls flow of traffic
OB stakes, steel out of bounds stakes for controlling traffic
Golf course guide rope, plastics rope, 1/4" hollow graided for use with our stakes in controlling traffic
Bag supports, for supporting golfers bags & clubs at driving ranges on earth or asphalt.
Custom signs, signs, steel, with customized messages.
Mity hyd. dump trucks and trailers, utility and personnel trucks, 5000 lbs. capacity with low ground pressure
- Glendale Optical Co., Inc., 130 Crossways Park Dr., Woodbury, L. I., N.Y. 11797
Glengard head protection, 9500 series safety hat.
- Goodall Div., 1405 Bunton Rd., Louisville, Ky. 40213
Goodall, mower, rotary
Goodall lawn-turf equipment
- Gotham Chicago Corp., 2660 N. Clybourn, Chicago, Ill. 60614
Rose cones, winter protection for roses (foam plastic)
- Granberg Industries, Inc.**, 200 So. Garrard, Richmond, California 94804
Clip-N-Trim, chainsaw pruning and hedge clipping attachment
Grind-R-Guide, electric grinder for saw chains
Break-N-Mend, hand-tool for repairing saw chain
Alaskan Mill, lumber making chain saw attachment
Mini-Mill, lumber making chain saw attachment
File-N-Guide, chain sharpening device
File-N-Joint, chain sharpening device
- Grass Growers, Inc.**, P.O. Box 584, Plainfield, New Jersey 07061
Terra Tack, for erosion control, straw / hay tack and mulch binder
- Gravely, Division Clarke-Gravely Corp., One Gravely Lane, Clemmons, N.C. 27012
816 4-wheel tractor, 8-spd. trans., 16 hp, Onan 2-cylinder engine (rear mounted)
812 4-wheel tractor, 8-spd. trans., 12 hp Kohler single cylinder engine (rear mounted)
810 4-wheel tractor, 8-spd. trans., 10 hp Kohler single cylinder engine (rear mounted)
408 lawn tractor, 34-inch rotary mower—8 hp Kohler engine
7.6 hp custom 2-wheel tractor, 30" rotary mower, 40" rotary mower, 50" rotary mower
7.6 hp 2-wheel tractor, rotary tiller, rotary plow, rotary cultivator
C-10 hp commercial 2-wheel tractor, 44", 38", 36" snowblowers, front mount 48" scraper
C-12 hp commercial 2-wheel tractor, blade, center-mount scraper blader, riding sulky for 2-wheel tractors
- Greenlawn Sprinkler Co., 2200 South Lipan, Denver, Colorado 80223
Greenlawn, adjustable riser sprinkler heads, automatic and manual sprinkler valves, adjustable risers, greenhouse bench nozzles
- Griswold Controls, 124 E. Dyer Road, Santa Ana, Calif. 92707
System control module, irrigation controller
Station control module, irrigation controller
Programmer, irrigation controller, check valve, flow control valve, solenoid control valve, pressure regulating valve, combination pressure regulating and solenoid control valve
- Ground Hog, Inc., 25010 E. 5th St., San Bernardino, Calif. 92410
Ground Hog earth drills, 3 models (portable—gas powered)
Ground Hog trencher, Model T-3M (for sprinkler systems)
- Grumman Aircraft Corp., S. Oyster Bay Rd., Bethpage, L.I., N.Y.
Aircraft, fixed wing
- H**
- HMC, 22131 S. Vermont, Torrance, Calif. 90502
Jobber, utility vehicle—3-wheel
Jobmaster, utility vehicle—3-wheel
Diahatsu, utility vehicle—4-wheel
The Green Machine, weed & brush cutter, nylon blades
- Hadfield Sod Roller Co., 6443 Sherwood, Oxford, Mich. 48051
Sod roller
- Hahn, Inc.**, 1625 N. Garvin St., Evansville, Indiana 47717
Flex-A-Matic 140, five-gang reel mower
TT-1200 & TT-1201, greens management system, greens mowers, verti-cuts, spikers & tee mowers
Hyd. 5/7, 7 gang reel mower
Gang mowers, reel type, 3, 5, 7, & 9 gang mowers
Aerifiers, pull behind type
- W. L. Hamilton Co., Lenter St., Bangor, Mich.
Spray guns
Pressure relief valves
Spray nozzles
- Hancor, Inc.**, P.O. Box 1047, Finlay, Ohio 45840
Turf-Flow, drainage tubing, two-inch
Agri-Flow, drainage tubing, 4-inch, 6-inch, 8-inch, 10-inch, 12-inch
- Clifford B. Hannay & Son, Inc.**, 422 Maple St., Westerlo, N.Y. 12193
Hannay Reels, reels to handle all kinds of hose and electric cable
- Harbor Industries, Inc., P.O. Box 751, Beaver Falls, Pa. 15010
Harbor, soil moisture indicator
- Harley-Davidson Motor Co., Inc., 3700 W. Juneau Ave., Milwaukee, Wisc. 53208
Golf cars and turf vehicles
- Harvestall Industries, Inc., 3 North Walnut Ave., New Hampton, Iowa 50659
Truckler, combination forklift trailer
- Hays Mfg. Div., Zurn Industries, Inc., 12th & Plum Sts., Erie, Pennsylvania 16501
Marfaid, automatic solonoid valves
Select-O-Rain, industrial controller
Safe-T-Rain, impact and pop-up sprinklers
- Hemco Corporation, P.O. Box 210/111 N. Powell Rd., Independence, Missouri 64051

Tanks, fiberglass tanks for spraying or storage, 60 to 500 gallons

Travelite tool box, fits all wide bed pick-up trucks

Herd Seeder Company, Inc., P.O. Box 448, Logansport, Indiana 46947

Herd Sure-Feed, broadcast seeders (or broadcasters) for spreading seeds, fertilizer and granular chemicals, as herbicides and insecticides)

Hesston Corp., Lawn Equipment Division, 8640 Brookville Rd., Indianapolis, Ind. 46239

Hesston Front-Runner—grounds maintenance tractors, Model 200, 19.8 hp—Model 180, 18 hp—Model 160, 16 hp; 48", 60" mowers and 80" batwing mower head, self-contained vacuum pick-up (fits 48" & 60" mower heads only). Other attachments: rotary broom, dozer, snow thrower and tillage equipment; features hydrostatic drive, articulated steering, "up-front", roomy operator cockpit

Hesston stump cutter, 8 hp Briggs & Stratton engine, portable, replaceable

Hesston tractor, 16 hp, 18 hp, 19.8 hp; mower—rotary 48", 60", 80"; vacuum collector, snow-plow dozer blades, rotary broom, cultivators, 42" wide—disc harrow—29"-39" cutting width, aerator, 36" wide, stump cutter, stump removal to 8" below ground level

Litter Vacuum

V-Plow

Two-stage snow thrower

Highway Equipment Company, 616 D Ave. N.W., Cedar Rapids, Iowa 52405

Hi-Way Model P, utility, hopper-type spreader body that is simply set into a truck body to convert pickup, flatbed or dump body into spreader unit; spreads sand salt or cinders up to 40 ft; used too, to spread fertilizer and lime in landscape work

Hoffco, Inc., 25 Washington Ave., Richmond, Ind. 47374

Hoffco, P8—power Scythe, MP—brush cutter, 973—one-man post hole drill, 1000—2-man (2 cycle) post hole drill, 1100—2-man (4 cycle) post hole drill
Comet Jac-Lift, 2000 lb. winch hoist

Holsclaw Bros., Inc., 1325 E. Virginia St., Evansville, Indiana 47711

Holsclaw flat bed trailers, flat bed trailer suitable for carrying golf carts, mowers and many other items

Homelite, 70 Riverdale Ave., Port Chester, N.Y. 10573

Saws, chain, 18 models; 8 3/4-26 lbs. weight; 12-60 inch bar length; manual, automatic and dual system chain oiler

Hortiscape, Inc., 7866 Second St., Dexter, Michigan

Hortiscape Landscape Border Edging

Hortiscape Tree Guying units

Howard Rotavator Co., Inc., 343 S. Division, Box 100 Harvard, Ill. 60033

Howard Turf Quakers, turf aerification machines

Howard Rotavators, rotary tillage equipment

Howard Power Arms, 3-pt. linkage backhoes

Electrical generators

Howard Magnates

Hub States Corporation, 2000 North Illinois Street, Indianapolis, Ind. 46202

520 sprayer, gas powered, high pressure

702 sprayer, electric powered, volume

730 sprayer, electric powered, high pressure

970 sprayer, gas powered, volume

810 sprayer, gas or electric, portable

H. D. Hudson Manufacturing Company, 154 E. Erie St., Chicago, Illinois 60611

Hudson manually-operated sprayers, compressed air, 1-1/3 to 4 gallons, steel and polyethylene tank; knapsack, 4 1/2 to 5 gallons; slide-pump; wheelbarrow, 17 1/2 gallons;

barrel and bucket spray-pumps; intermittent and continuous plunger-operated, 5 oz. to 2-2/3 qts.

Hudson manually-operated dusters, plunger, 1-lb. capacity; crank-operated, 14-lb. capacity; knapsack, 17-lb. capacity

Hudson power sprayers, 12 1/2, 15, 30, 50, 100, 150, 200 and 300 gallons, 3, 5 and 10 GPM output, 100 to 300 lbs. pressure; on wheels and skids, PTO and self-powered, jet and mechanical agitation

Hudson power dusters, PTO and engine powered, 6, 4, 2 and 1 outlet; litter-types

Hudson power spray-pumps, 3, 5 and 10 GPM, piston pumps, 250 and 400 lbs. pressure

Hudson PTO pump kits, positive piston, roller

Hudson spray booms, 4, 20 and 30 feet long, for PTO and engine powered sprayers, fixed and adjustable nozzle, single nozzle broad-spray

Hudson spray guns, single, double, triple nozzle; adjustable

Hudson power sprayer accessories, guns, booms, trailers (fixed and adjustable tread), tanks, tractor barrel mounts, wheels, cab top, elevated operator platform, telescopic gun mast, nozzles, boom drops, boom control valves, hose, hose clamps, hose fittings, tank refiller, pressure gauges, hose reels, pressure regulators, root feeder, flower gun, 3-nozzle gun, lawn booms

Hudson flame sprayers, 1 1/2 pints, 1 1/2 to 4 gallons

Husqvarna, Inc., 151 New World Way, South Plainfield, New Jersey 07080

Chain saw, gasoline engine powered

Hydraulic Products Co., Inc., 501 East 42nd, Lubbock, Texas 79404

HPC submersible, vertical turbine and vertical can pumps for irrigation, homes, cities and industries

Hydroponic Chemical Co., Inc., Box 4300, Copley, Ohio 44321

Root feeding rods, sod testers

Hydro-Turf, P.O. Box 3, Elk Grove, Ill. 60007

Hydro Turf, spraying equipment, sprinkler systems—above ground, seeders, portable pumps, portable generators, flexible hose and pipe, Hydro seeders and mulchers

Hypro Division, Lear Siegler, Inc., 375 Fifth Ave. N.W., New Brighton, Minn. 55112

Hypro, sprayer pumps, sprayer pump accessories, transfer pumps

ITT Marlow, P.O. Box 200, Midland Park, N.J. 07432

Pumps, irrigation, portable, submersible

Ideal Crane Div., Bert Parkhurst, 15051 E. Admiral Pl., Tulsa, Okla. 74116

Ideal Crane, hydraulic truck crane (can be operated both electrically and by hand) very rugged; 3000 lb. capacity electrically-operated crane is \$513.00; 2500 lb. capacity hand-operated crane is \$215.00; barrel chain and nursery sling available

Imperial Underground Sprinkler, 705 E. 31st St., Kansas City, Mo. 64109

Irrigation, spray heads and controllers

Inject-O-Meter Mfg. Co., Inc., 820 Thornton, Clovis, New Mexico 88101

Fertilizer Injectors, for injection of fertilizer, herbicide or insecticide in irrigation stream (available with tanks)

International Harvester Co., 401 N. Michigan Ave., Chicago, Ill. 60611

International, tractors to 101 hp, crawlers 42 to 69 hp, mowers, rotary cutters; flail type; side mounted sickle;

backhoes and loaders, all sizes 3-point hitch backhoe
International 3200, compact loader, 30 hp

International Harvester (Consumer Products) 401 N. Michigan Ave., Chicago, Ill. 60611

International, lawn and garden tractors, 8, 10 & 12 hp gear drive; 10, 12 & 14 hp hydrostatic drive
Cub Cadet, Cadet 55 and 75, riding mower
Cadet 76, lawn and garden tractor
International 526, rotary tiller
International 95, electric riding mower plus 95 Cadet electric
International 265 & 268, snowblower
International, rotary mowers 19 & 21-inch cuts

Irrigation Supply Co., 924 Baxter Avenue, Louisville, Kentucky 40204

Preassembled pumping stations for irrigation systems
Buckner sprinklers
J-M pipe; ametek valve boxes; dresser gate valves; and complete stock of irrigation and utility fittings and supplies

Irrrometer Company, Inc., P.O. Box 2424, Riverside Calif. 92506

Irrrometer moisture measurement equipment, hermetically sealed pressure gauges for pumps & irrigation systems, automatic moisture sensing devices

J

JLM Products & Design, 6805 Boysenberry Way, Colorado Springs, Colo. 80907

Soil moisture meter, tested to 12-inch depth, deeper depth units available

Jacobsen Manufacturing Co., 1721 Packard Ave., Racine, Wisconsin 53403

Mower, rotary, push, 20-inch; self-propelled, 21-inch; riding, 60-inch
Mower, reel, self-propelled, riding, tractor, 30-inch to 25 ft., mounted and pull behind gang
Mowing tractors, reel, 76-inch to 19 ft.
Mower, greens; 22-inch self-propelled, triplex riding, 62 inches
Aerators, self-propelled and tractor mounted, 18-inch to 7 ft.
Turf Sweeper, self-propelled and pull behind 48 inches and 60 inches
Seeders, self-propelled and tractor mounted, 21-inch and 48-inch
Top Dresser, self-propelled and truck mounted, 36-inch spreading width
Sod Cutter, 12-18 inch cutting width
Edgers
Utility truck, 12 and 14 hp
Trailer, 6 ft. wide and 10 ft. long, tilt bed, single axle
Pipe Piper, 10, 14, 18 hp irrigation pipe pullers; bury the pipe without removing the earth, no trenching

Jameson Corporation, P.O. Box 15277, Charlotte, N.C. 28210

Fiberglass "Safe Stick", fiberglass pruner poles—single sections up to 12 ft. long; fiberglass pruner poles—sectional sections up to 12 ft. long which can be locked together for any desired combination of lengths. Poles will accommodate all pruner heads; "safety yellow"—color

Jeep Corporation, 14250 Plymouth Road, Detroit, Michigan 48232

Jeep 4-wheel drive vehicles, Jeep CJ-5/CJ-6 and Jeep Cherokee 4-wheel drive sport/utility vehicles, Jeep Wagoneer 4-wheel drive station wagons and Jeep 4-wheel drive pick-up trucks (light/medium duty)

Jobu Chain Saws, P.O. Box 6023, Texarkana, Texas 75501
Chain saws

Johnson Hydraulic Equipment Co., Div. Arps Corp., 1711 Wisconsin Ave., New Holstein, Wisc. 53061

Work Horse Loader, for compact tractors and front-end loader
Work Horse Terra-blade, for compact tractors belly-mount blade
Work Horse Terra-comb, for compact tractors, combination thatcher and power rake

Johnson's Industrial Supply Co. (Jisco) 1941 Karlin Dr., St. Louis, Mo. 63131

Jisco earth augers, the quick easy professional way for home owners to deep root feed their trees, bushes and shrubs

Jomac Products, Inc., 863 Easton Road, Warrington, Pa. 18976

Protective clothing, partial or complete protection
Gloves, chemical and waterproof gloves for handling chemicals

K

K-D Manufacturing Company, P.O. Box 4547, Waco, Texas 76705

K-D Kurb Dresser, edges streets, curbs and walks; mounts on tractor equipped with category 1, 3-point hitch; can be used to edge along concrete or asphalt
K-D Rough Terrain Lift Trucks, lift capacities, 5,000 to 8,000 lbs., lift heights to 30 feet, large flotation tires for soft ground and rough terrain, gas or diesel engines, manual or power reversing transmissions

F. D. Kees Mfg. Co., 700 Park Avenue, Beatrice, Nebraska 68310

Powerake®, thatcher, lawn
Powerslice®, aerator, lawn
Kom-pak, shredder
Kaster, spreader, broadcast, fertilizer, seed, lawn
Krawler, sprinkler, traveling, lawn

Kemp Shredder Co., 1027 E. 26th St., Erie, Pa. 16505
Shredders

Kinco Mfg., 2368 Territorial Road, St. Paul, Minnesota 55114
Kinco KMG 38, sickle bar mower
Henderson GPM, verti-cut and flail-type mower

King Bros. Industries, 251 Powell Rd., Fillmore, Calif. 93015
Flex-Riser®, flexible riser for sprinkler systems
Sta-Stake®, sprinkler riser support

Knaack Manufacturing Co., 420 East Terra Cotta Ave., Crystal Lake, Ill. 60014

WeatherGuard, storage chests and ladder racks for pick-up trucks (for equipment and tools).
Knaack, storage chests, work benches, and tool boxes

Kohler Co., High Street, Kohler, Wis. 53044

Kohler, 4-cycle, air-cooled engines, 4 hp to 24 hp

Kubota Tractors, Inc., 6245 Grand Ave., Los Angeles, Calif. 90014

Tractors, up to 40 hp

Karl Kuemmerling, Inc., 4536 Lincoln Way, E., Massillon, Ohio 44646

Willson, safety hats
Mitts & Merrill, brush chipper (territory Ohio, Ky., Western Pa., Western N.Y., W. Va., Md. from Hagerstown west)
Solo, sprayers
Hodges, stump router (territory E. of Mississippi)
Seymour Smith, pruners
Fanno, saws
Greenlee, tools
Carhartt, uniforms

Nortec, log splitter
Little Wonder, pruners
Champion, pruners
Skod, saws and pruners
B.V.D., saws and pruners
Standard, brooms
Wall Rope Co., rope
Klein, tools
Whitlock—Plymouth, rope

L

Lakes Supply Co., Inc., P.O. Box 101 Dundee, Ill. 60118

Toro, landscape seeders and rollers
Lakes Supply Co., Inc. drip weed roller applicator
Western, snow plows
Toro, lawn mowers
Huffy, lawn mowers and riders
Hahn Eclipse, lawn mowers and riders
Jacobsen, lawn mowers and riders
Ariens, lawn mowers and riders
WD-40, lubs.
Hoists for pickup trucks & larger

Lakeshore Equipment & Supply Co., 10237 Berea Rd.,
Cleveland, Ohio 44102

Replacement parts, mowers
Golf accessories, flags, cups, etc.
Lesco sprayers
Lesco karts

Lakeside Mfg. Company, Inc., 39 E. Main St., Honeoye, N.Y.
14471

Trailers, industrial, 6 to 15-ton rated capacity

Lancaster Pump & Mfg. Co., Inc., 1340 Manheim Pike, Lan-
caster, Pa. 17604

Saws, chain, five models, 8 1/2-15 lbs. weight, 12-24-inch
bar lengths, manual and dual system chain oiler

L. L. Larson Machine, Inc., 1017 N. Santa Fe, P.O. Box 308,
Princeville, Illinois 61559

Sprayer pump, piston, roller & centrifugal
Portable water pumps, centrifugal, roller & piston
Sprayer nozzles, broadcast & hi pressure
Sprayers for ground coverage, broadcast & spot applica-
tion
Sprayers for trees, 20 ft. x 50 ft. application
Sprayers for turfs, broadcast & spot application
Sprayers, fertilizer-mounted, broadcast & spot applica-
tion
Spreaders, fertilizer, pull-type, broadcast 40 ft. pattern

Laval Separator Corp., 1899 N. Helm, Fresno, California
93727

Laval Separator, hydro-cyclone de-sanding device that
eliminates 98% of +200 mesh sand and grit. Can be in-
stalled on pump discharge or suction. Available in flow
rates from 3-4100 gpm. Has a low pressure loss; often
used in place of filters or screens

Lawn-Boy, OMC-Lincoln, P.O. Box 82409, Lincoln,
Nebraska 68501

Lawn-Boy, solid state ignition rotary mowers, deluxe
model rotary mowers

Lawn Medic, Inc., Manufacturing & Research, 10 Gates
Street, Bergen, New York 14416

Porto-Mixer, hand-operated small 1 c.y. portable tumbler

Lehara Equipment Co., Inc., Edgeboro Rd., East Brunswick
N.J. 08816

Lehara Hy-Dro Flail, hydraulic extension mower—for
mowing behind guard rails, up and down banks

Leigh Products, Inc., Coopersville, Michigan 49404

Universal-Spray Doc, sprayer—tank; sprayers—open top
tank

Universal, slide sprayer; flame sprayers; hose-end
sprayers; power sprayers; continuous and intermittent
hand sprayers; hand dusters; fogger—mineral base

The Lely Corporation, P.O. Box 1060, Route 301, Wilson,
N.C. 27893

Lely Broadcaster/Seeder, P.T.O. driven, lift and pull-type
spreads fertilizer, seed, sand or chemicals

Lely Roterra, P.T.O. driven power harrow, horizontally
contro-rotating tines, prepares seedbed, incorporates
chemicals, levels and firms land

Levco Manufacturers, Inc., P.O. Box 72, Wynne, Arkansas
72396

Model HD50 Stump Grinder, a one-man stump removal
system offering unequalled maneuverability and speed;
operates behind a standard pickup truck (1/2-ton) or small
tractor; features include industrial, water-cooled power
unit and self-contained hydraulic system

Fred A. Lewis Company, 40 Belknap Rd., Medford, Oregon
97501

Lewis "Mole", post hole digger powered by your chain
saw

Lewis "Donkey" Winch, winch powered by your chain
saw

Lewis Tractor "Mole", post hole digger attachment to
small tractors (front end attachment)

Lifetime Career Schools, 2251 Barry Ave., Los Angeles, Calif.
90064

Landscape training. Complete home study training in
landscaping and ground care; free booklet describes train-
ing in detail

Lift-Quik Mfg. Co., South Min St., Evans Mills, N. Y. 13637

Lift-Quik, garden, golf cart, lift

Limb-Lopper Co., Inc., Div. of Robinson Ind., 11845 Burke,
Santa Fe Springs, Calif. 90670

Limb-lopper: hydraulic & air: pruners, saw. Hydraulic:
pruner, chains saw, circular saw, impact wrench, drill,
tamper. Electric: circular saw

Lindig Manufacturing Corporation, 1875 West County Rd. C,
St. Paul, Minnesota 55113

Lindig, shredders (soil and compost)—manual and trac-
tor fed, capacity up to 200 yards/hour; screeners
(powered) for soil and sand; brush chippers, 7 to 160 hp,
compact and full size for branches up to 8" in diameter,
also PTO drive; soil treating (sterilization) systems; leaf
shredders and compost pulverizer/mixers
Lindig Kajon, compact brush chippers 7 to 10 hp
Lindig Concho, compost shredder/grinder

Locke Mfg. Div. Stellar Lawn Care, 1085 Connecticut Ave.,
Bridgeport, Conn. 06607

Mowers, reel, self-propelled and riding, 30 inches to 87
inches; rotary

Lockwood Corporation, Box 160, Gering, Nebr. 69341

Lockwood Hardie Sprayers, airblast sprayer, 300 or 500
gallon stainless steel tank, trailer mount; utility (general
purpose) 100 to 500 gallon stainless steel tanks. Truck
trailer or skid mounted; shade tree—600 gallon stainless
steel tank, truck mounted

Lombard Power Equipment, Sales Ave., Harrison, Ohio 45030

1500 electric, saw, chain, 12-inch bar; 12 amps

Pony, saw, chain, gasoline, 12-inch bar, 6 1/2 lbs.

Comango, saw, chain, gasoline, 16-inch bar

Super comango, saw, chain, gasoline, 1/2 "anti-vibe,"
automatic oiler

Super Lightning, saw, chain, gasoline, 1/2 "anti-vibe,"
automatic oiler, 20-inch bar; saw, chain, gasoline, full
"anti-vibe," automatic oiler

London Fog Company, Crystal Bay, Minnesota 55323

London Foggers, thermal foggers from 3 hp hand portable through 16 hp heavy-duty
London Aire, ULV insecticide dispersal equipment from 5 hp dolly mounted type through 9 hp extra heavy-duty for large area mosquito control

Lumenite Electric Co., 2331 N. 17th Ave., Franklin Park, Ill. 60131

Lumenite, lawn irrigation control and equipment
ELS-5 and 11; 5 station and 11 station economical lawn irrigation controls
LAS-6PC to 40PC; 6 station to 40 station deluxe lawn irrigation controls
RDC-1000 rain detector control with variable sensitivity
RDP-1000 rain detector probe assembly

Lupton Enterprises, 32 Martha St., Tiffin, Ohio 44883
Log splitter, attachment to backhoe, replaces bucket in minutes

M

M-B Company, 1615 Wisconsin Ave., New Holstein, Wis. 53061

Brush Chippers, trailer mounted—12" and 15" sizes 120-158 hp gasoline engines
Orchard Chipper, tractor 3-point hitch attached PTO driven (540 RPM), 12" wide chipper with feed apron and 180° discharge chute
1-10, 3-10, 5-10, line marker, hand operated
Fitchburg chipper, brush chipper 12 in. and 15 in.
Tractor Brooms, sweepers

Maasdam Pow'r Pull, Inc., P.O. Box 6130, Burbank, Calif. 91510

Maasdam Pow'r Pull, winch-puller

Magline, Inc., 503 S. Mercer, Pinconning, Mich. 48650
Trailevator®, trailer, hydraulic elevating

Mars Industries, Inc., 5209 West Broadway, Minneapolis, Minn. 55429

Suburban Pick-up sweepers, tow-type for turf and hard surface sweeping

Martindale Electric Co., 1375 Hird Ave., Cleveland, Ohio 44107

Martindale Protective Mask, respiratory protection against non-toxic dusts
Martindale Protective Eyeshield, one-piece eyeshield

Massey-Ferguson, Inc., (Industrial Products) 1901 Bell Ave., Des Moines, Iowa 50315

MF 20, industrial tractor, 38 hp
MF 30, Industrial tractor, 52 hp
MF 31, industrial tractor, 70 hp
MF 40, industrial tractor, 38 hp
MF 20 Turf, industrial tractor, 38 hp
MF 30 Turf, industrial tractor, 52 hp
MF 20, 30, 40, 50A, 70, backhoe-loader; $\frac{5}{8}$ cu. yd., $\frac{3}{4}$ cu. yd., $\frac{5}{8}$ cu. yd., 1 cu. yd. respectively; up to 16 ft. digging reach; all but MF 70 available separately
MF 711, skid steer loader
MF 40, forklift
MF 2500, forklift
Box scraper, landscape

Massey-Ferguson, Inc., (farm equipment), 1901 Bell Ave., Des Moines, Iowa 50315

MF 135, tractor, 38 hp (PTO)
MF 165, tractor, 50 hp (PTO)
MF 175, tractor, 63 hp (PTO)
MF 180, tractor, 63 hp (PTO)
MF 1080, tractor, 80 hp (PTO)
MF 1105, tractor, 100 hp (PTO)
MF 1135, tractor, 120 hp (PTO)
MF 1155, tractor, 140 hp (PTO)

MF 1500, tractor, 150 hp (drawbar)
MF 1800, tractor, 180 hp (drawbar)

Massey-Ferguson, Inc., (consumer products), 1901 Bell Ave., Des Moines, Iowa 50315

MF 14, garden tractor, 14 hp
MF 126, garden tractor, 12 hp
MF 10, garden tractor, 10 hp
MF 310, self-propelled rotary mower, 3.5 hp
MF 210, push rotary mower, 3.5 hp
MF 58, 68, 61, 71, rotary cutters, cutting widths up to six feet

Mathews Company, P.O. Box 70, Crystal Lake, Ill. 60014
Lawn Genie, flail mower-sweeper-mulcher, 3 ft. and 6 ft. models

Maxe Manufacturing Co., Inc., P.O. Box 2001, Ft. Collins, Colo. 80521

Trailers, equipment trailers—medium duty
Truck Bodies, customized truck beds
Snow grooming, ski area and snowmobile trail grooming and snow moving equipment

McCabe-Powers Body Co., 8900 N. Frost, St. Louis, Mo. 63115

Buckets, aerial towers

McCulloch Corp., 6101 W. Century Blvd., Los Angeles, Calif. 90045

Chain saws, (15 models)
Hedge trimmer
Portable earth drill
Portable electric generators, 1500, 2000 and 3000 watt
Brush cutter

McDonough Power Equipment, Inc., McDonough, Georgia 30253

Mower, rotary, push-type and riding; reel, self-propelled

Melnor, Industries, Turf Div., 1 Carol Place, Moonachie, New Jersey 07074

Shrub nozzle adapters
Stationary spray heads
Pop-up spray heads
Rotary spray heads
Pulsating spray heads
Solenoid valves
Time controls
Quick coupler valves
Pipe and fittings
Underground irrigation systems, stationary & pop-up

Melroe Division, Gwinner, North Dakota 58040

Bobcat, front-end skid steer loader

Metro-chiper, Vestor Div., Morbark Ind., Winn, Mich. 48996
Chippers, for large tree chipping

Miller Tilt top Trailer, Inc., 450 S. & 2 St., Milwaukee, Wis. 53214

Tilt Top®, machinery hauling trailer, changes quickly from between the wheel to over the wheel trailer
Ramp Champ®, over-the-wheel platform trailer; both trailers available with new gooseneck hitches

Mid-State Metal Casters & Mfg. Co., 2689 So. 10th St., Fresno, Cal. 93725

Sweep, vacuum; yard
Blower, leaf blower (wind-row)

Mine Safety Appliances

Masks, dust, gas
Protective clothing
Safety belts and equipment
Respirators

Mitts & Merrill, Inc., 109 McCoskry St., Saginaw, Michigan 48601

Chipper, brush, staggered knife pattern, swing away folding feed chute, positive safety lock pin

Mobile Aerial Towers, Inc., 2314 Bowser Avenue, Fort Wayne, Indiana 46803

Hi-Ranger, personnel platforms

Moody Sprinkler Co., Inc., 3020 Pullman St., Costa Mesa, Calif. 92627

Rainmaster, automatic valves, electric and hydraulic; automatic controllers, electric and hydraulic; sprinklers—pop-up and stationary heads

Morbark Industries, Inc., P.O. Box 1000, Winn, Michigan 48896

Morbark Total Chiparvester's, portable disc type chipper reduces whole trees, limbs in tact to dimensional wood chips. Two models. One unit will reduce 21" diameter material, the other 18" diameter material in less than one minute.

Mott Corporation, 500 Shawmut Ave., LaGrange, Illinois 60525

Industrial, commercial, institutional grade flair type safety mowers, styles are walk behind or ride behind; tractor mounted & powered front, mid or rear; tractor drawn self powered used singly or in gangs; and side mounted (tractor) hydra-dynamically driven

MTD Products, Inc., 5389 W. 130 St., Cleveland, Ohio 44111
Rotary Vacuum Shredder Bagger, 5 hp, 3 stage cutting action blade

Mud Cat, Div. of National Car Rental, 5501 Green Valley Dr., Minneapolis, Minn. 55431
Weed harvester, aquatic

The F. E. Myers & Bro. Co., 400 Orange Street, Ashland, Ohio 44805

Turf Line, TL 10 E2 10 GPM-500 PSI 200 gallon — paddle agitator; TL 10 E2S 10 GPM-500 PSI 200 gallon—skid model; TL 35 E5 35 GPM-800 PSI 500 gallon—engine—rotary agitator; TL 29 100 GPM-29" fan—150 gallon—engine—mist sprayer

N

National Hydro-Ax, Inc., Box 568, Owatonna, Minnesota 55060

Model 500 hydro-ax brush cutter, 117 h.p., 4 wheel drive, articulate steering, front axle oscillation, 8 foot wide rotary cutter

Hydro-Ax's unique dual hydrostatic system insures full cutter power while maintaining maximum tractive effort . . . even during inching.

National Mower Co., 700 Raymond, St. Paul, Minn. 55114
National, 84" National Triplex Reel, 10 hp riding Reel;

68" National Triplex Reel, 10 hp riding reel; 68" National Triplex Reel, 8 hp; 30" National Triplex Reel, 8 hp riding reel

L. R. Nelson Corporation, 7719 N. Pioneer Lane, Peoria, Illinois 61614

Rain Train, traveling sprinklers

Silver Rain, pop-up sprinklers, landscape and turf irrigation equipment

Nunes Manufacturing, 2006 Loquat Avenue, Patterson, California 95363

Nunes Sod Harvester, complete mechanical sod harvester; mounted on Ford Model 4110 tractor; front cutoff and cutter assembly; will eliminate sod cutter labor; available in styles to: fold, slab, roll, sod.

Nunes Vacuum Sweeper, turf sweeper designed for sod growers; available with PTO drive or motor driven

O

Oberdorfer Foundries, Inc., Agri. Pump Div., Thompson Rd., Syracuse, N.Y. 13201

Pumps, bronze and aluminum, rotary gear, rubber impeller, rubber cotlar, centrifugal, helical rotor

Olathe Mfg., Inc., 2nd and Mullberry, Paola, Kansas 66071

Olathe Model 800 Quiet Chipper, brush, limb and lumber chipper with new patent pending noise control features
Model 8 Stump Cutter, portable stump remover, 8 hp
Model 12 Chipper, 3-pt. hitch PTO powered brush chipper

Model 172 and 330 pers, trailer mounted engine powered brush chippers

Model 400 hydraulic power unit, 8 hp portable hydraulic power unit

Omark Industries, Inc., Oregon Saw Chain Division, 9701 S. E. McLoughlin Blvd., Portland, Oregon 97222

Oregon Saw Chain, saw chain and accessory items

Oregon Power Mate and Super-tronic saw bars

Oregon Power Mate, rim and drum sprockets

Onan Division of Onan Corp., 1400 73 rd Ave. N.E., Minneapolis, Minn. 55432

Engines, 12-25 hp

Generators, electric portable-15KW

Battery chargers

Otis Elevator Company—Special Vehicle Division, P.O. Box 8600, Stockton, Calif. 95208

Otis Golf Car, electric, 4-wheel, 36 volt

Otis Turf-Awl, gasoline, 3 and 4-wheel, 18 hp

Otis Materials Handling, Div. Otis Elevator Co., 8000 Baker, Cleveland, Ohio

Forklifts

P

Papec Machine Co., Shortsville, N.Y. 14548

Leaf blower

Par Aide Products Co., 296 No. Pascal Street, St. Paul, Minnesota 55104

Complete Line of Greens and Tee Accessories equipment including: golf ballwashers, flag poles and flags, tee towels, detergent for golf ballwashers, aluminum and plastic putting cups, hole cutters, cup setter, cup puller, rule signs, custom tee plaques, furniture for locker room and tee benches; spike rushes, sand trap rakes, etc.

Parco Products Co., Pottstown Ave. & Dotts St., Pennsburg, Pa. 18073

Dragon Model 180, backpack sprayer

Pargo, Inc., 4300 Raleigh St., Charlotte, N.C. 28205

Pargo golf carts, Models 803 & 804, 3 & 4 wheel electric golf carts

Pacific Agro bags it!

NITROFORM*
organic nitrogen

The organic nitrogen with guaranteed W.I.N. to combat leaching problems.

Turf and Horticultural Products, Synthetics Dept.
Wilmington, Delaware 19899

HERCULES INCORPORATED

Empire, 4 wheel electric personnel carrier
Bahama Bar Car, 4 wheel electric serving vehicle

Parker Sweeper Company, Box 720, Springfield, Ohio 45501
Estate Master, 3-gang sweeper for turf or large area cleanup
Hurricane Blowers, for windrowing leaves etc. for easy collection
Trail Thatch, a large three-gang Thatch-O-Matic for dethatching large areas

Partner Industries of America, Inc., 2733 W. Fulton, Chicago, Ill. 60612
Saws, chain, six models, 10 1/2-17 lbs. weight, automatic chain oiler

Perma-Rain Irrigation, Inc., P.O. Box 880, Lindsay, Calif. 93247
Filter, sand, silt, etc. (irrigation)
Emitter, "E1" for irrigation—trees/shrubs; "Perma-Flo E1"
Fogger, Perma-Rain, for tree and shrub irrigation and plant cooling

R. E. Phelon Co., Inc., 70 Maple Street, East Longmeadow, Mass. 01028
Phelon, flywheel type ignition
RepcO, systems and repair parts

J. Pickrell Co., 734 E. Southern Pacific Dr., Phoenix, Ariz. 85034
Mogator Utility tractor, two-passenger, 25 hp gas, 3,000 lb. load capacity, four-wheel drive, center articulated steering; accessories; hydraulic dump bed, cab and windshield, hyd. blade

Pioneer, OMC-Lincoln, P.O. Box 82409, Lincoln, Nebraska 68501
Pioneer P 40, 4.0 cu. inch engine chain saw for

professional use
Pioneer P 20, 3.1 cu. inch displacement chain saw for casual use
Pioneer P25, 3.1 cu. inch displacement chain saw for casual use
Pioneer 1200 A, 3,546 cu. inch displacement chain saw

Piper Aircraft, Bald Eagle Street, Lock Haven, Pa. 17745
Aircraft, fixed wing

Piqua Engineering, Inc., 234 First St., Piqua, Ohio 45356
Lickity Log Splitters
Lickity Brush Chippers
Lickity Can Compactors
Piqua Paper Balers

Pitman Manufacturing Co., Div. A. B. Chance Co., P.O. Box 120, Grandview, Mo. 64030
Aerial bucket, ML-28, ML-32
Digger/derrick PC 650
Hydraulic truck crane HL-140

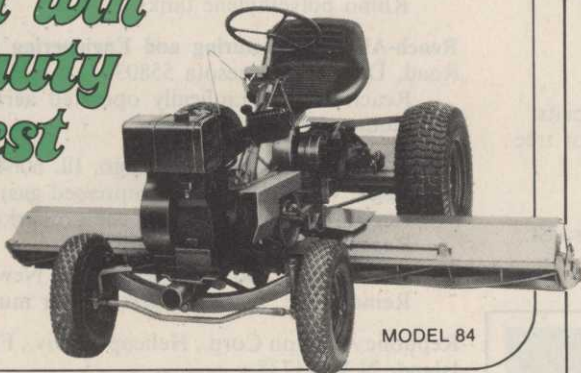
Plasti-Chain Corporation, P.O. Box 267, Hebron, Illinois 60034 (312) 272-5137

Plasti-Chain Polymer Chain and Steel re-inforced Ground Posts, for use around golf course tees, cart pathways, etc.; connecting links and S-hooks also available; each of 3 sizes in chain and all-purpose posts available in white and black; chain available also in blue, red, green, and yellow

Estate Fencing, plastic chain and steel re-inforced posts pre-packaged as follows: Corner Pack Kit, contains 3 posts and two 10-foot lengths of chain; available in black, white, or in combinations; perfect for fencing off restricted areas or to indicate danger areas

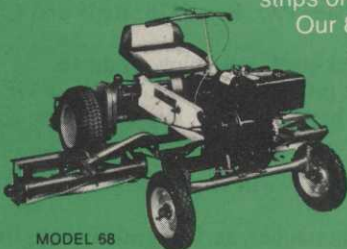
Guideline Lane Equipment, available in 40-inch high/2 1/2-inch diameter, heavy duty "base" stanchion; in black, or white supplemented by two sizes of plastic chain

*A workhorse
won't win
a beauty
contest*



MODEL 84

You won't find fancy shrouds, shiny hubcaps or chrome accent strips on a NATIONAL "workhorse." Our 84" and 68" Triplex Mowers are not designed for beauty...*Just performance and durability!*



MODEL 68

FAST! With an 84 and 68-inch cut, NATIONAL Triplex mowers cut grooming time in half around greens and traps.

EFFICIENT! National's Triplex maneuvers sharply, climbs banks and hillsides easily and safely. Three, power driven, free-floating reels follow ground contour. Reels do a precision job without skip or scalping. Handles the clubhouse lawn and practice areas, too!

DURABLE! Timken bearings; automotive-type transmissions; heavy duty, tubular steel tie rods and bed knife frame; and cutter lip bar... all add up to more years of use!

SERVICEABLE! No-nonsense design makes normal service faster than any mower on today's market!

NATIONAL...our reputation is your guarantee of quality! Our start in 1919 makes us one of the (if not the) oldest power mower manufacturers in the U.S.A.



NATIONAL
Mower Company

660 Raymond Avenue • St. Paul, Minnesota 55114
Phone: 612/646-4079

available in black, white, red, blue, green, or yellow; connecting links and S-hooks also available by color; Guideline Lane Equipment is ideally suited for directing crowds at all indoor functions, outdoors in parking lots or at field events, or where ever people gather; easy to set up, move, remove, or store; permanently attractive, requires no maintenance. Stanchion can be weighted with sand or water via hollow base

Plastic Techniques, Inc., P.O. Box 197 New Boston, N.H. 03070

Plastic Techniques, aerial lift truck accessories

Plastiline, Inc., 1251 N.E. 48 St., Pompano Beach, Fla. 33061

Plastic pipe fittings
Wedge-O-Flex gasket fittings

H. K. Porter, Inc., 74 Foley St., Somerville, Mass. 02143

Cutters, bolt, rod, cable, chain, etc.
Shears, lopping
Trimmers, tree
Shears, pruning
Cutters, brush and root

Beard-Poulan Division, Emerson Electric Co., 5020 Flournoy-Lucas Rd., Shreveport, La. 71109

Poulan, gasoline chain saws; electric chain saws

Power Spike Mfg. Co., Walters, Okla. 73572

Power Spike, spiker

Precision Chipper Corporation, Box 360, Leeds, Ala. 35094

Chipper, heavy-duty, industrial, feed through rate of about 125 feet per minute

The Prestolite Company, 511 Hamilton Street, Toledo, Ohio 43694

Batteries, spark plugs, ignition parts, magnito ignition systems, wire and cable

Princeton Manufacturing Co., 2625 Johnstown Road, Columbus, Ohio 43219

Princeton Sod Harvester, self-propelled harvester, cuts and stacks sod on pallets

Product Development International, Box 676 Liberty, S.C. 29657

Tree-Injectors, systemic tree injection kit
Riggin-Buddy, rigging device for tree workers
Magic Knot, mechanical fastener for rope tying
Quick Cablers, easy tree bracing system
Tool Holders, for holding tree workers tools on belts
Climber's Tie-In Strap, lightweight safety strap for tree climbers
Training Manuals, for all tree care people

Public Health Equipment & Supply Co., 1720 So. Presa St., San Antonio, Texas 78210

Swingfog SN 11 high performance fog generator (thermal)

Fontan knapsack sprayers

Fontan knapsack dusters

Fontan knapsack granular applicators

Fontan knapsack flame throwers

Lownes engineering "Leco" ULV cold fog generators

Buffalo turbine sprayers, dusters and ULV equipment

Q

Quadra Mfg. Ltd., Box 491, Trail, B. C., Canada

Frontier, super-light weight chain saws

Quality Marsh International, P.O. Box 406, Thibodaux, La.

Quality, amphibious marsh and swamp equipment; amphibious draglines; amphibious personnel carriers; amphibious roto booms

R

R.A.M. Industries, Inc., 125 N. 10th. Street, Waukee, Iowa 50263

R.A.M. Industries, Inc., Schuster gooseneck trailer line: grain, livestock, flatbeds, machinery

RainBird Sprinkler Mfg. Corp., P.O. Box 37, Glendora, Calif. 91740

Impact sprinklers, spray heads, rotor pop-up sprinklers, electric valve-in-head sprinklers, hydraulic valve-in-head sprinklers, quick coupling valves, manual angle valves, electric remote control valves, hydraulic remote control valves, electric and hydraulic automatic controllers, specialty valves, valve markers, electric underground cable

Rain Jet Corporation, 301 S. Flower St., Burbank, Calif. 91503

Sprinkler heads for lawn & turf irrigation
Shower bath head — the only rotary massage shower head

Ornamental garden fountain — "Shower of Diamonds"

Rain-O-Mat Sprinklers, Inc., 12414 Whittier Blvd., Whittier, Calif. 90608

Sprinkler irrigation equipment

Raven Industries, Box 1107, Sioux Falls, South Dakota 57101

Fiberglass tanks
Rhino polyethylene tanks

Reach-All Manufacturing and Engineering Co., 436 Calvary Road, Duluth, Minnesota 55803

Reach-All, hydraulically operated aerial baskets, truck mounted hydraulic cranes

Rego, 4201 W. Peterson, Chicago, Ill. 60646

Rego, valves (LP and compressed gas)
Rego, regulators (LP and compressed gas)
Rego, oil-less air compressors

Reinco, Inc., P.O. Box 584, Plainfield, New Jersey 07061

Reinco, Inc., hydrograssers, power mulchers

Republic Aviation Corp., Helicopter Div., Farmingdale, Long Island, N.Y. 11735

Aircraft, helicopter

Ridge Plastics Co., Highway 18 East, P.O. Box 2205, Jonesboro, Arkansas 72401

Biaxially oriented HD plastic pipe, sub-irrigation

Robco, Inc., 2800 Bay Road, P.O. Box 5326, Redwood City, Calif. 94063

Robco—Hatsuta, back-pack mist blower, duster
Robco, high pressure piston pumps, 4 GPM to 28 GPM;
Hand sprayers and hand dusters; High pressure vinyl spray hose

Rockwell International, 5001 North Rockwell Ave., Bethany, Oklahoma 73008

Rockwell Thrush Commander, agricultural aircraft, fixed wing



Mission bags it!

NITROFORM*

organic nitrogen

The long-lasting economical nitrogen that pampers turf with slow, sustained nourishment. Best choice for nursery stock.

Turf and Horticultural Products, Synthetics Dept.
Wilmington, Delaware 19899

* Registered trademark of Hercules Incorporated. STH74-16



Rogers Bros., 100 Orchard St., Albion, Pa. 16401
Trailers

Roof Mfg., 1011 W. Howard St., Pontiac, Ill. 61764
Ranger, mower, self-propelled, tilt blade for heavy cutting, 5 hp or 7 hp, 24-inch or 26-inch cut
Roof 400, mower, push, blade clutch, 5 hp, 21-inch or 24-inch cut, belt driven blade

Root-Lowell Mfg. Corporation, 1000 Foreman Road, Lowell, Michigan 49331
Durapower, power sprayer: 10 gpm double piston pump @ 400 p.s.i., tanks 100, 200, 300 gallons
Spraycat, power sprayer: 3 gpm single piston pump @ 250 p.s.i., tanks 15, 30, 50 gallons
Duracyl "10", pump: double piston, 10 gpm @ 400 p.s.i.

Roper Corporation, 1905 W. Court St., Kankakee, Ill. 60901
Saws, chain; manual and automatic; dual system chain oiler

Rosco Manufacturing Co., 3118 Snelling Ave., So., Minneapolis, Minn. 55406
Rollpac, steel wheeled roller, lawn, asphalt paths, etc.

Roseman Mower Corporation, 2300 Chestnut Avenue, Glenview, Illinois 60025
Roseman, mowers—gang reel, both mounted and hydraulic driven; tiller rake—landscape tiller rake

Rotary Power, Inc., P.O. Box 244, Centerville, Tennessee 37033
Kurb Kutter, tractor mounted curb edger for grass
Hydrajust tractor seat, self leveling tractor seat

Roto-Hoe Co., Newberry, Ohio 44065
Cut 'N Shred, shredder, 3½ hp, interchangeable with tiller

Rowco Mfg. Co., Inc., 48 Emerald St., Keene, N.H. 03431
Brushking®, brushcutter, engine driven

Royer Foundry & Machine Co., 158 Pringle St., Kingston, Pa. 18704
Royer Shredders, Models 362, 262, 180, 120, 12, 10, and 8
Power Screens, Models 30 and 42
Royer Chipper, Model 2600 PTO & 2640 self-powered

Ryan, OMC-Lincoln, P.O. Box 82409, Lincoln, Nebraska 68512
Ryan turf equipment, full line of turf aerators, spikers, renovators

Joseph T. Ryerson & Son, Inc., P.O. Box 8000-A, Chicago, Ill. 60680
Landscape Edging, steel

S

S & H Industries, Inc., Cleveland, Ohio
Tailgates, lifting

Sabre Saw Chain, Inc., Third Ave. and Sabre Drive, Niagara Falls, N.Y. 14304
Sabre, saw chain, guide bars, sprockets, wedges, files, accessories

Safeline Products, P.O. Box 550, Putnam, Conn. 06260
Respirators (all types), lung protection
Safety Glasses and goggles, eye and face protection
Hearing protectors, muff-type and ear plugs
Hard hats and caps, plastic safety hats and caps

Safe-T-Lawn, Inc., 7800 N.W. 32nd St., Miami, Florida 33122
Safe-T-Rain, rotor pop-up (ball drive)
Safe-T-Rain, valve inhead type
Rise-N-Rain, impact type pop-up
GL-67, 2" pop-up spray type
GL-71, 6" pop-up spray type

Safety Test & Equipment Co., Inc., P.O. Drawer 400, Shelby, North Carolina 28150

Wood/Chuck, manufacturer of Wood/Chipper capable of chipping logs up to 8" in diameter
Safety Test, manufacturer of complete line of tree trimming and linemen's equipment

Satoh Tractor c/o NEDA, P.O. Box 5025, Richmond, Va. 23220

S-650G, tractor, utility, 25 hp; water-cooled, 4-cylinder engine, category I—3-point linkage; 2-speed PTO, 540 and 1,000 rpm
S-550G, tractor, utility, 17 hp; water-cooled, 4-cylinder engine, Category I—3-point linkage; 540 PTO

Schutt's Equipment Co., P.O. Box 412, Birmingham, Mich. 48012

Schutt's Marvel Tree Diggers, front loader models from 18" to 60" ball sizes; Back hoe models from 18" to 36" ball sizes
Schutt's Root Pruners, 3-point hitch models from 16" to 22" ball sizes

Schwartz Mfg. Co., Box 248, Lester Prairie, Minn. 55354

Trailers, fifth wheel, Lo-Boy w/fold down rear section
Platforms, truck, hydraulic tilt bed
Crane, hydraulic, truck mtd.
Loaders, tractor, front end

Scott Aviation, Plant 4, 1201 Kalamazoo St., South Haven, Michigan 49090

Scott Duo-Seal Respirators, respirators
Full vision gas masks, gas masks

M. J. Scott, Co., 721 W. 2nd, Hutchinson, Kansas 67501

Grasshopper, rotary riding mower

Selma Trailer & Mfg. Co., P.O. Box 120, Selma, Calif. 93662

Aerial buckets—articulated boom lifts 20 to 55 feet from ground; telescoping bucket from 20 to 55 feet

Seymour Smith & Son, Inc., 900 Main St., Oakville, Conn. 06779

Garden tools, pruning shears, grass shears, hedge shears, lopping shears, tree pruners, pruning saws

Sikorsky Aviation Div., United Aircraft Corp., Stratford, Connecticut 06497

Aircraft, helicopter

Simplex Mfg. Co., 5224 N.E. 42nd Ave., Portland, Oregon 97218

Greenhouses

Simplicity Mfg. Co., 500 N. Spring St., Port Washington, Wis. 53074

Lawn and garden tractors with wide range of hp tillers, turf rollers, mowers, rotary, reel, gang, sicklebar



Leon Short bags it!

NITROFORM*
organic nitrogen

The quality long-lasting organic with guaranteed W.I.N. for predictable performance.

Turf and Horticultural Products, Synthetics Dept.
Wilmington, Delaware 19899

*Registered trademark of Hercules Incorporated. STH74-6



- Skaggs Turf Equip. Co.
Rakes, all purpose
- Skil Corporation, 5033 Elston Ave., Chicago, Ill. 60630
Skilsaw, chain saws
- R. & G. Sloane Mfg. Co., 7606 N. Clybourne Ave., Sun Valley, Calif. 91352
GSR Color Guard, PVC fittings for pipelines, sizes include 3/4-inch through 2 inches class 315 and 2 1/2 inches through 8 inches; class 200, press rated
- Slope Tractor, Inc., 106 W. 9th Ave., Harper, Kansas 67058
Slope Runner, tractor mower, rotary flail or sickle, adjustable angle hydraulic lever control adjusts wheels and tractor chassis to remain in level attitude on a slope
- Smith & Co., Inc., D.B., 414 Main St., Utica, N.Y. 13503
Sprayers, complete power unit
- Smith Precision Products Co., 1299 Lawrence Dr., Newbury Park, Calif. 91320
Measure-Mix, measures precise mixture of fertilizer to water when watering shrubs, lawns, etc.
- Smithco, Inc.**, 11 West Ave., Wayne, Pa. 19087
Red Rider, 3-wheel turf vehicle
Top Rider, top dresser
Little Beaver Spiker, spiker
Easy Rider III, sand trap rake
Lark, 110-gallon fiberglass sprayer
Hawk 200, 200-gallon fiberglass sprayer w/Golden Eagle pump
Hawk 300, 300-gallon fiberglass sprayer w/Golden Eagle pump
Cardinal, 200-gallon stainless steel sprayer w/Golden Eagle pump
Little Red, 6 1/2 hp 3-wheel turf vehicle
- The Snow Company**, 4350 McKinley, Omaha, Nebraska 68112
Snowco, utility trailer, Power-Kart, umbrella/buggy top, Nomad/Tri-Scat/Super-Scat
- Soilmoisture Equipment Corp., P.O. Box 30025, Santa Barbara, Calif. 93105
Jet Fill Tensiometer No. 2725, moisture measuring equipment for irrigation control, semi-permanent installation, sizes 6" through 60"
Quick Draw Tensiometer No. 2900, Moisture measuring equipment for irrigation control, portable, sizes 12" through 18"
Turf Probe No. 2950, double action tensiometer measuring moisture at 2" and 5", portable
Soilmoisture Tensiometer No. 2710, moisturing measuring equipment for irrigation control, semi-permanent installation, sizes 6" through 60"
Soil Water Sampler No. 1900, Obtains soil water for laboratory analysis and leaching determinations, permanent installation, sizes 6", 11", 24", 36", and 48"
Soil Sampling System No. 215, "Veihmeyer/King" soil sampling probes, sizes 4' through 16'
Soil Auger No. 230, auger equipment for strata identification, core sizes of 2", 3", 3 1/2", and 4"
Salinity Sensors & Bridge No. 5500, salinity sensing equipment for field use, portable
Plant water status console No. 3000, portable plant moisture stress indicator
- Solo Motors, Inc., P.O. Box 5030, 5100 Chestnut Ave., Newport News, Virginia 23605
Sprayer, Model 425 hand operated
Mistblower, Model 410 3 hp, Model 423 5 hp
Tractor Sprayer, 10 hp, Model 424 self-propelled; 18 hp, Model 450 self-propelled; Model 451 PTO mounted; Model 452 PTO mounted; 10 hp, Model 419 super custom mounted
Newport, blower Model 430 5 hp, mini Model 410 3 hp
Chain Saw, Model 610 3 SAE hp, Model 620 4 SAE hp, Model 650 6 SAE hp, Model 635 8 SAE hp, Model 660 7 SAE hp
Mower, sickle bar, 6.5 SAE hp, Model 520
Water Pump, 6.5 SAE hp, Model 801
Garden Tractor, Model 527 tiller 6.5 hp
Post Hole Digger, Model 812, 6.5 hp
Snow Blower, Model 813, 6.5 hp
Generator, Model 819, 110 volt
Engine, Model 272, 6.5 hp
- Speedex Tractor Co., 367 N. Freedom St., Ravenna, Ohio 44266
Lawn & garden tractor, 8hp, 10hp, 13hp
Rotary mowers 36", 44", 50"
- Spray Baby, Inc., 751 N. Edmonds Dr., Carson City, Nev. 89701
Seeders, hydraulic
Mulchers, hydraulic
Agricultural sprayers
- Spraying Systems Co.**, North Avenue at Schmale Road, Wheaton, Illinois 60187
TeeJet, spray nozzles with interchangeable spray tips
Foam Jet, spray nozzles with interchangeable spray tips
Vee Jet, spray nozzles
GunJet, spray guns
FloodJet, spray nozzles
- Sprinkler Irrigation Supply Co., Div. A. J. Miller, Inc., 1316 Campbell Rd., Royal Oak, Michigan 48067
Pipe, irrigation
Irrigation systems, complete
Sprinklers
- Standard Mfg. Co.**, 220—E. 4th St., Cedar Falls, Iowa 50613
Standard, golf course equipment
- Stanley Hydraulic Tools, Div. of the Stanley Works**, 13770 S.E. Ambler Road, Clackamas, Oregon 97015
Pruners, hydraulic
Pole pruning saws, chain & circle hydraulic
Chain saws, hydraulic
Alternator, hydraulic
Sump pump, hydraulic
- Stihl American, Inc.**, 107 Bauer Dr., Oakland, N.J. 07436
Chain Saws, electric and gasoline powered
Stihl SG-17, blower/sprayer, back-pack gasoline powered
Stihl Cutquik, saw, circular cut-off for cement, stone, steel, pipes, etc.
Stihl earth auger and planting tool, gasoline powered
Stihl Brush-Cutter, brush and weed cutter, gasoline powered
Stihl Hedge-Trimner, hedge trimmer, gasoline powered, trim hedges and small brush/trees
- Stone Construction Equipment, Inc., 32 Main, Honeoye, N.Y. 14471
Stone, digger—12 volt, operates off of 12 volt system; 2" to 7" digger dirt augers for digging post holes and holes for trees, shrubs, etc.
- Sudbury Laboratory, Inc., 572 Dutton Rd., Sudbury, Mass. 01776
Sudbury Soil Test Kits, designed to make "on-the-spot" tests for nitrogen, phosphorus, potash and acidity/alkalinity; simple to use "as easy as reading a thermometer."
- Sun-Mastr Corp., P.O. Box 31, Olathe, Kansas 66061
Safti-Shear, 74" and 90" flail mowers
Sun Mastr, mid-mount mowers; rotary cutters 60"-72"-84"; 60" and 72" rear-mount mowers; 3-gang and 5-gang reel mowers
- Swan Hose Div.—Amerace Corp., P.O. Box 509, Worthington, Ohio 43085
Swan, garden hose, Industrial and maintenance hose

Sweepster, 2810 Baker Road, Dexter, Michigan 48130
 C-36, self-propelled Walk Behind, 3' wide, 5 hp
 C-48, 4' wide front mounted compact tractor broom
 B-60, 5' wide front and rear mounted broom for grounds maintenance tractors
 TR-48, 4' wide tow behind pick-up sweeper, 5 hp
 AH, 6' wide 32" diameter front mounted tractor broom, all hydraulic operation, hydraulic swing, run and lift
 HF, 6' wide 32" diameter front mounted tractor broom, mechanical drive
 R-HF, 6' wide 32" diameter rear mounted on 3-point hitch, mechanical drive
 HH-60, 5' wide loader mounted pick-up sweeper (for fork lifts also)
 LH, 6' wide 32" diameter loader mounted sweeper
 C-72, compact truck mounted broom

Swenson Spreader & Mfg. Co., P.O. Box 127, Lindenwood, Illinois 61049

Spreader, gas, hydraulic
 Thatcher, attachment for rotary mowers
 Leaf Loader, trailer mounted

T

TCI, Inc., Box 249, Benson, Minn. 56215
 Tyler, 2 to 8-ton pull type fertilizer spreaders; 15' to 45' anhydrous ammonia applicators
 Herculift, 4-wheel drive rough terrain forklifts
 Super Challenger, 4-wheel drive, 1 yard bucket loader

Tallman Equipment Co., Inc., 3825 W. 31st St., Chicago, Illinois 60623
 Shears

Tecumseh Products, Co., Engine Div., 900 North St., Grafton, Wis. 53024
 Tecumseh Engines, 2 to 18 hp, 4-cycle + 2-cycle, air and liquid cooled, single + twin cylinder
 Tecumseh genuine parts
 Peerless Gear Drives, transmission, transaxles, hydrostatic gear drives, right angle + T drives
 Taylor Mufflers
 SnowKing Engines

Teledyne Wisconsin Motor, 1910 South 53rd St., Milwaukee, Wisconsin 53246
 Wisconsin, Wisconsin-Robin, Wisconsin-Hatz Diesel, heavy-duty, air-cooled internal combustion engines, 3—80 hp, single, two, three and four-cylinder

Tennant Maintenance Systems, 721 North Lilac Dr., Minneapolis, Minn. 55490
 Hydraulic heavy-duty power sweeper for driveways, walks and maintenance areas covered with cement

Terrain King Corp., 4444 Center, Houston, Texas 77007
 Terrain King, rotary mowers—4'-25'
 Turner, flail mowers—(3-point and boom)
 Slopemower, boom type mowers—31' reach

Thomas Equipment, Ltd., Centreville, New Brunswick, Canada
 Mower, Sickle, attachment to front end loader

Thompson Manufacturing, 2251 E. 7th St., Los Angeles 90023
 Turf Irrigation Sprinkler and Accessories, gear driven rotary turf irrigation sprinklers

Tork Time Controls, Inc., 1 Grove St., Mt. Vernon, N.Y. 10550
 Tork, irrigation, automatic lawn sprinkler controls

The Toro Company, 8111 Lyndale Ave., So. Bloomington, Minn. 55420
 Hevi-Duty, mower, rotary (hand or self-propelled) 21 inch and 25 inch
 Whirlwind, mower, rotary, 31-inch

Trojan, 60-inch cut
 Professional, mower, triplex reel, 70-inch, 76-inch and 84-inch cut
 Greenmaster, mower, walk greensmower, 21-inch
 Greensmaster 3, mower, triplex greensmower, riding
 Spartan Gang, mower, 5, 7 or 9 bladed-formal and semi-formal turf
 Landscaper 4, multi-purpose landscaping tool for seedbed preparation, seeding, fertilizing, also Model 6 Pro.
 Rake-O-Vac, turf and hard surface sweeper
 Parkmaster, 5-7-9 unit hydraulic mowing tractor
 Roughmaster, 4 and 5 bladed rough area reel mowers
 Toro Frames, reel mower transport and lift frames
 Toro Turf Tractor, utility turf tractor
 Sandpro, sand trap maintenance and grooming unit, all hydraulic
 Groundsmaster 72 with 70½-inch cut, riding rotary mower and other implements
 Workmaster, utility vehicle
 Groundsmaster 50 with 50 inch cut, riding rotary mower and other implements

Toro Irrigation Division, P.O. Box 489, Riverside, Calif. 92502
 Automatic Controller, irrigation equipment, hydraulic or electric; 4, 8, 11, 23 station control and satellites
 Automatic Remote Control Valves, ¾-inch to 2-inch, hydraulic or electric
 Pop Up Spray Sprinklers, 8-54 ft. diameter stream spray
 Pop Up Rotary Sprinklers, 65-235 ft. diameter, valve in head, hydraulic or electric, 2-speed, gear driven
 Shrub and Bubbler Sprinklers, adjustable, stream, flood, low angle
 Boring Machine, 10 ft. and 16 ft. models
 Trenching Machines, residential, light commercial, 2 inches wide, 9 inches deep
 Quick Coupling Valves, standard, vinyl or with lock cover, valve range ¾-inch to 1½ inches
 Impact Sprinklers, ½-inch to 1¼ inches threaded connection, part of full circle

Towner Mfg. Co., P.O. Box 6096, Santa Ana, Calif. 92706
 Harrows, disks
 Harrows, springtooth
 Tool box equipment
 Ditchers; slopers

Tradewinds, Inc., P.O. Box 1191, Tacoma, Washington 98401
 Holder, tractors, 4-wheel drive, diesel, 14 hp to 40 hp; tractor mounted sprayers, PTO pumps, complete with turbulator mistblowers, (all sizes from 22 gallons up); knapsack power sprayers (for mist, dust, granules, flamethrowers, etc.) world's only packsack sprayer with centrifugal pump

Travelrain Power Sprinkler Co., 239 No. Robertson Blvd.,

Lebanon bags it!

NITROFORM*
 organic nitrogen

The economical nonleaching nitrogen that's great for turf, trees, shrubs, and evergreens, too.

HERCULES INCORPORATED

Turf and Horticultural Products, Synthetics Dept.
 Wilmington, Delaware 19899

*Registered trademark of Hercules Incorporated. STH74-13

Beverly Hills, Calif. 90211

Travelrain Power Sprinkler, (irrigation) traveling sprinkler
Sharpomatic, drill & Tool sharpener (electric)

Tree-ject Company, Box 396, Waycross, Ga. 31501
Sprayers, hose end, complete power unit

Triumph Machinery Co., Willow Grove St., Hackettstown, N.J. 07840

Rakes, landscape
Thatchers, mower, vertical

Mowers, sickle bar; rotary, heavy-duty
Trojan Battery Company, 9440 Ann St., Santa Fe Springs, Calif. 90670

Trojan, storage batteries—electric golf car, automotive, commercial, truck, bus, and industrial chargers

Turf Service Laboratory, Inc., P.O. Box 1001, Laguna Beach, California 92652

Moistureometer Model 50, portable 12" probe electronic measures soil moisture from 1 inch to one foot
Moistureometer Model 20, garden angel portable 6-inch probe designed for measuring moisture in pots
Moistureometer Model 75, one meter probe designed to measure moisture at depths of one meter, 75 CM, 50 CM, and 25 CM permanent installation; meter separate digital read out

Turf Vac Corporation, P.O. Box 4339, Long Beach, Calif. 90804

Turf Vac, self-propelled rider vacuum
Fairway Master, sweepers—18-25 hp with hydraulic drive systems, blower attachments, and hand pick-up hose attachments, and hydraulic lift dump available; towed units 4 1/2' to 10' wide, 10 1/2-25 hp or PTO; hydraulic lift dump and hand intake hoses available

U

Universal Motor Division, Medalist Industries, Box 2508, Oshkosh, Wisconsin 54901

Aquamaster Pumps, portable centrifugal pumps 1 1/2" or 2" suc/disch., 3 hp gas engine or 1/2, 3/4, 1 1/2, 2 hp electric motors, standard seal for water, corrosion resistant seal for fertilizer, herbicides, etc.
Universal electric generators and battery chargers. 1200-3500 watts and 12-32V. Portable

Up-Right Scaffolds, 1013 Pardee St., Berkeley, Calif. 94710
Scaffolds, portable, aluminum for tree trimming

Utility Body Co., 901 Gilmen, Berkeley, Calif. 94710
Buckets—aerial towers

V

Val-Jac Mfg. & Supply Co., Inc., 110 N. Park, Maize, Kansas 67101

Small truck compactor for parks and recreational areas

Valley Products Corporation, Box 668, Valley, Nebr. 68064
VPC Stump Cutter, 8 hp one-man tree stump remover

Vandermolen Corp., 119 Dorsa Ave., Livingston, N.J. 07039
Blower KWH, for leaves and debris, wheeled, 2-cycle engine

KWH Mistblower, back pack
Diadem Brush Chipper, for branches up to 3", wheeled, PTO or skid models, 8 and 12 hp models
Bora KWH Mistblower, skid model, 110-gallon tank, 75-80 ft., reach fan power by rotary engine
Diadem Spreader/Seeder, broadcaster, PTO driven, 3-pt. hitch
Flykil, electric flykiller

Venable Sprinkler Sales, Inc., P.O. Box 1105, 3401 Conflans, Irving, Texas 75061

Pump-A-Matic, pre-built pump station for golf course, etc., irrigation
Pressure-Matic, booster pump unit to increase pressure of water in hydraulic system tubing to use potable water

Veri Products, P.O. Box 5129, Cardwell Station, Fresno, Calif. 93705

Scabbards for chain saws

Vermeer Manufacturing Company, P.O. Box 200, Pella, Iowa 50219

Stump Cutters, 12-65 hp, four models
Tree Spades, 4 models (trailer or mounted)
Log Chippers, 2 models
Log Splitter,

Vicon Farm Machinery, Inc., 5898 Poplar Hall Drive, Norfolk, Virginia 23502

Vicon, mower (disc), power harrow (recoplicatins) fertilizer spreader (pendulum), hay rake, (wheel type)

Viking Pump Co., 4th and Shutte Sts., Cedar Falls, Iowa
Pumps

Village Blacksmith, McGraw Edison Portable Electric Tool Division, 1200 East State St., Geneva, Illinois 60134

Village Blacksmith, garden cutting tools, electric chain saws, electric hedge trimmers, electric edger trimmers, electric cultivator, Cord Reels, "Blitz Fog" insect fogging devices, gas engine fogger, electric tree surgeon, post hole diggers and augers

Vineland Laboratories, Inc., 2285 E. Landis Ave., Vineland, New Jersey 08360

Proportioning systems

Vogel Tool & Die Corp., Stone Park, Illinois
Post hole drill

W

W-W Grinder, 2957 N. Market, Suite 169, Wichita, Kansas 67219

Shredder-Grinders, complete line of soil shredder-grinders for gardeners, nurseries, greenhouses, etc.; horsepower ranging from 1 hp models to 30 hp models; available with gas engines, electric motors or less power; some models feature electric start gas engines

Waco Industries, Inc., P.O. Box 367, 749 Airways Blvd., Jackson, Tenn. 38301

Chain saws products
Windsor chain, bars, sprockets and accessories

Waldon, Inc., 201 W. Oklahoma Ave., Fairview, Okla. 73737

Tractor, hydraulic, 4-wheel drive, articulating and oscillating type frame plus utility air, may be used as a forklift or loader
Pickup Broom, attachment to Waldon 5000 tractor
Forklift, boom type, attachment to Waldon 5000 tractor
Scrap Grab, attachment, lift capacity 1300 to 1900 lbs.
Backhoe, attachment to Waldon 5000 tractor

Walsh Manufacturing Co., 1200 Fisher Street, Charles City, Iowa 50616

Trailer Model Sprayer, exclusive sump trap, exclusive uni-stand, rear safety stand 200, 300, and 500-gallon cap.; built in nylon agitator
RA Side Mounted Sprayer, 400-gallon capacity; each tank valve controlled, 2-200 gallon tanks, custom fit mounting brackets, valve stand
3-Point Hitch Sprayer, 165, 200, or 300-gallon capacity, Cat. II hitch pins
Fiberglass Tanks (all above units), 10" x 20" fill hole; bullet shaped ends; built in agitators built in steel outlets; 1 1/4" steel sump outlet; double protection inner lining; lid with snap-over lock; special sump trap and anti-swirl baffle; continuous flow pump; sprays evenly over all terrain;

sprays to last drop
 Index-O-Matic Washer, completely portable; semi-pneumatic tires; all-steel frame 5 or 25-gallon tank; 3 GPM pump; 1 1/2 hp motor; fiberglass tank
 Tri-Matic II, fiberglass tank; completely portable; all-steel frame 25-gallon tank; 3 GPM pump; 1 1/2 hp motor; semi-pneumatic tires
 Dutch Elm disease tree injector applicator, (3) gallon-pressure tank, nozzle injector assemblies, 60 lb. gauge, length of hose, hose shut-off, and driving tool

Waymark, 44 River St., Cortland, N.Y. 13045

Spreaders, disc type
 Sprayers, boom; complete power unit

Wayne Engineering Corp., 1st & Iowa Sts., Cedar Falls, Iowa 50613

Honey B, lightweight refuse packer for parks highway rest stops, etc.
 Pup, pickup refuse packer

Weather-matic Division/Telsco Industries, P.O. Box 18205, Dallas, Texas 75218

Weather-matic, controls, electric valves, solenoids, rotary heads, spray heads, nozzles, accessories (irrigation equipment)

H. N. Webster Mfg., P.O. Box 1628, Sebring, Florida 33870

Webstermatic, irrigation, quick coupling riser valves sizes 1/2" to 1 1/4"

Weed Eaters, Inc., 5146 Richmond Ave., Houston, Texas 77027

Weedy, for commercial use: 3 hp, 2-cycle Tecumseh engine powers patented cutting head which employs "fishing line" to trim, edge and cut grass and weeds along chain link fences, trees, ditches, cemetery markers, culverts, etc., wt. 28 lbs.
 Needle, 3/4 hp permanent magnet motor—wt. 6 1/2 lbs.; performs the same tasks as above with less punch

Welsh Mfg. Co., 9 Magnolia St., Providence, R.I. 02909

Respirators, for use in pesticide application
 Ammonia respirators
 Dust respirators
 Goggles
 Safety caps
 First aid equipment

Western Products, 1234 N. 62nd St., Milwaukee, Wis. 53213

Western Snow Plow, truck mounted snowplow and controls

Westinghouse Electric Corp., P.O. Box 712, Redlands, Calif. 92373

Westinghouse, Electric golf cars

Wet Mfg. Co., Inc., 955 Elm St., Orange, Calif. 92667

Sprinkler irrigation equipment
 Sprinkler head, gear driven rotary pop-up
 Automatic controller, 7, 14, and 21 station
 Remote control valve, electric 3/4" thru 2" size
 Boring tool, used for boring under walks, driveways etc.

Wheel Horse Products, Inc., 515 W. Ireland Rd., South Bend, Indiana 46614

Wheel Horse D-200 Automatic, 19.9 hp twin cylinder tractor; featuring—automatic transmission with "no belt" drive; front and rear 2,000 rpm PTO's; category "O" three point hitch; Super Seat; sealed beam head and taillights; dual hydraulic lifts; independent disc turning brakes; 8-gallon fuel tank; cluster dials; 3-way safety interlock system; and a choice of four tire options
 Wheel Horse D-180 Automatic, 18 hp twin cylinder tractor: featuring—automatic transmission with "no belt" drive; sealed beam head and taillights; hydraulic lift; 5 3/4-gallon fuel tank; cluster dials; two piece adjustable seat; front PTO; optional splined rear PTO; optional category

"O" three point hitch; optional disc turning brakes; 3-way safety interlock system; and a choice of four tire options
 Wheel Horse D-160 Automatic, 16 hp tractor; featuring—automatic transmission with "no belt" drive; front PTO; polyfoam seat; hydraulic lift; 5 3/4-gallon fuel tank; ammeter; many options; 3-way safety interlock system; and a choice of four tire options

Wheel Horse C-160 Automatic, 16 hp tractor: featuring—automatic transmission (hydrostatic-oil drive); hydraulic attachment lift; arm rests; 2-piece adjustable seat; spring seat suspension; ammeter; hour meter; 2-gallon fuel tank; unitized steel frame; head and taillights; friction disc PTO clutch; soft feel steering wheel; turf saver tires; and a 3-way safety interlock system
 Wheel Horse C-160 8-speed, 16 hp tractor; featuring—heavy-duty all gear 8-speed transmission; two piece adjustable seat; ammeter; 2-gallon fuel tank; unitized steel frame; head and taillights; friction disc attachment clutch; soft feel steering wheel; turf saver tires; optional electric lift; and a 3-way safety interlock system

Wheel Horse C-120 Automatic, 12 hp tractor; featuring—automatic transmission (hydrostatic-oil drive); two-piece adjustable seat; spring seat suspension; ammeter; 2-gallon fuel tank; unitized steel frame; head and taillights; friction disc attachment clutch; soft feel steering wheel; turf saver tires; optional hydraulic lift; and a 3-way safety interlock system

Wheel Horse C-100 8-speed, 10 hp tractor: featuring—heavy-duty all-gear 8-speed transmission; unitized steel frame; head and taillights; friction disc attachment clutch; turf saver tires; optional electric lift; and a 3-way safety interlock system

Wheel Horse B-100 automatic, 10 hp tractor featuring unitized steel frame; friction disc attachment clutch; turf saver tires; optional hydraulic lift; and a 3-way safety interlock system.



is the most accurate fertilizer spreader you can use.



Right behind the spreader. . . or 20 feet to each side. . . your turf gets the same amount of fertilizer if you use a Vicon. Field tests have proven it.

Vicon uses an exclusive system. . . a spout oscillating at 540 times per minute. This gives a rectangular coverage pattern that eliminates the overlapping and missed spots you get with fan spreaders.

Vicon is quality constructed to last for years. Major parts are non-corroding polyester and stainless steel. Application rate is easily adjusted from 10 to 2500 pounds per acre.

Even lime is no problem for the Vicon. It handles lime, fertilizer, seed and chemicals. Six hopper capacities from 600 to 7000 pounds suit your course and budget.

Vicon has the accuracy that professional turf men are looking for. Write today.



the better idea from Holland

Vicon Farm Machinery, Inc.

5898 Poplar Hall Drive • Norfolk, Virginia 23502

Wheel Horse B-80 4-speed, 8 hp tractor featuring unitized steel frame; friction disc attachment clutch; turf saver tires; optional electric attachment lift; and a 3-way safety interlock system

Wheel Horse D-Series Attachments; 60" rear mount mower; 48" side discharge mid-mount mower; 56" snow/dozer blade; 50" grader blade; 50" tiller; 36" aerator; 38" or 31" lawn sweeper; 32" lawn roller; 4-wheel wagon; 2-wheel dump cart; and a 48" snowthrower

Wheel Horse C-Series Attachments, 48" side discharge mower; 42" side discharge mower; 36" side discharge mower; 36" rear discharge mower; 42" snowthrower; 42" snow/dozer blade; 40" grader blade; 36" tiller; 36" aerator; 38" or 31" lawn sweeper; 32" roller; 2-section cultivator; harrow; 32" disc; lawn vacuum; 4-wheel wagon; and a 2-wheel dump cart

Wheel Horse B-Series Attachments, 36" side discharge mower; 36" rear discharge mower; 37" snowthrower; 42" snow/dozer blade; 40" grader blade; 36" aerator; 38" or 31" lawn sweeper; 32" lawn roller; 32" disc; 2-section cultivator; harrow; 36" tiller; 4-wheel wagon; and a 2-wheel dump cart

Wheel Horse A-Series Attachments, for A-80 42" snow blade; 36" aerator; 38" or 31" lawn sweeper; 32" lawn roller; 4-wheel wagon; and a 2-wheel dump cart

Willmar Mfg. Co., Wilmar, Minn.

Spreader, pull-type, floatation tires, spreads up to 1 1/2 tons per load

Willson Products Div., Ray-O-Vac. Co., 2nd and Washington Aves., Reading, Pa.

Masks, gas; dust
Respirators
Safety Equipment
Helmets

Wisconsin Marine, Inc., P.O. Box 28, Lake Mills, Wisconsin 53551

Bob-Cat, model 520-1, snow thrower, self-prop. 5 hp 20" 2-speed

Bob-Cat, model 520-2 snow thrower, self-prop., 5 hp 20" single speed

Bob-Cat, model 724-1 snow thrower, self-prop., 7 hp 24" 2 speed

Bob-Cat, model 724-2 snowthrower, self-prop., 7 hp 24" 2 speed

Bob-Cat, model 828-2 snow thrower, self-prop., 8 hp, 28"

Bob-Cat, model t-16-61, riding twin hydro mower, 16 hp 61 inches

Bob-Cat, model M-21 rotary lawn mower, 21 inch, engine options: 3.5 hp, 4 hp, 4 heavy duty, 5 H.D.

Bob-Cat, model M12-3.5 lawn trimmer, 12 inch, 3.5 hp

Wood Brothers, Inc., Hwy. 2 So., Oregon, Ill. 61061

RM 59, rear mounted rotary lawn mower; three blades cut a 5-foot swath; adapts to any standard 3-point hitch

Y

Yardman, The Leisure Group, Inc., Jackson, Michigan
Snow throwers, tractors, 8-20 hp

Yazoo Mfg. Co., 3607 Livingston Rd., Jackson, Miss. 39216
Yazoo Master Mowers, rotary 20"-76"; walking, riding tillers, edgers

Year-A-Round Cab Corp. (Jari Div.), P.O. Box 2075, Mankato, Minnesota 56001

Jari Chief, 3 hp, 32" sickle

Jari Monarch, 4 hp, 36" sickle

York Modern Corporation, Mill and Watson St., Unadilla, N.Y. 13849

York, rakes; landscape and lawn grooming

Cross Reference Guide To Manufacturers by Items

AERATORS

Brinly Hardy Co.
Hahn Inc.
Howard Rotavator Co., Inc.
Jacobsen Mfg. Co.
F. D. Kees Mfg. Co.
Ryan, OMC-Lincoln
Simplicity Mfg. Co., Inc.
Wheel-Horse Products

AERIAL BUCKET ACCESSORIES

Plastic Techniques, Inc.

AERIAL BUCKET LIFTS

Asplundh Chipper Co.
Baker Equipment Mfg. Co.
Correct Mfg.
McCabe-Powers Body Co.
Mobile Aerial Towers, Inc.
Pitman Mfg. Co., Div. A. B.
Chance Co.
Reach-All Manufacturing and
Engineering Co.
Selma Trailer & Mfg. Co.

AERIAL LADDERS

Adventure Line Mfg. Co.
Up-Right Scaffolds

AERIAL PLATFORMS

Adventure Line Mfg. Co.
Baker Equipment Mfg. Co.
H. D. Hudson Mfg. Co.

Lift-Quik Mfg. Co. (golf car lift)
Up-Right Scaffolds
Utility Body Co.

AIR COMPRESSORS

Rego Div., Golconda Corp.

AIRCRAFT, FIXED WING

Grumman Aircraft Corp.
Piper Aircraft
Rockwell International

AIRCRAFT, HELICOPTER

Bell Helicopter Co.
Republic Aviation Corp.
Sikorsky Aviation Div.

ALTERNATORS

Friend Mfg. Co.
Stanley Hydraulic Tools, Div. The
Stanley Works

AMPHIBIOUS EQUIPMENT

Quality Marsh International

AQUATIC WEED HARVESTER

A. O. A. Research & Development,
Inc.
Air-Lec Industries, Inc.
Aquamarine Corp.
Mud Cat Div. Of National Car Rental
Weed Eaters, Inc.

ARBORIST SUPPLIES

American Arborist Supplies
Bartlett Mfg. Company
Creative Sales, Inc.
Hortiscap, Inc.
Karl Kuemmerling, Inc.
Product Development International
Safety Test & Equipment Co.

AUGERS

Contree Sales, Inc.
Ferti-Feeder
Hoffco, Inc.
Johnson's Industrial Supply Co.
Pitman Mfg. Co.
Village Blacksmith

AUGERS, EARTH

Allis-Chalmers Mfg. Co.
Baker Equipment Engineering Co.
Bartlett Mfg. Co.
Johnson's Industrial Supply Co.

AUXILIARY POWER UNITS (See Generators)

BACKHOES

Allis-Chalmers
Arps Corp.
Charles Machine Works
Ford Tractor Operations,
North America
Howard Rotavator Co., Inc.
International Harvester Co.
Massey-Ferguson, Inc.
(Industrial Products)
Schutt's Equipment Co.
Vermeer Mfg. Co.
Waldon, Inc.

BAGS

B. A. G. Corporation
Bemis Company

BATTERIES

The Prestolite Co.

BATTERY CLAMPS

Dadco

BATTERIES, STORAGE

ESB Brands, Inc.
Trojan Battery Company

BATTERY CHARGERS

ESB Brands, Inc.
Onan Division of Onan Corp.
Universal Motor Div. Medalist Ind.

BINS, PORTABLE

Royer Foundry & Machine Co.

BLADES, DOZER-SCRAPER

(Also See Leveler)

Allis-Chalmers
Arps Corporation
Austin Products, Inc.
BMB Company, Inc.
Brillion Iron Works, Inc.
J. I. Case
Deere & Co.
DriAll, Inc.
Eversman Mfg. Co.
Ford Tractor Operations,
North America
Gravely, Div. Clarke-Gravely
Hesston Corp., Lawn Equipment Div.
International Harvester Co.
Johnson Hydraulic Equip. Co.,
Div. Arps Corp.
Massey-Ferguson, Inc.
Melroe Mfg. Co.
Simplicity Mfg. Co., Inc.
Walden, Inc.
Western Products
Wheel-Horse Products, Inc.

BLOWERS

Billy Goat
Conaway, Inc.
Echo Chain Saw Div., Kioritz Corp.
of America
Giant-Vac Mfg., Inc.
Hesston Corp., Lawn Equipment Div.
Mid-State Metal Casters & Mfg. Co.
Papec Machine Co.
Parker Sweeper Company
Robco, Inc.
Solo Motors, Inc.
Vandermolen Corp.

BOOM DYE MAKER

Contree Sales, Inc.

BORING UNIT

Charles Machine Works, Inc.
Toro Irrigation Division
Wet Mfg. Co.

BRIDGES, PORTABLE

Standard Mfg. Co.

BROOMS

(See Sweeper/Vacuums)

Clarke Div., Clarke-Gravely Corp.
FMC Corp., Sweeper Division
Parker Sweeper Company
Sweepster, Jenkins Equipment Co.
Waldon, Inc.

BRUSH CUTTERS

Asplundh Chipper Co.

Bombardier Ltd.
E. L. Caldwell & Sons, Inc.
Conaway, Inc.
Deere & Co.
Echo Chain Saw Div., Kioritz Corp.
of America
Friend Mfg. Corp.
Hoffco, Inc.
International Harvester Co.
McCulloch Corp.
National Hydro-Ax Inc.
H. K. Porter, Inc.
Rowco Mfg. Co., Inc.
Stihl American, Inc.
The Vandermolen Co.

BRUSH HOOKS

Asplundh Chipper Co.
Bartlett Mfg. Co.
Pitman Mfg. Co.

BUILDINGS (GOLF)

Game Time, Inc.

CARTS, SOIL TREATING

Lindig Mfg. Corp.

CHAIN, DECORATIVE

Ginther Equipment Corp.
Plasti-Chain Corporation

CHAIN SAWS

(See Saws, Chain))

CHEMICAL APPLICATOR, DRIP

Lakes Supply Co., Inc.

CHEMICAL APPLICATORS, GRANULAR

American Arborist Supplies
Asplundh Tree Expert Co.

Avco Ezee Flow
John Blue Co.
Buffalo Turbine Ag. Equip. Co.
Contree Sales, Inc.
Echo Chain Saw Div., Kioritz Corp.
of America
FMC Corp., Ag. Machinery Div.
Friend Mfg. Corp.
Gandy Co.
Herd Seeder Company, Inc.
Lakes Supply Co., Inc.
Larson Machine, Inc.
Lawn Medic, Inc.
Lely Corp.
Public Health Equip. & Supply Co.
Solo Motors, Inc.
Walsh Manufacturing Co.
Waymark

CHEMICAL APPLICATORS, LIQUID

Amchem Products, Inc.
Asplundh Chipper Co.
Avco Ezee Flow Div.
John Blue Co.
The Broyhill Co.
Buffalo Turbine Ag. Equip. Co.
Century Engineering Corp.
Contree Sales, Inc.
Deere & Co.
Echo Chain Saw Div., Kioritz Corp.
of America
Red Ewald, Inc.
FMC Corp., Ag. Machinery Div.
Friend Mfg. Corp.
Great Lakes Chemical Div.
H. D. Hudson Mfg. Co.
Lakes Supply Co., Inc.
Larson Machine, Inc.
Leigh Products, Inc.
Melnor Industries, Inc.

BROADLEAF WEEDS

controlled positively

with maximum safety
to sensitive grasses
and ornamentals



trimec

TURF HERBICIDES®

U.S. Patent
3,284,186

THE MOST CONTROL AT THE LEAST EXPENSE

PBI - GORDON CORPORATION

300 SOUTH THIRD STREET KANSAS CITY, KANSAS 66118

Telephone: 913/342-8780

F. E. Myers & Bro. Co.
 Root-Lowell Corp.
 Solo Motors, Inc.
 The Vandermolen Co.
 Walsh Manufacturing Co.
 Waymark

CHESTS, TOOL

Hemco Corporation
 Knaack Mfg. Co.

CHIPPERS (Also See Shredders)

American Arborist Supplies
 Asplundh Chipper Co.
 Billy Goat
 FMC Corp., Sweeper Div.
 F. D. Kees Mfg. Co.
 Karl Kuemmerling, Inc.
 Lindig Manufacturing Corp.
 M-B Company
 Metro-Chipper, Vestar Div.,
 Morbark Ind.
 Mitts & Merrill Inc.
 Morbark Industries, Inc.
 Olathe Mfg., Inc.
 Piqua Engineering Inc.
 Precision Chipper Corporation
 Royer Foundry & Machine Co.
 Safety Test & Equipment Co.
 Vandermolen Corp.
 Vermeer Manufacturing Co.

COMBS, TURF

Blue Bird International, Inc.
 Johnson Hydraulic Equip. Co.,
 Div. Arps Corp.
 Parker Sweeper Co.
 Ryan, OMC-Lincoln

COMPACTORS

B.A.G. Corporation
 Gotham Chicago Corp.
 M-B Company
 Val-Jac Mfg. & Supply Co., Inc.
 Wayne Engineering Corp.

CONTAINERS

Eagle Mfg. Co.
 Freund Can Co.



Bandini bags it!

NITROFORM®
 organic nitrogen



The economical nitrogen that feeds for months because it has different release rates... like time-release cold capsules.

Turf and Horticultural Products, Synthetics Dept.
Wilmington, Delaware 19899

Registered trademark of Hercules Incorporated. STH74-25

CRANES

Adventure Line Mfg. Co.
 Baker Equipment Mfg. Co.
 Blue Bird International, Inc.
 Cascade Corporation
 Dico Co., Inc.
 Ideal Crane Div., Bert Parkhurst
 Pitman Mfg. Co.
 Reach-All Manufacturing &
 Engineering Co.
 Rental Equip. Mfg. Co.
 Schwartz Mfg. Co.

DISCS, CULTIVATING

Allis-Chalmers Mfg. Co.
 Deere & Co.
 Engineering Products Co.
 Ford Motor Co., Tractor Div.
 International Harvester Co.
 Massey-Ferguson, Inc.
 Wheel-Horse Products, Inc.

DRAINAGE TUBING

ADS-Advanced Drainage Systems
 Amoco Chemicals Corp.
 Certain-Teed Daymond Co.
 Hancor, Inc.

DRILLS (FIELD)

(Also See Earth Augers &
 Post Hole Diggers)

Deere & Co.
 Gandy Co.
 Ground Hog, Inc.
 Hoffco, Inc.
 International Harvester Co.
 Massey-Ferguson, Inc.
 McCulloch Corp.

DRILLS (HAND & POWER TOOL)

Bartlett Mfg. Co.
 Black & Decker Mfg. Co.
 Fairmont Hydraulics
 Hoffco, Inc.
 Limb-Lopper Co., Inc.
 Skil Corp.
 Solo Motors, Inc.

DUMP CARTS

J. I. Case Co., Outdoor Power
 Equipment Div.

DUSTERS, HAND

Leigh Products, Inc.
 Public Health Equip. & Supply Co.
 Robco, Inc.

DUSTERS, POWER

John Blue Co., Inc.
 Buffalo Turbine Ag. Equip. Co.
 Curtis Dyna Products Corporation
 Echo Chain Saw Div., Kioritz Corp.
 of America
 FMC Corp., Ag. Machinery Div.
 H. D. Hudson Mfg. Co.
 Leigh Products, Inc.
 Robco, Inc.
 Root-Lowell Corp.
 Solo Motors, Inc.
 The Vandermolen Co.

EARTH AUGERS

(Also See Post Hole Diggers)

Ground Hog, Inc.
 Hoffco, Inc.
 Johnson's Industrial Supply Co.
 McCulloch Corp.
 Stihl American
 Stone Construction Equipment Inc.

EDGERS

Black & Decker

Cooper Mfg. Co.
 Gandy Company
 Jacobsen Mfg. Co.
 K-D Manufacturing Co.
 Rotary Power, Inc.
 Ryan, OMC-Lincoln
 Village Blacksmith
 Yazoo Mfg. Co.

EDGING, LAWN

Hortiscape, Inc.
 Rotary Power, Inc.
 Joseph T. Ryerson & Son, Inc.

ENGINES, DIESEL

Teledyne Wisconsin Motor

ENGINES, GASOLINE

Briggs & Stratton Corp.
 Clinton Engines Corporation
 Kohler Company
 Onan Div. of Onan Corp.
 Solo Motors, Inc.
 Tecumseh Products Co., Engine Div.
 Teledyne Wisconsin Motor

ENGINE STAND

Blue Bird International, Inc.

EROSION CONTROL MATERIALS

American Excelsior Corp.
 Conwed Corporation
 Grass Growers, Inc.

FERTILIZER APPLICATORS

Gandy Company

FERTILIZER INJECTION EQUIPMENT (Also See Injection Equipment)

Agresults, Inc.
 Andrasko Engineering Co.

FITTINGS, PIPE

Melnor Industries, Turf Div.
 Plastiline Inc.
 R. & G. Sloane Mfg. Co.

FLAMETHROWERS (SPRAYERS)

R. E. Chapin Mfg. Works, Inc.
 Echo Chain Saw Div., Kioritz Corp.
 of America
 FMC Corp., Ag. Machinery Div.
 H. D. Hudson Mfg. Co.
 Leigh Products, Inc.
 Public Health Equip. & Supply Co.
 Solo Motors, Inc.
 Tree-Ject Co.
 The Vandermolen Co.

FOGGERS

Curtis Dyna Products Corp.
 Echo Chain Saw Div., Kioritz Corp.
 of America
 London Fog Company
 Leigh Products, Inc.
 Public Health Equip. & Supply Co.
 The Vandermolen Co.
 Village Blacksmith

FORK LIFTS

Allis-Chalmers Mfg. Co.
 Badger-Dynamics, Inc.
 Brouwer Turf Equip. Ltd.
 Clark Equipment Co.
 International Harvester Co.
 Massey-Ferguson, Inc.
 (Industrial Products)
 Otis Materials Handling
 TCI, Inc.
 Waldon, Inc.

WEEDS TREES and TURF

For More Details Circle (144) on Reply Card

FORK LIFT (ATTACHMENT)

Century Engineering Corp.
Harvestall Industries, Inc.
Waldon, Inc.

FUMIGANT APPLICATORS

John Blue Co., Inc.
Red Ewald, Inc.

GENERATORS

Conaway, Inc.
Friend Mfg. Corp.
Howard Rotavator Co., Inc.
Hydro Turf
McCulloch Corporation
Olathe Mfg. Inc.
Onan Div. of Onan Corp.
Solo Motors, Inc.
Universal Motor Div. Medalist Ind.

GOGGLES

(Also see Masks, Face)

American Optical Corp.
Martindale Electric Co.

GOLF ACCESSORIES

Container Development Corp.
Coursigns Inc.
Fore-Par, Inc.
Ginther Equipment Corp.
Lakeshore Equipment & Supply Co.
Par Aide Products Co.
Plasti-Chain Corporation
Standard Mfg. Co.

GOLF CARS

(Also See Turf Vehicles)

Club Car, Inc.
Cushman, OMC-Lincoln
E-Z Go Car, Div. of Textron
G. E. M. Products, Inc.
Harley-Davidson Motor Co., Inc.
Otis Elevator Company, Special Vehicle Div.
Pargo, Inc.
Westinghouse, Electric Vehicles

GRADERS

Allis-Chalmers Mfg. Co.
E. L. Caldwell & Sons, Inc.
Deere & Co.
Engineering Products Co.
Ford Motor Co., Tractor Div.
Simplicity Mfg. Co., Inc.
Wheel-Horse Products, Inc.

GREENHOUSES

Simplex Mfg. Co.

HARD HATS, HELMETS

American Optical Company
Glendale Optical Company
Jomac Products Co. Inc.
Safeline Products
Welsh Mfg. Co.
Wilson Products Div., Ray-O-Vac Co.

HARROW, SPIKE-TOOTHED

Allis-Chalmers Mfg. Co.
Brillion Iron Works, Inc.
The Broyhill Co.
Clark Equipment Co.
Deere & Co.
Engineering Products Co.
Finn Equipment Co.
Ford Motor Co., Tractor Div.
Fuerst Brothers
International Harvester Co.
Lely Corporation
Simplicity Mfg. Co., Inc.

Vicon Farm Machinery, Inc.
Wheel Horse Products, Inc.

HARROW, SPRING-TOOTHED

Allis-Chalmers
Brillion Iron Works, Inc.
The Broyhill Co.
Deere & Co.
Engineering Products Co.
Finn Equipment Co.
Ford Motor Co., Tractor Div.
Fuerst Brothers, Inc.
International Harvester Co.
Lely Corporation
Towner Mfg. Co.
Vicon Farm Mach. Co.
Wheel-Horse Products, Inc.

HEARING PROTECTORS

American Optical Corp.
Safeline Products

HEATERS

Century Engineering Corp.

HOISTS

Adventure Line Mfg.
Blue Bird International, Inc.
Dico Co., Inc.
Energy Mfg. Co.
Hoffco, Inc.
Ideal Crane Div., Bert Parkhurst
Lakes Supply Co., Inc.
Fred A. Lewis Company

HOSE

Aeroquip Corporation
American Hose & Reel Co.
Asplundh Tree Expert Co.
Black & Decker
Brighton By-Products
The Broyhill Co.
Century Engineering Corp.
Contree Sales, Inc.
Friend Manufacturing Corp.
Hydro-Turf
Larson Machine, Inc.
F. E. Myers & Bro. Co.
Robco, Inc.
Swan Hose Div., Amerace Corp.

HOSE, SPRAY, IRRIGATION

Aeroquip Corporation
American Hose & Reel Co.
Hydro-Turf
Public Health Equip. & Supply Co.
Robco, Inc.
Swan Hose Div., Amerace Corp.

HYDRAULIC & AIR POWERED TOOLS

Fairmont Hydraulics
Stanley Hydraulic Tools Div., The Stanley Works

HYDRAULIC LIFTS

G & H Products, Inc.
Howard Rotavator Co., Inc.
Magline, Inc.
Pitman Mfg. Co.
Selma Trailer and Mfg. Co.

HYDRAULIC SEEDING & MULCHING MACHINES

Bowie Industries, Inc.
Finn Equipment Co.
Hydro Turf
Reinco, Inc.
Spray Baby, Inc.
The Toro Company

INCINERATORS

DriAll, Inc.

**rated #1
for overall
performance**



**.. MAN
MADE**

Adelphi
KENTUCKY BLUEGRASS
(U.S. Plant Patent No. 3150)

**NOW SETS U.S.
GOVERNMENT*
STANDARDS
FOR THE DARK
GREEN COLOR OF
ALL FUTURE
BLUEGRASSES!**

*Source: Plant Variety Protection Office,
U.S. Dept. of Agriculture

In 10 years of man-controlled parentage breeding and over 7 years of university and field testing, "Adelphi" has earned a top rating for overall performance.

"Adelphi" offers the features most wanted in turf. Professionals and home gardeners, alike, are making it the most widely accepted and universally acclaimed bluegrass in 30 years.

For good looks throughout the entire growing season...excellent density...good disease resistance and tolerance to moderately close mowing, it's...MAN-MADE "Adelphi"... A FIRST IN TURF!

For Details Contact:

J & L ADIKES, Inc.
Jamaica, N. Y. 11423

JONATHAN GREEN & SONS
Kearny, N. J. 07032

NORTHRUP, KING & CO.
Minneapolis, Minn. 55413

VAUGHAN'S SEED CO.
Bound Brook, N.J. 08805
Downers Grove, Ill. 60515

For More Details Circle (113) on Reply Card

INJECTION EQUIPMENT

Agresults, Inc.
Rue R. Elston Co., Inc.
Walsh Mfg. Co.

INSECT KILLER

Vandermolen Corp.
Village Blacksmith

IRRIGATION, INJECTION EQUIPMENT

Agresults, Inc.
Andrasko Engineering Co.
Inject-O-Meter Mfg. Co., Inc.
Smith Precision Products Co.

IRRIGATION CONTROLLER/PROGRAMMERS

Aqua-Dial
Buckner/Johns Manville
Griswold Controls
Hays Mfg. Div., Zurn Industries
Imperial Underground Sprinkler
Lumenite Electronic Co.
Melnor, Turf Irrigation Div.
Moody Sprinkler Co., Inc.
L. R. Nelson Mfg. Co., Inc.
RainBird Sprinkler Mfg. Corp.
Rain-O-Mat Sprinklers, Inc.
Tork Time Controls, Inc.
The Toro Company
Toro Irrigation Div.
Weather-Matic Div., Telsco
Industries
Wet Mfg. Co.

IRRIGATION, COMPONENTS

Aqua-Mech
Buckner/Johns Manville
Champion Brass Mfg.
Greenlawn Sprinkler Co.
Griswold Controls
Hays Mfg., Div. Zurn Industries
King Bros. Industries
Lumenite Electric Co.
Melnor, Turf Irrigation Div.
Moody Sprinkler Co., Inc.
L. R. Nelson Mfg. Co., Inc.
RainBird Sprinkler Mfg. Corp.
Rain Jet Corporation
Toro Irrigation Div.
Weather-matic Div., Telsco
Industries
Wet Mfg. Co., Inc.

IRRIGATION FITTINGS (See Pipe Fittings)

IRRIGATION, PIPE PULLER

Greenlawn Sprinkler Co.
Jacobsen Manufacturing Co.

IRRIGATION PIPE, RISERS

Alcoa Aluminum
Amoco Chemicals Corp.
Buckner/Johns Manville
Cast Iron Pipe Res. Assoc.
Certain-Teed/Daymond Co.
Certain-Teed Products Corp.
Cresline Plastic Pipe Co., Inc.
Flintkote Co., The Pipe Products
Div.
Greenlawn Sprinkler Co.
King Bros. Industries
Melnor, Turf Irrigation Div.
RainBird Sprinkler Mfg. Corp.
Rain Jet Corporation
Ridge Plastics Co.
Sprinkler Irrigation Supply Co.
Toro Irrigation Division

IRRIGATION, PUMPING STATIONS, COMPLETE

Irrigation Supply Co., Inc.
Venable Sprinkler Sales, Inc.

IRRIGATION SPRINKLERS, ABOVE GROUND

Aqua-Dial
Boss Irrigation
Champion Brass Mfg.
Greenlawn Sprinkler Co.
Hydro-Turf
F. D. Kees Mfg. Co.
Melnor, Turf Irrigation Div.
L. R. Nelson Corporation
Travelrain Power Sprinkler Co.
Weather-matic Div., Telsco Ind.

IRRIGATION SPRINKLERS, IMPACT

Buckner/Johns Manville
Hays Mfg. Div., Zurn Industries, Inc.
Moody Sprinkler Co., Inc.
RainBird Sprinkler Mfg. Corp.
Rain-O-Mat Sprinklers, Inc.
Safe-T-Lawn, Inc.
Sprinkler Irrigation Supply Co.
Toro Irrigation Division
Weather-matic Div., Telsco Ind.

IRRIGATION SPRINKLERS, IMPULSE, POP-UP, HEADS

Aqua-Dial
Buckner/Johns Manville
Champion Brass Mfg.
Melnor, Turf Irrigation Div.
Moody Sprinkler Co., Inc.
L. R. Nelson Corporation
RainBird Sprinkler Mfg. Corp.
Rain Jet Corporation
Safe-T-Lawn, Inc.
Sprinkler Irrigation Supply Co.
Thompson Manufacturing
Toro Irrigation Division
Weather-matic Div., Telsco Ind.
Wet Mfg. Co., Inc.

IRRIGATION SPRINKLERS, SHRUB AND BUBBLER

Buckner/Johns Manville
Champion Brass Mfg.
Melnor, Turf Irrigation Div.
Moody Sprinkler Co., Inc.
L. R. Nelson Mfg. Co., Inc.
Perma-Rain Irrigation, Inc.
Rain Bird Sprinkler Mfg. Corp.
Rain-O-Mat Sprinklers, Inc.
Sprinkler Irrigation Supply Co.
Toro Irrigation Division
Weather-matic Div., Telsco Ind.
Wet Mfg. Co., Inc.

IRRIGATION SPRINKLERS, SPRAY, POP-UP, HEADS

Aqua-Dial
Buckner/Johns Manville
Champion Brass Mfg.
Hays Mfg. Div., Zurn Industries, Inc.
Imperial Underground Sprinkler
Melnor, Turf Irrigation Div.
Moody Sprinkler Co., Inc.
L. R. Nelson Corporation
RainBird Sprinkler Mfg. Corp.
Rain Jet Corporation
Safe-T-Lawn, Inc.
Sprinkler Irrigation Supply Co.
Thompson Manufacturing
Toro Irrigation Division
Weather-matic Div., Telsco Ind.
Wet Mfg. Co., Inc.

IRRIGATION SPRINKLERS ROTARY, POP-UP, HEADS

Aqua-Dial
Buckner/Johns Manville
Melnor, Turf Irrigation Div.
Moody Sprinkler Co., Inc.
L. R. Nelson Corporation
RainBird Sprinkler Mfg. Corp.
Rain Jet Corporation
Rain-O-Mat Sprinklers, Inc.
Safe-T-Lawn, Inc.
Sprinkler Irrigation Supply Co.
Thompson Manufacturing
Toro Irrigation Division
Weather-matic Div., Telsco Ind.

IRRIGATION SPRINKLERS, STATIONARY

Aqua-Dial
Buckner/Johns Manville
Champion Brass Mfg.
Melnor, Turf Irrigation Div.
Moody Sprinkler Co., Inc.
RainBird Sprinkler Mfg. Corp.
Rain Jet Corporation
Rain-O-Mat Sprinklers, Inc.
Sprinkler Irrigation Supply Co.
Toro Irrigation Division
Weather-matic Div., Telsco Ind.

IRRIGATION SPRINKLERS, VALVE IN HEAD

Buckner/Johns Manville
RainBird Sprinkler Mfg. Corp.
Safe-T-Lawn, Inc.

IRRIGATION SYSTEMS, COMPLETE

Buckner/Johns Manville
Greenlawn Sprinkler Co.
Moody Sprinkler Co., Inc.
L. R. Nelson Mfg. Co., Inc.
RainBird Sprinkler Mfg. Corp.
Rain Jet Corporation
Sprinkler Irrigation Supply Co.
Toro Irrigation Division
Weather-matic Div., Telsco Ind.
Wet Mfg. Co., Inc.

IRRIGATION, SWITCHES

Buckner/Johns Manville
L. R. Nelson Mfg. Co., Inc.
RainBird Sprinkler Mfg. Corp.

IRRIGATION, SAND SEPARATORS

Laval Separator Corp.
Moody Sprinkler Co., Inc.
Perma-Rain Irrigation, Inc.
Rain-O-Mat Sprinklers, Inc.

IRRIGATION, MISCELLANEOUS ACCESSORIES

Buckner/Johns Manville
Certain-Teed Products Corp.
Champion Brass Mfg.
Cresline Plastic Pipe Co., Inc.
Greenlawn Sprinkler Co.
Irrigation Supply Co., Inc.
King Bros. Industries
Melnor, Turf Irrigation Div.
Moody Sprinkler Co., Inc.
L. R. Nelson Mfg. Co., Inc.
RainBird Sprinkler Mfg. Corp.
Rain Jet Corporation
Rain-O-Mat Sprinklers, Inc.
Safe-T-Lawn, Inc.
Thompson Manufacturing
Toro Irrigation Division
Weather-matic Div., Telsco Ind.

IRRIGATION VALVES, AUTOMATIC

Aqua-Dial
Buckner/Johns Manville

Champion Brass Mfg.
Greenlawn Sprinkler Co.
W. L. Hamilton Co.
Hays Mfg. Div., Zurn Industries
Melnor, Turf Irrigation Div.
Moody Sprinkler Co., Inc.
L. R. Nelson Mfg. Co., Inc.
RainBird Sprinkler Mfg. Corp.
Rain-O-Mat Sprinklers, Inc.
Toro Irrigation Division
Weather-matic Div., Telsco Ind.

IRRIGATION VALVES, FLOW CONTROL

Griswold Controls
Moody Sprinkler Co., Inc.
Toro Irrigation Division

IRRIGATION VALVES, MANUAL

Greenlawn Sprinkler Co.

**IRRIGATION VALVES,
PRESSURE ACTIVATED**

Griswold Controls
W. L. Hamilton Co.
Moody Sprinkler Co., Inc.
RainBird Sprinkler Mfg. Corp.
Toro Irrigation Division

**IRRIGATION, QUICK
COUPLING VALVES**

Buckner/Johns Manville
Melnor, Turf Irrigation Div.
Moody Sprinkler Co., Inc.
L. R. Nelson Mfg. Co., Inc.
RainBird Sprinkler Mfg. Corp.
Rain-O-Mat Sprinklers, Inc.
Sprinkler Irrigation Supply Co.
Toro Irrigation Division
Weather-matic Div., Telsco Ind.
H. N. Webster Mfg.

IRRIGATION VALVES, SOLENOID

Griswold Controls
Hays Mfg. Div., Zurn Industries, Inc.
Melnor, Turf Irrigation Div.
Moody Sprinkler Co., Inc.
RainBird Sprinkler Mfg. Corp.
Toro Irrigation Division

KNIVES, INJECTOR

Contree Sales, Inc.

LANDSCAPING, STUDY COURSES

Lifetime Career Schools

LEAF BLOWERS

Billy Goat Industries, Inc.
Finn Equipment Co.
Gravelly Corp., Div. Clarke-Gravelly Corp.
Mid-State Metal Casters & Mfg. Co.
F. E. Myers & Bro. Co.
Papec Machine Co.
Parker Sweeper Co.
Solo Motors, Inc.
The Vandermolen Co.

LEVELERS

(Also See Blades, Dozer Scrapers)

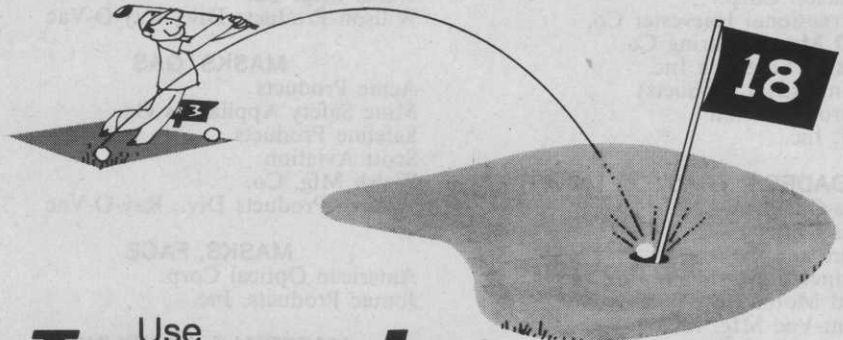
Arps Corporation
Austin Products, Inc. •
Brillion Iron Works, Inc.
Deere & Co.
DriAll Drier's Inc.
Eversman Mfg. Co.
FMC Corp., Side-Winder
International Harvester Co.

LITTER RECEPTACLES

Bemis Mfg. Co.
Friend Mfg. Corp.

Control your fungi problems

FROM TEE TO GREEN



Use **Terrazole**[®]

To Fight Cottony Blight, Grease Spot, Damping-Off

Terrazole soil fungicide is your best weapon against Pythium fungi—the cause of grease spot, damping-off and cottony blight in your turf.

With a case of Terrazole in your storage shed, you're set to act fast at the first sign of these turf diseases. Terrazole goes to work quickly and provides effective control of the problems caused by both Pythium and Phytophthora. Repeating at 5 to 10-day intervals provides preventive control. Keep your best weapon against Pythium on hand. Keep your greens green, your golfers happy.

Use **Terraclor**[®]

To Control Brown Patch

Terraclor soil fungicide is the answer to Rhizoctonia control—the fungus that contributes to the formation of Brown Patch in Southern turf grasses.

Terraclor is easy to apply in liquid or dry granular form. Usually one application at the first sign of disease is all it takes.

Be sure you have Terraclor on hand. It's good assurance for healthy fairways and greens.

Write for complete information.

Mr. D. H. Sparks, Agricultural Division OLIN, **The rare bird in the business**
P. O. Box 991, Little Rock, Arkansas 72203

Please send me more information on
Terrazole/Terraclor for a healthy turf.



Name _____

Address _____

City _____

State _____ Zip _____

LOADERS, BOOM

Century Engineering Corp.
Deere & Co.
Dico Co., Inc.
Howard Rotavator Co., Inc.
Pitman Mfg. Co.
Waldon, Inc.

LOADER, SKID STEER

Clark Equipment Co.
Davis Mfg.
Deere and Co.
Erickson Corp.
International Harvester Co.
K-D Manufacturing Co.
Massey Ferguson Inc.
(Industrial Products)
Melroe Division
TCI, Inc.

LOADERS, TRACTOR MOUNTED

Allis-Chalmers
Arps Corp.
Deere and Co.
Engineering Products Co.
Ford Motor Co., Tractor Div.
Giant-Vac Mfg. Inc.
International Harvester Co.
Johnson Hydraulic Equip. Co.,
Div. Arps Corp.
Massey-Ferguson, Inc.
Melroe Mfg. Co.
Schwartz Mfg. Co.
The Sun-Mastr Corp.
Vermeer Manufacturing Co.

LOG SPLITTERS

Lupton Tree Service
Olathe Mfg., Inc.

Piqua Engineering, Inc.
Vermeer Mfg. Co.

MARKERS, LINE

Fox Valley Marking Systems

MASKS, DUST

Acme Products
American Optical Co.
Friend Mfg. Corp.
Martindale Electric Co.
Mine Safety Appliances Co.
Welsh Mfg. Co.
Willson Products Div., Ray-O-Vac

MASKS, GAS

Acme Products
Mine Safety Appliances Co.
Safeline Products
Scott Aviation
Welsh Mfg. Co.
Willson Products Div., Ray-O-Vac

MASKS, FACE

American Optical Corp.
Jomac Products, Inc.

MATERIALS, HANDLING

B.A.G. Corp.
Bemis Mfg. Co.

MEASURING WHEEL

Gandy Co.

MISTBLOWERS, BACKPACK

Buffalo Turbine Ag. Equip. Co.
Curtis Dyna Products Corporation
Echo Chain Saw Div., Kioritz Corp.
of America

Friends Mfg. Corp.
H. D. Hudson Mfg. Co.
Robco, Inc.
Solo Motors, Inc.
Stihl American, Inc.
Tradewinds, Inc.
Vandermolen Corp.

MISTBLOWERS, ELECTRIC

Root-Lowell Corp.

MISTBLOWERS, SELF-PROPELLED

Century Engineering Corp.
Solo Motors, Inc.
Tradewinds, Inc.

MISTBLOWERS, TRUCK-MOUNTED

The Broyhill Co.
Buffalo Turbine Ag. Equip. Co.
FMC Corp., Ag. Machinery Div.
Finn Equipment Co.
F. E. Myers & Bro. Co.
Solo Motors, Inc.
Vandermolen Corp.

MISTBLOWERS, NOZZLE PARTS

The Broyhill Co.
Buffalo Turbine Equipment Co.
Century Engineering Corp.
Delevan Mfg. Co.
Echo Chain Saw Div., Kioritz Corp.
of America
FMC Corp., Ag. Machinery Div.
H. D. Hudson Mfg. Co.
F. E. Myers & Bro. Co.
Solo Motors, Inc.
Spraying Systems Co.

MOISTURE METERS

AgTronics Mfg. Co.
Howard S. Crane, Inc.
Harbor Industries, Inc.
Irrrometer Company
JLM Products & Design
Soilmoisture Equipment Corp.
Turf Service Laboratory, Inc.

MOWERS, FLAIL

BMB Company
Brillion Iron Works, Inc.
E. L. Caldwell & Sons, Inc.
Deere and Co.
Excel Industries, Inc.
FMC Corp., Ag. Machinery Div.
FMC Side-Winder
Ford Motor Co., Tractor Div.
Friend Mfg. Corp.
Gravely Corp., Div. Clarke-Gravely
Corp.
International Harvester Co.
Kinco Mfg.
Lakes Supply Co., Inc.
Massey-Ferguson, Inc.
Mathews Company
Mott Corporation
Slope Tractor, Inc.
Sun-Master, Corp.
Terrain King Corp.

MOWERS, GREENS

Cooper Mfg. Co.
Hahn, Inc.
Jacobsen Mfg. Co.
National Mower Co.
The Toro Company

MOWERS, REEL

Bunton Company
Cooper Mfg. Co.
Engineering Products Co.
Friend Mfg. Corp.
Hahn, Inc.

360 Degrees of Quality

Covering your entire irrigation needs.

Systems:

White Turf designs maximum performance irrigation systems featuring durability and low maintenance.

Installation:

Special techniques and equipment enable White Turf to install your system with a minimum of turf damage.

Distribution:

Efficient handling methods of quality equipment provides you with the best irrigation service available.



White Turf Engineering

5 SUMMER DRIVE, WINCHENDON, MASSACHUSETTS 01475 PHONE 617-297-0941

Jacobsen Mfg. Co.
Locke Mfg. Div. Stellar Lawn Care
McDonough Power Equipment, Inc.
National Mower Co.
Roseman Mower Corp.
Simplicity Mfg. Co.
The Sun-Master Corp.
The Toro Company
Year-A-Round Cab Corp., Jari Div.

MOWERS, ROTARY

AMF Western Tool Division
Allis-Chalmers
Ariens Company
Austin Products, Inc.
Avco Ezee Flow Div.
BMB Company
The Black & Decker Mfg. Co.
Brillion Iron Works, Inc.
Bachtold Bros.
Bunton Co.
E. L. Caldwell & Sons, Inc.
J. I. Case Co., Outdoor Power
Equip. Div.
Conaway, Inc.
Deere and Co.
Economy Tractor
Engineering Products Co.
Excel Industries, Inc.
FMC Corp., Ag. Machinery Div.
FMC Corp., Outdoor Power Equip.
Division
FMC Corp., Side-Winder
Flymo Division, Keltec, Inc.
Ford Motor Co., Tractor Div.
Friend Mfg. Corp.
Goodall Div.
Gravelly Corp., Div. Clarke-Gravelly
Hesston Corporation, Ind. Div.
Hydro Turf
International Harvester Co.
Jacobsen Mfg. Co.
Lawn-Boy, OMC-Lincoln
Lehara Equipment Co., Inc.
Locke Mfg. Div. Stellar Lawn Care
MTD Products, Inc.
Massey-Ferguson, Inc.
McDonough Power Equipment, Inc.
Roof Mfg.
Ryan, OMC-Lincoln
M. J. Scott Co.
Simplicity Mfg. Co.
Slope Tractor, Inc.
Solo Motors, Inc.
Speedex Tractor Co.
The Sun-Master Corp.
Terrain King Corp.
The Toro Company
Triumph Machinery Co.
Vicon Farm Machinery, Inc.
Wheel-Horse Products
Wisconsin Marine, Inc.
Wood Brothers, Inc.
Yazoo Mfg. Co.
Year-A-Round Cab Corp., Jari Div.

MOWERS, SICKLE BAR

Allis-Chalmers
BMB Co., Inc.
Deere and Co.
Ford Tractor Operations, North
America
Friend Mfg. Corp.
International Harvester Co.
Jacobsen Mfg. Co.
Kinco Mfg.
Massey-Ferguson, Inc.
Simplicity Mfg. Co.
Slope Tractor, Inc.
Solo Motors, Inc.
Thomas Equipment Ltd.
Triumph Machinery Co.

Wheel Horse Products
Year-A-Round Cab Corp. (Jari Div.)

MOWERS, VERTICAL (Also See Thatcher)

Artic Mizer Manufacturers, Inc.
BlueBird International, Inc.
Deere and Co.
E-Z Rake, Inc.
Giant-Vac Mfg., Inc.
Hahn, Inc.
International Harvester Co.
Jacobsen Mfg. Co.
F. D. Kees Mfg. Co.
Kinco Mfg.
Parker Sweeper Co.
Ryan, OMC-Lincoln
Terrain King Corp.
Triumph Machinery Co.

MOWERS, REPLACEMENT PARTS

Allis-Chalmers
Ariens Company
Austin Products, Inc.
Deere and Co.
FMC Corp., Side-Winder
Flymo Div., Keltec Inc.
Ford Motor Co., Tractor Div.
Goodall Div.
Hesston Corp.
International Harvester Co.
Jacobsen Mfg. Co.
Lakeshore Equipment & Supply Co.
Locke Mfg. Co., Inc.
Massey-Ferguson
Roof Manufacturing Co.
Ryan, OMC-Lincoln
Slope Tractor, Inc.
The Sun-Master Corp.
Terrain King Corp.
The Toro Company
Wheel Horse Products
Wood Brothers, Inc.
Yazoo Mfg. Co., Inc.
Year-A-Round Cab Corp. (Jari Div.)

MULCH BLOWERS

Bowie Industries, Inc.
Finn Equipment Co.
Reinco

NOZZLES (See Spray Nozzles)

OIL STORAGE

Contree Sales, Inc.

PAINT, MARKING

Fox Valley Marking Systems

PARK EQUIPMENT

Game Time, Inc.

PIPE

(See Irrigation Pipe)

Alcoa Aluminum Co. of America
Amoco Chemicals Corp.
Cast Iron Pipe Res. Assoc.
Cresline Plastic Pipe Co., Inc.
The Flintkote Co., Pipe
Products Div.
Hydro-Turf
Ridge Plastics Co.

PIPE FITTINGS

Amoco Chemicals Corp.
Certain-Teed Products Corp.
Cresline Plastic Pipe Co., Inc.
Melnor Ind., Turf Div.
L. R. Nelson Corp.
Plastiline, Inc.
R & G Sloane Mfg. Co.

PLAYGROUND EQUIPMENT
Game Time, Inc.

PLOWS, VIBRATORY
Charles Machine Works, Inc.
Jacobsen Manufacturing Co.
Vermeer Mfg. Co.

POST HOLE DIGGER
Austin Products, Inc.
Hoffco, Inc.
Fred A. Lewis Company
Solo Motors, Inc.
Stone Construction Equip., Inc.
Village Blacksmith
Vogel Tool & Die Corp.

PROPORTIONING SYSTEMS
Contree Sales, Inc.
Vineland Laboratories, Inc.

PROTECTIVE CLOTHING
American Optical Co.
Friend Mfg. Corp.
Jomac Products, Inc.
Mine Safety Appliances Co.

PRUNERS
American Arborist Supplies
Asplundh Chipper Co.
Bartlett Mfg. Co.
Corona Clipper Co.
Fairmont Hydraulics
Fanno Saw Works
Friend Mfg. Co.
Jameson Corporation
Karl Kuemmerling, Inc.
Limb-Lopper Co., Inc.
Pitman Mfg. Co.
H. K. Porter, Inc.
Rowco Mfg. Co., Inc.
Safety Test & Equipment Co.
Seymour Smith & Son, Inc.
Stanley Hydraulic Tools, Div.
The Stanley Works
Stihl American, Inc.
Village Blacksmith



Agway bags it!

NITROFORM*
organic nitrogen



The long-lasting, slow-release organic nitrogen that keeps feeding turf for months. Try it.

Turf and Horticultural Products, Synthetics Dept.
Wilmington, Delaware 19899

* Registered trademark of Hercules Incorporated. STH74-2

For More Details Circle (140) on Reply Card.

PUMPS

(Also See Sprayers, Complete Power Unit)

Ace Pump Corp.
Aurora Pump
Berkley Pump Company
John Blue Co.
Bowie Industries, Inc.
The Broyhill Co.
Century Engineering Corp.
Contree Sales, Inc.
Delavan Manufacturing Corp.
Energy Mfg. Co.
FMC Corp., Ag. Machinery Div.
Friend Manufacturing Corp.
H. D. Hudson Mfg. Co.
Hydraulic Products Co., Inc.
Hydro Turf
Hypro, Inc.
ITT Marlow
Larson Machine, Inc.
F. E. Myers & Bro. Co.
Oberdorfer Pump Div.
Robco, Inc.
Root-Lowell Corp.
Solo Motors, Inc.
Universal Motor Co.
Venable Sprinkler Sales, Inc.
Viking Pump Company

PUMPS, CENTRIFUGAL

Ace Pump Corp.
Aurora Pump
Berkley Pump Company
L. L. Larson Machine, Inc.
Oberdorfer Foundries Inc.,
Agri. Pump Div.
Universal Motor Div., Medalist Ind.

PUMPS, DIAPHRAGM

Ace Pump Corp.

PUMPS, PISTON

L. L. Larson Machine, Inc.
Robco, Inc.

PUMPS, ROLLER

L. L. Larson Machine, Inc.

PUMPS, SUBMERSIBLE

Hydraulic Products Co., Inc.
ITT Marlow
Stanley Hydraulic Tools, Div.
The Stanley Works

PUMPS, TURBINE

Aurora Pump
Hydraulic Products Co., Inc.

RAKES, LANDSCAPING

Arps Corporation
Austin Products, Inc.
Brillion Iron Works, Inc.
Deere and Co.
E-Z Rake, Inc.
Ford Motor Co.
International Harvester Co.
Roseman Mower Corporation
Triumph Machinery Co.
York Modern Corp.

RAKES, ALL PURPOSE

Arps Corp.
Asplundh Chipper Co.
Austin Products, Inc.
Bartlett Mfg. Co.
BlueBird International, Inc.
Brillion Iron Works, Inc.
Coursigns, Inc.
Deere and Co.
Ford Motor Co., Tractor Div.
International Harvester Co.
F. D. Kees Mfg. Co.
Lely Corp.
Roseman Mower Co.
Ryan, OMC-Lincoln
Skaggs Turf Equipment Co.
Smithco, Inc.
The Toro Company
Vicon Farm Machinery, Inc.
Year-A-Round Cab Corp., Jari Div.
York Modern Corp.

REELS, HOSE

American Hose & Reel Co.
FMC Corp., Ag. Machinery Div.
Friend Mfg. Corp.
Clifford B. Hannay & Son, Inc.
H. D. Hudson Mfg. Co.
F. E. Myers & Bro. Co.

RESPIRATORS

Acme Products
American Optical Co.
Friend Mfg. Co.
Glendale Optical Co., Inc.
Martindale Electric Co.
Mine Safety Appliances Co.
Safeline Products
Scott Aviation
The Vandermolen Co.
Welsh Mfg. Co.
Willson Products Div., Ray-O-Vac

ROCK PICKERS

(Also See Stone Pickers)

Armor Metal Products
William Bergman Company
Bridgeport Imple. Works, Inc.

ROLLERS, TURF

Brillion Iron Works, Inc.
Erie Go Mfg., Inc.
Ford Motor Co., Tractor Div.
Hadfield Sod Roller Co.
International Harvester Co.
Lakes Supply Co., Inc.
Rosco Manufacturing Co.
Ryan, OMC-Lincoln
Simplicity Mfg. Co.
Wheel-Horse Products

ROOT-FEEDING RODS

Ross Daniels, Inc.
H. D. Hudson Mfg. Co.
Hydroponic Chemical Co., Inc.

ROOT PRUNERS

Schutt's Equipment Co.

SAFETY BELTS AND SADDLES, TREE CLIMBERS

American Arborist Supplies
Asplundh Chipper Co.
Bartlett Mfg. Co.
Karl Kuemmerling, Inc.
Mine Safety Appliances Co.
Product Development International

SAFETY EQUIPMENT

American Optical Co.
Asplundh Chipper Co.
Bartlett Mfg. Co.
FMC Corp., Ag. Machinery Div.
Friend Mfg. Corp.
General Scientific Equip. Co.
Glendale Optical Co.
Jomac Products, Inc.
Karl Kuemmerling, Inc.
Martindale Electric Co.
Mine Safety Appliances Co.
Product Development International
Safeline Products
Scott Aviation
The Vandermolen Co.
Welsh Mfg. Co.
Willson Products Div., Ray-O-Vac

SAWS, MANUAL

Bartlett Mfg. Co.
Corona Clipper Co.
The Fanno Saw Works
Friend Mfg. Corp.
Karl Kuemmerling, Inc.
Seymour Smith & Son, Inc.

SAWS, CHAIN, ELECTRIC

Beard-Poulan Div., Emerson
Electric Co.
Campbell-Hausfeld Co.
Conaway, Inc.
DESA Industries, Inc.
Stihl American, Inc.
Village Blacksmith

SAWS, CHAIN, GASOLINE

Allis-Chalmers Corp., Outdoor and
Leisure Products
Beard-Poulan Div., Emerson
Electric Co.
Campbell-Hausfeld Co.
Conaway, Inc.
Deere & Co.
DESA Industries, Inc.
Echo Chain Saw Div., Kioritz Corp.
of America
Ford Tractor Operations,
North America
Friend Mfg. Corp.
Hoffco, Inc.
Homelite
Husqvarna, Inc.
Jobu Chain Saws
Landcaster Pump & Mfg. Co., Inc.
Lombard Power Equipment
McCulloch Corp.
Omark Industries, Inc., Oregon
Saw Chain Div.
Partner Industries of America
Pioneer, OMC-Lincoln
Quadra Mfg. Ltd.
Roper Corporation
Skil Corporation
Solo Motors, Inc.



Lakeshore bags it!

NITROFORM*
organic nitrogen



The slow-release nitrogen that helps turf keep its good looks without repeated fertilizing. Use it to save labor.

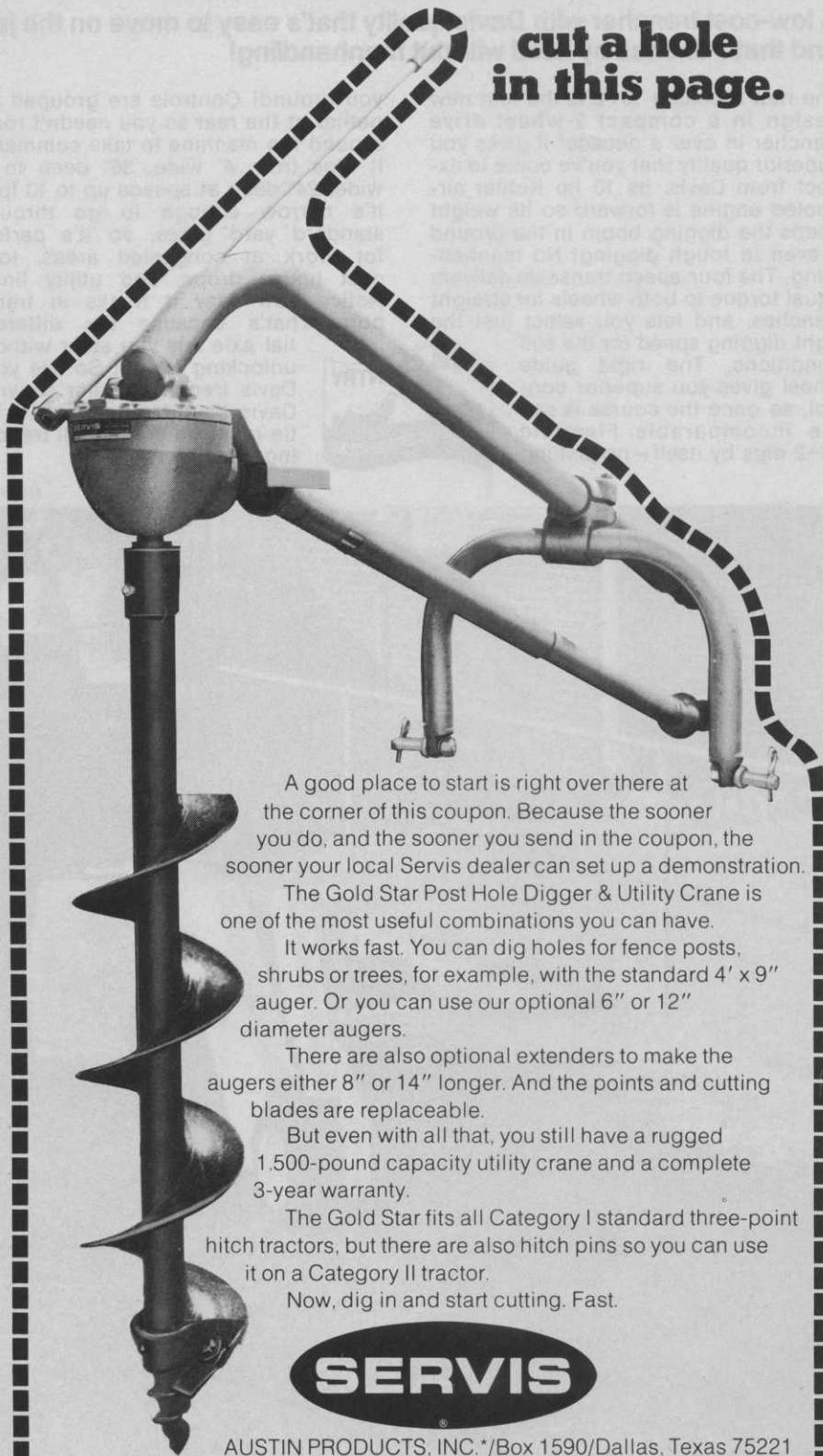
Turf and Horticultural Products, Synthetics Dept.
Wilmington, Delaware 19899

Registered trademark of Hercules Incorporated. STH74-9

For More Details Circle (141) on Reply Card.

**To find out how good
our Gold Star Digger really is,**

**cut a hole
in this page.**



A good place to start is right over there at the corner of this coupon. Because the sooner you do, and the sooner you send in the coupon, the sooner your local Servis dealer can set up a demonstration.

The Gold Star Post Hole Digger & Utility Crane is one of the most useful combinations you can have.

It works fast. You can dig holes for fence posts, shrubs or trees, for example, with the standard 4' x 9" auger. Or you can use our optional 6" or 12" diameter augers.

There are also optional extenders to make the augers either 8" or 14" longer. And the points and cutting blades are replaceable.

But even with all that, you still have a rugged 1,500-pound capacity utility crane and a complete 3-year warranty.

The Gold Star fits all Category I standard three-point hitch tractors, but there are also hitch pins so you can use it on a Category II tractor.

Now, dig in and start cutting. Fast.



AUSTIN PRODUCTS, INC.*/Box 1590/Dallas, Texas 75221

Name _____ Student? _____
 Address _____
 City _____ State _____ Zip _____

*Formerly Servis Equipment Company

WT-9

Stihl American, Inc.
Waco Industries, Inc.

SAWS, CHAIN, HYDRAULIC
Fairmont Hydraulics
Friend Mfg. Corp.
Limb Lopper Co., Inc.
Stanley Hydraulic Tools, Div. The Stanley Works

SAWS, CHAIN, PNEUMATIC
DESA Industries, Inc.
Limb-Lopper Co., Inc.

SAWS, CIRCULAR, GASOLINE
Skil Corporation
Stihl American, Inc.

SAWS, CIRCULAR, HYDRAULIC
Fairmont Hydraulics
Limb Lopper Co., Inc.
Stanley Hydraulic Tools, Div. The Stanley Works

SAWS, CIRCULAR, PNEUMATIC
Limb Lopper Co., Inc.
Stanley Hydraulic Tools, Div. The Stanley Works

SAWS, CIRCULAR, ELECTRIC
Allis-Chalmers Corp., Outdoor and Leisure Products
The Black & Decker Mfg. Co.
Friend Mfg. Corp.
Skil Corporation

SAWS, CHAIN, PARTS
Beaird-Poulan Div., Emerson Electric Co.
Campbell-Hausfeld Co.
Grandberg Industries
McCulloch Corporation
Omark Industries, Inc., Oregon Saw Chain Div.
Pioneer, OMC-Lincoln
Sabre Saw Chain
Skil Corporation
Stihl American, Inc.
Waco Industries, Inc.

SAWS, EARTH
Charles Machine Works, Inc.

SCAFFOLDS
Up-Right Scaffolds

SCABBARDS, SAW
Bartlett Mfg. Company
Tallman Equip. Co., Inc.
Veri Products

SCRAPERS
Austin Products, Inc.
BMB Company
Deere & Co.
Eversman Mfg. Co.
International Harvester Co.
Massey-Ferguson, Inc. (Industrial Products)

SCREENERS, SOIL
Lindig Mfg. Corp.
Royer Foundry & Machine Co.

SCYTHES
Echo Chain Saw Div., Kioritz Corp. of America
Hoffco, Inc.

SEEDERS, BELT TYPE
FMC Corp., Ag. Machinery Div.

SEEDERS, DISC-TYPE

Brillion Iron Works, Inc.
International Harvester Co.
The Toro Company
Vandermolen Export Co.

SEEDERS, HOPPER-TYPE

Avco Ezee Flow Div.
Brillion Iron Works, Inc.
Cyclone Seeder Co., Inc.
Deere & Co.
Engineering Product Co.
Gandy Co.
Herd Seeder Co., Inc.
Hydro-Turf
International Harvester Co.
Jacobsen Mfg. Co.
Lakes Supply Co., Inc.
L. L. Larson Machine, Inc.
Lawn Medic, Inc.
Lely Corporation
Parker Sweeper Co.
Vandermolen Corp.

SEEDERS, HYDRAULIC

Bowie Industries
Finn Equipment Co.
Hydro Turf
Reinco, Inc.
Spray Baby
The Toro Company

SEEDERS, MOUNTED

Garber Seeders, Inc.

SEEDERS, PULL-TYPE

Garber Seeders, Inc.

SEEDERS, SOD

Brillion Iron Works, Inc.
Cyclone Seeder Co., Inc.

SHARPENER, CHAIN SAW

Foley Mfg. Co.
Granberg Industries

SHARPENER, MOWERS & CUTTERS

Foley Mfg. Co.
Travelrain Power Sprinkler Co.

SHEARS

Bartlett Mfg. Co.
Black & Decker
Corona Clipper Co.
Friend Mfg. Co.
Melnor Industries, Inc.
H. K. Porter, Inc.

Seymour Smith & Son, Inc.
Tallman Equipment Co., Inc.

SHREDDERS (Also See Chippers)

Billy Goat
E. L. Caldwell & Sons, Inc.
Deere & Co.
Engineering Products Co.
FMC Corp., Outdoor Power
Equip. Div.
Ford Motor Co., Tractor Div.
F. D. Kees Mfg. Co.
Kemp Shredder Co.
Lindig Mfg. Co.
MTD Products, Inc.
Roto-Hoe Co.
Royer Foundry & Machine Co.
W-W Grinder

SNOW THROWER

Allis-Chalmers Corp., Outdoor and
Leisure Products
J. I. Case Co., Outdoor Power
Equip. Div.
Deere & Co.
FMC Corp., Outdoor Power
Equip. Div.
Ferrari Tractors
Gravelly Corp., Div. Clarke-Gravelly
Hesston Corporation
International Harvester Co.,
Consumer Products
Jacobsen Mfg. Co.
Lakes Supply Co., Inc.
Massey-Ferguson, Inc.
Maxey Mfg. Co., Inc.
Solo Motors, Inc.
The Toro Company
Wheel-Horse Products
Wisconsin Marine, Inc.
Yardman, The Leisure Group, Inc.

SOD CUTTERS

Beck Mfg. Co.
Big Brute Turf Cut
Bowie Industries, Inc.
Brouwer Turf Equipment, Ltd.
Jacobsen Mfg. Co.
Princeton Mfg. Co.
Ryan, OMC-Lincoln

SOD HARVESTERS

Beck Mfg. Company
Brouwer Turf Equipment Ltd.
Nunes Mfg.
Princeton Mfg. Co.

SOIL TESTERS

Contree Sales, Inc.
Howard S. Crane, Inc.
Harbor Industries, Inc.
Hydroponic Chemical Co., Inc.
Soilmoisture Equipment Corp.
Sudbury Laboratory, Inc.

SPADE, TREE (Also See Tree Movers)

CareTree Systems
Vermeer Mfg. Co.

SPIKERS

Hahn, Inc.
Jacobsen Mfg. Co.
Power Spike Mfg. Co.
Ryan, OMC-Lincoln
Smithco, Inc.

SPRAY BOOMS

Amchem Products, Inc.
The Broyhill Co.
Century Engineering Corp.
Contree Sales, Inc.
Red Ewald, Inc.
FMC Corp., Ag. Machinery Div.
Friend Mfg. Corp.
H. D. Hudson Mfg. Co.
L. L. Larson Machine, Inc.
F. E. Myers & Bro. Co.
Papec Machine Co.
Root-Lowell Corp.
Walsh Manufacturing Co.

SPRAY GUNS

Bar-Way Mfg. Co.
The Broyhill Co.
Century Engineering Corp.
Contree Sales, Inc.
Delavan Mfg. Co.
FMC Corp., Ag. Machinery Div.
Foamspray Chemicals, Inc.
Friend Mfg. Corp.
W. L. Hamilton Co.
H. D. Hudson Mfg. Co.
L. L. Larson Machine, Inc.
Melnor Industries, Inc.
F. E. Myers & Bro. Co.
Root-Lowell Corp.
Spraying Systems Co.
Walsh Manufacturing Co.

SPRAY NOZZLES, COMPLETE

Amchem Products, Inc.
Bete Fog Nozzle, Inc.
The Broyhill Co.

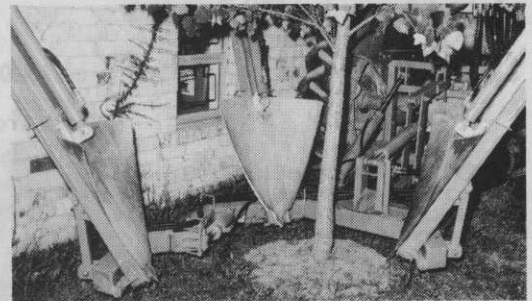
NEW SHORT-FRAME

CARETREE TRANSPLANTER

IMPROVED - MANEUVERABILITY



- ACCESS
- VISIBILITY
- BALANCE
- SPEED



FOR CLOSE-SPACED NURSERY
AND LANDSCAPING OPERATIONS

CARETREE SYSTEMS

BOX 347, WORTHINGTON, OHIO 43085

Tel. (614) 846-2665

Buffalo Turbine Equipment Co.
 Century Engineering Corp.
 Contree Sales, Inc.
 Delavan Mfg. Co.
 Foamspray Chemicals, Inc.
 Friend Mfg. Corp.
 W. L. Hamilton Co.
 H. D. Hudson Mfg. Co.
 L. L. Larson Machine, Inc.
 Melnor Industries
 F. E. Myers & Bro. Co.
 Papec Machine Co.
 Root-Lowell Corp.
 Spraying Systems Co.
 Walsh Mfg. Co.

SPRAY NOZZLES, DISKS

The Broyhill Co.
 Century Engineering Corp.
 Delavan Mfg. Co.
 Friend Mfg. Corp.
 L. L. Larson Machine, Inc.
 F. E. Myers & Bro. Co.
 Spraying Systems Co.
 Vandermolen Co.
 Walsh Mfg. Co.

SPRAY NOZZLES, WHIRLS

The Broyhill Co.
 Century Engineering Corp.
 Delavan Mfg. Co.
 Friend Mfg. Corp.
 L. L. Larson Machine, Inc.
 F. E. Myers & Bro. Co.
 Spraying Systems Co.
 Walsh Mfg. Co.

SPRAY-SLEEVE

Becco Products Co.

SPRAYER, BIFLUID

The Broyhill Co.
 Buffalo Turbine Equip. Co.
 Red Ewald, Inc.
 FMC Corp., Ag. Machinery Div.
 Finn Equipment Co.
 Friend Mfg. Corp.

SPRAYERS, BOOM

Amchem Products, Inc.
 John Blue Co., Inc.
 The Broyhill Co.
 Century Engineering Corp.
 Contree Sale, Inc.
 Cushman, OMC-Lincoln
 Deere & Co.
 Red Ewald, Inc.
 FMC Corp., Ag. Machinery Div.
 Fimco, Inc.
 Friend Mfg. Corp.
 Hahn, Inc.
 H. D. Hudson Mfg. Co.
 International Harvester Co.
 L. L. Larson Machine, Inc.
 F. E. Myers & Bro. Co.
 Papec Machine Co.
 Root-Lowell Corp.
 Walsh Mfg. Co.
 Waymark

SPRAYERS, CART OR WHEELBARROW TYPE

Amchem Products, Inc.
 The Broyhill Co.
 Buffalo Turbine Ind. Equip. Co.
 Century Engineering Corp.
 Chapin, R. E., Mfg. Works, Inc.
 Deere & Co.
 Red Ewald, Inc.

FMC Corp., Ag. Machinery Div.
 Fimco, Inc.
 Friend Mfg. Co.
 H. D. Hudson Mfg. Co.
 L. L. Larson Machine, Inc.
 F. E. Myers & Bro. Co.
 Root-Lowell Corp.
 Solo Motors, Inc.

SPRAYERS, COMPLETE POWER UNIT (Also See Pumps)

Joh ezlue Co., Inc.
 Bowie Industries, Inc.
 The Broyhill Co.
 Buffalo Turbine Ag. Equip. Co.
 Century Engineering Corp.
 R. E. Chapin Mfg. Works, Inc.
 Contree Sales, Inc.
 Cushman, OMC-Lincoln
 Deere & Co.
 Echo Chain Saw Div., Kioritz Corp. of America
 Edwards Mfg. Co.
 Red Ewald, Inc.
 FMC Corp., Ag. Machinery Div.
 Ferrari Tractors
 Fimco, Inc.
 Friend Mfg. Corp.
 Hub States Corporation
 H. D. Hudson Mfg. Co.
 Hydro Turf
 Hypro Div., Lear Siegler, Inc.
 L. L. Larson Machine, Inc.
 Lawn Medic, Inc.
 Leigh Products, Inc.
 Lockwood Corporation
 London Fog Company
 F. E. Myers & Bro. Co.
 Parco Products Co.
 Public Health Equip. & Supply Co.
 Robco, Inc.
 Root-Lowell Corporation
 Smith & Co., Inc. D. B.
 Smithco, Inc.
 Solo Motors, Inc.
 Spray Baby, Inc.
 Tradewinds, Inc.
 Tree Ject Company
 The Vandermolen Co.
 Walsh Mfg. Co.
 Waymark
 Wayne Engineering Corp.

SPRAYERS, COMPRESSED AIR

R. E. Chapin Mfg. Works, Inc.
 Curtis-Dyna Products Corp.
 Red Ewald, Inc.
 H. D. Hudson Mfg. Co.
 L. L. Larson Machine, Inc.
 Parco Products Co.
 Public Health Equip. & Supply Co.
 Root-Lowell Corp.

SPRAYERS, HAND

Bartlett Mfg. Co.
 Broyhill Co.
 Buffalo Turbine Ag. Equip. Co.
 Century Engineering
 R. E. Chapin Mfg. Works, Inc.
 Contree Sales, Inc.
 Deere & Co.
 Friend Mfg. Co.
 H. D. Hudson Mfg. Co.
 L. L. Larson Machine, Inc.
 Leigh Products, Inc.
 Melnor Industries, Inc.
 Parco Products Co.
 Root-Lowell Corp.
 Solo Motors, Inc.
 Tradewinds, Inc.
 The Vandermolen Co.
 Walsh Mfg. Co.

IT'S A FACT...

OVER A MILLION EARTHWORMS CAN INHABIT AN ACRE OF SOIL... DARWIN ESTIMATED THAT IN ONE ACRE, UP TO 10 TONS OF SOIL PASSES THROUGH THE BODIES OF EARTHWORMS EACH YEAR.



MOST CULTIVATED LAND in humid areas of the U.S. WILL ERODE AT AN AVERAGE OF 1 INCH OR MORE PER CENTURY.

NOTHING CAN MATCH terra TACK



...AND THAT'S A FACT! Terra Tack as a spray helps control soil erosion.

- **TERRA TACK HELPS PREVENT EROSION** WHEN USED AS AN OVERSPRAY BY HOLDING STRAW OR HAY IN PLACE.
- **TERRA TACK, IN A SLURRY OF SEED, FERTILIZER, AND FIBER, FORMS AN ADHESIVE TO HELP PREVENT EROSION.**
- **TERRA TACK'S COST?... AMAZINGLY LOW!**



WITH TERRA TACK WITHOUT TERRA TACK

Grass Growers

Box 584, Plainfield, N. J. 07061 (201) 755-0921

SPRAYERS, HOSE END

Amchem Products, Inc.
Bar-Way Mfg. Company
Broyhill Co.
Century Engineering Corp.
R. E. Chapin Mfg. Works, Inc.
FMC Corp., Ag. Machinery Div.
Friend Mfg. Co.
Hub States Corporation
H. D. Hudson Mfg. Co.
L. L. Larson Machine, Inc.
Leigh Products, Inc.
Melnor Industries, Inc.
F. E. Myers & Bro. Co.
Tree Ject Company
Walsh Mfg. Co.
Wayne Engineering Corp.

SPRAYERS, KNAPSACK

Bartlett Mfg. Co.
Buffalo Turbine Ag. Equip. Co.
R. E. Chapin Mfg. Works, Inc.
Echo Chain Saw Div., Kioritz Corp.
of America
Friend Mfg. Co.
H. D. Hudson Mfg. Co.
Parco Products Co.
Public Health Equip. & Supply Co.
Robco, Inc.
Root-Lowell Corp.
Solo Motors, Inc.
Stihl American, Inc.
Tradewinds, Inc.
Vandermolen Co.

SPREADERS, DISC-TYPE

L. L. Larson Machine, Inc.
The Vandermolen Co.
Waymark

SPREADERS, HOPPER-TYPE

Arctic Mizer
Avco Ezee Flow Div.
John Blue Co.
Cushman, OMC-Lincoln
Deere & Co.
Ford Tractor Operations,
North America
Gandy Co.



Regal Chemical bags it!

NITROFORM*
organic nitrogen



The nitrogen that pampers delicate turf. Feeds slowly instead of causing surges of growth that can cause stress.

Turf and Horticultural Products, Synthetics Dept.
Wilmington, Delaware 19899

*Registered trademark of Hercules Incorporated. STH74-22

For More Details Circle (142) on Reply Card

Great Lakes Chemical Div.
Herd Seeder Co., Inc.
Highway Equipment Co.
International Harvester Co.
F. D. Kees Mfg. Co.
L. L. Larson Machine, Inc.
Lely Corp.
Ryan, OMC-Lincoln
Simplex Mfg. Co.
Swenson Spreader & MFG. Co.
TCI, Inc.
Vandermolen Corp.
Vicon Farm Machinery, Inc.
Willmar Mfg. Co.

SPREADER, LIQUID

Amchem Products, Inc.
TCI, Inc.

SPRIGGERS

Beck Mfg. Co.
Bermuda King Co.
Bowie Machine Works

SPRINKLERS (See Irrigation)

STENCILS, MARKING
Fox Valley Marking Systems
M-B Company

STONE PICKER (Also See Rock Picker)

Armor Metal Products
William Bergman Company
Bridgeport Imple. Works, Inc.
Lockwood Corp.

STRAINERS

Hypro Division, Lear Siegler, Inc.

STRAINERS, SUCTION

Bar-Way Mfg. Co.

STUMP CUTTER/REMOVER

Arps Corp.
FMC Corp., Sweeper Div.
Hesston Corp., Lawn Equipment
Div.
International Harvester Co.
Karl Kuemmerling, Inc.
Levco Mfg., Inc.
Olathe Mfg., Inc.
Valley Products Corp.
Vermeer Mfg. Co.

SWEEPERS, LAWN (Also See Broom, Vacuum)

Billy Goat Industries, Inc.
BlueBird International, Inc.
Clark Div., Clarke-Gravely Corp.
Deere & Co.
FMC Corp., Sweeper Div.
International Harvester Co.
Jacobsen Mfg. Co.
M-B Company
Mars Industries, Inc.
Mathews Company
Melroe Mfg. Co.
Mid-State Metal Casters & Mfg. Co.
Nunes Mfg.
Parker Sweeper Co.
Ryan, OMC-Lincoln
Sweepster, Jenkins Equip. Co.
Tennant Maintenance Systems
The Toro Company
Turf Vac Corp.
Wheel Horse Products, Inc.

TAILGATES, LIFTING

Adventure Line Mfg. Co.
S & H Industries, Inc.

TANKS, SPRAY

John Blue Co.
The Broyhill Co.
Century Engineering Corp.
Contree Sales
Edwards Mfg. Co.
Red Ewald, Inc.
FMC Corp., Ag. Machinery Div.
Fibre Glass Products
Friend Mfg. Corp.
Hemco Corporation
H. D. Hudson Mfg. Co.
Inject-O-Meter Mfg. Co.
L. L. Larson Machine, Inc.
Leigh Products, Inc.
F. E. Myers & Bro. Co.
Papec Machine Co.
Raven Industries
Root-Lowell Corporation
Walsh Mfg. Co.

THATCHERS (See Mowers, Vertical)

Arctic Mizer
Arps Corporation
BlueBird International, Inc.
E-Z Rake, Inc.
Giant-Vac Mfg., Inc.
Johnson Hydraulic Equip.,
Div. Arps Corp.
F. D. Kees Mfg. Co.
Parker Sweeper Company
Ryan, OMC-Lincoln
Swenson Spreader & Mfg. Co.
Triumph Machinery Co.

TILLERS

Allis-Chalmers
Ariens Co.
Auto Hoe, Inc.
J. I. Case, Outdoor Power
Equip. Div.
Conaway, Inc.
Contree Sales, Inc.
Deere & Co.
Engineering Products Co.
FMC Corp., Ag. Machinery Div.
FMC Corp., Outdoor Power
Equip. Div.
FMC Corp., Side-Winder
Ferrari Tractors
Ford Motor Co., Tractor Div.
Gravely Corp., Div. Clarke-Gravely
Howard Rotavator Co., Inc.
International Harvester Co.
Jacobsen Mfg. Co.
Lakes Supply Co., Inc.
Lely Corp.
Massey-Ferguson, Inc.
MTD Products, Inc.
Roseman Mower Corp.
Roto-Hoe Co.
Simplicity Mfg. Co.
Solo Industries, Inc.
Village Blacksmith
Wheel-Horse Products
Yazoo Mfg. Co., Inc.

TIRES

Dunlop Tire & Rubber Corp.

TOOLS, HAND, HYDRAULIC, PNEUMATIC

Black & Decker Co.
Deere & Co.
Friend Mfg. Corp.
F. D. Kees Mfg. Co.
Limb Lopper Co., Inc.
H. K. Porter, Inc.
Seymour Smith & Son, Inc.
Village Blacksmith

TOOL BOXES, PICKUP (See Chests, Tool)

Hemco Corporation
Knaack Mfg. Co.

TOP DRESSERS

Cushman, OMC-Lincoln
Jabobsen Mfg. Co.
Lely Corp.
Ryan, OMC-Lincoln
Smithco, Inc.

TRACTORS, 8-12 HP

AMF Western Tool Division
Allis-Chalmers Corp.
Ariens Company
Avco New Idea
J. I. Case, Outdoor Power
Equip. Div.
Deere & Co.
FMC Corp., Outdoor Power
Equip. Div.
Ferrari Tractors
Ford Tractor Operations, North
America
Gravely, Div. Clarke-Gravely
International Harvester Co.
Massey-Ferguson, Inc.
Simplicity Mfg. Co.
Smithco, Inc.
Speedex Tractor Co.
Wheel-Horse Products
Yardman, The Leisure Group, Inc.

TRACTORS, 13-20 HP

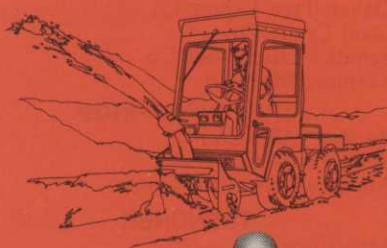
Allis-Chalmers Corp., Outdoor and
Leisure Products
Avco New Idea
John Blue Co.
J. I. Case, Outdoor Power
Equip. Div.
Conaway, Inc.
Deere & Co.
Economy Tractor
Engineering Products Co.
FMC Corp., Outdoor Power
Equip. Div.
Ferrari Tractors
Ford Tractor Operations, North
America
General Electric, Outdoor Power
Equip. Operations
Gravely, Div. Clarke-Gravely Corp.
Hesston Corporation, Ind. Div.
International Harvester Co.
Kubota Tractors, Inc.
Massey-Ferguson, Inc.
Satoh Tractor c/o NEDA
Simplicity Mfg. Co.
Speedex Tractor Co.
Tradewinds, Inc.
Wheel-Horse Products
Yardman, The Leisure Group, Inc.

TRACTORS, 21-60 HP

Allis-Chalmers
Deere & Co.
Ferrari Tractor
Ford Tractor Operations, North
America
International Harvester Co.
Kubota Tractors, Inc.
Massey-Ferguson, Inc.
J. Pickrell Co.
Satoh Tractor c/o NEDA
Slope Tractor, Inc.
Tradewinds, Inc.
Waldon, Inc.

TRACTORS, 61-150 HP

Allis-Chalmers
Deere & Co.
Ford Tractor Operations
Massey-Ferguson, Inc.

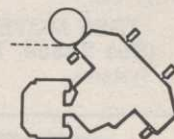


**Exclusive features
put you up front — into a whole new era
of grounds maintenance**

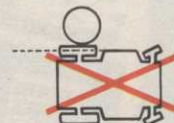
Hesston Front Runner® GMT... really ahead of the times!

Made-over or make-do equipment just won't do the professional job of groundskeeping you want the year around. This one performs in all seasons: mowing grass...vacuuming lawns...clearing snow...moving earth. And it performs far more efficiently than a scaled-down farm tractor.

The Front Runner, built specifically for grounds maintenance, is a tough, gutsy tractor with front-wheel hydrostatic drive and hydraulically controlled front-mounted attachments. Its top features? Articulated steering and vacuum pickup. The center pivot lets you mow easily around trees and shrubs, along curving walks and drives — usually in a single pass. An integrated vacuum pickup attachment to mower heads is self contained — it deposits trimmings in the tractor's built-in carryall. If you do need to stop and back up, there's no bulky trailer in the way! Your speed is infinitely variable from 0 to 11 mph.



Hesston Front Runner with exclusive articulated steering bends in the middle for easy maneuverability around obstacles in close quarters.



Conventional solid frame garden tractor with belly-mounted mowers can't match the easy maneuverability and up-close cut of the Front Runner.

The Front Runner GMT is available in three models — 16, 18 and 19.8 hp. Choose from 48", 60" and giant 80" batwing mower heads. All attachments fit all models so you can get the capabilities and power most efficient for you. Send for color literature that includes specifications on all three models.

HESSTON
CORPORATION

FR-174C

8640 Brookville Road
Indianapolis, Indiana 46239

Lawn Equipment Division

Please send me more information on the Hesston Front Runner GMT and the name of my nearest dealer.

NAME _____

COMPANY _____

ADDRESS _____

TOWN/STATE _____

ZIP _____

Waldon, Inc.

TRACTORS, 151 and up HP
Deere & Co.
Ford Tractor Operations
International Harvester Co.
Massey-Ferguson, Inc.
Waldon, Inc.

TRACTORS, CRAWLERS
Allis-Chalmers
Deere & Co.
International Harvester Co.

TRAILERS
Beatty Trailers
John Blue Co.
The Champion Co.
Clark Equipment Trailer Div.
Deere & Co.
Fayette Division, Dayton-Walther Corp.
Ginther Equipment Corp.
Harvestall Industries, Inc.
Jacobsen Mfg. Co.
Lakeside Mfg. Corp.
Lawn Medic, Inc.
Magline, Inc.
Maxey Mfg. Co., Inc.
Miller Tilt-Top Trailers, Inc.
R.A.M. Industries, Inc.
Rogers Bros.
E. R. Schwartz Mfg. Co.
Selma Trailer and Mfg. Co.
The Snow Company
Wheel Horse Products, Inc.

TRASH COMPACTORS
Piqua Engineering, Inc.

TREE INJECTORS
Creative Sales
Ferti-Feeder
Tree-Ject Company
Walsh Mfg. Co.

TREE MOVERS
(See Spade, Tree)
CareTree Systems



Lawn King bags it!

NITROFORM*
organic nitrogen



The concentrated organic that takes up less storage space. Pathogen-free and odorless, too.

Turf and Horticultural Products, Synthetics Dept.
Wilmington, Delaware 19899

*Registered trademark of Hercules Incorporated. STH74-11

For More Details Circle (143) on Reply Card

Davey Tree Expert Co.
Ideal Crane Div.
Schutt's Equipment Co.
Vermeer Mfg. Co.

TREE WRAPPINGS
Bartlett Mfg. Co.
Bemis Mfg. Co.
American Excelsior Corp.

TRENCHER
Arps Corp.
Charles Machine Works
Davis Mfg.
Digz-All Trencher Co.
Ground Hog, Inc.
Moody Sprinkler Co., Inc.
Toro Irrigation Division
Towner Mfg. Co.
Vermeer Mfg. Co.

TRIMMERS, HEDGE AND GRASS, PARTS
Barlett Mfg. Co.
The Black & Decker Mfg. Co.
Bunton Co.
Conaway, Inc.
Gandy Company
Goodall Div.
Grandberg Industries
Jacobsen Mfg. Co.
K-D Mfg. Co.
Melnor Industries, Inc.
H. K. Porter, Inc.
Rowco Mfg. Co., Inc.
Seymour Smith & Son, Inc.
Stihl American, Inc.
Tallman Equip. Co., Inc.
Village Blacksmith
Wisconsin Marine, Inc.
Yazoo Mfg. Co., Inc.

TRUCK, ACCESSORIES
Maxey Mfg. Co., Inc.

TRUCK, FORESTRY
Asplundh Chipper Co.
Mobile Aerial Towers, Inc.

TRUCK, LIGHT-HAULING, UTILITY
Cushman, OMC-Lincoln
Ginther Equipment Corp.
HMC
Jacobsen Mfg. Co.
Wayne Engineering Corp.

TRUCK, UTILITY BODIES
Fibre Glass Products

TUBING
(Also See Hose)
American Hose & Reel Co.

TURF VEHICLES
Club Car, Inc.
Cushman, OMC-Lincoln
E-Z Go Car, Div. Textron, Inc.
G.E.M. Products, Inc.
HMC
Harley-Davidson Motor Co., Inc.
Jacobsen Mfg. Co.
Jeep Corporation
Otis Elevator Co., Special Vehicle Div.
Pargo, Inc.
J. Pickrell Co.
Ryan, OMC-Lincoln
Smithco
The Snow Company
The Toro Company
Westinghouse Electric Corp.

UNDERWATER WEED HARVESTER
(See Aquatic Weed Harvester)
A.O.A. Research & Development, Inc.

Air-Lec Industries, Inc.
Aquamarine Corporation
Mud Cat, Div. of National Car Rental
The Vandermolen Co.

UNDERWATER WEED RAKE
A.O.A. Research & Development Inc.
Air-Lec Industries, Inc.

UNLOADERS
Dico Co., Inc.

UTILITY TRAILERS
Beck Mfg. Co.
Magline, Inc.
Miller Tilt-Top Trailers, Inc.

VACUUMS
Allis-Chalmers Mfg. Co.
Arctic Mizer
Ariens Co.
Billy Goat Industries, Inc.
The Black & Decker Mfg. Co.
Clarke Div., Clarke-Gravelly Corp.
Conaway, Inc.
Deere & Co.
E-Z Rake, Inc.
Giant-Vac Mfg., Inc.
Hesston Corp., Lawn Equipment Div.
Jacobsen Mfg. Co.
MTD Products, Inc.
Nunes Mfg.
Parker Sweeper Co.
Rego Div. Golconda Corp.
Ryan, OMC-Lincoln
Simplicity Mfg. Co., Inc.
Sweepster, Jenkins Equip. Co.
Swenson Spreader & Mfg. Co.
Tennant Maintenance Systems
Turf Vac Corp.
Wheel-Horse Products

VALVES
(Also See Irrigation Valves)
Aqua-Dial
Hypro Division, Lear Siegler, Inc.
Inject-O-Meter Mfg. Co.

VALVE BOXES
Ametek, Plymouth Plastics Div.

VERTICAL SLITTER, TURF
BlueBird International, Inc.
Ryan, OMC-Lincoln

VIBRATORY PLOWS
Charles Machine Works
Davis Mfg.

WASHERS, HIGH PRESSURE
Century Engineering Corp.
Fimco, Inc.
Walsh Mfg. Co.
Wayne Engineering Corp.

WEED HARVESTER
Weed Eaters, Inc.

WELDERS
American Lincoln Corp.

WINCH
(Also See Hoist)
Fairmont Hydraulics
Hoffco, Inc.
Ideal Crane Div.
International Harvester Co.
Fred A. Lewis Company
Maasdam Pow'r Pull, Inc.