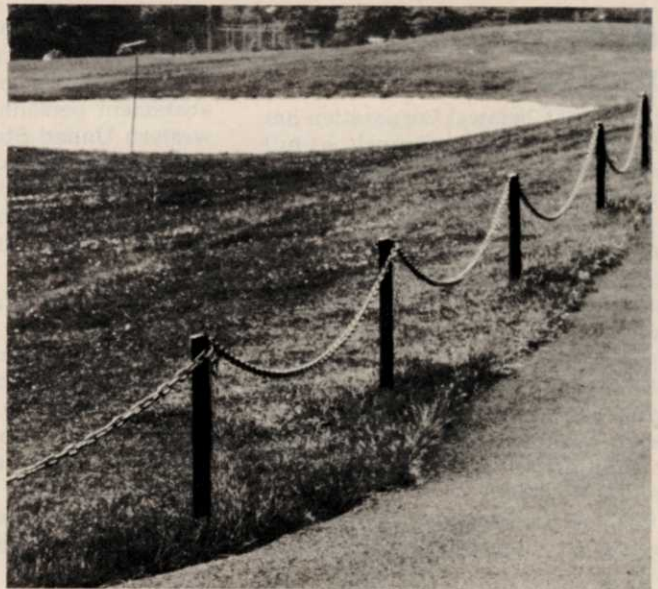




**CENTER-MOUNTED ROTARY:** Gravely, Clemmons, North Carolina

Here's a 50 inch center mount rotary mower and a 16½ HP tractor that make a combination that's hard to beat. It's the same tractor that made the torture test, mowing from Washington, D. C. to New York City in 12 days. Transmission on this powerhouse allows a choice of eight ground speeds. Another advantage is constant attachment speed. It permits operator to match ground speed with the job at hand. For more details, circle (701) on the reply card.



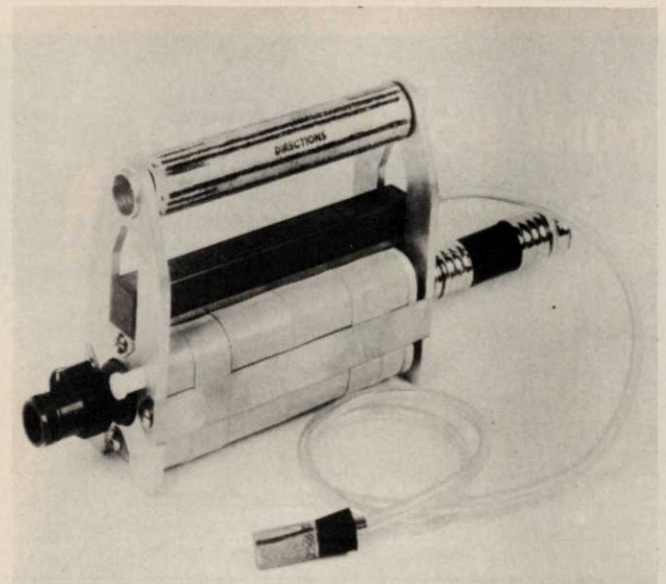
**POLY-X CHAIN:** Mercury Products Corporation, Providence, R.I.

Need a personnel barricade or barrier? A warning of a hazard? Use this colorful and decorative as well as durable polyethylene chain. It's available in several sizes and colors. Requires little or no maintenance and it is available in strengths up to 1200 lbs. of force. Also available are posts and cones on which chain is attached. Ideal for the golf superintendent or the parks and grounds manager. For more details, circle (702) on the reply card.



**HYDROGRASSER:** Reinco, Inc., Plainfield, N.J.

Model HG-25 is a low profile, 2500 gallon unit that can seed and fertilize five acres in one operation. Built for the large acreage user, this machine doesn't employ any belts, cables, pulleys or special drives. Fewer moving parts virtually eliminate down time. It can be chassis mounted and has a directional spray turret boom. The recirculating jet agitation insures continuous, uniform, no-clog solids dispersion. For more details, circle (703) on the reply card.



**HYDROCARE POWER SPRAYER:** Agro Chem, Inc., Chicago, Ill.

This small but powerful unit does the job of sprayers much larger in size. It attaches quickly to a standard water spigot. Here's how it works: Water flowing through the injection applicator activates four pistons which accurately inject liquid concentrate chemicals into the water stream at the ratio of one part concentrate to 24 parts water. Works positively on water pressures from 20 to 80 psi and flow rates from 1/10 to 7½ gpm. For more details, circle (704) on the reply card.

