

Green Industry Newsmakers

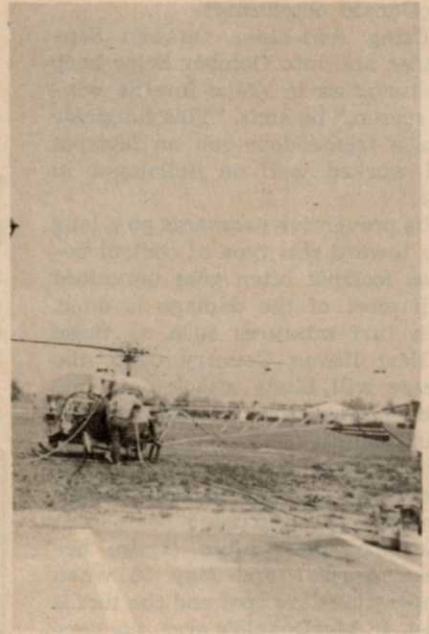


Hi Doll! A four-foot tall stuffed elf is strapped into a seat aboard a flight from Kansas City, Mo. to Los Angeles by Continental Airlines' stewardess Izetta Franzen as Gary Kisner, one of its creators, sits in the next seat. The elf was created to symbolize Cushman/Ryan turf care products and was exhibited at the 45th International Turfgrass Conference and Show in Anaheim, Calif.

Caddo Lake, one of the nation's most picturesque bodies of water, was



William Flemmer, III, president of Princeton Nurseries, is shown absorbed in his topic, "Nature's Guide to Successful Gardening and Landscaping". He commented on a slide presentation to the some 300 landscape contractors at the Two-Day Short Course, sponsored by ALCM and the Cooperative Extension Service at Mendon, Mass.



A chopper in Elm Grove, Wis.? It seems a huge invasion of leaf-eating cankerworms would hatch as the city's tree buds broke and leaves expended. So, a city-wide spraying program with *Bacillus thuringiensis* (Thuricide) was initiated in the Spring of 1973 to control this serious pest. The aerial spraying techniques proved successful.

in danger of being overtaken by noxious vegetation until rescue efforts were made through the use of chemical weed control, according to L. V. Guerra of the Texas Parks and Wildlife Department.

Guerra, reporting to some 1,000 people at the Weed Science Society of America in late February, said Caddo had become almost impassable for boat traffic.

The department has reopened most of the lake using 50,000 lbs. of a granular formulation of 2,4-D (Aqua Kleen).

The lake, straddling the Texas-Louisiana border, was the scene of several Walt Disney productions.



Moody Sprinkler Co., Inc. has moved to Calif. The company's new plant is located in the Costa Mesa area. The greatly expanded manufacturing facilities are geared to step up production of their Rainmaster and Customline models.