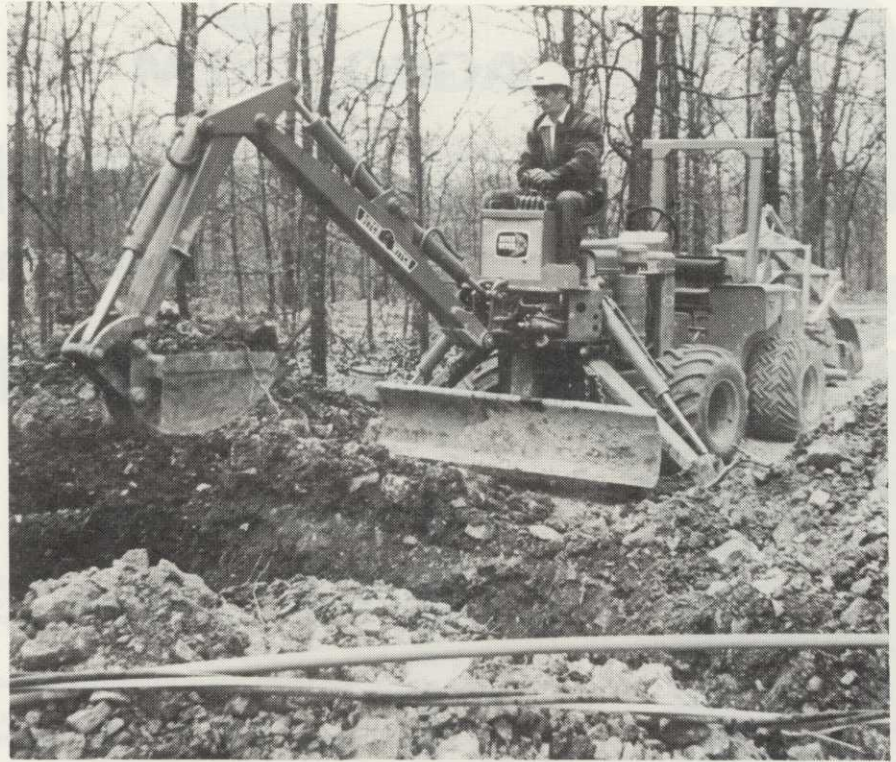
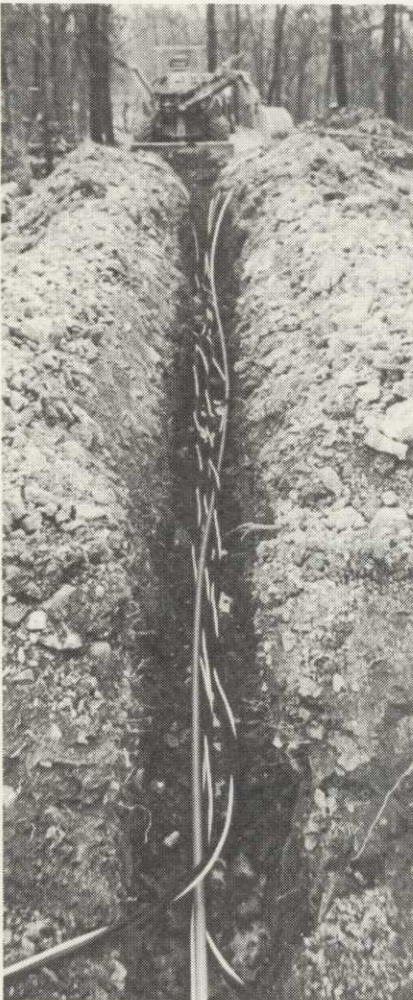


Trench width was 12 inches wide. Depth was four feet.



The front-mounted utility backhoe was used to intersect trenches.



All the services were buried in the same trench.

## Lifelines To Campsite Hidden From View

**O**ZARK MOUNTAIN campsites with all the conveniences of home — that's what Missouri's Silver Dollar City offered this season.

About 160 campsites were ready for the 1973 season and they featured electricity, water and sewer ready to be connected to the camper's trailer. Some even have a connection to hook up to telephone service.

Located in Southwest Missouri, Silver Dollar City is a recreation center in the Ozark Mountains. The city itself is a replica of an 1880's-style town featuring crafts, shows, and historical rides. Good fishing is nearby at Table Rock Lake.

One of the important considerations in building the new campsites was the preserve the natural beauty of the rugged, wooded area. So all utility service lines to the sites were buried. Silver Dollar City workmen accomplished most of the work themselves. However, trenching for the buried lines was contracted to Southwest Cable Plow Co.

Darrel Rantz, who operates Southwest Cable, used a diesel-powered R65 Ditch Witch trencher, equipped with a front-mounted utility backhoe, for most of the digging.

"We dug trench 12 inches wide,

four feet deep and buried the power and telephone cable, the water and sewer lines and a control line all in the same ditch," says Rantz.

"We used the trencher to do most of the trenches and the backhoe to intersect them. Since the hoe is on the front and the digging assembly is on the rear of the machine, we can switch from one operation to the other without losing time changing attachments or bringing in another machine."

Rantz says the area is extremely hard to dig in because of the rocks.

"We had a deadline to get 75 of the sites done before a convention", says Darrel, and we think it would have been impossible to meet the deadline without the Ditch Witch. It would have taken six or seven backhoes to do what we did with one Ditch Witch."

The R65 is a four-wheel drive unit so it could be easily maneuvered through the underbrush and around the job site.

The total job included more than 20,000 feet of trench.

A Silver Dollar City spokesman says that another 100 similar campsites are projected for future construction. □