

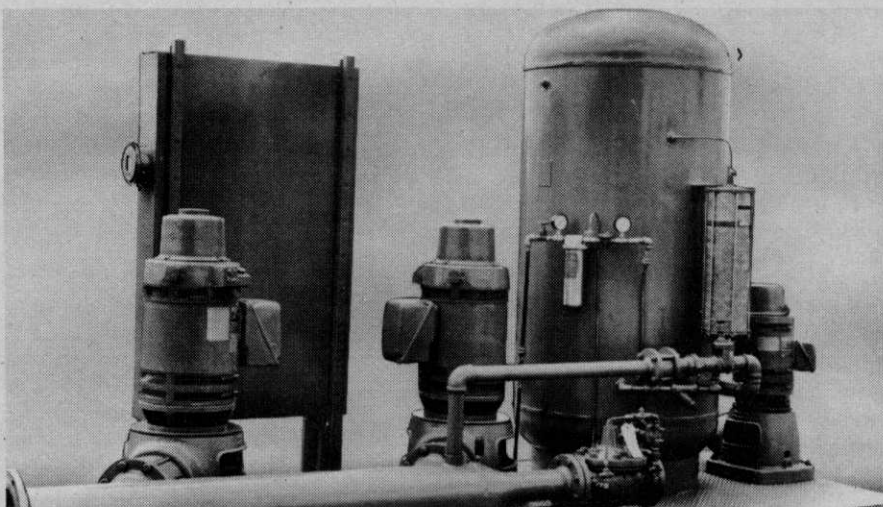
## Pump Station Problems Solved By Texas Firm

What's the source of most of the problems facing owners and operators of golf course sprinkler systems?

It's the pump station. At least that's the view of Venable Sprinkler Sales, Inc., a Texas-based company which designs, supplies and installs sprinkler systems.

According to Robert T. Venable, executive vice president, there are two reasons why the pump station is the source of so much trouble in connection with installing a sprinkler system. "There are many competent irrigation contractors, but few of these are good at installing pumps. As a result, there is a tendency to either get a bad total system because the pump station was installed by unqualified contractors, or the responsibility is divided between the pump and irrigation contractors with neither wanting to take the responsibility for the job."

The solution, according to Venable, is a pre-assembled, pre-wired pump station, with pre-built flume and could be used with their systems.



Pre-assembled, pre-wired Pump-A-Matic has been developed by Venable Sprinkler Sales, Inc. The new pump station will solve many of the basic problems for sprinkler systems. Electrical panel permits easy wiring to an irrigation system.

adjustable pre-built stacks.

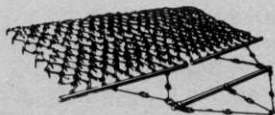
The company originally built this pump station and designed it so it They report that golf course architects who have seen the unit like the fact that it can eliminate unsightly pump stations on the course.

The unit can be installed in two days after arrival on the job site. No welding is necessary since it is

pre-built, with only a minor amount of bolting required. The flume and the stacks, the discharge for the pressure relief and bypass of the double dogleg from the pump header are all that need to be bolted. Wiring also is held to a minimum because much of it is done prior to shipment.

Called Pump-A-Matic, the unit

## THINK FUERST, FIRST



Maintenance-free Fierst F-l-e-x-i-b-l-e Tine Harrows® are low in cost, yet have so many uses. Adjust easily for turf revitalization, seedbed preparation, working in seed and fertilizer, collecting trash in parks, on beaches and roadways, smoothing road shoulders and many more jobs. From the first tine to the last, Fierst is first. Write today for our low prices.



FUERST BROTHERS, INC.  
Dept. WT-2  
Rhinebeck, N. Y. 12572

"free illustrated literature"

For More Details Circle (170) on Reply Card

## TURF PROFESSIONALS KNOW WHAT THEY WANT in grass seed performance!

...MAN MADE **Adelphi** KENTUCKY BLUEGRASS  
(U.S. Plant Patent No. 3150)

GIVES THEM WHAT THEY WANT\*

MAN-CONTROLLED BREEDING gives it DARKER GREEN COLOR & TOP RATINGS for OVERALL PERFORMANCE

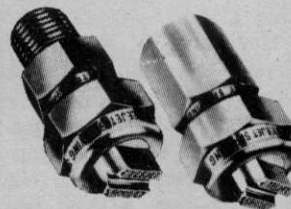
\*For details and/or Informative Free Booklet, contact:

J & L ADIKES, Inc., Jamaica, New York 11423  
JONATHAN GREEN & SONS, Kearny, N.J. 07032  
NORTHROP, KING & CO., Minneapolis, Minn. 55413  
VAUGHAN'S SEED CO., Bound Brook, N.J. • Downers Grove, Ill.

For More Details Circle (147) on Reply Card

## SPRAYING SYSTEMS CO.

**TeeJet®**  
SPRAY NOZZLES  
AND ACCESSORIES



SPRAY BOOM CONTROL VALVES



PRESSURE RELIEF VALVES



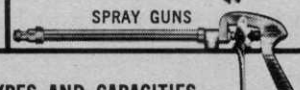
LINE and SUCTION STRAINERS



Vari-Spacing, Split-Eyelet and Hose Shank BODIES and NOZZLES



SPRAY GUNS



Over 800

INTERCHANGEABLE SPRAY TIP TYPES AND CAPACITIES...

tapered edge, even and wide angle flat spray... hollow and full cone... disc type hollow and full cone... and flow regulators. The most complete line for spraying herbicides, insecticides, fungicides, liquid fertilizers and foam solutions. All materials. For complete information write for Catalog 35... and for foam spraying ask for Data Sheets 13602 and 13626.

**SPRAYING SYSTEMS CO.**

North Ave. at Schmale Rd., Wheaton, Ill. 60187  
Telephone: 312 665-5000 / Telex No. 72-8409



PROMPT SHIPMENT FROM STOCK

For More Details Circle (150) on Reply Card

features various options including a high-volume cutoff which turns off all the pumps in case of pipe break in the field at night. It also has a high-pressure cutoff which turns off the pumps if, for example, the controllers were to turn off all of the valves while the pumps were turned on manually.

The only wiring required is the tie-in from the transformer to the pigtailed coming out of the all-in-one panels.

For more details, circle (721) on the reply card.

## Ohio Nursery Short Course Attracts Record Crowd

The Ohio Nursery Short Course for arborists, turf management specialists, landscape contractors, garden center operators and nurserymen held in Columbus, Ohio in January attracted a record crowd of 1,800.

The 65th annual meeting of the Ohio Nurserymen's Association, the annual meeting of the Ohio Chapter of the International Shade Tree Conference and a meeting of Chapter 1 of the American Association of Nurserymen were held in conjunction with the short course. This event is sponsored by The Ohio State University, Ohio Nurserymen's Association, Inc., and Ohio Chapter, I.S.T.C. in cooperation with the Ohio Agricultural Research and Development Center and Ohio Cooperative Extension Service.

The educational sessions highlight the Ohio Nursery Short Course, however, a 70 booth trade show was also featured along with numerous displays of an educational nature.

For the first time, at the "Annual Ye Olde Tyme Dinner," two O.N.A. Distinguished Contribution Awards were presented. One was awarded to Joseph Strickfaden of Strickfaden Nursery, Sandusky, Ohio. Joe has been the general chairman of the L. C. Chadwick Research Fund which is now past the half-way point in the goal to raise \$100,000. In addition, he has served in numerous capacities in the O.N.A. for many years, including the presidency in 1953.

The second recipient was Dr. Kenneth W. Reisch, associate dean, college of agriculture, The Ohio State University. Dr. Reisch, known as "Ken" in the industry has been executive secretary of the O.N.A. for the past 11 years and a co-chairman of the Nursery Short Course for 20 years.

R. Henry Norweb, Director of the Holden Arboretum, Mentor, Ohio

was awarded Affiliate Membership to the O.N.A. in recognition of outstanding service and contributions to the nursery industry through the Arboretums many activities.

Newly elected officers of O.N.A. are: William Thornton, Thornton Environmental Industries, Cincinnati, president; Edward Losely of Herman Losely & Son, Perry, vice president; Pete Olmsted of the Ohio Hardware Association, Columbus, executive secretary.

The new members of the O.N.A. executive committee are: Larry Riegel, The Andersons, Maumee, Ohio; Jack Goode, J. S. Goode Nursery, Circleville, Ohio, and Gied Stroom-

beck, Roemer Nursery, North Madison, Ohio. The remaining members of the executive committee include: immediate past president, Robert Siebenthaler, The Siebenthaler Co., Dayton, Ohio; Dale Manbeck, Manbeck Nurseries, Inc., New Knoxville, Ohio; Kenneth Natorp, The William A. Natorp Co., Cincinnati, Ohio, and Eldon Studebaker, Studebaker Nurseries, Inc., New Carlisle, Ohio.

Elected as governor from Chapter 1 (Ohio) of the A.A.N. Board of Directors was Zophar Warner, Warner Nurseries, Willoughby. Serving as lieutenant governor will be Joseph Strickfaden, Strickfaden Nursery, Sandusky.



## For turf. Any turf.

### 3-D Weedone.

A special blend of three herbicides in one that turns a fairway or a front lawn into beautiful, weed-free turf.

It's powerful. It contains 2,4-D, the standard, time-tested broadleaf herbicide that controls most common turf weeds. Plus Dicamba, to broaden its control to more than 100 species of weeds and woody plants.

It's fast. Silvex speeds up the whole weed-control process and gives you added,



effective control over chickweed, clovers, and other tough weeds.

It's professional. Yet you don't have to be a pro to use it. Just mix with water, spray, and watch the weeds disappear.

Use 3-D Weedone. For great results on turf. Any turf.



Amchem Products, Inc.  
Ambler, Pa. 19002