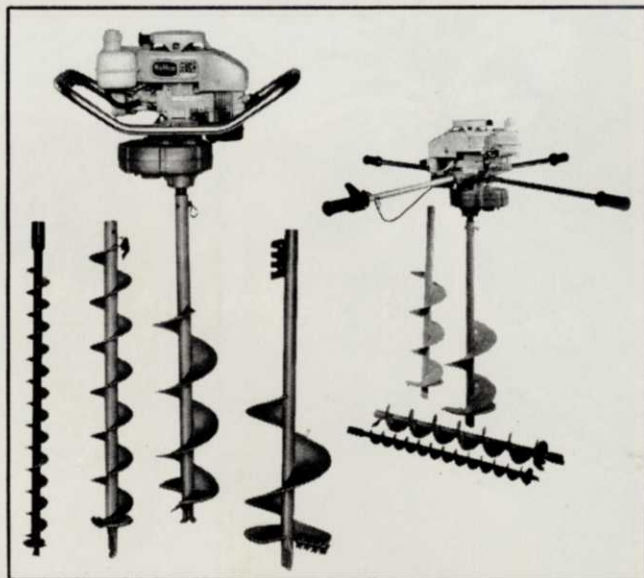




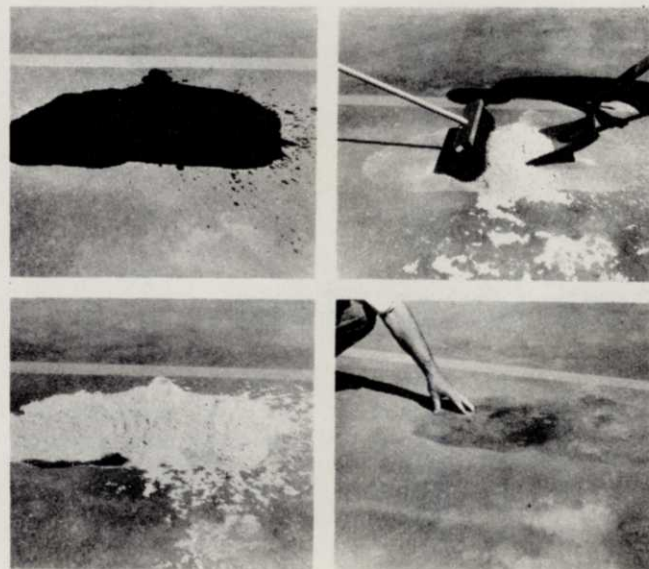
HIGH-PRESSURE HEATER: Century Engineering Corp., Farm Equip. Div., Cedar Rapids, Ia.

Here's a 155,000 BTU oil-fired, high-pressure portable heater that can take the chill off an area in a hurry. It has a 12 gallon fuel capacity that provides 12 hours of continuous heating. All you do is plug the heater in and set the thermostat. A high-pressure pump moves fuel from the tank to a valve which controls flow to the combustion chamber. A fan puts out 325 cubic feet of heated air per minute. For more details, circle (701) on the reply card.



POST HOLE DRILL: Hoffco Inc., Richmond, Indiana

Drills for post holes, earth or other uses are part of this line of machines. There a choice of one man-two cycle, two man-two cycle, or two man-four cycle models. Features include: heavy duty transmission fully equipped with precision ball bearing at all load points; centrifugal clutches with over-riding abilities for the protection of the operators and machines; anti-weep baffles on all fuel tanks; quick release throttle controls, and more. Low tone mufflers are used on all units which exceed all current, metropolitan anti-noise requirements. There a drill available to handle augers from two inches through eight inches. For more details, circle (702) on the reply card.



SPONGE-IT: Johns-Manville, Celite Div., Denver, Colo.

Water and oil spills on streets, driveways and work area floors can be lifted quickly with this new product. It's available in powder form. Tests have shown the powder to be more effective than commercial floor sweep due to its higher absorptive capacity and dryness of oil and powder mixture, according to the manufacturer. To remove oil spill, pour produce over spot and then sweep away powder and oil mixture. Oil is absorbed by powder and effectively removed from surface. For more details, circle (703) on the reply card.



FLEX-A-MATIC 140: Hahn, Inc., Evansville, Ind.

This five-gang reel mower is now available after four years of development and testing. It cuts a swath up to 12 feet and features five 30 inch wide variable speed heavy duty reels driven by mechanical cables. Other features include: fingertip height of cut adjustment from 1/2 inch to 3 1/2 inches; a break-away outboard reel device; and reels positioned around traction wheels to avoid running over uncut grass. Unit has a short turning radius and high flotation tires. For more details, circle (704) on the reply card.