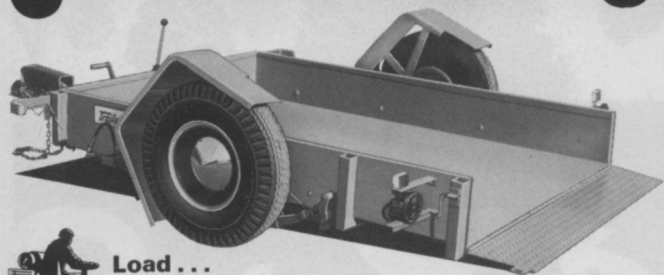


# One Manhandling



**Load ...**  
It's easy with Trailevator.

**Elevate ...**  
The hydraulic elevating trailer that lowers to ground level for fast 'roll-aboard' loading—

**Go ...**  
then lifts its own load to hauling position in just seconds

Handles loads up to 3,000 lbs.\*, lifts and lowers without uncoupling from the towing vehicle. Standard trailer hitch quickly attaches to car, truck or tractor. Try a one-man Trailevator. It'll make you a one-trailer man.

Magline, Inc., Pinconning, Mich. 48650, P.O. Box 209

**Trailevator**

\*Other Models to 5,000 lbs.

**The Hydraulic Elevating Trailer**

For More Details Circle (104) on Reply Card



## NEW 2 cycle BLOWER

**POWERFUL & LIGHTWEIGHT**

- ★ 180 MPH AIRBLAST
- ★ WEIGHS ONLY 50 LBS.
- ★ NO CRANKCASE TO OIL
- ★ BLOWS AT ANY ANGLE
- ★ EASY TO MANEUVER
- ★ EASY TO TRANSPORT

**LIGHTWEIGHT VERSATILE HOSE KIT:** Snaps on blower outlet for cleaning out plant beds, around steps and hard to get at spots.

**VANDERMOLEN CORP.**

119 Dorsa Ave., Livingston, N.J. 07039

For More Details Circle (117) on Reply Card

**THIS WAS NOT DISCOVERED!...**  
but is a product of man's ingenuity

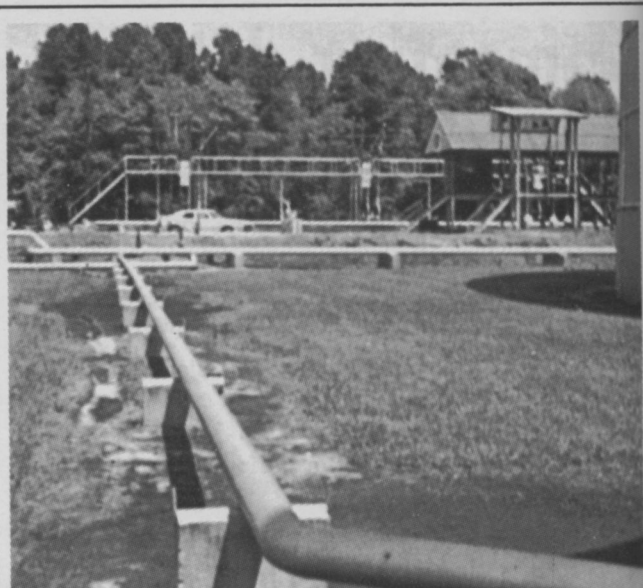
**Adelphi**  
KENTUCKY BLUEGRASS  
(U.S. Plant Patent No. 3150)

**MAN-CONTROLLED BREEDING**  
gives it **DARKER GREEN COLOR** and **HIGHER TEST RATINGS** for **QUALITY & PERFORMANCE** THAN ANY OTHER **BLUEGRASS** currently in widespread use!

For details, contact:

**J & L ADIKES, Inc.**, Jamaica, New York 11423  
**JONATHAN GREEN & SONS**, Kearny, N.J. 07032  
**NORTHROP, KING & CO.**, Minneapolis, Minn. 55413  
**VAUGHAN'S SEED CO.**, Bound Brook, N.J. • Downers Grove, Ill.

For More Details Circle (112) on Reply Card



The tank farm above was treated with Tandex before active growth started. The chemical must be carried into the root zone by moisture. Once there, it is absorbed through the plant root system. Note that lateral movement of the herbicide in the picture is minimal.

## Chemical Corner

Tandex 80 WP karbutilate herbicide is a urea-carbamate compound that has demonstrated exceptional control over weeds, grasses, vines, brush and hard-to-kill wood species.

It is used both as a preemergent or postemergent treatment to non-cropland areas. Commercially available for less than two years, the herbicide has shown high potential as a herbicide for highway shoulders, under asphalt or cement roads, parking lots, military installations, airport runways, tank farms and industrial sites.

Institutional, commercial, and industrial grounds are important use areas for Tandex. It has provided weed and grass control under utility high wires and billboards, along pipelines, railroad rights-of-way, plant site fences, in cemeteries and around guy wires and public monuments.

Tandex is nonselective and at recommended rates control of vegetation will be effective for more than one growing season. Application is made just before or during the period of active growth of vegetation to allow sufficient moisture to carry the chemical into the root zone.

Application is by standard sprayers or in a convenient hand shaker for Tandex 4 granules. The granules provide a convenient means of controlling weeds in areas where mowers cannot reach. Such areas include the edges of buildings, machinery and storage sites, utility poles, property lines, fence rows, and service roads.

Among the weeds for which Tandex is Federally registered are: barnyard grass, crabgrass, brome grass, annual bluegrass, cheatgrass, bermudagrass, dallisgrass, vaseygrass; several broadleaved weeds such as milkweed, bindweed, puncture vine, docks, pigweed, thistles and others; as well as certain wood species, including brambles and poison ivy.

Tandex is manufactured by the Niagara Chemical Division, FMC Corporation, Middleport, N.Y.