

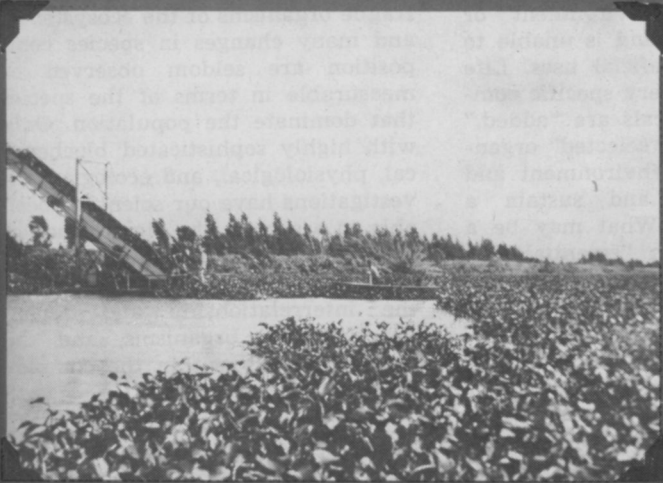
the good ol' days



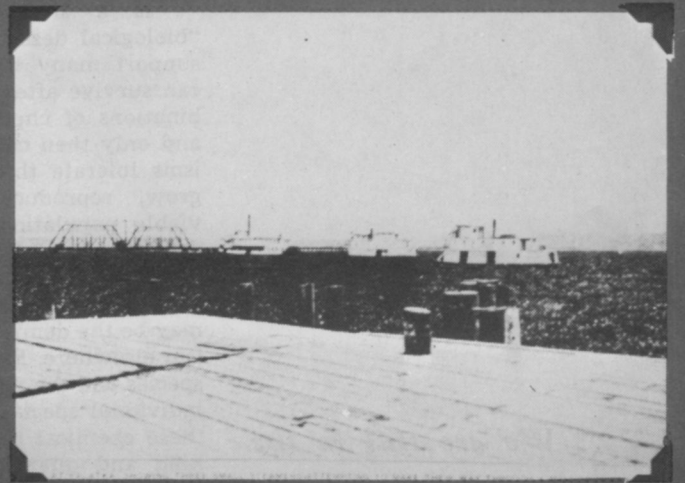
Hyacinth conveyor No. 3 operates in the St. Johns River near Sanford, Fla. in September 1940.



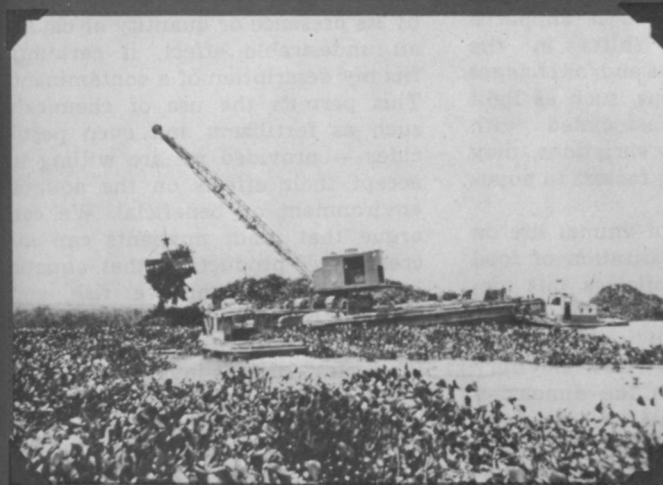
This photo taken on the north fork of the St. Lucie River shows a crane depositing hyacinths on the riverbank.



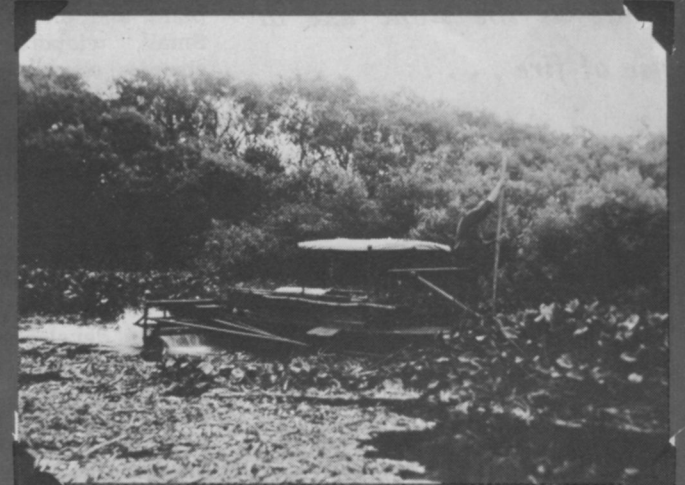
Removing hyacinths with a conveyor in the Hillsboro Canal in the late 1930's.



Three small steamers try to chart a course through hyacinths. The foreground of this un-retouched photo, taken around 1900, is the bridge at Palatka.



In 1927, equipment like this was used to remove hyacinths from navigation channels.



Hyacinth destroyer at work in Arbuckle Creek