

— meeting dates —

Texas Turfgrass Conference, Memorial Student Center, College Station, Tex., Dec. 4-5.

National Agricultural Aviation Association Conference, 6th annual, Las Vegas Hilton (international) Hotel, Nev., Dec. 11-14.

Ohio Turfgrass Conference and Show, Franklin County Memorial Building, Columbus, Ohio, Dec. 12-14.

Kansas State Shade Tree Conference, annual, Student Union, Kansas State University, Manhattan, Kans., Jan. 4-5.

Western Association of Nurserymen, 83rd annual meeting and trade show, Plaza Inn, Kansas City, Mo., Jan. 7-9.

North Carolina Nurserymen's Short Course and Trade Fair, 36th annual, University Student Center, N.C. State University, Raleigh, N.C., Jan. 7-9.

Golf Course Superintendents Association of America, 44th annual International Turfgrass Conference and Show, Boston, Mass., Jan. 7-12.

New York State Arborists Convention, Annual, Nevele Country Club, Ellenville, N.Y., Jan. 14-17.

California Weed Conference, 25th annual, Disneyland Hotel, Anaheim, Calif., Jan. 15-17.

Michigan Turfgrass Conference, 43rd annual, Kellogg Center, Michigan State University, E. Lansing, Mich., Jan. 16-17.

Southern Weed Science Society, 26th annual meeting, Jung Hotel, New Orleans, La., Jan. 16-18.

Ohio Chapter, International Shade Tree Conference, annual meeting, Sheraton-Columbus Hotel, Columbus, Ohio, Jan. 21-25.

Colorado Farm Show, Greeley, Colo., Jan. 22-24.

Associated Landscape Contractors of America, 11th annual meeting and trade exhibit, Doral Country Club and Hotel, Miami, Fla., Jan. 22-26.

University of Tennessee, one week Winter Short Course in Turf Management, West Tennessee Experiment Station, Jackson, Tenn., Jan. 22-26.

Rocky Mountain Regional Turfgrass Conference, 19th annual, Colorado State University, Fort Collins, Colorado, Jan. 25-26.

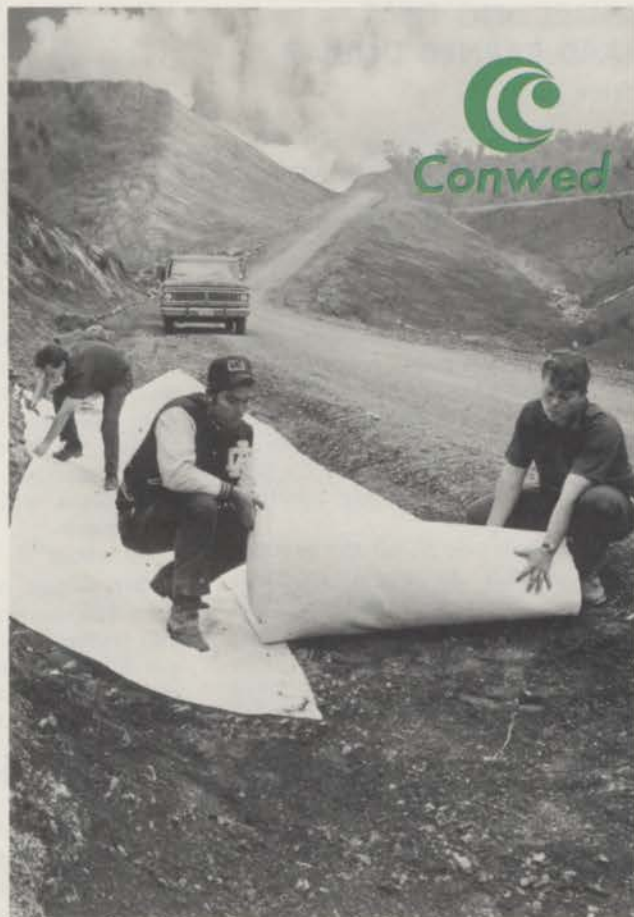
Penn-Del Chapter, International Shade Tree Conference, annual meeting, Marriott Motel, Philadelphia, Pa., Jan. 25-26.

Annual Winter Seminar for Commercial Arborists, O'Hare Concord, Rosemont, Ill., Jan. 30.

Virginia Turfgrass Conference, Sheraton Motor Lodge, Fredericksburg, Va., Jan. 30-31.

Tennessee Turfgrass Association, annual conference, Roger Millers King of the Road Motor Hotel, Nashville, Tenn., Feb. 5-6.

Midwestern Chapter, International Shade Tree Conference, annual meeting, Holiday Inn, 1926 W. Wisconsin Ave., Milwaukee, Wisc., Feb. 6-8.



Promotes germination, reduces soil erosion **Conwed® Turf Establishment Blanket**

Write for the facts. Learn how this lightweight bonded-fiber mulch blanket backed with plastic netting can help establish turf in high-erosion areas—including steep slopes, ditches, channels, loose soils.

Conwed Turf Establishment Blanket, unrolled and stapled to seeded areas forms a thick mulch held in place by a strong plastic netting. The mulch blanket protects seed from moisture loss and temperature extremes; the netting helps reduce water and wind erosion. Easy to handle rolls 50" x 200' weighing about 25 lbs. permit rapid installation with reduced cost.

Your request will also bring you information about Conwed's complete line of other turf establishment products. Write now to: Conwed Corporation, Dept. WTT-122, 332 Minnesota Street, St. Paul, Minnesota 55101.

