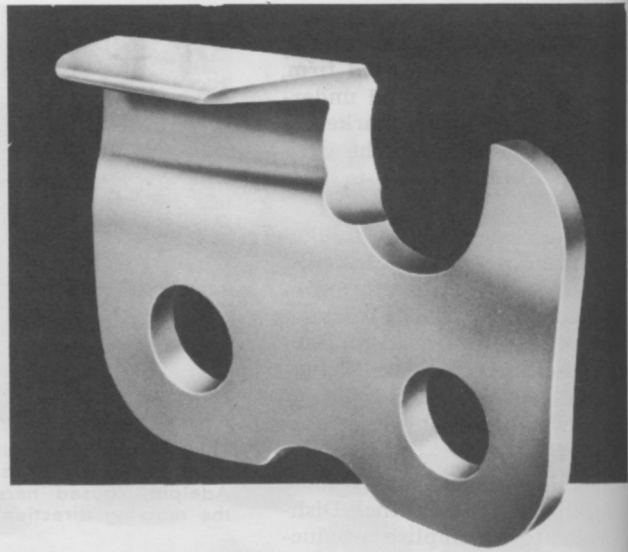


GAS POWERED CHAIN SAW: Skil Corporation, Chicago, Ill.

Get the extra stamina needed for day-long cutting with this model 1645 chain saw. Lightweight in design yet built for the most rugged use, this saw comes with a 4.2 cu. inch engine. It handles a 16 inch bar and chain with ease. Unit includes a special automatic oiler that feeds oil as required plus a manual oiler to pump extra oil in tougher cutting situations. A fuel primer provides fast starts. Saw is well balanced for easy handling even with a bar up to 24 inches in length. Tool weight is 16 pounds. For more details, circle (705) on the reply card.



NEW DESIGN: Sabre Saw Chain, Inc., Lewiston, N.Y.

Users of 2001 saw chain will quickly agree that this new configuration gives the quickest and most efficient cuts yet. Gone are the square cutting corner that contributes to rivet popping and cutter top plate breakage. The new shape is a working corner that is thinner but maintains the speed advantage of the square corner design. Speed is gained because less force is required to pull a thinner cutting edge through the wood fibers. Chain section also has reduced distance between curving force concentration point and rivet head. This keeps breaks and pops to a minimum. For more details, circle (706) on the reader card.



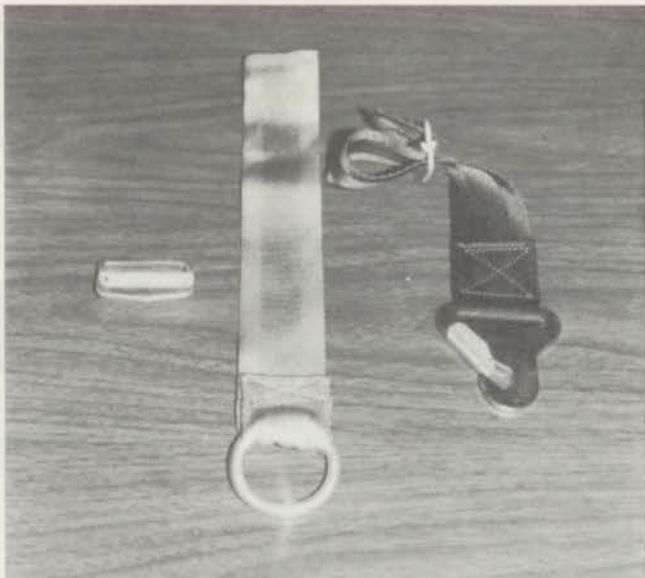
N-BAR FLOATING BARRIER SYSTEM: Sea Guard, Inc., New Castle, Del.

Restrain unwanted vegetation with this clever device that is non-polluting, non-corrosive and ecologically acceptable. Barriers permit passage of water and conform to wave and wind action, but will screen out most solids. Combines the features of a floating boom and an underwater fence. It is constructed of 50 foot lengths of plastic coated metal mesh, 4 feet tall. Rises of polyethylene pipe are attached using nylon tie-wraps. An inflatable rubber boom protected with a sleeve of polyester fabric coated with Hypalon synthetic rubber extends the length of the unit. Company also makes C-Bar, an oil containment barrier. For more details, circle (707) on the reply card.



KWIK KUT SAW: Limb Lopper, Santa Fe Springs, Calif.

Here's a power saw line that is built for performance. Currently produced in electric models only, these saws are designed for easy reach. They are light weight but feature heavy duty metal parts. Saw operates nearly twice as fast as any on the market today. Two heavy and light duty models are available. Sorry fellas, the girl doesn't go with the saw. For more details, circle (708) on the reply card.

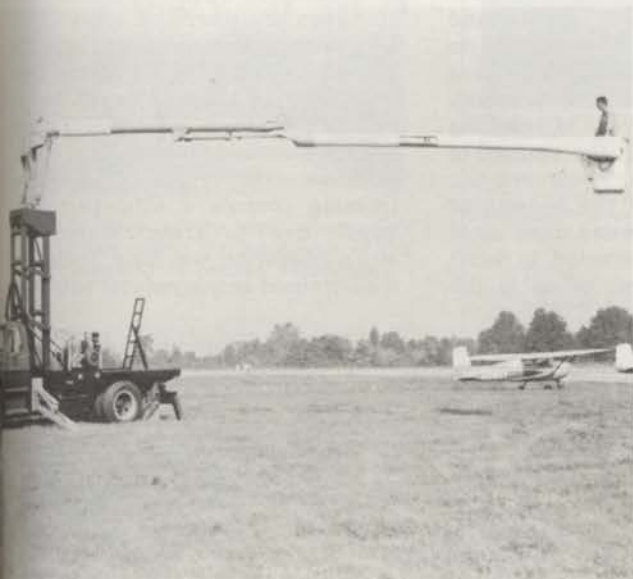


KOOL-GRIND: Granberg Industries, Richmond, Calif.

Simply hold stick to a grinding wheel for a second and you'll quickly notice how much cooler and faster you sharpen. Kool-Grind coats and lubricates grinding wheels, prevents clogging and glazing, and increases grinding wheel life. Comes in a handy stick form. For more details, circle (709) on the reply card.

UNIVERSAL POWER SAW HOLDER: Product Development International, Rutledge, Pa.

Tired of fussing and fuming with make-shift hook-ups to hold your lightweight power saws to your belt or saddle? This holder attaches any saw securely to any saddle or belt in seconds. Made of nylon webbing and a unique slide-bar adapter, gadget easily holds up to 500 pounds. It is instantly interchangeable from saw to saw or even for use in holding other tools. Available with a snap hook or a 2 inch steel ring. Holder is adjustable from 3 to 14 inches and can be hooked up with ease just about any place on the saw that you want it. Weight is six ounces. For more details, circle (710) on the reply card.



ALPINE SERIES LIFTS: Skyworker Corporation, Delaware, Ohio

Boom up to 62 feet with this Model 12-1045 unit. That's about 12 feet more than other units of comparable size. How does it do it? Boom is mounted on a specially engineered hydraulically powered elevating platform. Alpine life is equipped with two sets of outriggers to insure total stability when boom is fully extended in a horizontal or vertical position. Three accessible control levers are installed at the work platform and protected by a molded fibre glass reinforced plastic guard. The unique design of the unit makes possible a much shorter overall stowed length in proportion to the maximum work height. For more details, circle (711) on the reply card.

HEAVY DUTY UTILITY BODIES: Markel Electric Products Co., Inc., Buffalo, N.Y.

These utility bodies are designed for truck cab/chassis from 1 ton to 2½ tons. Compartments house hose reels, chemical pump-tank apparatus and associated gear. More and heavier steel is used throughout the all-welded bodies to permit the units to accommodate the addition of heavy accessory equipment. Bodies are thoroughly rust resistant. Seams and welds are zinc treated. The unit can be customized by adding overhead ladder carriers, rear bumper with pintle hook. Interior shelving is standard in all Morrison Utility Bodies. For more details, circle (712) on the reply card.

