

Chipman of Rhodia Buys Missouri Plant

Chipman Division of Rhodia, Inc., is moving production of herbicides, fungicides, and insecticides of a St. Joseph, Mo., site. The company has purchased the former facilities of Swift & Company and plans to develop the site for both manufacture and distribution of its pesticide line.

Rhodia Vice-President Dr. E. L. Clark has announced that existing plant operations at North Kansas City, Mo., and at St. Paul, Minn., will be closed out.

James Toner, currently plant manager at the North Kansas City branch will become plant manager of the new facility, Clark said.

Company headquarters for Chipman is New Brunswick, N.J.

Chevron Gets Tree Label For Dibrom 8 Emulsive

The Environmental Protection Agency has awarded label registration to the Ortho Division of Chevron Chemical Company, San Francisco, Calif., for use of the insecticide Dibrom 8 Emulsive as an

insect control for ornamental, shade, and forest trees.

Various formulations have previously been labeled for field and truck crops. The new label permits use in urban areas. The company especially recommends Dibrom for Douglas fir, fir, hemlock, juniper, pine, spruce, elm, maple, oak, and others.

Chevron reports that Dibrom is environmentally desirable because it is biodegradable and breaks down rapidly into harmless compounds after application.

It is effective for red spider mites, Sierra fir and Western hemlock bark borers, aphids, leaf miners, and other pests.

GAC Utility Products, Inc. New Name For Highway Line

GAC Utility Products Inc., is the new name for the Highway line of utility, construction, and maintenance equipment being manufactured by the previously known Utility Division of Highway Industries, Inc.

The utility line, acquired by GAC Corporation in 1965 has been producing products at Stoughton, Wis., and at Oliver, British Columbia, Canada. Production facilities at both

locations are being moved and combined in a new plant at Edgerton, Wis. Ron E. Hull, vice-president and general manager, reports that the new plant should be in operation by October 1.

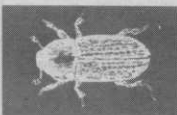
The firm which produces heavy-duty diggers, cable equipment, telescoping aerial devices, articulated aerial platforms, and other associated equipment will continue to carry the Highway brand name. The new location at Edgerton is at 405 E. Fulton St.

Jim Beard Honored As Fellow in ASA

James B. Beard, professor of crop and soil science, at Michigan State University, was elected a Fellow in the American Society of Agronomy (ASA) at the society's recent annual meeting at N.Y.C.

Beard was cited for his contributions to the knowledge of turfgrass management. His research includes environmental physiology, ecology and culture of turfgrasses with emphasis on heat stress, winter injury, adaptation to shade, thatch, the ecology of turfgrass communities, roadside establishment and sod production.

insect report



TURF INSECTS

A BILLBUG

(*Sphenophorus phoeniciensis*)

CALIFORNIA: Adults 100 per square yard of Bermuda-grass turf in El Centro, Imperial County.

GRASSHOPPERS

(*Melanoplus* spp.)

MARYLAND: Nymphs ranged 3-15 per square yard of grass and legume mixture planted along many State and Interstate highways in Baltimore, Frederick, Washington, and Carroll Counties. May move into adjacent croplands within next few weeks. ARKANSAS: Primarily *M. differentialis* and *M. femurrubrum* continue troublesome in extreme northwest area. About 1,500 acres treated in Washington County.

A LEAFHOPPER

(*Dikraneura carneola*)

OREGON: Severely damaged Alta fescue, pubescent wheatgrass, and orchard grass on 350-acre range revegetation project on Aldrich Mountain, Malheur National Forest. No controls undertaken this year.

INSECTS OF ORNAMENTALS

AN EARWIG

(*Labidura riparia*)

CALIFORNIA: Adults infesting soil around residence in Bakersfield, Kern County. This is a new county record.

HOLLYHOCK WEEVIL

(*Apion longirostre*)

VIRGINIA: Adults on hollyhock in Giles County. This is a new county record. KANSAS: Found on hollyhock in nursery in Wallace County. This is a new county record.

TREE INSECTS

EASTERN SPRUCE GALL APHID

(*Adelges abietis*)

WEST VIRGINIA: Galls on 20 percent of trees in one-acre block of Norway spruce in Greenbrier County and 70 percent of trees in 2-acre block in Pocahontas County.

ELM LEAF BEETLE

(*Pyrrhalta luteola*)

KANSAS: Second generation mostly pupated at Topeka, Shawnee County; many Chinese elms show severe damage. COLORADO: Damage becoming heavy; defoliation 100 percent on untreated trees. NEW MEXICO: Larvae heavy, 2-3 per leaf, on Siberian elms scattered throughout Las Cruces, Dona Ana County.