

PROTECT YOUR TURF

SOIL MOISTURE
METER

Maintaining a consistent soil moisture content can be guess work. Or . . . As easy as inserting a portable electric probe into the soil area. A meter reading will tell you the exact moisture content instantly. By using the Meter the saturation efficiency of a sprinkler system in a large field or area can be checked in minutes.

AgTRONICS Mfg. Co. P.O. BOX 1248
Barstow, Calif. • 92311 • 714 • 256-4755

For More Details Circle (141) on Reply Card

New England Producers Publish Sod & Soil Specs

A five-section specifications booklet for sodding and soil preparation has been published by the New England Sod Producers' Association, Inc.

Patterned after a Maryland-Virginia publication, the first of its kind, the New England booklet is available to architects, landscape and general contractors, building committees, grounds maintenance supervisors and homeowners. Copies are available from New England Sod Producers' Association, Inc., P.O. Box 6364, Sta. A, Hartford, Conn. 06106.

The five sections in the 16-page booklet consider: Specifications for subsoil preparation where topsoil is to be added; specifications for topsoil material and application; specifications for fertilizer and lime materials and final soil preparation; specifications for sod materials and installation; and specifications for maintenance of installed sod.

An appendix recommends varieties of turfgrasses best suited for the New England area.

trimmings

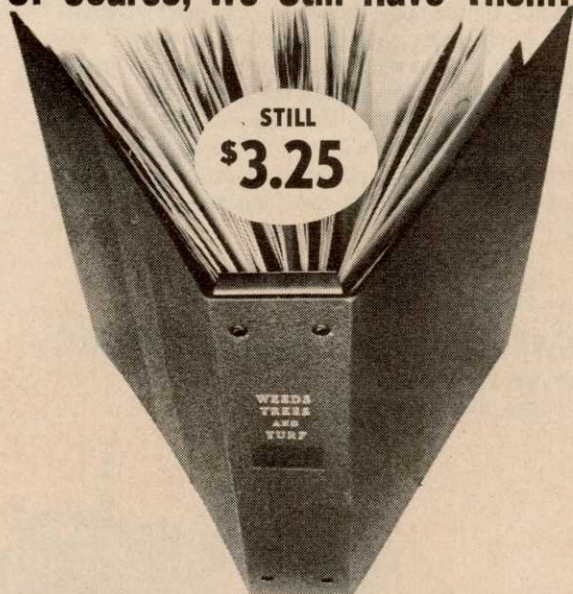


DONALD S. REEVES, 64, of Westfield, N.J., a vice-president of Asplundh Tree Expert Co., died March 22 of a heart attack. Reeves had been with the Jenkintown, Pa., tree company for 35 years and had been named vice-president and New Jersey area manager in 1956.

* * *

TOBACCO'S NICOTINE is good for something, writes nurseryman Norman H. Cannon of Bridgeville, Del. "The holly midge, *Asphendylia ilicicola*, Foote is cause for failure of berries to turn red on trees of *Ilex epaca*. After three years of failure to obtain satisfactory midge control using the latest in systemics and insecticides, one researcher disgustedly blew cigarette smoke into a quart jar containing live adult midge. Based on trials in May, 1970, 98% control of the midge can be achieved by thoroughly spraying all inside surfaces of leaves, twigs, and branches of pistillate epacas with nicotine sulfate 40% at two tea-

Of Course, We Still Have Them!



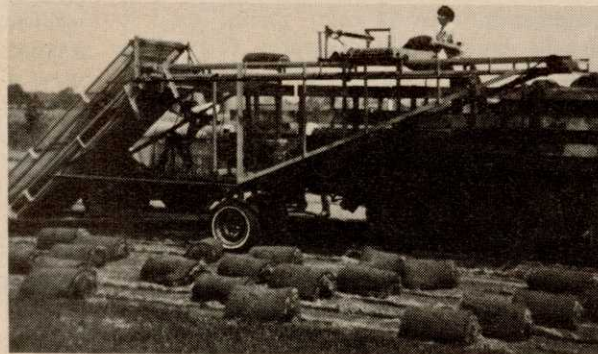
Permanent Magazine Binders

Keep 12 issues of Weeds Trees and Turf in one neat package • Magazine can be easily inserted as it arrives. • Binder protects, gives bookshelf a neat appearance.

Send check or money order to:

WEEDS TREES and TURF
9800 Detroit Ave., Cleveland, Ohio 44102

HADFIELD AUTOMATIC PICKUP SOD ROLL LOADER



Pat. Pending

1. Sod loader easily attaches to any sod truck, trailer, etc. for conventional stacking or palletizing sod.
2. No worker needed on ground when loading.
3. Will load up to three rows of sod at one time.
4. Cross conveyor runs lengthways of loader.
5. Loader may be backed rapidly on short rows.
6. Sod loader will not rut field.
7. Loader can be custom made for height and length on customer request.
8. Loader cannot be beat for speed and easy loading.
9. Any sod nurseryman cannot afford to be without at least one loader.

Hadfield Sod Roller Co.
4643 Sherwood, Oxford, Michigan 48051

Phone: Area 313 628-2000

For More Details Circle (131) on Reply Card

spoons per gallon of water (soap flakes added). Timing of spray is critical. Application must be made on the fourth or fifth day after opening of the first bloom. A second spray, two or three days later is recommended."

* * *

TO PROVE DDT ISN'T HARMFUL, a California pest control operator and his wife, Mr. and Mrs. Robert Loibl, are taking DDT pills. The dosage is said to be 300 times the average a person would consume in a normal daily diet. In fact, Loibl says, since he and his wife began taking 10 milligrams per day, he feels better, his appetite has picked up, his wife's dandruff has disappeared and her teeth and gums are healthier.

* * *

A SCHOLAR DOLLAR TOURNA-MENT is being promoted by the Virginia Turfgrass Council to raise money for the Virginia Turfgrass Scholarship Fund. The council has asked each golf course superintend-

ent to hold a "Closest to the Hole" golf tournament each Saturday during the month of June. The entry fee of \$1.00 would be forwarded to the fund.

* * *

AN X-RAY MACHINE to detect disease and insect infestations in trees has been developed by Picker Corporation. The device resulted from an idea conceived by USDA's Forest Service laboratory at Delaware, Ohio. The machine can X-ray thicknesses up to 16 inches.

HOW DO YOU WASH a dirty pine tree? In San Diego, park maintenance supervisor George Kempland went to the fire department. He had noted that firemen practiced their skills with periodic drills in a parking lot. Rather than just wasting the water, he proposed they wash trees for him while they practiced. A recent project involved washing the grit from about 100 pine trees in Presidio Park. The washing, said Kempland, is to reduce the possibility of pollution damage.

index to advertisers

Agtronics Mfg. Co.	58
Amchem Products Co.	14
Applied Biochemist, Inc.	22
Asplundh Chipper Co.	31
Bowie Industries, Inc.	25
Brillion Iron Works, Inc.	55
Buckner Industries, Inc.	3rd Cover
Buffalo Turbine	54
Chanderlin Seed Co.	32
Conwed Corporation	5
Diamond Shamrock Co.	21 and 35
Dow Chemical Co.	6
Du Pont Company	2nd Cover
Engler Mfg. Co.	50
Fargo Foundry	15 and 16
Geigy Agricultural Chemicals	29
Hadfield Sod Roller Co.	58
Herd Seeder Co., Inc.	30
H. D. Hudson Mfg. Co.	53
Hyacinth Control Society	51
Hypro, Inc.	24
Jacklin Seed Co.	51
John Bean Div., FMC Corp.	23
Lakes Supply Co., Inc.	40
Lindig Mfg., Inc.	56
Lofts Pedigreed Seed, Inc.	4th Cover
Miller Tilt-Top Trailers	43
Mitts & Merrill, Inc.	59
Mobile Aerial Towers	44
F. E. Myers & Bro. Co.	39
National Mower Co.	20
Niagara Chemical Div., FMC Corp.	41
Omark Industries, Inc.	3
Ousley Sod Company	60
Rain Jet Corporation	30 and 56
Ryan Equipment Co.	45
Selma Trailer and Mfg. Co.	40
Servis Equipment Co.	33
Shell Chemical Co.	37
Stihl American, Inc.	13
Union Carbide Corp.	11
Velsicol Chemical Corp.	8 and 9
Vermeer Manufacturing Co.	57
Wayne Manufacturing Co.	17

Mitts & Merrill Brush Chippers For...

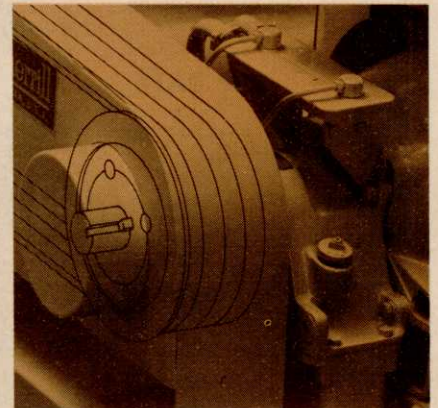


better design... more efficiency

For more than 115 years Mitts & Merrill has been making specialized machinery for industry. A major part of our business is equipment to reduce scrap and waste. This experience is incorporated into design features on our brush chippers that result in higher efficiency and longer, trouble-free service for you. Only Mitts & Merrill brush chippers offer features like these:



Staggered knife pattern for smoother cutting action. Mounted on an all-steel cylinder that, even without an external flywheel, is heaviest in the industry. Each cylinder revolution gives more cuts, produces smaller chips of uniform size. Self-adjusting knives are reversible; give twice the service between sharpening.



Optional torque converter isolates engine and transmission from cutting shock to minimize maintenance. Makes operation virtually fully automatic; increases operator productive time. Available on all models.

Plus...

- **Positive safety-lock pin** for greater operator safety
- **Swing-away, folding feed chute** protects cutting chamber; allows instant access and increases maneuverability
- **Heavy duty construction** includes coil spring, torsion-type suspension, and box tubular steel frame.

mitts & merrill



Dept. WT-54, 109 McCoskry St., Saginaw, Michigan 48601