

# meeting dates

S	M	T	W	T	F	S
	1	2	3	4	5	
6	7	8	9	10	11	12
13	14	15	16	17	18	19
20	21	22	23	24	25	26
27	28	29	30	31		

**Florida Nurserymen and Growers Association** annual convention, Deauville Hotel in Miami Beach. May 13-15.

**Southern California Turfgrass Institute** at California Polytechnic Institute, Pomona. May 18-19.

**Rutgers University Turfgrass Research Field Day** at 10 a.m. at New Brunswick, N.J. June 8.

**Western Chapter of the International Shade Tree Conference** annual convention, Del Webb Townhouse, 9th & Market Sts., San Francisco. June 20-23.

**American Association of Landscape Architects** annual meeting, Portland, Ore. June 20-24.

**Grassland '71** fourth annual field day. Eugene, Ore., Municipal Airport. June 23-27.

**California Landscape Contractors Association** at King's Castle, Lake Tahoe. June 23-27.

**Michigan State University Sod Production Field Day** at East Lansing, June 29.

**Shade Tree Meeting** at the Ohio Agricultural Research and Development Center at Wooster. July 7.

**American Association of Nurserymen** convention, Statler Hilton Hotel, Dallas, Tex. July 17-21.

**1971 Midwest Nursery and Landscape Exposition** at D. Hill Nursery, Dundee, Ill. July 25-27.

**United States Department of Agriculture Turfgrass Field Day**, Plant Industry Station, Beltsville, Md., Aug. 4.

**47th International Shade Tree Conference** at the Queen Elizabeth Hilton Hotel in Montreal, Quebec, Canada. Aug. 8-12.

**American Society of Agronomy, Crop Science Society of America and Soil Science Society of America** concurrent meetings in New York City, Aug. 15-20.

**Penn State Turfgrass Field Day** at the Joseph Valentine Turfgrass Research Center, University Park, Pa. Aug. 25-26.

**Michigan State Turfgrass Field Day** at the Crop Science Field Laboratory in East Lansing. Sept. 9.

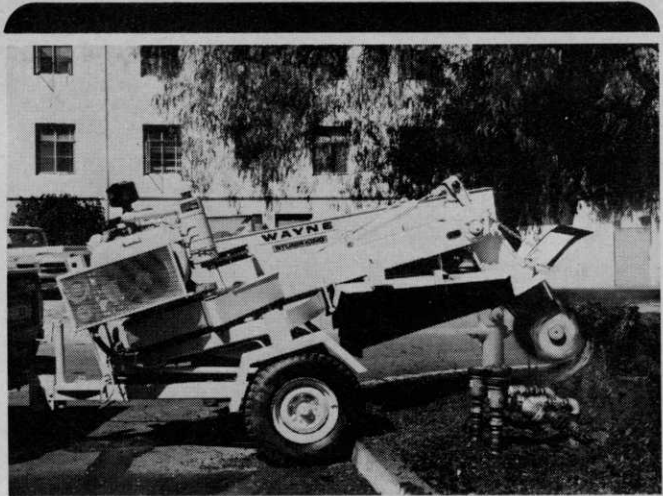
**Alabama-Northwest Florida** annual turfgrass short course in cooperation with Auburn University, Auburn, Ala. Sept. 9-10.

**Florida Turf-Grass Management Conference**, Pier 66, Ft. Lauderdale. Sept. 19-22.

**Midwest Regional Turf Foundation** field day, Purdue University, Lafayette, Ind. Sept. 27.

**30th Annual Short Course for Roadside Development**, Columbus, Ohio. Oct. 4-8.

**Society of Municipal Arborists** seventh annual meeting at the Empress Motel, Asbury Park, N.J. Oct. 6-8.



## stump eater!

The new WAYNE STUMP KING<sup>®</sup> is here . . . it's a hungry machine! STUMP KING<sup>®</sup> chews up more stumps faster than any other method of stump removal. HIGH PRODUCTIVITY is achieved by quick set-up on the job and unmatched cutting range. Choice of 2 models — 37 HP and 65 HP.



## brush eater!

Team up with WAYNE BRUSH CHIPPERS . . . They can solve your brush disposal problems with high speed and economy . . . economy provided by exclusive 6 sided bed knife adding 50% more life than a conventional 4 sided knife. Multiple safety features assure maximum protection for your operating personnel.

Write for money saving details:



**WAYNE MANUFACTURING CO.**  
1201 E. Lexington St., Pomona, California 91766  
**SALES, PARTS AND SERVICE WORLD WIDE**