



Oak seedlings were four feet high by August '70.



Spot planted oak seedlings on John F. Kennedy Memorial Highway emerged in the spring of 1969.

cases, produce a satisfactory stand of woody plants.

Establishment of many shrub and tree species may be possible by direct seeding. Additional tests are needed and will be carried out. A beginning has been made and when the final plantings have been evaluated, direct seeding of woody plant material should be a commonplace.

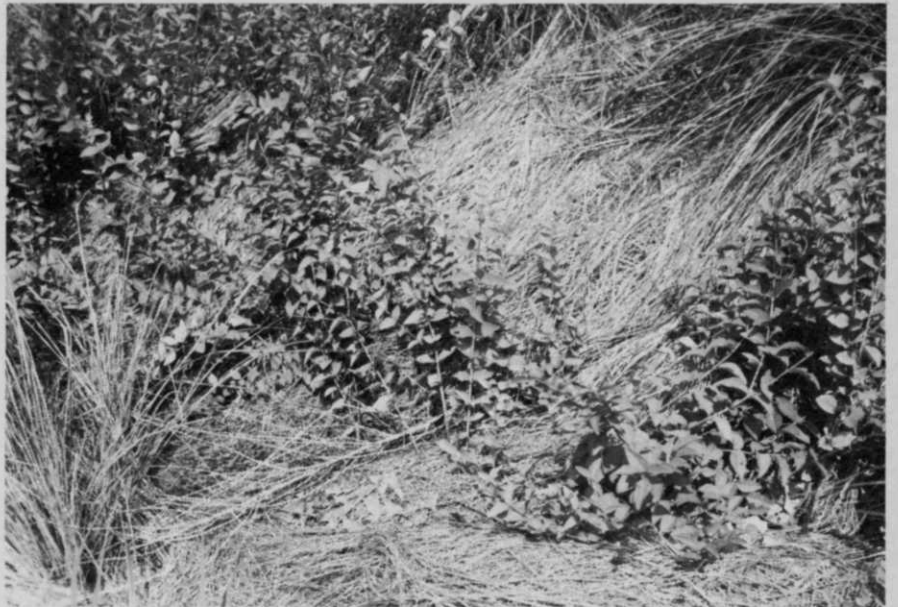
Adapted from a report by H. W. Everett, Charles R. Anderson, Gary V. Schultz, and Richard Dudley, Agricultural Research Center, Beltsville, Md., presented by Mr. Everett at the Twenty-ninth Ohio Roadside Development Short Course at Columbus, Ohio.

## Toro Purchases Viking Corporation

Toro Manufacturing Corporation at Minneapolis, Minn., has just purchased Viking Manufacturing Corporation of Manhattan, Kan.

Viking makes a roller blade line of turf-conditioning equipment, a tool which handles various cultural practices from rough grading through seeding and fertilizing. The new addition to Toro's line of mowers and others turfgrass care equipment will be known as the Toro Landscaper. It will be produced in Toro's Minneapolis plant and marketed through Toro's Turf Products Division.

Toro's president, David T. McLaughlin, in announcing the purchase said that key markets sought for the new machine would include golf courses, parks, schools, cemeteries, landscape contractors, and sod growers.



Coralberry seedlings grow through weeping lovegrass cover — companion species. Photo made August 1970.

**CERTIFIED LAWN GRASSES  
READY NOW FOR  
IMMEDIATE DELIVERY**

*Guaranteed quality  
— as near as your  
phone.*

OUSLEY SOD COMPANY has  
all varieties of lawn grasses.  
Bermudas, Zoysias, Floratine,  
Centipede.

**Ousley** SOD CO.

**WE WILL SHIP TRUCK  
LOAD LOTS ANYWHERE**

4291 N. DIXIE HIGHWAY / POMPANO BEACH, FLA. 33064 / PHONE 942-6030