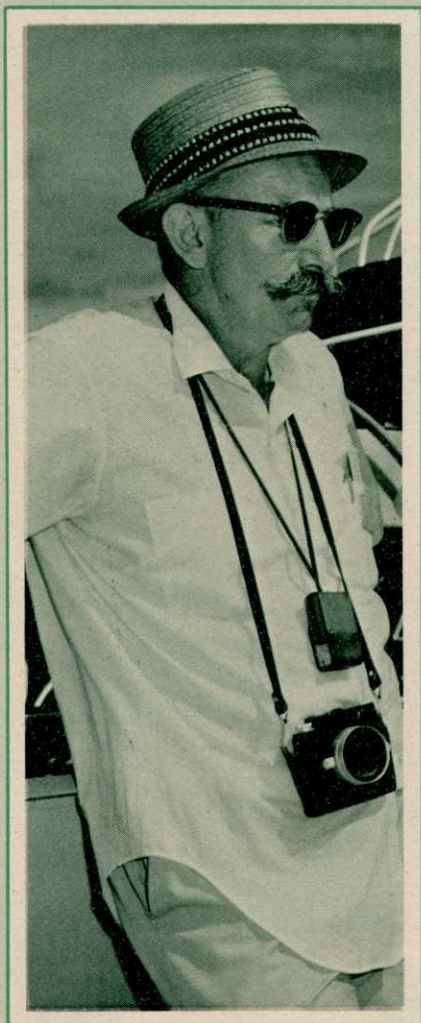


AN INDUSTRY GROWS

By John E. Gallagher

Amchem Products, Inc., Ambler, Pa.



Gallagher: We now realize the necessity of a total environment concept."

GOING BACK beyond the introduction of 2,4-D to compare the early arsenal of water weed killers with the herbicides available today, it seems a little shocking to see that we still use sodium arsenite, copper sulfate, and aromatic solvents. This is not because they are perfect herbicides and no new ones have come along, but rather an indication of changes in policy to prevent too-rapid introduction of herbicides into our waters. There is a great deal of research under way—work that reflects the cooperative action of many agencies. Federal, state, and industry workers are quite often directly involved in a single project because the multiple-use concept of water utilization requires multiple responsibility for finding answers.

Recent renewal of USDA-ARS activity in aquatic weed control indicates the expanding need for answers beyond those of early work with irrigation and drainage areas of the United States. The amount of work was increased tremendously in 1957 when the Ft. Lauderdale, Florida, facility was established and research personnel were shifted to other weed problem areas. ARS soon found itself deeply involved in all phases of aquatic weed control.

The U. S. Army Corps of Engineers, responsible for keeping navigable waters open, had long been battling water hyacinth. In 1958 a bill authorizing an extensive aquatic plant control program involving eight states released funds for joint research projects and was responsible for the movement of research people into the field of aquatics. Another agency, Tennessee Valley Authority, suddenly has found itself the major experimenter in Eurasian milfoil control, putting increasing manpower and hours into resolving the ever-expanding problem in the chain of TVA lakes.

U. S. public health and water pollution agencies are becoming involved either directly in monitoring programs or indirectly through grant-in-aid programs such as the work being conducted by Dr. John Lawrence at Auburn University in Alabama. This work is concerned with the relationship of weed growth

and water pollution. Perhaps the catalyst in the whole resurgence of interest in aquatic weed work is the developing philosophies of the new Environmental Protection Agency. The concern over what is going into our waters is requiring far more complex tests now than ever before. We in industry have to account for residues in waters as well as in fish. We are now concerned with effects on fish production and the total food chain. We are doing research to investigate possible effects on crops irrigated with treated waters and may concern ourselves with stock watering and human consumption.

Submersed Weed Species

Early aquatic weed control work was primarily with pondweed species in western irrigation canals. The species most frequently subject to test was sago pondweed (*Potamogeton pectinatus*).

Recently (that is, over the past ten years), aquatic weed research has also been oriented toward other submersed species. The rapid spread of Eurasian milfoil (*Myriophyllum spicatum*) throughout the United States, and the more regional problem of Florida elodea (*Hydrilla verticillata*) has caused a marked increase in the number of projects proposed and carried out.

The problem of Eurasian milfoil has been receiving the greatest amount of attention judging by the scale and number of agencies involved. TVA, U. S. Army Corps of Engineers, USDA, the U. S. Department of Interior, the Florida Game and Fish Commission, as well as many individual states, are working to control Eurasian milfoil.

The rapid spread of milfoil following its normal pattern of unobtrusive introduction, a 3- to 4-year period of establishment, and a sudden crisis situation, has been responsible for several crash programs attempting to stem the tide. Perhaps the most fortunate characteristic of milfoil is its susceptibility to 2,4-D, established early in the USDI research program conducted by Steenis in the late 1950's. Recent efforts have been directed toward developing new application methods

(Continued on page 18)



I Am Curious {green}

You, too, should be curious about this magnificent young beauty among lawn grasses. 0217® Brand Fylking Kentucky bluegrass is a great green because it greens up earlier in spring, stays green longer in fall. Curiously, Fylking thrives when cut at ¾ inch (even as low as ½ inch) making possible backyard putting greens with no special care required. Its curious name, Fylking, refers to its quality of dense root growth that crowds out weeds. It's a Swedish word because Fylking was discovered in Svalof, Sweden, and developed in America. Internationally tested, Fylking has proven superior over a 12-year period. Fylking is more disease-resistant, produces no seedheads, takes heavy traffic and resists drought. Get curious about this wonderful lawn. Available now at local wholesale seed or sod distributors.



Another fine product of Jacklin Seed Co., Inc.

For More Details Circle (111) on Reply Card

Bitting (from page 14)

at a time. An interval of at least a week should be allowed between treatments.

EQUIPMENT

The application pipe was a ten foot length of ½ inch thin wall electrical conduit with three inches of the outer end curved down to aid injection and shed trash.

Chemical was educted into the spray system as opposed to a pressure activated system; metering was accomplished by an orifice plate in the eductor line. Various apertures may be used to accommodate the desired output and boat speed. Gasoline may be used to calibrate the equipment.

MISCELLANEOUS OBSERVATIONS

Herbicidal activity of Acrolein was much slower than was normally observed in full volume treatment even though summer temperatures prevailed.

In several instances, small feeder canals were treated on one margin only. Filamentous algae were removed and the margin remained clear for two to three months while the opposite edge supported the usual heavy growth.

The fact that Acrolein requires a relatively short contact time, and degrades rapidly, makes it useful for marginal strip use.

We hope that research will soon bring a compound into practical use that will be non-toxic to fish as well as an effective control agent, but until then, Acrolein and the strip method can be utilized in many problem situations.

Gallagher (from page 12)

and formulations. Ease of applying 2,4-D granules was improved by Amchem's Spreader Disc for helicopters and the West Point Products Aeriblower for shoreline boat application. Last year, based on previous test plot work, the dimethyl amine form of 2,4-D was applied large scale during the month of May with considerable success. Steenis (1) has been utilizing fluctuating tidal movement to minimize operational difficulties. In its efforts to control milfoil in 1969 the Engineers utilized both helicopter and boat blower systems for applying granular 2,4-D. In Florida a multiple-agency operation organized a large-scale test program and used everything from an airboat to a helicopter to apply a wide range of herbicides and formulations to control Eurasian milfoil

which had become a potential hazard to its resort spring attractions. A number of materials were effective, but all are more expensive than 2,4-D. Although 2,4-D is a partial chemical answer to this particular species, milfoil spreads so fast that no single approach is adequate. The 15 papers presented at a one-day TVA conference on water-milfoil research and control gives an idea of the scope of research activity by personnel involved with the species.

Elser (2), responsible for directing the operational weed control work in Maryland, reports that the decline of tremendous acres of Eurasian watermilfoil in the Chesapeake Bay could be pathological. Two diseases, Lake Venice and Northeast (names for convenience as they have not yet been positively identified and classified) were generally found in the regions of large-scale milfoil decline. Elser reports that Suzanne Bayley of Johns Hopkins University determined that the Northeast disease organism is a filterable agent, possibly a virus. A small controversy exists in the minds of several researchers as to whether the "disease" is in reality a response to high salinity associated with salt water intrusion which occurred over a period of drought years.

The amount of work on other submersed species is generally related to problem size and rate of increase. Florida elodea is rapidly becoming a major weed problem in Florida waters. Blackburn (3) found that acrolein, aromatic solvents, copper sulfate and a diquat-copper sulfate mixture provided temporary control, but the diquat-copper sulfate is the only treatment not highly toxic to fish. Other work on elodea reported over the past few years shows copper sulfate mixtures of copper sulfate and diquat, diquat plus endothall, and blackstrap molasses added to phenoxy compounds controlled this species. Ware (4) reported that 100 lb. of copper sulfate per surface acre provided economical control of elodea. Larger crystals produced better control. Foret (5) used blackstrap molasses as a source of acornitic and itaconic acid and glucose. These materials added to phenoxy compounds increased control of elodea and other submersed species. In the laboratory at Ft. Lauderdale where the nutritional and reproductive studies of Florida elodea simulate field conditions, Weldon (6) found that the WASM formulation of endothall doubled or quadrupled effectiveness in field trials.

(Continued on page 34)

WEEDS TREES and TURF



Most common method of aquatic pesticide application is airboat.

Gallagher (from page 18)

Sago pondweed and other potamogeton species still constitute a severe problem in the waters of the western irrigation systems. The partially-satisfactory aromatic solvents with their inherent danger to fish are being used, but search for a better solution continues. New herbicides are constantly being screened and new application techniques have been developed to make the current materials more same. Work pertaining to nutritional requirements for establishment and the physiological aspects of temperature and planting depths is under way on several submersed weed species. Bruns (7) showed that acrolein applied at 0.6 ppmw volatilized as the treated waters moved downstream. Calculated losses were equal to 22% at one mile, 53% at 3 miles and 98% at 19 miles. Weed injury was still occurring at mile 18. Hathrop (8) reported that a low-rate long-contact period of acrolein application had been successful in the Columbia River Basin Project. Concentrations of 0.1 ppmw over a 48-hour period provided excellent control of sago pondweed in canals carrying 300 CFS and in laterals carrying 150 to 300 CFS.

Copper sulfate is being used in a similar manner to control higher plants as well as algae. Bartley (9) controlled both sago and leafy pondweed over several miles of ditch with daily applications of 0.5 ppmw copper sulfate. A 6- to 8-week treatment period was needed to produce the desired effect. Of importance here was the lack of copper build-up in canal-bottom soils. Apparently pondweeds extract copper efficiently from treated water. With a single dump application of 411 lb. in a 411 CFS flow canal (standard algae control rate is 1 lb./CFS) Bruns (7)

found that 95% of the copper in 23 miles of canal was sorbed by suspended particles which dropped to the bottom and re-released the copper. No build-up occurred. In neither test were fingerling trout injured.

Riemer (10) partially filled a void in the knowledge of the action of copper in his work dealing with the behavior of copper sulfate in small ponds. He verified the ability of plants to keep the copper suspended when he showed that a heavy bloom of algae reduced the amount of copper in the water. He also showed that larger granules which sink to the pond bottom permit less copper sulfate to get into solution than the theoretical expected amount, yet at the same time that part which goes into solution mixes rapidly throughout the water system. Riemer's hypothesis that the copper applied as large granules may be adsorbed on the bottom muds possibly explains why Ware felt he had achieved more effective control with larger granules. Perhaps concentration at the stem-root zone permitted greater adsorption by the plant.

Much additional work on the control of submersed species is in the literature and more is yet to be reported. This work varies from cultural characteristics of individual species to broad-spectrum response to herbicides. Riemer (11) determined that under New Jersey conditions cabomba (*Cabomba caroliniana*) over-winters primarily as vegetative portions of the plant. No viable seed was produced either in the laboratory or in field experiments. In the laboratory test optimum growth occurred at pH 6.0 in aerated water with low levels of calcium.

In terms of new chemicals or new uses for old chemicals total water treatments of diuron, endothall di-

hydroxy aluminum salt, Fenac, and dichlobenil control submersed species. Walker (2) reported that diuron in gelatin capsules weighted with sand controlled cladophora and spirogyra in cold-water ponds for three months. Pierce (13) and Hambric (14) had excellent control of a wide range of submersed species with diuron. Pierce indicated that at 0.6 to 1.0 ppm myriophyllum, eleocharis, and acicularis were resistant. Most of the filamentous algae appeared susceptible. Hambric found that 2 lb./surface acre controlled a wide range of species, dispersal throughout the water system was excellent, and apparently there was immediate absorption with resultant kill since extensive water exchange did not reduce the effectiveness of the treatment.

In current Amchem research Fenac applied at the 1 to 5 ppmw needed to provide disappearance information for label purposes controlled many submersed aquatic species, particularly pondweed, and also the fringe growth of cattails (*Typhus* spp.) commonly found around ponds.

Dichlobenil studied more for the control of emersed than for submersed species was applied pre-emergence to Illinois ponds in December by Hildebran (15). Rate of 16 to 20 lbs. prevented the growth of *Potamogeton pectinatus*; lower rates did not control *P. foliosis*. Yeo (16) knocked down American and curly-leaf pondweed, small pondweed, elodea, cattail, and cladophora in four weeks with 10 lb./A.

Regarding endothall, Patterson (17) refers to the dihydroxy aluminum salt as a particulate carrier which brings the herbicide in direct contact with aquatic weeds. Cortell (18) confirmed the advantage of its direct and prolonged contact with the plant.

Although this is a paper dealing with aquatic weed control research in the United States, the work of Wile in Ontario and Thomas on Prince Edward Island should be included. In both instances the work was stimulated by use demands. Ontario Water Resources Commission maintains aquatic weed research studies for answering the many requests for assistance in maintaining provincial farmponds and recreation waters. Thomas, Fisheries Research Board of Canada, worked out the details for 2,4-D granular control where eelgrass (*Zostera marina*) had become a severe problem in maritime province oyster beds.

The association of aquatic weeds and high nutrient levels in polluted

waters has stimulated interest in that relationship. Investigating the effects of pollution on aquatic growth and development, Denton (19) selected three species: alligatorweed (*Alternanthera philoxeroides*), parrotfeather (*Myriophyllum brassiliense*), and water hyacinth (*Eichhornia crassipes*) growing in polluted and unpolluted waters. The plants were analyzed for ash, carbon, nitrogen, phosphorus, calcium, magnesium, potassium, and sodium. Samples of water and bottom muds were analyzed for the same elements. Plant ash varied with water hardness but the carbon content differed little with the environment. Plant nitrogen, magnesium, and sodium varied considerably with the concentration of these elements in the water and bottom soils. Riemer (20) analyzed 30 species of aquatic plants and their surrounding waters, checking 12 chemical elements. The data was recorded but not interpreted. Ryan (21) reported the effects of fertilization on the growth and mineral composition of anacharis, two myriophyllum species, and *Potamogeton pulcher*. In a two-year study the four species showed unlimited consumption of nitrogen, phosphorus and potassium when fertilized. Anacharis and *Potamogeton pulcher* fertilized showed significantly higher yields than in control pools. Unfertilized *Myriophyllum spicatum* produced the greater yield. *Myriophyllum heterophyllum* responded to fertilization in 1967, but not in 1968. This effect of excess nutrients was evident at Ft. Lauderdale where it was found that high levels were toxic to hydrilla.

The current indication is that more work will be done on this aspect, stimulated in part by attempts to utilize aquatic vegetation as a feed supplement, and also the possibility of utilizing aquatic plants to trap excess nutrients in runoff water.

Otto (22) used nitrogen and phosphorous at two enrichment levels but did not increase the total vegetative mass of *Potamogeton nodosus* or *P. pectinatus*. The two species have low nutrient level requirements which are met primarily by the parent vegetative propagule.

Emerged Weed Species

In the United States the most important emerged aquatic weed species are water hyacinth (*Eichhornia crassipes*) and alligatorweed, both serious problems in navigable waters. Research for controlling these weeds is also important because mats of them provide ideal mos-

quito-breeding conditions. The phenox compounds seem to offer the best control, 2,4-D for water hyacinth and 2,4,5-TP (silvex) for alligatorweed.

Among new chemicals, in the water hyacinth work by Weldon and Blackburn (23) 3 lb./A ametryne was very effective. Associated residual studies showed that at that rate ametryne remained in the water in the treated area for 32 days. The problem of drift to susceptible crops precipitated work with ametryne. To avoid the hazard of drift and also of volatility Ball shifted to an oil-soluble amine form of 2,4-D applied through the Microfoil boom for treating hyacinths in the Loxahatchee Reservoir, situated in the center of the vegetable growing area around Lake Okeechobee in Florida.

Alligatorweed is still included in test programs because we do not have a herbicide that is satisfactory in all situations. Weldon and his co-workers (24) found that 5 and 10 lb./A of granular dichlobenil controlled rooted emerged plants, but not floating ones. Spencer (25) reported that 12 lb./A of silvex plus 3 lb. ai of amitrol-T maintained 40% control of alligatorweed after a 12-month period. In an all-out attempt

to eradicate alligatorweed in a California test, Pryor (26) achieved complete kill with a drench of 1 qt. of Vampam plus 1 gallon of weed oil in 25 gallons of solution per 100 sq. ft.

Although a few years ago 8 lb./A of 2,4-D seemed to be controlling water chestnut (*Trapa natans*), re-surgent and spreading infestations are now requiring further research. Results of a test program started in 1965 by Steenis and Elser (27) indicate that mixtures of 2,4-D and dicamba applied to immature developing seeds cause these to rot. Seeds treated at maturity are sterilized. Treatments made before flowering had no effect on the seed viability or development.

In the lily family a two-year test program conducted by Weldon and Blackburn (28) showed that 4 lb./A of dichlobenil applied in summer to early fall produced 90% control of fragrant white waterlily (*Nymphaea odorata*) and was more effective than in 8 lb./A rate applied during the winter. Taylor (29) agreed with Weldon and Blackburn on white waterlily, but suggested that 10 lb./A be used for the complete control of spatterdock (*Nuphar advena*). The best applica-

CONTROL without EUTROPHICATION



Aqua-Trio controls aquatic weeds without promoting cultural eutrophication . . . by physically removing them.

Doesn't it make sense?

H-650 — HARVESTER — cuts and stores weeds in live bed hold.

T-650 — TRANSPORT — mates automatically with Harvester . . . transfers load automatically for trip to shore.

S-650 — SHORE CONVEYOR — automatically transfers load to waiting truck.

AQUAMARINE CORPORATION

1116 Adams St., WAUKESHA, WIS. 53186 Phone: 414-542-9491

tion time in the southeastern states was during the period of active growth. Comes and Marrow (30) recorded 99% control of white waterlily three months after Aril treatment with 7.5 and 15 lb./A of dichlobenil. Riemer (31, 32) investigated the effects on spatterdock of varying frequencies of defoliation, of a combination of defoliation plus 2,4-D, and of the effects of 2,4-D plus ETHREL (2-chloroethylphosphonic acid). He reported that defoliation depleted food reserves, the greater loss being associated with the greater number of prunings. Three trimmings plus 40 lb./A 2,4-D BEE provided complete kill with no regrowth the year following treatment. The addition of ETHREL to 2,4-D as a tank spray mix or as a separate application using 4 lb. of 2,4-D plus 6000 ppm ETHREL provided complete knockdown. A later check of the plot area revealed that the rhizomes from the treated area were unhealthy and spongy-looking, while those from the check plots and 2,4-D alone were healthy and sprouting.

Ditchbank Weed Control

Ditchbank weed control retains high research priorities because of

the intensity of irrigation and drainage area problems. The USDA-ARS aquatic and noncrop weed control groups are working on the major weed species such as reed canarygrass (*Phalaris arundinacea*), carax and hardstem bulrush (*Scirpus acutus*). Much of the work is investigating physiological aspects. The growth habits of problem plants and their place in the succession of vegetation as well as their competitive characteristics are being studied quite intensively. Of particular importance are the ecological studies which show changing weed populations.

Discussing the joint problem of reed canarygrass control and plant succession Hollingsworth and Comes (33) showed that applications repeated up to five times produced better kill of reed canarygrass than single applications of a higher rate. They also reported that amitrol-T was superior to amitrole alone. Plant succession favored establishment of bluegrass and redtop over a naturally-occurring weed mixture. Oliver (34) noted excellent control of annual broadleaf weeds and good grass tolerance with 0.25 lb./A of picloram and with a 1.4 lb./A of fenac on irrigation rights-of-way.

The effectiveness of these materials suggested a 2-year weed control period might be possible. Kemper (35) controlled headstem bulrush with treatment rates of 2.2 and 4.4 lb./A methanearsonate. Spring treatments were superior to those in mid-summer and early fall. The spring treatment showed less than 10% regrowth in the second year. McHenry (36) verified Kemper's results but preferred mid-summer application. In McHenry's test, 1 lb./A of DSMA was second to the 2 lb. rate of a low volatile ester of 2,4-D. 2,4-D is an effective treatment, but drift is an inherent danger to susceptible crops.

Herbicide Residues

The question of pesticide residues is becoming the most critical aspect of aquatic weed control. With chemical methods the concern is the herbicide itself. With mechanical methods it is the re-release of nutrients into the water, creating more favorable environments for weed re-establishment. We must know the degradation and disappearance time of any herbicide placed in water, and also residues in fish and bottom organisms which make up the biological food chain.

CLEAN RIVER LAKE WATER

Enjoy water sports again! Cut and remove underwater weeds! Patented aquatic weed cutter and rake. Use on fishing boat—LOW COST



Dept. 91

AIR-LEC Industries, Inc.

3306 COMMERCIAL AVENUE • MADISON, WISCONSIN 53714

"OUR 50th YEAR"



47th CONVENTION of the

International Shade Tree Conference, Inc.

This is an open meeting especially for commercial, municipal and utility arborists, but also for all others interested in the tree care industry. Four days of educational sessions; scores of speakers. Entertainment for the family; special programs for the women and children. Post convention tours. Equipment displays and demonstrations. For more information, contact E. C. Bundy, executive secretary, P.O. Box 71, Urbana, Ill. 61801. Phone AC 217 365-2032.

AUG. 8-12, MONTREAL, QUEBEC, CANADA
Headquarters: Queen Elizabeth Hotel

Averitt (37) recorded a decreasing herbicide concentration over a 22-day period when 2,4-D dimethylamine salt was applied to Louisiana waters. Initial concentrations went from 189 and 269 ppm to 19 and 10 ppm. Daly, Funderburk and Lawrence (38) showed a differential disappearance of paraquat, diquat, and 2,4-D BEE applied to Lake Seminole for the control of Eurasian water milfoil. There was only a trace of paraquat and diquat after 24 hours but the 2,4-D formulation lasted through the 7-day sampling period. All materials controlled the weed. Paraquat residue was higher in soil and milfoil than in the water. The 2,4-D formulation prevented reinfestation for a much longer time. This data in part verifies the earlier work of Frank (39) who found that 1.33 ppm initial concentration in a still pond was reduced to 0.019 in 19 days and 0.001 ppm in 36 days.

The USDA-ARS group is most active in this aspect of aquatic weed work, having endothall, dichlobenil, 2,4-D, amitrole, TCA, ametryne and acrolein under test either as direct application to water or as indirect application associated with ditchbank spraying. Dyes have been used to



Sheer volume is a major problem with mechanical harvesting of aquatic weeds.

study channelling as well as stratification of substances introduced in to canal waters. The dilution factor is of most concern in moving waters. Dyes have also been used by Steenis and others in determining flow currents associated with using diquat and 2,4-D amine salts in back coves of Chesapeake Bay tidal flats.

The second aspect of herbicide residues associated with aquatic weed control pertains to those waters used for crop irrigation. Two

USDA facilities, both in the Western Irrigation Region, are studying the effects on crops of known quantities of herbicides applied in fixed volumes of irrigation through both sprinkler and furrow methods. The crops being studied represent the crop grouping established by the U. S. Food and Drug Administration and include sugar beets, beans, corn, wheat, and potatoes. These experiments are generally carried through to yield to determine cumulative ef-

MOVING?

Changing Your Address?

If so, notify our circulation department right away to be certain the magazine reaches you at your new location. The Post Office won't forward your copies. So when you write us, make it at least three weeks in advance of your moving date, and include your old address, as well as the new one. We'll see you don't miss a single issue.

Send old and new address information to:

WEEDS TREES and TURF

Circulation Department
9800 Detroit Ave., Cleveland, Ohio 44102



THIS ELM WILL LIVE



—with your help and ours

Our research scientists have now found an effective beetle control . . . a preventative for Dutch Elm Disease. More work is required before it is ready for commercial use — in less than a year if enough funds can be raised. Will you help finish the job? Join Elm Research Institute now and save the elm from the fate of the chestnut tree. For progress report, and color film free on loan, write:

ELM RESEARCH INSTITUTE
60 W. Prospect Street
Waldwick, New Jersey 07463

FOR NON-CROP USES

Water from treated lakes or ponds may be used to irrigate turf, fairways, putting greens and ornamental plants.

This sticker is an extension of CUTRINE's registered label in several states and appears on all CUTRINE containers sold within those states.

It was specifically obtained by the manufacturer to overcome misgivings regarding use of CUTRINE treated water for watering greens, fairways and other non-crop areas.

A New Dimension For . . .

- Groundskeepers
- Superintendents
- Caretakers
- Anyone concerned with water and its surroundings

CUTRINE

U.S.D.A. Reg. No. 8959-1

Today's Safest, Most Effective Algaecide

Circle our number for information
APPLIED BIOCHEMISTS, INC.
P.O. Box 91900
MILWAUKEE, WISCONSIN 53202

fects as well as immediate formative effects. At the present time acrolein, silvex, 2,4-D, fenac, amitrol-T, picloram, and pyriclor have been tested either by Bruns at Prosser, Washington or by Hodgeson at Bozeman, Montana.

Biocontrol of Aquatics

Because of the lack of specialists, it appears that aquatic weed research people are having to wear several hats.

In line with this philosophy is the biocontrol work under way at the USDA station at Ft. Lauderdale, Florida with snails; a tilapia study in California; and a manatee and beetle program in Florida.

Reviewing the animals which were under study as aquatic phytophagous agents Butler (40) referred to insects, molluscs, fish, ducks, and manatees.

Florida is "where the action is" at the present time. In this state the snail, the flea beetle, and the manatee have been utilized to control submersed weeds and alligatorweed. Blackburn and Andres (41) indicate that the snail *Marisa cornuarietis* L. is quite hardy, surviving in a temperature range of 48 to 100° F, can live in polluted waters, and can tolerate a salinity of 2500 ppm. The snail feeds quite actively and is indiscriminate in its eating habits. This is an advantage in that it will keep all vegetation down. *Marisa* also feeds on disease-bearing snails without transmitting diseases harmful to man, an additional benefit. The disadvantage is that *marisa* could feed on aquatic crops, such as rice, waterchestnut, and watercress. Perhaps the greatest problem will be producing enough snails to be of value in the area where they will adapt. Field tests show that fairly high populations are needed—8000 per acre stocked in Florida cleaned up ponds and kept them clean over a two-year period.

The so-called mighty mite of biocontrol is the flea beetle (*Agasicles* n. sp) with its single-minded food habit. It apparently lives only on alligatorweed. This insect, imported through the USDA-ARS Entomological Department from Argentina, has been released in the United States at several locations. Zeiger (42) reported successful introduction to Florida waters. He indicates the two characteristics needed—survival and rapid adaptation—were met with apparent satisfactory control of alligatorweed. Blackburn and Andres suggest that the beetle might not be the final answer since

it does not prove effective in the Savannah, Georgia, program.

Mechanical Weed Control

The primary objection to mechanical control in the past has been the fact that the methods used frequently spread species which propagate vegetatively. The early collection and compressing of weed masses also returned the nutrients to the water, ultimately supporting a greater weed population. This is apparently changing. Bryant (43) discussed a new and more efficient harvester system which transports the weed mass to the shore and hauls it away. He also noted that a Wisconsin state law now requires weed removal in any weed-cutting operation. The Water Witch uses high pressure to blast weeds from swimming areas, but makes no provision for weed collection and site removal.

Conclusion

To sum it all up, one must say that there is a tremendous amount of aquatic weed research under way. More importantly, understanding of aquatic weed control is progressing to the point of our realizing the necessity of a total environment concept. Research is no longer a shotgun or hit-or-miss concept involved with only a single aspect of the problem. The realization that our natural resources will not last forever at the rate we are using or destroying them is making us all conscious of the need to act as part of a total environment rather than for individual needs alone.

REFERENCES

1. Steenis, J. H. 1969. Tidal dispersal of 2,4-D for controlling Eurasian water-milfoil in Chesapeake Bay. Proc. NEWCC 23:375.
2. Elser, H. J. 1968. Observations on the decline of watermilfoil and other aquatic plants, Maryland 1962-1967. Proc. NEWCC 22:487.
3. Blackburn, Robert D. and Lyle W. Weldon. 1969. Control of *Hydrilla verticillata*. Proc. SWC 22:317.
4. Ware, F. J. and J. D. Jorman. 1967. The results of selected aquatic herbicides on elodea in South Florida. Proc. SWC 20:290-293.
5. Foret, J. A. 1967. Response of *Elodea canadensis* to treatment with phenoxy herbicides and organic acids. Proc. SWC 20:288-289.
6. Blackburn, Robert D. and Lyle W. Weldon. 1969. A new approach to aquatic weed control Proc. SWSS 22:315.
7. Bruns, V. F., J. F. Nelson and C. C. Coutant. 1968. Behavior reactions and effects of acrolein and copper sulfate in irrigation water. WSW Res. Prog. Rept. 22:94-95.
8. Hattrup, Alan R. 1967. New innovations for low rate acrolein applications to the Columbia Basin project carriage system. WWCC Res. Prog. Rept. 21:115.
9. Bartley, T. R. 1967. Evaluation of copper sulfate for control of pondweed in irrigation canals. WWCC Res. Prog. Rept. 21:116-118.
10. Riemer, D. N. and S. S. Toth. 1967. Behavior of copper sulfate in small ponds. Proc. NEWCC 21:534-537.

(Continued on page 49)

classifieds



When answering ads where box number only is given, please address as follows: Box number, c/o Weeds Trees and Turf, 9800 Detroit Ave., Cleveland, Ohio 44102.

Rates: "Position Wanted" 10¢ per word, minimum \$3.00. All other classifications 20¢ per word, minimum \$4.00. All classified ads must be received by Publisher the 10th of the month preceding publication date and be accompanied by cash or money order covering full payment. Bold-face rule box: \$25.00 per column inch.

USED EQUIPMENT

COMPLETE new and used units and spare parts for professional grounds maintenance and lawn spray equipment. Applies thousands of gallons of liquid fertilizer, insecticide, fungicide, surfactant and weed control at one time with automated precision without refill. Unable to meet planned expansion, must sacrifice where is as is. Contact Dave Wilson or Wayne Matson 615 244-7201.

FOR SALE: 35 gallon Hardie sprayer with a 400 gallon wooden tank, mounted on a 1947 Studebaker truck. Good operating condition. \$1,000 or best offer. Tamke Tree Experts, Bernardsville, N.J. 07924. Phone 201 766-1397.

VERMEER model 18, series 188, \$2,800.00; 1968 Asphundh 16" 8 cylinder chipper, \$3,600.00; Hardie sprayer 35 GPM (as is), \$300.00; 1968 5T Alenco crane with 60' boom extension on Ford chassis, \$12,500.00. Osborne Bros. Tree Service, Mentor, Ohio 44060. Phone 946-4355.

SPRAYERS, chippers, log splitters and other equipment at large savings. Let us know your needs. Equipment Sales Company, 5620 Old Sunrise Highway, Massapequa, New York 11758.

HELP WANTED

WANTED: Top-Notch Tree-Service Salesman. The man we want has a degree in forestry or equivalent, five years' experience in selling tree work, hiring and managing tree and landscape crews, and is ready to accept responsibility and progress with a dynamic company. If you are the man, you will be well-compensated, with top salary, company car, with bonus and commission geared to performance. And a liberal pension plan. You will be proud to sell our services to homeowners, utilities, municipalities, and industries. We are one of the nation's top 10 tree care and landscaping businesses, and growing. As we grow, you grow, too. Write us about yourself or send a resume. Your reply will be treated confidentially. Write c/o Box 66, Weeds, Trees and Turf, 9800 Detroit Ave., Cleveland, Ohio 44102.

SEEDS

SOD QUALITY MERION SEED for discriminating growers. Also Fylking, Delta, Park, Newport, Nugget and Pennstar bluegrasses as well as fine fescues. We will custom mix to your specifications. Michigan State Seed Company, Grand Ledge, Michigan 48837.

Wilson (from page 17)

per acre. It is almost impossible to apply sprays with hand-held guns and achieve uniform coverage. An alert sprayman can achieve a satisfactory degree of coverage, however it takes constant concentration.

Knowledge of the various factors that make up the mechanics of spray application will not guarantee a total absence of herbicide application failures; however, a thorough understanding of the major principles involved will increase your percentage of successes.

REFERENCES

- The following text and articles were used freely—
Symposium 1960. "The Nature and Fate of Chemicals Applied To Soils, Plants and Animals." ARS20-9 USDA.
Norman B. Akesson and William E. Burgoyne. 1967. "Spray Atomization, Application, Volume and Coverage." Proceedings, California Mosquito Control Association.
Don Razez 1964. "Growers Get More Millage Out of Chemicals With Adjuvants," California Farmer. November 21.
E. E. Schweizer, 1965. "Surfactants, How They Increase Herbicide Action." Weeds, Trees and Turf. January.
Walter Eberling, "Subtropical Entomology." Lithotype Process Company, San Francisco, California.

Gallagher (from page 38)

- Reimer, D. N. and R. D. Ilnicki. 1968. Reproduction and overwintering of cabomba in New Jersey. Weed Sci. 16 (1):101-102.
- Walker, Charles R. 1966. Aquatic weed control summary. NCWCC Res. Rept. 22:110-112.
- Pierce, Phil C. 1967. Results of field testing diuron as an effective herbicide for the control of vascular aquatics. Proc. SWC 20:327-333.
- Hambic, Robert N. 1969. Testing diuron as an economical herbicide in recreational lakes. Proc. SWSS 22:321-323.
- Hiltebran, R. C. 1967. Aquatic weed control summary. NCWCC Res. Rept. 24:44-45.
- Yeo, R. 1969. Personal correspondence. (U.S.D.A., Univ. Calif., Davis)
- Patterson, William G. 1969. The 3M concept of aquatic weed control. Proc. SWSS 22:324-327.
- Cortell, J. M. 1969. Field evaluations of new controlled release aquatic herbicides. Proc. NEWCC 23:385-389.
- Denton, Jerry B. 1967. Certain relationships between the chemical composition of aquatic plants and water quality. Proc. SWC 20:354-362.
- Riener, D. N. and S. J. Toth. 1967. A survey of the chemical composition of aquatic plants in New Jersey. Bulletin 820. (New Jersey Agricultural Exp. Sta.)
- Ryan, James B. 1969. The effects of fertilization on the mineral composition of pond water. Proc. NEWCC 23:350-358.
- Otto, N. E. 1969. Effects of nitrogen and phosphorus on pondweed productivity. WSW Res. Prog. Rept. 23:99-100.
- Weldon, L. W. and R. D. Blackburn. 1967. The control of floating aquatic weeds with ametryne. Prod. SWC. 20:312.
- Weldon, L. W., H. T. DeRigo and R. H. Blackburn. 1968. Control of alligatorweed with dichlobenil. Proc. SWC 21:287-291.
- Spencer, Sam L. 1967. The effect of herbicides on seven species of aquatic plants in the Mobile delta. Proc. SWC 20:319-326.
- Pryor, Murry R. 1969. Alligatorweed control with vapam (SMDC). WSW Res. Prog. Rept. 23:101.
- Steenis, J. H. and H. J. Elser. 1967. Waterchestnut control with mixtures of 2,4-D and dicamba. Proc. NEWCC 21:550-551.
- Weldon, L. W., R. D. Blackburn and W. C. Durden, Jr. 1969. The control of fragrant water lily with dichlobenil. Proc. SWSS 22:316.
- Taylor, James. 1969. Personal correspondence.

—Advertisers Index—

| | |
|---|------|
| Air-Lec Industries, Inc. | 36 |
| American Bio-Turf | 39 |
| Applied Biochemists, Inc. | 38 |
| Aquamarine Corp. | 35 |
| Asplundh Chipper Co.2nd Cover | |
| B A G Corporation | 44 |
| John Bean Div., FMC Corp. | 15 |
| Cal-Turf | 27 |
| Chevron Chemical Co., Ortho Div.4th Cover | |
| CLM National | 42 |
| Diamond Shamrock Co. | 41 |
| Dow Chemical Co. | 5, 7 |
| Elanco Products Co.3rd Cover | |
| Elm Research Institute | 37 |
| Engler Mfg. Co. | 23 |
| FMC Sidewinder | 26 |
| Golf Course Builders of America | 47 |
| Gordon Corporation | 10 |
| International Shade Tree Conference | 36 |
| Jacklin Seed Co. | 18 |
| King Brothers Ind. | 47 |
| Mitts & Merrill, Inc. | 45 |
| Mott Corporation | 6 |
| Ousley Sod Co. | 47 |
| Precision Chipper Corp. | 21 |
| Rain Jet Corp. | 43 |
| Roto-Hoe Co. | 47 |
| Rowco Mfg. Co. | 43 |
| Ryan Equipment Co. | 29 |
| Scientific Guide | 9 |
| Stihl American, Inc. | 3 |
| Thompson-Hayward Chemical Co. | 17 |
| Vermeer Manufacturing Co. | 25 |
| World Wide Golf Enterprises, Inc. | 46 |

| |
|--|
| 30. Comes, R. D. and L. A. Morrow. 1968. Control of white waterlily (<i>Nymphaea tetragona</i>) with dichlobenil. Proc. WSW 22:92-93. |
| 31. Reimer, D. N. and N. W. MacMillan. 1967. Effects of defoliation on spatterdock (<i>Nuphar advena</i>). Proc. NEWCC 21:556. |
| 32. Reimer, D. N. 1969. Further studies on the control of spatterdock (<i>Nuphar advena</i>). Proc. NEWCC 23:380-385. |
| 33. Hollingsworth, E. B. and R. D. Comes. 1966. Control of reed canarygrass. WWCC Res. Prog. Rept. pp. 99-100. |
| 34. Oliver, Floyd E. 1967. Preemergence control of annual weeds on irrigation rights of way—Columbia Basin project, Washington. WWCC Res. Prog. Rept. pp. 112-113. |
| 35. Kemper, Harold M. 1968. The seasonal response of hardstem bulrush to methanearsonates. WSW Res. Prog. Rept. 22:91-92. |
| 36. McHenry, W. B., L. L. Bushman, and N. L. Smith. 1968. Seasonal response of hardstem bulrush to MSMA, Pyriol, 2,4-D and dalapon + TCA. WSW Res. Prog. Rept. 22:92. |
| 37. Averitt, William K. 1967. An evaluation of the persistence of 2,4-D amine in surface waters in the state of Louisiana. Proc. SWC 20:342. |
| 38. Daly, R. W., H. H. Funderburk, Jr. and J. M. Lawrence. 1968. Persistence of diquat, paraquat and 2,4-D BEE when used for Eurasian water milfoil (<i>Myriophyllum spicatum</i>) control. Proc. SWCC 21:299. |
| 39. Frank, P. and R. D. Comes. 1967. Herbicidal residues in pond water and hydrosoil. Weeds 15 (3):210-213. |
| 40. Butler, J. M. Jr., Frederick F. Ferguson, Louis A. Berrios-Duran. 1968. Significance of animal control of aquatic weeds. Proc. SWC 21:304-308. |
| 41. Blackburn, Robert D. and Lloyd A. Andres. 1968. The snail, the mermaid, and the flea beetle. Science for better living. pp. 229-234. USGPO, Washington, D. C. |
| 42. Zieger, C. F. 1967. Biological control of alligatorweed with <i>Agasticles n. sp.</i> in Florida. Proc. SWC 20:299-303. |
| 43. Bryand, C. Brate. 1969. Aquatic weed harvesting. Weeds Trees and Turf 8(10):14-17. |