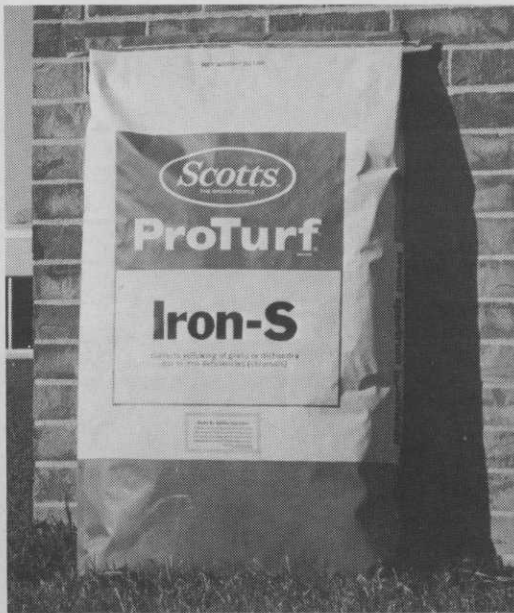


Massey-Ferguson
Lawnmotoring
MF 7, 10 and 12 style



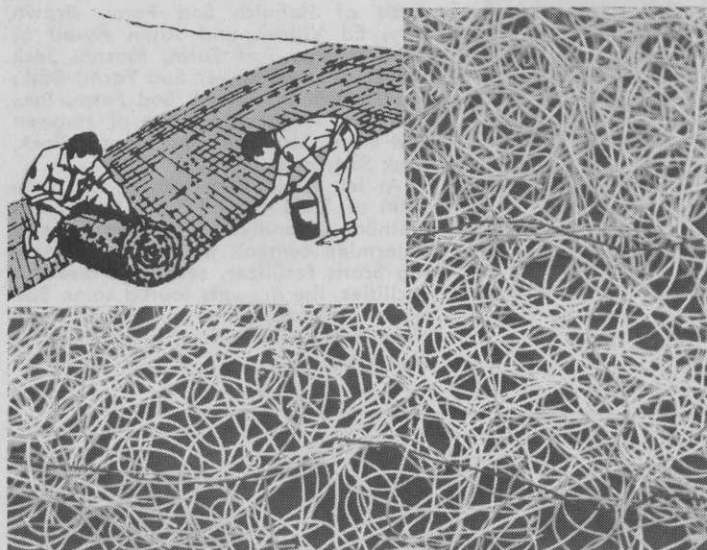
LAWNMOTING CATALOG,
Massey-Ferguson, Inc., Des Moines, Ia.

The above catalog describes the MF line of 7 to 112 hp tractors and accessories available, including snow blades, snow blowers, sprayers, sweepers, rollers, aerators, three to five gang reel mowers, diggers, rotary tillers, etc. The MF 5 and MF 6 riding mowers feature rocking front axles and differential-equipped rear axles. Both machines have "Feather Lift" mower height adjustment. The MF 5 has two speeds forward and one reverse and is powered by a 5 hp Tecumseh engine, cutting a 26-inch swath. Heights range from 1½ to 3¾ inches. MF 6 has a 6 hp Tecumseh engine and cuts a 32-inch swath. Its transmission provides three speeds forward and one reverse. For details, circle (701) on the reply card.



NEW TURF PRODUCTS, O. M. Scott & Sons Co.,
Marysville, Ohio

New additions to the Scotts ProTurf line are ProTurf Starter Fertilizer and ProTurf Iron-S. The products are to be sold to golf courses, industrial and professional users. ProTurf Starter Fertilizer is said to enhance seedling growth and root establishment. It is dry-applied, granular, odorless and non-burning, composed of homogenous dust-free particles. One 44-lb. bag treats 11,000 sq. ft. ProTurf Iron-S helps turfgrass and dichondra with iron chlorosis to quickly regain their normal color. It also is a dry-applied, ready-to-use product, composed of homogenous dust-free particles. One 30½-lb. bag treats one-quarter acre. For more details, circle (702) on the reply card.



SOIL RETENTION BLANKET, AMXCO, Inc., Arlington, Tex.

Constructed of interlocking, curled, barbed aspen fibers, the soil retention blanket provides low-cost erosion control for steep slopes, shoulders, median strips, embankments, drainage ditches, ski slopes, waterways, dam sites, levees, and landscape improvements generally. Especially suited for steep grades and areas exposed to heavy water or strong winds. It stays put long enough to get good growth established, then decomposes gradually. For more details, circle (705) on the reply card.



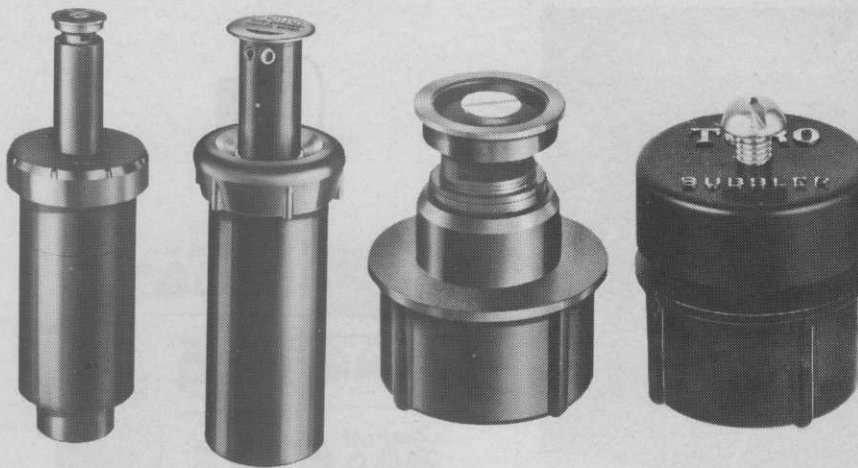
CORE SHREDDER ATTACHMENT, Skagg's Turf Equipment,
Canfield, Ohio

Eules Skaggs, left, and Harold Skaggs are introducing this spring a core shredder attachment that shreds cores (right half of bottom picture) as a golf green is aerated. It's a one man operation, says Harold, who is a golf superintendent. The shredded cores become an ideal top dressing. If you have greens built to USGA specification, you need this attachment to avoid changing your soil composition, the Skaggs say. For more information, circle (706) on the reply card.



COMMERCIAL TRIMMER EDGER,
Goodall Division, Louisville, Ky.

Model 18G-35THD is especially designed for professional trimming and edging. Easy to handle, the front caster wheel swivels, permitting easy, level turning when trimming around trees, fences, walls and shrubs. Front caster wheel is locked in the straight forward position for tilting when edging along sidewalks, driveways and curbs. Edger-guards prevent marking or chipping from blade and direct grass away from objects you want to trim or edge. Heavy-gauge steel handles and steel wheels are set in and behind edger-guards. Cutting height adjustable from 1 3/8 to 2 3/8 inches. The line includes 10, 12 and 18 inch trimmers and edgers. For details, circle (703) on reply card.



MODEL 550 SERIES
Pop-up Spray Head
Eleven Interchangeable Heads

MODEL 620 SERIES
Pop-up Gear Driven
Rotary Sprinkler

MODEL 500 SERIES
Adjustable Shrub Head

MODEL 911 SERIES
Adjustable Stream Bubbler

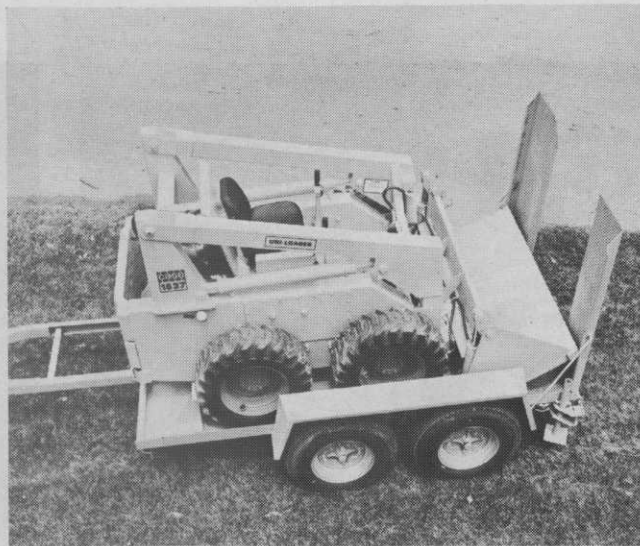
NEW SPRINKLER HEADS, Toro Manufacturing Corporation, Moist O'Matic Division, Riverside, Calif.

New for 1971: The 620 series pop-up sprinkler head has a pop-up stroke of 2 3/8 inches. Spring-loaded sealed riser insures positive retraction. Filter can be serviced in the field. The 620 head is designed for large residential, commercial and institutional systems. Available in four models: 1/4-circle, 1/2-circle, 3/4-circle and full-circle. Full-circle covers area 90 feet in diameter. The all new 550 fixed-spray pop-up can cover up to 30 feet and can be purchased with 11 nozzles to alter the arc of the spray. The adjustable shrub head comes in seven models, from 1/4 to a full arc and from a radius of four to 12 feet. The adjustable stream bubbler is designed for use in flowerbeds, ground cover and shrubbery for which ground-level watering is beneficial. It does not spray. It has an adjustable flow or stream. The stream bubbler is available in three models, for 1/4, 1/2 or full arc. It will cover up to nine feet in diameter. For more details, circle (704) on the reply card.



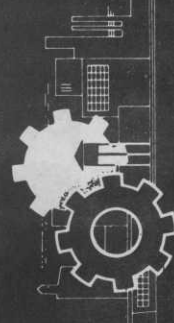
IMPROVED ECONOMY TRACTOR, Engineering Products Co., Waukesha, Wis.

New operating ease in 1971 models is offered by a new 1,000 lb. capacity hydraulic lift system available on all Economy tractor "Power King" and "Jim Dandy" models. Fingertip control begins with pressure supplied by a separate, heavy-duty gear pump which delivers 1.8 gpm at 3600 rpm. A special four-position valve provides control to lift, power, hold, or "float" the bulldozer, mower, plow, or other tools. For details, circle (707) on the reply card.

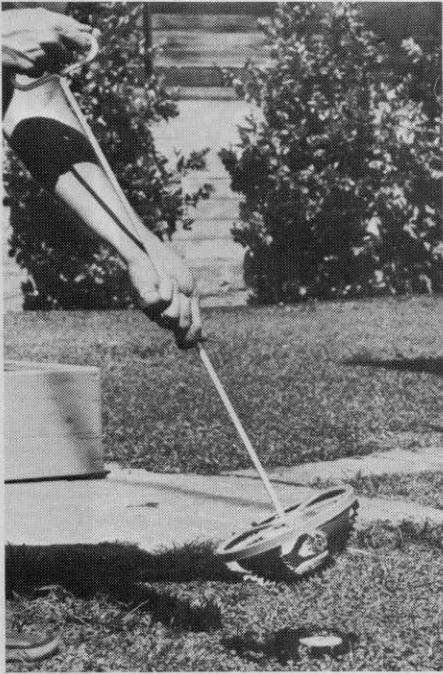


UNI-LOADER TRAILER, J I Case Company, Racine, Wis.

The Uni-Loader trailer has a capacity of 7,500 lbs., and is designed for rugged service and easy towing at highway speeds to 50 mph. An extendable tongue provides adjustable overall lengths of 14'6", 15'6" and 16'6" for proper weight distribution. Six ply tires. 8,000-lb. hitch and surge brake assembly. Hydraulic brakes available. Loading ramps are "ZEE" type tread plate 15" wide and 56" long. For more details, circle (708) on the reply card.



New Products Especially for Turf



SPRINKLER HEAD TRIMMER,
W. J. Seidler Co., Los Angeles, Calif.

"Mr. Trimmer" is a newly introduced lawn and garden tool designed to trim grass around sprinkler heads and to cut out crabgrass and weeds that travel under lawns. It also is an efficient digger for planting seedlings and bulbs. Made of 20-gauge steel, with baked enamel finish, Mr. Trimmer works with an easy twist-and-turn motion. Specially designed cutting edges do a clean-cut job. For more details, circle (709) on the reply card.



BURNER SPRAYER, Aeroil Products
Co., Inc., South Hackensack, N.J.

Aeroil's new combination burner and sprayer is especially designed for golf course maintenance. The unit is available with either a four or five gallon fuel tank. Model #99 burner uses kerosene. The torch is equipped with a shut-off valve and pressure gauge. A sprayer attachment is available for insecticides. Model #99 is especially applicable for burning weeds around the golf course. For more details, circle (710) on the reply card.



IMPROVED SPREADER,
Vandermolen Corp., Livingston, N.J.

The exclusive "Dreycal" epoxy plastic finish is now available on a lower priced Diadem spreader, the new Diadem 290. According to the manufacturer, the "Dreycal" finish is made of a similar epoxy resin as used on the heat shield of the Apollo space capsule. The "Dreycal" finish provides long-range protection from rust and corrosion and allows for easy cleaning. The Diadem 290 has a capacity of 11 cubic feet (9 bushels) or roughly 770 lbs. of fertilizer. The spinner spreads a 50-ft. swath. For more details, circle (711) on the reply card.



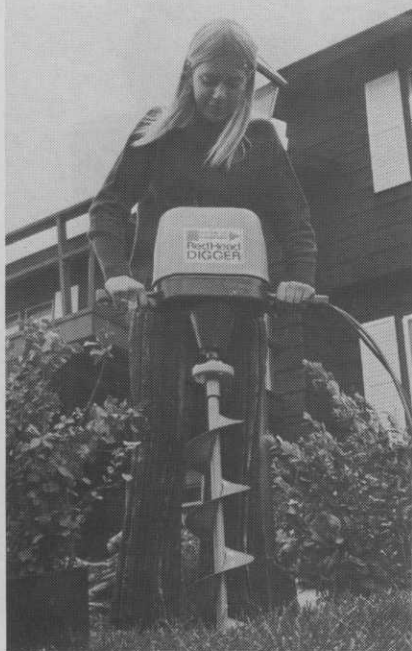
COMPACT LOADER, International Harvester Co., Chicago, Ill.

Highly versatile for all types of landscaping operations is this new IH 3200 Compact Loader to be exhibited at the 9th annual meeting of the Associated Landscape Contractors of America, Jan. 18-22, New Orleans. The 3200 with hydrostatic drive has forward and reverse speeds anywhere from 0 to 8 mph. This ¾-ton, 6.8 to 20 cu. ft. capacity loader pivots in its own length, works under 6-ft. clearance, passes through 4-ft. wide openings. For more details, circle (715) on the reply card.



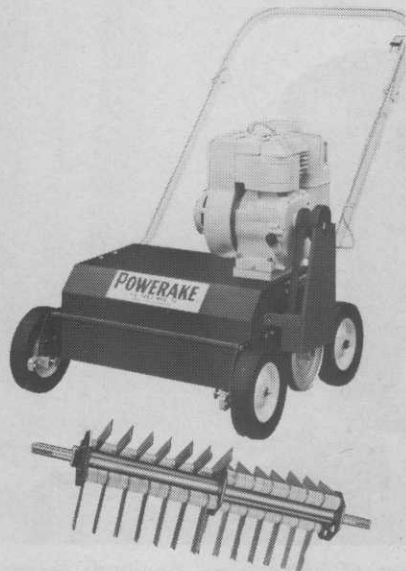
PALOMINO MOWER, Roof Manufacturing Co., Pontiac, Ill.

The Roof Palomino carries four men and their equipment at speeds up to 14 mph. Three 20-inch mowing blades mow large areas fast without scalping. Two PTO stations for driving sweeper, pump, sprayer. Big low-pressure flotation-type tires give the machine traction under adverse conditions. All-weather cab provides operator protection day and night, year around. The 18 hp, hydrostatic transmission allows speeds from a creep to a crawl to a run without shifting. For more details, circle (716) on the reply card.



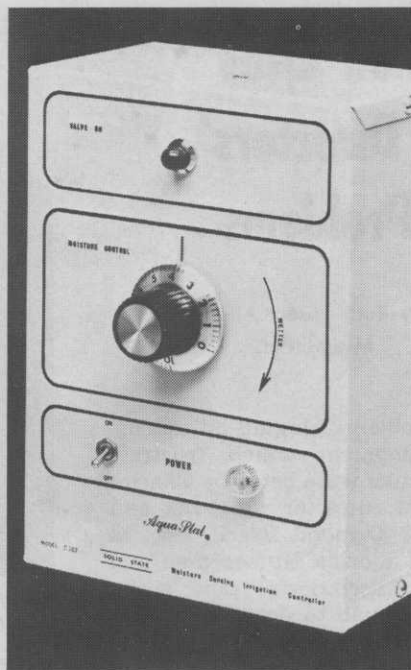
RED HEAD DIGGER, The Savage Co., Dodge City, Kans.

This one-man hole digger operates from any car, truck or tractor 12-volt system. Battery clamps with 20-ft. flexible leads make jobs easy to reach. It's powered by a 2 hp Prestolite motor. Augers come in six sizes, from two to seven inches in diameter. Standard length auger digs holes to 32 inches, and 44 inches using the 12-inch optional extension. Other optional attachments are an adjustable tension slip clutch, Jacobs geared three-jaw ½-inch drill chuck, and a gasoline engine ¾-inch chuck starter. For more details, circle (712) on the reply card.



IMPROVED POWER RAKE, F. D. Kees Mfg., Co., Beatrice, Neb.

Engineering features designed to minimize damage to lawns when using mechanical raking or thatching units have been incorporated into both 1971 Powerrake models. A Kees spokesman explained that both 4 hp and 5 hp Powerrake units utilize 28 hardened steel plate, self-cleaning fingers set on four satellite shafts along with 52 tough Implex spacers. An additional feature of the 1971 models is that the entire shaft may be turned end-to-end to equalize wear. The individual satellites may be easily removed for quick change of worn fingers. For more details, circle (713) on the reply card.



MOISTURE SENSING IRRIGATION CONTROLLER, AgTRONICS Mfg. Co., Barstow, Calif.

The AQUA-STAT is an entire family of controllers, ranging in size from a single station operation to a 26-station controller. Working with an irrigation system, it becomes a "servo-mechanism," capable of maintaining automatically the exact degree and range of moisture for optimum growing conditions of the particular plant. It monitors the soil moisture at a number of points, by means of remote buried sensors. These sensors continually feed back information to the controller. Signals are then generated to operate the proper control valves automatically. For details, circle (714) on the reply card.



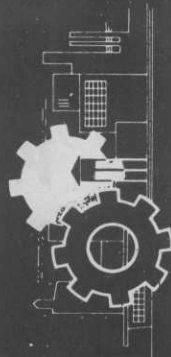
THE OUTLAW, Applied Research and Development Co., Houston, Tex.

This rugged terrain vehicle features an articulating/oscillating center section (45° turn, 20° oscillation). High torque industrial engine (Ford gasoline or Perkins diesel). Turning radius for inside tires is 6 ft.; outside tires, 13 ft. Width is 86"; Length, 179"; height to top of canopy, 96". Ground clearance is 13" at axle, 19" at pivot point. For more details, circle (717) on the reply card.



FOAMSPRAY, The R. L. Wilson Co., Houston, Tex.

Wilco's foaming agent enables more efficient and effective application of herbicides. FoamSpray reduces the amount of water needed; increases the herbicide action on the plant surface; provides visual evidence of spray coverage. No special equipment needed other than foam generator attachment for spray nozzle. For more details, circle (718) on the reply card.



New Products Especially for Turf