

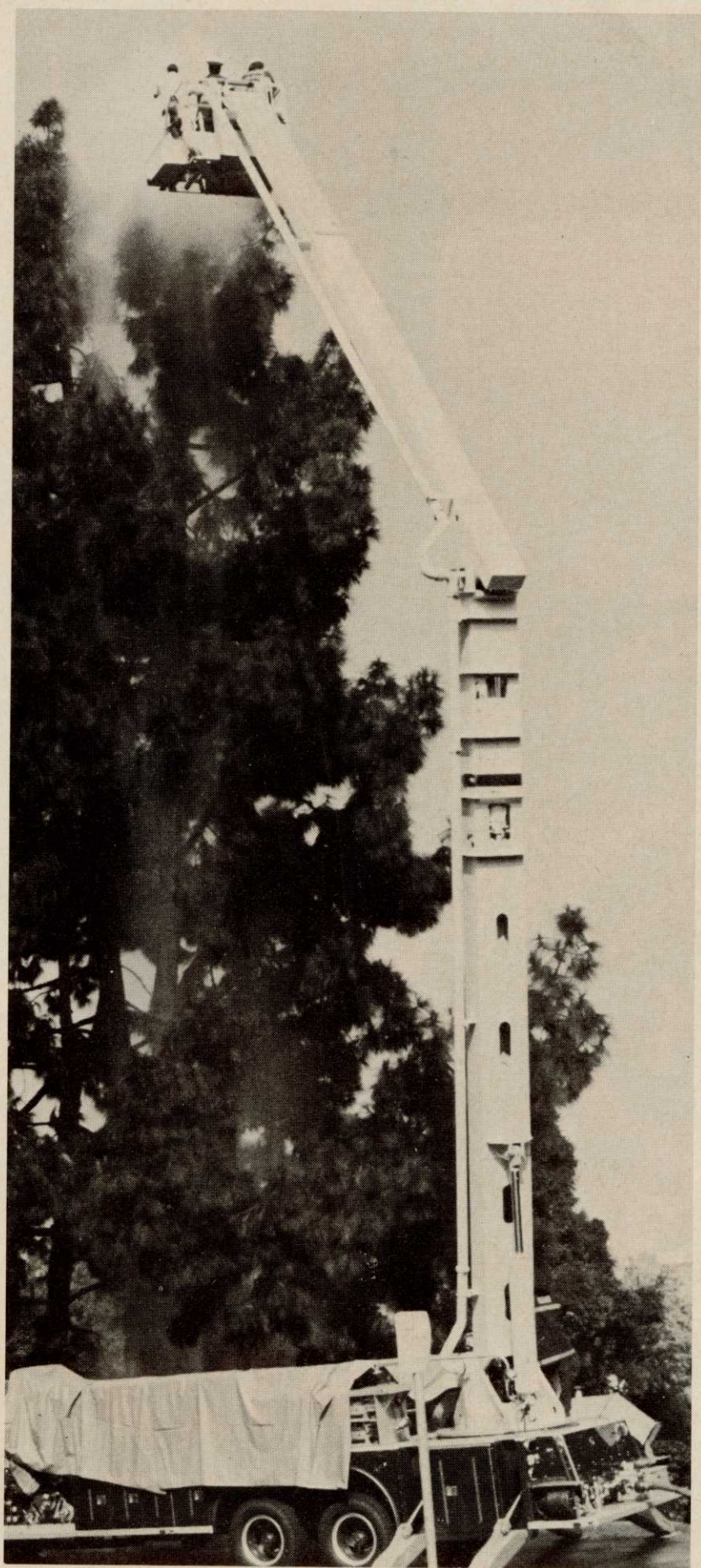
PINE TREE RINSE

DIMINISHING PINES in Southern California is a direct result of pollutants. In mountain areas of Los Angeles and San Bernardino, smog has damaged or killed many native pines. The toll will likely rise as air contamination increases.

Pollutants are less severe in the San Diego area than in other sections, but still adversely affect ornamental pines.

In San Diego, contaminants are generally carried away by prevailing marine breezes, then dispersed in the atmosphere over the mountain ranges to the east of the city. This same breeze is responsible for carrying exhaust fumes from the freeway interchange across Presidio Park. Since the completion of this interchange, problems with Presidio Park pines have increased.

Ornamental pines most severely affected in San Diego have been
(Continued on page 51)



classifieds



When answering ads where box number only is given, please address as follows: Box number, c/o Weeds Trees and Turf, 9800 Detroit Ave., Cleveland, Ohio 44102.

Rates: "Position Wanted" 10¢ per word, minimum \$3.00. All other classifications 20¢ per word, minimum \$4.00. All classified ads must be received by Publisher the 10th of the month preceding publication date and be accompanied by cash or money order covering full payment. Bold-face rule box: \$25.00 per column inch.

FOR SALE

DOUBLE EDGE sod cutter blades. Will fit any Ryan sod cutter. Works like double edge razor blade. Cuts much more sod per blade. Made to bolt on both ways. \$24.00 plus postage. New automatic sod loaders for direct loading to pallets, trucks or trailers. No workers needed on ground. Both products developed and designed by Hadfield. Write or call Glen Hadfield, 4643 Sherwood, Oxford, Michigan 48051. Phone 313 628-2000.

MODERN ESTABLISHED sod farm located North East United States. Fully equipped with irrigation, harvesting and maintenance equipment. Complete storage and repair facilities and office. Established sales outlet assure annual \$6 million square feet or more. Sale offer for health reasons. Interested parties please write to Box 68, Weeds Trees and Turf, 9800 Detroit Ave., Cleveland, Ohio 44102.

FOR SALE

Due to the death of my husband I will sell complete line of tree equipment, business and 3 ac. es.
Located on Highway 23, Ottawa, Illinois.
\$49,000, \$9,000 down - will take contract for the balance. Phone 815 932-4209 evenings.

SPRAY AND TREE SERVICE—Illness forces sale of fast growing but stable business. Regular four time per year customer route. Very modern equipment. \$34,500.00, terms. Write: George DesBrisay, 333 American Bank Bldg., Portland, Oregon 97201.

USED EQUIPMENT

VERMEER model 18, series 188, \$2,800.00; 1968 Asplundh 16" 8 cylinder chipper, \$3,600.00; Hardie sprayer 35 GPM (as is), \$300.00; 1968 5T Alenco crane with 60' boom extension on Ford chassis, \$12,500.00. Osborne Bros. Tree Service, Mentor, Ohio 44060. Phone 946-4355.

FOR SALE—Sky Worker 50 foot working height. Model 1044A, mounted on 1966 F-600 Ford truck. Actual miles, \$10,000, good condition, just checked over at factory. Glenn Sowers, Jr., P.O. Box 74, Sycamore, Ohio 44882. Phone 419 927-9752 after 6:00 P.M.

FOR SALE: 7 gang Roseman mowers, \$1150.00; 13 gang Roseman, \$2100.00; 18" Ryan sod cutter with Rollryder attachment, \$795.00. Foulkes Sod, Fall River, Wisc. 53932. Phone 414 326-5267.

POSITIONS WANTED

AGGRESSIVE young man desires position of assistant or superintendent at a golf course. Has associate degree with majors in outdoor recreation and soils. Honors graduate. Four years seasonal employment. Draft exempt. For resume write William Lamers, 250 S. Willow St., Kimberly, Wisc. 54136.

SEEDS

LAWN GRASS SEED — Full line including sod-quality Merion, Fylking, bluegrasses, fescues, bentgrasses, ryegrasses, etc. We specialize in custom mixing.
OLIGER SEED COMPANY
P.O. Box 3765, Akron, Ohio 44314
Phone 216/753-2259

Pine Tree Rinse (from 11)

Pinus halepensis and *Pinus radiata*. High calcium content of the Colorado River water is a contributing factor to the weakening of these trees, making them susceptible to infection with red spider mites and borers. Varied efforts, including sprays, fertilizer, and acidification of the soil, to bring these trees back to health have had little success.

George Kempland, Park Supervisor for the City of San Diego, hit on the idea of using the city fire department's snorkel truck to wash the grit covering some 100 pine trees in Presidio Park.

"I heard that the snorkel was used in periodic drills in a parking lot of Balboa Park," said Kempland. "I thought instead of just wasting the water that it could be used on the trees in the park. We need the snorkel because the pine trees are tall." Operation Hose Down thus became a coordinated effort of park maintenance and fire department personnel.

"The trees washed are located in lawn areas and most water was absorbed," noted Kempland. "Water which did fall on paved areas ran into canyons and was also used."

Clear water was pumped. It fell from the trees black, rinsing both grime and dead needles, plus other accumulated debris. Rainfall in the San Diego vicinity being moderate, the washing did more cleaning than the heaviest rainfalls.

"Trees took on an immediate healthier appearance and showed a noticeable growth within 30 days," said Kempland. "We anticipate using this system in late summer and again in early fall. If repeatedly successful, the operation could be expanded throughout San Diego's city parks."

James R. Garinger, a captain in

—Advertisers Index—

Applied Biochemists, Inc.	36
Asplundh Chipper Co.	34
BAG Corporation	34
Bar Way Mfg. Company	29
Beseler Equipment Co.	49
Brillion Iron Works, Inc.	6
Samuel Cabot, Inc.	46
Cal-Turf	10
CLM National	37
Conwed Corporation	35
Davey Tree Expert Co.	7
Diamond Shamrock Co.	24, 43
Ditch Witch Trenchers	23
Dow Chemical Co.	2nd Cover
FMC Side Winder	37
Geigy Agricultural Chemicals Div.	5
Golf Course Builders of America	45
Gordon Corporation	47
Hercules, Incorporated	2A & 2B
Jacklin Seed Company	38
King Brothers Industries	45
Limb-Lopper Co., Inc.	9
Lindig Mfg., Inc.	28
Lofts Chandlerlin Seed Company	4th Cover
Merion Bluegrass Assn.	17
Mitts & Merrill, Inc.	3rd Cover
Mott Corporation	39
Nursery Specialty Products Co.	29
Precision Chipper Corp.	15
Roto-Hoe Co.	45
Safety Test & Equipment Co.	25
Servis Equipment Co.	21
Skyworkers, Inc.	36
Stihl American, Inc.	3

the San Diego Fire Department, explained the operation from the fire department's point of view.

"We decided to use the snorkel rather than the aerial ladder truck because of the better maneuverability of the snorkel as a water tower. You have to set up a nozzle and hose on the aerial ladder, where on the snorkel the water tower is permanent," said Capt. Garinger. "You just connect the hose at the base of the snorkel."

"We asked George Kempland to stop us if he thought we had too much pressure, doing more damage to the trees than good," said Capt. Garinger. "It worked out fine, each fireman got a chance to control the nozzle and move the snorkel basket around. This was good training and water served two purposes—training and maintaining trees."

SAVE TIME AND TREES



- WITH BESELER TREE SLINGS
- Less digging, adjustable
 - For any soil condition
 - No skill required
 - Quickly on or off
 - Controllable tilt
- Patented

BESELER EQUIPMENT CO., 5417 Oak Lawn Ave., MINNEAPOLIS, MINNESOTA 55424

For More Details Circle (130) on Reply Card