

RAKE-O-VAC, Toro Manufacturing Corp., Minneapolis, Minn.

Toro has added the Rake-O-Vac to its line of turf equipment, acquiring the rights to the machine from Goodwin Equipment Service, Inc., of Manteca, Calif. The Rake-O-Vac picks up litter and debris from both soft and hard surfaces and includes a turf renovator. The machine has an 18-hp, two-cylinder gasoline engine that powers a 24-inch double inlet centrifugal vacuum fan and the reel units. With an empty weight of 2,060 lbs., it may be drawn by utility vehicle, tractor or light truck. Rake-O-Vac is said to be ideal for parks, golf courses, cemeteries, institutions, city streets, parking lots, school yards, stadiums and ball parks. For more details, circle (701) on the reply card.



NEW FERTILIZER PRODUCTS, Kaiser Agricultural Chemicals, Savannah, Ga.

Kaiser now offers a specially formulated line of landscape products for parks, football fields, recreational areas and golf courses. No. 101 is a 12-4-8 fertilizer, 80% organic nitrogen with 60% actual water insoluble nitrogen. No. 102 is 40% organic nitrogen fertilizer, 12-4-8, 30% actual water insoluble nitrogen. No. 103 is a general use, slow-release 38% nitrogen product. No. 104 is a turf fertilizer and weed killer, 12-4-8, with Balan herbicide for pre-emergence control of Poa annua and crabgrass. Kaiser offers free soil tests to determine the exact formulation needed. For more details, circle (702) on the reply card.



NEW FOUR-WHEEL DRIVE AND SMALL TRUCK, Suzuki Truck Importers, San Diego, Calif.

The new Suzuki Four-Drive Brute is a part of the L41 truck line. It uses the same two-cylinder, air-cooled engine and the same four-speed transmission as the truck; however it has a standard low-range transmission and four-wheel drive. Suzuki Truck offers twice as large a load bed as the Four-Drive (about 6' long and 4' wide) and a full 1/2-ton load capacity. Both vehicles are said to get excellent gas mileage — the Four Drive about 27 mpg; the truck, about 33 mpg. For more information, circle (705) on the reply card.



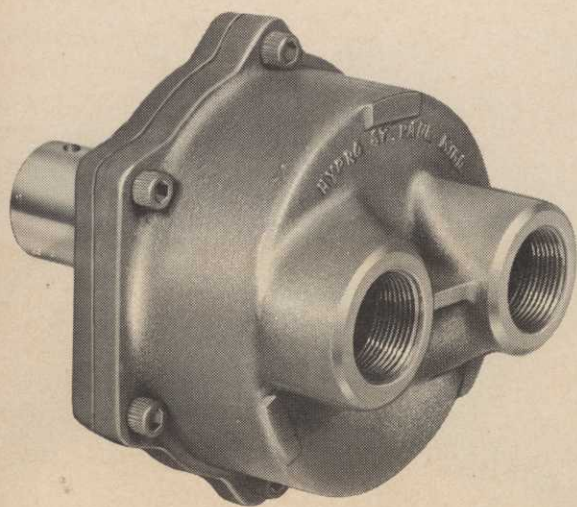
MORE "MUSCLE" IN TRACTOR, Waldon, Inc., Fairview, Okla.

Two new Ford water-cooled engines and a new 65 hp Wisconsin air-cooled engine, plus a new gearbox, have added more muscle to the Waldon All-Hydraulic, four-wheel-drive tractor unit. This gives the unit five engine options, higher maximum travel speed, a new hood design, and a new balance advantage for use as a bucket loader or fork lift. Frequent requests for water-cooled engines brought the introduction of the Ford four-cylinder, in a 68 hp gasoline and in a 59 hp diesel. The new Wisconsin 65 hp option is added to the 37 hp Wisconsin and a 48 hp Deutz diesel, both air-cooled. For more details, circle (706) on the reply card.



FRONT RUNNER MAINTENANCE VEHICLE,
Hesston Corporation, Hesston, Kans.

Front Runner, Hesston's new entry in the lawn and garden field, is called the first ground maintenance vehicle ever designed especially for the job. More than just a miniature farm tractor, Front Runner is articulated (hinged in the middle) and has a front-mounted mower that cuts grass before the machine runs over it. Hesston offers a complete line of attachments for the machine, including a self-contained vacuum collector that mounts in its own carry-all instead of being pulled behind on a special cart. Front Runner is a 14 hp machine with a top speed of 11 mph. For details, circle (703) on the reply card.



NEW ROLLER PUMP, Hypro Division, Lear Siegler,
St. Paul, Minn.

A new end-ported Series 8500 roller pump for spraying weed killers, insecticides and liquid fertilizers has been announced. It delivers a maximum of 28½ gpm at 600 rpm and 0 pressure with a delivery of 23 gpm at 540 rpm and 30 pounds pressure. The new pump features a unique rotor design engineered to pump powder suspensions and other similar liquids more efficiently. Rollers never pass over openings or portings, thus increasing roller life and improving over-all performance. Weighs about 28 lbs. For more details, circle (707) on the reply card.



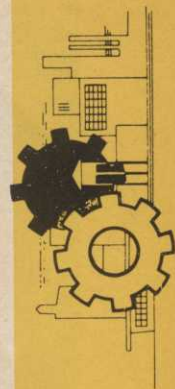
NEW PRODUCTS FOR SOD FARMS, O. M. Scotts & Sons.

Three new ProTurf products have been introduced for use in sod fields. They will be sold to sod growers throughout the U.S. through Scotts ProTurf Division. ProTurf Fairway fertilizer is a 30-3-10 controlled-release Polyform fertilizer, non-burning, has no chloride-containing salts, and is a ready-to-use granular product. ProTurf Nitrogen-Potassium contains no phosphorus and is designed for *Poa annua* control programs or wherever phosphorus is not required. Analysis is 32-0-8. ProTurf Fertilizer with DSB Fungicide has been developed to control and prevent Dollar Spot and Brown Patch. The systemic non-mercurial fungicide provides long residual disease benefits. The fertilizer analysis is 28-5-3. For more details, circle (704) on the reply card.



NEW FLAIL MOWER, Engler Mfg. Corp., Houston, Tex.

Available in both 72" and 90" models, the new Terrain King flail mower features exclusive "quick change" knives, reversed or replaced with a "twist of the wrist," says R. R. Wright, president of the company. Blades are removed readily by hand, without special tools or delays. Both lift and pull-types are available. The balanced shaft minimizes vibration. The drive line, belt and shaft are fully shielded for safety, and a rear safety flap is standard equipment. Optional on pull-type models are 6x9 notat wheels. For more details, circle (708) on the reply card.

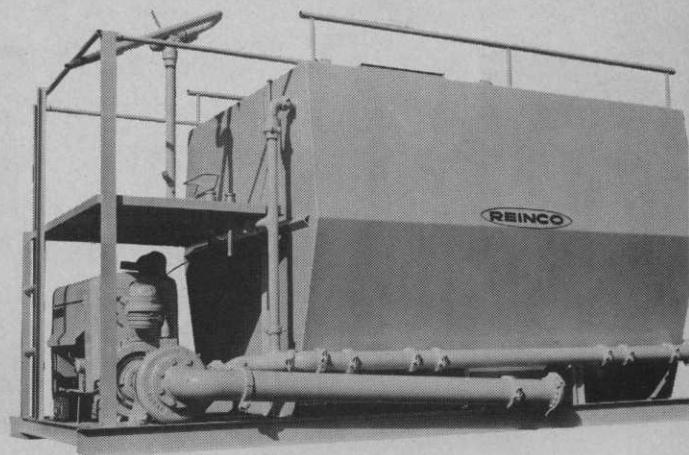


New Products



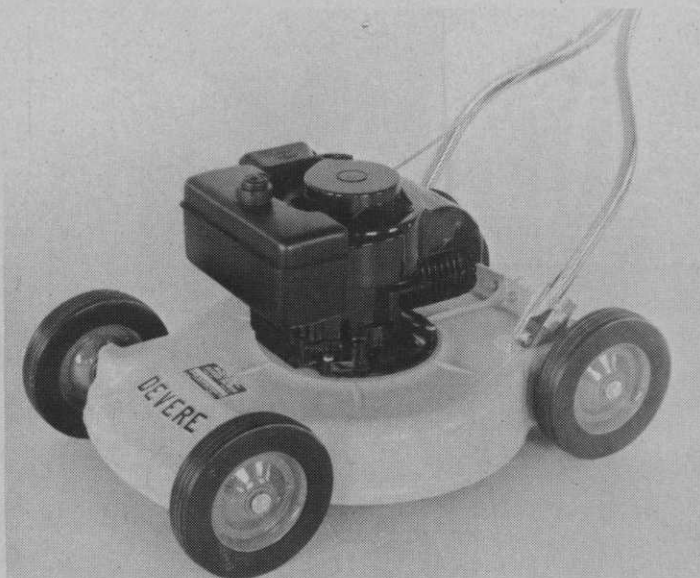
SELF-PROPELLED WEED SPRAYER, Randell Mfg. Co.,

This nearly new system can be operated from either side by one man. A hand gun on each side, a center boom and two wing booms make it possible to direct spray to inaccessible places. The booms can spray a 16' swath, and have a break-away feature that allows them to bounce away from obstructions and return to their original position automatically. On uneven terrain, the Randell Self-propelled unit gives complete and even coverage and is capable of speeds up to 15 mph. Four basic models range from 9 to 30 hp, with either front or rear mounted engines, four-wheel-drive, and various drive options. Randell sprayers are shipped ready for use. For details, circle (709) on the reply card.



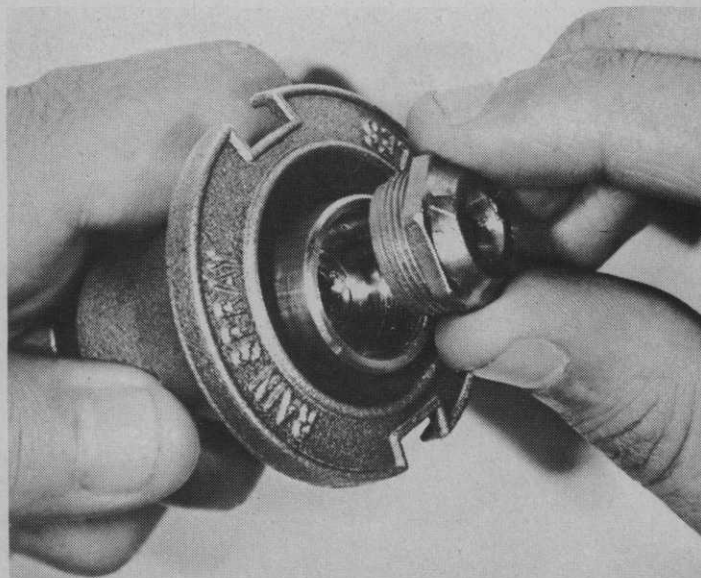
NEW HYDROGRASSING UNIT, Reinco, Inc., Plainfield, N.J.

Reinco's new 2,500-gal. working capacity Hydrograsser incorporates the exclusive all-hydraulic jet agitation mixing system. Power is supplied from a six-cylinder 200 C.I.D. water-cooled engine, developing 151 gross hp at 2800 rpm. The pump is an all iron straight centrifugal type with $\frac{7}{8}$ " particle size clearance. It is stated that a spray range of 200' from the spray platform can be expected. The hydraulically balanced spray return loop attached to the spray boom allows quick coupling of long and medium range, and fan pattern, all cast iron spray nozzles. For more details, circle (710) on the reply card.



TRIMMING MOWER, Devere Mfg. Co., Racine, Wis.

Devere has announced an 18" heavy duty trimming type rotary mower designed especially for commercial users, such as golf courses, parks and schools. Powered by a 3½ hp engine, the unit can trim on either side close to trees, walls, and other stationary objects, thus eliminating much time consuming hand trimming and the inconvenience of one-side only trimming. Cutting heights are from 1" to 3" in $\frac{3}{4}$ " increments. Optional equipment includes a 5½ qt. tank. For details, circle (713) on the reply card.



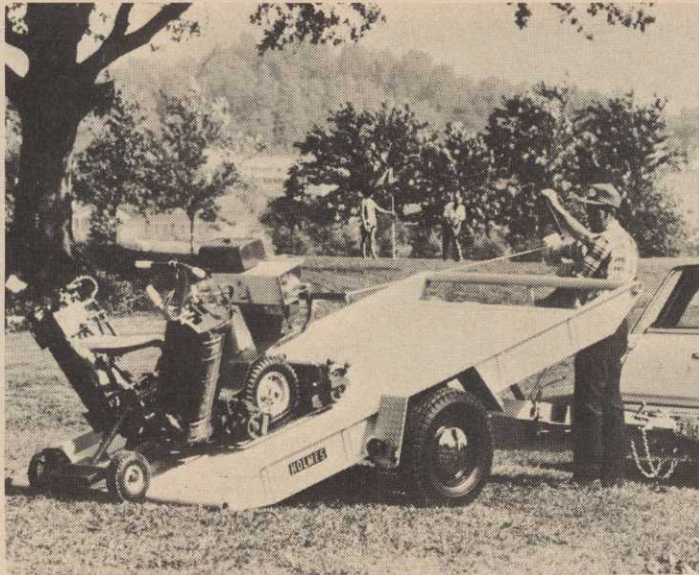
BRASS NOZZLE INSERTS, The Leisure Group, Inc., Los Angeles, Calif.

Thompson has added four corrosion-resistant brass nozzle inserts to its 1971 line of Rain Spray underground sprinkler heads. The new brass inserts, and companion Delrin Plastic inserts, come in four spraying patterns from a quarter-circle to a full-circle. They are interchangeable in all Rain Spray underground heads, except the bubbler head and those made of molded polypropylene plastic. Rain Spray underground sprinklers are available in brass, zinc or polypropylene standard heads; brass or polypropylene pop-up heads; a brass shrubbery and ground cover head; and a brass bubbler head. For more details, circle (714) on the reply card.



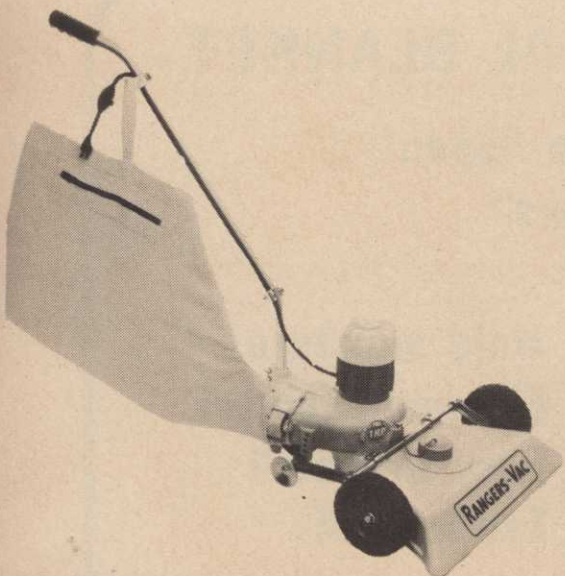
COMPATIBILITY AGENT, Thompson-Hayward Chemical Co., Kansas City, Kans.

UNI-MIX is a tank mix additive which aids in keeping pesticides uniformly mixed with liquid fertilizers during field application. It is said to be effective in increasing the compatibility of pesticides not specially formulated for simultaneous applications with liquid fertilizers. UNI-MIX can be used in a variety of fertilizer-pesticide combinations. The product is packaged in the new "no-glug" one gallon jug, four to a case. For more details, circle (711) on the reply card.



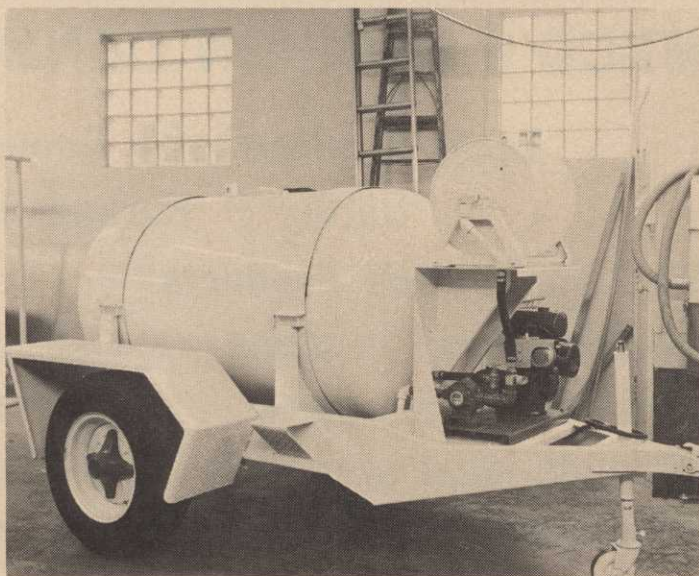
TILTING BED TRAILERS, Ernest Holmes Co., Chattanooga, Tenn.

A full line of heavy industrial-type, tilting-bed trailers has been introduced, consisting of five models, ranging in hauling capacities from 4,000 to 16,000 pounds, making them suitable for transporting such equipment as gang mowers, wheel tractors, backhoes, and small dozers. The bed can be tilted by a few strokes on a hydraulic jack provided for this purpose. Tilting and loading requires only one man. Depending on the size capacity, Holmes tilting-bed trailers have a spring-mounted, two-wheel, single axle or an eight-wheel, spring-mounted walking beam suspension. For more details, circle (712) on the reply card.



LIGHTWEIGHT ELECTRIC VACUUM, Rangers Die Casting Co., Lynwood, Calif.

Rangers Model #2098 all-purpose electric vacuum is designed for lawns, driveways, garages, workshops, playrooms, factories, stores, office buildings and parking lots. It picks up leaves, twigs, grass, weeds, small stones, common trash and litter. The #2098 Vac has a 1.1 hp burn-out-proof electric ball bearing motor. Vacuum weighs 26 pounds. Bag capacity is about two bushels. For more details, circle (715) on the reply card.



TRAILER SPRAY UNIT, Lewis Equipment Co., Muncie, Ind.

These units are available with most any type pump and engine combination that a customer would want. They also can be equipped with mechanical agitation for using wetttable powders. Trailer has electric brakes, the tank is 300-gal. capacity with two baffles and gauge, pump is 7500 Hypro, engine is 4 hp Kohler cast iron block, hose reel is 1/2" 200 ft. long, and tires 215-14-4 ply. For more details, circle (716) on the reply card.



New Products