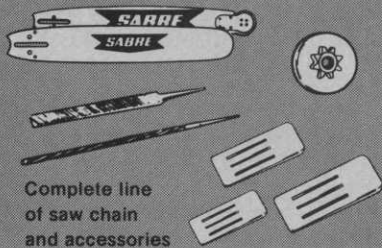




Ever since I first bought here, I've been coming back for more. Sabre is one top value you won't beat anywhere.



Complete line of saw chain and accessories

**SABRE**

*the saw.chain people*

**SABRE SAW CHAIN INC.**  
Niagara Falls, N.Y. 14304

SABRE SAW CHAIN INC., Dept. P  
P.O. Box 272 La Salle Station,  
Niagara Falls, N.Y. 14304

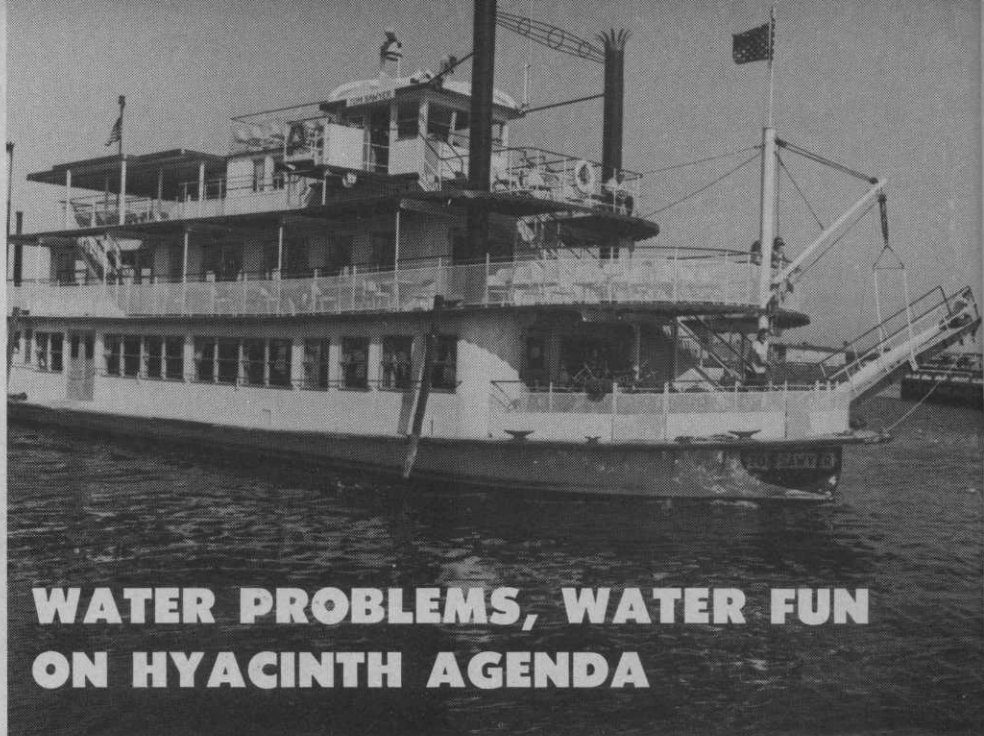
Please send literature on  Saw Chain  Accessories

Name \_\_\_\_\_

Address \_\_\_\_\_

Dealer Name \_\_\_\_\_

Address \_\_\_\_\_



## WATER PROBLEMS, WATER FUN ON HYACINTH AGENDA

Chartered for an evening cruise is the Tom Sawyer, a true riverboat.

Aquatic weeds have become a national concern in the weed control industry. Yet only one organization—the Hyacinth Control Society—makes control of all noxious aquatic weeds its total program.

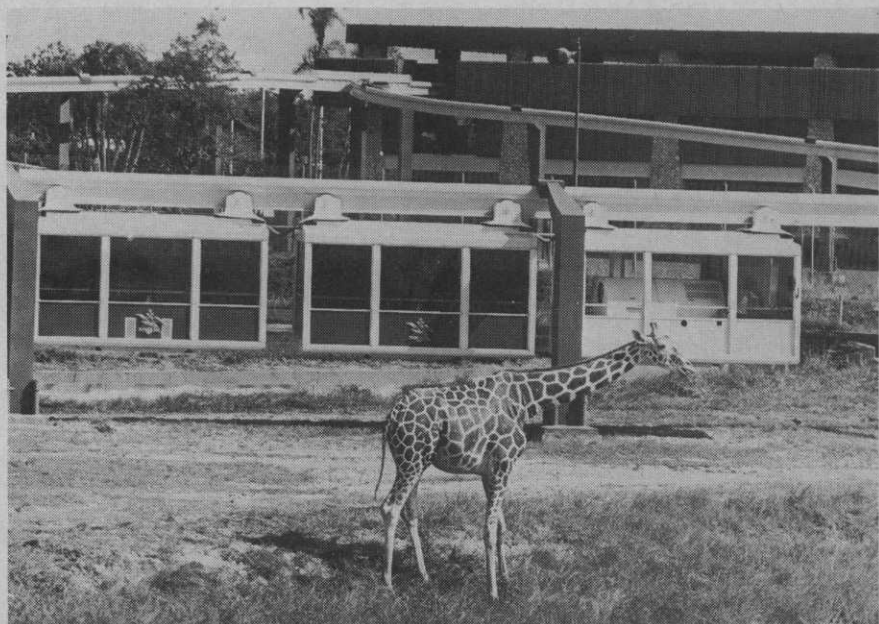
Founded in 1960, this specialized group of weed control specialists includes industry, educational, and government research, development, and sales members. The 1971 meeting promises to be the most sophisticated to date. It will be headquartered at the Manger Motor Inn, Tampa, Fla., July 11-14.

Efforts are being made by the group to see that anyone in the nation with a commercial concern for aquatic weed control be encour-

aged to attend.

Stanley Abramson, president of the group and associated with Southern Mill Creek Products Co., Inc., at Tampa (P.O. Box 1096), has a program developed which will combine both control procedures and research with practical application in a public climate where more and more restrictions are being demanded concerning pesticide use.

Family groups have long been a characteristic of this particular Society annual meeting and arrangements this year will include special programs for them. On the agenda for family and guests as well as members will be side trips to Busch Gardens, an evening on a true,



Another entertainment feature is a tour of world-famous Busch Gardens.

## Don't Forget the Sulphur For Turfgrass, Says Expert

For every five pounds of nitrogen applied to turfgrass, one pound of sulphur should be added, according to Dr. J. D. Beaton, Director of Agricultural Research of The Sulphur Institute. Writing in *The Sulphur Institute Journal*, Dr. Beaton stresses that high rates of nitrogen fertilization, a frequent practice in turfgrass management, greatly increase the need for sulphur. Unless sulphur is deliberately included in turfgrass fertilizer programs, serious growth deficiency may occur.

Pale green or yellow blades, particularly on the young growth, can be a symptom of inadequate sulphur. Since nitrogen and iron deficiencies have similar symptoms, plant analysis may be necessary for positive identification of sulphur deficiency, Dr. Beaton notes.

Research in Washington State, British Columbia, Florida and other locations have demonstrated that growth, color and density of turfgrass were improved with applications of sulphur, particularly when high levels of nitrogen fertilizer were used. The incidence of several turfgrass diseases was also reduced.

Headquarters for the annual Society sessions will be the Manger Inn, located on the riverfront.

chartered river boat, and the usual recreational features of the Tampa area.

Arrangements have been made for a reduced rate at the Manger Motel (200 Ashley Drive, Tampa, Fla. 33602). Convention rates will be

\$12 single and \$17 double or twin. Reservations may be made direct with the hotel.

Meeting details are available directly from Abramson or Secretary Robert J. Gates (Box 508, Floral City, Fla. 32636).

## Haul your machines on a Miller **RAMP CHAMP** then put it to work

Two styles of RAMP CHAMPS in 2-axle or 3-axle models . . . capacities to 18,000 pounds . . . haul your equipment to the job, then tag-a-long to the nursery to earn its keep hauling big loads of stock, sod or other gear. Miller-engineered suspension gentles the ride, keeps b & b stock intact. Put muscle to work for more profit. Muscle from Miller. Write for FREE TRAILERING GUIDE.

Miller's the one with **useability**



**MILLER**  
**Tilt-Top TRAILERS**

460 South 92nd Street Milwaukee, WI 53214