

Special for This Issue

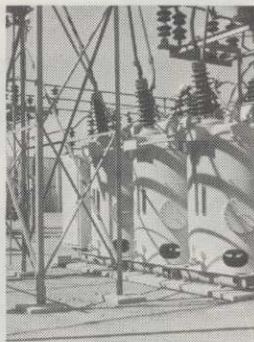
- There's More Than Power in Arizona Public Service Co.** 12
This Phoenix-based utility beautifies its facilities to save money and to please people.
- Norman V. Holmes, Inc., Specializes in Tree Maintenance** 18
Stabilized prices, budget-fitting services shape the reputation of this tree care company, content with letting others plant and remove.
- Seven Important Steps to Prescription Brush Control** 22
Hyland Johns, vice-president, Asplundh Tree Expert Co., outlines trends in right-of-way maintenance and how to reduce costs.
- How 'Thistle Down' Turned into a Football Field** 26
Custom applicator Don Bohnke tells of his successes with Dacamine and dicamba on the Hoagland, Ind., high school field.
- There's Help From Above for the Golf Course Superintendent** 32
A helicopter can be utilized economically to apply a fungicide to a golf course. TUCO Products Co. tells how.
- Bill Colburn's Weed Machine** 38
Homemade weed rig gives ultimate in drift control and saves Florida nursery a bushel of money.

Regular Features

- Editorial: *Upon Checking Your Pulse and Ours* 8
- Letters to the Editor 10
- Industry People on the Move 37
- Sod Industry Section: *Research on seed field burning in Oregon* 40
- New Products 42
- Meeting Dates 49
- Insect Report 52
- Trimmings 54
- Classifieds 54
- Index to Advertisers 55

The Cover

Realize it or not, the cover is a picture of an electrical power substation. At right is proof of what's inside the attractive wall screen. The wall comprises 168 pre-cast concrete panels, 20 feet high. The substation belongs to Arizona Public Service Co. The decorative wall is the latest example, says Walter T. Lucking, APS board chairman, "of our continuing effort to beautify our facilities wherever it is feasible to do so."



WEEDS TREES and TURF®

Volume 9, No. 5

May, 1970

Gene Ingalsbe
Editor

Arthur V. Edwards
Editorial Director

A. J. Michel
Advertising Production

Hugh Chronister
President and Publisher

Dan M. Humphrey
Vice-President, Advertising

Roy Bever
Director of Circulation

ADVERTISING SALES OFFICES

Cleveland, Ohio 44102
9800 Detroit Ave./216+631-6468
William Schmunk

Chicago, Illinois 60601
333 N. Michigan Ave./312+236-9425
John Kielp

**Shawnee Mission (Kansas City),
Kansas 66202**
6811 W. 63rd St./913+722-5900
Austin Schnacke

New York, New York 10017
757 Third Ave./212+421-1350
Russell Bandy

Columbus, Ohio 43212
1350 W. Fifth Ave./614+486-9638
James Murney

Lansing, Michigan 48906
4415 N. Grand River/517+372-5254
Paul Bundschu

Los Angeles, California 90005
The Eschen Company
3142 Wilshire Blvd./213+382-8391
Henry Eschen

San Francisco, California 94104
The Eschen Company
57 Post St./415+781-7440
Al Pierce

WEEDS TREES and TURF is published monthly by The Harvest Publishing Company. Executive, editorial headquarters: 9800 Detroit Ave., Cleveland, Ohio 44102.

Single Copy Price: 50 cents for current issue; all back issues 75 cents each. Foreign \$1.00.

Subscription Rates: WEEDS TREES AND TURF is mailed free, within the U.S. and possessions and Canada, to qualified persons engaged in the vegetation care industry and related fields in controlled circulation categories. Non-qualified subscriptions in the U.S. are \$7.00 per year; Canada and other countries, \$10.00 per year. Controlled circulation postage paid at Fostoria, Ohio 44830.

© The Harvest Publishing Company, 1970

Member Business Publications Audit

