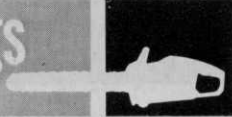


trimmings



MANUFACTURERS have considered nearly every obstacle that could be encountered while mowing. Yet a new one cropped up early one morning this summer at the Holiday Inn in Culpeper, Va. The mower was stopped cold in its tracks by a 300 lb. black bear.

The mower operator couldn't be reached for comment.

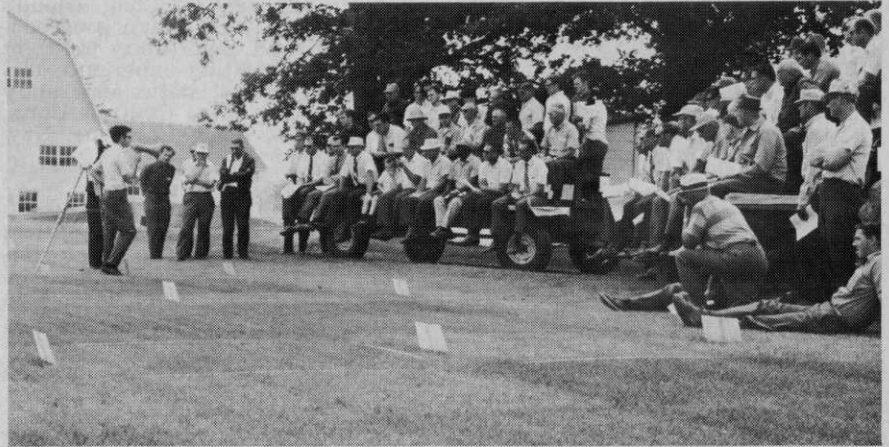
* * *

"A TROPICAL BEAST could Solve Our Lake Worry," reads a headline in the Auckland, New Zealand Star. Auckland botanist V. J. Chapman suggests bringing in the tropical manatee to eat the weeds.

The headline probably did solve the lake worry for many—who are now going somewhere else to have fun.

* * *

IN FRANCE, where folks have almost forgotten what water tastes like, there is concern over how much roaming the automobiles have been doing, and, in the process, killing off the citizenry. All too often the auto and its occupants have come out second best trying to escape from the French hallmark, tree-lined roads. To reduce the slaughter, the worst in Europe, the government has ordered the cutting of trees along hundreds of miles of



Turf response to different fertilizer application rates was discussed by Michigan State turf specialist P. E. Rieke during the University's Crop and Soil Sciences Field Day recently. Phosphorus tends to accumulate in the surface layer of soil, he said, and considerable leaching of potassium may occur when fertilizers are applied to the surface of sandy soils. The rate and distance of phosphorus movement in soils is small and normally not important because of its low solubility in soil water," he said. In test plots on sandy soil, some potassium leached beyond the 10-inch depth. Irrigation increases leaching. Such extreme leaching would not likely occur in soils with higher clay content because they would have sufficient capacity to hold the potassium.

national routes and the removal of hundreds of trees within cities.

As the New York Times concludes: "The assumption that when an automobile hits a tree it's the tree's fault is quintessentially French."

* * *

JOE McDERMOTT, president of the Midwest Turfgrass Growers Association, has issued a call for an improved sod cutter blade. "Surely there is someone in our industry somewhere who has a better blade made of better steel—or hard-sur-

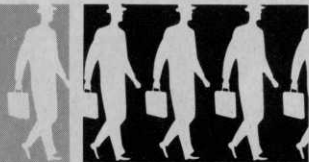
facing process—or something that can help us," he said. The blades are expensive and wear out rapidly in soil with gravel and rocks in it.

For the benefit of Michigan's muck or peat sod farmers, a rock comes in various sizes and shapes and is hard like concrete.

* * *

LESTER ASPLUNDH, board chairman of Asplundh Tree Expert Company, is given credit for kicking a football 100 yards. He also admits that on another occasion, he caught his own punt.

industry people
on the move



NATIONAL GOLF COURSE DESIGN AND CONSTRUCTION COMPANY, a Pompano Beach based firm, has appointed Julius Boros, two-time U.S. Open Champion as its exclusive consultant on golf course architecture. Boros teams with Frank Batto, widely known designer. Officers of the year-old company are John R. Doran, president; Frank Batto, vice-president and general manager; Santo Madrazo, secretary-treasurer; and Jack Culbertson, sales representative.

* * *

LOFT'S PEDIGREED SEED COMPANY has appointed C. M. "Brownie" Brownell as head of production and development for special proprietary seed products in the Pacific Northwest states. In addition to his new duties, he will continue to serve Great Western Seed Company as vice-president and assistant general manager.

* * *

RICHARD J. PAHL has been named manager of special products for Great Western Seed Company. He will handle the research, production and distribution of spe-

cial ornamental products for ultimate sale through retail outlets in the U.S.

* * *

DAVID T. McLAUGHLIN has been named president and chief operating officer of Toro Manufacturing Corporation, Minneapolis. McLaughlin, 38, resigned the presidency of Champion Packages Company, subsidiary of U.S. Plywood-Champion Papers, Inc., business group to accept the Toro post.

* * *

ROBERT E. SCOBEE of Fort Wayne, Ind., has been honored by the Upjohn Company for outstanding sales achievement in 1969. One of four to be honored in the agricultural chemicals division, Scobee is a member and former secretary of the Indiana Golf Course Superintendent's Association and a director of the Midwest Turf Association.

* * *

EUGENE A. SNYDER is the new president of Amchem Products, Inc. He succeeds Gerald Romig, who continues as chairman.

* * *

FREDERICK R. MICHA, newly appointed vice-president of sales for Monroe Tree Surgeons, Inc., Rochester, N.Y. has announced these appointments: **STEPHEN A. FRIEDMAN**, supervisor of the landscape department; **GLEN F. HOFFMAN**, arboriculturist; **ALBERT T. AY-LING**, arborist; **WILLIAM A. DYKSTRA** and **ERIC W. GILLETTE**, spray supervisors.