

West Point Products of Hahn, Inc., Evansville, Ind., offers a 6' wide golf course vacuum for easy grooming of turfgrass, grass clippings, paper, and other debris. Called the Aeri-Vac, the unit also features adjustable height and head openings, a six cubic yard capacity trash hopper with a two-by-three-foot hinged rear-access door for hand-dumping large litter from the driver's seat of the tow vehicle by a hydraulically powered dump control. It is designed to clean and groom up to five

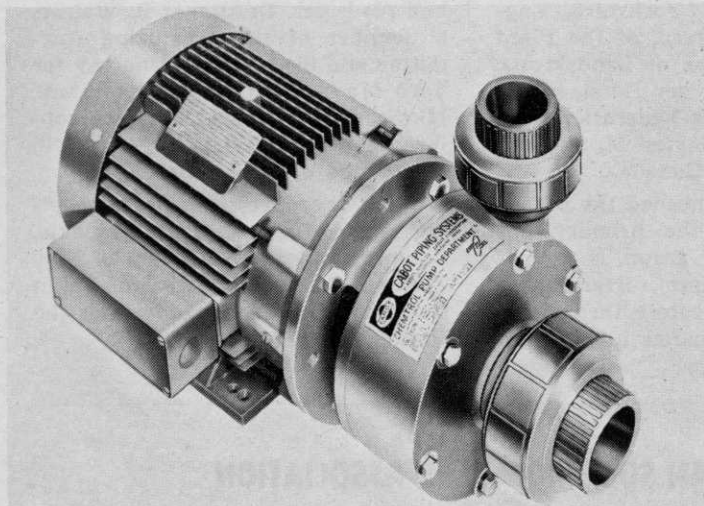
acres per hour, and utilizes a ball-hitch coupling between the blower and catcher assemblies. Manufacturer claims quick, one-man PTO tractor hook-up is accomplished with a three-point hitch and universal drive shaft. The Aeri-Vac weighs approximately 1500 lbs., is also equipped with high flotation tires, and can conveniently operate at up to 10 mph on level surfaces. For more details, circle (701) on reply card.

New Products

Sabre Saw Chain, Inc., Lewistown, N. Y., manufactures Sabre 16, a saw chain designed as a replacement chain for mini-saws such as the Power Mac 6. Available in reels and cut lengths for 12" and 16" guide bars, manufacturer claims it is the first standard replacement saw chain introduced for saws using 1/4" pitch chain. For more details, circle (704) on reply card.



Premier Peat Moss Corporation, New York, N. Y., introduces its Spagmos Three-Way Mulch. Unlike sawdust and wood chips, it does not rob the soil of nitrogen, manufacturer claims. It is said to be free flowing, resilient and porous. Product is 98% organic and contains pH4. Two to four inches is sufficient for gardens; four to five inches around newly planted trees. For more details, circle (705) on reply card.



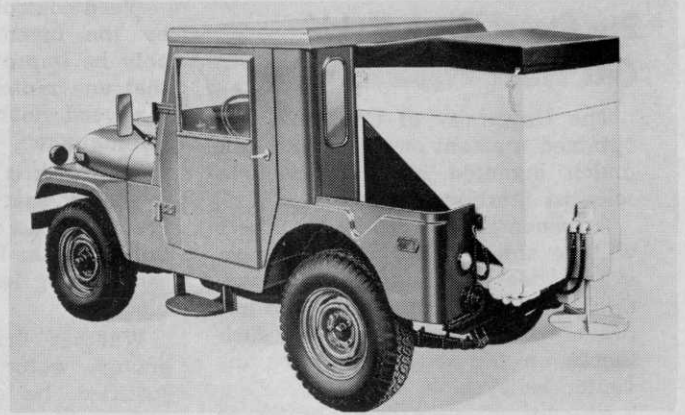
Cabot Piping Systems, Louisville, Ky., has available a new line of corrosion-resistant centrifugal pumps for handling aggressive liquids. Called Cabot/Chemtrol CP-3000, the close-coupled pumps come in polyvinyl chloride or polypropylene casings in seven models and sizes, ranging from 1" suction with 3/4" discharge and 3" impeller to 3" suction with 2 1/2" discharge and a 6 1/2" impeller. Motor sizes are from 3/4 to 10 HP, and capacities from 35 to 200 gpm. Other features include enclosed fan-cooled integral frame heavy-duty motors, Viton and ceramic-constructed mechanical seals, stainless steel motor shafts and mechanical seal springs. For more details, circle (708) on reply card.



Generac Corporation, Waukesha, Wis., announces its new lawn and garden tractor-mounted alternator. The light-weight unit provides portable AC power for operating power tools, pumps, floodlights and saws, as well as an economical method of obtaining home stand-by electrical power, the manufacturer claims. It comes in two sizes: The 2400-watt, Model 5678 unit provides 115 volts of AC power, and the Model 5679 produces 115/230 volts of AC power. Both are equipped with Generac's revolving field alternator design, and can handle surges 25% above nameplate rating in addition to having high temperature insulation. For more details, circle (709) on reply card.



Bowie Industries, Inc., Bowie, Texas, introduces the Bowie Imperial 2500 Hydromulcher, featuring a 2,500-gal. capacity extra-thorough agitation and central controlled spraying tower. The unit is designed for fast, simultaneous application of seed or sprigs, fertilizer wood fibre and water on steep slope, roadway, public works, reforestation, golf course, park, home lawn, and housing project terrains. It is equipped with the patented Bowie pump. For more details, circle (702) on reply card.

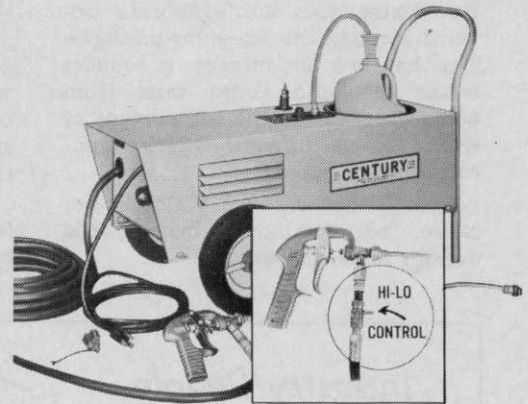


Central Engineering Company, Inc., Milwaukee, Wis., announces a new AUTO-SPREADER, Model A-100. Unit is a self-powered, self-contained, portable chemical and material spreader, holding one cubic yard of material. It can be easily mounted in the cargo area of a small service vehicle, or attached to a tractor three-point hitch. It is equipped with an instant on-off control switch for spot spreading of paved and turfed surfaces. For more details, circle (703) on reply card.

LPS Research Laboratories, Inc., Los Angeles, Calif., produces a micro-thin lubricant-rust inhibitor said to provide two-year outdoor protection for all metals. LPS #3, less than two/10,000ths of an inch thick; can be used as a chain and conveyor lubricant, manufacturer claims. Complies with Mil Spec C-16173D (Grade 2). Harmless to rubber, plastic and paint. Available from 16-oz. aerosols to 55-gal. drums. For more details, circle (706) on reply card.



Century Engineering Corp., Cedar Rapids, Ia., has improved two models of its portable washer by adding a diaphragm valve to the incoming water line to eliminate pressure fluctuation and insure consistent distribution of cleaning concentrates. An exclusive feature is a high-low water pressure control, changing pressure from 500 to 70 lbs. For more details, circle (707) on reply card.



Ideal Crane Division, Bert Parkhurst and Company, Tulsa, Okla., now markets a small, rugged hydraulic truck-crane. It is designed for safe, one-man loading and unloading of engines, drums, tanks, boxes and other equipment—any lifting job too big for one man to handle without strain. A hydraulic jack is the heart of the lifting mechanism. This low-cost crane features 360-degree rotation, and can be mounted on any style truck body or on a loading dock. It replaces a fork-lift truck for many jobs when mounted on a floor dolly. The crane is manufactured in two sizes—1500 lbs. and 2500 lbs. capacities—and comes complete with truck mount and six-foot lifting chain. Available accessories include an appliance strap and a barrel chain to handle drums in either horizontal or upright positions. For more details, circle (710) on reply card.

