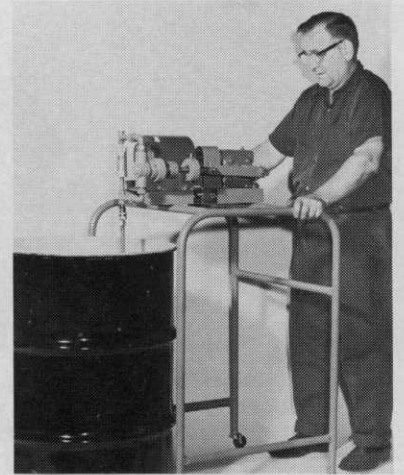




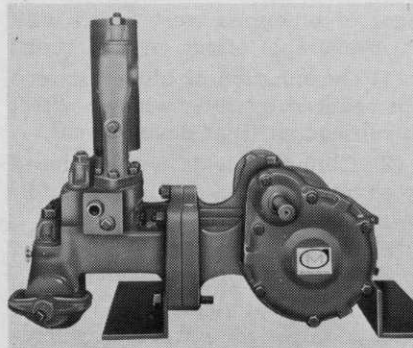
Hills-McCanna Division, Pennwalt Corporation, Carpentersville, Ill., announces a new portable chemical additive proportioning system called "Piggypak." It enables the proportioning of chemical additives direct from shipping containers. The pump is mounted on a tubular welded frame with casters. Pump, single-feed or double-feed, handles one or two different chemicals with viscosities to 1500 cp at rates from 0.07 to 28.5 gph feed and at pressures up to 1000 psi. For more details, circle (701) on reply card.



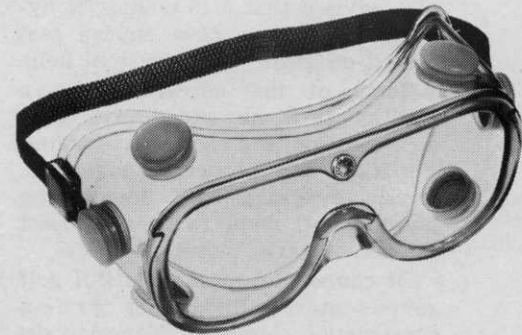
New Products Useful in the



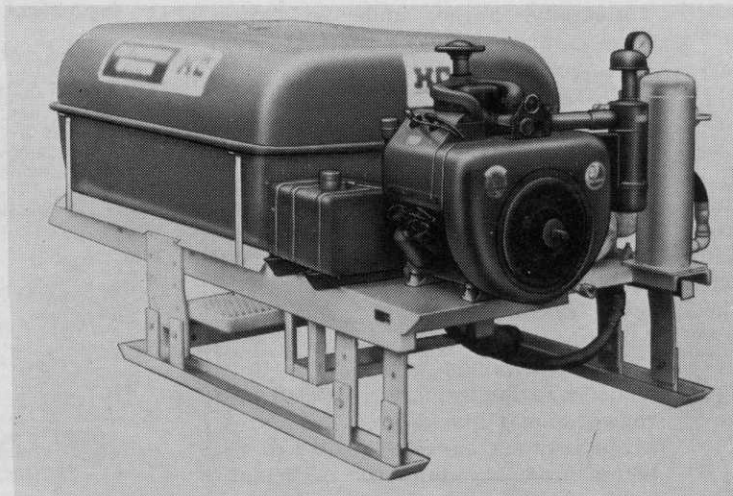
Smith Welding Equipment Division of Tescom Corp. of Minneapolis has developed a new Powder Braze Torch for high-speed, high quality hard surfacing, brazing, build-up, and welding. It features a powder flow selector dial, which provides the right amount of alloy powder for job being done. Reduces need for on-off operation of powder flow control lever. For more details, circle (703) on reply card.



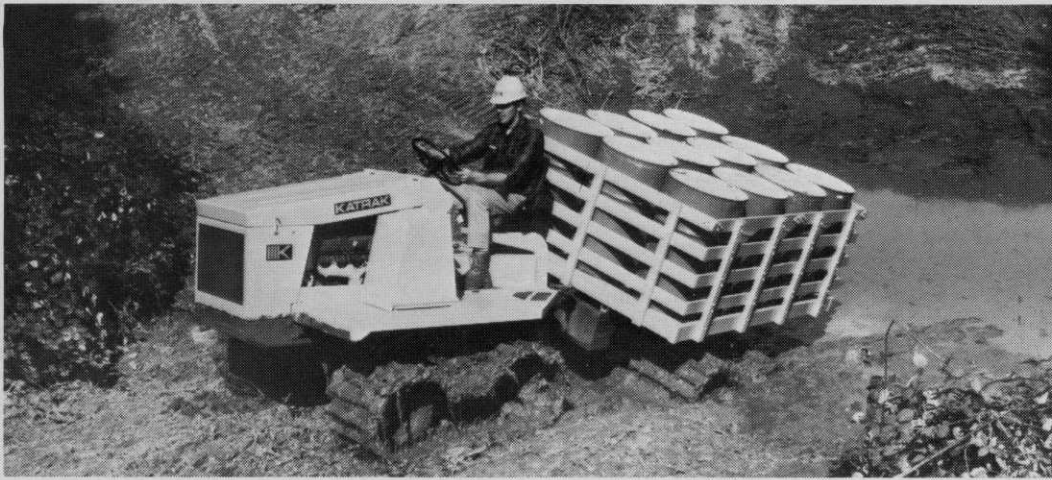
ITT Marlow, Midland Park, N.J., offers a new high-pressure piston pump line. Its "Piston-Flo" line can deliver from 5 to 50 gallons of water per minute at pressures from 400 psi to 1000 psi. Available in heavy-duty duplex and triplex designs. New line called extra-heavy constructed, attractively priced, compact, easily installed and maintained. For more details, circle (704) on reply card.



Glendale Optical Co., Woodbury, N.Y., has developed a replacement lens for safety goggles that's designed to inhibit fogging caused by extreme temperature variations. Fog-Ban is made of impact-resistant plastic in one-piece construction, using two lenses hermetically sealed in a moisture-controlled chamber. Meets requirements of U.S.A.S. Z87.1-1968 for flexible safety goggles. For more details, circle (705) on reply card.

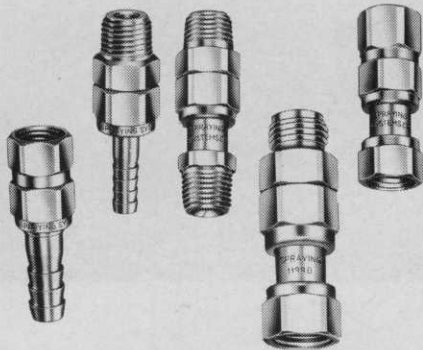


Hart-Carter Pacific Corp., San Jose, Calif., announces a line of high-pressure, general-purpose, chemical sprayers with high strength, corrosion-proof tanks of fiberglass. Sprayer types include trailer, skid, three-point mount, saddle tank, estate and greenhouse, ranging from 25 to 500-gal. capacity. Features include large, deep hatch openings for easy filling without spilling and exclusive stainless steel suction strainer on most models which permits cleaning the strainer without losing prime. For more details, circle (709) on reply card.

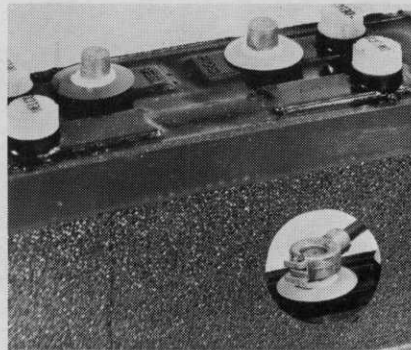


Katrak Vehicle Co., Canby, Ore., claims its revolutionary 4-track drive Katrak K-60 hauls heavy loads through knee-deep swampy or sandy areas with ease. Carries payloads of up to 2½ tons and travels at speeds to 25 mph. Powered by 302-cubic-inch, 200 hp Ford industrial engine. Turning radius is 11 feet. Eight speeds forward, two reverse. For more details, circle (702) on reply card.

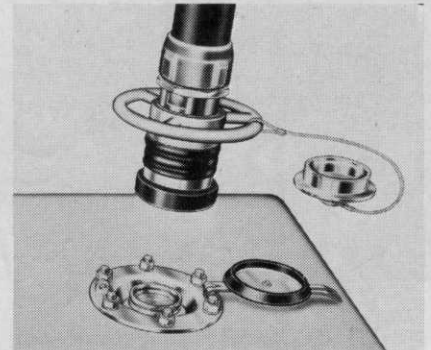
Aquatic Weed Control Industry



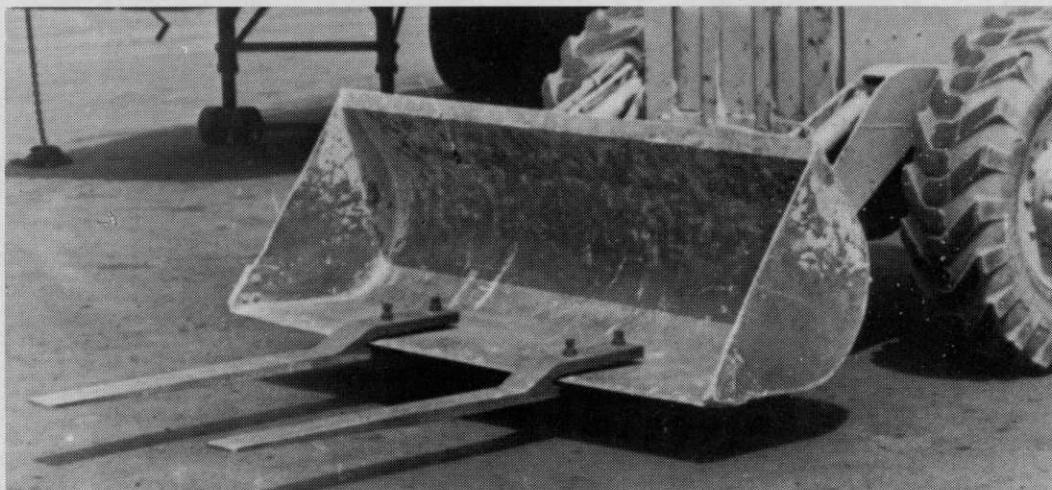
Spraying Systems Co., Bellwood, Ill., has a new complete line of No. 11990 series swivel connectors to provide free swiveling connection of hose and spray guns at pressures up to 800 psi. Connectors are ¼", ⅜", and ½" NPT and ¼" NPS male and female inlet and outlet connections, with .281" and .406" diameter hose barb sizes. Brass with nylon bearing washer. For more details, circle (706) on reply card.



Montooth Battery Products, Springfield, Ill., claims its battery saver increases battery life 50% by preventing corrosion. Vinyl accessory fits all standard automotive and truck battery posts, guaranteed to prevent corrosion formation or buildup if installed as directed. Field-tested four years. For more details, circle (707) on reply card.



Aeroquip Corporation of Jackson, Mich., has a new fast-fueling coupling. It allows equipment to be fueled in less time than conventional fueling methods. Coupling is safer. Fuel remains sealed at all times, reducing potential fire hazard. Tank half of coupling usually can be installed in a position accessible from ground level. For more details, circle (708) on reply card.



J. E. Coleman Co., New York, N.Y., is marketing a lighter-weight detachable fork for shovel loaders. "Scoop Fork" Model J-4 is 4" wide rather than 5" and 20% lighter in weight. Higher-alloy steel retains 4,000-lb. capacity rating. Fork has 46" carrying length. For more details, circle (710) on reply card.