



SOD INDUSTRY SECTION

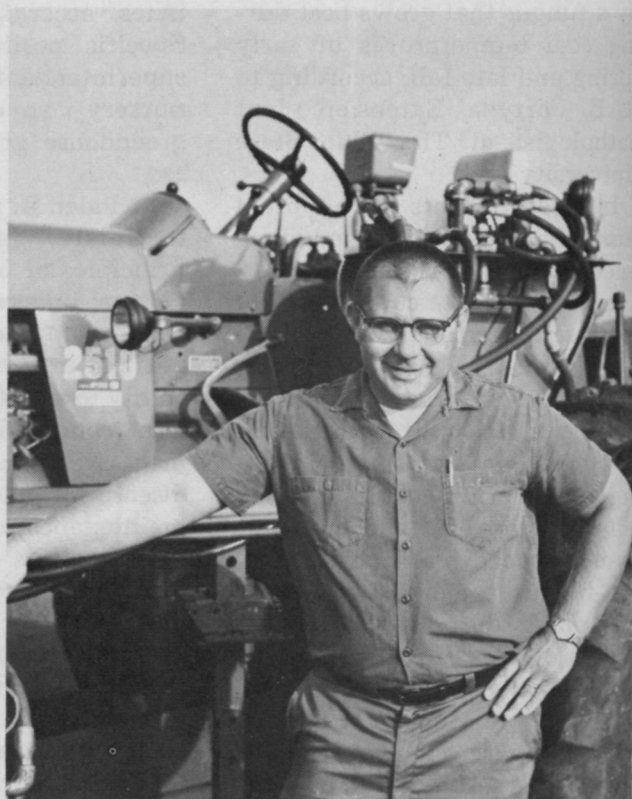


## Second Field Day of ASPA Is An Action Spectacular

Few national organizations in their early days have matched the progress of the year-old American Sod Producers Association. Organized formally in mid-July of last year, this group has staged 2 major national summer field days and one winter annual meeting.

Their first big field demonstration was in July, 1967, at Lansing, Mich. The latest, held July 30 at Shamrock Turf Nurseries, Hanna, Ind., was a major production. Practically every builder or supplier of sod production equipment was on hand to demonstrate available equipment for the industry. Well over 400 growers and commercial representatives attended. Don Morrill, president of Shamrock, served as host and Dr. William Daniel, Purdue University, as emcee. Rain threatened during the

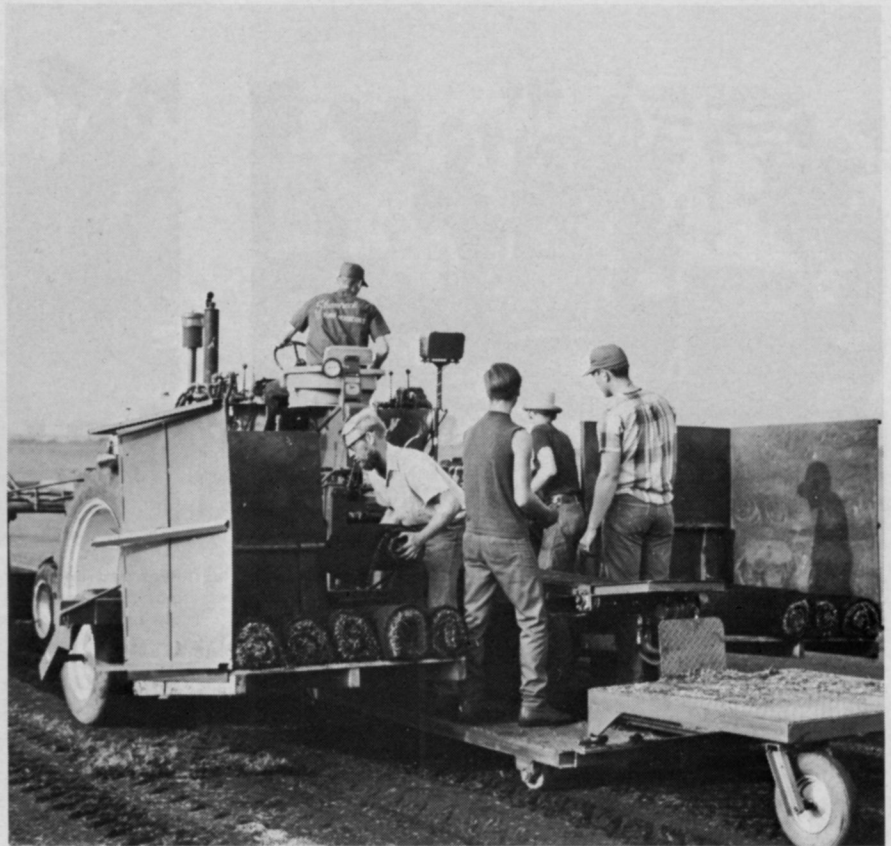
Don Morrill, president of Shamrock Turf Nurseries, Hanna, Ind., served as host for the 2nd ASPA national field day.



morning and a rain shower just after lunch dampened spirits but sunshine prevailed for the equipment demonstrations which proved to be the highlight of the event.

President of the group, Ben O. Warren, Warren Turf Nurseries, Inc., Palos Park, Ill., called officers and directors together for a short business meeting early in the day. Biggest concern apparently is how to enroll more growers as members of the new national organization. Membership at present is just more than 100 and more are needed to support new activities which are planned for ASPA (see WTT editorial, page 4).

The Shamrock operation which is a model for production of quality sod features acreage leveled



Sod roller was designed and built by Don Morrill for use on Shamrock Turf farm. Unit as yet is not commercially available.



**GET A HEAD START**  
ON  
**GROUND MAINTENANCE**

with **OREGON GROWN** fine leaf  
RED  
**FESCUE**

- FINE TEXTURED—Companionable with other grasses.
- DURABLE—Resist heavy traffic.
- WIDELY ADAPTED—More tolerant to adverse conditions.
- PRODUCE DENSE SOD—Inhibits weed growth.
- DEEP ROOTED—Drought resistant.
- ECONOMICALLY MAINTAINED—Slow growing.
- LESS DEMANDING—On fertilizer requirements.

Information & Sample Packets Available on Request.

**OREGON FINE LEAF FESCUE COMMISSION**  
605 Weatherly Bldg. Portland, Ore. 97214

For More Details Circle (107) on Reply Card



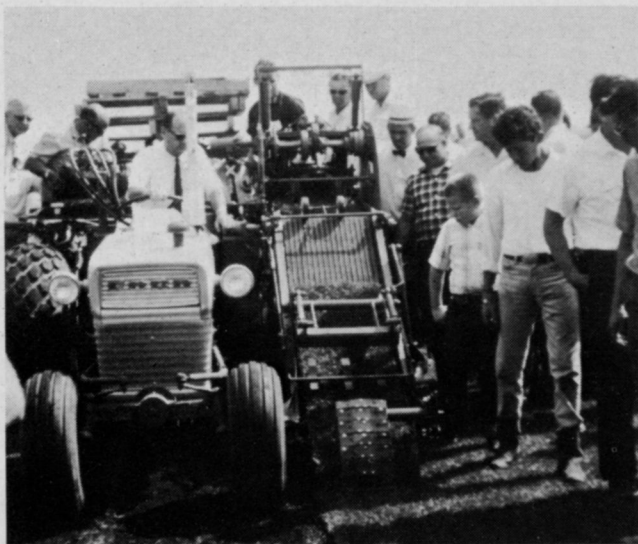
## HADFIELD AUTOMATIC SOD ROLLER PATENTED

*"Invented by G. HADFIELD, seated"*

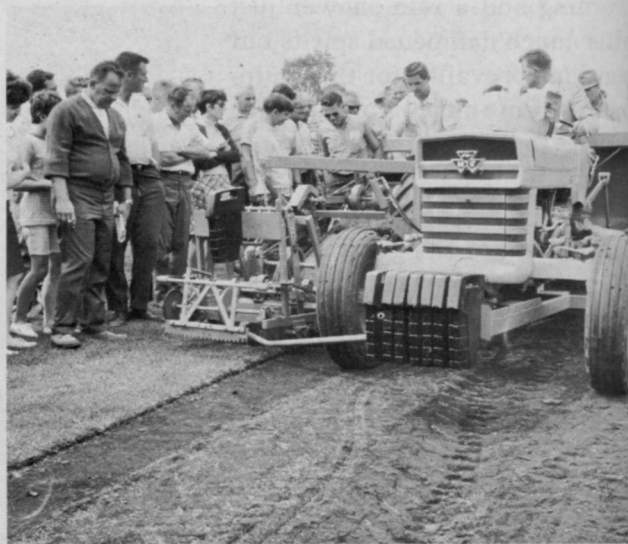
1. Attaches to any Ryan sod cutter
2. Sod plows will turn heavy mineral soil rolls easily to side as they have a pickup and roll action, and will not pull your cutter sideways
3. Reel to roll sod is ground driven so roll does not get ahead of reel
4. Remove sulky and roll sod by walking where fields are wet or short runs.

**HADFIELD SOD ROLLER COMPANY**  
4643 Sherwood, Oxford, Michigan 48051 Phone 313-628-2000

For More Details Circle (108) on Reply Card



John Nunes demonstrates NUNES sod harvester. This unit will handle either rolls or slabbed sod and has capacity for up to 1200 square yards per hour.



Ryan sod harvester demonstrated at ASPA field day is designed for major sod growers who use pallet method. Ryan also exhibited complete line of sod equipment.



Newest piece of sod equipment on display was Ryan sulky, roller attachment for standard Ryan cutter.



Side view of Don Morrill's sod harvester. Unit is designed to roll sod for pallets.

for drainage, complete wheel-move irrigation system, and a comprehensive marketing program. Morrill who is president and general manager of Shamrock has been active in ASPA since its inception and made a significant contribution in making sod acreage available for the national field day demonstrations.

Attendance was greater than expected by the officer and director group. They were encouraged by the interest of growers from 12 states, representing all sections of the country. In addition, more than 30 growers from Canada were on hand.

Next major event of the ASPA, according to Executive Secretary George Hammond will be the winter annual meeting. This session is scheduled for Miami Beach, Fla., January 19-24, in conjunction with the 40th International Turfgrass Conference and Show which is sponsored by the Golf Course Superintendents Association of America. Headquarters will be the Hotel Fontainebleau.