

Figure 1

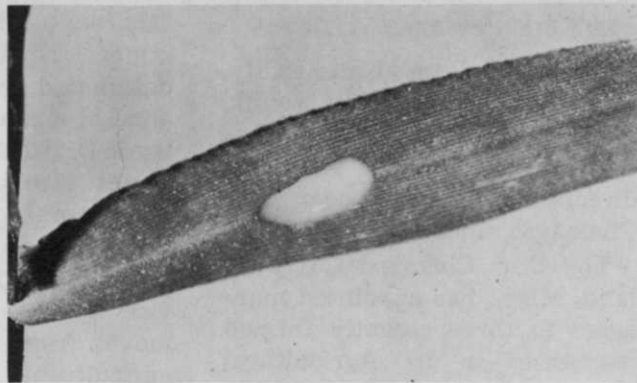


Figure 2

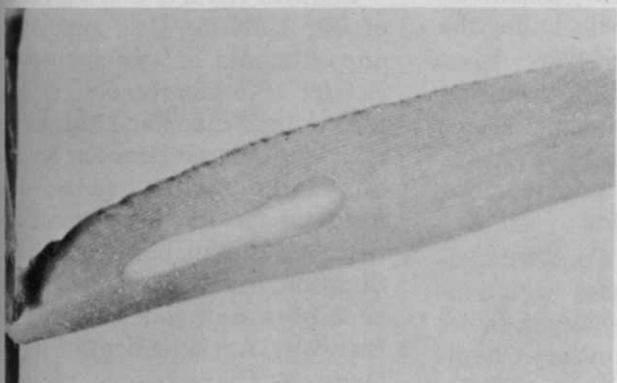


Figure 3

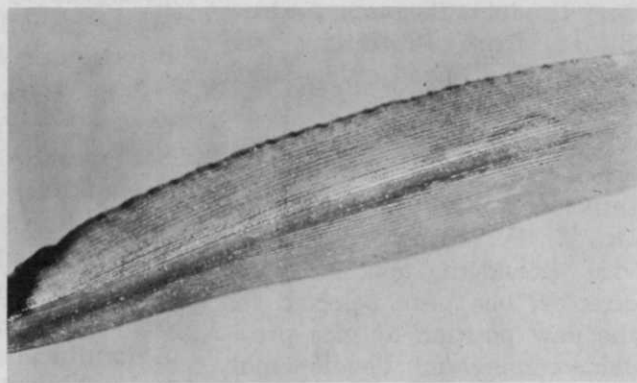


Figure 4

Photographs above, were taken at 25 to 30 second intervals to illustrate how T-MULZ AO2 emulsifier in an atrazine-water-oil mixture contribute to rapid spreading across weed surface areas for fast and complete kills of plants.

New Spray Emulsifier Designed for Spray Oils

On the market now is a new emulsifier, T-MULZ/AO2, designed especially for use with superior spray oils.

According to the manufacturer, Thompson-Hayward Chemical Company, Kansas City, Kan., T-MULZ was designed primarily for an atrazine-water-oil mixture. It has been widely tested and used during the past year, both for ground and aerial applications. The new emulsifier contributes to the rapid spreading of oil-atrazine across weed surfaces for fast and complete plant kills.

Comprehensive product studies have demonstrated unusual emulsifier characteristics in the application to T-MULZ AO2, particularly with respect to its spreadability, stability, solubility and performance characteristics.

Beck's LAWN-O-MATIC PLUGGER-SPRIGGER



Revolutionary NEW
GRASS-PLANTING
MACHINE

\$795.00
f.o.b.

- Plants plugs or sprigs.
- Cuts labor by 90 percent or more.
- Plants Zoysia, Bermuda, Centipede or St. Augustine.
- Plants up to 3 acres per day.
- Rugged, trouble-free design.
- Self-propelled . . . easy to maneuver and load.
- Leaves lawn smoother—firmly rolled.
- 1, 2 or 3 row models available.

For further information write:

BECK MANUFACTURING CO.

Box 752 E

Some Distributorships Available.

Auburn, Ala.