

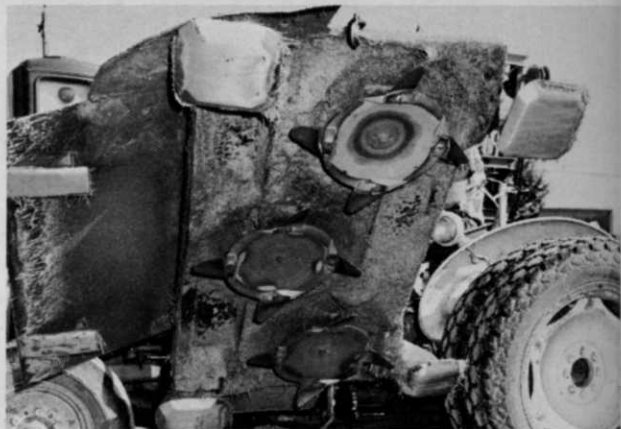
or distributor will be allotted a time slot for operating equipment. Agronomist William Daniel, Purdue University, will serve as master of ceremonies.

The ASPA Field Day follows, by a day, the Purdue University Summer Turf Day, scheduled for Lafayette, Ind., July 29. For growers who are driving, Hanna, Ind., is located about 80 miles north of Lafayette, Ind., on US Hiway 30 between Plymouth and Valparaiso. Shamrock Turf Nursery is one-half mile north of US Hiway 30 on Indiana Route 39, and 15 miles south of the Indiana toll road, when using the exit for Route 39. For those growers who may be flying private planes, the nearest airport is at South Bend, Ind., some 35 miles north of Hanna. Midway Airport at Chicago, Ill., is approximately 65 miles from Hanna. Motels are available at Plymouth and Valparaiso for overnight visitors. A small motel is also located at Hanna.

Close-up of shielded rotary mower in operation under Green Valley irrigation pipe.



Rotary mower in tilted position showing mounting of the three 18-inch turbo cones.



Special Type Mower For Irrigation Pipe

Green Valley Turf Company, Littleton, Colo., has solved the common problem of mowing under irrigation pipe. Manager of the 400-acre sod farm, J. R. "Rusty" Wilkins, and K. C. Ensor, president, designed a shielded irrigation pipe line mower to supplement the gang mower.

Basically the unit is made up with three 18-inch Jacobson turbo cones. Mounted on a regular tractor it can be used to mow at any time without moving irrigation pipe.

Green Valley irrigates at a rate approaching 2 million gallons daily from wells. Irrigation pipe of 1 1/4" and 2" sizes are used. Wilkins says the system consists of 5500 heads of 1 1/4" size on as many pieces of pipe, and 2500 additional heads of 2" size. Rainbird sprinklers are automatically sequenced by time-control valves.

Beck's **LAWN-O-MATIC** **PLUGGER-SPRIGGER**



Revolutionary **NEW**
GRASS-PLANTING
MACHINE

\$795.00
f.o.b.

- Plants plugs or sprigs.
- Cuts labor by 90 percent or more.
- Plants Zoysia, Bermuda, Centipede or St. Augustine.
- Plants up to 3 acres per day.
- Rugged, trouble-free design.
- Self-propelled . . . easy to maneuver and load.
- Leaves lawn smoother—firmly rolled.
- 1, 2 or 3 row models available.

For further information write:

BECK MANUFACTURING CO.

Box 752 E

Some Distributorships Available.

Auburn, Ala.