

environment chambers, and the school's turf research plots.

On Thursday, Aug. 11, speakers will discuss "Present and Future Impact of Highway Beautification on the Nursery Industry."

A ladies program is planned, and family entertainment will be available at Purdue and in Lafayette.

Write for registration information to Dr. Donald L. Schuder, Agriculture Hall, Purdue University, West Lafayette, Ind. 47907.

Weed Control Helps Young Trees Endure Drouth

As many tree planting projects fail from inadequate control of weeds as from improper planting techniques, inadequate site preparation, or the planting of unadapted species.

Marvin W. Smith, Extension forester at the University of Minnesota, points out that in some seasons and in certain regions, precipitation can barely support tree growth. As a result,

he explains, unwanted vegetation on planting sites seriously threatens the young tree seedling which is forced to compete with weeds and grasses for soil moisture, nutrients and growing space.

Effective weed control in windbreaks, shelterbelts, Christmas tree plantings, and forest plantations can be accomplished through either mechanical cultivation or the use of herbicides.

Mechanical weed control methods do have the disadvantage of causing injury to root systems of trees, and they can be delayed because of wet weather. Repeated cultivations can be expensive.

Of the new selective chemical herbicides developed in recent years, Simazine and Amazine are perhaps the most popular, Smith says.

Simazine acts against a broad spectrum of grasses and broad-leaved weeds, and is safe for use around most trees and shrub species planted in windbreaks and forest plantations.

Chemagro Phytotoxicity Study Is Now Available

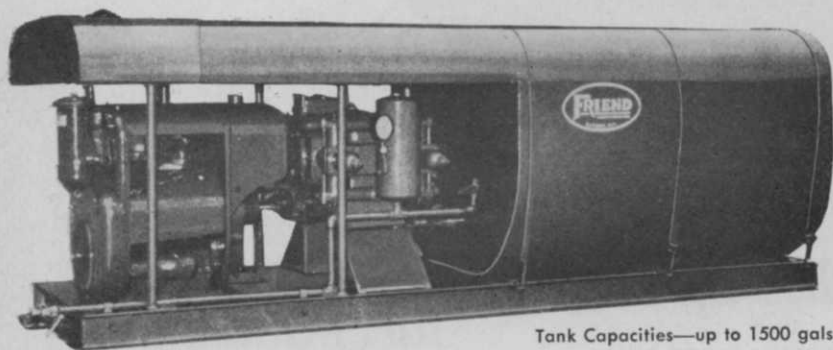
Phytotoxic effects of Dexon, Morestan, and Meta-Systox-R on a wide group of ornamentals are shown in a new book on a recently completed Chemagro Corp. study.

Plant tolerance toward the three chemicals is presented in the 48-page book, prepared by Monrovia Nursery Co., in cooperation with Chemagro. Research director Conrad Skimina of Monrovia, conceived and conducted the tests.

Dexon is a non mercurial fungicide; Morestan, a carbonate miticide; and Meta-Systox-R, a foliar-applied systemic. Over 800 varieties of ornamental plants and shrubs were tested, including azaleas, camellias, conifers, ferns, palms, and some broad leaf plants.

Copies of the book covering the joint study are available free to WTT readers. Write to Public Relations Dept., Chemagro Corp., P. O. Box 4913, Kansas City, Mo. 64120.

A FRIEND MAINTENANCE SPRAYER WORKS BEST FOR YOU!



Tank Capacities—up to 1500 gals.

★ DEPENDABLE

sturdy FRIEND construction (many parts are hand fitted)—means trouble-free performance in season and out. Direct, in-line drive, too—no sprockets or gears.

★ POWERFUL

big air-cooled Wisconsin or liquid-cooled industrial engines with more than adequate power and FRIEND high-pressure or two-stage centrifugal pumps, put spray material where you want it.

★ ECONOMICAL

heavy-duty overall construction, rugged engines and pump mean less down-time and lower maintenance costs . . . proven by actual performance since 1895.

Recommended for

Custom Sprayers	Roadsides	Golf Courses
Cemeteries	Rights-of-Way	Landscaping
Municipalities	Parks	Nurseries
	Airports	

FREE—Write for new Maintenance Sprayer Bulletin or further information to—

FRIEND MANUFACTURING CORP. / GASPORT, NEW YORK