

Business Administration Dominates Arborist's

Program for Mid-Winter Meeting Feb. 13-16

Five topics, each presented by a man who has acquired his administrative experience in the tree-care industry, will dominate the program when the National Arborist Assn., meets at the International Inn, Tampa, Fla., Feb. 13-16.

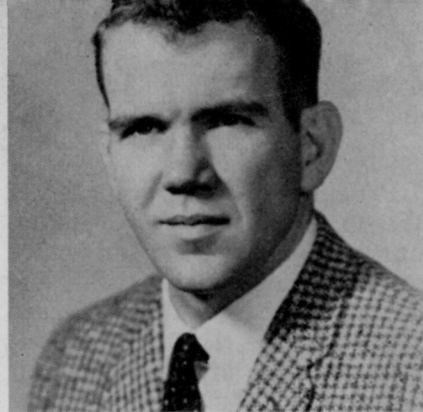
Of the eight subjects listed on the program, "Cost Studies on Some Tree-Care Operations," by George W. Goodall, Jr., Goodall Tree Expert Co., Portland, Maine, and "Bookkeeping Methods and Office Management," by Jan Smith, of Smith Tree and Landscape Service, Inc., Lansing, Mich., will be presented the first day.

Other topics to aid administrators are "Business Machines as Aids in the Tree Company Office," by John Z. Duling, of Duling Tree Expert Co., Muncie, Ind.; "Wage and Hour Law, Its Application to the Tree-Care Industry," by Henry A. Huettner, regional director,

Wage and Hour and Public Contracts Divisions, U.S. Dept. of Labor, Atlanta, Ga.; and "Recruiting Men and Good Employee Practices," by Dr. Melvin P. Reid, industrial psychologist associated with Byron Harless & Associates, Inc., Tampa.

Each day's session will present two of the administrative subjects with one other applying to a field subject such as "Making Water Wetter for Better Soil Penetration," which will be presented by Robert A. Moore, of Aquatrols Corp. of America, Camden, N. J.

"Labor Saving Tools and Equipment for the Arborist," by Fred C. Galle, director of horticulture, Callaway Gardens, Pine Mountain, Ga.; and another "Large Tree Moving and Tree Moving Equipment," by H. M. Van Wormer, of Van Wormer Tree Service, Inc., Richmond, Va., will be the final discussions.



Kevin Kelly, AAN's administrative assistant.

Kelly Joins AAN Staff

Kevin Kelly has been named American Association of Nurserymen Administrative Assistant, one of the three top staff positions of the Washington, D. C.-based organization. A native of Washington, he graduated from George Washington University in 1963.

Kelly worked part-time in the AAN office throughout his college career. He taught history and English in the Washington area after graduation. In December he returned to AAN headquarters to handle business and administrative matters.

For **Professional** **TURF MANAGEMENT**

GREEN-TEE GRANULES • FAIRWAY GRANULES
NITRO-GANO (All Natural Organic)
FINE & MEDIUM

The products designed with turf in mind

For the best in service and products consult your
local WILBUR-ELLIS COMPANY representative



Los Angeles: (213) RA 3-6793 • (714) LA 1-6683

Chula Vista: (714) GA 2-5321

Oxnard: (805) HU 6-9610