

Maryland Turf Expert Advises Overseeding Now

Best time to overseed thin or bare spots, or to seed new lawn areas, is in late August or early September, according to turf-grass specialist, Dr. Elwyn Deal, of the Department of Agronomy, University of Maryland.

Under most Maryland conditions, Dr. Deal says, seeding a mixture of two or more grasses is better than using a single variety. The University lists the most widely adapted mixture in Maryland as 40% Kentucky bluegrass, 40% Merion bluegrass, and 20% creeping red fescue.

If a quick cover is necessary, Dr. Deal suggests 5% redtop or ryegrass may be added to the mixture, but he warns that mixtures containing more than 5% should be avoided. Tall fescue can be used in play areas and in other areas where heavy use makes a coarse-textured grass acceptable.

Further information is available in Maryland Extension Bulletin 171, "Lawn Care in Maryland;" Agronomy Mimeo #2, "Lawn Grass Seed Buying Guide;" and Extension Leaflet #38, "Lawn Management Guide." Address inquiries for copies of these bulletins to Cooperative Extension Service, University of Maryland, College of Agriculture, College Park, Md.

Mallinckrodt Turf Guide Out

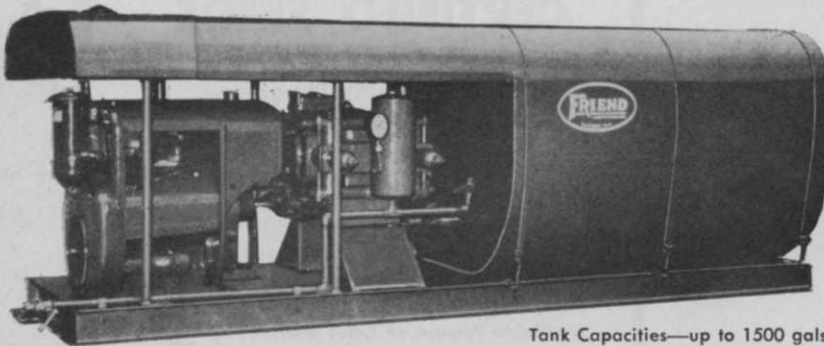
Control of 17 major turf diseases is discussed in the 48-page "Turf Pest Management Handbook," now available to turf managers upon request from Turf Products, Mallinckrodt Chemical Works, Box 5439, St. Louis, Mo. 63160.

With 20 color illustrations and updated turf disease and fungus identification keys, the booklet is said to have been prepared by leading turf authorities for guidance on many aspects of turf management.

Ohio Plans 25th Roadside Short Course, Oct. 3-7

Contractors and other professionals interested in roadside landscape design, construction, and maintenance are invited to attend the 25th annual Short Course on Roadside Development, Oct. 3-7. Sponsored by the Ohio Department of Highways and Ohio State University's Department of Landscape Architecture, the short course includes two days of meetings to be held at the Departments of State Building, in Columbus, Ohio. Contract seeding, promoting turf growth, and use of ureaform in the highway program are among subjects to be covered. Equipment displays and demonstrations are highlights of a two-day field trip also planned. Additional information on the short course can be obtained from Wilbur J. Garmhausen, Chief Landscape Architect, Ohio Department of Highways, Columbus, O. 43215.

A **FRIEND** MAINTENANCE SPRAYER WORKS BEST FOR YOU!



Tank Capacities—up to 1500 gals.

★ **DEPENDABLE**

sturdy FRIEND construction (many parts are hand fitted)—means trouble-free performance in season and out. Direct, in-line drive, too—no sprockets or gears.

★ **POWERFUL**

big air-cooled Wisconsin or liquid-cooled industrial engines with more than adequate power and FRIEND high-pressure or two-stage centrifugal pumps, put spray material where you want it.

★ **ECONOMICAL**

heavy-duty overall construction, rugged engines and pump mean less down-time and lower maintenance costs . . . proven by actual performance since 1895.

Recommended for

Custom Spraying	Roadsides	Golf Courses
Cemeteries	Rights-of-Way	Landscaping
Municipalities	Parks	Nurseries
	Airports	

FREE—Write for new Maintenance Sprayer Bulletin or further information to—

FRIEND MANUFACTURING CORP. / GASPORT, NEW YORK