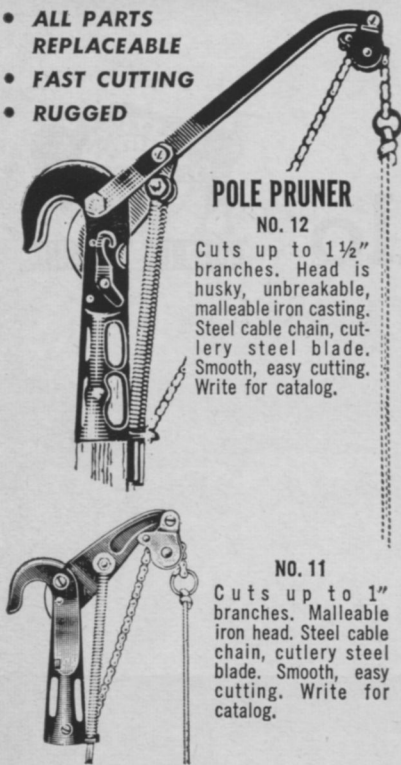


# Professional Tree Pruners

- ALL PARTS REPLACEABLE
- FAST CUTTING
- RUGGED

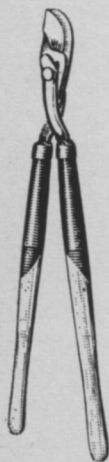


**POLE PRUNER**  
NO. 12

Cuts up to 1½" branches. Head is husky, unbreakable, malleable iron casting. Steel cable chain, cutlery steel blade. Smooth, easy cutting. Write for catalog.

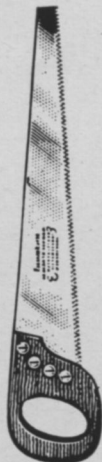
NO. 11

Cuts up to 1" branches. Malleable iron head. Steel cable chain, cutlery steel blade. Smooth, easy cutting. Write for catalog.



**LOPPING SHEARS**  
NO. 75

Heavy duty; fast, easy cutting compound lever loppers designed for utility use. Cuts up to 2" branches. Full line of loppers.



**PRUNING SAWS**  
NO. 1826

26" Sandvik Swedish steel blade. A professional saw. Full line of saws.



Send for complete catalog and prices.

**SEYMOUR SMITH & SON, INC.**  
Oakville, Conn., U. S. A.  
Sales Representatives  
**JOHN H. GRAHAM & CO., INC.**  
105 Duane St., New York 8, N. Y.

## WTT Mailbox

### Growing Pains

We are in business in east-central Illinois and are subscribers to *Weeds Trees and Turf*. We have been considering branching out into the lawn field and would like to have some information.

What we are primarily interested in, at the present time, is the type of pumping equipment necessary for general lawn treatment. We are mainly considering the application of insecticides, fungicides, and herbicides, and are wondering what type of pump is the most suitable and what type of storage capacity is necessary.

We prefer a pump driven either by an electric motor or gasoline engine and not one mounted to PTO. Please give us recommendations on pressures and gpm.

R. Morton Blair

The Dorite Company  
Charleston, Ill.

*We cannot in fairness make recommendations of specific equipment without getting involved in technicalities over which we have no control. However, we suggest reference to our December 1964 issue, in which a Supplier's Guide lists everything mentioned above. Inquiries to manufacturers will bring all the necessary information.—Ed.*

### Growth Retardant Query

At times articles have appeared in newspapers and magazines regarding the use of growth retardant chemicals, particularly in lawn areas.

I am writing to inquire about the progress and practicability of these chemicals inasmuch as I feel this may open a new field in the spraying business.

Do you propose to publish any information on this subject in your wonderful magazine, *Weeds Trees and Turf*? If not, would you please suggest to whom I may write to find information? I note in your January issue, U. S. Rubber, Chemical Division,

has a chemical for spraying trees.

Francis DeMarco

DeMarco Nursery  
Connellsville, Pa.

*The U. S. Rubber Co. advertisement you refer to appeared in our January issue and relates to MH-30T for retarding tree growth, and the company has done considerable work on the use of this chemical for turf-grass inhibition. We published an article on the chemical for this use in September 1963, and another article in August 1964 on the use of MH-30T on trees. We suggest you write to Mr. Otto Steinen, Sales Manager, Chemical Division, U. S. Rubber Co., Naugatuck, Conn., who may be able to provide you with more information.—Ed.*

### Bomardier Address

Would you please oblige us with the address of the Bomardier Snowmobile, Ltd., of Canada? We are very interested in their unit. Of course, we are subscribers to your informative and helpful magazine.

Neil A. Euting

President  
Midwest Aquatic Service, Inc.  
Oconomowoc, Wis.

*The address of Bomardier Snowmobile, Ltd., is Valcourt, Quebec.—Ed.*

### Supports Association Idea

I am a commercial weed control operator working in northern California and have read the article about the proposed national association for the custom spraying business. It would seem that this is a step in the right direction, and I would be interested in such an organization.

Bryant Washburn

Washburn Agricultural Service  
Davis, Calif.

*Weeds Trees and Turf welcomes expressions of opinions from its readers. Send ideas and comments briefly as possible to Charles D. Webb, Editor, Weeds Trees and Turf, 1900 Euclid Ave., Cleveland, Ohio 44115*