

be given. There are 1,100 native and introduced grass species in the U.S., Beach concluded.

Calling for more planning to handle the growing population and the resulting demands on turfgrass in the years ahead, Frank C. Stewart, of Hampden Memorial Estates, Denver, warned "The world is going to fall in on us in the form of population—an unplanned-for population. We need more basic research and study on turf," Stewart continued. "We'll need information on turf diseases which will be greater problems as metropolitan areas grow."

"If our population is doubled by 1980, we must prepare to care for larger areas of turf at lower unit costs and with the utmost water conservation, Stewart added. He concluded by urging the West to plan for additional parks and green belts in the city and increased development of private campgrounds in the mountains.

Morrison Steel's Roly-House Can Solve Storage Problem

An all-steel building said to provide safe storage for chemicals, fuels, equipment, and for other uses, is announced by Morrison Steel Products, Inc.

The prefabricated building can be quickly assembled with screw driver and pliers, Morrison says. All holes are predrilled and cadmium hardware is provided. The unit may be set up on the ground, but best results and protection

are attained if setup is made on a concrete slab floor.

Further details are available from Morrison Steel Products, Inc., by writing to P.O. Box 549, Buffalo, N. Y. 14240.

Mallinckrodt Has New Dead Spot and Crabgrass Controls

A new preventive control of spring dead spot in bermudagrass and a selective preemergence herbicide for crabgrass control is now available from Mallinckrodt Chemical Works. The products are named Spring-Bak and Pre-San, respectively.

Spring-Bak, a turf chemical for the prevention of spring dead spot, does its preventive work in the root-crown zones of the grass and is specially formulated to contain wetting and soil-penetrating agents. It is applied as a heavy spray after the chemical has been mixed with water.

Mallinckrodt reports that its new preemergence herbicide for crabgrass control is labeled for use with fine turf. Pre-San is also effective in control of goosegrass, poa annua, watergrass, lambsquarters, redroot, pigweed, shepherd's purse, and deadnettle for an entire season.

Pre-San, a liquid formulation, can be applied with standard spray equipment, the company says.

For complete details on these new products, interested readers may write to Industrial Chemicals Div., Mallinckrodt Chemical Works, St. Louis 47, Mo.

WTT Mailbox

Editorial Wins Nod

May I compliment you on your September editorial "Poor Judgment." This is a theme that needs to be repeated regularly.

Dr. Joseph E. Howland

Editor of *Lawn Care*
Scotts
New Canaan, Conn.

Liked Shade Tree Article

I want to take this opportunity to tell you how much we appreciated your August issue of *Weeds Trees and Turf* in which you feature shade tree problems.

We were particularly interested in the article on noninfectious tree diseases by Dr. Richard Campana.

We are looking forward to Part II of this series.

A. R. Kurtz

Chief, Division of Plant Industry
State Dept. of Agriculture
Madison, Wis.

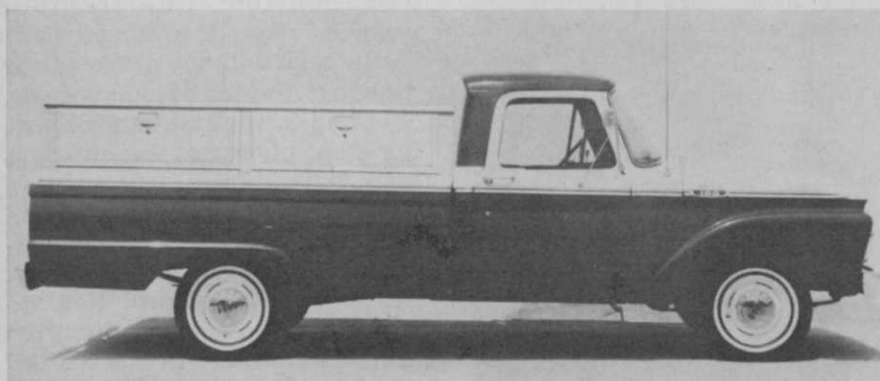
Part II will appear early in 1965.—Ed.

Reprints Appreciated

Your reprints from the October, November, and December, 1963, issues on the "Biology and Identification of Aquatic Weeds," their control and information on equipment, techniques, etc., are most appreciated. Three of the four copies were mailed to our district offices for their reference. I have retained one for my field notebook. It will prove, I'm sure, to be a valuable source of information, for in Southern California water availability is usually critical.

Joseph P. Dion

Deputy Agricultural Commissioner
Dept. of Agriculture
San Diego, Calif.



Mount 'em yourself tool boxes, in sizes to fit all 1/2- to 1 1/2-ton pickup or flat-bed trucks is the newest product from the Body Division, Morrison Steel Products, Inc., Buffalo, N. Y. Pre-drilled mounting brackets are provided. Rustproofed, the tool boxes are painted with a baked-on automotive paint to complement truck color. Key-locked, double-shelled doors have tamper-proof hinges to form level workshelf. Slam-catch handles are a standard feature. Free literature and prices are available by writing to Collins Associates, Inc., National Sales Representatives, 3318 Glenmore Ave., Cincinnati 11, Ohio.

Weeds Trees and Turf welcomes expressions of opinions from its readers. Send ideas and comments briefly as possible to Charles D. Webb, Editor, *Weeds Trees and Turf*, 1900 Euclid Ave., Cleveland, Ohio 44115.