

## Identify, Control Spider Mites

Spider mites, if left untreated, can quickly cover the sturdiest evergreen, according to William Hantsbarger, extension entomologist at Colorado State University, Fort Collins.

"Older or lower branches are usually attacked first," Hantsbarger reports, "but eventually the entire tree will be infested, needles will yellow, webbing will form around the base of needles, and branches turn brown and die."

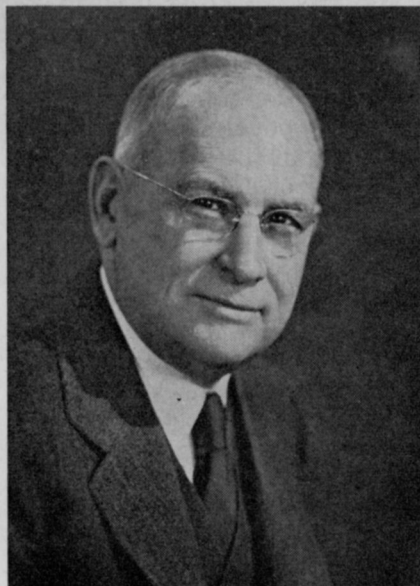
To check for spider mites, hold a sheet of white paper under a branch and rap the branch sharply. Any mites present will fall onto the paper, and can be easily identified as tiny red specks.

Miticides such as kelthane, dimite, and malathion have proven effective against spider mites, Hantsbarger reveals, and emphasizes that control is more effective when miticides are applied before spider mites build up in large numbers.

## Earthworms May Plague Lawns

Mounds of soil, pushed up by earthworms, can make a lawn rough, difficult to cut, and uneven to walk on, Roland Portman, extension entomologist at the University of Idaho, Moscow, warns CAs.

"Several insecticides, including dieldrin and chlordane, have proven effective in controlling earthworms in Idaho," Portman reports. "Lawns can be protected by a 3-foot band of insecticide between lawns and gardens, which will prevent earthworms from invading lawns."



Dr. Francis A. Bartlett was a well-known scientific authority on tree care.

## Dr. F. A. Bartlett, Pioneer Arborist, Is Dead at 81

Death has ended the long and noteworthy career of one of the world's foremost arborists.

Dr. Francis A. Bartlett, founder of the Bartlett Tree Experts, and chairman of its board since 1936, died at his home in Stamford, Conn. Nov. 21. He was 81.

The trail-blazing authority on trees was credited with the development of many modern methods and tools now standard in tree work, and was the first to successfully use chemotherapy in the treatment of vascular diseases.

A founder of the International Shade Tree Conference, Dr. Bartlett established the Bartlett School of Tree Surgery in 1923. He later inaugurated the Bartlett Tree Research Laboratories, a renowned research institute.

## — Advertisers —

INDEX TO ADVERTISEMENTS

Aero-Thatch, Inc. . . . .	Oct.
Amchem Products, Inc. . .	Oct.
Ansul Chemical Co. . . . .	4
John Bean Division, FMC	Dec.
Buffalo Turbine Agricultural Equipment Co. . . . .	18
California Chemical Co., Ortho Div. . . . .	2nd Cover
Chipman Chemical Co. . .	Nov.
Cyclone Seeder Co., Inc. .	Dec.
Diamond Alkali Co. 4th	Cover
Doggett-Fison Co. . . . .	Oct.
E. I. duPont de Nemours & Co., Inc. . . . .	3rd Cover
Geigy Agricultural Chemicals . . . . .	Oct.
Harder Arborist Supply . .	Oct.
Hardie Sprayers . . . . .	5
Hooker Chemical Corp. . .	Oct.
H. D. Hudson Manufacturing Co. . . . .	Dec.
Neil A. Maclean Co. . . . .	Oct.
Metalsalts Corp. . . . .	10
Morton Chemical Co. . . .	Oct.
The F. E. Myers & Bro. Co. . . . .	Nov.
Niagara Chemical Division, FMC . . . . .	7
Pennsalt Chemicals Corp.	Nov.
Pest Control Equipment Co. . . . .	Oct.
B. G. Pratt Co. . . . .	Oct.
Prentiss Drug & Chemical Co., Inc. . . . .	11
Residex Corp. . . . .	Oct.
Robeco Chemicals, Inc. . .	Oct.
D. B. Smith & Co. . . . .	Nov.
Southern Mill Creek Products Co., Inc. . . . .	3
Stauffer Chemical Co. . . .	Oct.
Tennessee Corp. . . . .	6
Thompson-Hayward Chemical Co. . . . .	Oct.
Union Carbide Corp. . . . .	Oct.
Vandermolen Export Co. . .	17
Velsicol Chemical Corp. . .	Oct.
Vineland Chemical Sales Corp. . . . .	Dec.
Virginia-Carolina Chemical Corp. . . . .	Nov.

## New TWIN TANK model POWER KNAPSACK MISTBLOWER DUSTER

*Spray, dust, wet-dust, and apply granules with  
the same machine; no extra attachments needed.*

NO DISMANTLING OR REBUILDING — Two separate back tanks and the exclusive KWH 'non-clog' nozzle permit single or simultaneous application of wet and dry chemicals. Cover up to **40 ft. swaths**. Simple fingertip controls give precise regulation of output and allow instant switching from liquid to dust or granules and vice-versa. Sturdy all-metal construction yet **only 27 lbs.**

—Choose from 1 and 4 HP DIRECT DRIVE models—

Contact your dealer or write to:

**VANDERMOLLEN EXPORT CO.**

378 Mountain Ave.  
North Caldwell, N. J.

