

## New Jersey Turfgrass Association's Expo 2004 ...even more in '04!

By Brad Park, Rutgers University  
[park@aesop.rutgers.edu](mailto:park@aesop.rutgers.edu)

The New Jersey Turfgrass Association is proud to present **New Jersey Turfgrass & Landscape Expo 2004** to be held December 7-9, 2004 at the Trump Taj Mahal Casino-Resort at Virginia Avenue and the Boardwalk in Atlantic City, NJ.

Among the highlights of this year's program, include Paul Caligiuri, Soccer Coach, Cal State Poly, Pomona, CA. Mr. Caligiuri is a former soccer player known for scoring the goal that put the United States National team into the World Cup after a many-year drought. His presentation: "**Team effort – The Coach, the player, the field**" will be part of the **Expo 2004** General Session on Wednesday, December 9 beginning at 9:00 am.

Additionally, the **Expo 2004** Sports Fields sessions will consist of educational topics ranging from the maintenance of synthetic infill turf systems to reducing potential litigation through improving field safety. Pesticide credits will also be available for those applicators in attendance.

For more information on registration, please call 856-853-5973.

### WEDNESDAY, DECEMBER 8 NJ DEP Credits: (1) 3B, 6B, 8C, PP2

#### Introductions:

Dean Marzocca, Treasurer, Board of Directors

**1:00 pm Construction procedures for synthetic turf fields**

Mike Ryan – President, LandTek

**1:30 pm A realistic viewpoint on maintenance of infill systems**

Jay Warnick – Brigham Young Univ. Grounds Dept.

**2:00 pm Factors to consider in athletic field construction**

Dr. James Murphy – Rutgers Univ./Cook College

**2:30 pm Searching for a qualified athletic field engineer**  
Eleanora Murfitt Hermann – CRS, President SFMANJ

### Inside This Issue

Welcome New & Renewed Members .....	3
Membership Form .....	3
SFMANJ Board of Directors .....	3
Field Tip .....	3
Calendar of Events .....	4
Rutgers Corner .....	4
Understanding pesticide toxicity .....	5
Prepare for the worse .....	6
Question & Answer .....	7
Fusarium Patch - Snow Mold .....	10
2003/2004 Membership Resource Directory .....	11
Proud Sponsor Directory .....	14

*This newsletter is the official bi-monthly publication of the Sports Field Managers Association of New Jersey. For information regarding this newsletter, contact: SFMANJ at 908-730-7770*

#### Co-editors:

Jim Hermann, CSFM and  
Eleanora Murfitt-Hermann, CRS

*SFMANJ does not necessarily support the opinions of those reflected in the following articles.*

**3:00 pm Problems experienced in the construction of athletic fields**

Jeff Cramer – DPW Superintendent, Twp. of Plainsboro, NJ

**3:30 pm Improving drainage on existing athletic fields**

Mike Ryan – President, LandTek

### THURSDAY, DECEMBER 9

8:00 – 10:00 am

NJ DEP Credits: (1) 3B, 6B, 8C, PP2

**8:00 am Surface restoration of running tracks**

Don Russo – PE, Recreational Facility Consult. Engineer; Planning, Design and Construction Co.

**8:30 am Perspectives on field conditions as a player & as a coach**

Paul Caligiuri – Soccer Coach, Cal Poly, Pomona, CA

*Continued on page 4*

## SFMANJ Business

Next Board of Directors Meeting –  
Nov. 30th, at Storr Tractor at 4:30PM



**THE CHOICE OF THE PROFESSIONALS**

**Athletic Field Construction  
& Drainage Specialists**

**Site Evaluations**

**Design/Build**

**Laser Grading**

**Renovations**

**Specializing in Sand/Slit Drainage Systems**

235 County Line Road  
Amityville, NY 11701  
631-691-2381  
Fax: 631-691-2392

# Welcome New & Renewed SFMANJ Members

Currently we have 325 members. If you have not seen your name in this newsletter please call (908)730-7770 or email us at [hq@sfmanj.org](mailto:hq@sfmanj.org). ♦

Beachy, Scott	Millstone Township
Bini, Steven	Steven Bini Landscaping Inc.
Cordero, Craig	Union Township
Downing, Kevin	St. Joseph's Church
Miller, Marty	Kearny DPW, Shade Tree Div.
Myers, Dennis	Ranney School
Rickard, Michelle	New Jersey Turfgrass Assoc.
Sibicky, Timothy	Rutgers University Student
Singer, Karl	Bayone, City of
Taylor, Joel	Haddon Twp. Board of Ed
Wright, Linda	Profile Products

## SFMANJ Annual Membership Registration Form

\* receive update information by email

Name \_\_\_\_\_

Title \_\_\_\_\_

Employer \_\_\_\_\_

Address \_\_\_\_\_

City \_\_\_\_\_

State \_\_\_\_\_ Zip \_\_\_\_\_

County \_\_\_\_\_

Phone \_\_\_\_\_ Fax \_\_\_\_\_

\*E-mail \_\_\_\_\_

Signature \_\_\_\_\_

**Individual** ..... \$45

**Associate** ..... \$45

**Organization/Institution** ..... \$45

**Additional member from facility** ..... \$25

**Commercial/Contractor/Vendor/Supplier** ..... \$85

**Additional member from company** ..... \$30

**Student** ..... \$15

**Send with Check or voucher to:**

**SFMANJ**

**P.O. Box 370**

**Annandale, NJ 08801**

# 2004

## SFMANJ Board of Directors

**President** ..... Eleanora Murfitt-Hermann, CRS  
Washington Twp Parks & Recreation

**Vice President** ..... Jim Hermann CSFM  
Total Control Inc

**Secretary** ..... Fred Castenschiold  
Storr Tractor Company

**Treasurer** ..... Dean Marzocca  
Dean's Lawn & Landscape Co.

## Directors

**Dr. James Murphy** - Rutgers University

**Jeff Cramer** - Plainsboro Township DPW

**Clare Liptak** - Rutgers University

**Brad Park** - Rutgers University

**George McCarthy** - Spring Irrigation Co., Inc.

**Robin VanDerlyn**, Chatham School District

**Don Savard**, Salesianum School

**Advisor**.....Dr. Henry Indyk  
TurfCon GSI Consultants, Inc.

## Mission Statement

Committed to enhancing the professionalism of athletic field managers in New Jersey by improving the safety, playability and appearance of athletic fields at all levels through seminars, field days, publications and *networking* with those in the sports turf industry.

## Contact us at:

P.O. Box 370

Annandale, NJ 08801

Web Site - [www.sfmanj.org](http://www.sfmanj.org)

E-mail - [hq@sfmanj.org](mailto:hq@sfmanj.org)

Ph/Fax - 908-730-7770

National Organization  
Sports Turf Managers Association

[www.sportsturfmanager.com](http://www.sportsturfmanager.com)

e-mail: [SportsTMgr@aol.com](mailto:SportsTMgr@aol.com)

Phone: 1-800-323-3875

## Field Tip

Repair the damaged turf areas of your athletic fields with sod in November and have them ready to go in the spring. Sod installed in November on heavy textured soil typically needs no supplemental irrigation. In lieu of a current soil test apply 10-20-20 fertilizer at the rate of 5 pounds per thousand square feet to the soil before placing the sod. ♦

---

## Calendar of Events

---

December 7-9<sup>th</sup> 2004 **New Jersey Turfgrass Expo:** Athletic field education sessions 8<sup>th</sup> and 9<sup>th</sup>, see front page. Taj Mahal, Atlantic City. For more info call 856-853-5973 or 732-821-7134

**Rutgers University Winter Courses:** 10% off to all SFMANJ members mention this newsletter  
February 22-24, **3-Day Athletic Field Construction & Maintenance Course**  
March 1, 8, 15, 22, **Athletic Field Special Topics: Soils, Turf, Athletic Field Construction and Synthetic Turf Products.** To register call 732-932-9271 ext. 630

---

## Rutgers Corner - October 2004 Sports Turf Workshop Recap

---

By Brad Park, Rutgers University  
[park@aesop.rutgers.edu](mailto:park@aesop.rutgers.edu)

---

A Sports Turf Workshop was held on October 7, 2004 at Rutgers University Hort. Farm II, in cooperation with Sports Field Managers Association of New Jersey (SFMANJ), in which sports field managers from locations ranging from Cape May County, to Delaware, to New York City participated in a day filled with educational topics.

The rewards of attending the workshop began at the registration table. All registered attendees received a turfgrass cap compliments of the Rutgers Center for Turfgrass Science and a packet of handouts that included soon-to-be Rutgers Fact Sheets outlining Kentucky bluegrass, tall fescue, and perennial ryegrass varieties ideal for sports fields in New Jersey based on Rutgers turfgrass traffic tolerance research.

Following lunch and introductions, the schedule of events moved outside. Given the weather for the day, October 7 may have been the day in 2004. Bright sunny skies, 70-degree temperatures, and low humidity provided optimal conditions for a field plot tour.

Dr. Stacy Bonos and Dr. Bill Meyer began the day discussing Kentucky bluegrass and tall fescue and their use on sports fields. Both the Kentucky bluegrass and tall fescue trials were National Turfgrass Evaluation Program (NTEP) tests. Dr. Meyer then described a newly-seeded perennial ryegrass NTEP trial in which numerous varieties had fallen victim to gray leaf spot, a turfgrass disease that affects perennial ryegrass. This talk was extremely pertinent as sports field managers routinely overseed high-traffic fields with perennial ryegrass. Several commercially available varieties showed superior gray leaf spot resistance including Paragon GLR, Palmer IV, Repell GLS, and Protege.

The plot tour moved to the opposite end of Hort. Farm II where Dr. Steve Hart discussed pre and postemergence crabgrass control. Treatment differences were readily apparent in the plots as some materials effectively controlled crabgrass while others did not.

The focus of the field day shifted to Kentucky bluegrass as Dr. Jim Murphy stressed the importance of fertilization and irrigation inputs necessary to establish Kentucky bluegrass on a sand rootzone. Brad Park followed with a discussion of current Rutgers research investigating the effects of wear, compaction, and season-specific wear on various Kentucky bluegrass varieties. One take-home message from this study is the strong ability of Kentucky bluegrass to recover from damage, particularly if use of a field is withheld to allow recuperation.

Rich Buckley, coordinator of the Rutgers Plant Diagnostic Lab, ended the educational sessions with a presentation on gray leaf spot and other diseases that affect New Jersey Sports Fields. This presentation was timely given the level of gray leaf spot infection on perennial ryegrass seen previously in the day.

For those registered attendees wishing to receive NJ DEP pesticide credits, three Category 3B credits were given. The day ended with a popular SFMANJ tradition – the awarding of door prizes. Door prizes included Rutgers Center for Turfgrass Science golf shirts, a 1-yr membership to SFMANJ, a registration to New Jersey Turfgrass Association's Expo 2004 in Atlantic City, a soil probe (complimentary of Dr. Henry Indyk), and several soil tests kits from the Rutgers Soil Test Lab.

A special thanks goes out to numerous people who helped prepare the test plots, the day's speakers, SFMANJ for co-sponsoring the day, and especially all those who attended. –  
*Brad ♦*

---

*Continued from page 1*

**9:00 am Work smarter, not harder**

Floyd Perry – President, Grounds Maintenance Services, FL

**9:30 am Weed problems and their control**

Brad Park, Rutgers Univ./Cook College

**10:00 – 12:30 pm**

**TRADE SHOW – Estes Arena, Free Snacks and Beverages**

**NJ DEP Credits: (1) Core**

**12:30 pm Annual Business meeting of SFMANJ, Elections**

Eleanora Murfitt Hermann – CRS, President SFMANJ

**1:00 pm Reducing potential litigation – improving safety**

Floyd Perry - President, Grounds Maintenance Services, FL

**1:30 pm Irrigation techniques for water conservation**  
George McCarthy – Spring Irrigation, Cranbury, NJ

**2:00 pm Grooming: Improving playability of infields**

James Hermann – CSFM, Vice Pres. SFMANJ, Total Control, Inc.

**2:30 pm Update on school IPM program**

Dr. George Hamilton, Rutgers Univ. ♦

## Understanding pesticide toxicity

The following was taken from an article in *Hunterdon Observer*, written by Jeff Rugg entitled **Nontoxic use of pesticides requires know-how**

All substances, including water are poisonous at some level of dosage. Toxicity refers to a substance's ability to produce injury or death. Toxicity can be acute or chronic. Acute toxicity is poisoning resulting from a single exposure to a large dose of a chemical. Chronic toxicity is poisoning from repeated low doses over a prolonged period of time. Most chemicals have the ability to produce acute and chronic toxicity.

The human body has the ability to filter out, or metabolize, many chemicals before they can build up to a poisonous level through repeated exposure. There is a lethal dose of caffeine in 200 cups

of coffee, a lethal dose of ethanol in a fifth of bourbon and a lethal dose from aspirin in 200 pills. We are not killed by low level doses because the body can destroy the chemicals before they reach the toxic level.

Toxicity alone does not measure the danger of a chemical. Exposure and toxicity together form a chemicals ability to be a hazard. A highly toxic chemical may present little hazard when formulated in a very diluted concentration, or it is formulated to not be inhaled or absorbed through the skin, or it is applied under conditions that prevent contact. The opposite is also true. A normally non-toxic chemical can be hazardous if it is used in a form that concentrates it, or it is used in a way that allows contact with the skin, or inhalation. Repeated doses of chemicals that break down slowly in the body or that are stored in the body may cause a hazard.

Chemicals should be avoided whenever possible, used as safely as possible and disposed of properly. To do this, consider which chemical is least

toxic and least persistent while still being effective. It is more important to know the safety level of a chemical than whether it is of a natural, organic or synthetic origin. The natural insecticide pyrethrum is a little less toxic than the synthetic insecticide Sevin and they are both much less toxic than the natural insecticide rotenone. Sometimes synthetic versions of natural compounds are necessary to make them strong enough to work. Sometimes refining removes some toxicity. Crude citrus oils kill fleas, but they also kill cats. Two refined citrus oil compounds, linalool and D-limonene still kill fleas but have a low toxicity to cats.

Toxic chemicals are not necessarily dangerous in their use, but rather in their misuse. A wide range of items fit this category, from antifreeze to vitamins and from mothballs to air deodorizers.

The preceding article stands to reaffirm the need for education and understanding when using pesticides. Always read the entire label. Know your product. Know your site. Know your target. ♦

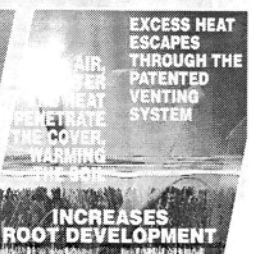
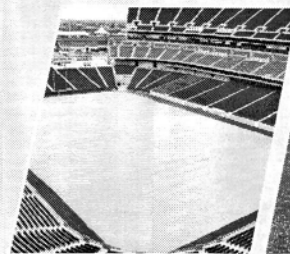
## EVERGREEN™ Turf Blankets... ...trusted around the world!

### "Results Outstanding... Could Not Believe..."

wrote **Dann Daly**, Park Maintenance Supervisor,  
**Parks & Recr. Dept.**, North Smithfield, RI

- Earlier spring green-up
- Faster seed germination
- Deeper root development
- Delays dormancy in fall
- Ideal winter blanket
- 3 & 7 yr. warranty covers
- Best for quick turf repairs
- Available in any size

Want to know more?  
**CALL TOLL FREE**  
**1-800-387-5808**



Covers for football and soccer fields are also readily available.

Covered... Uncovered...

It works on the greenhouse principle, every time!

**COVERMASTER**  
MASTERS IN THE ART OF SPORTS SURFACE COVERS

**covermaster.com**

E-MAIL: [info@covermaster.com](mailto:info@covermaster.com)

COVERMASTER INC., 100 WESTMORE DR. 11-D, REXDALE, ON, M9V 5C3 TEL 416-745-1811 FAX 416-742-6837



## Prepare for the worst

Steve and Suz Trusty, partners in Trusty & Associates based in Council bluffs, IA

Fields that enter winter in top shape have the best chance of emerging from winter stress in playable condition. Survival strategies include a well-managed, year-round maintenance program, and as much fall preparation as field use schedules, weather, time, and funding allow.

Ideally, baseball and softball fields should be completely ready for play when they are put to bed for the winter. Repair lip areas and basepaths; prep batter's boxes and pitching mound areas; and where turf covers are available, blanket skinned areas prior to heavy snow cover. When basepath covers aren't in the budget, it may help to erect an upright screen of landscape-type fabric to reduce wind and storm damage.

Whenever possible, aerate turf to reduce compaction and improve water infiltration and percolation. Timing of core aeration is critical. This is especially true for uncovered fields with high exposure to winter winds because of the desiccation factor. Take into consideration existing field conditions, soil profile, turfgrass varieties and cultivars, traditional winter and early-spring weather conditions, and reliability of long-range weather forecasts.

Remove excess thatch prior to the onset of winter to avoid disease infestation. But be careful, too little thatch can expose turfgrass crowns to desiccation, especially in areas with multiple freeze-thaw cycles. On fields subjected to winter play or other traffic, some thatch is needed to cushion turfgrass crowns from wear.

Lower mowing heights late in the season to reduce surface injury from traffic, and to reduce disease susceptibility. But again, be careful. Dropping the height of cut too early may reduce leaf surface enough to drop carbohydrate production to an unacceptable level. The height of cut and timing of height reduction depends on the turfgrasses involved, soil profile, field use, and off-season traffic. For late-season overseeding of cool-season turf, time your program based on whether you want germination during the current

season or early the following spring. Some sports turf managers make one late-season overseeding with a mix of turfgrasses to cover both needs. High-use, multi-sport, low- to medium-maintenance fields can be overseeded with turf-type tall fescues, perennial ryegrasses, and bluegrasses. The fescues and ryegrasses will germinate late, while bluegrass germination will follow in the spring.

Evaluate late-season turf fertility before setting a fertilization strategy. Provide adequate phosphorus for strong root development and support of new seedlings. Adequate potash will help overall turf vigor and provide resistance to stress.

Late-season nitrogen (N) applications depend on existing levels, turf development, types of turfgrasses, type of N, and weather conditions. Cool-season turf needs a period of lower N levels to harden off, but levels must be sufficient to support fall growth and to start spring green-up.

Apply preventive fungicide for snow molds on high-profile, high-maintenance fields where air movement is restricted by a stadium enclosure, snow cover, or tarping. Moisture and temperature conditions leading into winter dictate the number and timing of applications.

Tarps protect turfgrasses from snow and ice buildup, excess moisture, extreme cold, and desiccation. They retain warmth, keeping turf growing

longer into the fall and giving it an earlier start in the spring.

Sustained periods of above-normal temperatures can combine with lack of air movement to produce excess heat beneath a tarp. This promotes inappropriate turf growth and anaerobic decomposition in the thatch layer, and it creates favorable conditions for disease.

Temporarily increase air circulation across the turf to prevent these problems. You can lift a portion of the tarp to introduce air flow beneath it, or temporarily remove the tarp if conditions are severe enough to warrant it.

Drying winds moving across open fields may combine with lack of precipitation to produce damaging conditions. If temperatures are high enough to allow acceptable water penetration, irrigate to counteract the lack of moisture.

Check turf and soil conditions frequently as temperatures warm. If conditions are favorable for disease, consider alternatives to change one or more of the contributing factors. Increase air movement, reduce temperatures, or reduce moisture. If these conditions can't be changed and signs of disease are present, a preventive spray may be cost effective.

Consider overseeding these areas in spring to counteract turf loss. Match spring tarp removal to appropriate weather conditions: cool, cloudy, and still. Too much sun, heat, or wind can desiccate newly uncovered turf, especially when soil temperatures are too cool to allow roots to replace surface moisture loss. Be prepared to syringe the field lightly, but frequently, to avoid desiccation.

A competent, vigilant sports turf manager is the greatest factor in winter field survival. ♦



Count on it.

*Toro Irrigation  
Athletic Field Specialists*

*For sales and design assistance, contact:*

**Storr Tractor Co.**  
**Mike Pastori**  
**908-722-9830**

**Phila. Turf Co.**  
**Rich Toleno**  
**267-266-0389**

## Question and Answer

**Question:** How do I calculate the number of clay bricks I need to modify my pitchers mound and home plate area.

**Answer:** The Pitchers mound on an official baseball or Babe Ruth field with 90' baselines has a plateau or flat spot on top measuring approx. 3' x 5' or 15 Square feet. The landing zone is approx. 4' x 6' or 24 square feet. You may want to place the bricks narrower at the top of landing zone close to the pitching rubber and wider at the bottom but the square footage should remain about the same. This gives you 39 square feet. Deduct 1 square foot (6" x 24") for the pitching rubber and you end up with 38 square feet. Each clay brick is 4" x 8" or 32 square inches. To convert the square footage you have to square inches multiply 38 x 144 for a total of 5472 square inches. Divide 5472 by 32 (the number of square inches in a brick) and you will find you need approx. 171 bricks for the pitchers mound. This number can be adjusted to conform to the individual wear pattern of your pitchers mound.

The home plate area has two batters boxes, measuring 4' x 6' each




**Moyer & Son, Plant Nutrients**  
**Offers professional sport turf care products.**  
M.O.S.T. organic fertilizers  
Moyer Green Gro granular sport turf fertilizers  
Fertigation & Turflo® Liquid Fertilizers  
Exclusive grass seed & erosion control products  
Soil amendments  
Clay drying materials

**For Further Information Call 888-408-5433**


**Quality. Durability. Reliability.**

**The only turf tough enough for Superbowl XXXVII and Superbowl XXXVIII**

Pennington Seed, Inc. is extremely proud to be selected for a second consecutive season to provide the all important field for the Super Bowl



CONTACT  
MARK HARDEK  
215-990-9081 (Cell)



**PENNINGTON**

**WORLD'S LARGEST MARKETER AND PRODUCER OF SEED**

Specializing in Turf Seed, Reclamation Grasses, Forage and Wildlife Products.

and a catchers box measuring 3' 7" x 5'. These total 9492 square inches for a total of 297 bricks in the home plate area. ♦

## Nominations for SFMANJ Board of Directors for 2005 Come vote at 2004 Expo

Here is your chance to have a voice in 2005 leadership of the SFMANJ. We are now accepting nominations for Board of Directors. You are welcomed to nominate yourself.

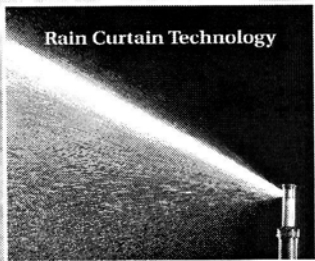
There are 12 people representing Parks & Recreation, Schools, Colleges, Professional DPW, Facilities, Education/Extension, Commercial/Contractors and Buildings & Grounds who serve on the chapters' Board of Directors. Each Director serves a two-year term beginning January 1, 2005. There are four openings. A nomination committee will select members based on the following criteria:

1. Have been interested and active in SFMANJ (a member in good standing)
2. Are proven leaders
3. Are representative of the entire organization, both professionally and geographically
4. Are willing to commit time to the development of our organization
5. Understand when accepting this nomination you are expected to attend one meeting a month (evenings, minimum of 8 meetings), be a Chairperson of one committee, report on that committee at the monthly meeting and help with field days.

If you or someone you know are interested in serving on the Board of Directors fax or send your name, address and phone number where you may be reached. E-mail or fax by November 30, 2004 to: SFMANJ, PO Box 370, Annandale, NJ 08801 or fax to 908-730-7770 ♦



**Install Confidence.™**



**Install Rain Curtain  
Nozzle Technology.**

Only Rain Bird rotors feature Rain Curtain™ Nozzle Technology that delivers uniform water distribution across the entire radius range for green grass results. Gentle, effective close-in watering around the rotor eliminates dry spots without seed washout, and larger water droplets assure consistent coverage, even in the windiest conditions.

**Install Confidence. Install Rain Bird.**

**RAIN BIRD®**

**D  
V  
H**



**Athletic Turf**

"Building Turf is our Game"

Phone: 800-942-0134

856-429-9796

Fax: 856-427-9684

Email: [mripa@thedvhgroup.com](mailto:mripa@thedvhgroup.com)

626 Park Road

Cherry Hill, New Jersey

08034

[www.thedvhgroup.com](http://www.thedvhgroup.com)

Division Manager, Joe Warner:

Joe Warner came to DVH in 2000 after 20 years of running his own business, bringing with him a level of expertise which has enabled our company to provide affordable solutions to athletic fields.

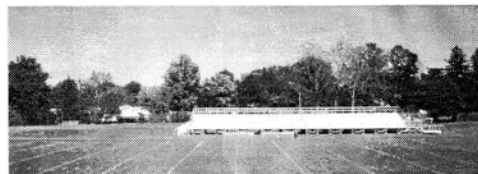
Email:

[jwarner@thedvhgroup.com](mailto:jwarner@thedvhgroup.com)

#### Renovation & Construction Services:

*Design/layout, top-soiling, soil amendments, Laser-guided grading...in-field mix, sod/ seed, pitcher's mound & batter's box construction.*

*Supplies: In-field conditioners, drying agents, mound/batter's clay, bricks & marking lime.*



#### Turf Management Services:

*Complete fertilization programs, top-dressing, deep-tine core aeration, slice-seeding, grub & disease control.*

Division Manager, Greg Winfree:

Greg's hands-on approach to Athletic Turf Management solutions is providing our customers with a level of comfort knowing their athletes will get the best turf possible.

Email: [gwinfree@thedvhgroup.com](mailto:gwinfree@thedvhgroup.com)



## "JUST ADD WATER..."

Like part of any good recipe, the proper amount of water at the right time will enhance and protect your turf.

Don't let an automatic underground sprinkler system be your facility's missing ingredient.



DESIGN

INSTALLATION

MAINTENANCE

SPRING IRRIGATION CO., INC

P.O. BOX 523

DAYTON, NJ 08810

NJ IRRIGATION LICENSE # 15040

IA CERTIFIED DESIGNER # 180186

(732) 821-5767

FAX (732) 821-0130

springirr@netzero.com

## NATIONAL SEED PROFESSIONAL TURF PRODUCTS

Specializing in Quality  
Grass Seed To Meet All Your  
Turf Performance Standards

Call For a Catalog

**800-828-5856**

Carrying a full line of quality mixtures  
especially formulated for:

**SPORTS & ATHLETIC FIELDS**

LOW MAINTENANCE AREAS

GENERAL GROUNDS

GOLF, LAWN, RECLAMATION

**Technical Agronomic Support and  
Custom Blending Available**

## Please Note!

For your  
convenience  
we have  
included in this  
newsletter a  
2003/2004  
Membership  
Additions/  
Update  
Directory.

The list includes  
Member Agencies,  
Commercial Members,  
and Student Members

Please cut out  
page 11 and  
insert it  
into your  
SFMANJ  
Directory  
Binder

# Fusarium Patch - Snow Mold

Dr. Tim Rhodus, OSU Dept. of Horticulture and Crop Science  
International Sports Turf News 2004-03-19

Fusarium patch (*Microdochium nivale*) is a serious disease of cool season golf and sports turf grasses (bentgrass, perennial ryegrass, annual bluegrass etc.)

\* Try to maintain as dry a surface as possible. For example remove dew every morning.

\* Try to minimize the amount of thatch present.

\* Maximize air movement over the turf canopy.

## CHEMICAL CONTROLS

When dealing with the control of a disease like Fusarium patch it is always best to spray preventively as once the disease is visible the damage is done. The following are some of the systemic herbicides that are available for the control of Fusarium: cyproconazole, fenarimol, iprodione, mancozeb, propiconazole, thiophanate-methyl, triadimefon, and vinclozolin.

Fusarium patch is found mostly in regions with cool humid weather

conditions due to the way the disease spreads and survives. The pathogen usually infests the thatch layer where the spores can be easily spread and survive. The mycelium is pink to rose in color; it normally attacks the shoots of the plant. It will survive in both live and dead plant tissue; the optimum pathogenicity temperature range is 32-44 degrees F (0-6 degrees C)

Research shows that the pathogen does not infect the crown or root of the plant, but only causes leaf blade damage. Therefore, if conditions are favorable for growth the grass will recover.

In North America, Fusarium patch is often referred to as "pink snow mold". The pathogen, *Microdochium nivale*, is the causal agent of both Fusarium patch and pink snow mold. The term pink snow mold however is used when the disease occurs under snow or tarp or leaf cover, while the term Fusarium patch is used when snow cover etc. is absent.

## IDENTIFYING FEATURES

Fusarium patch usually first appears as 1-2 inch (25-50mm) diameter water soaked circular patches. They can enlarge up to as much 12 inches (300mm) in diameter. The patches will start off with a yellow to orange-brown color. As the diseased patch gets bigger the center of the patch turns brown or tan in color. The patches can combine to form large circular or irregular shapes. When conditions are moist and the mycelium is active, there will sometimes be a ring of pink to white mycelium around the outside of the patch.

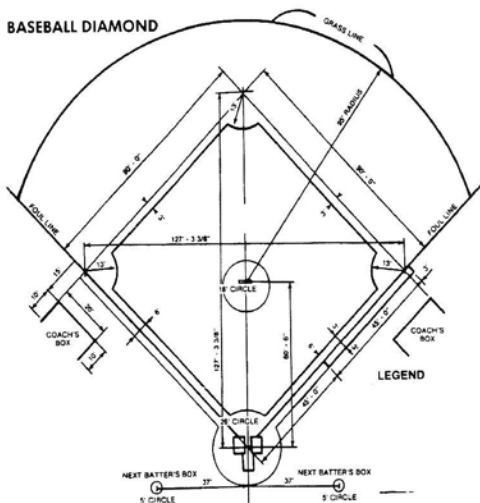
## CULTURAL CONTROLS

\* Avoid excessive nitrogen fertilization as this stimulates lush succulent shoot growth, especially during humid wet periods.

\* Maintain a soil pH of less than 6.5.

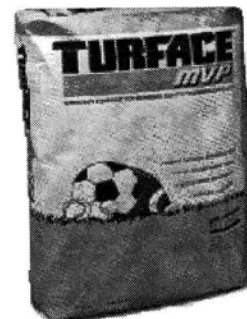
**Authors:** Dr. Karl Danneberger & Robert Kerr. Robert is a Scottish native, currently working as Dr. Danneberger's student research assistant. He previously worked at Gleneagles in Scotland and most recently at Shinnecock Hills in NY. He is studying for his BSc. (Hons) in Turfgrass Science at Myerscough College in England. ♦

BASEBALL DIAMOND



## Terre Has a full line of Sports Turf Products

- Infield Clay Mixes
- Turface soil conditioners
- Grass Seed
- Fertilizers
- Pesticides
- Top Dressing
- Goose Control
- Turf Blankets
- Marking Paints



Keep Your Ball field's safe and looking great!! TERRE has the products from grass seed and fertilizer to infield clays and Sports Field Conditioners like Turface products

Call For a Catalog or Inquiries

Tel: 973-473-3393

Fax: 973-473-4402

206 Delawanna Ave Clifton NJ 07014

The TERRE Co.

# 2003/2004 Membership Resource Directory - Additions/Updates

## Member Agencies

### \*Battery Park City Parks Conservancy

Robert Hansen  
Ballfield Turf Manager  
2 South End Avenue  
New York, NY 10280  
Phone: (516) 435-7806  
Fax: (212) 267-9707

### Bayone, City of

Karl Singer  
Public Works Coordinator  
630 Avenue C  
Bayonne, NJ 07002  
Phone: (201) 697-2778

### Bordentown, City of

Robert Erickson  
Public Works Mgr.  
324 Farnsworth Ave.  
Bordentown, NJ 08505  
\*Phone: (609) 298-2932  
\*Fax: (609) 298-0654

### Greenwich Township DPW

\*Joseph Mecsey III  
Asst. Forman  
602 S. Main St.  
Stewartsville, NJ 08886  
Phone: (908) 339-1715  
Fax: (908) 454-5300  
Haddon Twp. Board of Education  
Joel Taylor  
Head Groundskeeper  
500 Rhoads Avenue  
Westmont, NJ 08108  
Phone: (856) 869-7750  
Fax: (856) 869-7778

### Harding Township School District

Joseph Pitcher  
Maintenance/Custodial Supv.  
PO Box 248  
New Vernon, NJ 07976  
\*Phone: (973) 267-6398  
\*Fax: (973) 292-6398, ext.129

### Millstone Township

Scott Beachy  
Crew Chief  
PO Box 240  
Perrineville, NJ 08535  
Phone: (732) 446-6774  
Fax: (732) 786-0225

### Newark Public Schools

Leon Purdie

Athletic Field Supervisor  
87 Lenox Street  
Newark, NJ 07106  
Phone: (973) 733-7535

### Piscataway Twp Board of Ed

Carl Olivi  
13 Ethel Rd.  
Piscataway, NJ 08854  
Phone: (732) 985-5409  
Fax: (732) 572-6965  
St. Joseph's Church  
Kevin Downing  
Ground Keeper  
PO Box 387  
Toms River, NJ 08754  
Phone: (732) 244-2647

### St. Joseph's Church

Wade Elms  
Grounds Supervisor  
PO Box 387  
Toms River, NJ 08754  
Phone: (732) 244-2647

### St. Joseph's Church

Mariusz Majchrowski  
Grounds Crewman  
PO Box 387  
Toms River, NJ 08754  
Phone: (732) 581-4714

### Union Township

\*Craig Cordero  
1 Swanstrom Place  
Union, NJ 07083  
Phone: (908) 686-1922  
Fax: (908) 687-7624

### West Windsor DPW

John Oliver  
271 Clarksville Road  
West Windsor, NJ 08550  
Phone: (609) 799-8370  
Fax: (609) 799-4028

## Commercial Members

### Central Irrigation Supply

\*Jerry Catoggio  
429 Bell Street  
Piscataway, NJ 08854  
Phone: (732) 752-7400  
Fax: (732) 752-2021

### Fisher & Son Co., Inc.

Randy Rider  
217 Cheyenne Drive  
Bear, DE 19701

Phone: (302) 242-6848  
Fax: (302) 736-3081  
Email: RRider@fisherandson.com

### Glenmac

Shawn Kimmerly  
PO Box 2135  
Jamestown, ND 58402  
Phone: (609) 226-2178  
Email: Shawn@glenmac.com

### John Deere

James Cunningham  
2000 John Deere Run  
Cary, NC 17579  
Phone: (717) 687-8049  
Fax: (717) 687-8049  
Email: cunninghamjamesj@johndeere.com  
John Deere Landscapes  
Robert Fredericks  
3 DeForest Lane  
Bridgewater, NJ 08807  
Phone: (908) 834-1279  
Fax: (908) 928-0252  
Email:  
rfredericks@johndeerelandscapes.com

### Martin Stone Quarries, Inc.

Bruce Hoffman  
PO Box 297  
Bechtelsville, PA 19505  
Phone: (610) 367-2011  
Fax: (610) 367-8613  
Email: bruce@martinstone.com

### Profile Products

Linda Wright  
750 Lake Cook Road  
Buffalo Grove, IL 60089  
Phone: (847) 215-3427  
Email: lindaw@profileproducts.com

### Turf Specialties, Inc.

Art Lewis  
3528 Waterfield Parkway  
Lakeland, FL 33803  
Phone: (800) 201-1031  
Fax: (863) 669-1831  
Email: art@turfspecialties.net

## Student Members

### Rutgers University

Matthew Cognetta  
2 River Road, Apt 11  
Highland Park, NJ 08904  
Phone: (845) 590-0470  
Fax: (732) 514-1382

\* Denotes Change

**YOUR "ONE-STOP SOURCE"  
FOR AMERICA'S LEADING  
BASEBALL SURFACES & SUPPLIES**



THE PROFESSIONAL'S CHOICE  
... SINCE 1922

USED BY OVER 100 PRO TEAMS,  
OVER 700 COLLEGES, PLUS THOUSANDS  
OF TOWNS & SCHOOLS WORLDWIDE.  
SPECIAL MIXES FOR INFIELDS,  
PITCHER'S MOUNDS & HOME PLATE AREAS.

**REGIONAL INFIELD MIXES  
AND RED WARNING TRACKS  
FOR EVERY STATE & CLIMATE!**

PLUS INFIELD CONDITIONERS  
TO IMPROVE EXISTING INFIELDS:

**IF TOO HARD AND POORLY DRAINING!**

**Pro's Choice**

THE REDDER, LESS DUSTY, MORE UNIFORM  
INFIELD CONDITIONER & DRYING AGENT  
"RED" OR "GREY" FOR INFIELDS  
"GREEN" FOR TURF  
FOR CONSISTENT INFIELD CUSHION  
IN WET OR DRY WEATHER!

**IF TOO SOFT & DUSTY!**

**STABILIZER**

FOR FIRM, YET RESILIENT, PLAYING SURFACES

**TO QUICKLY DRY INFIELDS!**

The Original & Most Absorbent is Now

**NEW & IMPROVED GRANULAR**

**DIAMOND-DRY.**



**OVER 200 OTHER INFIELD PRODUCTS!**

Now in 6 Colors!

**FENCEGUARD**  
Protective Safety Covers  
for Chain Link Fence

WALL PADDING • WINDSCREEN • RAIL PADDING  
TAMPERS • DRAG MATS • RAKES  
HOLLYWOOD® BASES • FIELD MARKING MACHINES  
BATTING PRACTICE COVERS • RAIN COVERS  
PERMA-MOUND™ PADS • MOUND BRICKS  
SAFE "T" MATT™ BATTER'S BOX PADS  
TYPAR® & TERRA-BOND® GEOTEXTILES  
ON-DECK CIRCLES WITH TEAM LOGOS  
PERMANENT FOUL LINES & MUCH MORE!

**FREE INSTRUCTIONAL BROCHURES  
DISTRIBUTION CENTERS NATIONWIDE!**

**800-247-BEAM**

908-637-4191 / FAX 908-637-8421

PARTAC PEAT CORPORATION

KELSEY PARK, GREAT MEADOWS, NJ 07838

*"The best infield mix I've ever used."  
— GEORGE TOMA*

**fisher & son  
company, inc.**

The "Green Industry" Supplier  
SUPERIOR PRODUCTS FOR THE  
TURF & HORTICULTURAL PROFESSIONAL

RANDY RIDER

302-242-6848

[rrider@fisherandson.com](mailto:rrider@fisherandson.com)



TriCure

**EarthWorks**  
Natural Organic Products



**TUCKAHOE  
TURF FARMS, INC.**  
"Instant Lawns" [www.ttfarms.com](http://www.ttfarms.com)

401 Myrtle Ave.  
PO Box 148  
Hammonton, NJ  
08037

- **HIGH QUALITY** New Jersey Certified Bluegrass & Fescue Sod
- **GROWN ON HAMMONTON** sandy, loam-type soil (89-92% sand)
- **700-acre farm** allows deliveries to the Northeastern states or wherever sand sod is needed for specialized modern athletic fields
- **LABOR-SAVING BIG ROLLS**, please call for custom installation prices
- **THICK CUT SOD** with as much as 1 3/4" soil for repair job

609-561-7184 **800-222-0591** Fax 609-561-0296

Established 1925

**Fertl Soil**

Specializing in Topdressing and Construction Soils  
For Golf Courses and Athletic Fields

548 Rosedale Road

Kennett Square, PA 19348

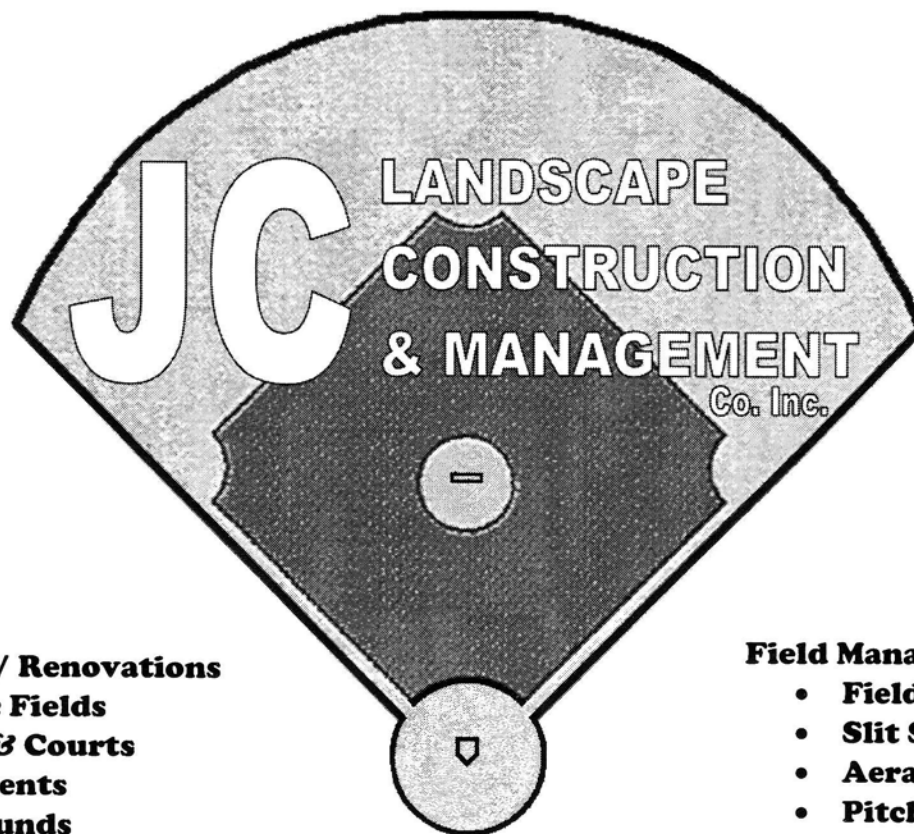
**610-444-0496**

**JC Landscape Construction is a full service Athletic Facility Contractor.**

**Our staff is experienced in all phases of construction and renovations.**

**We are currently registered with the state of NJ and the NJSCC for Board of Education projects and are fully insured and bonded.**

## **ATHLETIC FIELD CONSTRUCTION SPECIALISTS**



### **Construction / Renovations**

- **Athletic Fields**
- **Tracks & Courts**
- **Field Events**
- **Playgrounds**
- **Site Amenities**
- **Drainage**
- **Underground Utilities**
- **Laser Grading**

### **Field Management**

- **Field Repairs**
- **Slit Seeding**
- **Aeration**
- **Pitcher's Mound Reconstruction**

### **Additional Services**

- **Field Survey**
- **CAD Design**

**Contact us today for an evaluation of your facility**

**Tel: 973-492-4076**

**Fax: 973-492-6372**

**References Available Upon Request**

# 2004 Proud Sponsor Directory

## **TOTAL CONTROL, INC.**

Athletic Field Management & Consulting  
Jim Hermann, CSFM  
P.O. Box 422, Lebanon, NJ 08833  
Ph/Fax: 908-236-9118 jimtc@att.net

## **US ATHLETIC FIELDS, INC.**

Sports Field Maintenance, Renovation & Construction  
John McKnight and Jim Gilligan  
P.O. Box 38 – Skillman, NJ 08558  
609-466-2846 Fax: 609-466-1808  
jim@usathleticfields.com

## **STORR TRACTOR COMPANY**

Turf, Irrigation and Ballfield Equipment  
3191 Highway 22  
Somerville, NJ 08876  
908-722-9830 Fax: 908-722-9847

## **DEBUCK'S SOD FARM OF NY, INC.**

Growers of Premium Quality Turfgrass Sod  
Leonard M. DeBuck, President  
120 DeBuck's Drive, Pine Island, NY 10969  
(845) 258-4131, Fax (845) 258-7637  
lmdebuck@warwick.net

## **GSI CONSULTANTS – TURFCON DIV.**

Dr. Henry Indyk, Sports Field Consultant  
732-247-8026

## **WILFRED MAC DONALD, INC**

Turf Equipment Specialists  
Sales-Bernie White, Mike Clifford, Tim Kerwin  
19 Central Blvd., S. Hackensack, NJ 07606  
888-831-0891 ex 114 Fax: 201-931-1730  
sales@wilfredmacdonald.com

## **MENDHAM GARDEN CENTER**

Turf Products  
Mendham – 908-543-4178  
Chester – 908-879-5020  
Annandale – 908-730-9008

## **MODERN HANDLING EQUIPMENT OF NJ**

Material Handling Equipment Sales & Rentals  
Paul Richardson  
75 New Street, Edison, NJ 08837  
(732) 738-9200 (800) 846-5840 F(732) 738-6173  
Email: www.moderngroup.com

## **PARTAC/BEAM CLAY**

Your "One-Stop Source" For  
Baseball and Sports Turf Surfaces & Supplies!  
Kelsey Park, Great Meadows, NJ 07838  
(800) 247-BEAM, (908) 637-4191  
Fax (908) 637-8421, partac@goes.com

**PUT YOUR AD HERE: To become a Proud Sponsor  
Call 908-730-7770 \$150 FOR ONE YEAR**



# Storr Tractor Company

Distributors of Commercial Turf Equipment & Irrigation  
New Jersey State Contract Vendor



The Groundsmaster 4100-D is the most powerful mower  
in its class with high quality cutting performance.



Count on it.

3191 Route 22  
Somerville, NJ 08876  
908-722-9830

---

Serving the Industry  
Since 1945

Or Current Occupant

Bradley Park  
 Rutgers University, Dept. of Plant  
 Bio/Pathology  
 59 Dudley Road  
 New Brunswick, NJ 08901

**SportsTurf**  
 MANAGERS ASSOCIATION

Experts on the Field, Partners in the Game.

**THE GREATEST TEAM ON TURF!**

Wilfred MacDonald is your team when it comes to athletic field equipment. We offer a wide variety of equipment from striping reel and rotary mowers to athletic field conditioners, line strippers, groomers, top dressers, aerifiers and more! Our comprehensive line of Jacobsen, Smithco, Turfco, National and Vertidrain gives you the largest variety of turf equipment to choose from! Contact your sales representative today for a demonstration!



Wilfred MacDonald, Inc  
 19 Central Boulevard  
 South Hackensack, NJ 07606  
 888-831-0891  
[www.wilfredmacdonald.com](http://www.wilfredmacdonald.com)

Sales Representatives:  
 Bernie White  
 Mike Clifford  
 Tim Kerwin  
 Mike Pelrine

