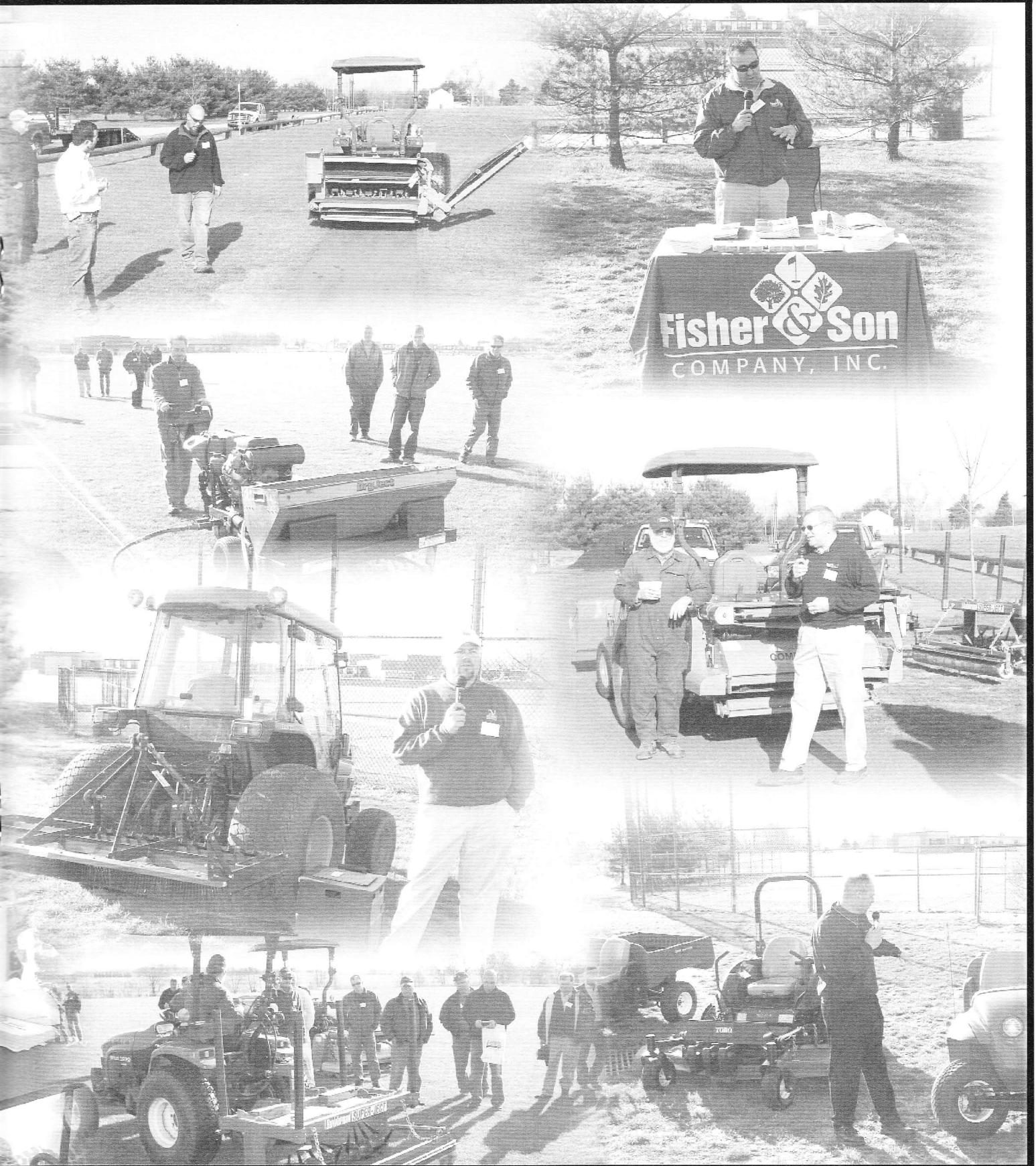
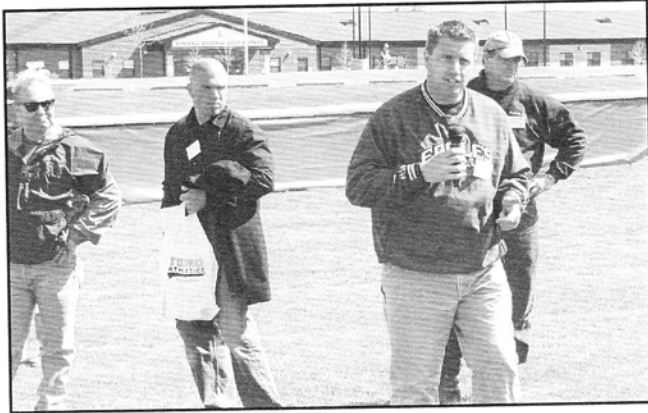


ay High School, Woolwich Township, NJ



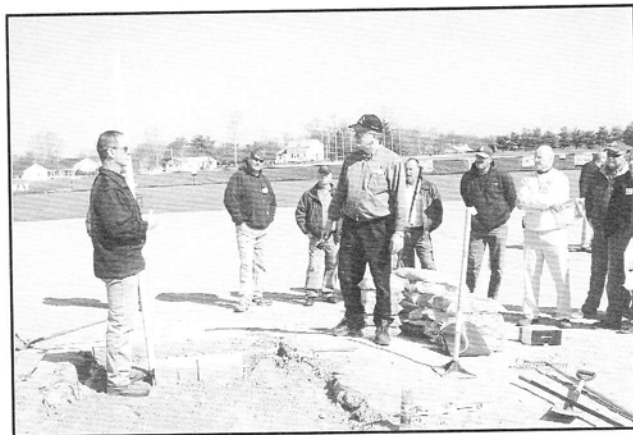
Spring Field Day, April 9, 2009: Kingsway High School and Coombs Sod Farm



Logo creation:
Tony Leonard, Philadelphia Eagles



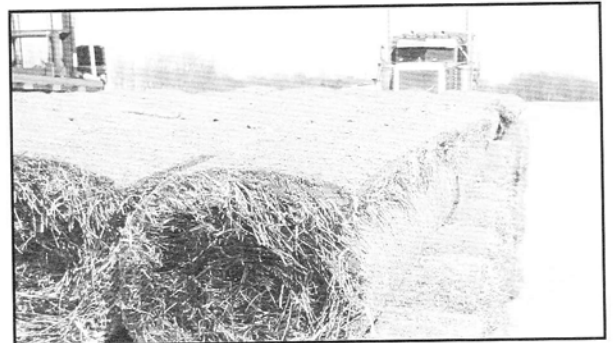
Kingsway High School Football Field:
Kevin Shipman



Mound construction:
Scott Bills, Northern Nurseries and
Ron Martin, Mar-Co Clay Products



Skin surface laser grading:
Sean Connell, Georgia Golf Construction



Sod rolls: Coombs Sod Farm



Big roll sod harvesting: Coombs Sod Farm



Small
roll sod
harvesting:
Coombs
Sod Farm



Install Confidence.® Install Rain Bird.®



A well-conceived irrigation plan requires sound thinking and reliable products that deliver long after installation. For nearly seven decades, products that bear the Rain Bird name have been specified more often because they are the measure of performance.

RAIN BIRD®

*For more information on
Rain Bird products, contact:*

Bill Wise
Area Specifications Manager | Rain Bird Corporation
Mobile: (215) 439-0093 | E-Mail: bwise@rainbird.com

What's a Field Day?

(continued from page 8)

are answered here. The researchers will highlight what they have found and what are other questions still need to be answered. For those of you needing pesticide credits you will find a healthy amount of pesticide credits for New Jersey and many neighboring states.

If you get the opportunity to attend this year make sure you bring your questions. You may also want to bring a notepad to write down all of the tips that you will get during the day. Also, bring your appetite because the barbeque style lunch has become a field day tradition. And save room for the brownies.

Perdro Perdomo is Director of Research & Regulatory Affairs, Cleary Chemical Corporation; and Board Member and Field Days Chairman, NJTA.

Just a Reminder:

SFMANJ has a new address and phone number:

**P.O. Box 205
Pennsville, NJ 08070
856-514-3179**

Our mail and phone calls have been forwarded since last August, however that will soon stop.

Please advise your administrators of our new address and phone number.

Also, our new email address is :

mail@sfmanj.org

Thank You!

Beam Clay®
Baseball Diamond Mix
Pitcher's Mound Mix
Home Plate Mix
Infield Conditioner
Mound Bricks
Mound Top-Dressings
Permanent Pitcher's Mound
& Batter's Box Pads
Warning Track

Pro's Choice®

Diamond Pro®

Stabilizer®

Hilltopper®

Diamond Dry®

Nail Drags & Scarifiers

Drag Mats

Cocoa Mats

Infield Grooming Equip.

Mound Bricks

Mound Building Tools

Batter's Box Templates

Cleat Cleaners

Batting Practice Screens

Batting Practice Mats

Backstops

Batting Cages

Batting Tunnels

**YOUR "ONE-STOP SOURCE"
FOR AMERICA'S
BASEBALL & SPORTS TURF
SURFACES & SUPPLIES!**



**A SUPPLIER TO EVERY MLB TEAM,
OVER 150 MINOR LEAGUE TEAMS,
OVER 700 COLLEGES AND THOUSANDS OF
TOWNS & SCHOOLS WORLDWIDE!**

**800-247-BEAM (2326)
www.BEAMCLAY.com**

**OVER 200 INFIELD & SPORTS TURF PRODUCTS
INCLUDING REGIONAL INFIELD MIXES & RED WARNING TRACKS
BLENDED FOR EVERY STATE & CLIMATE
FROM BULK PLANTS NATIONWIDE!**

PARTAC PEAT CORPORATION - KELSEY PARK, GREAT MEADOWS, NJ 07838

**"The best infield mix I've ever used!"
— GEORGE TOMA**

FenceGuards™

DuraPad™
On-Deck Circles

Hollywood® & Schutt® Bases

Rogers® Break-Away Bases

Soft-Touch™ Bases

Mautz® Athletic Field Paints

Athletic Field Stencils

MarkSmart™
Layout Systems

Jiffy® Line Stripers

Field Marking
Equipment & Material

Permanent Foul Lines

Yankee® Rakes

Midwest Rakes

Rain Covers

Safety Fencing

Windscreen

Wall Padding

Ball & Barrier Netting

Benches / Bleachers

Watering Equipment

Water Removal Equipment

Geotextile Fabrics

Top-Dressing

2009 Proud Sponsor Directory

US ATHLETIC FIELDS, INC.

Sports Field Maintenance, Renovation & Construction

John McKnight and Bill Siegel
PO Box 38 - Skillman, NJ 08558
609-466-2846 Fax: 609-466-1808
john@usathleticfields.com

STORR TRACTOR COMPANY

Turf, Irrigation and Ballfield Equipment
Sales - Fred Castenschiold, Kevin Hoban, Steve Bradley
3191 Highway 22 Somerville, NJ 08876
908-722-9830 Fax: 908-722-9847

WILFRED MAC DONALD, INC.

Turf Equipment/Rentals
Sales-Bernie White, Mike Clifford, Steve Kopach
19 Central Blvd., S. Hackensack, NJ 07606
888-831-0891 ex 114 Fax: 201-931-1730
sales@wilfredmacdonald.com

PARTAC/BEAM CLAY

Your "One-Stop Source" For
Baseball and Sports Turf Surfaces & Supplies!
(800) 247-BEAM, (908) 637-4191
Fax (908) 637-8421, sales@partac.com
Website: www.beamclay.com

COVERMASTER, INC.

Baseball and football field covers and accessories
Natural turf covers & EVERGREEN ä turf blankets
800-387-5808 Fax 416-742-6837
covermaster.com info@covermaster.com

Put your ad here:

**To become a Proud Sponsor Call:
856-514-3179 \$150 for one year**

SFMANJ Field of the Year Contest 2009

Sports Field Managers Association of New Jersey is announcing its annual
Field of the Year (FOY) contest.

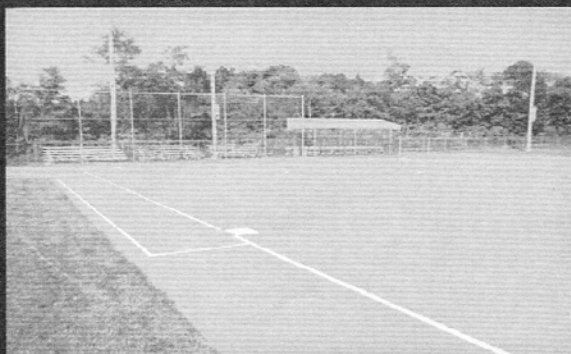
ELIGIBILITY:

- Must be a current member of SFMANJ
- Only school and parks/recreation fields are eligible
- Must be a natural grass field/fields

CRITERIA:

Award will be presented basis:

- Playability and appearance of the playing surfaces
- Describe your maintenance program and what you did to improve your field
- Describe yearly budget used for this field
- Feel free to have sports groups in your photo



Monroe Township Softball Field - SFMANJ
Field of the Year 2009

SUBMITTING YOUR ENTRY:

Entries are to be submitted by mail and must be received by September 30, 2009. Entries are limited to 10 color photos. Please include the name, location and owner of the facility, along with your name, position, and contact number.

Mail to:
SFMANJ 2009 FOY Contest
PO Box 205
Pennsville, NJ 08070

OR Email:
hq@sfmanj.org

AWARDS:

Winner will be honored with a plaque at New Jersey Turfgrass and Landscape Conference & Expo in December 2009 and will be featured in an article in SFMANJ *Update* newsletter. The winner will also receive a two-night stay at the Trump Taj Mahal, Atlantic City and three days of education and trade show admission at Expo 2009.

NOTE:

Photos will **not** be returned and may be used on SFMANJ website and promotional settings.

THE POLITICS OF SPORTS FIELD MANAGEMENT - PART 3 OF A SERIES

Power and Control - Do We Really Have Any?

By Don Savard, CSFM, CGM

For many, the thought of Organizational Politics conjures up images of people being manipulated and hard fought power struggles. We all want to be in control. After all, control means power. Power helps you get things done so more control seems to equal more power. Or, said another way, if not to control everything around us, at least to not let external forces control and manipulate us. For the less Machiavellian among us, we just want to go to work, do a good job and not be hassled by people. Like it or not, conflicts with people, whether it's the people we work for, work with, or deal with in some way make us feel like someone else is in the driver's seat. We feel powerless and not in control.

The truth is, I have very little power. I have no power over the people I come in contact with, the places where I work or things I use to do my job. People still do what people do. Some years my sports fields are better than other years. I have some influence of course, but I really don't control the outcome. I have no power or control over the weather. Well maintained machinery occasionally fails. I have no power over whether a delivery of materials shows up when I specify it. People don't do what they promise. Budgets get cut. Sometimes things just happen.

That's it. Powerless!

But I don't have to be defeated. Especially, if I take care of myself, keep my attitude under control, and I keep things in the proper perspective.

Here is the paradox. By knowing what I have no power over means that I don't have to waste what power I do have on the things that I have no power over. And that is empowering!

For example, when a game has to be to be played in the rain, my field is probably going to be trashed. I might not have the power to stop the game, but I can do two things. First, I need to find acceptance of the things I cannot change. Why? I cannot control the weather, or what people do. It is what it is. If I can't change it, I don't have to worry about it because I can't control it. All I have to do is accept it. I don't even have to like it. Now I have to do the second thing - I have to deal with it. If I know my capabilities, the limits of my authority, and use my tools and talents to change the things I can; here is what I can do:

- I can advise the decision maker the consequences of playing on a saturated field.
- I can adjust my turf management program to the conditions.
- I can submit a detailed itemized bill for field repair.
- I can use tact respect and diplomacy when dealing with people.

Notice that in these last statements, I have self control. That is my power. If I take care of myself by tending to my basic needs - not be hungry, angry, and lonely or tired - I have a better chance of maintaining self control. So you see, I might not be able to control the outcome, but I don't have to make it worse. My advantage is I am only responsible for what I control, not what I can't control.

I just need to know what I have to accept and what I have to change. The skill is in knowing what is no longer acceptable, what needs to be changed, how and when. But please remember, that when the winds of change blow hard enough, the most trivial of things can become deadly projectiles.

NEXT ISSUE: Putting it all to Work- Best Practices for Dealing with People

Don Savard is a Certified Sports Field Manager (CSFM) and Certified Grounds Manager (CGM); Director, Athletic Facilities and Grounds, Salesianum School; and President, SFMANJ

High Quality Bluegrass & Tall Fescue

Sand Sod grown on Hammonton sandy, loam-type soil designed for today's specialized modern athletic fields

Visit Us at Our Updated Web Site:

www.ttfarms.com

Our Completely Irrigated 700-acre farm allows production and deliveries to parts of Pennsylvania, Delaware, New York and all of New Jersey.

Labor Saving Big Rolls, please call for custom installation prices.

800-222-0591



**TUCKAHOE
TURF FARMS, INC.**

"Instant Lawns"

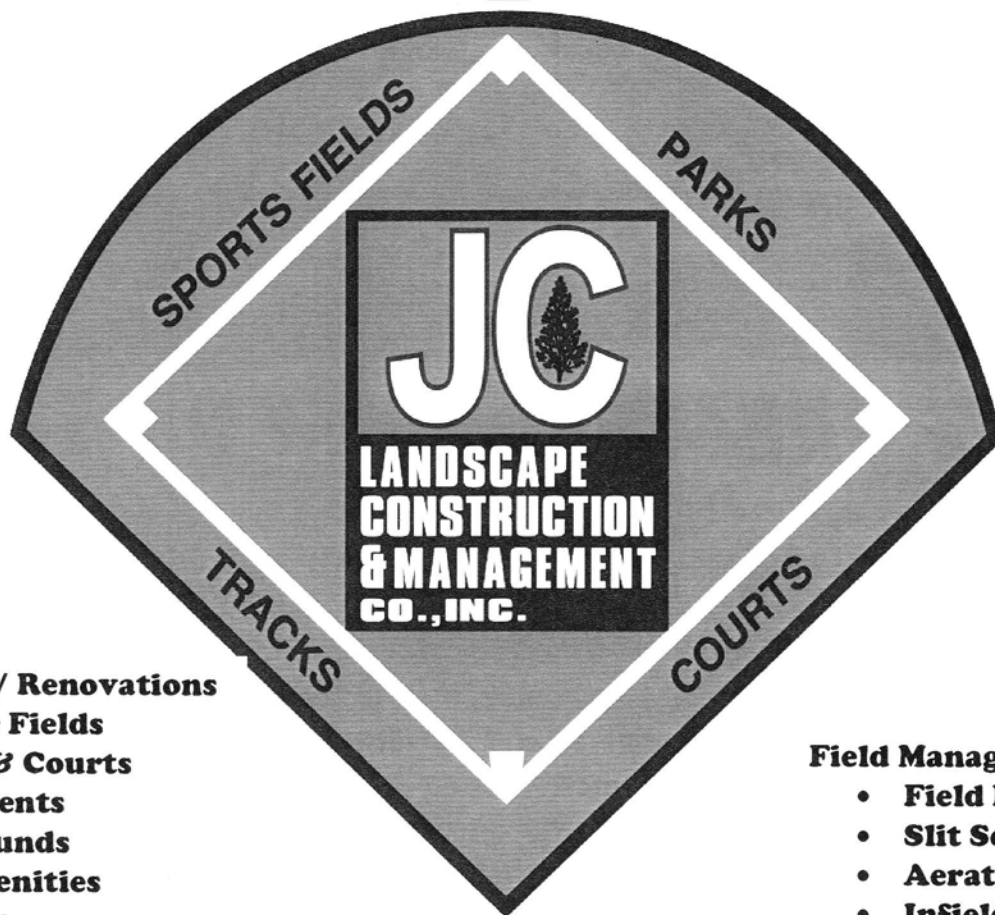
609-561-7184
609-561-0296 Fax
401 Myrtle Ave • P.O. Box 148
Hammonton, NJ 08037

ATHLETIC FIELD CONSTRUCTION SPECIALISTS

FOR OVER 20 YEARS

ESTABLISHED 1987

JC Landscape Construction is a full service Athletic Facility Contractor, registered with the state of NJ, NJDPMC and the NJSCC for Board of Education projects and are fully insured and bonded.



Construction / Renovations

- **Athletic Fields**
- **Tracks & Courts**
- **Field Events**
- **Playgrounds**
- **Site Amenities**
- **Drainage**
- **Underground Utilities**
- **Laser Grading**

Field Management

- **Field Repairs**
- **Slit Seeding**
- **Aeration**
- **Infield Maintenance**
- **Consultations**

Contact us today for an evaluation of your facility

Tel: 973-628-1533

Fax: 973-628-1883

References Available Upon Request

UNDERSTANDING WHAT A SEED TAG MEANS TO YOU

By Jim Gavigan, CSFM

(Continued from page 7)

Now, let's take a look at the actual copy of a seed tag label to go over PURE LIVE SEED calculations:

Product: SUPERIOR ATHLETIC MIX

LOT NUMBER: M123-7-482 Item: 083201

% PURITY	COMPONENT	% GERM	ORIGIN
29.55	BILTMORE TALL FESCUE	90	OR
24.89	PADRE TALL FESCUE	90	OR
24.63	MAGELLAN TALL FESCUE	90	OR
13.8	LAKESHORE KENTUCKY BLUEGRASS	88	OR
5.98	EXCURSION KENTUCKY BLUEGRASS	88	WA

OTHER INGREDIENTS

		NOXIOUS WEEDS
0.02	OTHER CROP SEEDS	NONE FOUND
1.33	INERT MATTER	
0.00	WEED SEED	

DATE TESTED: 07/08

IN CA/NY/NH/NJ/PA/MN SELL BY: 10/09

NET WEIGHT: 50 LBS

SHIP TO:

DC

AMS 635

PURE LIVE SEED CALCULATION

All purity percentages on the seed label are based on the bulk weight of the seed product. The PURE LIVE SEED (PLS) content is defined as the percentage of purity x the percentage of germination. To figure the PLS on the bag, each component should be calculated separately, than added together.

Component	Purity	Germination (%)	Pure Live Seed (%)
Biltmore	29.55	90	26.6
Padre TG	24.69	90	22.22
Magellan TF	24.63	90	22.17
Lakeshore KB	13.8	88	12.14
Excursion KB	5.98	88	5.26
Total PLS (%)			88.39

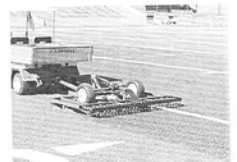
A 50 pound bag of this seed contains 44.20 pounds of PLS (50 lbs x 0.8839)

Jim Gavigan, CSFM is a Certified Sports Field Manager (CSFM); and member of the SFMANJ Board of Directors

THE GREATEST TEAM ON TURF!



Wilfred MacDonald is your team when it comes to athletic field equipment. We offer a wide variety of equipment from striping reel and rotary mowers to athletic field conditioners, line stripers, groomers, top dressers, aerifiers, and the latest in artificial turf equipment. Our comprehensive line of Jacobsen, Smithco, Turfco, Kubota, and Redexim-Charterhouse gives you the largest variety of turf equipment to choose from. Contact your sales representative today for a demonstration!



Wilfred MacDonald, Inc
19 Central Boulevard
South Hackensack, NJ 07606
888-831-0891
www.wilfredmacdonald.com

Sales Representatives:
Bernie White
Mike Clifford
Tim Kerwin
Bill Luthin



BEN SHAFFER & ASSOCIATES Inc.

Many items on
State Contract

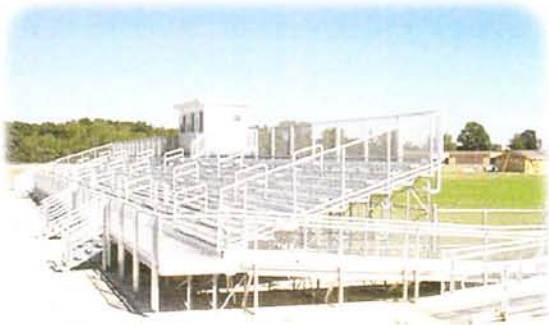


1-800-953-2021

sales@benshaffer.com

www.benshaffer.com

PARK, PLAYGROUND & STREETScape SOLUTIONS



Tennis Nets
Sports Goals
Water Fountains
Bleachers
Benches
Bases
and much more!



Experience the Ben Shaffer Difference
Serving NJ since 1921