

**Loads faster. Cleans faster. But please,
no hugging the line painter.**

© 2011 Toro. All rights reserved.



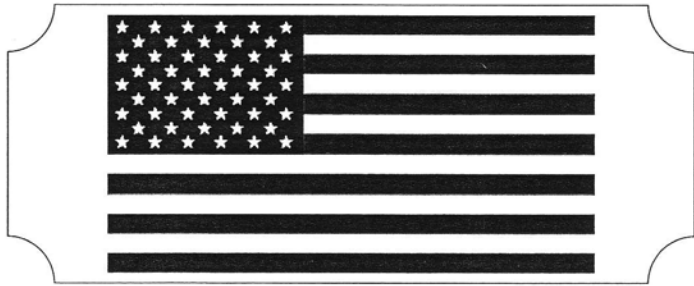
*Toro Xtreme
patent: note available*

Toro[®] just made line painting a whole lot better from start to finish. Introducing the Toro Line Painter 1200 with an innovative Express Clean System that cleans out up to 5-times faster. Meantime, its Floating Spray Head leaves consistent lines even on your roughest fields, spraying from the front, back, left or right. To find out more visit torosports.com/linepainter

Storr Tractor Company
Branchburg, NJ 908-722-9830



Count on it.



WELCOME NEW & RENEWED SFMANJ MEMBERS

Currently we have 279 new & renewed members. In December 2007, SFMANJ mailed invoices for 2008 membership dues to all current members. If you did not receive an invoice, please contact us at 856-514-3179 or download the membership form available at www.sfmanj.org. Mail membership dues direct to SFMANJ, PO Box 205, Pennsville, NJ 08070.

- | | |
|----------------|-------------------------------------|
| Bruni, Paul | Delaware Valley Spray Service, Inc. |
| Dooley, Jerry | Clayton Sand Company, LLC |
| Martin, Thomas | Pritchard Industries, Inc. |
| Perrine, Wes | Greenpro Materials |

2008 SFMANJ Board of Directors

- President*Craig Tolley, County College of Morris
Vice PresidentFred Castenschiold, Storr Tractor Co.
SecretaryScott Bills, Northern Nurseries
TreasurerMike Viersma, The Viersma Companies

DIRECTORS

- Sean ConnellGeorgia Golf Construction
 Jeff Cramer, CPWMHowell Township
 Jim GatesJim Gates & Co., Inc.
 Jim Gavigan, CSFMJim Gavigan Consulting
 Matt OliviPiscataway Board of Education
 Brad ParkRutgers University
 Don Savard, CSFM, CGMSalesianum School

- Advisor:**Dr. James Murphy, Rutgers University
Executive Secretary:Debbie Savard

MISSION STATEMENT:

Committed to enhancing the professionalism of athletic field managers by improving the safety, playability and appearance of athletic fields at all levels through seminars, field days, publications and networking with those in the sports turf industry.

Contact us at:

- PO Box 205 • Pennsville, NJ 08070
 Web site: www.sfmanj.org
 Email: hq@sfmanj.org
Ph/fax: 856-514-3179

National Organization
 Sports Turf Managers Association

- www.stma.org
 Email: stmainfo@sportsturfmanager.org
Phone: 800-323-3875

SFMANJ Annual Membership Registration Form
 *receive update information by email

Name _____
 Title _____
 Employer _____
 Address _____
 City _____
 State _____ Zip _____
 County _____
 Phone _____ Fax _____
 *E-mail _____
 Signature _____

Individual\$50
 Associate\$50
 Organization/Institution\$50
 Additional member from facility\$30
 Commercial/Contractor/Vendor/Supplier\$105
 Additional member from company\$35
 Student\$15

Send with Check or voucher to:
SFMANJ
 P.O. Box 205 • Pennsville, NJ 08070

Inside This Issue

Welcome New & Renewed Members	3
Membership Form	3
SFMANJ Board of Directors	3
SFMANJ Has a New Executive Secretary	4
Q & A with Dr. James Murphy	7
Rutgers Corner - Broadleaf Weed Control in Cool Season Turfgrass	8
2008 Proud Sponsors	9
33rd Annual Green Expo - Turf & Landscape Conference 2008	10-11
Calendar of Events	14
Applying Gypsum: When is it Really Needed?	16

This newsletter is the official bi-monthly publication of the Sports Field Managers Association of New Jersey.

**For information regarding this newsletter, contact:
 SFMANJ at (856) 514-3179 or Brad Park at (732) 932-9711, x127**

Editor: Brad Park, Rutgers University
 Email: park@aesop.rutgers.edu

SFMANJ does not necessarily support the opinions of those reflected in the following articles.

SFMANJ HAS A NEW EXECUTIVE SECRETARY!

By: Craig A. Tolley

In the last issue of SFMANJ *Update* I had to announce the departure of our executive secretary. Since that time, the board created a search charged with filling the position. I would like to announce that we have completed that task, and welcome to our association Mrs. Debra Savard. Debra has been appointed to fill the position of executive secretary for the SFMANJ. Our search committee (consisting of Brad Park, Jeff Cramer, and myself) interviewed several candidates and unanimously agreed on Debbie.

Debbie comes to us with a broad range of experience in office management, bookkeeping, and customer service. She also has an extensive background in graphic design and printing. The search committee felt that Debbie's unique experience and skills would greatly benefit our association. She presented herself as very positive, energetic, and motivated individual.

After reviewing all the candidates the search committee felt that Debbie would be the best fit for SFMANJ. Please join the board in welcoming Debbie to our association. As part of our transition to the new executive secretary we have changed the SFMANJ mailing address and phone number.

SFMANJ
PO Box 205 • Pennsville, NJ 08070
(Ph) 856-514-3179

Should you have questions regarding these changes please feel free to contact myself or any of the board members with questions.

*Craig A. Tolley is Assistant Professor,
County College of Morris; and SFMANJ President*

You're Always Ahead of the Game with a COVERMASTER® Raincover...

"Great Service..., The Best..."

wrote **Chip Baker**, Asst. Baseball Coach,
Florida State University, Tallahassee, FL

Chip's comments confirm what we hear from the many groundskeepers who use a COVERMASTER® raincover to keep their fields dry and ready for play.

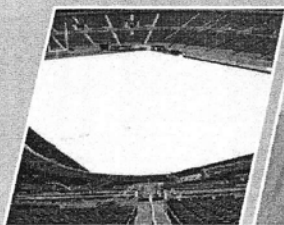
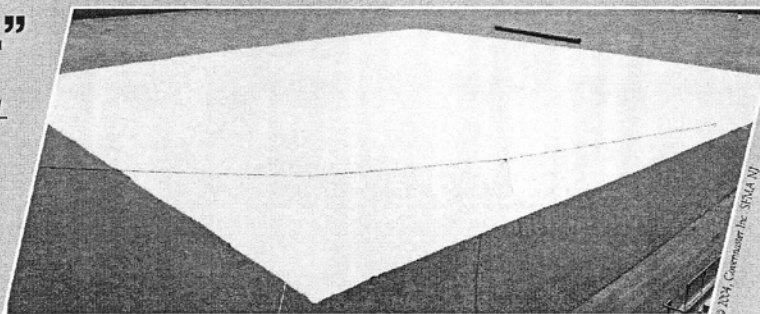
Call us and we'll gladly tell you more.

The COVERMASTER® Advantage...

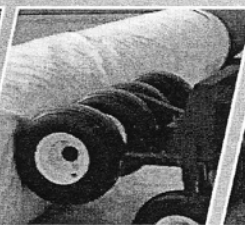
- Superior in strength and UV resistance
- Outstanding heat reflective properties
- Light weight - easy to handle
- Widest materials for least number of seams
- Largest choice of weights and colors
- Backed by truly dependable warranties

TARP MACHINE VIDEO!

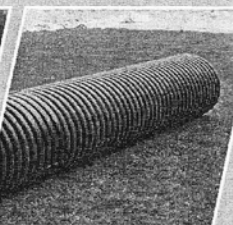
Call, fax or e-mail for a free video, material samples and a brochure.



Covers for football and soccer fields are also readily available.



TARP MACHINE™ lets you roll the cover on and off in minutes.



TARPMATE™ roller comes in 3 lengths with safety end caps.

COVERMASTER™
COVERMASTER
COVERMASTER
MASTERS IN THE ART OF SPORTS SURFACE COVERS

CALL TOLL FREE
1-800-387-5808

covermaster.com
E-MAIL: info@covermaster.com



COVERMASTER INC., 100 WESTMORE DR. 11-D, REXDALE, ON, M9V 5C3 TEL 416-745-1811 FAX 416-742-6837

ATHLETIC FIELD CONSTRUCTION SPECIALISTS

FOR OVER 20 YEARS

ESTABLISHED 1987

JC Landscape Construction is a full service Athletic Facility Contractor, registered with the state of NJ, NJDPMC and the NJSCC for Board of Education projects and are fully insured and bonded.



Construction / Renovations

- Athletic Fields
- Tracks & Courts
- Field Events
- Playgrounds
- Site Amenities
- Drainage
- Underground Utilities
- Laser Grading

Field Management

- Field Repairs
- Slit Seeding
- Aeration
- Infield Maintenance
- Consultations

Contact us today for an evaluation of your facility

Tel: 973-628-1533

Fax: 973-628-1883

References Available Upon Request



**Dr. Henry W. Indyk
Graduate Fellowship
in Turfgrass Science**

As many of you know, the turfgrass industry lost a dear friend and colleague in September 2005. We will all miss Henry very much and would like to insure that his legacy lives on. The Indyk family would like to establish a memorial fellowship to support graduate students interested in applied turfgrass science. This fellowship is being created to help assure that tomorrow's graduate students have the financial resources to get an advanced degree in turfgrass science at Rutgers University. To fund a full graduate assistantship each year in Henry's name, we will need to raise a total of \$400,000. Your generous support at this time will bring us closer to reaching this goal.

To make a tax-deductible contribution today, please send a check payable to the Rutgers University Foundation, 7 College Avenue, New Brunswick, NJ 08901. Be sure to indicate "Indyk Fellowship, Turfgrass" in the memo portion of your check. If you desire, you may provide a donation in the form of a pledge payable over several years.

For information on other ways to support this fellowship, please contact Dr. Bruce B. Clarke, Director – Rutgers Center for Turfgrass Science (732-932-9400, ext. 331; or clarke@aesop.rutgers.edu) or John Pearson, Director of Leadership Gifts at the Foundation, by calling (732) 932-7899 or email: pearson@winants.rutgers.edu

**NATIONAL SEED
PROFESSIONAL TURF PRODUCTS**

**Specializing in Quality
Grass Seed to Meet All Your
Turf Performance Standards**

Call For a Catalog

800-828-5856

Carry a full line of quality mixtures especially formulated for:
SPORTS & ATHLETIC FIELDS

LOW MAINTENANCE AREAS
GENERAL GROUNDS
GOLF, LAWN & RECLAMATION

**Technical Agronomic Support and
Custom Blending Available**



PHILADELPHIA TURF COMPANY

Fifty-five dedicated people with the best parts, products and service for the green industry in Eastern Pennsylvania, Southern New Jersey and New Castle County Delaware.

Phone: 215-345-7200

Fax: 215-345-8132

Web: www.phillyturf.com

Mail: Box 865

Doylestown, PA 18901-0865

Ship: 4049 Landisville Road

Doylestown, PA 18901

QUESTIONS AND ANSWER WITH DR. JAMES MURPHY

Q Is there any benefit to be gained by spraying off existing vegetation with a glyphosate product (i.e. Roundup PRO) prior to tilling with a Rota-dairon to a depth of 6.0 to 8.0" as opposed to tilling in green vegetation?

My objective is to add lime based on recommendations and till the existing infield topsoil before stripping it to install select fill material.

A Tilling in green vegetation isn't necessarily a problem - depends what the vegetation is and how dense/thick it is. I would spray off if

there are any difficult to control perennial weeds present - tilling won't kill all vegetation and surviving plant material will re-invade including the existing turfgrasses. Also, any large "mats" of dense/thick vegetation will form clumps in the tilled soil which may present problems during final grading and smoothing operations.

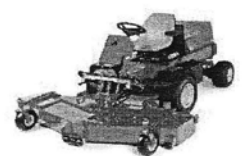
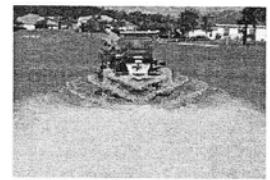
Dr. James Murphy is Turfgrass Management Extension Specialist, Rutgers University; and SFMANJ Advisor

DID YOU KNOW?

The 33rd Annual Green Expo Turf & Landscape Conference 2008 will be held at the Trump Taj Mahal Casino Resort in Atlantic City, NJ on December 9-11, 2008

THE GREATEST TEAM ON TURF!!

Wilfred MacDonald is your team when it comes to athletic field equipment. We offer a wide variety of equipment from striping reel and rotary mowers to athletic field conditioners, line strippers, groomers, top dressers, aerifiers and more! Our comprehensive line of Jacobsen, Smithco, Turfco, National and Vertidrain gives you the largest variety of turf equipment to choose from! Check out our new Rental Division for equipment rentals! Contact your sales representative today for a demonstration or rental!



JACOBSEN
A Tennant Company

TURFCO

NATIONAL MOWER COMPANY
SINCE 1972

Wilfred MacDonald, inc
19 Central Boulevard
South Hackensack, NJ 07606
888-831-0891
www.wilfredmacdonald.com

Sales Representatives:
Bernie White
Mike Clifford
Tim Kerwin
Steve Kopach-Rentals



Rutgers Corner - Broadleaf Weed Control in Cool Season Turfgrasses

By: Dr. Steve Hart*

Editor's Note: This article, along with information related to the effectiveness of herbicide active ingredients on specific broadleaf weeds, can be accessed as a Rutgers Cooperative Research and Extension Fact Sheet (FS385) at www.rcrc.rutgers.edu/pubs

The presence of broadleaf weeds not only reduces the aesthetic quality of the turf, but more importantly they compete with the desired turfgrass for water, nutrients, and light. Failure to control these weeds often results in a deterioration of the turfgrass stand over time. Broadleaf weed infestations are often symptomatic of a more basic cultural or soil problem in many cases. If these problems persist, weeds also will be a continuous problem. Thus, a sound weed management strategy not only includes removal of existing weeds, but also using corrective management measures for the factors causing poor quality turfgrass.

CULTURAL CONTROL OF BROADLEAF WEEDS

The numbers and types of broadleaf weeds found in turfgrass are greatly influenced by management and cultural practices. For example, close mowing and too little nitrogen favor white clover. Close mowing also favors weeds such as carpetweed, spurge, plantains, and dandelion. Poorly drained areas favor weeds such as ground ivy, while compacted sites favor knotweed and plantains.

Correcting improper management practices to maintain a dense, vigorous turf is the best and most lasting method for broadleaf weed control. Of particular importance are proper fertilization, mowing, and watering. Several broadleaf weed species cannot be satisfactorily controlled with proper use of herbicides, further increasing the importance of proper cultural management to reduce the opportunity for their establishment and spread.

Herbicides should be considered an aid, but not a cure, for broadleaf weed problems in landscaped turf.

CHEMICAL CONTROL OF BROADLEAF WEEDS

In turf where broadleaf weeds have become a problem, application of an effective herbicide may be necessary for their removal so that the turf can be improved through better management and cultural practices. Several herbicides are available for broadleaf weed control, but weeds vary in response to different products. Thus, proper identification of the weeds is essential before the most economical and effective herbicide is selected. Suggested resources for weed iden-

tification include "Weeds of the Northeast" by Richard H. Uva, Joseph C. Neal, and Joseph M. Ditomaso available through Comstock Publishing Associates (a division of Cornell University Press).

Also, two web sites can be accessed at:

www.rcrc.rutgers.edu/weeds and www.cook.rutgers.edu/~turf, then click on turfgrass weeds.

Two or more different herbicides are frequently sold as prepackaged mixtures. Most of the materials discussed are sold by several manufacturers, often under different trade names differing in formulation and concentration. Therefore, no rates are presented here. READ and FOLLOW carefully the label directions on the herbicide container. Applying rates too low may result in inadequate control, while applying rates too high may cause turfgrass injury. The following herbicides are available for the selective removal of broadleaf weeds from cool season turfgrasses.

2,4-D is the oldest and most widely used herbicide and provides broad spectrum weed control in turfgrass. This chemical is particularly effective for control of weeds with taproots such as dandelion, broadleaf plantain, mustards, and shepherd's purse. Amine formulations are most commonly used. However, the low volatile ester form of 2,4-D is often recommended for control of wild garlic and wild onion. Some weeds not controlled well by 2,4-D are white clover, chickweed, purslane, and ground ivy.

MCPA is chemically-related to 2,4-D and may be used as a substitute for 2,4-D in prepackaged mixtures. MCPA is not a broad spectrum herbicide as is 2,4-D and its use alone (i.e., not mixed with another herbicide) is not usually recommended.

MCPP is most effective in the control of several perennial or winter annual weeds such as chickweed and clovers.

DICAMBA controls many different weeds, several of them are not easily controlled by 2,4-D or MCPP. Of particular importance are the summer annual weeds that have a prostrate growth habit, including knotweed, purslane, and spurge. Dicamba however, does not control plantains.

DICHLORPROP (2,4-DP) AND TRICLOPYR are sold in prepackaged mixtures with 2,4-D and provide broad spectrum weed control.

(Continued on page 15)

2008 Proud Sponsor Directory

US ATHLETIC FIELDS, INC.

Sports Field Maintenance, Renovation & Construction
John McKnight and Bill Siegel
PO Box 38 - Skillman, NJ 08558
609-466-2846 Fax: 609-466-1808
john@usathleticfields.com

STORR TRACTOR COMPANY

Turf, Irrigation and Ballfield Equipment
Sales - Fred Castenschiold, Kevin Hoban, Steve Bradley
3191 Highway 22 Somerville, NJ 08876
908-722-9830 Fax: 908-722-9847

WILFRED MAC DONALD, INC.

Turf Equipment/Rentals
Sales-Bernie White, Mike Clifford, Steve Kopach
19 Central Blvd., S. Hackensack, NJ 07606
888-831-0891 ex 114 Fax: 201-931-1730
sales@wilfredmacdonald.com

PARTAC/BEAM CLAY

Your "One-Stop Source" For
Baseball and Sports Turf Surfaces & Supplies!
(800) 247-BEAM, (908) 637-4191
Fax (908) 637-8421, sales@partac.com
Website: www.beamclay.com

FISHER AND SON CO., INC.

Superior Products for the Turf and Horticultural Professional
Agronomic Services, Fertilizers, Seed, and Control Products
Jerry Schoonmaker (908) 967-7583
Tom DeFino (302) 419-8269
Mike Oleykowski (609) 410-0409

COVERMASTER, INC.

Baseball and football field covers and accessories
Natural turf covers & EVERGREEN ä turf blankets
800-387-5808 Fax 416-742-6837
covermaster.com info@covermaster.com

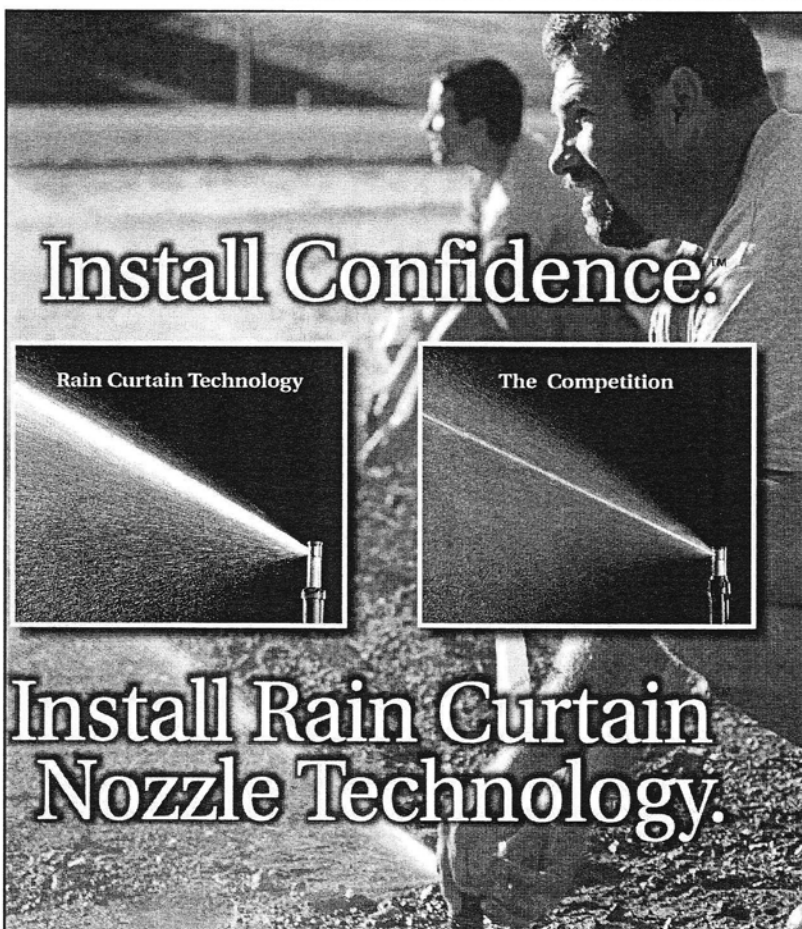
E.M. BROWN'S & SONS, INC.

Custom Athletic Field Seed Mixtures and Turfgrass Supplies
800-345-3344 Fax 908-806-8447
Marie Pompei 610-781-4256
www.fmbrown.com

Put your ad here:

To become a Proud Sponsor Call 856-514-3179

\$150 for one year



Install Confidence.

Install Rain Curtain Nozzle Technology.

Only Rain Bird rotors feature Rain Curtain™ Nozzle Technology that delivers uniform water distribution across the entire radius range for green grass results. Gentle, effective close-in watering around the rotor eliminates dry spots without seed washout, and larger water droplets assure consistent coverage, even in the windiest conditions.

Install Confidence. Install Rain Bird.

RAIN BIRD

FOR INFORMATION CONTACT:

BILL WISE

Contractor Account Manager

(610) 770-6885

33rd Annual Green Expo - Turf

December 9-11, 2008 • Trump Taj Maha

TUESDAY, DECEMBER 9, 2008

Credits, Credits, Credits!

We've packed our Tuesday schedule with pesticide applicator credits and your favorite speakers, so start off Expo with quality education and the credits you need to maintain your professional license!

9:00 - 11:30 AM CORE SESSION 5 Credits: CORE

- 9:00-10:30 **Understanding a pesticide's mode of action is the first step toward selection, effectiveness and safety**
Dr. Steve Hart, Rich Buckley and
Dr. Albrecht Koppenhöfer, Rutgers Univ.
- 10:30-11:30 **Pesticide Core Jeopardy: A game-show format to review pesticide safety and handling**
Mike Oleykowski, Fisher & Son

12:30 - 2:30 PM 3A SESSION 4 Credits: 3A, 6B, 8C, PP2

- 12:30-1:30 **Significant insect pests & other nasty beasts in the NJ landscape** Rich Buckley, Rutgers Univ.
- 1:30-2:30 **Controlling weeds in ornamentals is not as difficult as you might think. Dr. Jeff Derr, Virginia Tech Univ. Let's talk about controlling Invasive Weeds**
Dr. Jeff Derr, Virginia Tech Univ.

2:45 - 4:45 PM 3B SESSION 4 Credits: 3B, 6B, 8C, PP2

- 2:45-4:45 **Doing more with less: Developing a pest control program that will help you grow better grass... and better businesses.**
Dr. Jim Murphy, Dr. Steve Hart, John Buechner

12:30 - 4:00 PM GOLF SESSION Nutrients, the Golf Course and the Environment 1 Credit: 5, 3B, 6B, 8C, PP2

Last year, golf attendees asked us to pull together a program that touches on the environment, fertility, and the golf course. We've assembled a powerful lineup of speakers who will address those issues... and in this time of spiraling fertilizer costs, awareness of fertility choices can not only help you grow a healthy golf course but also keep your budget in line.

- 12:30-1:15 **What's up with all of the weeds in your ponds? An IPM approach to Pond Management**
Dr. Steve Souza, Princeton Hydro
- 1:15-2:00 **Foliar Fertility- a splash on the grass**
Dr. Roch Gaussoin, Univ. of Nebraska
- 2:15-3:00 **It's not easy being green: An organic approach to Golf Course Management**
Jeff Carlson, Vineyard Golf Club, MA
- 3:15-4:00 **How to Manage the Organic Matter in your Golf Greens... and why!**
Dr. RochGaussoin, Univ. of Nebraska

4:00 - 7:00 PM GRASS ROOTS, INC. presents: Golf Mix and Mingle Cocktail Reception

Thanks to Ken and Keith Kubik, Grass Roots Inc. once again is sponsoring a 3-hour cocktail reception for golf attendees. Many of you have told us that this is the social highlight of Expo, and that you enjoy greeting old friends and meeting new ones while enjoying the fabulous Kubik hospitality. Thank you, Grass Roots, for providing this opportunity to eat, greet, and network!

WEDNESDAY, DECEMBER 10, 2008

9:00 AM - 12:00 PM GENERAL SESSION

In addition to giving you some insight into the amazing science going on at Rutgers, this session will include a new version of Dr. Jim Murphy's management slide show. Our keynote speaker is a nationally known speaker who will provide us with a view of our industry's future. This year's general session is a must attend event!

- 9:00-9:05 **NJTA Annual Meeting**
- 9:05-9:10 **Official welcome from Rutgers University**
- 9:10-9:40 **Rags to Riches: Turf Management in 2008**
Dr. Jim Murphy, Rutgers Univ.
NJTA Environmental Stewardship Award Presentation
- 9:45-10:10 **Location, location, location... what turf species – and mixtures- go where? Dr. Bill Meyer, Rutgers Univ. NJTA Member of Year Award Presentation NJTA Recognition Award Presentation**
- 10:20-10:40 **Mating Disruption of Turf Pests- Sex and the City?**
Dr. Albrecht Koppenhöfer, Rutgers Univ.
- 10:45-11:10 **10 things you never knew about the Rutgers Turf Program... a peak behind the scenes**
Dr. Stacy Bonos, Rutgers Univ.
- 11:10-11:45 **What Lies Ahead for the Green Industry?**
David Crowe, DC Legislative & Regulatory Services
- 11:50-12:00 **NJTA Hall of Fame Award Presentation**

12:00 - 1:00 PM LUNCH sponsored by STORR TRACTOR COMPANY

One of NJTA's –and Rutgers- greatest champions is MaryLou DesChamps and the Storr Tractor Company. Once again they've sponsored your lunch, allowing you plenty of time to get back into the sessions for the education and credits you desire. Thanks MaryLou!

1:00 - 4:00 PM USGA GOLF SESSION

- 2 Credits: 3B, 6B, 8C, PP2 1 Credit: Core
- 1:00-1:30 **USGA Year in review**
Adam Moeller, USGA Agronomist
- 1:30-2:00 **Understanding the different pesticide chemistries currently used in the golf industry**
Dr. Mike Fidanza, Penn State Univ.
- 2:00-2:30 **Annual bluegrass weevil problems in 2008... let's look at their biology, ecology, and monitoring.**
Ben McGraw, Rutgers Univ.
- 2:30-3:00 **Chemicals update... what's new on the label**
- 3:00-3:30 **Resumes, interviewing, and power points: How best to impress and be selected**
Dr. Rich Hurley, Rutgers Univ.
- 3:30-4:00 **Trees and turf: A peaceful coexistence**
Dr. Roch Gaussoin, Univ. of Nebraska