

THE CHOICE OF THE PROFESSIONALS

**Athletic Field Construction
& Drainage Specialists**

Site Evaluations

Design/Build

Laser Grading

Renovations

Specializing in Sand/Slit Drainage Systems

235 County Line Road
Amityville, NY 11701
631-691-2381
Fax: 631-691-2392

Welcome New & Renewed SFMANJ Members

Currently we have 315 members. If you have not seen your name in this newsletter please call (908)730-7770 or email us at hq@sfmanj.org. ♦

Angiolelli, Lou	Hackensack DPW
Brick, Gary	Mainland Regional High School
Cognetta, Matthew	Rutgers University
Cunningham, James	John Deere
Eims, Wade	St. Joseph's Church
Fredericks, Robert	John Deere Landscapes
Hoffman, Bruce	Martin Stone Quarries, Inc.
Kimmerly, Shawn	Glenmac
Lewis, Art	Turf Specialties, Inc.
Majchrowski, Mariusz	St. Joseph's Church
Mecsey III, Joseph	Greenwich Township DPW
Oliver, John	West Windsor DPW
Olivi, Carl	Piscataway Twp Board of Ed
Purdie, Leon	Newark Public Schools
Saft, Mark	Mainland Regional High School
Sodano, Vince	Mainland Regional High School
Stamilla, Sal	Hackensack DPW

Field Day Vendors, Thanks for your support; without you there is no show!

Aer-Core, Inc Downington, Pa	Ben Shaffer & Assoc. Lake Hopatcong, NJ	Central Irrigation Elmsford, NY
DeBuck's Sod Farm Pine Island, NY	DVH Athletic Turf Mt Ephraim, NJ	E&M Golf Supply Pittstown Twp, PA
Finch Turf Equip North Wales, PA	Fisher & Son Co. Mt. Holly, NJ	Gametime Bricktown, NJ
Garden State Bobcat Freehold, NJ	Gregson-Clark Spraying Equip LeRoy, NJ	Holmes & McDowell Holmdel, NJ
Hustler Turf Equip Hesston, KS	JDL Equipment Doylestown, PA	John Deere Cary, NC
John Deere Landscapes Mountainside, NJ	Koonz Sprinkler Supply Springfield, NJ	Lasco Milford, NJ
KPM Exceptional Distrib. Kenvil, NJ	Levitt's LLC Parsippany, NJ	Lyons & Lyons Sales Co. Glen Arm, MD
MDS New Holland, PA	National Seed New Brunswick, NJ	Pride Landscape Supply So. Amboy, NJ
Professional Aerification Svcs. Mullica Hill, NJ		Rainbird Corp Allentown, PA
Red Sky Assoc. Rumson, NJ	Seley Industries Salem, OH	Storr Tractor Somerville, NJ
Terre Co, NJ Clifton, NJ	Till Paint Co. Woodbury Hts, NJ	Turf Specialties Lakeland, FL
Wilfred McDonald South Hackensack, NJ		

2004

SFMANJ Board of Directors

President Eleanora Murfitt-Hermann, CRS
Washington Twp Parks & Recreation

Vice President Jim Hermann CSFM
Total Control Inc

Secretary Fred Castenschiold
Storr Tractor Company

Treasurer Dean Marzocca
Dean's Lawn & Landscape Co.

Directors

Dr. James Murphy - Rutgers University

Jeff Cramer - Plainsboro Township DPW

Clare Liptak - Rutgers University

Brad Park - Rutgers University

George McCarthy - Spring Irrigation Co., Inc.

Robin VanDerlyn, Chatham School District

Advisor.....Dr. Henry Indyk
TurfCon GSI Consultants, Inc.

Mission Statement

Committed to enhancing the professionalism of athletic field managers in New Jersey by improving the safety, playability and appearance of athletic fields at all levels through seminars, field days, publications and *networking* with those in the sports turf industry.

Contact us at:

P.O. Box 370

Annandale, NJ 08801

Web Site - www.sfmanj.org

E-mail - hq@sfmanj.org

Ph/Fax - 908-730-7770

National Organization
Sports Turf Managers Association

www.sportsturfmanager.com

e-mail: SportsTMgr@aol.com

Phone: 1-800-323-3875

HIRING:

American Soccer Company, Inc is currently looking for an outside sales person to work in the state of New Jersey. Contact Vickie McDavid, Marketing Manager for SCORE at (310) 830-6161 ext. 185 ♦

Calendar of Events

October 7th Thurs., Sports Turf Workshop: Rutgers University Center for Turfgrass Science in cooperation with Sports Field Managers Assoc. of NJ. Held at Hort. Farm II-Ryders Lane, North Brunswick at 11am to 3:30pm. NJ DEP Pesticide Credits (3B). \$15 members, \$25 for non-members. Become a member and receive \$10 discount. Go to www.sfmanj.org for more info or call 908-730-7770.

October (next test) Playground Safety Course: New Jersey Recreation & Parks Assoc. Become a certified playground inspector. For more information, call Bill Foelsch at (732)568-1270.

November 15-19th 89th Annual League of Municipalities Conference: Atlantic City Convention Center. Go to www.njslom.org for more information.

December 7-9th 2004 New Jersey Turfgrass Expo: Taj Mahal, Atlantic City. Mark your calendar. State tune for more info. ♦

Letter from the President

Membership Promotion for SFMANJ and STMA

SFMANJ is currently in its fifth year of existence as of this October. We have worked hard to give our members quality education and information. We have grown in leaps and bounds. The membership has grown from 25 to over 300. Our first newsletter was published July 2001. It was a two-page copy produced in house (our house) and printed at Staples. Since that time "SFMANJ Update" has grown to a colored professionally produced 16-20 page publication. In addition, for the past two years all primary members have been provided with a yearly membership resource directory.

Two years ago the board of directors voted to employ a part-time executive secretary. Kathy Hopfel is an indispensable part of what keeps our organization growing. As our membership grows, her responsibilities and hours of service each month grow along with it.

The support from the green industry, Rutgers University and commercial businesses has been phenomenal. Please continue to use your resource directory when shopping for products, equipment and services. Support those that support SFMANJ.

Chapter Dues Increase

The New Jersey Chapter dues have not increased since our inception five years ago. We are proud to say our benefits have. Our members receive a complimentary subscription to "Update" our bimonthly newsletter, a resource directory, a \$10 discount on two field days and workshops, education at the NJTurfgrass Expo, a 10% discount on any Turfgrass classes taught at Rutgers University, opportunities to advertise your business, jobs, equipment sales; student

scholarships and support with your sports field related problems.

As you know, the cost to run the organization has increased. In order to continue offering these benefits and more we must increase dues for 2005. We will continue to provide quality information and education for the Sports Field Manager. Please adjust your budgets to show the following dues.

Individual	\$45
Associate	\$45
Organization/Institution	\$45
Additional member from facility	\$25
Commercial/Contractor	
Vendor/Supplier	\$100
Additional member	\$30
Student (ID required)	\$15

At the *National level*, Sports Turf Managers Association will again kick off a membership promotion, starting on October 1, that gives those joining from October 1, 2004 through December 31, 2004, membership from that point through December 31, 2005 at the 2005-membership rate. To see how you can earn referral bucks, which can be redeemed towards national membership dues or a trip to the National Convention in Phoenix, Arizona Jan. 19-23, 2005 go to www.sportsfieldmanager.com

Our *State chapter*, Sports Field Managers Association of NJ will be offering the same benefit to new Chapter members. This is the time to add a new member or tell a friend about the opportunities SFMANJ offers. **That's up to three months free membership when you join beginning Oct 1.** ♦

Eleanora Hermann, CRS
Washington Township Parks & Recreation
hq@sfmanj.org

Rutgers Corner – Does turfgrass wear reduce the severity of dollar spot?

By Brad Park, Rutgers University
park@aesop.rutgers.edu

We are conducting a study at Rutgers examining the affect of wear on various Kentucky bluegrass varieties throughout the entire growing season, and specifically in spring, summer, and fall. This research will be discussed as part of the *October Sports Field Workshop to be held at Rutgers' Hort. Farm II in North Brunswick, NJ on October 7, 2004.*

Initial observations have shown that some Kentucky bluegrass varieties are very wear tolerant in both spring and summer months. Unfortunately, some of these wear-tolerant varieties are highly susceptible to dollar spot, a turfgrass disease that affects New Jersey sports field turfgrass species including Kentucky bluegrass, perennial ryegrass, and tall fescue.

Dollar spot is caused by the fungus *Sclerotinia homoeocarpa* and the disease is most widespread during warm, moist weather and turfgrass growing on soils deficient in nitrogen is particularly susceptible. Symptoms of dollar spot include round, straw-colored spots which initially have the size of a "silver dollar" but may reach 4 to 6 inches in diameter in higher-cut sports turf. If left untreated with a fungicide labeled for dollar spot control, under environmental conditions favorable for the growth of the fungus multiple dollar spot infections may grow together or "coalesce" to form a significant disease infection in turfgrass.

In our Kentucky bluegrass traffic study at Rutgers, plots were treated with 16 wear passes per week for three weeks and 'Julia' Kentucky bluegrass showed little or no infection with dollar spot and excellent turfgrass cover, an indicator of superior wear tolerance. Conversely, where plots received no wear, Julia was riddled with approximately 70% dollar spot

infection. Julia has shown the greatest susceptibility to dollar spot among the varieties tested in our trial, including 'Midnight', 'Liberator', 'Princeton-105', and 'Touchdown'.

The fungus that causes dollar spot survives in unfavorable growing conditions as paper-thin flakes called "stromata" and as dormant mycelium in dead or living turfgrass tissue. Mycelium is a mass of interwoven filaments that comprises the vegetative body of a fungus. When favorable growth conditions exist in spring and early summer, the mycelium and stromata resume growth and development. The fungi infect turfgrass plants via cut leaf tips and leaf openings called "stomates" when plant surfaces are wet.

It is possible that the abrasive action of the wear simulator on the turfgrass canopy and soil/thatch interface significantly disrupted the dollar spot disease cycle/mycelium development, thus preventing noticeable disease infection on plots receiving passes with the wear

simulator. It appears that repeated turfgrass wear is keeping dollar spot severity in-check and potentially nullifying the need for fungicide application in worn plots. This observation *IS NOT*, however, a reason to cease managing traffic by rotating fields or suspending use of fields to allow recovery or applying a fungicide if an application is warranted.

This observation *IS* an argument for maintaining frequent mowing intervals. While mowing itself will not be a 100% preventative control of dollar spot, particularly for those varieties highly susceptible to the disease such as Julia, early morning mowing can have the affect of removing leaf moisture in the form of dew and thus helping to alleviate prolonged turfgrass leaf wetness which only exacerbates dollar spot development. ♦

Literature Cited

Shurtleff et. al. 1987. Controlling turfgrass pests. Prentice Hall, Inc. Englewood Cliffs, NJ.

You're Always Ahead of the Game with a COVERMASTER® Raincover...

"Great Service..., The Best..."

wrote **Chip Baker**, Asst. Baseball Coach,
Florida State University, Tallahassee, FL

Chip's comments confirm what we hear from the many groundskeepers who use a COVERMASTER® raincover to keep their fields dry and ready for play.

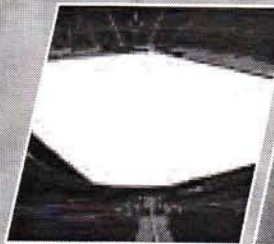
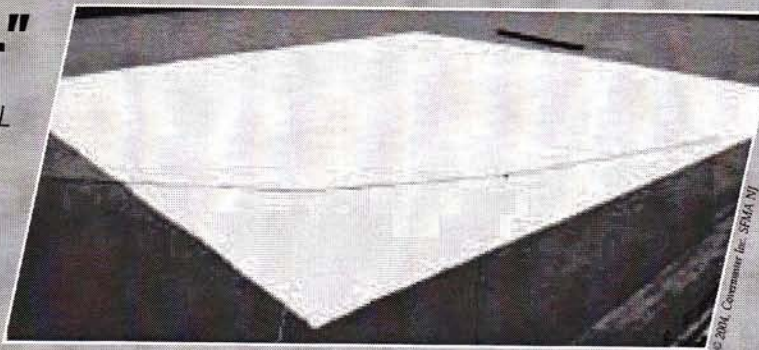
Call us and we'll gladly tell you more.

The COVERMASTER® Advantage...

- Superior in strength and UV resistance
- Outstanding heat reflective properties
- Light weight - easy to handle
- Widest materials for least number of seams
- Largest choice of weights and colors
- Backed by truly dependable warranties

TARP MACHINE VIDEO!

Call, fax or e-mail for a free video, material samples and a brochure.



Covers for football and soccer fields are also readily available.



TARP MACHINE™ lets you roll the cover on and off in minutes.



TARPMATE™ roller comes in 3 lengths with safety end caps.

COVERMASTER™
COVERMASTER
COVERMASTER
MASTERS IN THE ART OF SPORTS SURFACE COVERS

CALL TOLL FREE
1-800-387-5808

covermaster.com

E-MAIL: info@covermaster.com

COVERMASTER INC., 100 WESTMORE DR. 11-D, REXDALE, ON, M9V 5C3 TEL 416-745-1811 FAX 416-742-6837

MEMBER



Words of Wisdom

By Jim Hermann, CSFM

Once there was a young bull and an old bull grazing up on the hill in the meadow. The young bull says to the old bull "come on, lets run down the hill, break down the fence and talk to one of those pretty little heifers in the next pasture" the old bull looks over at the young bull and says "how about if we walk down the hill, go through the gate and talk to *all* those pretty little heifers"? The young bull had knowledge. The old bull had experience and wisdom.

As sports field managers, we strive to acquire knowledge in our specific field of endeavor. We go to classes, field days, read books, articles etc. Wisdom is acquired when we begin to apply the knowledge we have gained. Wisdom could be considered a deeper understanding acquired through experience as it applies to our specific circumstances. It was once said, "knowledge is organized science, wisdom is organized life".

Ironically, we tend to gain more wisdom from our mistakes than from our successes. What doesn't work is sometimes more meaningful than what does. With this premise in mind, I would like to provide you with words of wisdom. Obviously, these mistakes were the product of others and I was merely an observer. "No bull"

· When calibrating a pendulum type fertilizer spreader don't forget to divide the rate needed by 2 to compensate for the overlap. Or, "sharpen your mower blades".

· Don't fertilize with a nitrogen source that relies on microbial action for release in the late fall and follow up with water-soluble nitrogen in spring unless you take that application into consideration. Can you say "double whammy"

· Don't use a compression fitting to repair a 3" main line irrigation leak in the vicinity of an above ground elbow. You would be astonished at how high in the air that fitting can fly when 80 pounds of air pressure causes failure of the connection to occur during system winterization. Someone told me, it sounds like a bomb going off.

· Be sure to tie down equipment on your trailer when transporting from

site to site. Bounce is not a consideration when comparison-shopping.

· Never try to load a backhoe on a trailer with a 2 5/16" ball hitch connected to a truck with a 2" ball. It just doesn't work.

· Never use a highly volatile ester formulation when applying lawn weed control in the vicinity of prize roses. Some roses are very expensive.

· Never use a nonselective granular herbicide where it has the potential to translocate into desirable turf when it rains. It can take over a year for the grass to grow back.

· If a rag is used to protect the exhaust manifold of a vehicle when adding engine oil, remove the rag before operating the vehicle. Or, use a nonflammable material to protect the manifold.

· Always fill fertilizer spreaders in an area away from the turf being fertilized. Preferably on a permeable surface such as a gravel parking area. Spills are unsightly and embarrassing.

Although looking back on these errors in judgment does bring a chuckle, some could have had much more devastating consequences and none were very amusing at the time. If any of you have words of wisdom you would like to share with our readers, you can email them to me at jimtc@att.net or fax them to (908) 730-7770. They could be serious words of caution based on an honest mistake or they could be less serious in nature and just bring a chuckle upon recollection. Your name is not required and all communications will remain confidential. ♦

NEWS RELEASE * NEWS RELEASE

KIM HECK SELECTED AS STMA EXECUTIVE DIRECTOR

The Board of Directors of the Sports Turf Managers Association (STMA) has selected Kim Heck as Executive Director. Heck becomes the association's first full time dedicated Executive Director in its 23-year history. STMA has been managed by Trusty & Associates since 1996.

STMA president Bob Campbell says, "STMA's long standing vision has always been to have its own Executive Director and staff. That time is now, and our board feels that Kim can help lead us to the next level of growth for our membership and visibility for our profession."

Heck comes to STMA from the Golf Course Superintendents Association of America (GCSAA) where she spent the past 10 years directing key programs and services for the 20,000-member organization. Under her leadership an entire functional area was created to help members attain career success. She was an integral member of the GCSAA management team and has worked with many member committees to advance initiatives. Prior to joining GCSAA, Heck worked in marketing and advertising. She holds a B.S. in Journalism from the University of



Count on it.

*Toro Irrigation
Athletic Field Specialists*

For sales and design assistance, contact:
Storr Tractor Co. **Phila. Turf Co.**
Mike Pastori **Rich Toleno**
908-722-9830 **267-266-0389**

Kansas and resides in Lawrence, Kan., where she volunteers on several community boards and advisory groups.

"I am excited to be given the opportunity to work with STMA's strong, visionary board and committed volunteers. I truly believe that STMA is poised for greater growth and influence in the sports and turf industries. My goals are to strengthen membership by providing highly valued services and to continue to advance recognition for the profession," Heck says.

Heck begins her position Sept. 1 at the new STMA headquarters, which will be located in Lawrence, Kan.

STMA is the professional association for sports turf managers from around the world. Members keep abreast of the latest research and technology and apply their knowledge and expertise to provide the highest quality playing fields for athletes. For more information on STMA, consult its website at:

www.sportsturfmanager.com. ♦



Turf Specialties Thatch Master VertiCut



Lesco Ride On Self-Propelled Spread Sprayer




Moyer & Son, Plant Nutrients
Offers professional sport turf care products.
 M.O.S.T. organic fertilizers
 Moyer Green Gro granular sport turf fertilizers
 Fertigation & Turflo® Liquid Fertilizers
 Exclusive grass seed & erosion control products
 Soil amendments
 Clay drying materials

For Further Information Call 888-408-5433


Quality. Durability. Reliability.

The only turf tough enough for Superbowl XXXVII and Superbowl XXXVIII

Pennington Seed, Inc. is extremely proud to be selected for a second consecutive season to provide the all important field for the Super Bowl



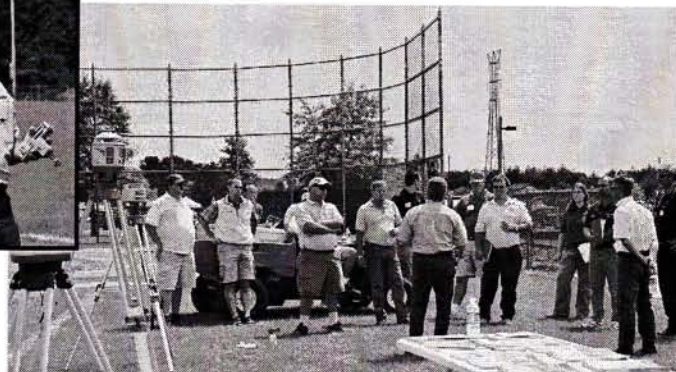
CONTACT
MARK HARDEK
 215-990-9081 (Cell)



PENNINGTON

WORLD'S LARGEST MARKETER AND PRODUCER OF SEED

Specializing in Turf Seed, Reclamation Grasses, Forage and Wildlife Products.



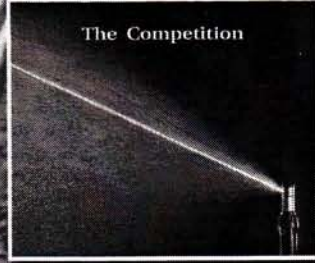
Keith Jones, Keystone Precision Instruments, Laser Grading Class



Red Sky Assoc. Planet Air Aerator



Install Confidence.



**Install Rain Curtain
Nozzle Technology.**

Only Rain Bird rotors feature Rain Curtain™ Nozzle Technology that delivers uniform water distribution across the entire radius range for green grass results. Gentle, effective close-in watering around the rotor eliminates dry spots without seed washout, and larger water droplets assure consistent coverage, even in the windiest conditions.

Install Confidence. Install Rain Bird.

RAIN BIRD®

**D
V
H**



Athletic Turf
"Building Turf is our Game"

Phone: 800-942-0134
856-429-9796

Fax: 856-427-9684

Email: mripa@thedvhgroup.com
626 Park Road

Cherry Hill, New Jersey
08034

www.thedvhgroup.com

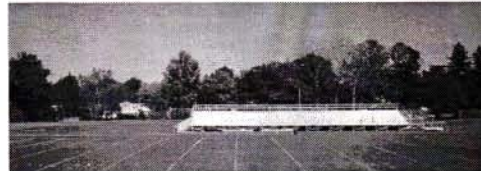
Division Manager, Joe Warner:
Joe Warner came to DVH in 2000 after 20 years of running his own business, bringing with him a level of expertise which has enabled our company to provide affordable solutions to athletic fields.

Email: jwarner@thedvhgroup.com

Renovation & Construction Services:

Design/layout, top-soiling, soil amendments, Laser-guided grading...in-field mix, sod/ seed, pitcher's mound & batter's box construction.

Supplies: *In-field conditioners, drying agents, mound/batter's clay, bricks & marking lime.*



Turf Management Services:

Division Manager, Greg Winfree:
Greg's hands-on approach to Athletic Turf Management solutions is providing our customers with a level of comfort knowing their athletes will get the best turf possible.
Email: gwinfree@thedvhgroup.com

Complete fertilization programs, top-dressing, deep-tine core aeration, slice-seeding, grub & disease control.

"JUST ADD WATER..."

Like part of any good recipe, the proper amount of water at the right time will enhance and protect your turf.

Don't let an automatic underground sprinkler system be your facility's missing ingredient.



DESIGN

INSTALLATION

MAINTENANCE

SPRING IRRIGATION CO., INC
P.O. BOX 523
DAYTON, NJ 08810
NJ IRRIGATION LICENSE # 15040
IA CERTIFIED DESIGNER # 180186

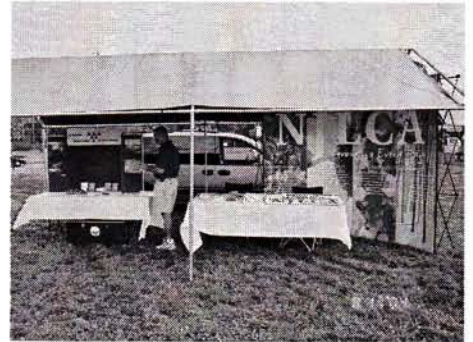
(732) 821-5767
FAX (732) 821-0130
springirr@netzero.com



John Deere TurboWide Area Mower



MDS Millcreek Turf Tiger Topdresser



NJLCA and NJIA Booths



NJRPA Bill Foelsch Playground Safety Class

NATIONAL SEED PROFESSIONAL TURF PRODUCTS

Specializing in Quality
Grass Seed To Meet All Your
Turf Performance Standards

Call For a Catalog

800-828-5856

Carrying a full line of quality mixtures
especially formulated for:

SPORTS & ATHLETIC FIELDS

LOW MAINTENANCE AREAS

GENERAL GROUNDS

GOLF, LAWN, RECLAMATION

**Technical Agronomic Support and
Custom Blending Available**



John Deere Booth



MDS Earth & Turf Topdresser

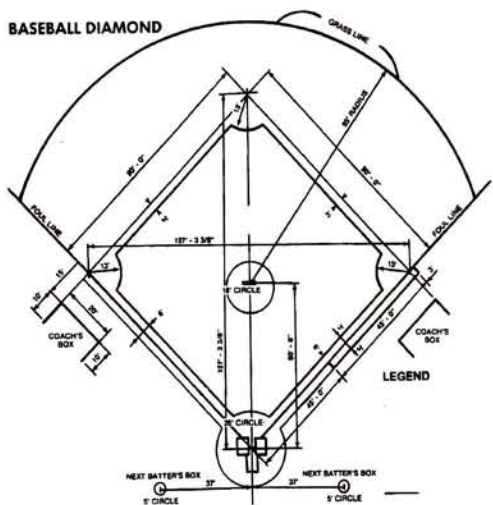


John Deere's Jim Cunningham loader backhoe



Lesco's Jim Gavigan unloading equipment

BASEBALL DIAMOND



Terre Has a full line of Sports Turf Products

- Infield Clay Mixes
- Turface soil conditioners
- Grass Seed
- Fertilizers
- Pesticides
- Top Dressing
- Goose Control
- Turf Blankets
- Marking Paints



Keep Your Ball field's safe and looking great!! TERRE has the products from grass seed and fertilizer to infield clays and Sports Field Conditioners like Turface products

Call For a Catalog or Inquiries

Tel: 973-473-3393

Fax: 973-473-4402

206 Delawanna Ave Clifton NJ 07014

The TERRE Co.