

# SFMANJ District 4 Synthetic Infill Maintenance Day Photo Recap September 19, 2007 - Recchino Field Complex, Haddon Township, NJ



Not exactly seamless. District 4 Meeting attendees observe a large, not-easily-repairable seam in the playing surface of this synthetic infill system.



Significant fiber deterioration was evident directly in-front of the girls' softball pitching rubber.

(More photos on page 18)



**Fisher & Son**  
COMPANY, INC.

**Randy Rider**  
302-242-6848

**Mike Oleykowski**  
609-410-0709

*The "Green Industry" Supplier*



*BASF*

*Boyer*

*EarthWorks*

*Grigg Brothers*

*Lebanon Fertilizers*

*Plant Health Care*

*Prokaz*

*Syngenta*

Superior Products for the Turf & Horticultural Professional!  
110 Summit Drive \* Exton, Pennsylvania 19341 \* 610-363-5225 \* fax 610-363-0563 [www.fisherandson.com](http://www.fisherandson.com)

## Dual Slope Laser Grading



- Automated dual slope
- Accurate to .125" (1/8")
- 1 day service available
- Complete athletic field construction
- Bonded and insured
- Local references

Georgia Golf Construction, Inc.  
1441 Route 50  
Woodhine, NJ 08270  
Tel (609)-628-2597 or (404)216-4445  
Fax (609)-628-3087  
[www.georgiagolfconstruction.com](http://www.georgiagolfconstruction.com)

Increase your field's drainage and playability.

## DID YOU KNOW?

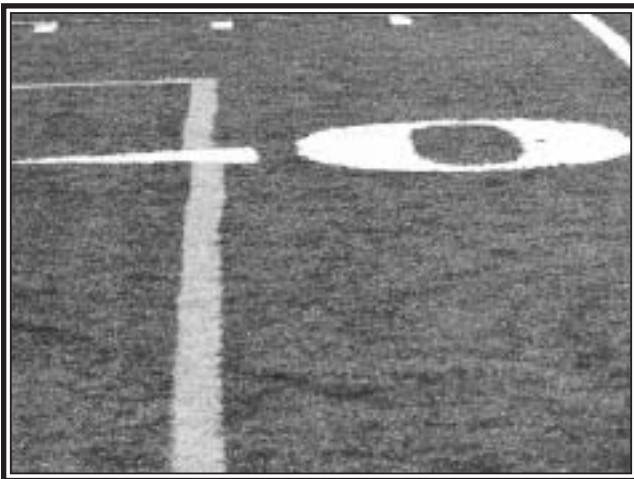
**A *stolon* is an elongated stem (or shoot) that grows along the surface of the ground and from which leaves and adventitious roots develop at the nodes.**

## SFMANJ District 4

### Synthetic Infill Maintenance Day Photo Recap

September 19, 2007 - Recchino Field Complex, Haddon Township, NJ

(more photos continued from page 17)



Crooked permanently in-laid lines could be found at various locations throughout this synthetic infill field.



A multitude of permanently in-laid lines designating the playing areas for several sports, painted lines, and use of skin infield-colored carpet for a softball field all in one area creates a visually confusing surface.

**EVERGREEN™ Turf Blankets...  
...trusted around the world!**

**“Results Outstanding...,  
Could Not Believe...”**

wrote **Dann Daly**, Park Maintenance Supervisor,  
**Parks & Recr. Dept.**, North Smithfield, RI

- Earlier spring green-up
- Faster seed germination
- Deeper root development
- Delays dormancy in fall
- Ideal winter blanket
- 3 & 7 yr. warranty covers
- Best for quick turf repairs
- Available in any size

Want to know more?  
**CALL TOLL FREE  
1-800-387-5808**

**COVERMASTER™  
COVERMASTER  
COVERMASTER**

MASTERS IN THE ART OF SPORTS SURFACE COVERS

COVERMASTER INC., 100 WESTMORE DR. 11-D, REXDALE, ON, M9V 5C3 TEL 416-745-1811 FAX 416-742-8837



Covers for football and soccer fields are also readily available.



Covered... Uncovered...

EXCESS HEAT ESCAPES THROUGH THE PATENTED VENTING SYSTEM

AIR, WATER AND HEAT PENETRATE THE COVER, WARMING THE SOIL

INCREASES ROOT DEVELOPMENT

It works on the greenhouse principle, every time!

**covermaster.com**

E-MAIL: [info@covermaster.com](mailto:info@covermaster.com)

