

## Words of Wisdom

By Jim Hermann, CSFM

Once there was a young bull and an old bull grazing up on the hill in the meadow. The young bull says to the old bull "come on, lets run down the hill, break down the fence and talk to one of those pretty little heifers in the next pasture" the old bull looks over at the young bull and says "how about if we walk down the hill, go through the gate and talk to *all* those pretty little heifers"? The young bull had knowledge. The old bull had experience and wisdom.

As sports field managers, we strive to acquire knowledge in our specific field of endeavor. We go to classes, field days, read books, articles etc. Wisdom is acquired when we begin to apply the knowledge we have gained. Wisdom could be considered a deeper understanding acquired through experience as it applies to our specific circumstances. It was once said, "knowledge is organized science, wisdom is organized life".

Ironically, we tend to gain more wisdom from our mistakes than from our successes. What doesn't work is sometimes more meaningful than what does. With this premise in mind, I would like to provide you with words of wisdom. Obviously, these mistakes were the product of others and I was merely an observer. "No bull"

· When calibrating a pendulum type fertilizer spreader don't forget to divide the rate needed by 2 to compensate for the overlap. Or, "sharpen your mower blades".

· Don't fertilize with a nitrogen source that relies on microbial action for release in the late fall and follow up with water-soluble nitrogen in spring unless you take that application into consideration. Can you say "double whammy"

· Don't use a compression fitting to repair a 3" main line irrigation leak in the vicinity of an above ground elbow. You would be astonished at how high in the air that fitting can fly when 80 pounds of air pressure causes failure of the connection to occur during system winterization. Someone told me, it sounds like a bomb going off.

· Be sure to tie down equipment on your trailer when transporting from

site to site. Bounce is not a consideration when comparison-shopping.

· Never try to load a backhoe on a trailer with a 2 5/16" ball hitch connected to a truck with a 2" ball. It just doesn't work.

· Never use a highly volatile ester formulation when applying lawn weed control in the vicinity of prize roses. Some roses are very expensive.

· Never use a nonselective granular herbicide where it has the potential to translocate into desirable turf when it rains. It can take over a year for the grass to grow back.

· If a rag is used to protect the exhaust manifold of a vehicle when adding engine oil, remove the rag before operating the vehicle. Or, use a nonflammable material to protect the manifold.

· Always fill fertilizer spreaders in an area away from the turf being fertilized. Preferably on a permeable surface such as a gravel parking area. Spills are unsightly and embarrassing.

Although looking back on these errors in judgment does bring a chuckle, some could have had much more devastating consequences and none were very amusing at the time. If any of you have words of wisdom you would like to share with our readers, you can email them to me at jimtc@att.net or fax them to (908) 730-7770. They could be serious words of caution based on an honest mistake or they could be less serious in nature and just bring a chuckle upon recollection. Your name is not required and all communications will remain confidential. ♦

## NEWS RELEASE \* NEWS RELEASE

### KIM HECK SELECTED AS STMA EXECUTIVE DIRECTOR

The Board of Directors of the Sports Turf Managers Association (STMA) has selected Kim Heck as Executive Director. Heck becomes the association's first full time dedicated Executive Director in its 23-year history. STMA has been managed by Trusty & Associates since 1996.

STMA president Bob Campbell says, "STMA's long standing vision has always been to have its own Executive Director and staff. That time is now, and our board feels that Kim can help lead us to the next level of growth for our membership and visibility for our profession."

Heck comes to STMA from the Golf Course Superintendents Association of America (GCSAA) where she spent the past 10 years directing key programs and services for the 20,000-member organization. Under her leadership an entire functional area was created to help members attain career success. She was an integral member of the GCSAA management team and has worked with many member committees to advance initiatives. Prior to joining GCSAA, Heck worked in marketing and advertising. She holds a B.S. in Journalism from the University of



Count on it.

*Toro Irrigation  
Athletic Field Specialists*

*For sales and design assistance, contact:*  
**Storr Tractor Co.**                      **Phila. Turf Co.**  
**Mike Pastori**                              **Rich Toleno**  
**908-722-9830**                              **267-266-0389**

Kansas and resides in Lawrence, Kan., where she volunteers on several community boards and advisory groups.

"I am excited to be given the opportunity to work with STMA's strong, visionary board and committed volunteers. I truly believe that STMA is poised for greater growth and influence in the sports and turf industries. My goals are to strengthen membership by providing highly valued services and to continue to advance recognition for the profession," Heck says.

Heck begins her position Sept. 1 at the new STMA headquarters, which will be located in Lawrence, Kan.

STMA is the professional association for sports turf managers from around the world. Members keep abreast of the latest research and technology and apply their knowledge and expertise to provide the highest quality playing fields for athletes. For more information on STMA, consult its website at:

[www.sportsturfmanager.com](http://www.sportsturfmanager.com). ♦



*Turf Specialties Thatch Master VertiCut*



*Lesco Ride On Self-Propelled Spread Sprayer*




**Moyer & Son, Plant Nutrients**  
**Offers professional sport turf care products.**  
 M.O.S.T. organic fertilizers  
 Moyer Green Gro granular sport turf fertilizers  
 Fertigation & Turflo® Liquid Fertilizers  
 Exclusive grass seed & erosion control products  
 Soil amendments  
 Clay drying materials

**For Further Information Call 888-408-5433**


**Quality. Durability. Reliability.**

**The only turf tough enough for Superbowl XXXVII and Superbowl XXXVIII**

Pennington Seed, Inc. is extremely proud to be selected for a second consecutive season to provide the all important field for the Super Bowl



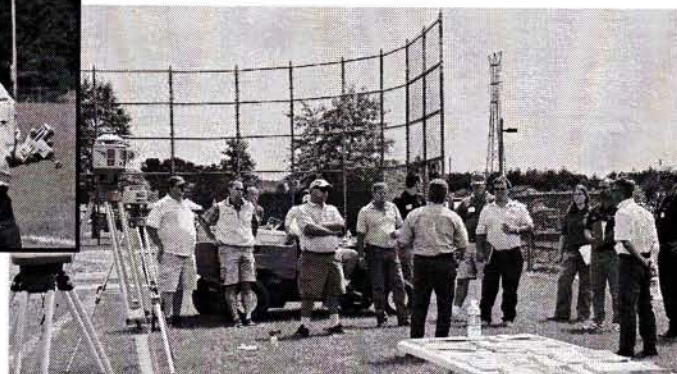
CONTACT  
**MARK HARDEK**  
 215-990-9081 (Cell)



**PENNINGTON**

**WORLD'S LARGEST MARKETER AND PRODUCER OF SEED**

Specializing in Turf Seed, Reclamation Grasses, Forage and Wildlife Products.



*Keith Jones, Keystone Precision Instruments, Laser Grading Class*



*Red Sky Assoc. Planet Air Aerator*

## "JUST ADD WATER..."

Like part of any good recipe, the proper amount of water at the right time will enhance and protect your turf.

Don't let an automatic underground sprinkler system be your facility's missing ingredient.



DESIGN

INSTALLATION

MAINTENANCE

SPRING IRRIGATION CO., INC  
P.O. BOX 523  
DAYTON, NJ 08810  
NJ IRRIGATION LICENSE # 15040  
IA CERTIFIED DESIGNER # 180186

(732) 821-5767  
FAX (732) 821-0130  
springirr@netzero.com



*John Deere TurboWide Area Mower*



*MDS Millcreek Turf Tiger Topdresser*



*NJLCA and NJIA Booths*



*NJRPA Bill Foelsch Playground Safety Class*

## NATIONAL SEED PROFESSIONAL TURF PRODUCTS

Specializing in Quality  
Grass Seed To Meet All Your  
Turf Performance Standards

Call For a Catalog

**800-828-5856**

Carrying a full line of quality mixtures  
especially formulated for:

**SPORTS & ATHLETIC FIELDS**

LOW MAINTENANCE AREAS

GENERAL GROUNDS

GOLF, LAWN, RECLAMATION

**Technical Agronomic Support and  
Custom Blending Available**



John Deere Booth



MDS Earth & Turf Topdresser

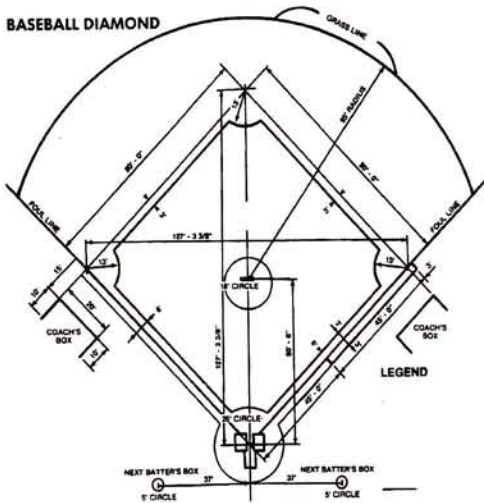


John Deere's Jim Cunningham loader backhoe



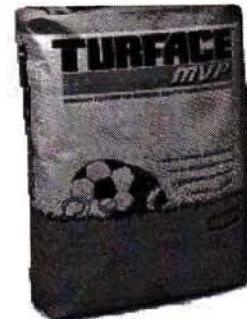
Lesco's Jim Gavigan unloading equipment

BASEBALL DIAMOND



**Terre Has a full line of Sports Turf Products**

- Infield Clay Mixes
- Turface soil conditioners
- Grass Seed
- Fertilizers
- Pesticides
- Top Dressing
- Goose Control
- Turf Blankets
- Marking Paints



Keep Your Ball field's safe and looking great!! TERRE has the products from grass seed and fertilizer to infield clays and Sports Field Conditioners like Turface products

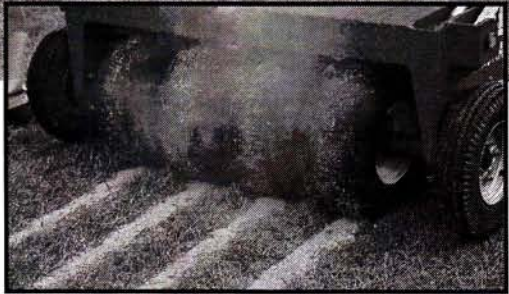
**Call For a Catalog or Inquiries**

**Tel: 973-473-3393**

**Fax: 973-473-4402**

**206 Delawanna Ave Clifton NJ 07014**

**The TERRE Co.**



*Aer-Core Blec Sandmaster Slice & Fill*



*Bill Wise - Irrigation Class - Rainbird*



*Central Irrigation - Jerry Catoggio and Assistant*



*Dean Marzocca, SFMANJ treasurer, announcing the day's schedule*



*E & M Golf Supply WaterWick*



*Gregson Clark spraying Equip Hylander Self-Propelled Turf Applicator*