

# PRESIDENT'S MESSAGE



AL SCHLOTHAUER, CGCS

Many thanks to Rick Hansen and Mountain Shadows Golf Course for hosting our 1987 Annual Meeting. A super job Rick for only being there a couple of weeks. Thanks again.

A mere 31 voters and 10 proxys were at the Annual meeting, not what I would call an outstanding turnout considering there are about 145 eligible voting members. Participation is a main factor in having a successful organization. The Association is for you!

Many thanks to Ken Sakai, Sam Singh, and Mike Ginelli for their contributions to the Board of Directors this past year.

Congratulations to the newly elected Officers and Directors for the coming year. It is an energetic and ambitious group with whom I look forward to working with in the coming year. Also, congratulations to the Award winners for 1986: Superintendent of the Year - Paul Dias, CGCS; Excellence in Turfgrass - Corey Eastwood, CGCS; and Class F Member - Bob Pedersen.

Vice-President: Paul Dias, CGCS

Secretary/Treasurer: Pete Bibber

Directors: Rod Kilcoyne, CGCS

Directors: Bob Dauterman

Joe Rodriguez, CGCS

Corey Eastwood, CGCS

Committee Assignments for 1987:

MEMBERSHIP: Bob Dauterman

GOLF: Rod Kilcoyne and Corey Eastwood

BY-LAWS: Paul Dias, Rod Kilcoyne, Corey Eastwood

STATE: Paul Dias, Jim Ross

NATIONAL: Ken Sakai, Cliff Wagoner

PROGRAM: Joe Rodriguez, Bob Dauterman

EDUCATION: Paul Dias, Corey Eastwood, Cliff Wagoner, Cliff Rourke

NEWSLETTER: Al Schlothauer, Bob Cox

\* Congratulations to George Santana and Suzie Eastwood for winning their respective flights at the GCSAA National Tournament in Tuscon. Nice Going!

I look forward to serving as President for 87-88, and to an increased participation from the membership. Many thanks!

\* Congratulations on 25 year pins to Joe Andrade, Isarel Ball, Bernie Hanson, and Henry Singh.

- by Don Naumann

ROSS BROWNLIE is officially the new Superintendent at Sharon Heights CC in Menlo Park. Ross was the Assistant under the now "Turf Consultant" Roy King.

SAM SINGH has been transferred from Mountain Shadows GC in Rohnert Park to be a regional Superintendent in St. Louis, Missouri for American Golf. Replacing him is RICK HANSEN who was most recently the Superintendent at Merced CC in Merced.

MURRY NONHOFF has left Scotts Proturf to become the Superintendent at Marino Valley Ranch in Riverside, CA. Marino Valley Ranch is a 27 hole planned golf community, developed by Landmark.

MIKE SAULS has accepted the Superintendent position at Spyglass Hill GC in Pebble Beach. Mike was the Superintendent in charge of the Championship GC at Medina Golf Club in Illinois.

CONGRATULATIONS to Mike Garvale of Palo Alto Hills Country Club and Paul Dias of Palo Alto Municipal Golf Course for achieving their Certification through the Golf Course Superintendents Association of America!

— MEETINGS —

JUNE 5 - San Francisco GC, San Francisco

JULY 22 - Silverado Resort & CC, Napa (Annual Supt./Pro Tourn.)

AUGUST 12 - Tilden Park, Berkeley

SEPTEMBER - Open (If you would like a meeting please contact Program  
Chairman - Joe Rodriguez)

OCTOBER - Turlock GC, Turlock (Joint Meeting with Central)

OCTOBER 21-22- "Golf Course Design Principles" (GCSAA Regional Seminar at Castlewood CC)

NOVEMBER - Sharon Heights, Menlo Park

DECEMBER 4 - Rancho Canada, Carmel (Annual Christmas Party)

## HOST SUPERINTENDENT

JOSEPH RODRIGUEZ, CGCS, started his horticultural career in Antioch, CA in 1959. In 1969, he went to work for Contra Costa County in the Landscape Division. He progressed to the Chief Gardener position, where he was in charge of all landscaped and turf areas within the County's jurisdiction. While with Contra Costa County, Joe graduated from Diablo Valley College with a degree in Ornamental Horticulture. He also attended Los Medanos College for two years, and possesses a State Contractor's License for landscaping.

In 1986, Joe graduated from Saint Mary's College with a Bachelor's Degree in Management. He has been the Superintendent at the Rossmoor Golf Courses since 1978.

### *Golden Rain Foundation*

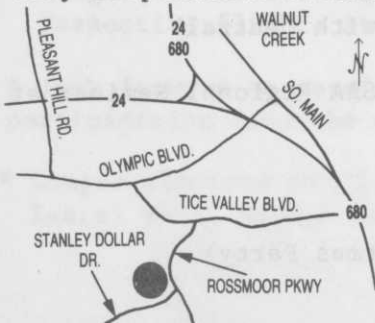
**Rossmoor**  
WALNUT CREEK

ROSSMOOR is a planned adult community that was first opened in 1964. Presently there is a population of approximately 8,500 residents, whose age average 75.5 years. The community has many advantages, among them is a medical clinic and the Rossmoor security force.

The maintenance and management of the Rossmoor community is administered by the Golden Rain Foundation.

The Rossmoor Golf Courses consist of the 18-hole South Course, and the 9-hole North Course, and are private courses. In 1975, a new 9 holes was designed by Robert Muir Graves, and put into play. The new 9 was worked into the old 9 for 18 holes. So, we have a combination of new and old on the South, and the North is the original front 9.

The South Course is rated at 67.3 from the white tees, and the course length is 5,765 yards. The cart paths extend from tee to green, and carts are restricted to the paths. There is also no rough. This is to facilitate play because of the age factor. We mow approximately 175 acres of fairway twice weekly. In the past two years, we have averaged 88,000 rounds of play per year. The Golf Pro at Rossmoor is Norm Oliver, with whom we have a very cooperative working relationship.



Written Directions on following page!

Rossmoor (cont.) From the South - 680 North to South Main St. off ramp. South Main to Newell Avenue. Left on Newell to Olympic Blvd. Left on Olympic to Tice Valley Blvd. Left on Tice Valley to Rossmoor.  
From the North - 680 South to Newell Ave exit. Right on Newell Ave. to Olympic Blvd. Left on Olympic Blvd. to Tice Valley Blvd. Left on Tice Valley to Rossmoor.  
From the West - Highway 24 to Pleasant Hill Rd. exit. Right on Pleasant Hill Road to Olympic Blvd. Left on Olympic Blvd. to Tice Valley Blvd. Right on Tice Valley to Rossmoor.

=====

#### USGA NEWS/GCSAA GOLD CARDS

"Members of the GCSAA--Those members who will identify themselves by a gold GCSAA membership card for the current year are to be granted complimentary admission to the grounds and clubhouse on a day-to-day basis. Spouses of such members will be granted the same complimentary admission when accompanied by the card-carrying member. Note: Those GCSAA members identifying themselves by a green membership card are NOT to be admitted on a complimentary basis."

"Will Call", where GCSAA gold card holders will present themselves, will be located where John Daly Blvd. deadends at Shoreline Blvd., right on the ocean.

\* This information was supplied by Ron Read of the USGA.

=====

— **FOR SALE** —      3 22" Jacobsen Greensmowers. Excellent condition.  
\$1,000 apiece or Best offer. Contact Chuck Pratt - 415 588-9021 xt 28.

=====

#### — **IN MEMORIAM** —

For this past year 1986 - 1987.

Ed Berardy - Vern Conklin - John DaDalt - William Martindale

# GCSANC-ANNUAL MEETING

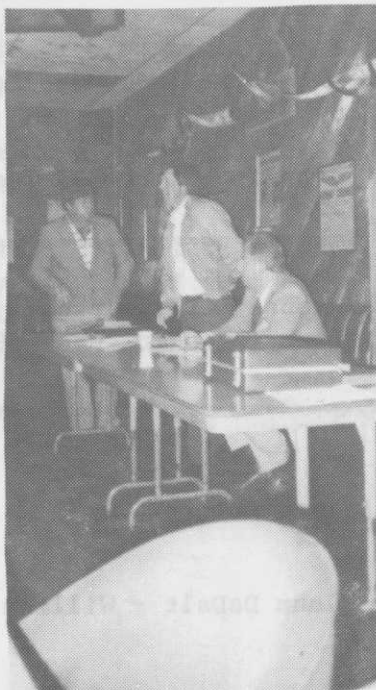
## BOARD of DIRECTORS for 1987



L to R. Corey Eastwood, CGCS; Al Schlothauer, CGCS; Paul Dias, CGCS; Joe Rodriguez, CGCS; Bob Dauterman, CGCS; Rod Kilcoyne, CGCS; Pete Bibber, Stan Burgess, CGCS.



Roll Call!



Committee Reports - Rod!



Election Chairman-  
Ernie Martin

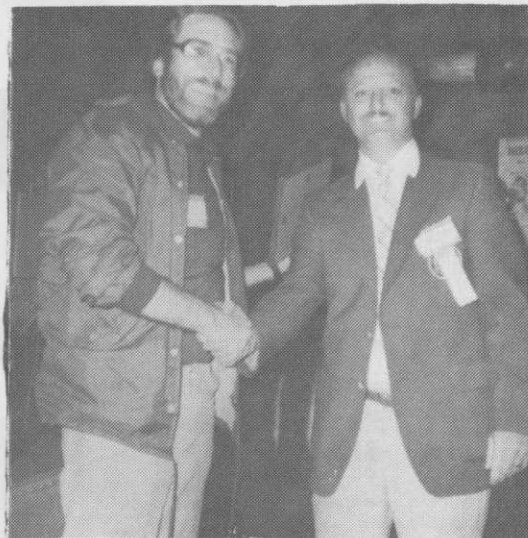




Passing the Gavel - Stan to Al



Joe Andrade - 25 year pin!



Special Award to Stan for his year of service as President! Special Awards of Merit for service on the Board of Directors to Ken Sakai and Mike Ginelli. Sam Singh not pictured.

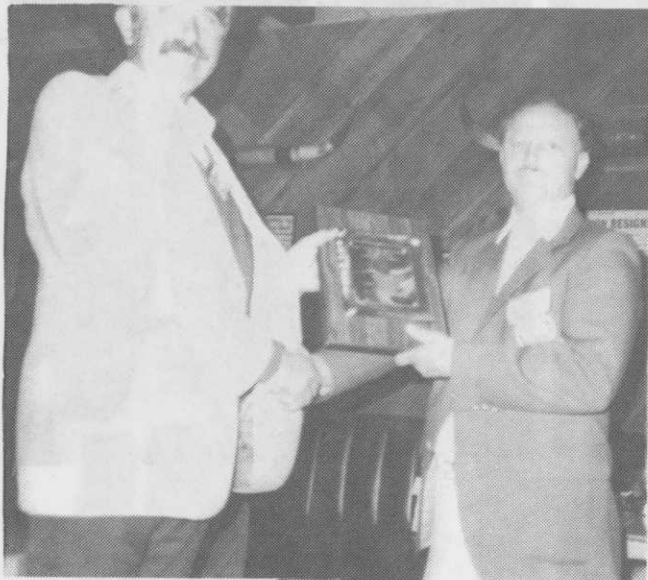
## Annual Awards:



SUPERINTENDENT of the YEAR -  
PAUL DIAS, CGCS



CLASS F of the YEAR -  
BOB PEDERSEN



TURFGRASS EXCELLENCE -

COREY EASTWOOD, CGCS

\* It looks like Corey lost his head over the award. Sorry for the photo.

Congratulations to all the winners.

# Golf Course Superintendents Association



## OF NORTHERN CALIFORNIA

GOLF COURSE SUPERINTENDENTS ASSOCIATION OF NORTHERN CALIFORNIA  
FEBRUARY 1, 1986 TO JANUARY 31, 1987

### STATEMENT OF CASH RECEIPTS, EXPENSES, AND BALANCES

Cash Balance February 1, 1986

9,978.37

#### Income

Interest	639.55
Dues	16,654.50
Meeting	18,385.86
Newsletter	2,040.00
Donations	1,370.00
Miscellaneous	450.00

----- 39,540.00

#### Expense

Newsletter	3,196.80
Office	12,354.29
Meeting	19,919.83
Research/Scholarship	3,760.00
Miscellaneous	202.50

----- 39,433.42  
10,085.36

### STATEMENT OF ASSETS & LIABILITIES - JANUARY 31, 1987

#### ASSETS

Cash in checking account	10,085.36
Cash in checking savings	2,000.00
Cash in savings	9,917.04
Certificate	12,542.05
Petty Cash	50.00

----- 34,594.45



## THE ASSOCIATIONS CODE OF ETHICS

In the end that honor and respect may be enjoyed by all the Golf Course Superintendents the strict observance of the Code of Ethics is expected. A member shall be deemed to have violated the code by:

1. Acting and speaking in a manner which would cause discredit to our profession and association.
2. Abusing the privilege of playing golf at any members clubs by bringing uninvited guests or failing to make his presence known to the home superintendent when visiting a club.
3. Applying for a position without the definite knowledge of its vacancy.
4. Expressing opinions to, or visiting with, Golf Club officials or members in regard to maintenance practices without the express permission and knowledge of the Superintendent of the club in question whether a member of this Association or not.

