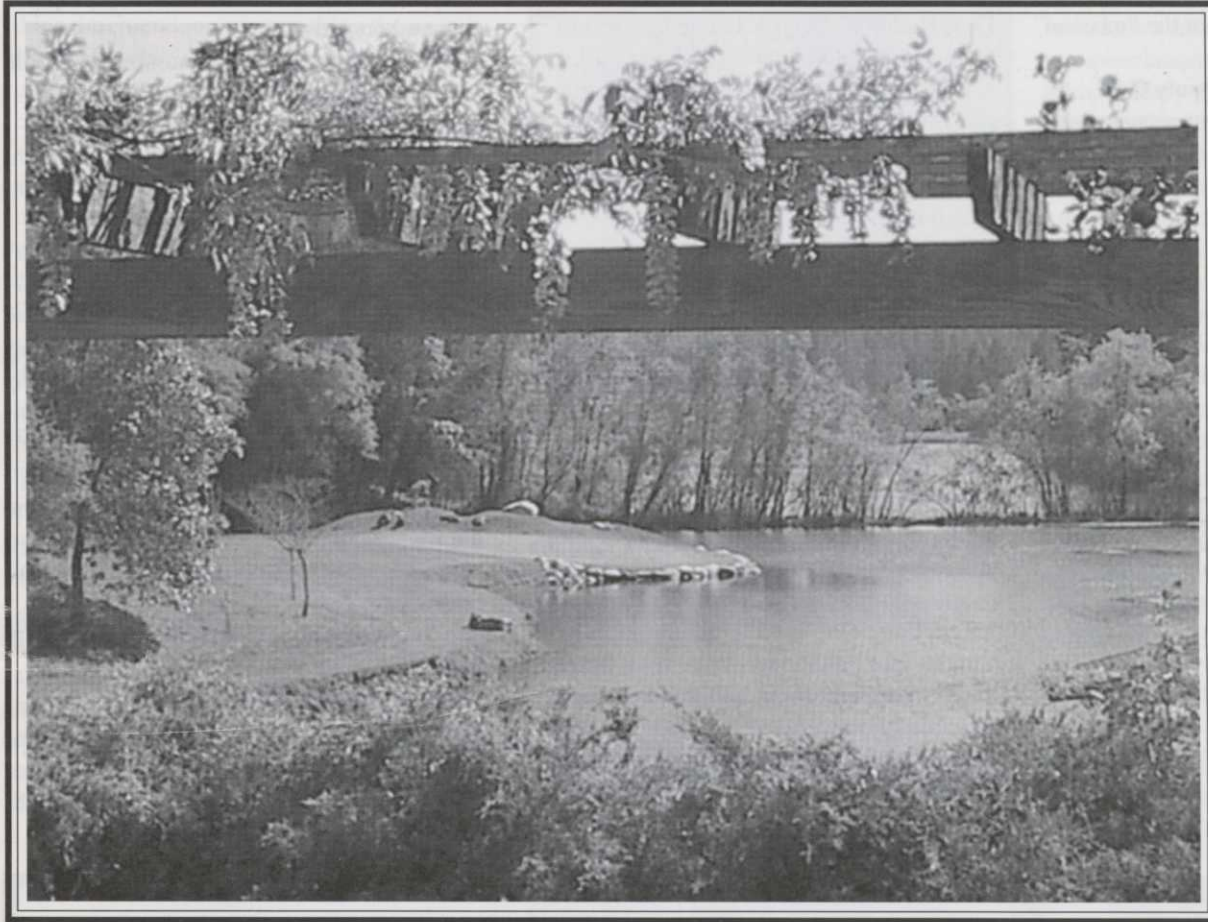




*The Golf Course Superintendents Association of Northern California*

## A Beautiful Par 3 at the Robertson Golf Links



*Sonoma County Golf Course Employee Tournament Played at the Robertson Golf Links — see article by Gary Skolnik on page 2*

### In This Issue . . . . .

Summer Golf, Fun and Beer . . . . .	2
President's Message . . . . .	3
Clopyralid and Compost . . . . .	4
Voluntary Cancellation of NemaCur . . . . .	5
Slow Start for Bermuda Grass . . . . .	5
Lights, Camera, Action . . . . .	6
The Value of History . . . . .	6
Naumann's NorCal News . . . . .	7
Field Workshop — Picture Review . . . . .	7,8,9
Office Notes . . . . .	10
Membership Report . . . . .	10

### Special Interest

Make Your Reservations Early For

Superintendent  
Pro  
Tournament

June 17, 2002  
**Mayacama Golf Club**



**All members are invited to play!**