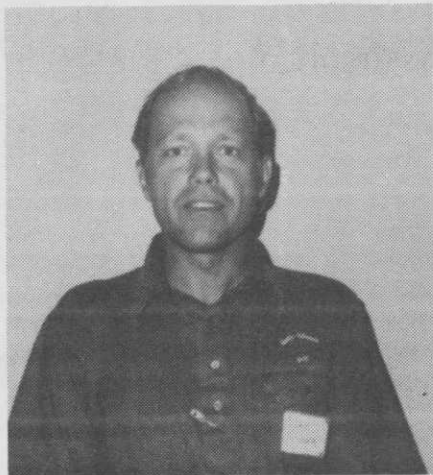


# PRESIDENT'S MESSAGE



MICHAEL R. CLARK, CGCS

I have asked our new program chairman, Steve Carlton, to make every effort to have our monthly meeting "the second week of each month" in accord with our present bylaws. This may make it more difficult for some clubs to host our meetings, but I hope it is not a major problem. By having the meeting the same week each month, you should find it easier to make your long range plans to attend. Better attendance should mean more effective meetings.

Our recent survey has had a very poor response from the membership. Either everyone is completely happy or a certain amount of apathy

has set in. The board will continue to do its best in running the Association. If you want something other than what you are getting, it's time to come to a board meeting and speak up.

\*\*\*\*\*

## Y O U R   H O S T   S U P E R I N T E N D E N T

JOHN LLOYD started golf course work at the Alameda Municipal Golf Course in 1957 as a laborer under William Souza and worked as night waterman for 2 years. Worked there for 22 years and proceeded to work his way up to Foreman. In the meantime, attended many seminars and Chabot College and took many classes in horticulture. Quit Alameda Golf Course and became Superintendent at the San Leandro Golf Course in 1979. John and his wife and family live in Union City, California.

The City of San Leandro in June 1963 opened the Marina Golf Course, a nine hole par 29 executive course. The course and the adjacent boat marina were financed through funds from the State of California Green Belt appropriations.

Initial planning called for construction of an additional eighteen hole regulation golf course within five years. However, because of the City's pay-as-you-go policy, construction was deferred until the landfill program's completion. Subsequently, another temporary nine holes were added to the Marina course, which created a 59 par course. The second nine holes were built on five of the permanent Tony Lema Course holes and opened in 1971.

Finally, exactly 20 years after the Marina Course was opened, the Tony Lema Par 71 Course was dedicated and opened for play on June 6, 1983.

The course was 100% financed from funds set aside by the City over the years and is totally paid for.

Improvements over the years include a fully lighted driving range, additional tree plantings, drains and beautification of the entire Marina complex.

Future planning calls for the construction of a full-sized restaurant and bar to replace the present small sandwich shop.

The courses are host to three ladies clubs and the mens club. The mens club boasts a membership of 450 members and sponsors the Junior Tournament every year, with participation from the womens clubs.

The Tony Lema Course, because of the prevailing winds, is a real challenge to the skilled or average player. The greens are large and in most cases elevated. Pin placement can change the approach shot club selection by one or two clubs, depending on skill level.

The maintenance crew, led by John Lloyd, is dedicated to providing the finest facility possible under the shadow of a young, immature course. They are successful!

\*\*\*\*\*

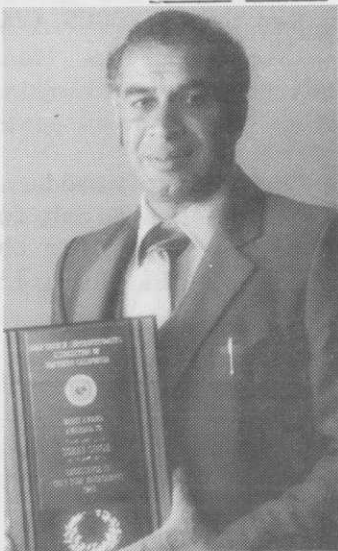
S P E A K E R The speaker for June is Dr. Pete Zidnak famous Rules of Golf expert. Dr. Zidnak was a Professor of Business at San Jose State University and is one of only two people to become an Honorary member of the Northern California Section of the PGA. He loves the game of golf and has studied the Rules of Golf for many years. He speaks often to business groups, at PGA business schools, and at rules seminars. His topic is "The Superintendent and the Rules of Golf" and he will relate how the rules affect the superintendent and how the superintendent affects the way the golf course plays.

\*\*\*\*\*

Myrtle goofed ☹️  
Identified Correctly is the

Turfgrass Excellence

AWARDEE SOHAN SINGH



NORTHERN CALIFORNIA GOLF ASS'N P. O. Box NCGA Pebble Beach 93953
J. R. SIMPLOT COMPANY P. O. Box 198 Lathrop 95350
P. E. O'HAIR & COMPANY 1333 Old Oakland Road Sar Jose 95112
PLANT GRO CORPORATION P. O. Box 703 San Jose 95106
RAIN BIRD - Phil Vangene 6380 Benner Ct Pleasanton 94566
REYNOLDS SALES - Steam Cleaners 1066 Polk Street Salinas 93906