

Turf Grass TRENDS



[Vol 13]
Volume 4, Issue 8

August 1994

IN THIS ISSUE

IN-DEPTH ARTICLES

Predicting grub damage
in turf 1
By Dr. Michael Villani

Integrated pest management
is the future 6
By Christopher Sann

INTERACTIONS

The disease triangle & the
disease cycle 8
By Dr. Eric B. Nelson

Making the best of our
opportunities 10
By Christopher Sann

Is Pythium really a fungus ... 11
By Dr. Eric B. Nelson

Seeing grubs and Pythium
in a new light
By Juergen Haber 15

NEWS BRIEFS

Trucking rules may apply
to turfgrass managers 12

EPA to hike enforcement 13

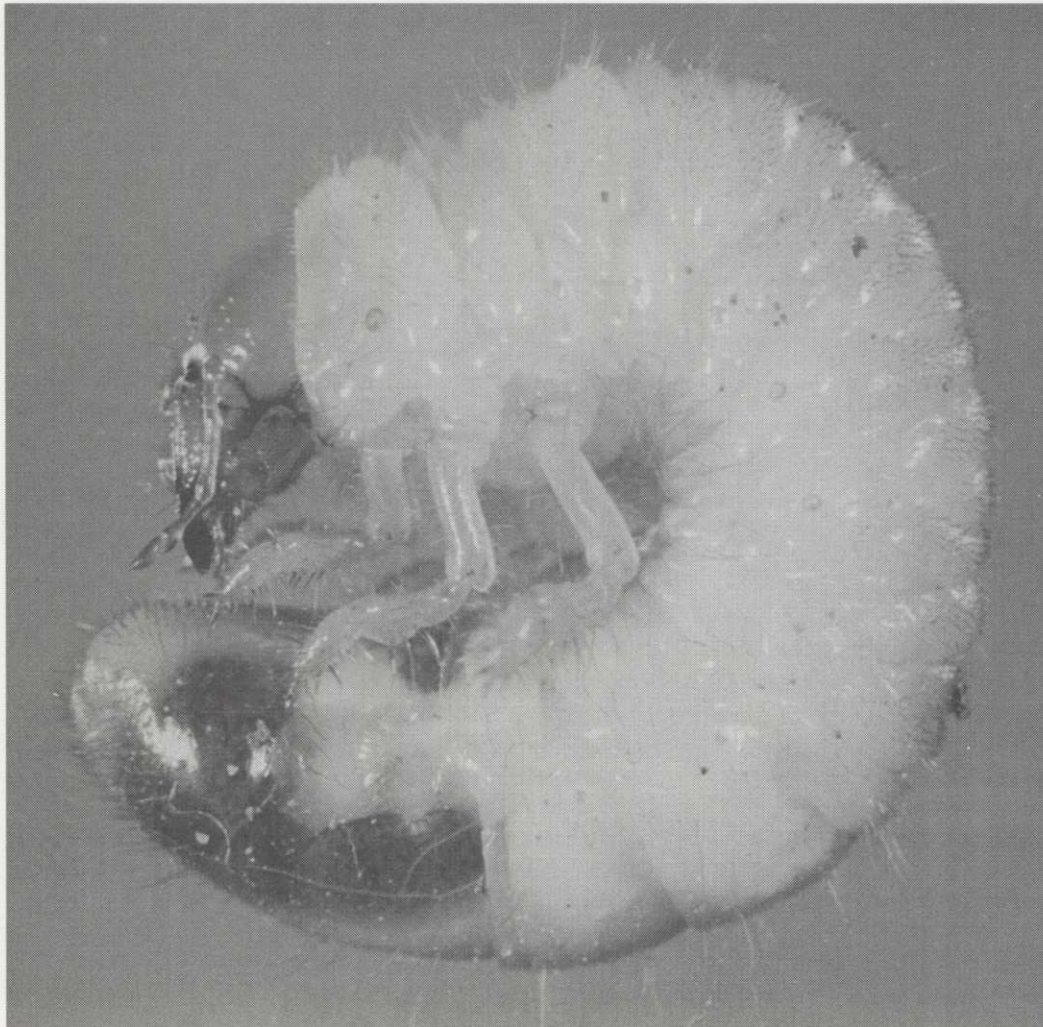
New bill would curtail
pesticides even more 14

More weeds mean lower
crop yields 14

IPM definition suggested 14

Worker protection
standards delayed 14

Cover photo:
Japanese beetle grub, about 20
mm in length.
Photo provided by Dr. Michael
Villani.



Identifying the factors

Predicting grub damage in turf

by Dr. Michael Villani

We undertook a study of 317 lawns in Rochester, New York, in 1990 to gather some of the first large-scale data and formulate protocols that could be used by turfgrass managers to identify sites that harbor grub popu-

lations, monitor them and make the appropriate control decisions dictated by what we learned.

Until now, turfgrass managers have been unable make informed decisions prior to applications of potent pesticides (the usual way to deal