

SPORTS TURF MANAGER

... for safe, natural sports turf

SUMMER 2006 • VOL. 19, NO. 2

STA SPECIAL WATER ISSUE

- 3 President's Message
- 4 What's New at the STA
- 5 Coming Events
- 6 Guest Editorial
- 8 OLWR Explained
- 11 Watering Restrictions
- 12 Functional Athletic Fields
- 17 Keeping Water in the Bank
- 20 Get SMART with Irrigation
- 21 Water Workshop Summary



ENVIRONMENTAL IRRIGATION



PROACTIVE WATER USE FOR SPORTS TURF MANAGEMENT

Water restrictions have become a serious concern for those responsible for premium field conditions for many sports such as soccer, football and baseball. We brought together a cross-section of speakers in April to discuss this issue. See inside for details.

Building Awareness: Smart Irrigation Month

THE PERFECT TIME TO PROMOTE EFFICIENT WATERING PRACTICES

Support an industry campaign to promote water conservation through advanced technology and practices. The Irrigation Association® has named July Smart Irrigation Month to promote efficient watering practices, technologically advanced irrigation products, and water conservation.



Smart Irrigation Month is an industry-wide opportunity to promote water-saving products, practices and services. Whether you're in sports field, golf or landscape irrigation, whether you're a manufacturer, distributor, dealer, contractor or grower, and no matter how large or

small your business, you can support Smart Irrigation Month.

This is an industry-wide opportunity to promote water-saving products, practices and services.

With growing demands straining water resources everywhere, it's important to promote water-saving products, adopt "best practices" and educate customers about how to do more with less. Smart Irrigation Month is the perfect time for the industry to promote a history of innovation and drive public awareness of the value of irrigation – from crop production to functional green spaces.

Visit www.irrigation.org to learn the benefits of supporting Smart Irrigation Month and to discover ideas that will help highlight products and practices making the most efficient use of water.

Ridley College Welcomes the Sports Turf Association

At the heart of the historic Niagara Peninsula nestled on 90 acres of manicured grounds lies Ridley College, venue for the Sports Turf Association's 19th Annual Field Day, September 21, 2006. Located in St. Catharines, Ontario, the Garden City is only 110 km from Toronto, 50 km from Hamilton, and 19 km from Niagara Falls and the U.S. border. The city is bisected by the Queen Elizabeth Way (QEW) and also links to the 400-series highways for easy access from points north, east and west. This year's program features Dr. Andrew McNitt, Assistant Professor of Soil Science at Penn State University, with sessions on drainage, utilizing compost on athletic fields, and prioritizing limited resources with regard to multi-use field maintenance. Dr. McNitt has been with Penn State for 21 years, teaching and conducting research relating to athletic field surface characterization and golf green construction and maintenance. He has consulted on numerous athletic field construction and renovation projects at all levels of play from high school through professional sports complexes.



Joining Dr. McNitt on the program is Evan Elford, M.Sc. Candidate from the University of Guelph, who will provide research results from both the 2005 and current season on the effects of

overseeding athletic field turfgrass to reduce weed pressure. We welcomed record attendance in 2005 and delegates will again be provided the opportunity to meet with industry suppliers to view displays and request equipment demonstrations. The Sports Turf Association is a professional association committed to the promotion of safe, natural sports turf. Visit www.sportsturfassociation.com for complete details as they become available or contact the STA office at 519.763.9431, email info@sportsturfassociation.com.

19TH ANNUAL FIELD DAY • SEPTEMBER 21, 2006 • VISIT WWW.SPORTSTURFASSOCIATION.COM

EVERGREEN™ Turf Blankets... ...trusted around the world!

**“Results Outstanding...,
Could Not Believe...”**

wrote **Dann Daly**, Park Maintenance Supervisor,
Parks & Recr. Dept., North Smithfield, RI

- Earlier spring green-up
- Faster seed germination
- Deeper root development
- Delays dormancy in fall
- Ideal winter blanket
- 3 & 7 yr. warranty covers
- Best for quick turf repairs
- Available in any size

**Want to know more?
CALL TOLL FREE
1-800-387-5808**

**COVERMASTER™
COVERMASTER
COVERMASTER**

MASTERS IN THE ART OF SPORTS SURFACE COVERS



Covers for baseball fields are also readily available.



Covered...

Uncovered...



It works on the greenhouse principle, every time!

covermaster.com

E-MAIL: info@covermaster.com

COVERMASTER INC., 100 WESTMORE DR. 11-D, REXDALE, ON, M9V 5C3 TEL 416-745-1811 FAX 416-742-6837



SPORTS TURF MANAGER

Volume 19, Issue 2, ISSN 1201-3765

is the official publication of the
SPORTS TURF ASSOCIATION INC.
328 Victoria Rd. S., RR 2, Guelph, ON N1H 6H8
Tel: (519) 763-9431, Fax: (519) 766-1704
E-mail: info@sportsturfassociation.com
Web: www.sportsturfassociation.com

BOARD OF DIRECTORS

PRESIDENT Gord Dol
PAST PRESIDENT Andrew Gaydon
TREASURER Rick Lane
SECRETARY Bob Sheard
EXECUTIVE MANAGER Lee Huether

DIRECTORS

Brian Adriaans, Jane Arnett-Rivers,
Cam Beneteau, Dave Chapman, Roy Forfar,
Paul Gillen, Bob Kennedy, Grant Mckeich,
Greg Snaith & Paul Turner

SPORTS TURF MANAGER

is published quarterly by the STA for free distribution to its membership. An annual subscription may be obtained for \$60/year. Please direct advertising inquiries to Lee Huether at the STA office.

EDITORIAL COMMITTEE

Jane Arnett-Rivers, Andrew Gaydon,
Lee Huether and Paul Turner

PUBLISHER

New Paradigm Communications
R.R. #8, Owen Sound, ON N4K 5W4
Tel. (519) 371-6818, Fax: (519) 371-5789
E-mail: joy@npc-solutions.com

CANADA POST PUBLICATIONS MAIL SALES AGREEMENT No. 40031883

Postmaster: Please return undeliverable copies to the STA at 328 Victoria Rd. South, RR 2, Guelph, ON N1H 6H8.



STA OFFICE HOURS

Lee Huether is in the office from 9:00 a.m. to 2:00 p.m. Tuesday through Friday. The office phone number is (519) 763-9431. At other times, a message may be left on the voice mail system. Please include the vital information of name, telephone number with area code, and time of calling. The office may be reached at any time by faxing (519) 766-1704 or via e-mail.

The President's Desk

GORDON DOL



Association News...

Well. Spring has come and gone. In southern Ontario, we started off with a drier than normal spring and quite a bit of sunshine to tease us of what is to come (we're in the midst of our first summer heat wave as we go to press!). Because the last two weeks of May were very wet, anyone trying to get jobs done involving earthworks or fine grading certainly had a tough time getting ahead. Sports turf managers were also battling these elements as in many cases, fields were wet, and either play continued and fields were damaged, or usage had to be cancelled.

On April 6 we held our Water Workshop hosted by the City of Kitchener. This issue of *Sports Turf Manager* is a special edition dedicated to coverage of the event. The workshop was very well attended. We had a great group of speakers and the sessions were highly informative. During the lunch break, we also had a putting contest with proceeds going towards turfgrass research. Thanks to Tim Ernst and Greg Snaith who provided the impetus for the workshop and all committee members for a job well done.

Mark your calendars!! September 21 is our 19th Annual Field Day which promises to be yet another great one. A solid program of speakers is being developed

which includes Dr. Andrew McNitt from Penn State. The Field Day will be held at Ridley College in St Catharines.

The Atlantic Turfgrass Research Foundation held their annual conference March 21-23 in Saint John, NB. Dave Smith and I had the honour of speaking at the conference on soils, sports turf management and construction. There were approximately 60 sports turf managers and parks personnel in attendance. The session was very well received. We were subsequently invited to tour the city's parks system. I always value opportunities to network and learn from fellow sports turf professionals and this conference was a welcome opportunity.

In my last message, I spoke of the changes made to the size of the Board of Directors due to increasing association workloads. The first meeting of the new board was held on March 28. For all the years that I have been on the STA board, we have always used the boardroom at the Guelph Turfgrass Institute. Well, we have now outgrown it and have to use the main meeting room! At the March meeting, our various committees were set up with a few minor changes. Primarily, there are now only one or two board members per committee. The balance of the committee will be made up of other STA members. Board members will chair the committees and will be seeking your help. Whether you volunteer or get "volunteered," your assistance will be greatly appreciated!

Finally, one of the goals of the Sports Turf Association is to promote communication and professional development of sports turf managers. If you have any other topics for workshops or have other educational ideas, please forward them to Lee Huether at the STA office or to any board member.

As a parting note, membership invoices have been mailed out. Your prompt attention to these is greatly appreciated. ♦



WHAT'S NEW...

BOARD CHANGES & RECENT SPRING WORKSHOP COMMITTEE & SPEAKERS

Welcome New Board Members

The Sports Turf Association elected its 2006/2007 officers and directors at the annual meeting held at the close of the Ontario Turfgrass Symposium, February 21, 2006. Joining the STA Board of Directors are from left to right Gregory Snaith/EnviroIrrigation Engineering Inc., Bob Kennedy/Sport Turf Management Solutions, Dave Chapman/City of Toronto, and Grant Mckeich/Town of East Gwillimbury.



Proactive Water Use for Sports Turf Management: Implications of Municipal Water Restrictions Committee Members and Speakers

From left to right: Gregory Snaith/EnviroIrrigation Engineering Inc., George Sousa/Grand River Conservation Authority, Tim Ernst/City of Kitchener, Rob Witherspoon/Guelph Turfgrass Institute, Terry Gillespie/University of Guelph, Steve Gombos/Region of Waterloo, Bob Sheard/Sports Turf Association, Jane Arnett-Rivers/Town of Oakville, Gord Dol/Dol Turf Restoration Ltd., Andrew Gaydon/Vanden Bussche Irrigation.

Absent from photo: Bob Cheyne and Larry Lynch/City of Kitchener, Lee Huether/Sports Turf Association.

91 YEARS AND STILL CLICKING

www.rittenhouse.ca • 1-800-461-1041

TOP DRESSER

- SELF-PROPELLED
- 250LB HOPPER CAPACITY
- 3' TO 10' SPREAD WIDTH
- 34" WIDE, ABLE TO FIT THROUGH GATES



GRANULAR SPREADER

- SELF-PROPELLED
- JUMP ON AND GO!
- 125LB HOPPER CAPACITY
- OVER 100,000 SQ. FT. OF PRODUCTION PER HOUR



Coming Events

July 18-21

*Turfgrass Producers International
Summer Convention & Field Day*
Memphis, TN
Info: 847-649-5555
www.TurfGrassSod.org

Aug. 11-19, 2006, Aug. 10-18, 2007

*International Softball Congress
Schneiders World Fastball
Tournament*
Peter Hallman Ball Yard
Kitchener, ON
Info: www.kwfastball.com

August 24

*Guelph Turfgrass Institute
Research Field Day*
Guelph, ON
Info: (519) 767-5009

August 28

*Ontario Turfgrass Research
Foundation Annual Fundraising
Golf Tournament*
King Valley Golf Club
King City, ON
Info: (519) 824-4120 x 56149



**Sports Turf Association
19th Annual Field Day**

SEPTEMBER 21, 2006

Ridley College, St. Catharines, ON
Info: (519) 763-9431
www.sportsturfassociation.com
see page 2 for further details...

October 3 & 4

*Ontario Parks Association 54th
Annual General Meeting and Fall
Seminar*
Location to be announced
Info: (905) 864-6182
www.opassoc.on.ca

NOVEMBER 1, 2006

**STA Scholarship
Application Deadline**

Info: (519) 763-9431
www.sportsturfassociation.com

November 14-16

*Empire State Green Industry Show
(Formerly NYSTA Turf and Grounds
Exposition)*
Rochester, NY
Info: (518) 783-1229
www.nysta.org

December 7

*Ontario Recreation Facilities
Association Annual General Meeting
& Regional Information Session*
Oshawa, ON
Info: (416) 426-7062
www.orfa.com

January 9-11, 2007

*Landscape Ontario
Congress 2007, featuring
Fencecraft*
Toronto, ON
Info: www.locongress.com

January 29-February 23, 2007

*Turf Managers' Short Course, Univer-
sity of Guelph*
Canada's most successful and valued
Turf Managers' Short Course, held at
the Guelph Turfgrass Institute, will be
offered from January 29 to February
23, 2007. Benefit from the expertise
and experience of industry profession-
als and University of Guelph faculty
while enhancing your knowledge of all
aspects of turf management and cul-
ture. For more information, visit
www.open.uoguelph.ca/turfmanager
or contact the Office of Open Learn-
ing, University of Guelph at (519) 767-
5000.

GET ON THE LIST!

Contact the STA if you have an event
you'd like to advertise in the STM.



New Members

WELCOME TO THE STA!

Frank Reddick

Logic Alliance Inc., Barrie, ON

Peter Verschuuren

Town of Ajax, ON

James Wolozanski

Town of Oakville, ON

Lee Ripenburg

Town of Lincoln, ON

Phil Nie

Haldimand County, Dunnville, ON

Bob Walter & Rob Hincks

Town of Markham, ON

Alan Driedger

AWS Irrigation Management Inc.
Guelph, ON

Odds and Ends

STA Membership Plaques

Display membership plaques are
available in executive engraved
walnut for \$50 plus S&H. To order,
contact Lee at the STA office.

Autumn 2006 Submissions

If you have something you'd like
to submit for the next issue,
please forward it to the STA
office by August 11, 2006.

Editorial Content

Opinions expressed in articles
published in *Sports Turf Manager*
are those of the author and not
necessarily those of the STA, unless
otherwise indicated.

THINKING OUTSIDE THE BOX

SPORTS TURF MANAGER GUEST EDITORIAL BY R.W. SHEARD, PH.D., P.AG.

At a recent workshop sponsored by the Sports Turf Association on the impact of water use bylaws on sports field management, a factor which received little discussion was TIME. As a result of such a bylaw, the turf manager is faced with three restrictions due to time.

First, he must accommodate the permitting of games in the evening which rules out irrigation during that time. Second, he may often only run a few stations at a time because the water service provided to the field does not provide the volume of water required to irrigate the entire field at one time. Third, union contracts may require extra costs due to supervision of the system outside normal working hours.

An additional factor for consideration is the SOIL in the rooting zone which has

a time component. Some soils, particularly the sand based systems, require more frequent irrigation; possibly every second day under high evapotranspiration. This is due to the relatively low amount of plant available water held in the root zone. In contrast, a silt loam root zone may require only a weekly irrigation.

Because of TIME, the water restrictions based on calendar date and clock time, as illustrated in the box, can severely limit the ability of the sports turf manager to maintain a quality turf surface.

An alternative is the allocation of the required total volume of water to the turf manager on a seasonal basis for the use of water on all irrigated fields under his jurisdiction. This alternative places the control of the day by day management of water, an essential element in the management of turf, with the sports turf manager.

Two steps are required in this procedure. The first is to meter the water service to each field as is done for the water service to each household.

The second is an estimate of the irrigation requirement for each field for an entire season. This step would require an estimate of the long term water deficit [long term rainfall less evapotranspiration] for the months of May through September for the geographic area. The long term water deficit for various regions in Ontario is available, including an estimate of the risk of a drought of various magnitudes, in the following publication (Brown, D.M., A. Bootsma and R. De Jong. *Analysis of Growing Season Water Deficits in Ontario*. Univ. of Guelph LRS Technical Memo. 98-1).

When combined with the total square area in metres of irrigated sports field turf in the jurisdiction, an estimate of the total volume of supplemental water for the growing season can be obtained. This volume of water is then assigned to the sports turf manager for use at his discretion at any time during the season. The water meters allow the jurisdiction in turn to monitor the assigned use and issue any penalties it may feel warranted to apply for misuse.

The turf manager would be entitled to irrigate after 9 p.m. or before 7 a.m., and at any time of the day if he is in an overseeding program. He would not be restricted to the date on the calendar so that an entire field could be irrigated on the same day. High demand sand root zone fields would not be placed in jeopardy due to water stress.

The turf manager may decide he must use his allotment of water to prevent the loss of the turf on a field with a sand base and allow a field on natural soil to go dormant even though it can expose that field to damage if play is permitted to continue.

While this system provides the sports turf manager with a more realistic approach to the use of water as a management tool, it requires significant knowledge on his part. He must be familiar with the water needs of turf, water relations in soil on each of his fields, weather forecasting and the most up-to-date irrigation controllers and delivery systems.

The days of setting the controller in May and complaining about water restrictions are over. ♦

By-law Number (2003)-17106. A By-law to prescribe outside water use restrictions within the City of Guelph.

DEFINITIONS

Program Level One. Program Level One shall be in accordance with the guidelines set out in the OLWRP Level One, or when the Water Storage Capacity is less than or equal to 75% but greater than 65%.

Program Level Two. Program Level two shall be in accordance with the guidelines set out in the OLWRP Level Two, or when the Water Storage Capacity is less than or equal to 65% but greater than 55%.

Program Level Three. Program Level Three shall be in accordance with the guidelines set out in the OLWRP Level Three, or when the Water Storage Capacity is less than or equal to 55%.

Sports Field. Means a grassed playing area designed, equipped and used exclusively for the conducting of organized, multi-player sporting events and practices.

RESTRICTIONS

Program Level Two

17.(1) During Program Level two, no person shall water any Sports Field ... except in accordance with the following:

- (a) Sports Fields or plants on the premises of even-numbered municipal addresses may be watered between the hours of 7:00 a.m. and 9:00 a.m. and between the hours of 7:00 p.m. and 9:00 p.m. only on even numbered calendar days; and
- (b) Sports Fields or plants on the premises of odd-numbered municipal addressee may be watered between the hours of 7:00 a.m. and 9:00 a.m. and between the hours of 7:00 p.m. and 9:00 p.m. only on odd numbered calendar days.

Program Level Three

19.(1) During Program Level Three, no person shall (a) water any lawn or boulevard or sports field at any time, using any means whatsoever...



PROACTIVE WATER USE FOR SPORTS TURF MANAGEMENT

IMPLICATIONS OF MUNICIPAL WATER RESTRICTIONS • EXTENSIVE STA SPRING WORKSHOP COVERAGE PAGES 7-23

WORKSHOP SESSIONS IN ORDER OF APRIL 6 SCHEDULE

- *The Ontario Low Water Response (OLWR)*, George Sousa, Grand River Conservation Authority
- *Watering Restrictions and the Need to Conserve*, Steve Gombos, Water Efficiency Manager, Region of Waterloo
- *Managing Functional Athletic Turf*, Tim Ernst, Former Supervisor of Sports Turf, City of Kitchener
- *Water in the Bank*, Terry Gillepsie, University of Guelph
- *Get Smart: You Cannot Manage What You Cannot Measure*, Gregory Snaith, EnviroIrrigation Engineering Inc.
- *Workshop Summary*, Rob Witherspoon, Director, Guelph Turfgrass Institute

During the past several years, an increasing number of municipalities have implemented water use restrictions for turf for all purposes. These restrictions have become a serious concern for those responsible for premium field conditions for many sports such as soccer, football and baseball. On April 6, 2006, the Sports Turf Association hosted a workshop, the intent of which was to bring together those involved in managing the water supply of a municipality in the best interest of its citizens and those responsible for the management of quality sports turf surfaces for use by its citizens. In order to further distribute the wealth of information presented, we are pleased to publish summary articles provided by our speakers. We extend our thanks to them for further participating in this project.



ONTARIO LOW WATER RESPONSE (OLWR)

A MEASURE INTRODUCED IN RESPONSE TO LOW PRECIPITATION IN THE PROVINCE DURING THE LATE 1990s

Many communities in southern Ontario are faced with water shortages because of a growing population and a limited supply of good quality drinking water. This has led to placing a high value on water and conservative water use. In addition to limited sources of water, there can be further reduction in supply due to natural conditions such as low rainfall and hot temperatures. Ontario Low Water Response (OLWR) was introduced in response to low precipitation in the late 1990s which caused drought conditions throughout many parts of Ontario. It is a voluntary program designed to take early action during low water conditions to minimize socioeconomic and ecological impacts caused by low water availability.

It is important to understand that water restrictions can be put in place for many different reasons. A water supply system

may have a short term loss of volume caused by equipment failure, contamination or accident. In these instances, water restrictions may be initiated to preserve the supply capacity for essential water use. These restrictions are often temporary and may last a few days to a few years depending on the supply problem.

Water restrictions may also be placed on a community seasonally to help control spikes in water use and keep the cost of additional water supply infrastructure to a minimum. Finally, water restrictions can be put in place in times of drought when water availability is low because of low flow in streams and rivers or low ground water tables. It is in this last case when OLWR is initiated.

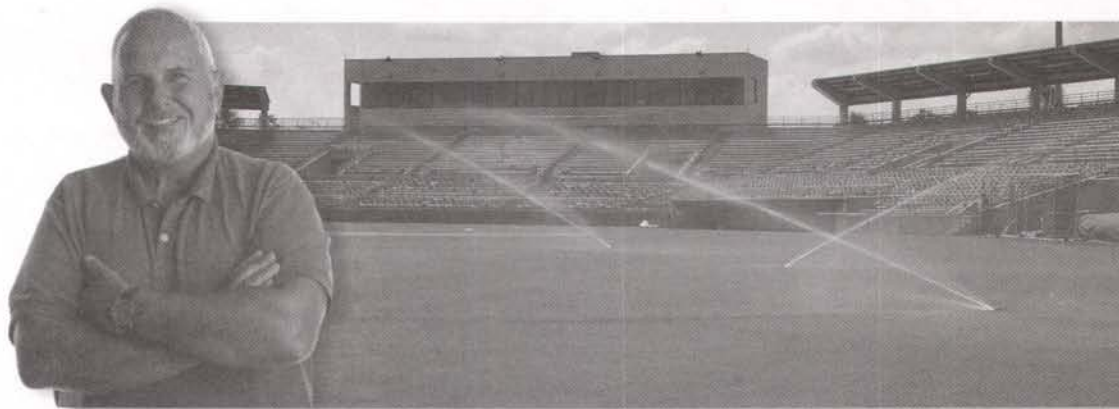
Low Water Conditions and Drought

To understand OLWR it is important to understand the terms low water condi-

tions and drought. During the course of a typical year there will be times when the amount of precipitation may not be enough to offset the need for water. This is part of the natural yearly cycle and should be taken into consideration when designing water supply systems.

Low water conditions happen when precipitation is lower than normal leading to low flow in rivers and streams and possibly affecting the groundwater table. Low water conditions can occur as the result of a few weeks with no precipitation during a dry period or one year of extremely low precipitation or a few consecutive years of lower than average annual precipitation. Long term low precipitation can stress the natural system to the point that it may take several years of higher than average precipitation to recover. Drought is an extreme case of low water availability.

HEALTH INSURANCE FOR YOUR TURF.



It's all about the kind of coverage you have. And Hunter irrigation products deliver performance that ensures your turf is lush and healthy over every inch. As a sports turf manager, your work is on display for the world to see. That's why I use Hunter.

Hunter[®]
The Irrigation Innovators

Ask for your Free Hunter Products Catalog 1-800-733-2823 www.HunterIndustries.com

An example of annual precipitation over 65 years at Lake Belwood's Shand Dam on the Grand River is shown in Figure 1. Average annual precipitation is set at zero, with positive values representing higher than average precipitation years and negative values representing lower than average precipitation years. Examples of extreme low precipitation years such as 1963 and 1998 and consecutive years of low precipitation such as the early 1960s and late 1980s can be seen.

Ontario Low Water Response (OLWR)

OLWR was designed to deal with low water and drought conditions caused by natural factors. The program relies on stakeholders to voluntarily reduce water use through conservation efforts when faced with low water conditions. Only in extreme drought conditions will regulated water restrictions be imposed by the province, although municipalities may impose water restrictions for their serviced areas as part of a voluntary water use reduction plan.

Since OLWR is based on voluntary reduction in water use, one of the most important aspects of the program is its cooperative approach to decision making. Decisions regarding the request to reduce water use are made by the local Water Response Team (WRT). The WRT is made up of representatives from local industry, municipalities, commercial and special interest groups. In this way, each stakeholder group can voice their concerns regarding water use and help to share the burden of conservation efforts. The degree of low water in the watershed is expressed by the OLWR using a system of Levels shown in Table 1.

The decision to declare a Level I or II low water condition lies with the local WRT. Level III can only be declared by a provincial committee with recommendation from the local WRT. The WRT meets to discuss low water levels when one or both of the indicators for that level are reached (see Table 2). They will declare a low water level if they feel the situation will not improve unless water use is decreased (e.g. no forecasted precipitation). Once a level is declared, it is the responsibility of the WRT with help from provincial representatives to communicate the request to reduce water use in their area.

Figure 1. Annual precipitation at Lake Belwood's Shand Dam on the Grand River from 1940 to 2005. Annual precipitation is measured as the difference from the long term average over the given time period.

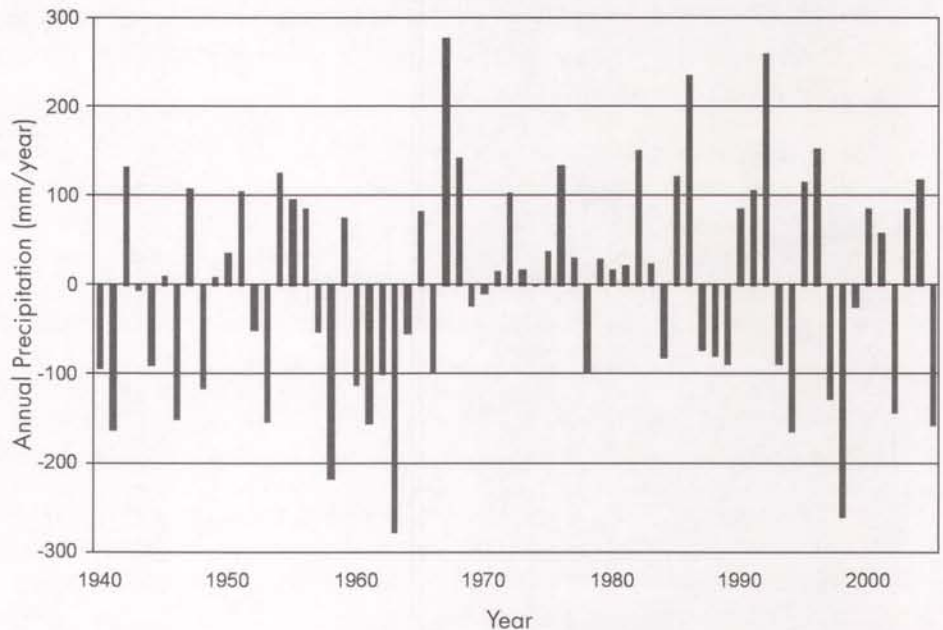


Table 1. Description of each level under OLWR and what action should be taken if the level is declared.

Level	Description	Action
Level I	Potential water supply problem	Voluntary reduction of water use by 10%
Level II	Potentially serious water supply problem	Voluntary reduction of water use by 20%
Level III	Failure of the water supply to meet demand	Possible regulation of water restrictions by provincial agencies

Table 2. Indicators for low water conditions under OLWR (adapted from OLWR MNR July 2003).

Condition	Indicator	
	Precipitation	Streamflows
Level I	<80% of 3 or 18-month average	<70% of normal summer low flow
Level II	<60% of 1, 3 or 18-month average	<50% of normal summer low flow
Level III	<40% of 1, 3 or 18-month average	<30% of normal summer low flow

The Grand River and OLWR

The Grand River watershed has had an active WRT since 2001. The team meets regularly to review low water conditions, share between members, and discuss water conservation efforts. Membership in the Grand WRT includes representation from each of the member municipalities,

agriculture, golf course superintendents, aggregate producers, fish and wildlife special interest groups, First Nations and the Conservation Authority. Many provincial and federal representatives sit on the committee as advisory members without voting rights. The Grand River Conservation Authority (GRCA) provides technical sup-

port to the committee. During low water conditions, the WRT meets as needed to declare or remove levels.

The Grand WRT has used various methods to reach voluntary reductions during Level I and Level II conditions. They include issuing press releases to the local media encouraging water conservation, contacting large water users in the watershed directly, and meeting with sector groups to formulate plans for water conservation. Voluntary water reduction strategies that water users in the watershed have used include municipal outdoor water use restrictions, water recycling and recirculation, installing water storage systems, and staggering water takings. Voluntary water use reductions within the Grand River watershed have helped during low water conditions to prevent socioeconomic and ecological losses as the result of low water flows.

To provide information regarding low water conditions to the general public, the GRCA maintains a section on their website for low water response. In this

section, current conditions are posted for various areas of concern within the watershed. Information includes daily flow rates, 7 day average flow rates, and indicators for each level. Current precipitation values can also be found on the GRCA website.

Observations

Although the Grand WRT has had success with using OLWR to help mitigate low water conditions, OLWR is not the solution to water shortages. The program was designed to deal with infrequent water shortages caused by low precipitation and to act quickly when faced with low water conditions to attempt to avoid socioeconomic and ecological losses. The solution to water shortages lies in proactive planning and resiliency in both the water supply system and with the end user. For the sports turf industry, building resiliency into turf surfaces is essential. This may include new varieties of turf, more innovative and adaptable irrigation systems, and better understanding of soil-

water-plant interactions. Drought conditions, although infrequent, are unavoidable. Building resiliency into water supply and water use systems and planning for low water availability can lessen the impact of drought conditions allowing for faster recovery from drought and reducing economic losses.

For More Information

- www.grandriver.ca – Low water conditions and declared levels for the Grand River Conservation Authority
- www.mnr.gov.on.ca – Low water conditions for the province, OLWR regulations and information
- Or contact your local conservation authority or MNR district office ♦

~ Presented by George Sousa, P.Eng., Manager of Resource Science, Information and Policy, Grand River Conservation Authority. Written by Stephanie Shifflett, EIT, Water Resources Engineer, Grand River Conservation Authority

"The ART of Sports Field Marking"

**SIMPLISTIC
LINES** INC.

FIELD MARKING PAINTS AND APPLICATORS

R.R.#5 Stratford On Canada N5A 6S6
Tel. 519.348.0653 • Fax: 519.348.0654
www.simplisticlines.com



WATERING RESTRICTIONS AND THE NEED TO CONSERVE

PEAK DEMANDS ARE MAINLY ATTRIBUTABLE TO OUTDOOR WATER USE, PRIMARILY LAWN WATERING

In 2005 the Region of Waterloo implemented "Stage 2" outdoor water use restrictions due to the temporary loss of wells supplying the Greenbrook Pumping Station. The water restrictions were in effect from May 15 to September 30, 2005. Lawn watering was restricted to the hours of 7:00 a.m. to 10:00 a.m. and 7:00 p.m. to 11:00 p.m. one day per week. The date was dictated by the last digit in the street address, beginning with 0 or 1 on Monday and progressing to 8 or 9 on Friday. No weekend irrigation of residential lawns was allowed.

In Ontario there is a myth that we have plenty of water. While bountiful, there are increasing demands on the Great Lakes water and pipelines to tap them are expensive. Due to ecological impacts there has been a decline in ground water levels and the demand on ground water continues to rise. Recurring drought has taxed the recharge of these aquifers. Then there are the risks of contamination of existing sources, which was the cause of the Greenbrook and Walkerton problems.

The Region of Waterloo has 80 active water supply wells and one Grand River intake. Eighty percent of the region's water supply comes from these wells while

20 percent is derived from surface water. The long term plan is a pipe line to Lake Erie but current scheduling has that set at 2035. The region's current supply system is facing numerous problems such as aging wells with declining output, rapid residential and industrial growth and more stringent provincial regulations while at the same time having to maintain a minimum reserve for fire protection and other emergencies.

One role of the Water Services Division of the Region of Waterloo is to provide potable water at wholesale costs for local utilities that sell to residential, industrial, commercial and institutional customers. The average daily demand for these purposes in the region is 36 million gallons per day; however, peak demands during the summer months can reach 52 million gallons per day. With a maximum pumping capacity of just over 50 million gallons per day in Waterloo Region, the need for conservation during peak times is apparent. These peak demands are mainly attributable to outdoor water use, primarily lawn watering.

To minimize the peaks in water demand, the region undertook several initiatives to reduce outdoor water

consumption. Among these were an educational program about water conservation, rainwater harvesting and Stage 2 water restrictions. Stage 2 restrictions were intended to limit discretionary outdoor use but not to limit business usage.

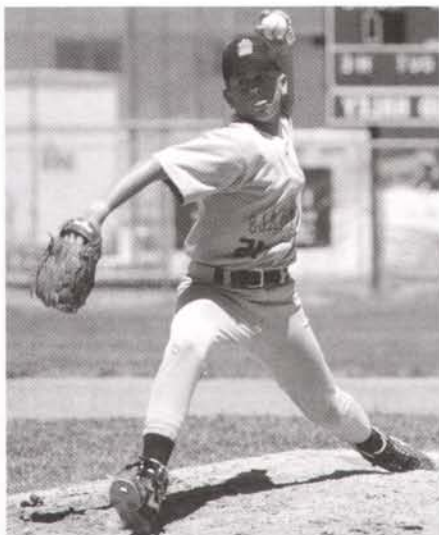
A recent survey revealed that 91 percent of respondents support outdoor water use restrictions. During the summer of 2005, peak water demand was reduced by at least 10 percent per capita compared to 2001 and 2002, which were similar years for temperature and precipitation levels.

To accommodate the concerns of the managers of municipal sports fields, the restrictions on water use at Stage 2 have been lifted for the 2006 season. The reason for this amendment to the region's bylaw was it considered sports fields as highly specialized surfaces with strict requirements for seeding, management and efficient irrigation practices. It was also noted that sports fields are operated as a business, and a decline in turf quality may result in lost business. ♦

~ Presented by Steve Gombos, Water Efficiency Manager, Region of Waterloo
Summarized by Bob Sheard, Sports Turf Association

MANAGING FUNCTIONAL ATHLETIC FIELDS

WATER RESTRICTIONS MAKE IT INCREASINGLY DIFFICULT FOR SPORTS TURF MANAGERS TO PROVIDE ACCEPTABLE FIELDS



Functional: not necessarily aesthetic nor pleasing, but serving a purpose.

Safe: free of danger or risk (for athletes)

Durable: resists wear (weather and competition)

Enhance: heighten or intensify (the game)

The responsibilities of sports turf managers go well beyond maintaining and managing healthy turfgrasses. Field performance plays a major role in determining whether playing conditions enhance the game as well as providing a safe playing surface. Over the last several years, restrictions have been placed on the use of pesticides and also water in some areas. This causes me great concern, that as sports turf managers, we are finding it increasingly more difficult to provide acceptable playing fields for varying levels of play.

An issue I would like to address is the use of terms such as *aesthetic purposes*, *non-essential*, *cosmetic* and *lawngrasses*. These are descriptions often used to define limitations on the use of pesticides or water. Unfortunately to date, sports turf is typically combined with lawngrasses and general parkland when it comes to language surrounding restrictions. It is fairly obvious to sports turf managers that athletic fields are not lawngrasses, but functional turfgrass areas designed specifically to host and support athletic events.

I choose to categorize turfgrasses into three areas. They are 1) utility turf: medians, erosion control, etc.; 2) lawngrasses: residential and commercial properties, general parkland; and 3) athletic turf: a) golf turf, b) sports turf.

As mentioned above, the sports turf manager must be aware of much more than cultivating healthy turfgrasses. It is my opinion that we should be providing "safe, durable athletic fields that enhance and support the game." This article will focus mainly on the role of water and how it relates to field performance.

Can we use these definitions when describing our fields? As the level or intensity of competition increases, so does the demand on the athletic surface to perform – or allow athletes to perform safely and to the best of their ability. I break down performance of an athletic field into three areas: 1) impact absorption; 2) traction, footing and stability; and 3) enhancing the game.

Athletic Turf, Soils, Moisture and Related Performance

In order to provide safe fields and in turn improve field performance, we must first be able to successfully maintain a healthy turfgrass community. The three simple or basic needs that the plant requires are light, nitrogen and **water**. Without any, or all, it is absolute – the turf community will fail. Why is it imperative that we provide a healthy stand of turfgrass? What does the turfgrass provide for athletes?

Turfgrass Density

It is the turfgrass density of the field, or the individual number of plants per square unit of measure, that greatly enhances the impact absorption capabilities and reduces abrasiveness of the surface. Impact testing equipment such as the Clegg Hammer measures deceleration of the internal hammer dropping, which in turn measures surface hardness (GMAXX). Through research, we know that GMAXX ratings upwards of 200 pose

greater risks for athletes (Consumer Safety Authority). Not only acute injuries, but medical information also points to chronic injuries due to exposure to poor surfaces. This exposure weakens tissues and can lead to muscle and sprain injuries. Dense turfgrass provides a cushion for athletes. Interestingly enough, as high school fields face maintenance challenges, I was approached by regional athletic directors at area high schools seeking advice for concerns they had over witnessing increases in shoulder, ankle and concussion injuries suffered by their varsity athletes.

The density of the field also plays a major role in providing an athlete with traction (linear and rotational), footing and stability. This can be referred to as the torque characteristics of a playing surface. Stops and starts and changes in direction are all part of sport. Poor footing exposes athletes to a greater risk of tears and sprains.

Note: 1). Not only general density, but individual turfgrass varieties exhibit different shear strength ratings under the same cultural inputs. National Turfgrass Evaluation Program trials (NTEP) provide a good starting point for selection of premium athletic turf varieties. 2). At times of high heat, fields high in *Poa Annua* content can be syringed to reduce stress and maintain density during summer

Soils and Soil Moisture

Soils and soil moisture play an important role on impact absorption and traction/footing, etc. Coupled with turfgrass density, the moisture content and soil texture determine the ultimate impact rating of a field. The higher the moisture content and the lighter the soil texture, the "softer" the field will play. Take football for example. The argumentative object of the game is to put your opponent on the ground as quickly and aggressively as possible. Why do elite football players prefer to play on natural surfaces versus artificial, especially earlier generation synthetic turfs? A lack of resiliency in the playing surface significantly increases the risk of impact injuries.

Field construction specifications are gradually improving in Canada, with more "engineered soil" fields being constructed, but many existing and new fields are native soil based with high clay content. As soil moisture is depleted on these fields, surfaces begin to harden. Depending on the level of play, ET based irrigation practices may sustain healthy turfgrass, but may at times leave the immediate playing surface firmer than one would like. Lighter textured rootzones provide more favourable impact characteristics under depleting soil moisture, but must be managed much more carefully due to water holding capacity characteristics.

Enhancing the Game

Ultimately, field performance, as it relates to turf, is influenced by cultural practices, turfgrass density, rootzone composition and soil moisture. Field performance will determine how the playing surface enhances or supports the game. I mentioned previously how turf density impacts footing and traction for safety purposes. I also mentioned that fields that look great may not perform very well. Remember, we're managing functional athletic turf, not lawngrasses or general parkland.

Cultural practices such as mowing (frequency, quality and height of cut), overseeding (frequency and species/varietal selection), thatch levels, topdressing (frequency and material selection), fertility and irrigation practices (overall turfgrass health/density and soil moisture) etc. all greatly influence every athletic event. The ability of the playing surface to support stops and starts and changes in direction determine the stability or torque strength of a field.

Obviously, elite athletes require greater stability from the field than youth recreational athletes. The speed, weight and forces generated by athletes at higher levels of play create these demands. The skill, precision and speed of the game is greatly affected by poor playing conditions (hence the NFL tarping policy). I spoke with George Toma, retired NFL groundskeeper and now charged with installing the playing surfaces for the Superbowls, for over an hour specifically on how he advises on the size and number of cleats to wear in relation to torque characteristics of the field. (A modified torque wrench fitted with cleats provides readings).

Turfgrass rooting, rootzone composition and topdress applications factor in

determining field stability. Sand provides much greater friction for a playing surface, especially under wet conditions, than does heavier soils (1/4" - 1/2" of thatch may provide a soil buffer and increase footing). The flipside can be that heavier soils will provide more root stability than sands. Tear out and divoting are sometimes an issue, more often on sand based systems, but native soils too high in upper profile water content are prone to divoting and lack of stability as well. Although organics may be beneficial in increasing water/nutrient holding capacity and "loosening" tight soils, layering of these materials by continual application of high organic matter topdress blends can adversely affect the stability of the root system. Establishing athletic fields on the Holland Marshes would produce less than desirable playing surfaces. Furthermore, excessive organic matter may reduce percolation rates or cause water repellency in sand based systems.

Ball response is also influenced significantly by how sports turf managers manage the playing surface. Field sports such as baseball (will discuss infield skins later), soccer and field hockey all rely on surface uniformity and consistency, as a



Red and grey clay products designed for baseball, cricket and tennis, along with groundskeeping tools and accessories.

MAR-CO CLAY PRODUCTS INC.

Tel. 519-684-7591 Fax: 519-684-7457
www.marcoclay.com



JOHN BLADON

Technical Sales Representative
Tel: 519.757.0077
Cell: 519.574.2013
E-mail: jbldon@nu-gro.ca

Nu-Gro Professional Turf

10 Craig Street
Brantford, Ontario N3R 7J1
Product Info Line: 1.800.461.6471



Box 171
Harriston, Ontario
N0G 1Z0
Phone (519) 338-3840
Fax (519) 338-2510

Edward J. Seifried
J. Robert Dippel

SEEDS



PLANT PRODUCTS

Turf MVP • Grass Seed
Turf & Tree Fertilizers
Pest Control Products

Plant Products Co. Ltd.

Brampton, Ontario
905-793-7000 or 1-800-387-2449
Fax 905-793-9632 • plantprod.com

large portion of the game is played with the ball rolling across the playing surface. An example would be how high mow heights and/or surface non-uniformity lead to soccer players taking a completely different approach to the game. It becomes played more through the air versus along the ground. This not only impacts the quality of game for elite athletes, but also influences how our youth are trained and learn the game. It affects how the ball is fielded, passed or dribbled over the surface. Safety implications also exist by the way of unexpected ball responses leading to ball strikes, especially in baseball.

Infield Skin Management

Unfortunately, the importance that water plays in managing baseball infields is not often realized in Canada. As with culturing turfgrass, looks can be completely misleading as to the performance and safety of the surface. Although somewhat off topic, I feel it necessary to quickly brief readers on infield management techniques before discussing the **important role**

water plays. The four key areas I like to focus on when managing baseball infields are: 1) selection of material; 2) conditioning products; 3) moisture management; and 4) surface preparation.

A baseball infield must perform in a similar fashion as turfgrass. The field manager must be concerned with impact absorption, traction, footing, stability and also how the skinned surface will enhance or support the intended level of play. All four of the above criteria combine to determine infield performance. Although this is not a discussion specifically on cultural practices for managing athletic fields, it does need to be mentioned that the demands of the intended user require different approaches to design and management.

Ascertaining the intended level of play, selection of material and implementation of a management program is key for an infield to perform well. The capability to apply correct amounts of water and the infield to absorb and hold these amounts becomes more critical as the level of play

increases. The information below leans towards managing infields for elite play.

Selection of Material

The type or composition of the infield blend will factor heavily in the success of the field. The typical "stone dust" infield would certainly not enhance or may even in fact create safety concerns for higher levels of play, while a more favourable infield blend or "professional" type blend may be excessive for lower levels of play. Very briefly, an infield blend or product should not be overly abrasive for lower levels of play and have the ability to provide a "tight" surface, hold adequate moisture and exhibit drainage characteristics for higher levels. The infield blend I like to use and have had success with consists of 60% sand, 25% clay and the rest silt screened to 1/8".

Conditioning Products

The use of specifically designed products that condition infields greatly improve the quality of the playing surface, absorb

growing...



APPLICATION

going...



12 HOURS

gone!



24 HOURS

TOTAL WEED CONTROL IN JUST 24 HOURS!

EcoClear

SUPER FAST NATURAL HERBICIDE USING ACETIC AND CITRIC ACID*
PMRA Registered. *Natural components from vinegar and lemon juice.

DISTRIBUTED BY:

Plant Products Co. Ltd. (905-793-7000); Plant-Prod Quebec (450-682-6110);
MGS Horticultural Inc. (519-326-9037); Westgro Horticultural Supplies Inc. (403-287-3988); Westgro Sales Inc. (604-940-0290)

For more info, visit us online at www.Ecoval.ca

excess water and also reduce the amount of water required to manage an infield for elite play. Calcined clay products are my choice due the stability of the product over time. Industrial absorbents do not provide the same characteristics and will break down gumming up your infield skin.

I'd like to mention two types of calcined clay. First, drying agents, which are used to absorb excess water from the field during play and secondly, infield conditioners, which greatly improve the workability of the surface and provide water absorption characteristics as well. The latter is important as the conditioner will release stored water into the infield skin as it begins drying out. Conditioners are incorporated into the skin and infields and then "capped" or topdressed with about a 1/4" of infield conditioner to "seal" in the sub-base moisture and provide an optimum surface.

Moisture Management

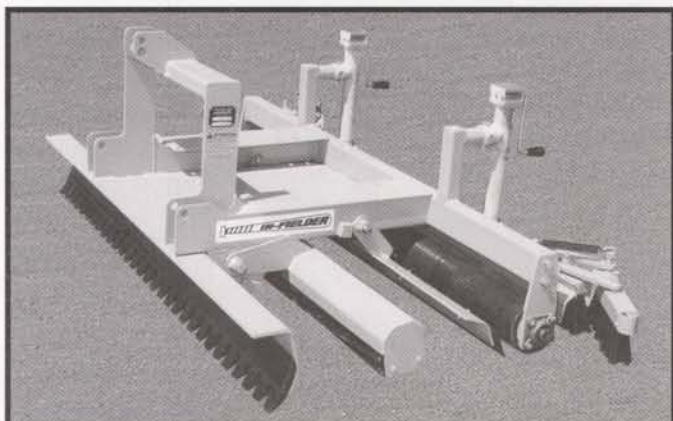
Managing the moisture content of the infield skin on a day-to-day basis would be what I consider the most difficult, yet strategic task for providing a top notch playing surface. In this paragraph, I discuss practices for the highest levels of play that I have encountered from major league facilities and national teams down to our oldest age groups for inter-city all-star programs. Moisture content of the infield skin is what provides a resilient playing surface, yet binds the blend together to provide stability. Watering an infield is somewhat similar to irrigating turfgrass – evaporation from the infield skin is proportional to heat, sunlight, humidity and wind. When preparing an infield, the amount of water we use on calm, overcast days with temperatures around 18°C is much less than 32°C windy, sunny days. The real trick is to moisten the sub-base (infield soil from 1/2" to 4") and keep it consistently at this level (you'll have to "read" your own infield).

Quick Tip. Sub-surface irrigation operated by a gate valve with rapid speed turf rotors will provide water to the skin without the cost of labour involved with hand watering.

This is what enables the field to perform well. Light surface watering is simply to moisten the conditioner and help seal in sub-base moisture.

Surface Preparation

The concept is simple – spike drag and cocoa mat to finish. In my opinion, this process actually has little to do with how the field plays or performs. To truly provide an optimum surface, the critical inputs are material selection, use of conditioners and moisture management. No matter how well the surface is prepared, without fulfilling these criteria, the infield will not perform to the highest standard. Timing is however, very important. When spike dragging, finding that optimum time when the field is dry enough for spiking, but before it begins to set up is key. This allows proper scarification of the top 1/4". Drag matting provides the finished playing surface.



REIST INFIELDER

72' width • Floating clod breaking pulverizer roller & leveling bar • 6 section packer roller, reduces skidding during turns & comes with a **5 YEAR WARRANTY**
Also features the first in spring loaded wing brushes
OPTIONAL 50 gallon water tank & pump
The **BEST WARRANTY** in the industry.



REIST AERASEEDER

Comes in widths of 48", 72" & 96"
With the largest seed box capacity
The 72" will give you over 1700 perforations per square yd • The base unit comes with front cone spike or knifing tine roller and a solid rear packer roller
Seed is distributed through our ground drive mechanism
OPTIONAL rear cone spike or knifing tine roller



Visit our website www.ReistIndustries.com
to preview a video presentation of our equipment.

1-877-467-3478

Infield Performance

Managing infields – how does this relate to impact absorption, traction, footing, stability and enhancement of the game? **Water is the key resource when it comes to the performance of an infield.** An infield may be designed properly utilizing a quality blend, infield conditioners incorporated, topdressed on the skin, and the surface properly spike dragged and matted. But without water, the infield will still not provide a safe surface for athletes to perform or enhance the game.

Penn State research identifies infields with 5% moisture content as having a GMAXX in excess of 300 (remember, over 200 is considered high injury potential). Infields with 23% moisture (a properly watered field) had readings of 140. We reduce by half the surface resiliency by the proper application of water. As discussed previously, excessively firm playing surfaces leave athletes at a higher risk for both acute and chronic injuries as the

forces are returned to the athlete as opposed to absorption by the field. Furthermore, the majority of baseball injuries are generated by ball strikes. Improperly managed infields can lead to a serious risk from inconsistent ball bounces at high speeds. At top levels of play, the ball can be fielded at speeds exceeding 80 miles per hour. I have witnessed some serious facial injuries due to an unexpected bounce of the ball. Water provides the consistency in ball response that allows fielders to become comfortable and confident and enables them to play the ball much more aggressively.

Footing, stability and traction affect an athlete's performance in the same fashion as turfgrass does in conjunction with field sports. The "tightness" of the infield enables both runners and fielders to stop, start, change direction, plant and make throws. An infield with little moisture not only plays hard, but becomes brittle, unstable and may "blow out" when force is applied by an athlete.

Conclusion

We, as sports turf managers, know the important role water plays in athletic field management programs. In contrast to ornamental turf areas, **water plays a very vital and functional role in providing safe, durable athletic fields that enhance the games of our intended users.** There are many more variables in managing athletic fields than simply maintaining healthy turfgrass. I feel it is our responsibility as sports turf managers to improve field performance and increase awareness to all involved while striving to minimize the injury risks associated with athletic competition. It is also our responsibility to use all available research and resources to minimize the mismanagement of water at our facilities.

I'd like to leave everyone with a final thought: I've never seen an injured golfer carried off the course, or chronically injured, due to poor playing conditions. ♦

~ Tim Ernst, Former Supervisor of Sports Turf, City of Kitchener



Every game needs its own strategy

We give the same expert advice, industry-leading technology and reliable service to every one of our clients — but that doesn't mean we think you're all alike. We know that the needs of a sports field manager are not the same as a golf superintendent's, so why should your turf solutions be?

Based on your use-specific requirements, we provide everything you'll need to create safe and attractive playing surfaces. Whether you care for your turf yourself or want us to, we have the nursery sod, brand name products, specialized equipment and techniques to help you do so. Sure, we're specialists in golf and athletic turf, but more importantly, we know how many different ways it will be used. **Call us today for customized turf solutions.**



mountainview
GOLF & ATHLETIC TURF SPECIALISTS

1 (800) 260-5922
mountainviewturf.com

OVER 25 YEARS OF RELIABLE SERVICE

Proud supplier and user of these top brand names:



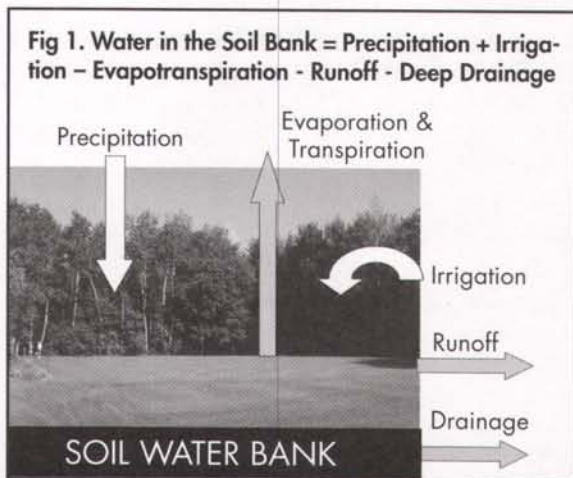
WATER IN THE BANK

TREATING SOIL MOISTURE LIKE MONEY IN THE BANK CAN PROVIDE A SIMPLE TOOL FOR IRRIGATION MANAGEMENT

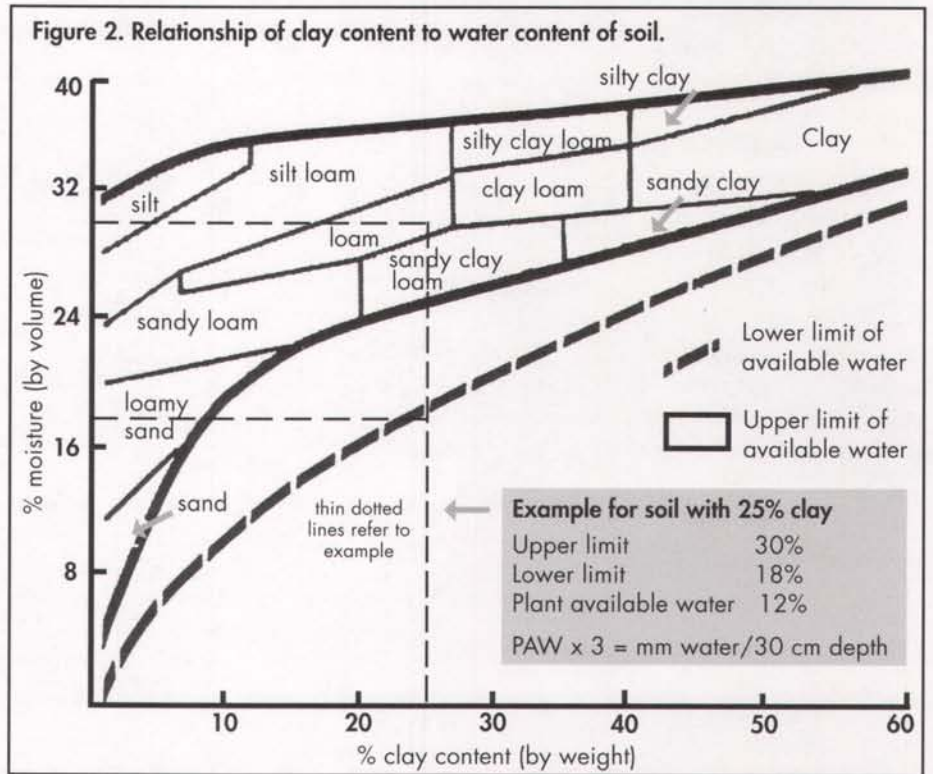
Water in the soil can be treated in the same way that money is managed in a bank account. This simple approach can be used to guide your daily decisions on irrigation, or to provide a rational basis for setting longer-term policies regarding water restrictions during periods of water shortage.

In this approach, the deposits to the soil water account are made by precipitation or irrigation. Therefore, it's necessary to know the amount of precipitation that falls and to calibrate your irrigation system so that amounts of water applied per hour are well known. Withdrawals from the water bank account are caused by evapotranspiration, runoff or drainage below the root zone. Just like our bank account, we'd like to minimize these withdrawals as much as possible (Figure 1).

We want to keep a satisfactory balance in the soil water bank so that the turf growing on this soil is not suffering from unhealthy water stress.



How do we decide what is a "satisfactory balance" of water in the soil? First, the texture of the soil must be determined by sampling and submission to a soil testing laboratory or by consulting a soils map. Each soil type has an upper limit to its water-holding capability when all the soil pores are full. There is also a lower



limit to the availability of soil water to plants – when the moisture content is low enough that the water is held very tightly in the smallest soil pores and roots cannot extract it. The difference between the water content at the soil's upper limit and the content at its lower limit of availability to roots is the *plant available water* or PAW. Typically, light sandy soils would have 20-25 mm of available water per foot of root zone, while the PAW for loams would be 40-45 mm per foot and 25-30 mm per foot for clays. Note that clays

can have the greatest total soil moisture, but they don't have the biggest PAW because they keep much of this water in their very small pores, out of reach to plant roots. To estimate the upper and lower limits of PAW, it is necessary to know the clay percentage in the soil on your sports field (see Figure 2).

The second thing to decide is what fraction of the PAW can be used up before the turf begins to suffer stress. Experience suggests that it is best to keep the available water above the 50% mark. After a little practice with this idea and your own observations of turf behaviour, you might adjust this percentage to satisfy your own needs.

Let's illustrate these ideas with an example. We'll choose a light soil with a PAW of 24 mm per foot of rooting and assume a 1-foot rooting zone. We'll assume that we have 17 mm in the bank on Day 1, which means the account is 71% full ($17/24 \times 100 = 71\%$). On Day 2 there is warm, sunny, dry weather causing a withdrawal of 5.5 mm due to evapotranspiration from the turf and soil. An estimate of daily ET can be obtained from Table 1 and Table 2, from an on-site weather station that measures temperature, humidity, sunshine and wind; or from private companies that provide such information for turf management. Table 1 uses visual observations of four weather fac-

tors – sun, temperature, wind and humidity to give an estimate of pan evaporation (tech speak for evaporation from a water surface). Pan evaporation is adjusted to turf evapotranspiration by multiplying by a correction factor for plant species and time of the year (Table 2).

These data can be entered into a spreadsheet (Table 3). We can see that the percent available water at the end of Day 2 is only 48%. Taking the guideline mentioned earlier, that turf will start to suffer stress when the soil available water drops below 50%. Thus, we need to irrigate on Day 3. Knowing that the weather forecast is suggesting some light rain on Day 4, we cleverly apply only 12 mm (about 1/2 inch) of irrigation water. This partly re-fills the soil water bank to 73% and leaves

Table 2. Correction factors for adjusting pan evaporation to grass ET.

Month	Correction Factor
April	0.45
May	0.55
June	0.65
July	0.75
August	0.75
September	0.55
October	0.45

some room to store the coming rain. About 6 mm of ET also occurs on this warm, sunny, windy day (Table 4). On Day 4 we receive 10 mm of rain and lose only 1.8 mm of ET due to cool, cloudy and windy conditions.

Why did 1.7 mm of runoff occur on Day 4? At the end of Day 3, we had 17.5 mm in the soil water bank. On Day 4, we had a 10 mm rain deposit and a 1.8 mm

Table 1. Estimators for pan evaporation based on observed weather conditions.

Sunshine	One pm weather observations for:			Estimated Pan Evaporation (mm)
	Temperature (C)	Humidity *	Wind**	
Full	Greater than 23	Low	High	8.0
Full	Greater than 23	Low	Low	7.5
Full	Greater than 23	High	High	7.0
Full	Greater than 23	High	Low	6.5
Full	Less than 23	Low	High	6.5
Full	Less than 23	Low	Low	6.0
Full	Less than 23	High	High	5.5
Full	Less than 23	High	Low	5.0
Cloudy	Greater than 23	Low	High	5.0
Cloudy	Greater than 23	Low	Low	4.5
Cloudy	Greater than 23	High	High	4.0
Cloudy	Greater than 23	High	Low	3.5
Cloudy	Less than 23	Low	High	3.5
Cloudy	Less than 23	Low	Low	3.0
Cloudy	Less than 23	High	High	2.5
Cloudy	Less than 23	High	Low	2.0

* Low = clear sky, unlimited visibility; High = smog, haze, fog

** Low = leaves and small branches moving; High = tree tops moving

Tables 1 & 2 reproduced from *Understanding Turf Management*, R.W. Sheard, 2005

ET withdrawal, for a net income of 8.2 mm. Therefore our bank balance should be $17.5 + 8.2 = 25.7$ mm. But our soil has an upper water holding limit of just 24 mm, so $25.7 - 24 = 1.7$ mm must run off, and the soil bank is left 100% full at the end of Day 4.

The loss of 1.7 mm of rain to runoff can be used to illustrate an important point. If we had irrigated to completely refill the soil reservoir on Day 3, we would have lost much more of the natural rainfall to runoff. Therefore the practice of replacing yesterday's ET by irrigating every day will not make best use of natural rainfall.

In an experiment on a simulated golf green at the Guelph Turfgrass Institute, we found daily irrigation to replace ET used about 25% more water over the growing season than irrigation when the available soil water bank became 50% empty.

To finish a week on the spreadsheet (Table 5), Day 5 is cool and sunny (ET = 3.5 mm); Day 6 is cloudy and humid (ET = 2.5 mm); then hot, sunny, windy and humid weather arrives on Day 7 (ET = 5.0 mm).

Now we find that we are approaching 50% available water in the bank again and need to be planning another deposit by irrigation. Even though our week's weather has contained some rain and some cloudy or cool days, turf on this soil could not remain stress-free if regulations permitted, for example, only weekly irrigation. When we run similar simulations for loam soils (recall that loams have the highest available water capacity of all soil types), we often still cannot keep them stress-free with only weekly irrigation in the summer.

In summary, treating soil moisture like money in the bank can provide a simple tool for daily irrigation management and



Sports Turf Association 19th Annual Field Day

SEPTEMBER 21, 2006

Ridley College, St. Catharines, ON

Info: (519) 763-9431

www.sportsturfassociation.com

see page 2 for further details...

See you at Ridley!

Table 3. Example Spreadsheet.

Day	Rain	Irrigation	ET	Available Water	Percent Available	Runoff or Drainage
1				17 mm	71%	
2	0	0	5.5 mm	11.5 mm	48%	0

Table 4. Example Spreadsheet Continued.

Day	Rain	Irrigation	ET	Available Water	Percent Available	Runoff or Drainage
2	0	0	5.5 mm	11.5 mm	48%	0
3	0	12 mm	6.0 mm	17.5 mm	73%	0
4	10	0	1.8 mm	24 mm	100%	1.7 mm

Table 5. Example Spreadsheet Continued.

Day	Rain	Irrigation	ET	Available Water	Percent Available	Runoff or Drainage
4	10	0	1.8 mm	24 mm	100%	1.7 mm
5	0	0	3.5 mm	20.5 mm	85%	0
6	0	0	2.5 mm	18 mm	75%	0
7	0	0	5.0 mm	13 mm	54%	0

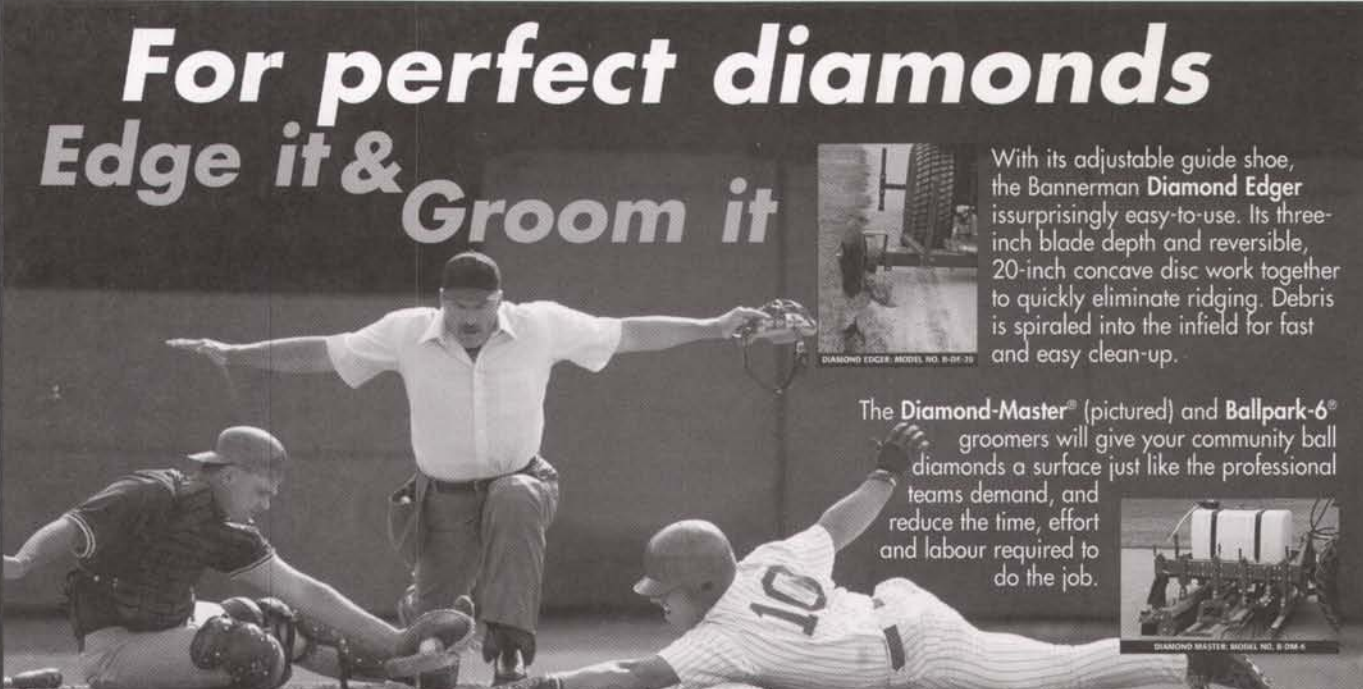
a simple way of providing rational advice to policy makers who are dealing with water regulations. Such analyses suggest that daily irrigation to replace yesterday's evapotranspiration is not the most efficient water management procedure. This keeps the soil water reservoir too full and causes unnecessary losses of natural rainfall by runoff or drainage.

On the other hand, it is often not possible to keep turf fields in top quality, stress-free shape when irrigation is restricted to weekly intervals during the summer. There is a "happy medium" somewhere between these two limits. Turf managers can apply the principles of water budgeting described in this article to utilize an allotment of water in the most efficient way. This approach, rather than the imposition of a fixed time interval between allowed irrigation events, could have a positive impact on sports turf health during the summer season. ♦

~ Prof. Terry Gillespie, Department of Land Resource Science, University of Guelph

For perfect diamonds

Edge it & Groom it



With its adjustable guide shoe, the Bannerman **Diamond Edger** is surprisingly easy-to-use. Its three-inch blade depth and reversible, 20-inch concave disc work together to quickly eliminate ridging. Debris is spiraled into the infield for fast and easy clean-up.

The **Diamond-Master**® (pictured) and **Ballpark-6**® groomers will give your community ball diamonds a surface just like the professional teams demand, and reduce the time, effort and labour required to do the job.

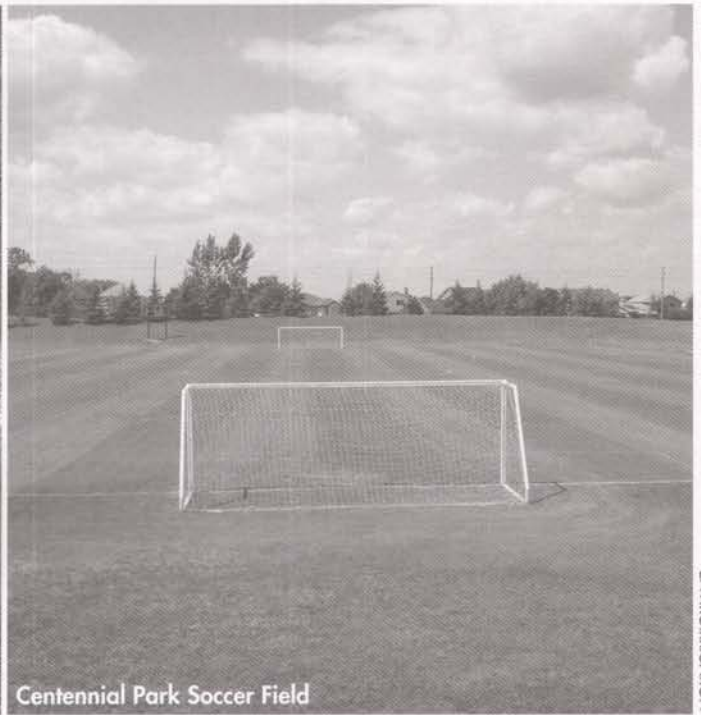
41 Kelfield Street, Rexdale, Ontario, Canada M9W 5A3
 CANADA 1-800-325-4871 USA 1-800-665-2696
 Email info@sportsturfmagic.com www.sportsturfmagic.com

BanNerman

THE HOME OF SPORTSTURF MAGIC



McNally Street Park Soccer Field



Centennial Park Soccer Field

ENVIRIRRIGATION

YOU CANNOT MANAGE WHAT YOU CANNOT MEASURE

MANY IN THE INDUSTRY HAVE ENDORSED THE SWAT™ CONCEPT AS THE STANDARD WATER CONSERVATION METHOD

The *Irrigation Water Efficiency Pilot Study* was commenced in July, 2005 to evaluate a weather based computer controlled irrigation system by utilizing a SWAT™ technology controller - Smart Water Application Technologies™. An Irrigation System Assessment and Irrigation Water Efficiency Assessment were completed to determine the operational performance, identify any deficiencies and calculate on-site water usage of existing irrigation systems. Data collected included monthly water meter readings, irrigation schedules, daily evapotranspiration rates (ET), turf conditions and soil moisture.

Two irrigated sports fields within the City of Guelph were chosen for the study, Centennial Park soccer field and Hastings Stadium baseball diamond. Centennial Park soccer field was upgraded by replacing the existing conventional irrigation controller with a SWAT™ technology controller.

Two irrigated sports fields within the Town of Halton Hills were also chosen for the study, McNally Street Park soccer field

and Berton Blvd. Park soccer field. McNally Street Park soccer field was upgraded by replacing the existing conventional irrigation controller with a SWAT™ technology controller.

SWAT™ technology automatically adjusts controller run times throughout the season. These controllers relied on local weather stations to automatically calculate the need for irrigation based on daily and weekly evapotranspiration (ET) rates required by the sports field turf.

In order to compare SWAT™ technology to the previous conventional controller, conventional fields were designated the reference fields. For example, Berton's irrigation schedule was superimposed onto McNally Street Park to simulate the comparison of SWAT™ technology to a conventional controller. The Berton controller remained under the management of park staff and field notes were recorded to log changes in irrigation schedules. Using this method of comparison, McNally Street Park would have watered 43% more using the Berton Blvd. Park conventional controller schedule.

Summary

Although the adoption of SWAT™ technology has been slow, much of the irrigation industry has endorsed the concept as the standard method by which to conserve water. But technology itself without measurement will not be enough in order to calculate the rate of return. As a wise irrigation specialist once said: "You cannot manage what you cannot measure."

SWAT™ technology automatically adjusts controller run times throughout the season.

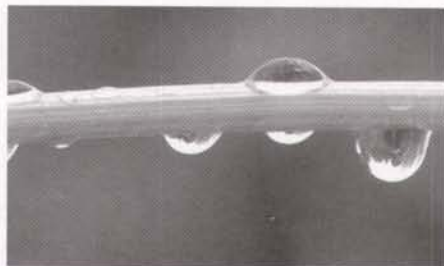
Acknowledgements

My sincere appreciation and thanks to Rakesh Mistry from the Town of Halton Hills and Ian Haras from the City of Guelph for their cooperation and vision to participate in a project that is on the forefront of what is soon to become common place irrigation technology. ♦

~ Gregory Snaith, P.Eng., President, EnviroIrrigation Engineering Inc.

WATER WORKSHOP SUMMARY

WATER RESTRICTIONS HAVE BECOME THE NORM IN MANY CANADIAN MUNICIPALITIES



Four key issues were presented at the workshop: 1) water use regulations and the rationale for water conservation; 2) the role of water in sports turf management; 3) effective irrigation; and 4) importance of good fields to the end user.

Water use restrictions have become the norm in many Canadian municipalities. Southern Ontario has a growing urban population that has a significant water demand. Peak water use demand occurs

during summer months and is attributable primarily to landscape irrigation although car washing and filling swimming pools also contribute to demand.

Climate change may lead to more regular periods of reduced water availability. Drought conditions both increase seasonal water taking and decrease surface water flow in streams and rivers which are used as the indicator to initiate water use restrictions through the Ontario Low Water Response mechanism. Municipal water systems also face the challenge of designing and maintaining systems that are capable of handling short term, peak seasonal water demands. Any disruption to the system, such as contamination and shutdown of well fields as has happened in Waterloo Region, further reduce system capacity to deliver water.

Water use is critical for maintaining

functional athletic turf. Dry, dormant turf does not have the recuperative potential, playability or cooling effect of actively growing turf. User groups clearly favour fields that are irrigated over non-irrigated fields. Most municipalities with field classification systems would typically rank their irrigated fields within the top level of classification. Turf managers are becoming more attuned to effective water management both through common sense use of the resource to optimize turf growth as well as through the use of current irrigation technology which provides a high degree of control over water application.

Where regulation and professional sports field management fail to meet is in the development of policy that takes into account effective field irrigation. There is a range of approaches to water restrictions but most are based on time and day of the



DOL TURF RESTORATION LTD.

Turf Drainage Solutions • Aeration (All Types)
Top Dressing • Overseeding • Automated Laser
Fine Grading of Tee Decks & Sports Fields • Golf
Course Renovations • Sports Field Construction
& Reconstruction

and official distributors of
Permaline™ • SportGrass™

P.O. Box 240, 2785 County Road 27
Bond Head, Ontario L0G 1B0

Tel: 905-778-1222 • Toll Free: 1-800-794-9664
Mobile: 416-791-3677 • Fax: 905-778-1333
Email: gdol@dolturf.com

MEMBER: STA, OGSA & ORFA

Your Sports Turf Specialists

The *Sports Turf Manager* isn't your only member resource. Why not visit



STA On-Line...
at www.sportsturfassociation.com

View a listing of all *Sports Turf Manager* articles from 1987 to the present. Go to the "newsletter" link and click on "cumulative index."

Contributions Welcome

Contact Lee Huether at the STA office if you are interested in contributing to the *Sports Turf Manager*. We appreciate feature-length articles, column ideas and newsworthy items. Updates on innovative research or equipment are also welcomed. This is a great way to both support your professional association and enhance your resume!



week restrictions such as odd and even date watering corresponding to the municipal address of properties as well as limited time frames during the day when irrigation may be applied. These approaches are easy to communicate to homeowners and enforce, but they do not take into account the needs of sports fields which are significantly different from home lawns. A more effective approach for sports fields may be to budget water use to a level sufficient for growth but permit longer periods of application which may be needed depending upon the capability of the irrigation system to deliver the appropriate amount of water.

Where do we go from here? A show of hands at the conclusion of the workshop indicated that only two people in the room felt that they had an effective say in water use policy making. It is incumbent on professional sports field managers to both use water responsibly as well as actively communicate the importance of water in an environmentally sustainable turf management system. Golf courses have responded to water restrictions by increasing water storage capacity through pond construction as well as investigating alternative

water sources. Most new housing developments require the construction of storm water ponds which could perhaps be integrated with sports field areas to provide an alternative source of irrigation water. In addition to producing potable water, municipalities also treat a significant quantity of effluent water. Although it would require significant infrastructure investment, integrating sports fields into municipal water treatment systems is worthy of further investigation and research.

It is not easy finding a place on the crowded agenda of municipal councils. Development of sports field water use policy that serves field needs as well as municipal demands to reduce water use is a challenge for sports field managers. Utilizing best management practices, staying current with regards to technology and cultural management techniques, investigating alternative water sources as well as communicating effectively with user groups and policy makers are all key in developing a water conservation strategy that will promote safe and functional sports fields. ♦

~ Rob Witherspoon, Director, Guelph Turfgrass Institute


ZANDER SOD CO. LIMITED
 Suppliers of **Top Quality Turf Products**

- * No. 1 Kentucky Bluegrass
- * Five Varieties of Bentgrass
- * Extreme Fescue


GOLPLA
 Turf Reinforcement System

(877) 727-2100 **(416) 364-5700**
www.zandersod.com


G.C. Duke EQUIPMENT LTD.
ISO 9002 REGISTERED

Paul Turner
 Sales Representative
 Cellular: (416) 566-0211

1184 PLAINS ROAD EAST, BURLINGTON, ON L7S 1W6
 Burlington (905) 637-5216 Toronto (905) 338-2404
 1-800-883-0761 • Fax: (905) 637-2009 • www.gcduke.com


Master's Turf Supply Ltd.

890 Fairground Rd. R.R. #4 Langton Ont. N0E 1G0
 Phone (519) 875-4094 Fax (519) 875-4095
 Website: mastersturfsupply.com
 email: mastersturf@uniserve.com

Make the Switch to Quality

Quality Seeds for Sod Growers, Golf Courses, Sports Facilities, Municipalities & Landscape Contractors


Quality Seeds

District Sales Managers
 Peter Coon • Cell: 705-715-3760
 John Konecny • Cell: 905-376-7044

1-877-856-7333 • 905-856-7333 • www.qualityseeds.ca



VANDEN BUSSCHE
IRRIGATION

RAIN BIRD

Hunter®

Vanden Bussche Irrigation
Milton 1.800.263.4112 • King City 1.866.703.KING
Scarborough 416.289.3635 • Delhi 1.800.387.RAIN
www.vandenbussche.com

Turf Care Agronomics

- **South-Western Ontario/Niagara**
Duncan Brewer
905.536.0357
duncanb@turfcare.ca
- **Mid-Western Ontario**
Craig McCutcheon
519.421.6593
craigm@turfcare.ca
- **Greater Toronto Area**
Mark Scenna
416.458.2396
marks@turfcare.ca
- **Eastern and Northern Ontario**
Bill Martel
705.627.3590
billm@turfcare.ca








Turf Care Products Canada
200 Pony Drive, Newmarket, Ontario L3Y 7B6
Tel: 905-836-0988 • Fax: 905-836-6442 • www.turfcare.ca



Supreme-Green™ TURF COVER

The **multi-purpose** turf cover ideal for natural turf environments such as baseball, soccer and football fields, etc.

BENEFITS

- accelerated seed germination • encourages root development • early spring green-up
- delays dormancy in fall • winter protection: reduces frost and ice damage • turf repairs
- available in any size

Coverttech
Fabricating Inc.

Buy Direct From the Manufacturer!
Call 1-800-837-8961
www.coverttechfab.com • sales@coverttechfab.com



The New Infield Pro®



This Changes Everything



Introducing the revolutionary Toro® Infield Pro. With its patent-pending Quick Attack System (QAS), operators can switch out most of the 17 front and rear mid-mount attachments in seconds. Realize the true potential of your equipment with the right tool for the job. The new Infield Pro with QAS, this changes everything.

www.turfcare.ca

TORO Count on it.

5716 Coopers Ave., Unit 6
Mississauga, ON L4Z 2E8
Ph: 905-890-6290
Fax: 905-890-5598

140 Milner Ave., Unit 24
Scarborough, ON M1S 3R3
Ph: 416-298-2101
Fax: 416-298-8758

2575 Delzotto Ave., Unit D
Gloucester, ON K1T 3V6
Ph: 613-822-1881
Fax: 613-822-2099

1110 Dearness Drive, Unit 13
London, ON N6E 1N9
Ph: 519-668-7664
Fax: 519-668-3722

TURF CARE PRODUCTS CANADA

200 Pony Drive, Newmarket, ON L3Y 7B6 • Tel: 905-836-0988 • Fax: 905-836-6442 • www.turfcare.ca