



**1. Name, location of facility.** CN Sportsplex, Moncton, New Brunswick.

**2. General information regarding the facility.** The Sportsplex is located on a 250-acre site where the main shops for the CNR were located until it closed its doors in the 1970s. There is now a state of the art four-ice arena along with six soccer and 10 baseball fields. There is also a new sport dome for indoor soccer and a driving range (privately owned) that is a great addition to the site.

**3. What types of sports fields are on site?** There are 10 ball fields and six soccer pitches. There is approximately 50,000 tons of sand, 20,000 tons of peastone and 5,000 yards of compost for soil amending.

**4. How many employees are involved with turf care at this facility?** There are 10-12 people who look after the site.

**5. How many acres of turf are maintained at this facility? How many acres of sports turf?** On 100 acres of land, there are 23 acres of sand based Kentucky Blue.

**6. What percentage of this acreage is irrigated?** All the fields are irrigated.

**7. What is the primary type of turf-grass?** Kentucky Blue.

**8. Is yearly overseeding part of your sports turf maintenance program?** We overseed the heavy traffic areas, goal-mouths, and wherever necessary for weed prevention.

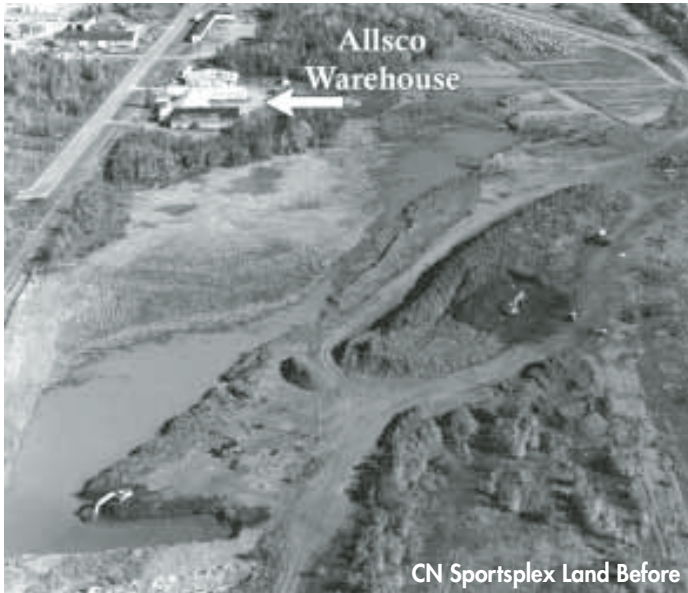
**9. How many times do you fertilize?** We fertilize three to four times a year using a PSCU product and some organic products.

**10. Do you aerate? Topdress?** We aerate and topdress every spring and fall.

**11. Has your municipality banned the use of pesticides?** We do not practice any pesticide use.

**12. Are community user groups involved or have they been involved in the construction/maintenance of this facility?** Soccer New Brunswick and Codiac Soccer look after bookings and field closures.

**13. How many hours per year are the fields permitted? Who permits them? Are the fields ever closed during the season to give them a rest? How much input do you have in the amount and timing of use?** The fields see 250–300 hours of play in a season. It is not too often that the fields get a rest but we sometimes cancel in a heavy rainstorm due to the amount of damage done to the turf when it is wet. I can make the call at any given time regarding closures. ♦



CN Sportsplex Land Before



CN Sportsplex Land After