

SPORTS TURF MANAGER

Volume 15, Issue 1
ISSN 1201-3765

is the official publication of the
SPORTS TURF ASSOCIATION OF ONTARIO
328 Victoria Road South, Guelph, ON N1H 6H8
Tel: (519) 763-9431, Fax: (519) 766-1704
E-mail: sta@gti.uoguelph.ca
Web: www.gti.uoguelph.ca/sta

2002 BOARD OF DIRECTORS

PRESIDENT

Paul Turner

PAST PRESIDENT

Jane Arnett-Rivers

VICE PRESIDENT

Andrew Gaydon

TREASURER

Rick Lane

SECRETARY

Bob Sheard

EXECUTIVE MANAGER

Lee Huether

DIRECTORS

Michael Bladon, Bill Campbell, Gordon Dol,
Roy Forfar, Chris Mark, Stephen Tolley

SPORTS TURF MANAGER

is published quarterly by the STA for free distribution to its membership. An annual subscription may be obtained for \$25/year. Please direct advertising inquiries to Lee Huether at the STA office.

EDITOR

Michael Bladon

PUBLISHER

New Paradigm Communications
R.R. #8, Owen Sound, ON N4K 5W4
Tel. (519) 371-6818, Fax: (519) 371-5789
E-mail: jblack@inetsonic.com

CANADA POST PUBLICATIONS MAIL SALES AGREEMENT No. 1461370

Postmaster: Please return undeliverable copies to the STA at 328 Victoria Rd. South, Guelph, ON N1H 6H8.

STA OFFICE HOURS

Lee Huether is in the office from 9:00 a.m. to 2:00 p.m. Tuesday through Friday. The office phone number is (519) 763-9431. At other times, a message may be left on the voice mail system.

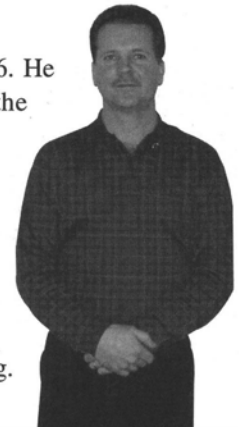
Please include the vital information of name, telephone number with area code, and time of calling. The office may be reached at any time by faxing (519) 766-1704 or via e-mail.

Meet Our New Board Member

STEPHEN TOLLEY JOINS THE STA TEAM

Stephen has 20 years of experience in the landscape maintenance and construction industry, 11 of them with the Town of Markham Parks Department, and most recently as the Grounds Supervisor at the University of Toronto at Mississauga. A graduate of the Ontario Diploma in Horticulture Program at the University of Guelph, Stephen was the recipient of the Award of Excellence from

OMAFRA in 1996. He is a member of the Ontario Parks Association, Landscape Ontario (Horticulture) and enjoys downhill skiing, golf, and, of course, backyard gardening.



GET INVOLVED WITH YOUR ASSOCIATION!

We invite you, our members, to participate on a variety of Association committees and experience the many rewards of volunteering. For details, please contact Lee Huether at the STA office prior to April 30th.



ASTM Standards Available

VALUABLE GUIDES FOR SPORTS TURF MANAGERS

The following standards are available from the American Society for Testing and Materials .

- *Standard Guide for Construction and Maintenance of Skinned Areas on Sports Fields*, Guide F2107-01, \$30 US, and

- *Standard Guide for Fences for Ballfields and Other Sports Facilities*, Guide F2000-00a \$25 US.

For further information or to order, visit the ASTM website at www.astm.org or telephone (610) 832-9585.

STA Membership Fees

Visa & Mastercard Accepted

Thank you to all members renewing in 2002! Invoices for membership fees will be mailed at the end of March and are due and payable on or before May 1. Please take a moment to verify your contact information as it appears on the memo accompanying your Membership Invoice. The Membership Roster is compiled from this information entered in our database. For any questions, please contact Lee Huether at the STA office.

Please Note: Opinions expressed in articles published in *Sports Turf Manager* are those of the author and not necessarily those of the STA, unless otherwise indicated.

Words of Wisdom ...

Anyone who stops learning is old, whether at twenty or eighty. Anyone who keeps learning stays young. The greatest thing in life is to keep your mind young.

— Henry Ford



MEMBERSHIP PLAQUES

Now available!

Sports Turf Association Display Membership Plaque in executive engraved walnut. **\$50 plus S&H.** To order, contact Lee Huether at the Sports Turf Association office.