

SUPER Conference!

If you were in Tampa for the 12th Annual STMA Conference & Exhibition, you KNOW what a huge party it was! But just in case you were not among the crowd - here's a little taste of what you missed.

The weather on Wednesday was great, perfect for golf and for the tours. With 225 people going on the Super Bowl game and practice fields tour, the hotel lobby "staging area" for loading the buses was filled with STMA people. The sound level kept growing with all the conversations as people connected with old friends and made connections with new friends.



family reunion!

The Wednesday night first time attendees reception was a half hour casual get together that included a welcome and the introduction of the officers and board members. Then all of this group walked to the other side of the hotel to open the welcome reception. This was a really fun time. The bars and food stations were strategically placed around the ballroom so you could sip and munch your way around the room, visiting all the way. Magician Joe Cole mingled with the crowd and worked his magic up close and personal throughout the evening. It was after 10 pm before the crowd thinned out.

I'm not sure if the conversations kept going all night or not, but starting bright and early Thursday morning, there was plenty of networking going on over coffee and the continental breakfast and as the group moved into the general session. A fire alarm sounded to move the group to lunch. The false alarm prompted some great remarks about the "hot" topic and speakers that were "really smoking."

With Lee Roy Selmon scheduled to come directly to

the hotel from an out of town recruiting trip, all of the staff members were on the lookout for him. We asked the hotel personnel to keep an eye out for him, too. The giant spy operation was so effective, he was literally ushered from the hotel front door to the speakers platform.



Special thanks to Lee Roy and to Bucky Dent for their great presentations and for proving once again that nice guys can be successful in professional sports.

Our Trade Show was a HUGE Success this year! We had a record 217 booths representing 131 companies - AND - next year promises to be even bigger!

Thanks go to Awards Chair, Tim Moore, CSFM, on the great double screen presentation he put together to introduce the Award Winners. As one of the Field of the Year award recipients told us, to see your field on the screens, hear the announcement about your program and go to the front of a packed room to receive the award to the applause of your peers, is one truly awesome experience.

There were so many other "great moments" the hum of sharing in the round-table discussions, the super feedback from the Sunday tours, all the parting comments of "See you next year!"

So make your plans now for the 2002 Conference & Exhibition in Las Vegas. Just call for details!

PROUD TO SUPPORT STMA

TORO www.toro.com

SPORTS TURF MANAGER

Official Newsletter of the Sports Turf Managers Association

1375 Rolling Hills Loop
Council Bluffs, IA 51503-8552
712/366-2669, 800/323-3875
(FAX) 712/366-9119

(e-mail) SportsTMgr@aol.com
(world wide web)

www.sportsturfmanager.com



Volume XIX Number 1
January/February 2001

OFFICERS

President

Rich Moffitt

Moffitt and Associates

President-Elect

L. Murray Cook

Global Stadium Services

Immediate Past President

Stephen Guise

Marina Landscape, Inc.

Commercial Vice President

Lynda Wightman

Hunter Industries

Secretary

Tim Moore

M-NCPPC, Wheaton Maint. Facility

Treasurer

Bob Campbell

University of Tennessee

BOARD MEMBERS

Mark Razum

Colorado Rockies

Mike Andresen

Iowa State University

Dave Rulli

Jefferson County Stadium

Mike Trigg

Waukegan Park District

Monty Montague

TurfcO/National

Dr. Tony Koski

Colorado State University

NATIONAL HEADQUARTERS

Executive Director

Steve Trusty

Communications Director

Suz Trusty

NEWSLETTER EDITOR

Stephanie Watts

Trusty & Associates

TECHNICAL EDITOR

Dr. Gil Landry, Jr.

The University of Georgia

Sports Turf Manager is a publication of Sports Turf Managers Association (STMA). It is published bi-monthly and is free to STMA members. Sports Turf Managers' goal is to promote the mission of the association by providing a channel for communication between the representatives of the board and its constituency. STMA is not responsible for the opinions expressed in this publication. Address changes, advertising, photographs, and editorial inquiries should be directed to the executive offices. © 2001 Sports Turf Managers Association. All Rights Reserved.

President's Message

Are You Energized?

by Rich Moffitt, President

Wow! What a Conference. The Tampa meeting drew record numbers of attendees, presenters, educators, exhibitors, and scholarship and award recipients. It was networking at its best, with conversations flowing on the tour buses, on the trade show floor, during breakfast, lunch, breaks and the receptions, and before and after sessions in the hallways, in the elevators, on the escalators, by the pool, on the decks and balconies, in the lobby and in the sports bar.

As the Super Bowl drew closer, athletes, sportscasters and celebrities from across the world gathered in the Tampa Marriott Waterside, adding to the atmosphere.

Many Conference attendees back in their home towns watching Super Bowl XXXV could say of Raymond James Stadium, "Yea, I was there and talked with George Toma about lots of the behind the scenes details."

I was energized by the friendly, welcoming atmosphere, by the free and easy sharing of information, by the friendships made and friendships renewed. This is a great industry, a great group of highly dedicated people who truly want to provide THE BEST sports surfaces for all levels of play.

Thanks to all of you who attended. Your participation made the Conference even better. And, while things are still fresh in your mind, please share any suggestions or comments you have that will make next year's Conference (January 16 - 20, 2002, in Las Vegas, Nevada) even bigger and better. Just call, fax or e-mail your input to Headquarters, to me, or to any of the STMA Board Members. It will be welcome and much appreciated.

And, talking about input, by now you should have received the survey sent to all STMA members. Please, please, please, do take the time to fill it out and return it. Your input is essential in developing the path our association will follow as we move into the new millennium. We need to know what services you value most and how we can best deliver them to help you grow in your profession and your professionalism. Your association is stepping up to the big leagues and wants to earn most valuable player status.

Then, if you're energized, how about



Rich Moffitt

taking one more step and getting more actively involved in STMA at the Chapter or National level?

With 23 currently affiliated Chapters and more Chapters in various stages of development, lots of help is needed on the local and regional level. You might want to serve on Boards and Committees, to host or make presentations at workshops, meetings and other events or to help spread the word to others in the area. Interested? Chapter contact information is listed in the Chapter News section of this newsletter and on the STMA Web page. Or call Headquarters and they'll help you make connections.

On the National level, the STMA Committee Chairs have been appointed and are in the process of forming their committees. With the Strategic Plan Initiatives slotted for roll out, there is lots of interesting and exciting "stuff" going on, and more need than ever for YOUR help! Committees include: Category Committees with a focus on the unique concerns of those involved with sports fields used by professional teams, sports fields used at Colleges and Universities, sports fields used at other schools, sports fields used in parks and recreation systems, and the unique concerns of commercial affiliates, of students, and of those involved in teaching, research or extension. There also are these committees: Marketing/Public Relations/Communications, Membership, Education with sub-committees for conference education, other education, research, university relations, public affairs, and member services; Chapter Relations; Certification; and Technical Standards. And there may well be many more sub-committees evolving from these committees as the Strategic Plan moves forward.

Interested? Want to know more? Please contact Headquarters and they'll connect you with the other movers and shakers ready to get involved.

“A Sense of Belonging”

by George C. Trivett, Granite Falls (NC) Middle School

We all belong to a lot of different clubs and organizations. As a teacher, I belong to a national teachers group. As a coach, I belong to my state coaching association. As a sport turf manager, I belong to the STMA, PGMS, and the N.C. Turfgrass Council. But, like myself, many of us are able to say that we just belong. How many of us are really active and have that “sense of belonging?”

I have been a member of Sport Turf Managers Association since 1987. I read the magazine and the newsletter. I occasionally called other members for advice, but I really wasn't involved. In January of 2000 I underwent a dramatic change. I was fortunate enough to be a Field of the Year winner and given the opportunity to attend the National Conference in St. Louis. Unknown to me, I was also to receive the Dick Ericson award. Both of these were great honors, which were certainly two of the highlights of my life.

After arriving in St. Louis I met Steve and Suz Trusty for the first time. They both made me feel very

welcome and a part of our wonderful organization. Steve Guise was very helpful, as were many other members. But, this being my first conference, I was maybe too shy or unwilling to meet other people. But I was to be surprised to learn that in the Sports Turf Managers Association we are all family. It was amazing to see the number of people who were so open, warm, and willing to talk. I met Kevin Meredith who oversees the maintenance at The National Soccer Hall of Fame. We developed a special bond and friendship. I can't help but think my winning Field of the Year and our friendship gave him the impetus to enter his soccer fields which were the 2000 Fields of the Year. I left that conference with a new sense of awareness that what I do is important and meaningful.

Unlike most of the members of STMA, sports turf is only a small part of my profession. I am a physical education teacher, football coach and Athletic Director at a middle school. Sometimes in the teaching profession the rewards are hard to see and appreciate. But in the preparation of sports turf the rewards are immediate and gratifying. That is one reason my love for that part of my job is so special. After returning from St. Louis with two awards in hand, there were a lot of pictures and articles in local newspapers. This brought a great deal of attention to the STMA and to our facility.

We then hosted the 2000 N.C. American Legion Championship, which drew over 26,000 in 6 days. Everyone who came knew this field was a winner and saw the STMA name in the stadium. All of this made me proud to be a member of our Association. At that point I thought it could not be any better. But the 2001 conference was yet to come.

From the moment I walked into the hotel in Tampa, I knew once again this was a special group. There were “family members” in abundance. I immediately volunteered to help in the STMA office. It was hard work, but it was also extremely gratifying to be around so many dedicated and hard working people. Starting with the tour on Wednesday, it was now my turn to make people feel special and part of the family. I found the more you can talk to members, the more we all learn to share not only knowledge of our fields, but knowledge of our family and friends. The people in this group make us all feel as if we are on the same level. Ross Kurcab with the Denver Broncos made a statement that was very real and meaningful. He said, that “We should not look at each other and think of different levels such as professional, college, or other levels, but that

continued on page 5

**We've Got
GAME!**

A 60-year **tradition of excellence**
and a commitment to quality
personal service make
Harrell's a **winning**
solution for:

- Fertilizers
- Chemicals
- Amendments
- TURFACE®

Harrell's
Custom Fertilizers Worldwide

Call 1-800-282-8007
Suppliers of Sports Turf Products in the southeast

Sports Turf Topic: Spring Conditioning

Cool-season turfgrass plants initiate large amounts of cell growth in the spring. Root growth begins first, as root cell development can occur at lower temperatures than top-growth.

If you followed proper fertility and cultural practices last fall, you will reap the benefits this spring. Cool-season turfgrasses develop roots in both the fall and spring. With cooler temperatures in the fall, you can make higher applications of nitrogen allowing the plant to grow roots and store additional carbohydrates without producing unwanted top-growth. In the spring, the turf will green up earlier and continue developing roots without large amounts of additional nitrogen.

Recent research has shown that the addition of biostimulants such as Launch® and Focus® during root development will enhance fertilizer activity.

Following summer stress, or the stress of activity on the sport fields, turf plants respond to the addition of plant hormones such as cytokinins and soil additives such as humic and fulvic acids. Stress recovery is aided and the plants are better able to store energy for the winter.

If you have a fall fertility program, the addition of biostimulants in the spring can help avoid flush growth and enhance root development. Refrain from making heavy applications of quick-release nitrogen in the spring. This can cause the plant to initiate a flush of leaf tissue, using energy needed for root development. Biostimulant application, combined with proper fertility practices, will allow turf plants to withstand the stresses of spring activities while still producing the root mass needed during the upcoming summer months.

**Condition your turf with Launch® and Focus® Turf Biostimulants.
For tough turf that won't buckle under. Even after the game.**



"I put Launch® up against another biostimulant I was using and the first thing I noticed was an extra two inches of root growth. Recently, the team held a grueling two-hour practice with the offense really pounding a concentrated area. Afterwards, I checked the turf and couldn't even see where they practiced."

**Dale Wysocki
Minnesota Vikings**

Always read and follow label directions.



**G pbi/GORDON
CORPORATION**
An Employee-Owned Company

1-800-821-7925

www.pbigordon.com/biostimulant_main.htm

"A Sense of Belonging"

continued from page 3

we are all turf managers". This is so true and is exactly why this organization is growing by leaps and bounds. Everyone I talked to was so glad to share information and willing to help in any way. It was especially nice to see the looks of happiness and pride on the faces of all the award winners at the banquet. It was just as wonderful to watch their expressions of surprise and accomplishment as it was to receive an award. From the tours to all the seminars and sessions, the networking and information that can be gained is immeasurable. I now take great pride in showing pictures and saying, "That is Rich Moffit, our President. That is Tim Moore, our Secretary and Awards chairman, and the list could go on. I am so proud to be a member of The Sports Turf Managers Association.

In conclusion, I encourage each member of STMA to make every effort to attend the National Conference. I promise it will have an impact not only on your job, but your life as well. Then you, also will have gained that "Sense of Belonging."



**For recent Job Listings - Check out the
"Members Only" Section of the website OR
call the STMA Jobs Hotline
(712) 366-1145.**

The Vision **RR** The Reality

rettler corporation

- Landscape Architecture
- Engineering
- Land Surveying
- Site Construction Management
- Maintenance Programming
- Site Maintenance

Our professionalism and dedication for safety first on any athletic field coupled with complete service and quality make us a valued partner for your project.

"Rettler Corporation Turns Visions into Reality"

3317 Business Park Drive .. Stevens Point, WI 54481 ..
Telephone .. 715.341.2633 .. Fax: 715.341.0431 .. Email: info@rettler.com

STMA 2000 Scholarship Recipients

Once again STMA received a record number of excellent and worthy scholarship applications. Once again, a record number of scholarships were awarded through the generosity of those participating in the 2000 Conference Silent Auction, Live Auction and Raffle, and through the designated funds of the Dr. Fred Grau memorial, and of The Toro Company on behalf of Dr. Jim Watson.

This funding provides not only for the actual scholarship awards as noted below, but also up to \$500 each to be applied toward the travel and lodging costs for the STMA Annual Conference. STMA provides complimentary Conference registration for each Scholarship recipient.

With the establishment of the SAFE Foundation, and beginning with the 2001 Scholarship program, the scholarship program will be administered through the Foundation, bringing tax benefits to those who make auction donations. Funds collected during the 2001 Silent Auction, Live Auction and Raffle, and the designated Grau and Watson funding will continue to support the scholarship program.

The presentation of the following Scholarships took place during the STMA Awards Banquet held on January 19, 2001, in Tampa, Florida.

Dr. Fred Grau Two-Year Program Scholarship: \$500
Thomas Gmelch - Walla Walla Community College

Undergraduate - Four-Year Program Scholarships
Dr. Jim Watson: \$1,000 - Matthew Money - Clemson University

STMA: \$750 - Jason Smith - Mississippi State University

Dusty Robinson - Texas A & M
Andrew Hollman - University of Wisconsin - Madison

Garlon Rainey - Auburn University

Graduate Scholarships

Dr. Jim Watson: \$1,500 - John Sorochan - Michigan State University

STMA: \$1,000

Deying Li - Iowa State University
Chad Follis - University of Missouri - Columbia



STMA Presents Founders Awards

Reflecting the standards set by STMA Founder Dick Ericson, the Dick Ericson Award is issued annually to an individual who is planning and executing the sports turf management of their facility, who is effectively leading their team to accomplish their goals in field maintenance, and who is positively impacting the sports turf industry.

The 2000 Dick Ericson Award recipient is By Hanson, Manager of Stadium Operations for the three stadiums of Jefferson County, Colorado. The three stadiums host the sports programs for the twelve High School teams.

By has set consistently high standards of job performance for himself and his staff. He has adopted techniques that make the most of existing resources and

constantly improves the management program through creative and innovative ideas. He works to increase professionalism within the sports turf industry. By is a strong supporter of STMA at both the national and Chapter levels. In addition, he has served as host for an annual Colorado Chapter golf outing that is a major fund raiser for the Chapter.

Reflecting the standards set by STMA Founder George Toma, The Toma Award is issued annually to an individual who is on a quest to reach their goals and is demonstrating what Toma has termed the "and then some" factor along the way. He continually stresses that it is possible to reach your highest goals - if you love what you do and give it your all - "and then some."

The 2000 George Toma Golden Rake Award recipient is Connie Rudolph, CSFM, Head Groundskeeper for Midway Stadium, St. Paul, Minnesota. The facility is home of the St. Paul Saints Minor League Baseball team and is used for numerous other

athletic events, for concerts, and for other community events. Connie exemplifies the "and then some" spirit in her constant dedication to providing excellent conditions for all field users. This was acknowledged nationally, as Connie and Midway Stadium were awarded the STMA 2000 Field of the Year honors in the professional baseball category.

In addition, Connie has demonstrated her commitment to the highest professional standards, achieving Certified Sports Field Manager status on January 1, 2001.



STMA Award Recipients (r to l): Mary Owen, Ross Kurcab, Connie Rudolph, Andy McNitt and By Hanson.

Reflecting the standards set by STMA Founder Dr. William H. Daniel, the Daniel Award is issued annually to an individual who has made significant contributions to the sports turf industry through research, teaching and/or extension outreach.

The 2000 Dr. William H. Daniel Award recipient is Dr. Andrew McNitt of Penn State University. Andy has focused his studies and research on athletic fields, soils, drainage and surfaces. He is extremely approachable and able to explain complex issues in a highly understandable manner whether working with a novice or an experienced professional. His contributions have, and will continue to, make a significant impact on construction and maintenance issues within the sports turf industry.

Reflecting the standards set by STMA Founder Harry Gill, the Harry C. Gill Memorial Award is issued annually to honor an individual for their hard work in the sports turf industry and to acknowledge their dedication to STMA.

The 2000 Harry Gill Award recipient is Mary Owen, Extension Educator & Specialist in the University of Massachusetts Turf Program. Mary is dedicated to the

continued on page 7

**YOUR "ONE-STOP SOURCE"
FOR AMERICA'S LEADING
BASEBALL SURFACES & SUPPLIES**



USED BY OVER 100 PRO TEAMS,
OVER 600 COLLEGES, PLUS THOUSANDS
OF TOWNS & SCHOOLS WORLDWIDE.
SPECIAL MIXES FOR INFIELDS,
PITCHER'S MOUNDS & HOME PLATE AREAS.

**REGIONAL INFIELD MIXES
AND RED WARNING TRACKS
FOR EVERY STATE & CLIMATE!**

PLUS INFIELD CONDITIONERS
TO IMPROVE EXISTING INFIELDS:

IF TOO HARD AND POORLY DRAINING!



THE REDDER, LESS DUSTY, MORE UNIFORM
SOIL CONDITIONER & DRYING AGENT
"SUPER-RED" FOR INFIELDS
"SUPER-GREEN" FOR TURF
FOR CONSISTENT INFIELD CUSHION
IN WET OR DRY WEATHER!

IF TOO SOFT & DUSTY!

STABILIZER®

FOR FIRM, YET RESILIENT, PLAYING SURFACES

TO QUICKLY DRY INFIELDS!

The Original & Most Absorbent is Now

NEW & IMPROVED GRANULAR

DIAMOND-DRY.



OVER 200 OTHER INFIELD PRODUCTS!

New Lower Prices!

FENCEGUARD

Safety Covers for Chain Link Fence
Now in 6 Colors!

HOLLYWOOD® BASES · FIELD MARKING MACHINES
TAMPERS · DRAG MATS · YANKEE® RAKES
WALL PADDING · WINDSCREEN · RAIL PADDING
BATTING PRACTICE COVERS · RAIN COVERS
PITCHER'S MOUND & BATTER'S BOX PADS
ON-DECK CIRCLES WITH TEAM LOGOS
PERMANENT FOUL LINES & MUCH MORE!

**FREE INSTRUCTIONAL BROCHURES
DISTRIBUTION CENTERS NATIONWIDE!**

800-247-BEAM

908-637-4191 / FAX 908-637-8421

PARTAC PEAT CORPORATION

KELSEY PARK, GREAT MEADOWS, NJ 07838

**"The best infield mix I've ever used."
— GEORGE TOMA**

STMA Presents Founders Awards

continued from page 6

development and maintenance of quality sports turf areas and has continually worked within the state, the region and the nation to introduce and enhance construction and maintenance programs for better and safer athletic field conditions. She has worked to promote the Sports Turf Managers Association personally and professionally. To name just a few of her many areas of involvement, Mary has served on numerous regional turfgrass boards, as a Director on the National STMA Board, as Chair of the national STMA Conference Education Committee, and on the STMA Certification Committee.

The 2000 President's Award was issued to Dr. Gil Landry, with the inscription, "In grateful recognition for your dedication and service to the Sports Turf Managers Association and the sharing of knowledge that exemplifies the STMA Mission Statement." As Professor of Turfgrass Management, with the University of Georgia, he provides leadership in the development of statewide educational programs in turfgrass management. He serves as a frequent speaker on turfgrass programs regionally, nationally and internationally. He shares his expertise in print through magazine articles for various turf-related publications and serves as Technical Editor for the national STMA Newsletter.

Gil has held various positions on the national STMA Board, helping guide the Association through many challenges, and

served as STMA President in 1992 and 1993. He received the Harry C. Gill Memorial Award in 1995. He continues to support increased professionalism throughout the industry.

The 2000 Commercial Affiliate of the Year Award was issued to Textron Golf, Turf & Specialty Products in appreciation of the company's initiative on behalf of STMA and SAFE.

Honorary Life Membership was awarded to Dr. Henry Indyk of GSI Consultants/Turfcon, Somerset, New Jersey. Henry has served the turfgrass industry as an educator and mentor, first in his career at Rutgers University, and later in his role as consultant, always guiding growth toward a higher level of professionalism. His service as chair of the STMA Conference Educational program was instrumental in developing an industry-wide informational forum.

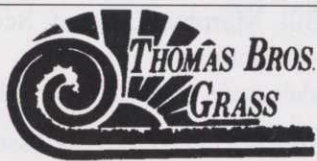


Dr. Henry Indyk & Rich Moffitt

Henry has held various positions on the national STMA Board, helping guide the Association through many challenges. He received the Harry C. Gill Memorial Award in 1994 and he served as the first Chair of the STMA Certification Committee, guiding the Certified Sports Field Manager program to introduction. Henry continues to serve on the committee to help guide its progress.

Ross Kurcab, CSFM, Turf Manager for the Denver Broncos, was named sportsTURF magazine 2001 Manager of the Year. The magazine cited the basis for the decision as the initiative and determination Ross showed in being the first person to complete the difficult requirements of certification, along with his work both locally and nationally in advancing his profession. Those words just begin to capture the knowledge, commitment, dedication and enthusiasm Ross exemplifies in his own position, and shares with all those around him and with the industry as a whole.

This industry owes a huge debt of gratitude to this excellent group of people. Congratulations to all!



A Turfgrass America Company
1926 Acton Hwy • Granbury, TX 76049
1-888-NEW GRASS
639-4727

GRASS

Ours **IS** Greener
On Your Side Of
The Fence!

SAND BASED
SOD

BAyr Root
Turf

42" Big Roll
SOD

Products & Services You've Trusted
For More Than **25** Years!!

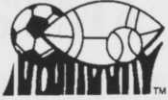


DIAMOND PRO

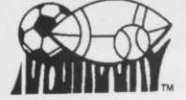
Professional Groundskeeping Products

1-800-228-2987

www.diamondpro.com



Sports Turf Happenings



Chapter Events

WELCOME to the four newly affiliated STMA Chapters: MO-KAN, Nebraska, New Jersey and Virginia. All of these Chapters were officially recognized at the STMA Annual Meeting held in Tampa, Florida, on January 20, 2001.

The Virginia Sports Turf Managers Association

For information on the Virginia Chapter or upcoming events, contact: Chapter President, Tim Swaim of Landscape Supply, Inc., Richmond, Virginia, by phone: (804) 675-3050 or via e-mail: cardscowboys@cs.com.

The Sports Field Managers Association of New Jersey

For information on the New Jersey Chapter or upcoming events, contact: Jim Gavigan, Lesco, at (732) 248-8979 or Eleanora Murfitt, Director, Township of Clinton Parks & Recreation Department, at (908) 735-5999.

MO-KAN Sports Turf Managers Association

The MO-KAN Chapter will hold their Spring Field Day on March 14, at the Lawrence Free State High School Sports Complex. For information on the MO-KAN STMA Chapter, or on upcoming events, contact: Trevor Vance at (816) 504-4271; Gary Custis at (816) 460-6215; or Jody Gill at (913) 681-4121.

Nebraska Sports Turf Managers Association

For information on the Nebraska Chapter or upcoming events, contact: Gregg Bostelman, City of Grand Island, at (308) 385-5426.

Keystone Athletic Field Managers Organization (KAFMO/STMA)

The Northwest Pennsylvania Athletic Field, Turf, & Ornamentals Conference will be held on Tuesday, March 20, 2001, at Allegheny College in Meadville, PA. This event is co-sponsored by KAFMO/STMA, Penn State Cooperative Extension and Allegheny College. Athletic Field Topics will include: Record Keeping with Technology, Eight Steps to an Easy Field Facelift, Soccer Goal Mouth Renovation, Poor

Directions Followed Well, and Sports Field Preventive Medicine. For further information on this event, please contact: Jeff Fowler at (814) 437-7607.

For information on the KAFMO/STMA Chapter or other upcoming events, contact: Dan Douglas, Reading Phillies Baseball Club, at (610) 375-8469, extension 212 or via the chapter e-mail address: kafmo@aol.com.

Tennessee Valley Sports Turf Managers Association

TVSTMA is planning a March meeting to be held at MTSU in Murfreesboro, Tennessee. Also in the planning stages is a June Meeting at the University of Tennessee in Knoxville, Tennessee.

For information on the TVSTMA Chapter or upcoming events, contact: Bill Marbet, Southern Athletic Fields, Inc. at (931) 380-0023 or (800) 837-8062.

The Sports Turf Managers Association of Arizona

The Arizona Chapter's Spring Kick Off Meeting will be held on Friday, April 20th, at ASU in Tucson. More details on this event will be announced soon.

For information on the chapter or other upcoming events, contact: Bill Murphy, City of Scottsdale Park, Recreation and Facilities Manager, at e-mail: bmurphy@ci.scottsdale.az.us or phone: (480) 312-7954.

Wisconsin Sports Turf Managers Association

The Wisconsin Chapter is planning a spring meeting at Miller Park, the new stadium of the Milwaukee Brewers. More details will be announced soon.

For more information on the Wisconsin Chapter or pending events, contact: Richard Miller, at (608) 756-1150.

Minnesota Chapter:STMA

The Minnesota Chapter is planning a Spring Workshop for early May. Their annual Minnesota/Iowa *continued on page 13*

OFFICIAL STMA CHAPTER SPONSORS

Gold Sponsor



JOHN DEERE

Silver Sponsors

Alpine Services, Inc.
PREMIUM SPORTS FIELDS

Hunter
The Irrigation Innovators

Welcome New STMA Members

WOW! Once again - we have a record number of new members - I believe it even beats the old record! SW

Steven Abajian
Commercial Grounds Maint., Inc.
Ventura, CA

Richard Alberti
Control Environ. Services
Centereach, NY

Andy Babbitt
City of Carrollton
Carrollton, TX

Tom Barrett
City of Aurora
Aurora, CO

Kevin Bevenour
Gettysburg College
Gettysburg, PA

Fred Bobson
Village of Pinecrest
Pinecrest, FL

Matthew J. Breijak
Pinckney Comm. Schools
Pinckney, MI

Benji Brye
Beacon Ballfields
Middleton, WI

Nicholas P. Butera
Babson College
Wellesley, MA

James Cleveland
Penfield School Dist.
Rochester, NY

Doug Cook
City of Roswell
Roswell, GA

Paul DeBruyn
City of Bettendorf
Bettendorf, IA

Jolenne Dimeo
Boise State University
Boise, ID

Blair Elliot
City of Aspen
Aspen, CO

James W. Fernandez
Chaminade College Prep School
St. Louis, MO

FlowtronEx PSI
John Swindle
Tampa, FL

Felipe Garcia
City of Flagstaff
Flagstaff, AZ

Ryan R. Gregoire
Ag Design, Inc.
Seville, OH

Ace of Diamonds Tour
Mel Lanford
Greensboro, NC

American Athletic
Timothy J. Horan
Jefferson, IA

Anthony Babineaux
Univ. of Louisiana/Lafayette
Lafayette, LA

Russ Baucom
Carolina Green Corp.
Indian Trail, NC

Mark Bishop
Peoria Park District
Peoria, IL

David W. Boggan
City of Homewood
Homewood, AL

Rodney P. Brewer
Sports Green
Newburgh, NY

Jeanette Bush
Purdue University
Hope, IN

Nick Campas
MST Consultants, Inc.
Rossville, KS

Patrick Coakley
Myrtle Beach Pelicans
Myrtle Beach, SC

Jamy Cook
City of Homewood
Homewood, AL

Jon DeWitt
Wesleyan School
Norcross, GA

Jesse Driver
Mid-Atlantic Turf, Inc.
Gaithersburg, MD

Tim Erickson
Ottawa Hills Local High School
Toledo, OH

Ferti Gator, Inc.
Ned Lips
St. Louis, MO

FMC Corporation
Jon McDowell
Lake Wales, FL

Glenmore Landscape Services
Glenn S. Moore
Mound Ridge, NY

Gregori International/LOKSAND
Christophe Leclerc
Miami, FL

Dan Adams
City of Aurora
Aurora, CO

Austin Anderson
Ferris State University
Big Rapids, MI

Larry Ballenger
Town of Carbondale
Carbondale, CO

Keith Bell
Gatesville, I.S.D.
Gatesville, TX

Eric Blanton
Packwood, WA

Philip Braselton
Student/Arkansas Tech Univ.
Wichita, KS

John Brooksbank
Xavier University
Cincinnati, OH

Seth Bussaglia
Foxboro Stad./New England Patriots
Franklin, MA

Joseph Cazeault
Noble & Greenough School
Dedham, MA

Billy Coates
County of Loudoun
Leesburg, VA

Casey L. Crockett
Fresno Pacific University
Fresno, CA

Michael DeCillo
DiCillo & Sons Landscaping
Wickliffe, OH

Eagle-Picher Minerals, Inc.
Dan Swartz
Reno, NV

Bill Fenn
Profile Products, LLC
Buffalo Grove, IL

Jason Fischer
Texas A & M University
Giddings, TX

Tony Fowler
The Toro Company
Orlando, FL

Steve Glossinger
RTM Sport, Inc.
Burtonsville, MD

Todd Guilliams
Embry/Riddle University
Daytona Beach, FL

Agronomic Resources
Michael T. Ayer
Brandon, FL

Ellis Austin
Carolina Green Corp.
Indian Trail, NC

Brad Barnes
City of McAllen
McAllen, TX

Jon Bengston
Bryant College
Smithfield, RI

Aaron Blatner
Naperville Park District
Naperville, IL

Dan Brazo
University of Notre Dame
Notre Dame, IN

Carl Brower
N. Carolina A & T State Univ.
Greensboro, NC

Richard G. Bussert
Skidmore College
Saratoga Springs, NY

Scott Chison
City of Aspen Parks
Aspen, CO

Columbus Turf Nursery
Daniel Huggett
Ashville, OH

Clark Curry
City of McAllen
McAllen, TX

David DiGregorio
City of Peekskill
Peekskill, NY

Eco Soil Systems, Inc.
Erik Gloff
San Diego, CA

Steve Ferguson
City of Seward
Seward, NE

Charlene Flanigan
Walla Walla Comm. College
Walla Walla, WA

Matt Gamble
Links Aerification Plus, LLC
Noblesville, IN

Seth Goodall
Student/Univ. of Connecticut
Storrs, CT

Scott Gunn
Florida A & M University
Tallahassee, FL

New members continued on page 16

STMA 2001 ELECTION RESULTS (and then some)

The slate of nominees for STMA Officer and Board of Director positions, a ballot for the election, and the official announcement of the annual meeting were mailed to all national STMA members on December 21, 2000.

This mailing also included an enclosure containing the photos of all the nominees, and of the returning Officers and Directors, along with their background information and vision statements. All ballots were to be received at STMA Headquarters by January 12, 2001.

Officer positions are for a one-year term. Up for election were the positions of: President Elect, Vice President Commercial, Secretary and Treasurer. According to the STMA Bylaws, the President Elect automatically moves to the position of President when the previous President's term has been completed. Also according to the STMA Bylaws, the President may be asked by the Board to serve a second one-year term. This request was made by the STMA Board, and President Rich Moffitt agreed to serve a second year as President in 2001. Other officers may run for a second one-year term. All officers serving in 2000 did decide to run for office again in 2001.

Category Board of Director positions up for election were: Category I, III and V. Board of Director positions are two-year terms. Directors may run for a second two-year term. Category I Director, Tom Burns, had completed his second two-year term. Category III Director, Dave Rulli, and Category V Director, Monty Montague, did run for a second term.

The results of the 2001 election were announced at the STMA Annual Meeting held on January 20, 2001, in Tampa, Florida. Those results are as follows: President Elect - L. Murray Cook; Vice President Commercial - Lynda Wightman; Secretary - Tim Moore; Treasurer - Bob Campbell; Category I Director - Mark Razum; Category III Director - Dave Rulli; and Category V Director - Monty Montague.

Serving the second year of their two-year term in 2001 are the following: Category II Director - Mike Andresen; Category IV Director - Mike Trigg, and Category VIII Director - Dr. Tony Koski.

Serving their second one-year terms are President Rich Moffitt and Immediate Past President Stephen Guise.

SAFE OFFICERS AND BOARD OF TRUSTEES ELECTED

The STMA Board of Directors officially elected the Board of Trustees of the Foundation for Safer Athletic Field Environments (SAFE) during the STMA Board Meeting held in Tampa, FL, on January 16, 2001. The Foundation is a 501(c)(3) corporation formed for the purposes as outlined in the SAFE Mission Statement: "To support sports field specific research, educational programs and environmental concerns to promote user safety."

The initial Board's length of service is staggered with one third of the Trustees serving a one-year, one third serving a two-year, and one third serving a three-year term. Subsequent Board positions will be three-year terms, establishing a two-

thirds annual continuity on the Board.

Serving a one-year term on the Board of Trustees are: Don St. Dennis, The Toro Company; Dr. Tony Koski, Colorado State University; and Dr. Jim Watson, retired. Serving two-year terms are: Bob Patt, City of Canton, OH; Mike Scaletta, John Deere; and Bob Campbell, University of Tennessee. Serving three-year terms are: Mike Schiller, Rolling Meadows (IL) Park District; Paul Pesci, Textron; and Monty Montague, Turfco Manufacturing/National Mower.

The SAFE Board met on January 16, 2001, in Tampa FL, to elect officers, establish committees and committee assignments, and to set goals. The Officers are: Chair - Mike Schiller, Vice-Chair - Monty Montague, Secretary - Bob Campbell, and Treasurer - Bob Patt. STMA Executive Director, Steve Trusty, automatically serves on the SAFE Board.

MORE CERTIFIED SPORTS FIELD MANAGERS

Congratulations to the following individuals who have recently achieved Certified Sports Field Manager (CSFM) status: Lee Hauserman, Gay Guthrie, Connie Rudolph, C. Tom Rudberg, Mike McDonald, Troy Smith, Tim Moore and Mike Trigg.



Southern Athletic Fields, Inc.

We Are Into

Red

SAF Coat is: Affordable
Great Percolation
Non-Abrasive
Superior Red Color

SAF Coat is a crushed, tempered shale stone that is light weight and easy to apply on skinned areas of infields.

1309 Mainsail Drive
Columbia, TN 38401

Email: saf@mulemix.com

Website: www.mulemix.com

931-380-0145 Fax

Call 1-800-837-8062 for More Information

DOC'S DUGOUT - An Inning From Our Past -

Dr. William H. Daniel - A Man with Ideas Ahead of His Time - Part III

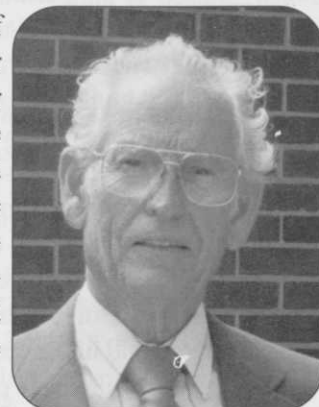
By Dr. Kent Kurtz - STMA Historian

Historically, the concept of the PAT System came in December of 1970 when Dr. Daniel watched a muddy football game being played in Oakland, California. In spite of the fact the field had internal drains under a sandy soil, excess surface water was still a problem. The questions were obvious - How can excess water be vertically removed from athletic fields?

This question was also being asked by those maintaining artificial turf because of the wet and slippery conditions associated with those surfaces during or after a heavy rain. Daniel's research began to find answers to these problems. In one laboratory experiment it was discovered that 6 minutes of suction on the root-zone was equal to 6 hours of natural drainage. The work continued with the first PAT field installed in the early 1970's on the football field at Goshen High School in Indiana. The technology developed at Purdue resulted in the design and installation of vacuum or suction pumps that are connected to the main drain lines, which moved water off the playing surface.

The PAT system controls the moisture content on its surface by using suction pumps to extract water from the field surface thus keeping the field firm. The two suction pumps are capa-

ble of removing 25,000 gallons of water from the field per hour (approximately 1 inch of rain per hour). The PAT field is flat since there is no need to construct a crown to remove excess surface water. The extensive drainage system located on the top of the plastic barrier and underneath the sand removes all excess water once the pumps are activated.



The Components of Early PAT Athletic Fields

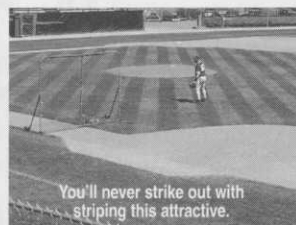
Fields were excavated to a depth of 16 inches. This procedure normally took about 10 days to complete and required the removal of approximately 4500 cubic yards of soil.

Four-millimeter plastic sheeting was installed on the bottom and sides of the excavation. This plastic liner extended to the surface and around the entire perimeter of the field and acted as a water barrier by allowing the excess moisture to be drained away or stored.

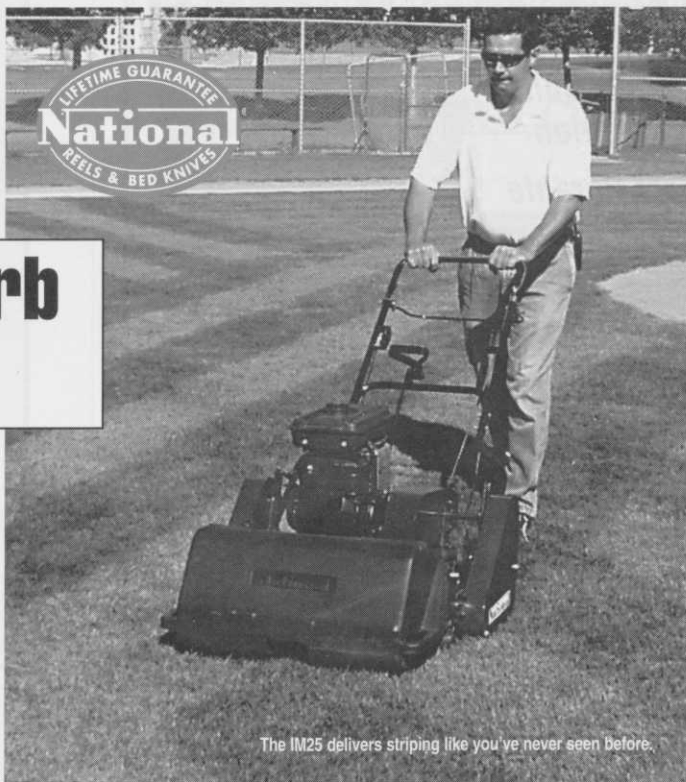
continued on page 12



Standard front throw basket.



You'll never strike out with striping this attractive.



The IM25 delivers striping like you've never seen before.

Drive Home Superb Field Striping

- Cut from 1/2 - 2" height of turf, 25" width
- Built-in back lapping device
- Handles Northern and Southern grasses
- Full metal rear-drive split roller system
- Front throw with polyethylene basket
- 6 and 8 blade reel option

Visit us online: www.nationalmower.com
or call: 1-888-907-3463



NATIONAL MOWER COMPANY

SINCE 1919 700 Raymond Avenue • St. Paul, MN 55114
Fax (651) 646-2887 Email sales@nationalmower.com

NATIONAL® is a Registered Trademark of National Mower Company

Nothing makes sports turf look better than a National. The Best Price. The Best Cutting.

DOC'S DUGOUT

continued from page 11

A series of two-inch and four-inch pipes were placed directly on top of the plastic liner. The two-inch pipes were laced with tiny slits and placed along the length of the field every 15 feet. The slits in the pipe were smaller than the size of the sand used in the root-zone. The entire drainage system was connected to one or two (in later versions) six inch line(s) which were attached to a series of valves that allowed the removal of water either by gravity or by the use of the pumps. The pumps were located in a pit off the playing field. Early versions of the system utilized two vacuum pumps to remove water while some of the later field installations had three pumps. Over 7000 linear feet of drainage pipe was used.

When the drainage pipes were in place, approximately 5,000 tons of specially selected medium-fine sand was placed over the pipe and liner. Sand selection is critical to the effectiveness of the root-zone. The sand must remain firm enough to withstand rugged play yet provide optimum conditions for good turf growth.

Over one mile of electric heating cable wire was buried beneath the field. The heating cable provides a dense, firm field for use while other fields are frozen. The heating system forced the grass to continue to grow until the end of the season.

The fields were then sodded with the proper grass for the climate.

The above are examples of some of the early PAT system components that were installed in the 1970's and 1980's. Moisture sensing, stronger plastic liners, more sophisticated drainage pipes, better irrigation systems, cleaner and better-sized sands and reinforcing fibers are used today in the later versions of the PAT system. In 1982 Dr. Daniel sold the business rights to PAT to Laurel Meade of Pueblo, Colorado and served as consultant to the program. The Motz Group located in Cincinnati, Ohio purchased all rights to the PAT system in 1994 and continues to install quality sports fields to this day.

KLAWOG®

A New Foundation for Sports™

- **Easy & Quick Installation**
- **Fast Durable Repairs**
- **The Professionals Product of Choice**

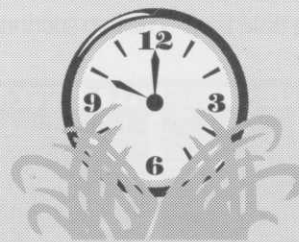


**Without
KLAWOG®**

**Under Your Feet, Your Mound and
Batter's Box ARE NOT COMPLETE!**

Discover The KLAWOG® Advantage Today!

Call **1-800-650-9322** for your nearest distributor.
www.klawog-klacon.com



TURF TIME

DEEP DRILL & DRILL/FILL AERIFICATION SERVICE COMPANY

WE CONTRACT WITH:
GOLF COURSES
FOOTBALL FIELDS
SOCCER FIELDS
OTHER TURF FIELDS
ALL NEW RIGS
EXPERIENCED CREWS
CUSTOMER ORIENTED

Call **TOLL FREE** today to schedule

877-388-8873 or
800-994-0004 (Calif.)

Chapter Events

continued from page 8

Chapter Clash is planned for July 13 and 14, 2001. The annual Tour on Wheels will be held on July 25, 2001. Further details on these events will be announced soon.

For information on the Minnesota Chapter or other upcoming events, contact: Ron Unger, Director of Parks & Recreation, City of Kasson, by phone at: 507/634-4165 or via e-mail at: ParkNRec@CityofKasson.com.

The Iowa Sports Turf Managers Association

The Iowa Chapter will be joining the Minnesota Chapter for the annual Clash on July 13 and 14, 2001. More details will be announced soon.

For information on the Iowa Chapter or upcoming activities, contact: Lori Westrum at The Turf Office at (515) 232-8222 (phone) or (515) 232-8228 (fax) or e-mail: Lori@iowaturfgrass.org.

The Colorado Sports Turf Managers Association

The Board is working on the 2001 calendar of events. For information on the Colorado Chapter or upcoming activities, check the website: www.cstma.org or call the CSTMA Chapter Hotline: (303) 346-8954.

Florida Chapter #1: STMA

For information on the Florida Chapter or pending activities, contact: John Mascaro at (954) 341-3115.

Southern California Chapter:STMA

For information on the Southern California Chapter or pending activities, contact: Ron Kirkpatrick at (858) 453-1755.

The Gateway Chapter Sports Turf Managers Association

For information on upcoming events or on the chapter, contact: Mark Jennings at (314) 983-5345 or Jim Anthony, Saint Louis University, St. Louis, MO, at: (314) 977-2956.

Indiana Chapter: STMA

For information on the Indiana Chapter or pending activities, contact: Terry Updike, B & B Fertilizer, at (219) 356-8424.

The Mid-Atlantic Field Managers Organization (MAFMO Chapter STMA)

The 2001 Irrigation Seminar will focus on "Troubleshooting Irrigation Problems." The date and location will be announced soon. For information on the MAFMO Chapter or pending activities, contact the Hotline: (410) 290-5652.

The Michigan Sports Turf Managers Association

For information on the Chapter or other pending events, contact: Rick Jurries, West Ottawa Public Schools, at (616) 738-6974 or check the chapter's website: www.mistma.org.

Midwest Chapter: STMA

The Midwest Chapter is hosting the Award Luncheon & Meeting March 6, 2001 at Northwestern University in Evanston, IL. Keynote Speaker is Randy Walker, Northwestern Head

Football Coach and Big Ten Coach of the Year.

For information on this Meeting or pending activities, call: Ted Baker, CSFM 847/681-2189 or the Chapter Hotline (847) 622-3517.

The Northern California Chapter of the Sports Turf Managers Association

For information on the Nor-Cal Chapter or pending events, contact Janet Gift at (530) 758-4200.

Ohio Sports Turf Managers Association

For information on the OSTMA Chapter or upcoming events, contact: Joe Zelinko at (800) 897-9714 or Boyd Montgomery at (419) 885-1982 extension 50, or the website: www.glstma.org.

The North Texas Sports Turf Managers Association

The NTSTMA will meet at the Gerald J. Ford Stadium on the SMU campus in Dallas, TX, from 8:00 AM to 3:30 PM on March 20. This will include educational sessions, details of the SMU maintenance program and a tour of the facilities.

For information on the North Texas Chapter or pending activities, contact: Kayla McAfee at (972) 234-6584, or Rene Asprien at (972) 647-3393 or check the website: www.ntstma.org.

continued on page 18

THATCH-MASTER 48" & 60" FINE TURF VERTI-CUT



1. Commercial quality fine turf verti-cut
2. PTO powered - 20 to 30 H.P.
3. Thin (.060) blades do NOT leave grooves
4. Extremely low maintenance
5. Fast

Turf Specialties, Inc.

320 THIRD STREET, S. W. * WINTER HAVEN, FL 33880
TELEPHONE: 800-201-1031

Field of the Year Award Recipients Honored

The Field of the Year Awards for 2000 were presented during the STMA Awards Banquet held on January 19, 2001, in Tampa, Florida, in conjunction with the annual conference. These Awards, presented for top maintenance of natural playing surfaces and support facilities in four major sports areas: baseball, softball, football and soccer, are the highest honor STMA bestows upon a facility.

Midway Stadium, St. Paul, Minnesota, earned the 2000 STMA Baseball Field of the Year Award in the Professional division. Accepting on behalf of the facility was Connie Rudolph, CSFM, Head Groundskeeper.

Midway Stadium is home field for the St. Paul Saints minor league baseball club. Besides the Saints, Midway Stadium plays host to the state high school baseball championship tournament, senior men's baseball, Legion baseball, high school and college level football, a semi-professional football team, a women's football team, soccer, and major national concerts.

McGill Field of Lebanon Valley College, Annville, Pennsylvania, earned the 2000 STMA Baseball Field of the Year Award in the College/University division. Accepting on behalf of the facility were Kevin Yeiser, Director of Grounds & Athletic Facilities, and Keith Evans, Athletic Field Foreman.

McGill Field, the cornerstone of the Lebanon Valley



Field of the Year recipients (l to r): front row - Craig Potts, Texas A & M University; Mike MacWithey, Apopka High School; Connie Rudolph, CSFM, Midway Stadium; Frank Worley, Toccoa Little League; Kevin Yeiser, Lebanon Valley College; back row - Leo Goertz, Texas A & M University; Lance Tibbets, ; Steve LeGros, Hersheypark Stadium; Eric Adkins, CSFM, Northwestern University; Randy Stoneberg, Northwestern University; Kevin Meredith, Wright National Soccer Campus; Keith Evans, Lebanon Valley College

College sports complex, was unveiled in the spring of 1999. During the 2000 season, McGill Field hosted spring and fall college games and practices along with local high school, American Legion, and teener games for a combined total of 131 on-field events.

The Senior League Field in Doyle Street Park of Toccoa, Georgia, earned the 2000 STMA Baseball Field of the Year Award in the Municipal/Parks and Recreation division. The field is owned by the City of Toccoa and maintained by the Toccoa Little League volunteer work force headed by Frank Worley. Worley accepted on behalf of the facility.

The field was constructed in 1954. The volunteer maintenance regime intensified in 1993 when Worley's vision of what could be accomplished inspired the extra effort to turn that vision for a great field to reality. The field now hosts 135 spring and fall practices, 142 regular summer games, and Tournament play during its nine-month season.

The Apopka High School Softball Complex, Apopka, Florida, earned the 2000 STMA Softball Field of the Year Award. Accepting on behalf of the facility was Mike MacWithey, Head Coach.

The Apopka High School Softball Complex is the result of a combination of dedication, commitment, donations and volunteer effort. Team members, their parents, a large number of local supporters, the Apopka High School personnel and the Orange County School Board join together to produce a field that consistently meets top standards and which the entire community views with pride.

HersheyPark Stadium, Hershey, Pennsylvania, earned the 2000 STMA Soccer Field of the Year Award in the Professional division. Accepting on behalf of the facility was Steve LeGros, Stadium Turf Specialist.

HersheyPark Stadium is the home field of the Hershey Wildcats, a professional soccer team and member of the "A" Professional Soccer League. The Wildcats use the field from April

continued on page 15

Jaydee Drive Liner



The Jaydee Drive Liner is a self-propelled riding line marker. The 35-gallon paint tank carries enough marking material for a complete game field, or several practice fields. The 2-gallon flush tank cleans the discharge lines for work breaks, travel, or overnight. The center or side-mark spray shields are always operator-visible. A nearly zero turning radius reduces or eliminates back and turn maneuvers.

Jaydee Equipment Company

202 East Joliet Highway, Box 278
New Lenox, IL 60451-0278
TOLL FREE: 1-800-443-3268

Circle 1125 on Inquiry Card

Field of the Year Award Recipients Honored

continued from page 14

until September for both practices and games. In April of 2000, the field hosted the US Olympic Soccer qualifying tournament. The field also serves as the football and soccer home field for two local high schools and is the site for major concert events.

The Soccer Field of Texas A&M University, College Station, Texas, earned the 2000 STMA Soccer Field of the Year Award in the College/University division. Accepting on behalf of the facility were Leo Goertz, Athletic Field Manager, and Craig Potts, Assistant Athletic Field Manager.

The Texas A&M Soccer Field was developed in 1994 and, initially, was used only as a practice field for the Women's Soccer Team. Use for soccer has now expanded to eight months a year, with daily practices, weekend games, College and High School Tournaments and soccer camps. The field also is used for softball camps during the summer and as a warm up area for opposing softball teams during the season, boosting overall field use to ten months a year.

The Wright National Soccer Campus of the National Soccer Hall of Fame earned the 2000 STMA Soccer Field of the Year Award in the Municipal division. Accepting on behalf of the Oneonta, New York, facility was Kevin I. Meredith, Turf Manager.

The four fields within the complex were constructed in 1990 and were the first step in establishing a permanent campus for the National Soccer Hall of Fame. The fields are in use from May through

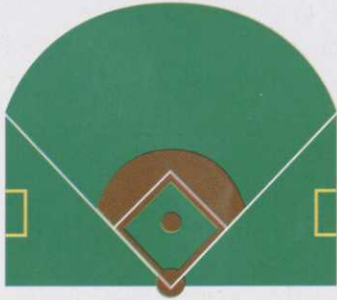
November of each year, with each of the fields hosting as many as 8 to 10 games apiece during an "average" summer weekend.

Ryan Field, of Northwestern University, Evanston, Illinois, earned the 2000 STMA Football Field of the Year Award in the College/University division. Accepting on behalf of the facility were Eric Adkins, CSFM, Agronomist, and Randy Stoneberg, Maintenance Foreman.

Northwestern University's Ryan Field was converted from an artificial turf surface to a natural turfgrass playing surface in 1997 as a key part of the 30 million dollar stadium renovation project. It is maintained to one of the highest levels in college football.

Olmsted Field of the City of Westbrook, Maine, earned the 2000 STMA Football Field of the Year Award in the High School/Parks and Recreation division. Accepting on behalf of the facility was Lance Tibbetts, Sports Field Manager.

Olmsted Field, created over 40 years ago, underwent extensive renovation in the late 1990s. During the fall, it serves as the game field for high school football games, the Tuffy Football All Star Game, both boys and girls soccer games, a Youth Soccer Fun Night and a Regional Band Competition. In the spring, the field hosts 30 track practices, 4 track meets, a 10 school regional track meet and a corporate meet. The field also hosts recreational activities during the summer, including 36 track and field practices and 3 meets.



CAROLINA GREEN CORP. Athletic Field Construction

Outstanding in our field!

Carolina Green Corp. is a **licensed sports field contractor** operating throughout the southeast. We specialize in design, construction and renovation of native, modified soil, and sand based fields. Call on Carolina Green Corp. to provide solutions to your construction challenge.

- ✓ Design Consulting
- ✓ New Construction
- ✓ Renovation
- ✓ Maintenance
- ✓ Specialized Equipment & Materials

MAKE THE RIGHT CALL...
(704) 753-1707
www.cgfields.com



Welcome New STMA Members

continued from page 9

William Hall

City of Sacramento
Citrus Heights, CA

Sam Harris

St. Francis University
Selma, IN

Donald James

City of Winter Springs
Winter Springs, FL

Kody Key

Texas A & M University
College Station, TX

Yoav Korenfeld

Deshe Noy Ltd.
Modien, Israel

Lawn Care Unlimited

Leroy Seifert
Leavenworth, KS

Chip Malone

Houston County Board of Ed.
Warner Robins, GA

Loren Matthews

Village of Pinecrest
Pinecrest, FL

Arthur Milberger

Turfgrass America
Granbury, TX

Larry Morgan

Tuckahoe Turf Farm, Inc.
Hammonton, NJ

Don Nelson

Cagwin & Dorward
Novato, CA

Steven A. Nunez

Student
Austin, TX

Jim Owens

City of Palm Bay
Palm Bay, FL

John Peterman

Blue Valley School Dist.
Overland Park, KS

Randy Price

Auburn University
Auburn, AL

Isaac Risbrudt

University of Minnesota
Minneapolis, MN

David Schilling

Paradise Valley School Dist. #69
Phoenix, AZ

Mike Scholl

Houston County Bd. of Ed.
Warner Robins, GA

Brent Hanson

Seattle Seahawks
Kirkland, WA

David Hathaway

Greece Central School Dist.
Big Rapids, MI

T. Murphy Jenkins

County of Loudoun
Leesburg, VA

Tina Kimball

City of Winter Springs
Winter Springs, FL

Robert Krieger, III

County of York
Yorktown, VA

Kyle MacDonald

Student
Auburn, AL

Bob Maloney

Town of Castle Rock
Castle Rock, CO

Brian McGinty

McGinty Brothers, Inc.
Long Grove, IL

William J. Miller, Jr.

Wilmington Friends School
Wilmington, DE

Stan Moscrip

Indiana University
Bloomington, IN

Kathy Newburg

Towson State University
Towson, MD

David "Pat" O'Brien

City of Luray
Luray, VA

Arampanos Panagiotis

HellaSod Ltd.
Aliartos, Greece

Fred Poppe

City of Palm Bay
Palm Bay, FL

Prime Turf, Inc.

Derrell Spikes
Tifton, GA

Mac Rogers

Carolina Green Corp.
Indian Trail, NC

Michael Schlatter

University of Colorado
Boulder, CO

Winston Short

Rollins College
Altamonte Springs, FL

Don C. Hardin

Northside I.S.D.
San Antonio, TX

Headwater Products

Robert Annalora
Bozeman, MT

Patrick Jonas

St. Andrew's Parks & Playgrnds.
Charleston, SC

Greg KleinSmid

Robert A. Bothman, Inc.
San Jose, CA

Kromer Company

Kraig Kromer
Mound, MN

Theresa Maceyka

City of Long Beach
Long Beach, CA

Larry Malott

Whitman College Sports Complex
Walla Walla, WA

Edward Medieros

Student
Ashford, CT

Dan Royce Monroe

Adams County School Dist. #50
Westminster, CO

Nature Safe Natural & Organic Fert.

Rick Geise
Cold Spring, KY

Rick Newville

Putnam City Schools
Tuttle, OK

Ryan A. Okey

Student/Clemson University
Clemson, SC

Vincent Patterozzi

Baltimore Ravens
Owings Mills, MD

Doug Pottle

Babson College
Wellesley, MA

Jeff Pruitt

City of Roswell
Roswell, GA

Miles Rush

Baltimore Ravens/Student
Columbus, OH

Robert Scoggins

Oak Ridge Schools
Oak Ridge, TN

Mary Simpson

Westfield Schools
Westfield, IN

Joseph Harris

Village of Cooperstown
Cooperstown, NY

Joshua Ingle

Global Stadium Services
Salisbury, MD

Stephen Kelly

Babson College
Wellesley, MA

Keith Kobold

Jeffco Public Schools
Lakewood, CO

LaserTurf Logos

Jerry Meyer
St. Charles, MO

Magic Green Corp.

Greg Wommack
Silex, MO

Luther Martin

University of Washington
Seattle, WA

Mid-Atlantic Turf, Inc.

Pam Driver
Gaithersburg, MD

Alfred D. Morelock

City of Selma
Selma, AL

Brent Neighbor

Student/Iowa State Univ.
Nevada, IA

Northern Designs

Michael J. Astram
Milford, CT

Kenneth Oliver

Florida A & M University
Tallahassee, FL

Elmer Pearsol

Univ. of Florida Athletics
Jacksonville, FL

Poulenger USA, Inc.

Tom Taylor
Lutz, FL

Realty Landscaping Corp.

Gary Mitton
Phoenixville, PA

Glen Sansom

Hershey Sports & Ent.
Hershey, PA

Jeffrey D. Sheets

Kenney Outdoor Solutions
Indianapolis, IN

Dwane Smith

Turfgrass America
Granbury, TX

continued on page 17

Welcome New STMA Members

continued from page 16

Greg Smith
Miami University
Oxford, OH

SportsEdge
Jim Kioczko
Delhi, NY

Rudy Sukal, Jr.
Municipality of Mt. Lebanon
Pittsburgh, PA

Wayne Treadway
S. Jefferson Cnty. Little League
Dandridge, TN

John Veit
Collier County Parks & Rec.
Naples, FL

Joseph Warner
DVH Athletic Turf
Mt. Ephram, NJ

Wood Bay Enterprises
Lyll Adams
Las Vegas, NV

Darin Spassoff
Univ. of NC/Greensboro
Greensboro, NC

Carter C. Stevens
City of Panama City
Panama City Beach, FL

Tom Super
Hunter Industries
N. Ft. Myers, FL

Kevin Trotta
N. Rockland Central School Dist.
Garnerville, NY

Albert Villalobos
New Mexico State Univ.
Las Cruces, NM

Thomas L. Watschke
Penn State University
University Park, PA

Creighton Wright
Town of Queen Creek
Queen Creek, AZ

Speedway New Holland
Billy Morgan
Indianapolis, IN

Kevin Stoecker
City of Portland
Portland, OR

Sustane/Natural Fert. of America
Warren Lorfald
Cannon Falls, MN

Tom Tyler
County of Loudoun
Leesburg, VA

Larry Waddy
City of Roswell
Roswell, GA

Matt Williams
Student/Ohio State Univ.
Columbus, OH

Daryl Zappe
Jensen Corporation
Cupertino, CA

Sports Green
Richard B. Cooke
Newburgh, NY

Storr Tractor Company
Fred Castenschoid
Somerville, NJ

Glen Sweet
Washington Nat. Cathedral
Washington, DC

Valentine & Sons
Rich J. Valentine
Bryn Mawr, PA

John T. Walker
Miami University
Oxford, OH

Marty Wilson
Sports Turf Company, Inc.
Whitesburg, GA

Why the Switch?

Why are football and soccer facilities all over the country switching to Soilmaster® soil conditioner?

For great-looking, safe-playing fields...

Soilmaster® soil conditioner is ideal for incorporating into aerification holes to relieve compaction in the high traffic areas between the hash marks and the 20-yard lines. Made from a unique montmorillonite clay, and fired for maximum hardness and stability, each granule has a network of thirsty pores that quickly wicks water away from the playing surface and promotes drainage. The result – deep rooted, divot resistant turf that recovers more quickly from heavy play.

It's time you made the switch!

Call (800) 648-1166

For information and samples of Soilmaster or our other Pro's Choice® products.



Chapter Events

continued from page 13

The South Texas Sports Turf Managers Association

For information on the chapter or upcoming events, contact: Tom McAfee, Nelson Wolff Municipal Stadium, San Antonio, at (210) 207-3754.

The Mid-South Chapter STMA

For information on the Mid-South Chapter or upcoming events, contact: Robert Bodi at TURF419@aol.com

or Jim Calhoun at (901) 755-1305.

Chapters On The Grow

The newly-forming **New York Chapter** will meet at 10:30 AM on the third Wednesday of each month at the National Soccer Hall of Fame. For formation, contact Kevin Meredith, National Soccer Hall of Fame, via e-mail at Kevin@wpe.com or by phone at (607) 432-2953.

Members on the Move

David Mellor, former Assistant Director of Grounds for the Milwaukee Brewers, is now Director of Grounds for the Boston Red Sox. As soon as a permanent phone number is established for David, we'll let you know.

Tom Rudberg, CSFM, former Groundskeeper with the University of St. Thomas, has taken a position with S & S Tree and Horticultural Specialists, where he manages the new Athletic Turf Management Division. Tom can be reached at (651) 451-8907.

Raechal Sager, formerly with the W. Michigan Whitecaps, is now the Assistant Director of Grounds for the Milwaukee Brewers. You can contact Raechal at (414) 902-4462.

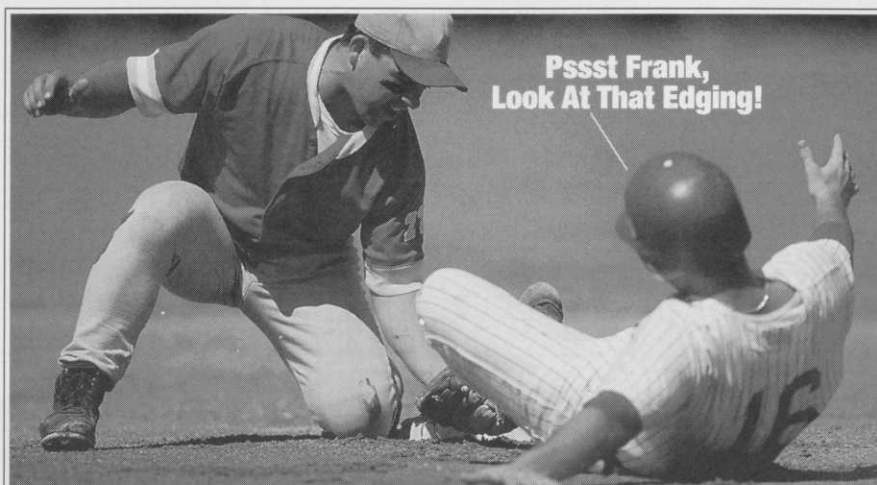
Keith Van Der Leest, with SMG Jacksonville/Jaguars, has a new title - Operations Manager. Keith's new phone number is (904) 633-6109.

Todd Vanek, former Project Superintendent with the S.W. Franks Construction Company, is now Vice-President of RTM Sport, Inc. You can reach Todd at (301) 421-0070.

CONGRATULATIONS PEOPLE!

If you, or anyone you know, has changed positions, let us know so we can help Spread The Word!

Note: In your 1999-2000 Sports Turf Topics Compendium, photos for the article "Laser Grading: Know What You're Getting," by Grove Teates, were incorrectly identified. Credits should read: Photos Courtesy of Grove Teates.



Great Fields Get Noticed.

Turfco offers you a strong team of turf building equipment. They're the fastest and most versatile equipment to let you build hardier and healthier turf. Your sports fields become safer to play on and easier to maintain. Originators of Mete-R-Matic® top dressers in 1961, Turfco's professional equipment gives your field a look that gets noticed.

Pro Turf Edger

Special design makes it easy to follow any edge. Eliminates spade work around the diamond. Oscillating blade action cuts fast and clean. Leaves no mess or no thrown debris to clean up.

Economy Aerator

Now you can afford to breathe life into any sports field. This low cost, 62" aerator has no hydraulics or mechanical linkages for easy use and low maintenance. Hooks up to any vehicle in seconds.

Precision Top Dresser

Fast, uniform, versatile. Patented chevron belt lets you handle top dressing, lime, crumb rubber, gypsum, calcine clay, compost and even overseeding with precision. Level fields and amend soil consistently.



For details and the name of your local dealer, call

1-800-679-8201

Turfco Manufacturing Inc.
1655 101st Avenue Northeast
Minneapolis, MN 55449-4420

*Choice Performers,
Choice Fields.*

TURFCO®

Headquarters Report

by Steve Trusty, Executive Director

It was great to see so many of you in Tampa. I wish that I could have visited with each one of you personally. Most of those I did get to visit with said that this was the best STMA Conference that they had ever attended. Then there were the 300 individuals that were attending their first conference. Indications are that most of this year's 1,100 plus attendees are already making plans to attend next year in Las Vegas. It is not too early to book your room. Simply contact the Riviera Hotel and Casino at 1-800/634-6753 and let them know that you are part of the STMA group and wish to make your reservations for next January 16 - 20 and for as many nights before or after the Conference that you care to vacation. Our rates are good for 3 days on either side of the Conference dates.

Those of you that were unable to make it to Tampa missed a great Conference. There were more people pre-registered for Tampa than there were members in January of 1996. Over 130 companies filled 217 booths at the Tampa Convention Center. Over 650 people attended the Welcome Reception on Wednesday evening. 225 people took part in Wednesday's tour of the Super Bowl facilities at the same time as 63 people attended Floyd Perry's seminar and 80 people took part in the first STMA/Textron Open Golf Tournament. The Category Sessions on Wednesday afternoon were well attended by people that offered some very good ideas to help STMA grow even more. The portions of each of the sessions that I sat in on were all very positive and constructive.

Close to 70 people sat in on the 3rd Annual COTS Session for Chapter Officers. Many ideas were shared to help all of our chapters better serve their members and potential members and to grow. Four new chapters were approved that brings our total to 23. Welcome to the new Mo-Kan, Nebraska, New Jersey and Virginia Chapters. Quite a number of people requested information on how to start a chapter in their area. Make sure that you are doing your part to help a chapter grow in your area. Contact the office if you need more information.

Surveys are being sent to all attendees to obtain their feedback to help in planning future Conferences. If you didn't attend and still have suggestions that could help you get to a future one, we'd like to hear them also.

Talking about surveys, make sure that you respond to the Every Member Survey that you have just received or are about to receive. The survey itself was being finalized as this column was written. This is the first time that all mem-

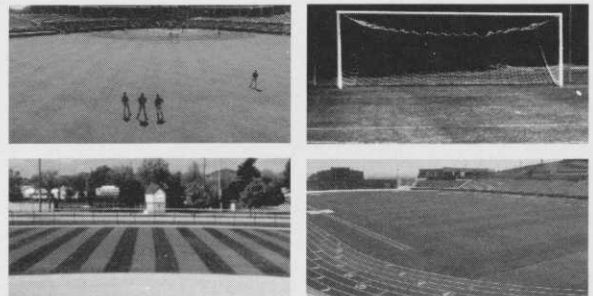
bers of STMA have been asked to provide some very valuable information all at the same time and it is very important that you all respond. The bigger the response, the more valuable the collective results will be.

Did you get to see the show on CBS the night before the Super Bowl where they saluted some of the unsung heroes of the game? They interviewed George Toma and he commented on how important all of the individuals on his crew are and that he wouldn't be anywhere if it weren't for his crew. Many of the Award Winners at Friday's banquet echoed similar comments. Besides taking time to talk to 225 of you on the Seminar on Wheels Tour, George reported that well over 100 of you just stopped by the stadium to see the Super Bowl field while you were in Tampa. He had instructed Security to usher anyone that identified himself as an STMA member to George and he graciously took time for each one that stopped by. Be proud of yourself, your profession and the job that you do ... "and then some."



Team Sports and Recreational Turf Takes a Pounding...Fight Back with FloraSport™ Turf Products

For superior sports and recreational turf, you need superior turf products. FloraSport™ Turf Products are specifically formulated to enhance **HEALTH, DENSITY, CONSISTENCY, RE-GROWTH, COLOR, STRESS TOLERANCE, and ROOTING**. Let us help you realize the full potential of your facility's sports turf. We have the know-how and products that can really make a big difference in the health and quality of your turf. Give us a call today.



FloraSPORT™
TURF PRODUCTS

144 Mid South Cove • Collierville, TN 38017
(901) 853-2898 • FAX (901) 853-3101
www.florasport.com

The Ultimate In Field Cover Handling...



WHAT THE USERS SAY...

From 1-10, your company is a 10...
Jim Simmons, Facility Mgr., Buckingham
Little League, Ft. Myers, FL

Great service... the best...
Chip Baker, Asst. Baseball Coach
Florida State University, Tallahassee, FL

Experience with Covermaster has been
outstanding... appreciate special
attention...

Ray Tanner, Head Baseball Coach,
Univ. of South Carolina, Columbia, SC

Excellent quality with competitive prices...
Johnson Bowle, Associate AD, Drexel
University, Philadelphia, PA

Covermaster takes extra step to meet
customer's exact needs...
Gay Mayse, Asst. Gen. Mgr., Wisconsin
Timber Rattlers, Appleton, WI

Response time was great... recommended by
groundskeeper of St. Louis Cardinals...
David Hopkins, Alton American Legion
Baseball, Alton, IL

Very good... highly recommended...
Dunham Wright, Facilities Supv., Northeast
Louisiana University, Monroe, LA

Delivered in perfect condition... best
product I looked at...
John Miliardo, Supt. of Parks, City of
Middleton, Middleton, CT

The Field Cover System by COVERMASTER®.
It's the perfect system to install, remove and store a protective cover.

1 TARP MACHINE™ rolls the cover on or off the field in a minimum of time. Can be attached to any 14 HP tractor equipped with a PTO.

2 TARP MATE™ stores any size cover. Strong and lightweight, the 28" diameter plastic roller is complete with safety end caps. In three standard lengths.

3 COVERMASTER® infield raincovers and football fieldcovers are readily available in a variety of colors and weights.

FREE VIDEO

SEE FOR YOURSELF! Call, fax or e-mail for a free video, cover samples and our new, fact-packed cover brochure.

COVERMASTER™
COVERMASTER
COVERMASTER
MASTERS IN THE ART OF SPORTS SURFACE COVERS



CALL TOLL FREE
1-800-387-5808



VISIT OUR WEB SITE!
www.covermaster.com
E-MAIL: info@covermaster.com

COVERMASTER INC., 100 WESTMORE DR. 11-D, REXDALE, ON, M9V 5C3 TEL 416-745-1811 FAX 416-742-6837

STMA Headquarters
1375 Rolling Hills Loop
Council Bluffs, IA 51503-8552

PRSR STD
MAIL
U.S. POSTAGE PAID
OMAHA NE
PERMIT #705