

Thursday Morning Lineup A Winner

Thursday, January 18th, marks the start of the Educational Sessions at the 2001 STMA Conference & Exhibition in Tampa, Florida. And what a start it's going to be!

Lee Roy Selmon began his winning streak early on. During his senior year at Oklahoma University, he earned both the Outland Trophy and the Lombardi Trophy, was an Academic All-American and made the Dean's Honor Roll. As the first-ever draft choice of the newly formed Tampa Bay Buccaneers, he went on to become such a dominant force on the team that his jersey (No. 63) is the only one they've ever retired. Also during his career he earned his way into both the College Football Hall of Fame and the Pro-Football Hall of Fame.

After a back injury forced his retirement at the end of the 1985 season, Selmon continued to give to the profession by accepting the position of Associate Athletic Director for External Affairs at the University of South Florida. In his current position Selmon continues to contribute to the game as he creates a new legacy in helping to rebuild the school's football program.

Come and listen to his insight on "The Sports Turf Perspective: Pro Player to Associate Athletic Director," on Thursday morning, January 18th.

Then switch to the sport of baseball as Bucky Dent offers his insight on "The Sports Turf Perspective: Pro Player to Coach." This session immediately follows Selmons on Thursday morning, January 18th.

Russell "Bucky" Dent honed his baseball skills as a three-time American League All-Star and played



on two World Championship teams with the New York Yankees. In the 1978 Divisional Playoff game against the Red Sox, he shocked Boston with a three-run home run over the Green Monster at Fenway Park.

Mr. Dent was named the 1978 World Series MVP as the Yankees won their second straight championship. He played in a total of 1,392 MLB games with the Chicago White Sox, New York Yankees, Texas Rangers and Kansas City Royals, and compiled a .247 career batting average. Mr. Dent is in his sixth season as the Texas Rangers' Dugout Coach and Infield Instructor. He also positions infielders during the games. He's known throughout the baseball world as one of the most respected defensive coaches. To further spread his share his knowledge of the game, he operates the Bucky Dent Baseball School in Boca Raton, Florida.



Also during the Thursday sessions, Mike Newell, NFL Player, will share his "Sports Turf Perspective: College Player to Pro Player." The three of them will then join forces for the "Sports Turf Perspective: Ask the Panel."

Proud to Support STMA



SPORTS TURF MANAGER

Official Newsletter of the Sports Turf
Managers Association

1375 Rolling Hills Loop
Council Bluffs, IA 51503-8552
712/366-2669, 800/323-3875
(FAX) 712/366-9119

(e-mail) SportsTMgr@aol.com
(world wide web)



www.sportsturfmanager.com

Volume XVIII Number 6
November/December 2000

OFFICERS

President

Rich Moffitt

Munie Outdoor Services, Inc.

President-Elect

L. Murray Cook

Ballpark Services, LLC

Immediate Past President

Stephen Guise

Marina Landscape, Inc.

Commercial Vice President

Lynda Wightman

Hunter Industries

Secretary

Tim Moore

M-NCPPC, Wheaton Maint. Facility

Treasurer

Bob Campbell

University of Tennessee

BOARD MEMBERS

Tom Burns

Texas Rangers Baseball Club

Mike Andresen

Iowa State University

Dave Rulli

Jefferson County Stadium

Mike Trigg

Waukegan Park District

Monty Montague

Turfco/National

Dr. Tony Koski

Colorado State University

NATIONAL HEADQUARTERS

Executive Director

Steve Trusty

Communications Director

Suz Trusty

NEWSLETTER EDITOR

Stephanie Watts

Trusty & Associates

TECHNICAL EDITOR

Dr. Gil Landry, Jr.

The University of Georgia

Sports Turf Manager is a publication of Sports Turf Managers Association (STMA). It is published bi-monthly and is free to STMA members. Sports Turf Managers' goal is to promote the mission of the association by providing a channel for communication between the representatives of the board and its constituency. STMA is not responsible for the opinions expressed in this publication. Address changes, advertising, photographs, and editorial inquiries should be directed to the executive offices. © 2000 Sports Turf Managers Association. All Rights Reserved.

President's Message

Holiday Cheers

by *Rich Moffitt, President*

This year, instead of "only" wishing you the greatest of Holiday Cheer (which I do), I'd also like to raise a few Holiday Cheers on behalf of sports turf managers and the remarkable job you do.

I raise a cheer for your consistently safe fields - day after day, week after week, month after month, year after year. You understand the safety of the athletes is your prime concern and do everything in your power to insure a safe playing surface.

I raise a cheer for your highly playable fields - even though you and the crew arrived at the field at midnight or 4 AM or even stayed overnight to monitor conditions and to handle the tarping or remove the snow or whatever else it took to combat weather conditions and save the game.

I raise a cheer for your great looking fields - for that extra effort you give to maintain an excellent playing surface AND create a visually striking pattern or to paint that special logo.

I raise a cheer for your never-ending quest to increase your knowledge and skills. You're always looking for a better way, a new technique or practice or product that produces better results or saves your program time and money.

I raise a cheer for your volunteer spirit, for the time and talents you give in tackling a service project to make a local field better.

And I raise a cheer for your willingness to share. You go the extra mile to help other sports turf managers by hosting a Chapter meeting or writing an article for a newsletter or magazine, or giving a presentation at a chapter meeting, turfgrass conference or the STMA Conference. You serve as a committee member or board member or officer. You take the time to share one on one



Rich Moffitt

over the phone, or via email. You even answer the request of another sports turf manager to check out a problem at their field and offer your advice.

I'm cheered just thinking about what a wonderful group of people you are and how thankful I am to represent you as STMA President.

Unfortunately, those in the rest of the world don't know you like I do. A major issue that came to the forefront during the STMA Strategic Planning sessions was the need to educate others on who sports turf managers are and what sports turf managers do...and why it matters. We need to shine the spotlight on the complexities of athletic field maintenance and why it takes the right balance of art and science to provide safe, playable conditions.

We'll want to have access to as much information as possible to make sure all aspects of your story are told. For that reason, and to make sure that STMA understands the wants and needs of its membership in order to serve you better, we will be conducting a comprehensive survey. When you receive one of the survey forms, please consider it your personal invitation to "tell it like it is." Please complete the form, supplying detailed information and your own personal opinions on the issues addressed. Your views will make a difference...just as you do, every day, on the job.

Cheers!

Floyd Perry Workshop

A new optional event joins the Conference line up for 2001. It's a FLOYD PERRY WORKSHOP - to be held on Wednesday, January 17.

Floyd Perry, for those of you who may not know him, is the Director of Grounds Maintenance Services in Orlando, Florida. He has conducted these educational seminars and workshops in all 50 states. He's spoken at numerous state, regional and national Conferences and is a frequent contributor to sportsTURF magazine and other industry publications.

Floyd is author of three books: The Pictorial Guides to Quality Grounds Keeping: I Covering all the Bases; II There Ain't No Rules, and III Maintain it Easy, Keep it Safe.. Floyd also has produced three videos: The ABC's of Field Maintenance, Vol. I Softball; Vol. II Baseball; and Vol. III Soccer/Football Field Refurbishment.

Floyd was the head groundskeeper for the 1996 Olympic venue, in Columbus, Georgia. Prior to estab-

lishing Grounds Maintenance Services, he served as the Director of Baseball for the Boardwalk & Baseball Theme Park in Baseball City, Florida.

Floyd's workshop is a combination of in the classroom educational sessions and on the field hands-on sessions focusing on efficient methods to handle daily tasks and time-trimming techniques to accomplish quality field maintenance.

The workshop will begin with classroom sessions including: Why I Need to be More Professional in the 21st Century; and Break the Budget: 101 Creative Ideas for the Progressive Groundskeeper. Participants will then spend part of the day out on the field, with hands-on demonstrations that both show and tell key points of field maintenance.

Add this super session to your Conference line-up and get ready to learn from a Master!



Why the Switch?

Why are football and soccer facilities all over the country switching to Soilmaster® soil conditioner?

For great-looking, safe-playing fields...

Soilmaster® soil conditioner is ideal for incorporating into aerification holes to relieve compaction in the high traffic areas between the hash marks and the 20-yard lines. Made from a unique montmorillonite clay, and fired for maximum hardness and stability, each granule has a network of thirsty pores that quickly wicks water away from the playing surface and promotes drainage. The result - deep rooted, divot resistant turf that recovers more quickly from heavy play.

It's time you made the switch!

Call (800) 648-1166

For information and samples of Soilmaster or our other Pro's Choice® products.



Are You Putting Your Field to Bed or Putting it Out to Pasture?

by Dr. Dave Minner, Iowa State University, Extension Turfgrass Specialist

If you are putting your field to bed this fall and tucking it in nicely with some love and care, then you can expect it to wake in next spring ready to go and ahead of the game. If you are darn glad the fall season is over and you don't want to see that field until next year, then expect it to look like a pasture, because you are treating it like one.

Here are a few end-of-the-season tips that will help you prepare your football/soccer/baseball/softball fields for next year.

Soccer/Football

- Overseed with your fall turf seed mix during the fall game schedule. Ideally you'll have started in September and kept going until the last game. Spread seed over the high traffic areas

and allow players to cleat it in or prepare a pregerminated seed mixture with sand and fill divots. Sure, some of the seedlings are injured, but some of them also survive. Solid tine aeration during the playing season, followed by seeding, is another way to get some grass started as the field begins to wear out. Keep in mind your strategy for fall seeding. It not only gives you some fall cover of bare areas with green color, but more importantly, any seedling plant that survives the winter will quickly mature in the spring and make a substantial contribution to the biomass cover of the field during the summer. Fall established plants will be much stronger than plants established in the spring. Spring seedlings usually succumb to weeds or summer stress and the new turf is too immature

for football and soccer that start as early as August 15th.

- At the end of the season, hollow core the field and topdress with a medium sand. Drag the cores in if you have a sand field and remove the cores if the field is too hard from a high clay content. Removing cores will help you build up the sand content in the surface faster. If cores cannot be removed, then topdress with sand first, then core, then drag the field. Deep tine coring with the vertidrain is also very effective on soil-based fields.

- Dormant seeding in combination with coring and topdressing will give the field a quick start in the spring. Be sure to get the seed into the ground. Use a drill seeder or drag the seed into the aerifier holes. Seed that is visibly left on the surface will seldom germinate next spring.

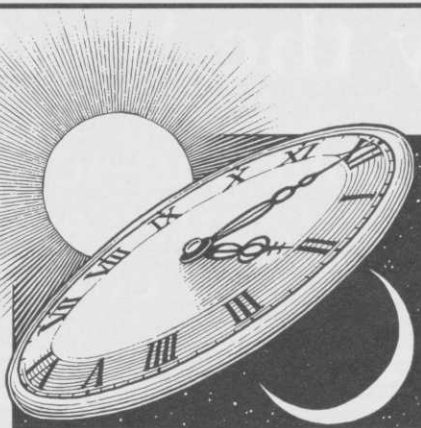
- Breathable covers, such as those made by Covermaster, can be used in high traffic areas to help extend the growing season in the fall and speed green-up in the spring. Covers also can allow for seedling development during the winter. Snow mold treatment is recommended on areas that will be covered during the winter.

- In Northern areas, pre-emergent herbicides, such as pendimethalin, can be applied in late fall, following the playing season, to prevent early germinating knotweed that is especially troublesome in high traffic areas. In any region, fall applied pre-emergent herbicides should not be used in areas of the field where turfgrass seed is used in the fall or spring.

- Sod is often a better solution to fixing small wear areas instead of trying to nurse the field back by seeding. Sod is an instant solution for worn goal boxes and areas between the hash marks. It may be late in the

continued on page 5

Stop Wasting Time...



Buy ON-LINE

Complete On-line Catalog Ordering

www.ewing1.com

800.343.9464

EWING
IRRIGATION & INDUSTRIAL & GOLF

*Friendly People, Superior Service and
Quality Products Since 1922.*

Putting Your Field to Bed

continued from page 4

season, but if a sod producer can cut and deliver sod, then you can lay it on your field. Even if the sod doesn't thoroughly root down in the fall, it will give you a jump on the spring season and finish rooting in the spring.

Baseball/Softball

The fall practice schedule for baseball and softball is usually not as demanding on the field as the spring game schedule. However, it is important to remember that the field condition entering the winter will be the same as the field condition during the start of the baseball/softball season, especially for college fields. College baseball/softball can start as early as February 15th and, if the weather is nice, they will be on the field. The spring schedule for high school usually starts later in the spring since the high school season continues in the summer after classes have ended.

- Many of the practices described for football/soccer can also be used to improve the grass areas of baseball/softball.
- Skin areas are often left to fend for themselves during the winter. Strong winds can blow the infield dirt materials into the adjacent grass areas and cause large lips to build up during the winter. Boards or silt fence have been used to reduce blowing dirt. Another simple method, described by Luke Yoder of the Iowa Cubs, is to lay down 2-by-4 boards along the dirt infield and adjacent grass where the lip usually starts to form. Lay the boards flat and stake them if needed. The dirt piles up on the boards and is easily removed in the spring.

Some high schools disk the skin area and leave it rough all winter. This works fine if you don't need the field until late spring. If you disk the skin area in the fall and need to have the field ready for play in March, you could have a problem. The worked-up infield will hold water and it may be impossible to drag and firm the surface until the surface has dried.

- Mound and batter box areas should be reconditioned in the fall and then covered with a tarp for the winter. Pull the tarp off in the spring and you are ready to go.
- Sod worn areas in front of the mound and at first and third so they will be ready in the spring.
- Avoid using non-selective soil sterilant herbicides on skin areas to prevent weed growth in skin areas. It is likely that these materials will find their way into the surrounding turf areas and cause injury.

The most important part of your fall program is to have a plan. Don't just drop the field after the last fall game and then try to get ready for next year in the middle of the summer. Implement your "putting the field to bed program" immediately after your last fall game.



The Vision  The Reality
rettler corporation

- Landscape Architecture
- Engineering
- Land Surveying
- Site Construction Management
- Maintenance Programming
- Site Maintenance

Our professionalism and dedication for safety first on any athletic field coupled with complete service and quality make us a valued partner for your project.


"Rettler Corporation Turns Visions into Reality"

3317 Business Park Drive .. Stevens Point, WI 54481 ..
Telephone .. 715.341.2633 .. Fax: 715.341.0431 .. Email: info@rettler.com

We've Got GAME!

A 60-year **tradition of excellence** and a commitment to quality **personal service** make Harrell's a **winning solution** for:

- Fertilizers
- Chemicals
- Amendments
- TURFACE®


Harrell's
Custom Fertilizers Worldwide

Call 1-800-282-8007
Suppliers of Sports Turf Products in the southeast

Welcome New STMA Members

Marren Anderson
Univ. of California/Santa Cruz
Santa Cruz, CA

Anthony Bonavita
University @ Stony Brook
Stony Brook, NY

Chemical Containers, Inc.
Jeff Fabry
Lake Wales, FL

John J. Doyle, IV
JDL Equipment Co., LLC
Montgomeryville, PA

Jeffrey Fowler
Penn State Cooperative Ext.
Seneca PA

Karl Gant
Arizona Diamondbacks
Phoenix, AZ

Richard Hurt
Student/Mississippi State Univ.
Slatillo, MS

Chris Kuehn
Fox Valley Park Dist.
Aurora, IL

Steve Leth
City of St. Paul
St. Paul, NE

Mike Mobley
Grant Sports Field/Grant Environ.
Columbus, GA

Ryan Newman
Iowa State Univ.
Ames, IA

Parkway Research
James D. Blackburn
Houston, TX

Nick Pressler
West End Golf Course
Gainesville, FL

Michael Robinson
Turfcare Products TORO
Austell, GA

Brandon Sands
Epes, Inc.
Annapolis, MD

Dennis Sobecki
Sylvania Recreation
Sylvania, OH

Lance Tibbetts
City of Westbrook.
Westbrook, ME

Dave Walker
Schaumburg Flyers
Schaumburg, IL

Ross Whitaker
Salt Lake City Corp.s
Salt Lake City, UT

Grant Baker
Student
W. Lafayette, IN

Rickey J. Brown
City of DeSoto
DeSoto, TX

Homer Cowles
City of Bowling Green
Bowling Green, KY

Chris Edmonds
Poughkeepsie, NY

Don Frantz
Student/Colorado State Univ.
Ft. Collins, CO

Jody Gill
Blue Valley School Dist.
Overland Park, KS

Douglas Johnsen
San Dieguito Union High
Encinitas, CA

Lee Kuiters
Washington Redskins
Ashburn, VA

Brian Little
Environmental Care, Inc.
Wilton Manors, FL

Jeff Moffitt
Indian Trail Improvement Dist.
W. Palm Beach, FL

Douglas W. Nicholson
Hall County Parks & Leisure
Gainesville, GA

Steve Peeler
D.A. Hogan & Assoc., Inc.
Seattle, WA

Dennis Quigley
U.S. Naval Academy
Annapolis, MD

Steve Romine
Sports Turf Mgmt., LLC
Woodstock, GA

Scott Serwacki
Henderson State Univ.
Arkadelphia, AR

Eric Stordahl
O'Boyle, Cowell, Blalock & Assoc.
Kalamazoo, MI

Thomas J. Tralka
SUNY Cobleskill
Unadilla, NY

Kevin Walters
Student
Walla Walla, WA

Bill Wiley
Garland I.S.D.
Garland, TX

Joshua Barnes
Georgetown College
Georgetown, KY

LeRoy Butler
RMT Sports Turf Contractors
Littleton, CO

Bob Darm
Madison Metro School Dist.
Madison, WI

Chad Fincher
City of Whitefish
Whitefish, MT

Austin Freeman
Student/Univ. of Arkansas
Fayetteville, AR

Joe Hernandez
Fox Valley Park Dist.
Aurora, IL

Bobby R. Jones, Jr.
City of Clewiston
Clewiston, FL

Rande Lane
City of Charleston
Charleston, SC

Thomas MacKenzie
RTM Sport, Inc.
Burtonsville, MD

Matt Money
Student/Clemson Univ.
Clemson, SC

Scott R. Oldham
Univ. of Utah
Salt Lake City, UT

Jerry Polston
City of Bowling Green
Bowling Green, KY

Joel Richardson
Student
Jacksonville, FL

William W. Rudometkin
Cal State/Long Beach
Montebello, CA

P. Timothy Shank
Coastal Carolina Univ.
Conway, SC

Steve Strong
Basin Recreation
Park City, UT

Jake Tyler
Louisville RiverBats
Louisville, KY

Waupaca Sand & Solutions
Jim Trzinski
Waupaca, WI

Jason Wingate
Student/Univ. of Arkansas
Fayetteville, AR

Mark Baum
StrathAyr Turf Systems Ltd.
Vista, CA

Nick Caggiano
City of Nashua
Nashua, NH

Matt Divine
Georgetown College
Georgetown, KY

John F. Fleck
Westminster Academy
Ft. Lauderdale, FL

Robert French
College Station I.S.D.
College Station, TX

Brian J. Hiester
Student/Reading Phillies
Reading, PA

Richard D. Kelly
City of Port St. Lucie
Port St. Lucie, FL

Joe Lara
Becker-Underwood, Inc.
Yorba Linda, CA

Augusto E. Margueirat
Buenos Aires, Argentina

David W. Nanney
City of Elizabethton
Elizabethton, TN

Steve Oliver
City of Daytona Beach
Daytona Beach, FL

Joseph M. Potrikus
Greener World Lndscp. Maint.
Fly Creek, NY

Roberts Seed Company
Denise DeHart
Tangent, OR

Paul Sacramone
Town of Stratford
Stratford, CT

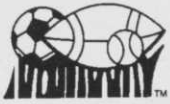
Willie Shepard
City of Daytona Beach
Daytona Beach, FL

Greg Taylor
City of Shelby
Shelby, NC

Kenneth R. Underhill
Proto-Type Design
Strasburg, PA

Jim Welshans
Penn State Univ.
Fly Creek, NY

Chris Young
Student/Univ. of Arkansas
Fayetteville, AR



Chapter Events

Mark your calendars now for STMA's 12th Annual Conference & Exhibition, "Upward and Onward," to be held January 17 - 21, 2001, at the Tampa Marriott Waterside and the Tampa Convention Center in Tampa, Florida.

Ohio Sports Turf Managers Association

The Ohio Chapter and Profile Products present the OSTMA 2000 Field of the Year Awards. These awards recognize outstanding efforts in maximizing athletic performance and safety for their respective facilities.

Parks and Recreation Softball/Baseball Facility: Carter Park, City of Bowling Green - Tim Stubbs, Grounds Maintenance Director; Professional Baseball: Cooper Stadium, Columbus Clippers - Jeff Limburg, Head Groundskeeper; Professional Soccer: Crew Soccer Stadium, Columbus Crew - Darian Daily, Head Groundskeeper; High School Baseball: Birmingham Public Schools - Rob Carson, Turfgrass Specialist; and Outdoor Recreational Sports Complex: Fred Beekman Park, Ohio State University - John Mott, Superintendent Intramural Fields.

OSTMA's 2000 President's Award was issued to Karen Zelinko of Athletic Field Services in recognition for her outstanding effort in the sports turf industry and the OSTMA. OSTMA's Commercial Affiliate of 2000 was Covermaster Inc.

OSTMA awarded two \$500 educational scholarships. Recipients were Miles Rush and Marc Mayer, both students at Ohio State University. Recipient of the OSTMA \$500 conference scholarship was Ryce Davis, Sr., Assistant Groundskeeper for Columbus Crew Stadium.

The 2001 officers elected to serve 2 year terms are: President - Darian Daily, Columbus Crew; Immediate Past President - Boyd Montgomery, Sylvania Recreation; Vice

President - Jeff Limburg, Columbus Clippers, Vice President Commercial - Karen Zelinko, Athletic Field Services; Secretary - Dave Conover, The Andersons; and Treasurer - Brian Gimbel, Ohio State University.

Board Members with terms ending December 31, 2001 are: Pam Sherratt, Ohio State University and Bob Nepper, City of Fremont.

Board Members with terms ending December 31, 2002 are: Dr. David Gardner, Ohio State University; Duane Smith, Baldwin Wallace College; and Matt Miller, North Coast Distribution.

For information on the OSTMA Chapter or upcoming events, contact: Joe Zelinko at (800) 897-9714 or Boyd Montgomery at (419) 885-1982 extension 50, or click on your computer to www.glstma.org to visit the chapter's website.

The Iowa Sports Turf Managers Association

The Chapter will participate in the Iowa Turfgrass Conference and Trade Show to be held from January 29 to 31, 2001, at the Polk County Convention Complex in Des Moines, IA.

The Sports Turf Workshop and the Low Budget Sports Field Workshop both run from 8:00 am to 4:00 pm on January 29th. The January 30th General Session features Keynote Speaker, Dan Gable, The University of Iowa's all-time winningest wrestling coach. The afternoon sports turf section runs from 1:30 pm to 3:00 pm. The ISTMA Annual Membership Meeting and Election will be held from 3:00 pm to 4:00 pm on January 30th. The sports turf section on January 31st runs from 8:00 am to 11:30 am. A professional development concurrent session is offered from 1:30 pm to 3:30 pm featuring Dr. Mark Redmond of Iowa State University addressing, "Team Building: making it work for you!"

continued on page 13

OFFICIAL STMA CHAPTER SPONSORS

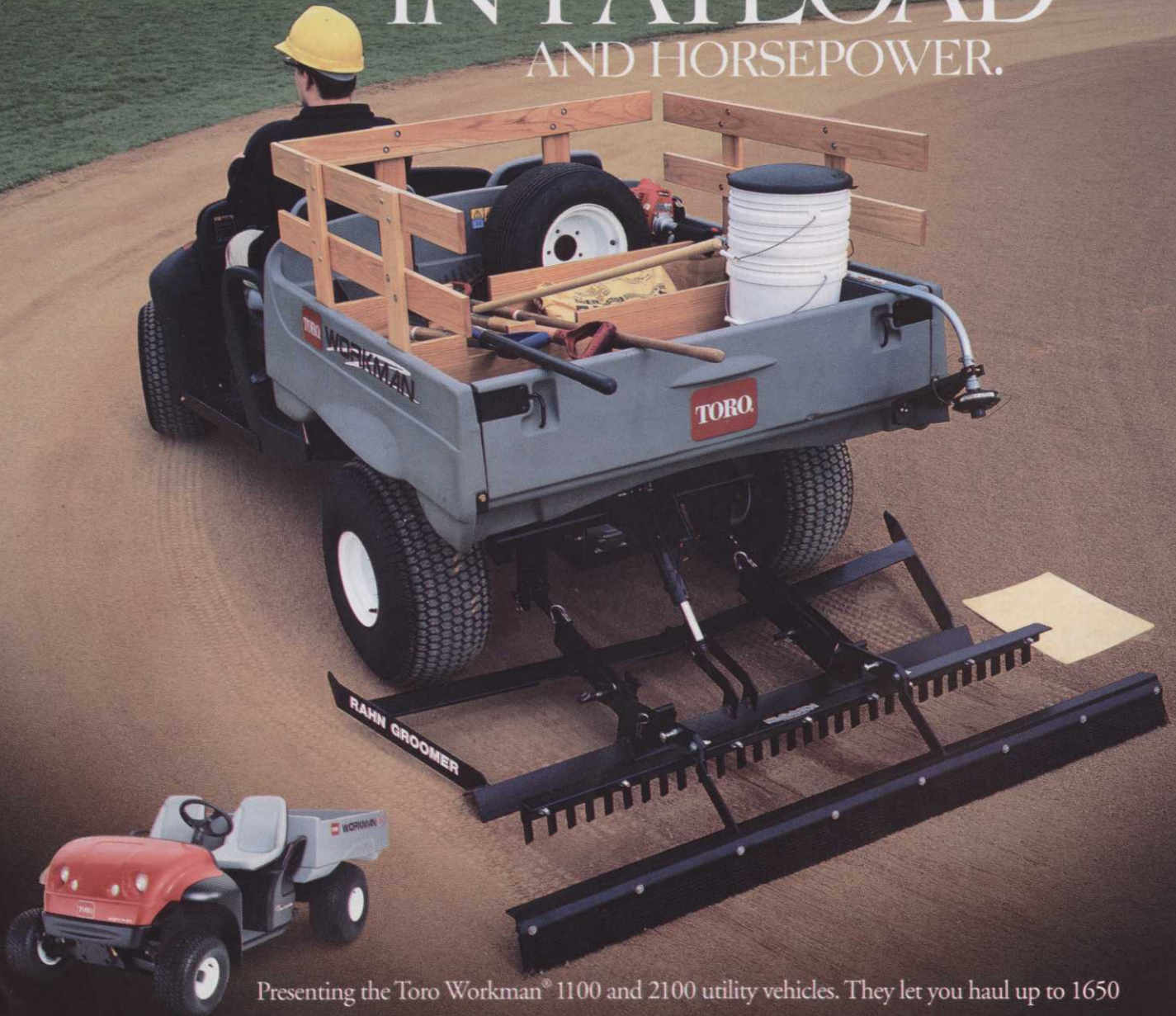
Gold Sponsors



Silver Sponsors



WHEN THE JOB IS MEASURED IN
MILES AND ACRES
YOU NEED AN OFFICE THAT'S MEASURED
IN PAYLOAD
AND HORSEPOWER.



Presenting the Toro Workman® 1100 and 2100 utility vehicles. They let you haul up to 1650 pounds under the power of either a twin-cylinder 16 hp or a single-cylinder 11 hp engine. And their get-the-job-done features don't end there. There's a double-walled cargo box with compartments you can customize, an optional ballfield grooming attachment and Active In-Frame™ suspension so you can float over curbs and bumps. All of

which means you can sum up these machines with just two words: Can do. To learn more, call your Toro distributor at 800-803-8676, or visit www.toro.com.

TORO

**IT'S ABOUT
PRODUCTIVITY™**

Board Meeting Report

Your STMA Board met on September 29 - 30, 2000, at the Wyndham Arlington DFW South, in Arlington, Texas.

STMA Finance Committee Chair, Bob Campbell, reported that the Finance Committee and Executive Director, Steve Trusty, met in Omaha, Nebraska, on August 23 to establish financial policies as outlined in the STMA Strategic Planning initiative and to develop the proposed 2001 budget. The committee also met with representatives from the auditing firm and the primary bank investment contact during this meeting.

Campbell reported STMA's financial position remains solid with income and expenses for 2000 in accordance with budget projections and with continued development of the reserve fund to insure long-term financial stability.

Much of the Board's meeting time was spent in review of the recommendations of the Strategic Planning Committee, the development of the 501(c)(3) Foundation, and the review and approval of the 2001 budget. Interaction between these three key major strategies for the association were explored, with key budget items for 2001 linked to the Board's acceptance of the recommended initiatives.

Significant Board action during this meeting included acceptance of the Strategic Plan as presented by the Strategic Planning Committee; acceptance of the formation of the 501(c)(3) Foundation as recommended by the Foundation Development Committee; acceptance of the financial policies as recommended by the Finance Committee; approval of the 2001 budget; approval of the association management contract with, and compensation package for, Trusty & Associates for 2001.

A Survey Committee was appointed to follow up on the development of a survey as proposed as part of the Strategic Plan initiative.

The Nominations Committee submitted a recommended slate of officers and board members for 2001.

The Board approved the affiliation of the South Texas chapter contingent on the completion of the necessary paperwork. The Board approved the recommendations of the Education Committee after their review of the logistics of establishing a lending library to instead provide a resource source book to address the educational resource assistance requested

by the Chapters. The Committee noted they were proceeding with exploration of the establishment of a speaker resource list.

The Board reviewed 2001 and 2002 Conference details. The Board also reviewed the preliminary information on potential Conference sites for 2003 and directed Trusty to continue to explore site options with those cities and facilities bidding for the 2003 Conference and to report his recommendations to the Board.

The next Board Meeting will be held on Tuesday, January 16th, 2001, in Tampa, Florida, in conjunction with the STMA Conference and Exhibition. The STMA Annual Meeting will take place on Saturday, January 20, 2001, also in conjunction with the Conference. If anyone has comments or questions on STMA or STMA Board action, you are invited to contact STMA Headquarters or any STMA Officer or Board Member. All are listed on page 2 of this newsletter.



**A Survey is
Coming!**



**Watch your mail for an
important survey
coming to you in February 2001.
This is YOUR chance to voice
YOUR opinions!**



**DIAMOND
PRO**

Professional Groundskeeping Products

1-800-228-2987

www.diamondpro.com

DOC'S DUGOUT - An Inning From Our Past -

Dr. William H. Daniel - A Man with Ideas Ahead of His Time - Part II

By Dr. Kent Kurtz - STMA Historian

In the early 20th Century there was a man with a lot of ideas, visions and prophecies but no one would listen to him and he died before he saw his dreams fulfilled. His name was Billy Mitchell who advocated a separate air force and was outspoken on his military views on air tactics. In 1926, Mitchell received a court martial for insubordination for his views. In many respects Dr. Bill Daniel's life can be compared to Mitchell's, his life was filled with new views and ideas that were sometimes doubted and many times criticized by many of his peers and colleagues. Although many of his innovations were not accepted at the time, they are fairly commonplace today in the world of sports turf. We will examine some of these ideas in this issue and more in future issues.

A Pioneer in the Area of Turfgrass Science

Improved Turf Varieties

During the early years, after the introduction of Merion Kentucky bluegrass in 1947, many research scientists began to investigate ways to improve the grasses available to the turfgrass industry. Bill Daniel is responsible for introducing Evansville creeping bentgrass and Midwest zoysiagrass (1963) and later Sodco Kentucky bluegrass (1967). He tested



his ideas, attempted different management practices and always looked for the best way to produce a better grassy carpet. Bill was one of the first advocates of blending cultivars /varieties of the same species when establishing turf. This practice is common today, particularly with cool season species such as Kentucky bluegrass, perennial ryegrass, tall fescue and, to some extent, with

creeping bentgrass. Blends are formulated to reduce disease susceptibility, improve overall color, texture and density, and to better cope with environmental stresses and management practices, to name but a few.

Crabgrass Eradication

In the process of trying to find a control for crabgrass it was discovered that calcium and lead arsenate not only

continued on page 11



A Turfgrass America Company

1926 Acton Hwy • Granbury, TX 76049

1-888-NEW GRASS

639-4727

GRASS

Ours **IS** Greener
On Your Side Of
The Fence!

SAND BASED
SOD

BAyr Root
Turf

42" Big Roll
SOD

Products & Services You've Trusted
For More Than **25** Years!!

Southern Athletic Fields, Inc.

We Are Into

Red

SAF Coat is: Affordable
Great Percolation
Non-Abrasive
Superior Red Color

SAF Coat is a crushed, tempered shale stone that is light weight and easy to apply on skinned areas of infields.

1309 Mainsail Drive
Columbia, TN 38401

Email: saf@mulemix.com

Website: www.mulemix.com

931-380-0145 Fax

Call 1-800-837-8062 for More Information



Managers Association

STMA MERCHANDISE ORDER FORM - ORDERS FOR SHIPMENT:

QUANTITY _____ COST _____
STMA OUTER BANKS GOLF SHIRT \$ 30.00

CIRCLE SIZE M L XL XXL (ADD \$4.00) CIRCLE COLOR WINE NAVY BLACK

_____ STEDMAN "LITE" GOLF SHIRT \$ 22.00 _____

CIRCLE SIZE M L XL XXL (ADD \$4.00)

CIRCLE COLOR WHITE RED ROYAL FOREST GREEN

_____ STMA HATS \$ 12.00 _____

CIRCLE COLOR BLACK WHITE NAVY

_____ LEE DENIM SHIRT \$ 40.00 _____

CIRCLE SIZE M L XL XXL (ADD \$5.00) COLOR BLUE BLACK MOCHA

_____ LEE COTTON SWEATER \$ 55.00 _____

CIRCLE SIZE S M L XL XXL (ADD \$7.50)

CIRCLE COLOR DARK GREEN WHITE NATURAL NAVY BLACK RED

_____ DUNBROOKE WINDSHIRT \$ 60.00 _____

CIRCLE SIZE M L XL XXL (ADD \$7.50) CIRCLE COLOR KHAKI NAVY BLUE

_____ LUNA PIER GOLF SHIRT 35.00 _____

CIRCLE SIZE M L XL XXL (ADD \$5.00)

CIRCLE COLOR ROYAL/BLACK BLACJ/KHAKI MAROON/NAVY

_____ LEE HOODED SWEATSHIRT \$55.00 _____

CIRCLE SIZE S M L XL XXL (ADD \$5.00)

_____ LUNA PIER HOODED PULL OVER \$55.00 _____

CIRCLE SIZE S M L XL XXL (ADD \$5.00)

_____ ANVIL HENLEY \$25.00 _____

CIRCLE SIZE S M L XL XXL (ADD \$5.00)

SHIPPING AND HANDLING CHARGE \$ 5.00

TOTAL - FOR MERCHANDISE TO BE SHIPPED _____

PAID: CIRCLE ONE CASH CHECK CREDIT CARD

CIRCLE ONE: CHECK ENCLOSED VISA MASTERCARD DISCOVER AMERICAN EXPRESS

CARD HOLDER NAME: _____

NUMBER: _____ EXP. DATE _____

SIGNATURE: _____

SHIP TO: _____

NAME: _____

STREET: _____

CITY: _____ STATE _____ ZIP _____

Mail to: STMA Headquarters
1375 Rolling Hills Loop
Council Bluffs, IA 51503

or Fax to: 800/366-0391



**STMA RESOURCE LIBRARY BOOK ORDER FORM
STMA MEMBER PRICES**

- Sports Fields: A Manual for Design, Construction and Maintenance**-By Jim Puhalla, Jeff Krans, Michael Goatley, 600 pages, hundreds of illustrations
STMA price only \$59.96- save \$15.00
- Fundamentals of Turfgrass Management**-By Nick Christians
STMA price only \$39.96- save \$10.03
- Destructive Turfgrass Insect Pests**- By Dan Potter
STMA price only \$55.96- save \$14.03
- Color Atlas of Turfgrass Diseases**- By James B. Beard
STMA price only \$63.96- save \$16.03
- The Mathematics of Turfgrass Maintenance: 3rd Edition**- By Mike Agnew and Nick Christians
STMA price only \$27.96- save \$7.00
- Practical Drainage for Golf, Sportsturf and Horticulture**- By Keith McIntyre and Bent Jakobsen
STMA price only \$47.96- save \$11.99

Available from:
STMA Headquarters
1375 Rolling Hills Loop
Council Bluffs IA 51503-8552
Phone: 800/323-3875, 712/366-2669
Fax: 712/366-9119

Order Form:

- _____ copy (ies) of **Sports Fields @ \$59.96**
_____ copy (ies) of **Fundamentals of Turfgrass Management @ \$39.96**
_____ copy (ies) of **Destructive Turfgrass Insects @ \$55.96**
_____ copy (ies) of **Color Atlas of Turfgrass Diseases @ \$63.96**
_____ copy (ies) of **The Mathematics of Turfgrass Maintenance: 3rd Edition @ \$27.96**
_____ copy (ies) of **Practical Drainage for Golf, Sportsturf and Horticulture @ \$47.96**

Please Note: Add Shipping & Handling \$5.00 @ 1st book-- Each additional book @ \$3.00

Bill my Credit Card: _____ Am Exp _____ Mastercard _____ Visa
Credit Card #: _____ Expiration date: _____
Signature: _____

Ship to:

Company Name: _____
Name: _____
Address: _____
City: _____ **State:** _____ **Zip:** _____
Phone (required): _____

Please check one:

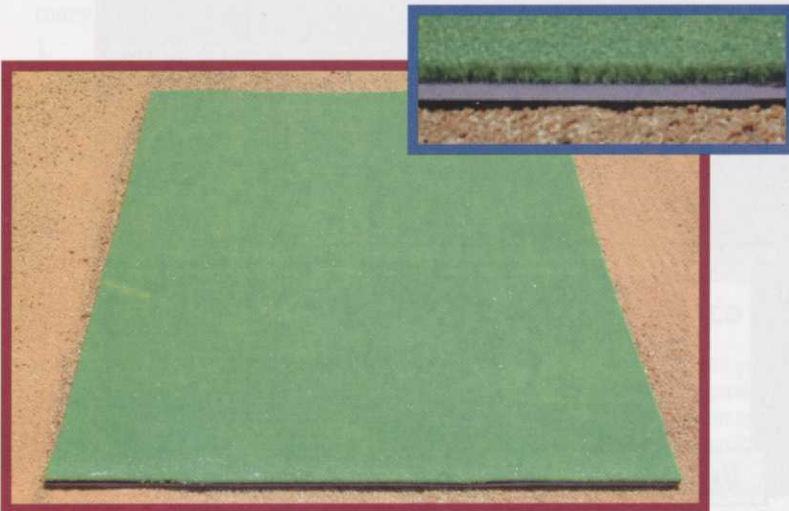
Check enclosed: _____ **Bill my company (Purchase Order required):** _____
Purchase Order #: _____

Protect Your Plate and Mound Areas During B/P With

Artificial Turf Mats by:



These tough mats will stand up to cleats. 3/8" Turf with 1/4" Foam Pad. They are easy to handle and will save you time by protecting your dirt areas before games.



6' x 12' Homeplate Mat
Includes Painted Plate and Batter's Box

6' x 12' Pitcher's Mat

4' x 12' Pitcher's Mat

4' x 6' Single Batter's Mat

6' On Deck/ Fungo Circle

Available For Immediate Shipment

Groundskeeper's Tip: Moisten area under mats before putting mat in place. When mat is removed before game, dirt will be game ready.

“Play Ball”

1-800-767-BALL

510 W. Arizona Avenue * DeLand, FL 32720

904-943-6222 Fax 904-943-4060

Website: www.ballproducts.com

E-Mail Address: baseball@ballproducts.com

Windscreens and Batter's Eyes by Ball Products

One Piece or Multi-piece Batter's Eyes
Constructed to Your Exact Specifications
Edges Hemmed and Grommetted
Rear Grommet Strips



Rear Grommet Strips



Reinforced Edges

Available in all of Our Quality Windscreening

DuraScreen-*"Simply the Best!"*-Due to its unique patented coating process and construction, DuraScreen is the most durable and attractive windscreen available. **Construction:** 80% Bonded Weave/1000 Denier Polyester **Tensile Strength:** 235x200 pounds **Weight:** 9.52 ounces per square yard **Hems and Seams:** Four-ply with 18 ounce vinyl reinforcement **Grommets:** #2 brass grommets every 12" **Thread:** Bonded Polyester #138 (carbon treated for U.V. resistance) **Weathering:** 5000 hours in Weather Meter (equivalent to 7 to 8 years in Florida climate). Material retained 90% of its original strength and 95% of its color.

VCP-Vinyl coated polyester woven from 3 ounces per square yard polyester yarn which is coated to 4 ounces per square yard dark poly-vinyl chloride **Tensile Strength:** Grab Method - 230x200 pounds; Strip Method - 200x140 pounds **Hems:** 4-ply reinforced with heavy 18 ounce vinyl **Thread:** #138 bonded polyester **Grommets:** #2 brass grommets every 12"

Poly Pro-100% Polypropylene **Weight:** 5.2 ounces per square yard **Construction:** 28x14 weave lath-leno Open mesh 80% construction or Closed mesh 95% construction **Tensile Strength:** Grab Method - 285x140 pounds **Hems:** 4-ply reinforced with polypropylene webbing **Thread:** #138 bonded polyester **Grommets:** #2 brass grommets every 12"

DOC'S DUGOUT - An Inning From Our Past - Dr. William H. Daniel - Part II

continued from page 10

were effective on crabgrass but also reduced the *Poa annua* population and inhibited its germination. Through field trials, greenhouse experiments and field-testing on golf courses a procedure was developed which essentially eliminated *Poa annua* from golf course turf. Even though Bill discovered that both lead arsenate and calcium arsenate were effective, he promoted the use of calcium arsenate because it was less expensive, faster acting and perhaps less toxic to wildlife. According to one of Bill's former students and golf course superintendent, Charles Tadge (Vineyard GC-Cincinnati), "Many of us had great success with the calcium arsenate program. However, there were two primary deficiencies with the program:

1. The process took several years to achieve the desired results. As the arsenic accumulated in the soil the *Poa* became sickly and eventually died. A plan was needed for the replacement of the *Poa* with a desirable turf. There would be a transition period with less than desirable turf conditions.

Also good drainage was a must since it was observed that, in areas that held water, the calcium arsenate would kill the *Poa* much faster and make the establishment of the desired species more difficult.

In Bill's enthusiasm for the program he sometimes did not emphasize strongly enough the problems that would be encountered by the loss of *Poa* on greens or fairways. Some superintendents got into real trouble with their members, consequently, the arsenate programs were only successful when preceded by good communication and information about the risks.

2. During the early experiments with the arsenicals it was discovered that they worked best when available phosphorus was reduced or eliminated. Dr. Bill was so successful in promoting the reduction or elimination of phosphorus in fertility programs that the erroneous concept has survived to this day - that if phosphorus is reduced or eliminated the *Poa annua* will be reduced or eliminated. This has not been the case."

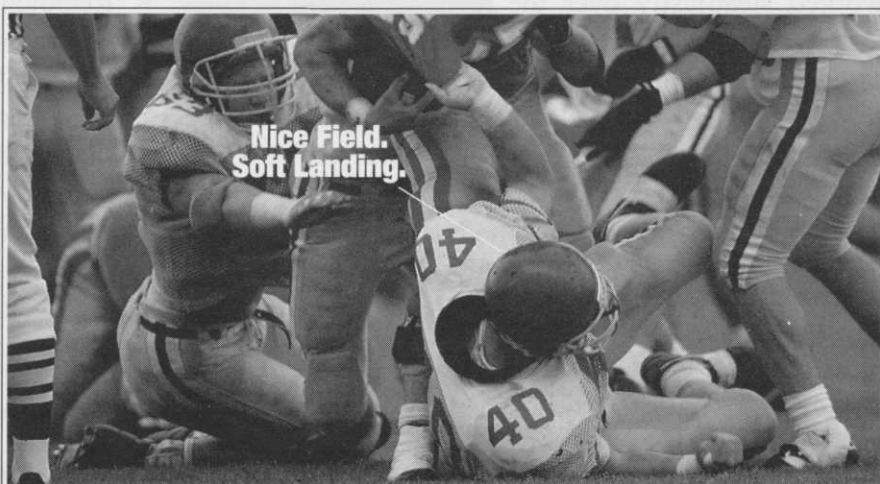
As a result of this early work, Bill's ideas and encouragement helped convince

Chipman Chemical Company to produce a pelletized calcium arsenate, "Chip Cal", which was marketed in the 1950's.

"When you're out seeing so many problems, problem solving forces one to package ideas. You absorb from what's out there, you learn a little from each situation, and that makes you want to be more useful - and that lets more work get done."

Dr. William H. Daniel

(Part III will appear in next month's issue and will discuss Bill Daniel's contributions in the area of soil technology and sports field construction.)



Turfco Helps You Build A Turf That Gets Noticed.

Turfco offers you a strong team of turf building equipment. They're the fastest and most versatile equipment to let you build hardier and healthier turf. Your sports fields become safer to play on and easier to maintain. Originators of Mete-R-Matic® top dressers in 1961, Turfco's professional equipment gives your field a look that gets noticed.

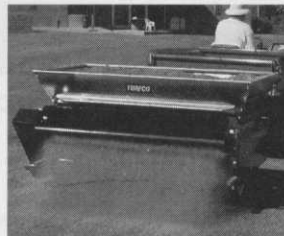
Economy Aerator

Now you can afford to breathe life into any sports field. This low cost, 62" aerator has no hydraulics or mechanical linkages for easy use and low maintenance. Hooks up to any vehicle in seconds.



Precision Top Dresser

Fast, uniform, versatile. Patented chevron belt lets you handle top dressing, lime, crumb rubber, gypsum, calcine clay, compost and even overseeding with precision. Level fields and amend soil consistently.



Large Area Top Dresser

Large, 4 cubic yard capacity with patented chevron belt applies material with precision. Top dress from 1/32" to 6" to quickly handle large areas. Material conveyor and spinner attachment for added versatility.



For details and the name of your local dealer, call

1-800-679-8201

Turfco Manufacturing Inc.

1655 101st Avenue Northeast
Minneapolis, MN 55449-4420

*Choice Performers,
Choice Fields.*

TURFCO®

New Jersey Turfgrass Association Salutes Dr. Henry Indyk

Expo 2000, the 30th Anniversary of the establishment of the New Jersey Turfgrass Foundation, is dedicated to Dr. Henry Indyk. Henry, or just plain "Hank" to many, was an original founder of the Association and has worked steadfastly over the last 30 years on every project to advance the turfgrass profession education and research programs at the University, as well as the goals and objectives of NJTA and the Turfgrass Foundation



A long-time STMA member, Henry also was awarded the prestigious Harry C. Gill Memorial Award, and was named the 1999 sportsTURF "Man of the Year." He also was instrumental in the develop-

ment and continuation of the STMA Certification Program. Those of us who know Henry, know of his tireless efforts in the continuing growth of the STMA.

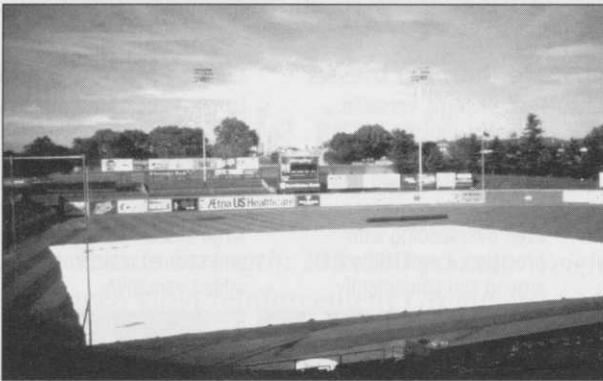
Among his other numerous accomplishments, Henry has consulted and lectured from coast to coast and as far away as Australia. Besides his STMA awards, he has been recognized for distinguished service and high achievement by every major organization in the industry. Here are a few of them:

- Recipient of several National and State Awards
- New Jersey Turfgrass Hall of Fame Award
- Rutgers University President's Award
- Irrigation Association Man of the Year
- Golf Course Superintendents Association of New Jersey Distinguished Service Award

Congratulations Henry, on your "Lifetime Distinguished Service Award" and the dedication of Expo 2000 in your honor. There is no one more worthy of this distinction.



RainBuster Polytarps



- Black/White reversibles for the **ULTIMATE A-L-L SEASON** turf protection!
- **Lightweight AND Economical!**
- **Sizes from Golf Greens to Soccer Fields.**

Complements our complete line of vinyl covers, patented zipper systems, geotextiles, grids and more! Call for your **FREE BUYER'S GUIDE** now.

1-800-621-0146

M. PUTTERMAN & COMPANY, INC.

4834 South Oakley • Chicago, Illinois 60609

Visit our web site at:
www.mputterman.com

KLAWOG®

A New Foundation for Sports

- **Easy & Quick Installation**
- **Fast Durable Repairs**
- **The Professionals Product of Choice**



**Without
KLAWOG**

**Under Your Feet, Your Mound and
Batter's Box ARE NOT COMPLETE!**

Discover The KLAWOG Advantage Today!

Call **1-800-745-9322** for your nearest distributor.
www.klawog-klacon.com

Chapter Events

continued from page 7

For information on the Iowa Chapter or upcoming activities, contact: Lori Westrum at The Turf Office at (515) 232-8222 (phone) or (515) 232-8228 (fax) or e-mail: Lori@iowaturfgrass.org.

Keystone Athletic Field Managers Organization (KAFMO/STMA)

The 5th Annual KAFMO Athletic Field Conference will be held in Grantville, PA, on February 9, 2001. The event will feature Boyd Montgomery of the Sylvania (Ohio) Recreation Department, along with seminars by KAFMO members, the annual awards ceremony, and vendor exhibits.

For information on the KAFMO/STMA Chapter or upcoming events, contact: Dan Douglas, Reading Phillies Baseball Club, at (610) 375-8469, extension 212 or via the chapter e-mail address: kafmo@aol.com.

Wisconsin Sports Turf Managers Association

Wisconsin Sports Turf Managers are encouraged to attend the Winter Expo in Madison, Wisconsin on January 9 and 10, 2001. Speakers from across the US will be featured. The program includes three concurrent sessions related to the sports turf industry. For registration information, contact Audra at (608) 845-6536.

The WSTMA board will be meeting in December to discuss the 2001 season. Topics for discussion will include locations for the 2001 Chapter meetings and elections for the 2001 Board. If you are interested in hosting a Chapter Meeting or in running for the Board, please contact Rich Riggs at the phone number listed below.

For more information on the Wisconsin Chapter or pending events, contact: Rich Riggs, R. H. Rettler & Associates, Inc. at (715) 341-2633.

The Sports Turf Managers Association of Arizona

For information on the chapter or other upcoming events, contact: Bill Murphy, City of Scottsdale Park, Recreation and Facilities Manager, at e-mail: bmurphy@ci.scottsdale.az.us or phone: (480) 312-7954.

The Colorado Sports Turf Managers Association

For information on the Colorado Chapter or upcoming activities, log on to the Chapter's Web site: www.cstma.org or call the CSTMA Chapter Hotline: (303) 346-8954.

Florida Chapter #1: STMA

For information on the Florida Chapter or pending activities, contact: John Mascaro at (954) 341-3115.

Minnesota Chapter:STMA

For information on the Minnesota Chapter or other upcoming events, contact: Ron Werner at (507) 634-1176.

Southern California Chapter:STMA

For information on the Southern California Chapter or pending activities, contact: Ron Kirkpatrick at (858) 438-1755.

The Gateway Chapter Sports Turf Managers Association

For information on upcoming events or on the chapter, contact: Mark Jennings at (314) 983-5345 or Jim Anthony, Saint Louis University, St. Louis, MO, at: (314) 977-2956.

Indiana Chapter: STMA

For information on the Indiana Chapter or pending activities, contact: Terry Updike, B & B Fertilizer, at (219) 356-8424.

The Mid-Atlantic Field Managers Organization (MAFMO Chapter STMA)

For information on the MAFMO Chapter or pending activities, contact the Hotline: (410) 290-5652.

The Michigan Sports Turf Managers Association

For information on the Chapter or other pending events, contact: Rick Jurries, West Ottawa Public Schools, at (616) 738-6974 or click on your computer to www.mistma.org to visit the chapter's website.

continued on page 18



The Bird With Attitude.

A rotor that knows it's good and has the performance to back it up. Introducing Rain Bird's® new Falcon® 6504 rotor.

The Falcon® 6504 rotor features the best of the Falcon® rotor plus new Rain Curtain™ nozzles for increased uniformity in the mid and long ranges, and a new built-in third port that improves close-in watering. This means fewer dry spots and greener grass with less water. *Same toughness. Same reliability. Superior performance.*

For more details on the Falcon® 6504 rotor and the complete line of Rain Bird® products, call 1-800-458-3005.

RAIN BIRD®

Other "COOL Stuff" To Do in Tampa

Tampa - The Heart & Soul of Florida. From the excitement of the Museum of Science & Industry to the exotic wildlife of the Lowry Park Zoo, Tampa's unique flavor will stir you, heart and soul.

The Seminar on Wheels Tours will give you a taste of the Sports venues in the Tampa area and the Wheels Sites Tour will take you to a few of Tampa's more well known "fun" spots. But, that's not all there is to the city. Check it out!

The Tampa Marriott Waterside (our Conference Headquarters Hotel) is within walking distance to the Channelside Entertainment and Shopping Complex at Garrison Seaport, the Florida Aquarium and the Ice Palace Sports Arena, and minutes from the Tampa Bay Performing Arts Center, Tampa Museum of Art, TPC at Tampa Bay and Florida's fabulous beaches! Or, if you'd like, you can hop on the Tampa/Ybor Trolley for a nostalgic, energy-efficient link between destinations.

The Tampa Bay Performing Arts Center's four theatres present world-class entertainment from Broadway to pop music to dance to local theater, and is one of the top 10 performing art centers in the nation.

Within walking distance of the Performing Arts Center is the Tampa Museum of Art, featuring the nationally-renowned permanent collection of classical antiquities plus traveling exhibitions of photography, contemporary art and sculpture. A new Florida Gallery features the state's acclaimed and emerging artists.

If your appetite for fun takes you further, the Museum of Science and Industry features more than 450 hands-on, "minds-on" exhibits to challenge young and old alike. Permanent exhibits include a planetarium, one of only six Challenger Centers in the US, a Tesla coil and hurricane exhibit where you can witness the awesome windpower of a hurricane first hand.

Or check out the Lowry Park Zoo, one of the top three North American zoos of its size in the country. Lowry Park is a 26-acre open-air zoo with a collection of natural habitats housing more than 1,500 animals. Other features include a free flight aviary, petting zoo, research center and

the Florida Manatee and Aquatic Center. Lowry Park also includes a native Florida exhibit, Primate World and Asian Domain.

And the list goes on, and on! Whatever your taste, the Heart & Soul of Florida is sure to accommodate.



F I V E

GREAT REASONS WHY
YOU SHOULD CONSIDER
BULL'S EYE Bermuda
FOR YOUR NEXT
PROJECT.

- Virtually No Seedheads
- Good Shade Tolerance
- Deep Blue-Green Color
- Medium-Wide Blade For Texture Contrast
- Can Be Mowed With Rotary or Reel



BULL'S EYE
Bermuda

WEST COAST
TURF
GROWERS AND INSTALLERS OF
PREMIUM QUALITY SOD AND STOLONS

www.westcoastturf.com 760/360-5464 800/447-1840 FAX: 760/360-5616

STMA Announces Formation of SAFE

The Sport Turf Managers Association (STMA) announces the formation of the Foundation for Safer Athletic Field Environments (SAFE). This Foundation is being formed as a 501(c)(3) corporation for the purposes as outlined in the SAFE Mission Statement: "To support sports field specific research, educational programs and environmental concerns to promote user safety."

STMA is backing its commitment to SAFE with an initial contribution of \$100,000. These funds are the first endowment for the Foundation, and only the income from this contribution will be used by SAFE.

The first SAFE Board of Trustees has been elected. Bob Campbell, Dr. Tony Koski and Monty Montague were elected from the STMA Board of Directors. Don St. Denis, The Toro Company; Paul Pesci, Textron Turf Care; and Mike Scaletta, John Deere; were elected to represent the potential donor group category. To represent the "other" category, Bob Patt, Mike Schiller and Dr. James Watson were elected. According to the Bylaws, SAFE and STMA Executive Director, Steve Trusty, automatically serves on the Board of Trustees for the Foundation. One of the first duties of the Board of Trustees will be to elect officers and establish the Finance, Research, Scholarship and Education Committees.

STMA President, Rich Moffitt, says, "The STMA Strategic Planning initiative identified the need for sports specific research as one of our top priorities. I speak on behalf of the Association to note the formation of this Foundation as another positive

step forward in our continued focus on helping increase the level of professionalism throughout the sports turf industry."

Trusty adds, "The Foundation will be able to focus on the research needs of the industry, provide the methods for obtaining funds, and provide potential tax benefits to the donors. This is a broad reaching initiative as noted in SAFE's Vision Statement: 'To use science as the foundation to benefit

sports fields in areas of playability, user safety, and the environment.' The results of this Foundation's support will assist athletes at all levels with safer playing field environments. This is an excellent fit with STMA's Positioning Statement: 'Providing the best sports surfaces for all levels of play.'"

For information on SAFE, please contact STMA Headquarters.



Do you have items to contribute that could be included in the STMA silent and live auctions to be held at the STMA Annual Conference and Exhibition in Tampa in January of 2001? Proceeds of the auctions will continue to fund the STMA Scholarship Programs. With the formation of SAFE, the scholarship program will be administered through the Foundation, bringing tax benefits to those who make auction donations.

COVER YOUR ASSETS

**Protective Field,
Court & Floor Covers
and Windscreens**



Visit us at booth #616 at this year's STMA show.

8 0 0 - 4 8 8 - 3 5 9 2

How Do You Do...?

The Question -- How Do You Reap the Benefits of an STMA Conference?

Answered by Mike Hebrard, Athletic Field Design

Editors Note: This article was first printed in the July/August 1999 newsletter after Mike attended the Conference & Exhibition in Mesa, Arizona. SW

- 1) Be on time for meetings and tours. If you get there about 15 minutes early, this will allow you to hook up with friends and new acquaintances so that you can sit together.
- 2) Try and sit with someone new on each leg of a tour or meeting. You'll be surprised at how much you have in common and the information that you can share.
- 3) Try to thank each speaker, and congratulate each award winner. This will make both of you feel special.
- 4) Stop at every exhibitor's booth and at least say "hi." Sometimes their company sign doesn't really say what they do. Remember, they have a lot of money invested in being at the show and, if they feel they don't get enough traffic, they might not want to come back. They do talk to other exhibitors and have to report back to their parent company on whether or not it was a worthwhile show.
- 5) Try to bring a door prize, something from your school, business, parks department, etc, such as a hat or t-shirt. It's great fun to win a prize amongst your peers. Some of the professional stadium managers have been able to get some pretty neat items, such as autographed pictures and team related clothing.
- 6) Fill in all evaluation sheets and add comments if they apply. If you feel that the room conditions were poor, you'd like to hear a different slant on that topic, or even if your speaker was exceptional, write it down.
- 7) Don't be bashful - be social - join a group and get to know them. Some of the best things I have learned are after conference "formal" meeting times. When I brought my wife and son to Orlando a few years ago, they were amazed at how many people I knew throughout the country. It gave my son a chance to ask Dale Getz from Notre Dame if the Irish really do paint their helmets for every football game. Conferences are **always** a great networking tool.
- 8) Bring plenty of business cards, I don't care how many I bring, I always seem to run out. If your employer or facility doesn't provide you any, try making your own on the home computer. They have some pretty neat formats.
- 9) Get your Conference registration in early and avoid the rush. The more our organization grows, the more last minute paperwork Headquarters needs to process.
- 10) Tell others who didn't make it what they missed and why they should go next year. I always try to have extra membership forms with me to hand out to other sports turf managers.
- 11) Don't leave anyone sitting by themselves. If you see a table with one person sitting there, go up and introduce yourself and ask if they mind if you join them. Sometimes neither person knows anyone else, or isn't sure how to start a conversation. Not everyone is like me, where if you ask me what time it is, I'll tell you how to build a watch. Remember, that's why we are there, to learn from each other.

And the list could go on and on. These are just my suggestions, I'm sure you have some ideas of your own. The important thing to remember is that it's YOUR responsibility to get the most out of your Conference experience.

**YOUR "ONE-STOP SOURCE"
FOR AMERICA'S LEADING
BASEBALL SURFACES & SUPPLIES**



THE PROFESSIONAL'S CHOICE
... SINCE 1922

USED BY OVER 100 PRO TEAMS,
OVER 600 COLLEGES, PLUS THOUSANDS
OF TOWNS & SCHOOLS WORLDWIDE.
SPECIAL MIXES FOR INFIELDS,
PITCHER'S MOUNDS & HOME PLATE AREAS.

**REGIONAL INFIELD MIXES
AND RED WARNING TRACKS
FOR EVERY STATE & CLIMATE!**

PLUS INFIELD CONDITIONERS
TO IMPROVE EXISTING INFIELDS:

IF TOO HARD AND POORLY DRAINING!



THE REDDER, LESS DUSTY, MORE UNIFORM
SOIL CONDITIONER & DRYING AGENT
"SUPER-RED" FOR INFIELDS
"SUPER-GREEN" FOR TURF
FOR CONSISTENT INFIELD CUSHION
IN WET OR DRY WEATHER!

IF TOO SOFT & DUSTY!

STABILIZER®

FOR FIRM, YET RESILIENT, PLAYING SURFACES

TO QUICKLY DRY INFIELDS!

The Original & Most Absorbent is Now

NEW & IMPROVED GRANULAR

DIAMOND-DRY.



OVER 200 OTHER INFIELD PRODUCTS!

New Lower Prices!

FENCEGUARD®
Safety Covers for Chain Link Fence
Now in 6 Colors!

HOLLYWOOD® BASES · FIELD MARKING MACHINES
TAMPERS · DRAG MATS · YANKEE® · RAKES
WALL PADDING · WINDSCREEN · RAIL PADDING
BATTING PRACTICE COVERS · RAIN COVERS
PITCHER'S MOUND & BATTER'S BOX PADS
ON-DECK CIRCLES WITH TEAM LOGOS
PERMANENT FOUL LINES & MUCH MORE!

**FREE INSTRUCTIONAL BROCHURES
DISTRIBUTION CENTERS NATIONWIDE!**

800-247-BEAM

908-637-4191 / FAX 908-637-8421

PARTAC PEAT CORPORATION
KELSEY PARK, GREAT MEADOWS, NJ 07838

*"The best infield mix I've ever used."
— GEORGE TOMA*

Members on the Move

Harvey Crenshaw, Louisiana State University, has taken a new position at the University as Grounds Manager. Harvey's new phone number is 225/578-4327.

Marshall Jennings, formerly with the City of Ripley (TN) Parks District, has moved to the position of Sports Turf Manager at Tulane University, New Orleans, LA. Marshall can now be reached at 504/862-8251.

Tim Swaim, former Superintendent/Park Services Maintenance for Henrico County (VA), is now with Landscape Supply Incorporated. You can reach Tim at 804/675-3050.

Mike Varner, formerly with the Washington Redskins, has taken a position with Floratine Products in Collierville, TN. Mike can be reached at 901/853-2898.

CONGRATULATIONS GUYS!

If you, or anyone you know, has changed positions, let us know so we can help Spread The Word!

Steve Erickson's new title was incorrectly listed in the last issue of the newsletter. He is currently Supervisor/Field Maintenance for the Pittsburgh Pirates. Steve can be reached at 412/323-7690. I apologize for the error. *SW*

THATCH-MASTER 48" & 60" FINE TURF VERTI-CUT



1. Commercial quality fine turf verti-cut
2. PTO powered - 20 to 30 H.P.
3. Thin (.060) blades do NOT leave grooves
4. Extremely low maintenance
5. Fast

Turf Specialties, Inc.
320 THIRD STREET, S. W. * WINTER HAVEN, FL 33880
TELEPHONE (863) 293-1657



*Sod suppliers of the
following sandbase
and mineral base*

- **Chicago Bears**
- **White Sox**
- **Cubs**
- **Cleveland Browns**
- **Baltimore Raven's Practice Field**
- **Detroit Tiger Stadium**
- **Iowa Cubs**
- **Kane County Cougars**
- **Golf Courses**

Evergreen Sod Farm

3800 E. 11000 N. RD
Peotone, Illinois 60468
708.258.6100 fax 708.258.3012

Chapter Events

continued from page 13

Midwest Chapter: STMA

For information on the Midwest Chapter or pending activities, call: The Chapter Hotline (847) 622-3517.

The Northern California Chapter of the Sports Turf Managers Association

For information on the Nor-Cal Chapter or pending events, contact Janet Gift at 530/758-4200.

The North Texas Sports Turf Managers Association

For information on the North Texas Chapter or pending activities, contact: Rene Asprien, Diamond Pro, at (800) 228-2987 or Dr. James McAfee, Texas A & M University, at (972) 952-9220, or log onto www.ntstma.org to check out the website.

The South Texas Sports Turf Managers Association

For information on the chapter or upcoming events, contact: Tom McAfee, Nelson Wolff Municipal Stadium, San Antonio, at (210) 207-3754.

Tennessee Valley Sports Turf Managers Association

For information on the TVSTMA Chapter or upcoming events, contact: Bill Marbet, Southern Athletic Fields, Inc. at (931) 380-0023 or (800) 837-8062.

The Mid-South Chapter STMA

For information on the Mid-South Chapter or upcoming events, contact: Robert Bodi at TURF419@aol.com or Jim Calhoun at (901) 755-1305.

Chapters On The Grow

New Jersey - The Sports Field Managers Association of New Jersey is participating with the New Jersey Turfgrass Association in presenting a day of Athletic Field Sessions on Thursday, December 14, during NJTA Expo 2000 held at the Trump Taj Mahal in Atlantic City, New Jersey. Expo 2000 runs from December 12 - 14, 2000.

The Athletic Fields and Parks morning session runs from 10 AM to Noon on December 14th. On the program are: Tim Moore, Secretary of the national Sports Turf Managers Association and Park Manager for the National Capitol Park and Planning Commission, Wheaton, MD, presenting "STMA Chapter Foundation and the Certified Sports Field Manager Program" and "Effective Maintenance Programs for Sports Fields;" and Dr. Richard Buckley, Coordinator, Plant Diagnostic Lab, Rutgers University presenting "Diagnosis of Pest Problems."

The afternoon session runs from 1:00 to 3:00 PM. Speakers include: Eugene Mayer, Consultant, Columbus Clippers, Marysville, Ohio, addressing, "Developing a Fertilizing and Liming Program for Sports Fields"; Ann Waters, Director of Outreach, DEP Representative, giving an "Update on Pesticide Regulations"; Ray Cipperly, Head Groundskeeper, Somerset NJ Patriots, addressing "Keeping Infields in Playable Condition"; and Dr. Henry Indyk, Professor Emeritus, Rutgers University, speaking on "Procedures for Turfgrass Establishment."


For information on this event, the forming chapter or other upcoming events, contact: Jim Gavigan, Lesco, at (732) 248-8979 or Eleanora Murfitt, Director, Township of Clinton Parks & Recreation Department, at (908) 735-5999.

Kansas City, Missouri - Kansas area: For information on MO-KAN STMA, the newly forming Chapter, or on upcoming events, contact: Trevor Vance at 816/504-4271; Gary Custis at 816/460-6215; or Jody Gill at 913/681-4121.

Nebraska: For information on the forming chapter or upcoming events, contact: Gregg Bostelman, City of Grand Island, at (308) 385-5426.

New York: A chapter is forming in Central New York. The group will meet at 10:30 AM on the first Wednesday of each month at the National Soccer Hall of Fame.

Interested? Want more information? Contact Kevin Meredith, National Soccer Hall of Fame, via e-mail at Kevin@wpe.com or by phone at (607) 432-2953.

The Vision  The Reality
rettler corporation

- Landscape Architecture
- Engineering
- Land Surveying
- Site Construction Management
- Maintenance Programming
- Site Maintenance

Our professionalism and dedication for safety first on any athletic field coupled with complete service and quality make us a valued partner for your project.

"Rettler Corporation Turns Visions into Reality"

3317 Business Park Drive .. Stevens Point, WI 54481 ..
Telephone .. 715.341.2633 .. Fax: 715.341.0431 .. Email: info@rettler.com

Headquarters Report

by Steve Trusty, Executive Director

It has been a busy couple of months since I last wrote to you. Your Board of Directors met in Arlington, Texas, the end of September. They approved the Strategic Plan that STMA will be operating under for the next several years. More information will be coming out on that. They approved the 2001 Budget and Management Agreement. We look forward to working with all of you during the next year.

I feel the biggest step taken was the approval of the formation of SAFE, the Foundation for Safer Athletic Field Environments. SAFE was established to accept and disseminate funds for research, scholarships and education. SAFE is being formed as a 501 (c) 3 Corporation. This means that, under current tax laws, individuals and companies can make donations to SAFE that will be tax deductible, charitable contributions. The way the foundation is set up, overhead will be kept at a minimum and more funds can be used for the intended purposes. A separate Board of Trustees that are appointed by the Board of Directors of STMA will control the

affairs of SAFE. One-third of the SAFE Board must be STMA Board Members; one-third must come from potential donor groups and the other one-third from any other groups that the STMA Board feels will advance the work of the Foundation.

STMA started SAFE with a \$100,000 endowment. Only the income from that endowment can be used by the Foundation. The Foundation will accept funds to be put into endowments, funds tagged for specific uses, and funds to be used at the discretion of the Board. The STMA Scholarship program and the annual auctions and raffles will now become a function of the Foundation. As soon as the proper paperwork is received from IRS, persons donating to these events will be able to utilize these donations as deduction on their tax returns to the fullest extent of the law. Watch for more details coming soon.

STMA also has been busy with various outreach programs. We had a booth and sponsored a program at the National Recreation and Parks Association show in Phoenix. The purpose of the program was to help parks directors learn effective sports field maintenance and provide them with resources for more information. The purpose of the booth was to acquaint attendees with what STMA has to offer members. In many cases, the people that attend the NRPA show employ STMA members. We want them to know what you do, why it is important and to encourage involvement in STMA, the Conference and other programs. We felt it was a very worthwhile show. We provided information to a lot of Park Directors.

As a part of the Strategic Plan, STMA will be reaching out to students to let them know about the career potential in sports turf. As part of that initiative I attended the annual FFA Convention in Louisville in October. What a great bunch of about 40,000 young people. Being a part of an event like that lends renewed hope for our great country.

Upcoming outreach programs include the Baseball Winter Meetings and Trade Show, the High School Athletic Directors Conference and several state turfgrass conferences.

I hope to see you on one of my trips and especially in Tampa in January. May you and yours have a most joyous and blessed holiday season.



Your home field advantage.



**Premium sports fields services:
construction / renovation / consulting**
800.897.9714

*Services include sports field equipment & product distribution.
Please call for our complete reference contact list.*

110 S. Cousino Rd. Oregon, OH 43618 / 419.836.5730 / athleticfieldservices.com

Stop by and visit us at the show, Booth 717

EVERGREEN™

MEMBER
Sports
Turf
Managers Association

THE PROVEN TURF GROWTH BLANKET

- Earlier spring green-up
- Faster seed germination
- Deeper root development
- Delays dormancy in fall
- Ideal winter blanket
- Best for quick turf repairs
- Available in any size
- Choice of 3 and 7 year warranty



CALL TOLL FREE
1-800-387-5808

COVERMASTER INC., REXDALE, ON, M9V 5C3
TEL 416-745-1811 FAX 416-74-COVER (742-6837)

WEB: www.covermaster.com
E-MAIL: info@covermaster.com

COVERMASTER™ COVERMASTER COVERMASTER

MASTERS IN THE ART OF SPORTS SURFACE COVERS

**Turf
Management
Made Easy!**



Proven results



Deeper root development



Any custom size cover



Anchor pegs supplied

STMA Headquarters
1375 Rolling Hills Loop
Council Bluffs, IA 51503-8552

PRSR STD
MAIL
U.S. POSTAGE PAID
OMAHA NE
PERMIT #705