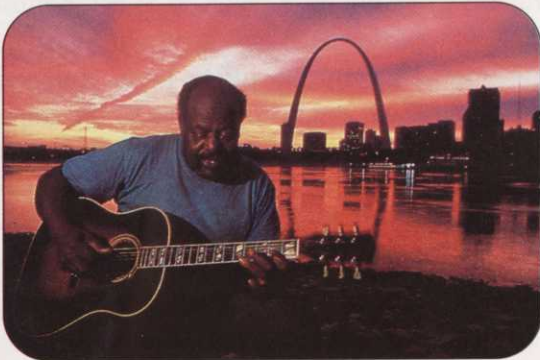




## Come Through the Gateway to the 21st Century

**H**ave YOU made your plans yet to attend the 2000 STMA Conference & Exhibition? Do it soon - you won't want to miss this one!

We hope you have received your Conference packets already so you know what we have in store for you. If you have not received your packet, or if you'd like extras, give us a call at Headquarters at (800) 323-3875 and we'll make sure you get what you need.



© Gail Mooney

The Conference packet gives you the details of the general educational sessions including Mike Veck (*see page 4*), Dr. Tom Jadin (*see page 9*), the concurrent sessions, the workshops and the Round-Table discussions. What you might not know is that there are lots of other attractions in St. Louis to check out either before or after the Conference. For instance, there's Laclede's Landing where music echoes off the cobblestone streets and bounces between clubs housed in restored 19th century warehouses. Once the center of the city's bustling riverboat trade and just minutes away from the Regal Riverfront, the Landing's historic red brick warehouses are now home to nightclubs, restaurants and specialty shops. The lively district is active all week and rocks until the wee hours on weekends.

There are also Anheuser-Busch Brewery Tours which include the historic Brewhouse and the Budweiser Clydesdale stables, as well as the lager cellar and packaging plant. AND The St. Louis Cardinals Hall of Fame



The St. Louis landmark brewery tours feature visits to the bottling plant, and the stables of the world famous Clydesdales.

Museum, which shares a site with the International Bowling Museum and Hall of Fame. Housed inside are more than a century of St. Louis baseball history and the 5,000 years of bowling history. As you'll see in your packet, we've given you the opportunity to see this on Wednesday. OR you have the choice of an optional Seminar on Wheels Tour OR a special "Category" Session on Wednesday. With the options on Saturday, you can either Roll on the River or join in a Mystery at the Bissell Mansion. AND on Sunday - we've got an optional area attractions tour and an informal gathering in the Regal Riverfront's Dugout Sports Bar to watch the NFL playoff games.

AND there are the Trade Show **and** the Raffle and Auctions **and** the Awards Banquet and on and on and on! Make your plans NOW - come for the education and networking and STAY for the FUN! See you there!

Cover photos for this issue and the July/August issue courtesy of the St. Louis Convention & Visitors Commission.



Proud to Support STMA



## SPORTS TURF MANAGER

Official Newsletter of the Sports Turf  
Managers Association  
1375 Rolling Hills Loop  
Council Bluffs, IA 51503-8552  
712/366-2669, 800/323-3875  
(FAX) 712/366-9119  
(e-mail) SportsTMgr@aol.com  
(world wide web)  
<http://www.aip.com/STMA>



Volume XVII Number 5  
September/October 1999

### OFFICERS

#### President

Stephen H. Guise  
Marina Landscape, Inc.

#### President-Elect

Rich Moffitt  
Saint Louis University

#### Commercial Vice President

Bob Curry  
Covermaster Inc.

#### Secretary

L. Murray Cook  
Ballpark Services, LLC

#### Treasurer

Bob Patt  
Thurman Munson Memorial Stadium

### BOARD MEMBERS

#### Tom Burns

Texas Rangers Baseball Club

#### Bob Campbell

University of Tennessee

#### Dr. Tony Koski

Colorado State University

#### Tim Moore

M-NCPPC, Wheaton Maint. Facility

#### Lynda Wightman

Hunter Industries

#### Immediate Past President

#### Mike Schiller

Rolling Meadows Park District

### NATIONAL HEADQUARTERS

#### Executive Director

#### Steve Trusty

#### Support Staff

#### Suz Trusty

### NEWSLETTER EDITOR

#### Stephanie Watts

Trusty & Associates

### TECHNICAL EDITOR

#### Dr. Gil Landry, Jr.

The University of Georgia

Sports Turf Manager is a publication of Sports Turf Managers Association (STMA). It is published bi-monthly and is free to STMA members. Sports Turf Managers' goal is to promote the mission of the association by providing a channel for communication between the representatives of the board and its constituency. STMA is not responsible for the opinions expressed in this publication. Address changes, advertising, photographs, and editorial inquiries should be directed to the executive offices. © 1999 Sports Turf Managers Association. All Rights Reserved.

# President's Message

## Black Eyes Take Time To Heal!

by Steve Guise, President

It drives me crazy to read in the newspaper that brand new fields are being referred to as "cow pastures" and are being tilled under without a single game played on them. Aren't these fields being designed and built using USGA specifications or equally exacting and well-developed soil specifications? At the very least, aren't these owners using a licensed agronomist to consult and provide quality control during the design and construction of these fields? How can we as professionals continue to allow these fields, in some cases, high profile fields, to be installed or maintained improperly? It's not only extremely expensive, but also frustrating, I'm sure, for all involved. And every time one of these situations occurs, it's a black eye to our industry and to our organization.

It is critical for the STMA membership to reach out to architects and contractors to provide leadership and direction in field design. Who better to provide input in a field's design than the individuals that have the experience in maintaining such fields? Professional, educated sports turf managers know the basic "dos and don'ts" in construction methodology, understand the long-term effects of the various components involved in construction, and have extensive knowledge in the multiple aspects of maintenance procedures and their impact on the field.

Agronomists experienced in the soil profile being designed are the ones who should be driving the design to meet the owner's and potential field users' needs. Too often, the budget is the major factor in design, without consideration to the long-term costs involved with "fixing" a poorly designed and constructed field. Frequently, the designer's lack of knowledge in the areas of athletic fields and the impact of such elements as drainage, soils,



Steve Guise

and amendments on these fields are the cause of the problems.

There are architectural firms out there that discovered this issue a number of years ago and provide a professional design team made up of agronomists, soil testing labs and sports turf managers. I take my hat off to these companies for their ability to recognize the importance of a well-designed, high-performing field.

A key element in this mix is the entry of the sports turf manager early in the design process. His or her input will help the designer reach construction decisions that will make long-term maintenance of the field more efficient, easier, and less expensive.

Professionalism!! We must create a network of STMA professionals in every category to provide assistance in these matters. To help address such issues, STMA does have a Technical Committee. Mike DePew, current Chair of the STMA Technical Committee, is committed to the development of a systematic approach to professional design and maintenance standard guidelines. Mike recently has joined the American Society of Testing and Materials (ASTM) committee on STMA's behalf to work alongside some of the best agronomists in their fields such as Don Waddington and Norm Hummel, to mention a few. Let's support the efforts of this Committee and protect our profession.

*Steve*

# Sports Turf - The Human Elements\*

Sports turf managers are accustomed to adapting their programs to the whims of mother nature. Sometimes equally difficult is adapting a program to the human elements.

That adaptation may be a factor of who the facilities' financial decision makers are and what they do -- or don't -- know about the agronomics of sports turf. It may be a factor of the perception of a sports field's importance in the larger realm of responsibilities of the sports turf manager's superiors within the education, business or government sectors. Whatever the issues that take the attention of these decision makers away from the playing surfaces, the sports turf manager must help alert them to the importance of four key people-related issues. Safety, liability, economics and field use must all be addressed in order for sports fields to become better within a single program and across the globe.

## Safety is Number One

Neither the participants of athletic events nor the general public, including the parents of young athletes, are

sufficiently aware of the importance of the playing surface in helping to prevent injuries. For too long, there has been an over-all philosophy that recognizes game roughness as one of the expected, even anticipated, attractions of sports competition. Consider the "mud and guts" years of football play at all levels.

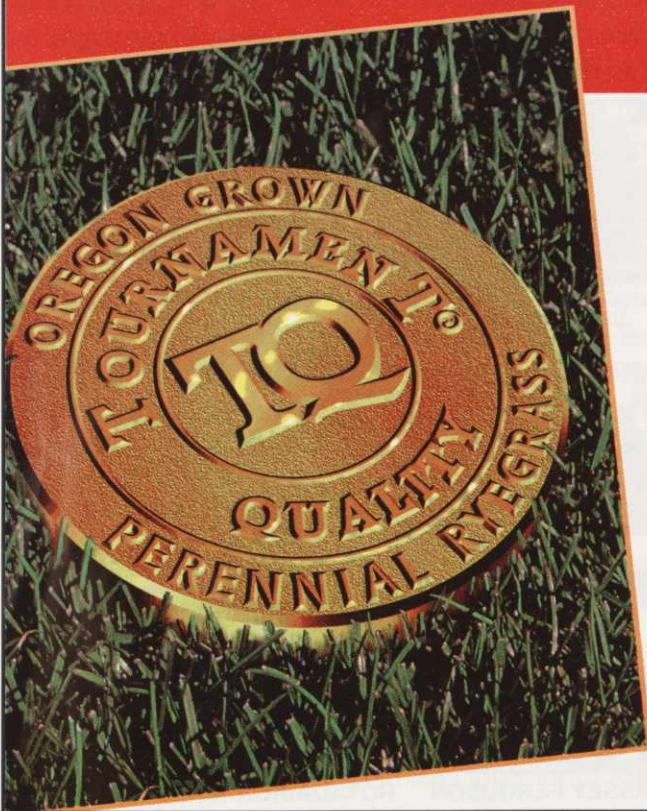
Research at major universities, as well as documented accounts of player injuries, both on natural and synthetic playing surfaces, have provided most convincing evidence in favor of well-maintained, natural turf surfaces.

It's up to sports turf managers and STMA to make the point: not only do poor field conditions present a hazard to the health of the athlete, they also may influence the outcome of the game in favor of luck rather than individual or team talent. Each athlete, young or old, amateur or pro, deserves the right to play on safe field conditions.

## Field Liability Enforces Number One

So important has the field safety issue become that the liability and insurance issues are demanding increased *continued on page 16*

## The new quality benchmark for improved varieties of turf type perennial ryegrass



### Tournament® Quality

As a professional in the turfgrass business, you need to be aware of the new professional measurement of quality for turf type perennial ryegrass seed. The new standard is Tournament® Quality.

Blue Tag Certified seed, once thought to be the best quality assurance, can contain *Poa annua* and coarse grass crop seed. Tournament® Quality perennial ryegrass does not allow these contaminants in the standard seed test.

For buyers and sellers alike, the race is on for high quality Oregon produced turf type perennial ryegrass. Don't be caught with potentially contaminated seed – insist on seed that meets Tournament® Quality standards labeled with the TQ mark.

## PRBA

Perennial Ryegrass Bargaining Association  
Post Office Box 3228 • Salem, Oregon 97302



# MIKE VEECK KEYNOTE SPEAKER AT STMA 11TH ANNUAL CONFERENCE

**B**orn to baseball and bred to enliven, Mike Veeck draws from a wealth of experience to entertain, educate and motivate. He'll be doing ALL that at the 11th Annual STMA Conference & Exhibition in his presentation, "It's More Than Just a Game," on Thursday, January 13, 2000, in St. Louis, Missouri. You won't want to miss this!

Mike's accomplishments are numerous in both the baseball and business worlds. His baseball career began in 1975 when he took the position of Assistant Business Manager and Director of Marketing for the Chicago White Sox. Mike and his father, Hall of Famer Bill Veeck, implemented fan-first promotions that gave the franchise a well-deserved boost. He took a break from baseball in the 80's to run his own advertising firm, Noble Veeck Advertising.

Mike re-entered professional baseball in 1990 with the then-Miami Miracle as Vice-President of Marketing. His creative ideas with the club earned him the 1992 Larry McPhail Award as Minor League Promoter of the Year. In 1993, he became President and Co-Owner of the St. Paul Saints. He currently

has ownership interest in five other minor league clubs: The Charleston Riverdogs, Hudson Valley Renegades, Ft. Myers Miracle, Butte Copper Kings and the Sioux Falls Canaries. He also serves as a marketing consultant to the Tampa Bay Devil Rays.

In addition to his baseball interests, he travels the country as a sought-after speaker. Stories, anecdotes and his fascinating and insightful presentations come from his years of experience in baseball on both major and minor league levels, as well as from his partners, which include singer/songwriter Jimmy Buffet, comedian Bill Murray, and entrepreneur Van Schley.

Make sure to attend Thursday's session and see why Mike says "It's More Than Just a Game!"



**Mike Veeck**



Raffle, Live & Silent Auction  
Donations Sought  
Don't Be Left Out

Make your Donations NOW for the  
STMA Raffle, Live & Silent Auctions  
to be held at the

11th Annual Conference & Exhibition  
January 12-16, 2000  
St. Louis, Missouri

For more information contact:

Tom Curran 954/786-4013

Mike Trigg 847/360-4725

Lori Gislason 612/625-6097

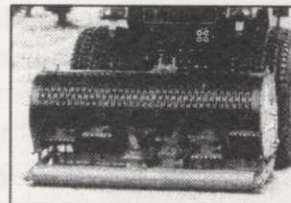
Hoke Holyoak 602/644-3656

Art Downing 410/313-4700

or STMA Headquarters 800/323-3875

## COMMERCIAL TURF & TRACTOR

NORTH AMERICA'S #1 VERTI-DRAIN DISTRIBUTOR  
Built on Experience, Service, and Customer Satisfaction!



VERTI-DRAIN



VERTI-SEED



MASSEY FERGUSON

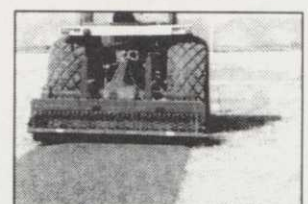
### QUALITY CONTRACTING!

- Complete athletic field renovation.
- Turf grids installation.

**1-800-748-7497**

**Bryan Wood, Owner**

—HOME OF—  
**Bryan's Blend  
Barbeque Sauce!**



ROTADAIRON SOIL RENOVATOR

# How Do You Do...?

**The Question -- How Did You Handle Sports Turf Care Under Severe Drought Conditions/Watering Restrictions ?**

*Answered by George Van Haasteren, CGM; Dwight-Englewood School (NJ)*

Water restrictions were implemented the first week of August. Below average precipitation had occurred during the months of May and June. July proved to be the hottest and driest ever recorded in the state of New Jersey. The previous year was also a dry year.

Throughout the year, scheduled maintenance procedures were performed to keep the fields safe and playable. Once the restrictions were imposed, I worked within the parameters of those restrictions. At the time they were imposed, we were in the process of aerating, topdressing and overseeding the fields. We had the opportunity to irrigate between the hours of 12:00 A.M. - 6:00 A.M. The restrictions also allowed for watering for a certain amount of days if fields had been fertilized or if pesticides and/or herbicides were applied. All work was documented and logged.

I called upon other sports turf managers and athletic directors throughout the state to get their feedback and to urge them to contact the Water Emergency Task Force. The emphasis was on safety and liability issues. Some towns had already closed their fields.

I also personally wrote to the Task Force emphasizing the importance of maintaining irrigation practices on athletic fields in relationship to injuries on fields that could not be irrigated. Along with my letter, I sent a copy of Maryland's exemption of athletic fields from water restrictions. At the end of August, restrictions were lifted for athletic fields and we were able to water during set hours.

I believe that networking and working with fellow sports turf managers, and informing state officials of the effects of proper irrigation in relationship to field safety, had a strong impact on their decision to lift the restrictions on athletic fields. It is also important to implement a scheduled maintenance program to keep your fields in the best shape possible. This includes such things as proper fertilization, topdressing and using high quality seed. Proper irrigation practices along with daily monitoring of the fields are paramount in athletic field maintenance.

*Answered by Paul Zwaska, Baltimore (MD) Orioles*

Actually, being a major league field, we were granted a special exception from the Governor to water

the field itself as needed. This exception was eventually broadened to include high school and college fields due to the safety factor and the fall season due to start soon.

As far as the landscaping outside and around the actual field, we trucked in recycled water from the sewage treatment plant. We put up signs to notify the public of that fact - both as a public relations and a safety tool.

*Answered by Tim Moore, Maryland National Capital Parks & Planning Commission*

During the drought, I did whatever I could to keep traffic off the fields. All heavy machinery was kept off the fields, including riding mowers, and play was heavily discouraged.

For the irrigated fields, we were mandated to cut back our water usage by 50%. I kept the mowing height up (and in some instances increased frequency) and made sure we were cutting with razor sharp blades. By keeping the grass cut and doing it frequently, I was attempting to decrease my loss of

*continued on page 10*

**PRO'S Choice<sup>®</sup>**  
**INFIELD PRODUCTS**  
**Improve Playing Conditions**

**SOILMASTER**  
Infield Conditioner

- Improves Infield Soil
- Reduces Compaction
- Absorbs Excess Water

**PRO MOUND**  
Mound/Batters Box  
Packing Clay

- Eliminates Deep Wear Holes
- Provides Firm Footing
- Reduces Maintenance

**RAPID DRY**  
Infield Conditioner

- Stabilizes Muddy Areas
- Eliminates Puddles
- Long Lasting

**CALL FOR LITERATURE & SAMPLES**

**PRO'S CHOICE PRODUCTS**  
**...Keeping Infields Playable...**  
**1-800-648-1166**

# Welcome New STMA Members

**Jody Andrews**  
City of Clewiston  
Clewiston, FL

**James Brandenburg**  
Livermore Area Parks & Rec.  
Livermore, CA

**Ryce Davis, Sr.**  
Crew Soccer Stadium  
Columbus, OH

**Lee Enloe**  
Sports Turf Company, Inc.  
Whitesburg, GA

**Frank X. Garza**  
City of Edinburg  
Edinburg, TX

**Milton Heithcock**  
Williamson Cty. Parks & Rec.  
Franklin, TN

**Rudy Juarez**  
City of Buena Park  
Buena Park, CA

**Brian Martinie**  
Complete Outdoors  
Manhattan, KS

**Dale McWhorter**  
Sports Turf Company, Inc.  
Whitesburg, GA

**Brad Monroe**  
Cuyamaca College  
El Cajon, CA

**James Patterson-Izatt**  
Consultant/Architect  
N. Vancouver, BC

**Doug Proctor**  
Town of Wendell  
Wendell, NC

**Thomas Robinson**  
Harford Comm. College  
Bel Air, MD

**Mark Sheheane**  
Sports Turf Company, Inc.  
Whitesburg, GA

**Dallas Subock**  
Harford Comm. College  
Bel Air, MD

**Robert F. Ward**  
Fairfax Cnty. Park Authority  
Ashburn, VA

**Daniel Wright**  
Sports Turf Company, Inc.  
Whitesburg, GA

**Terry Ashburn**  
New Orleans Saints  
Matairie, LA

**Colin Burns**  
Kirkwood Soccer Club  
Newark, DE

**Dale Downing**  
Unified School Dist. #385  
Andover, KS

**Burt Fordham**  
Sports Turf Company, Inc.  
Whitesburg, GA

**Jim Gavigan**  
Lesco, Inc.  
Edison, NJ

**Jason Hester**  
Sports Turf Company, Inc.  
Whitesburg, GA

**Richard Kerr**  
Big League Dreams  
Cathedral City, CA

**Stephen M. Mattison**  
Healthy Lawn  
Columbia, MO

**John Milardo**  
City of Middletown  
Middletown, CT

**Mike Monroe**  
City of Pasadena  
Upland, CA

**Patten Seed Company**  
Tim Bowyer  
Sharpsburg, GA

**John Quintero**  
City of Yuma  
Yuma, AZ

**Daniel L. Rockne**  
Foothills Parks & Rec.  
Littleton, CO

**Spectrum Prof. Products**  
Bill Harper  
Sarasota, FL

**Synthetic Surface, Inc.**  
Norris Legue  
Scotch Plains, NJ

**Tim Werner**  
City of Walla Walla  
Walla Walla, WA

**Kevin Yeiser**  
Lebanon Valley College  
Anville, PA

**Ted Baker**  
Park Dist. of Highland Park  
Highland Park, IL

**Daryl Cazinha**  
MWR Barbers Pointe G.C.  
Kaneohe, HI

**Bob Easley**  
Bridgeton Parks & Rec.  
Bridgeton, MO

**Amy J. Fouty**  
Univ. of Michigan  
Ann Arbor, MI

**Rex Giberson**  
City of Pasadena  
Pasadena, TX

**Victor Hillstead**  
City of Rancho Palos Verdes  
Rancho Palos Verdes, CA

**Tim M. Lam**  
James Madison Univ.  
Harrisonburg, VA

**Ray Maurer**  
City of Cedarburg  
Cedarburg, WI

**Emil Miller**  
Smithco, Inc.  
St. Petersburg, FL

**Catherine Morretta**  
City of Manassas Park  
Manassas Park, VA

**Larry Perrault**  
County of Riverside  
Banning, CA

**Bill Reeder**  
Millikin University  
Decatur, IL

**Luis Rodriguez**  
City of Edinburg  
Edinburg, TX

**Sport Turf Supply, Inc.**  
Philip R. Green  
Dothan, AL

**Richard J. Tedesco**  
Hollywood Park  
Inglewood, CA

**Joe Williamson**  
Sports Turf Company, Inc.  
Whitesburg, GA

**Shirley Bennett**  
City of Downey  
Downey, CA

**Championship Turf Svcs.**  
Michael Flowers  
Harwinton, CT

**Dennis Easley**  
Carleton College  
Northfield, MN

**Jim Fox**  
City of Thornton  
Thornton, CO

**John Glasgow**  
Univ. of North Florida  
Jacksonville, FL

**Rickey Honey**  
City of Fayetteville  
Fayetteville, TN

**Lange-Stegmann Co.**  
Paul Hoffman  
St. Louis, MO

**Jack McDonough**  
Town of Brookline  
Brookline, MA

**Joe Mills**  
Kirkwood Soccer Club  
New Castle, DE

**Pete Murray**  
Towanda Area School Dist.  
Towanda, PA

**Nelan Poteet**  
Catoosa County Rec. Dept.  
Ringgold, GA

**Marta Reinhold**  
N. Thurston School Dist.  
Lacey, WA

**Scott Ruff**  
W. Eagle Cnty. Rec. Dist.  
Eagle, CO

**Stewart/Cross, Inc.**  
Walter Clayton Stewart  
Tupelo, MS

**Scott Urbantke**  
University of Alabama  
Tuscaloosa, AL

**Steven V. Wolf**  
City of Port Orange  
Port Orange, FL

**Cherry Bergmeier**  
Kansas State University  
Manhattan, KS

**Troy M. Crawford**  
Texas Rangers  
Arlington, TX

**Dan Elliott**  
City of Evans  
Evans, CO

**Steve Frank**  
Lesco, Inc.  
Lansing, MI

**Rick Harden**  
City of Turlock  
Turlock, CA

**Eric L. Johnson**  
City of La Mesa  
La Mesa, CA

**Chris Lubner**  
St. Anthony High School  
Long Beach, CA

**Michael McHatten**  
Clovis Unified School Dist.  
Fresno, CA

**Vincent Minarchio**  
Cuyahoga Comm. College  
Parma, OH

**Jack O'Donnell**  
Town of Andover  
Andover, MA

**Jack Presley**  
City of Goodlettsville  
Goodlettsville, TN

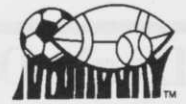
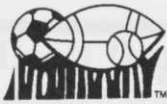
**William Casey Reynolds**  
Student/N. Carolina State Univ.  
Midland, NC

**Richard Sandlin**  
City of Panama City Beach  
Panama City Beach, FL

**Tony Strickland**  
Sports Turf Company, Inc.  
Whitesburg, GA

**Brian N. Vandermoere**  
City of Snellville  
Snellville, GA

**Cyndi Wright**  
Monte Vista School Dist. C-8  
Monte Vista, CO



## Chapter Events

Mark your calendars now for STMA's 11th Annual Conference & Exhibition, "Gateway to the 21st Century," to be held January 12 - 16, 2000, at the Regal Riverfront Hotel in St. Louis, Missouri.

### Indiana Chapter: STMA

The Indiana Chapter is planning an October event. More details will be announced soon.

For information on the Indiana Chapter or pending activities, contact: Terry Updike, B & B Fertilizer, at (219) 356-8424 or Pat Hickner at (800) 672-4273.

### Florida Chapter #1: STMA

The Florida Chapter will hold a meeting in Ft. Lauderdale on November 19th with the focus: "Sports Turf Equipment Demonstrations for Maintaining Athletic Fields." The meeting will include education by Dr. Phil Busey on athletic field weed control.

For information on the Florida Chapter or pending activities, contact: John Mascaro at (954) 341-3115.

### Midwest Chapter: STMA

The Midwest Chapter is one of the allied co-sponsoring organizations participating in the Illinois Turfgrass Foundation's 16th annual North Central Turfgrass Exposition. The event will be held from November 30 through December 2 at Pheasant Run Resort in St. Charles, Illinois. On December 1, Dr. Paul Rieke of Michigan State University will present a session on "Construction and Installation of Sports Facilities." Special focus seminars, including those on sports turf topics, will be featured on December 2. For more information on this event, contact ITF by e-mail at [associationheadquarters@csi.com](mailto:associationheadquarters@csi.com).

For information on the Midwest Chapter or pending activities, call: The Chapter Hotline (847) 622-3517.

### The Great Lakes Sports Turf Managers Association (GLSTMA)

GLSTMA will hold their Second Annual Awards Presentation and Meeting on December 7, 1999, at the Hyatt Regency, Columbus.

For information on the GLSTMA Chapter or upcoming events, contact: Joe Zelinko at (800) 897-9714 or Boyd Montgomery at (419) 885-1982 or the chapter website <http://members.tripod.com/~glstma>.

### The Colorado Sports Turf Managers Association

The Colorado Chapter will again participate in the Rocky Mountain Regional Turfgrass Association Annual Conference to be held December 8, 9 and 10, 1999 at Currihan Hall in Denver.

For information on the Colorado Chapter or upcoming activities, log on to the Chapter's new Web site: [www.cstma.org](http://www.cstma.org) or call the CSTMA Chapter Hotline: (303) 346-8954.

### Minnesota Chapter:STMA

The Minnesota Chapter will again participate in the Minnesota Turf & Grounds Conference and Trade Show. Dates are December 8 - 10, 1999. The theme is Beyond the Millennium - Education for the 21st Century. Several Conference sessions will focus on sports turf management.

For information on the Minnesota Chapter or upcoming events, contact: Connie Rudolph at (651) 646-1679.

### The North Texas Sports Turf Managers Association

The North Texas STMA Chapter will hold its annual meeting on December 14th in conjunction with the Texas Turfgrass Association meeting in San Antonio. The day's events begin with a breakfast meeting.

For information on the North Texas Chapter or pending activities, contact: Rene Asprion, Diamond Pro, at (800) 228-2987 or Tom Welch, CSM, Central Garden and Pet, at (800) 788-9581, or check the website: [www.ntstma.org](http://www.ntstma.org).

### Wisconsin Sports Turf Managers Association

The WSTMA will join with the Wisconsin Turf Association in presenting the annual Winter Expo to be held January 11 and 12, 2000, at the Marriott West in Madison, Wisconsin.

For more information on the Wisconsin Chapter or pending events, contact: Rich Riggs, R. H. Rettler & Associates, Inc. at (715) 341-2633.

*continued on page 11*

## OFFICIAL STMA CHAPTER SPONSORS

### Gold Sponsors

 **NOVARTIS**



### Silver Sponsors

**Alpine Services, Inc.**  
PREMIUM SPORTS FIELDS

**Hunter**  
The Irrigation Innovators

# Doc's Dugout - An Inning from our Past & Present

by Dr. Kent Kurtz, STMA Historian

## Similarities an Ocean Apart - Part I

First I would like you to know that my visits to College Park, MD, and Milwaukee, WI, to meet the families of Dr. Fred Grau and Harry Gill were beyond words. Fred's daughter, Ellen Mentzer and Fred Jr. shared slides, pictures, articles and publications that are still in the home where Fred Sr. lived. I didn't get the chance to look at it all, but I did get some wonderful things that I will be sharing with you from time to time in this newsletter and at the annual conference. Harry Gill III, also known as "Bud," was equally congenial and I was able to borrow pictures and things to copy for use by STMA. I realized during these visits that we all have our own pieces of STMA history tucked away somewhere. Can we all make a commitment now to help preserve that history?

My next scheduled trip is with Alain Langlois, owner of Lanco, the drainage folks from Montreal, Canada to visit several of STMA's friends in the UK. We will visit John Souter (Scotland), Brian Robinson, John Warner, David Shelton, Derek Walder (England) and many others from the Institute of Groundsmanship (IOG) to observe the latest ideas, technology and equipment that are being used and sold for drainage, construction, and maintenance of sports fields. We will also spend a few days at Saltex, the IOG's trade show where 8,000 grounds personnel will assemble at the Windsor Race Course near London. In this issue, I would like to touch on the history of the IOG so you can see how it parallels with our organization.

Before he died in 1989, IOG founder and president, W. H. "Bill" Bowles, wrote about how the work of the IOG was pioneered through the National Association of Groundsmen. I would like to share with you some of what he wrote. He begins by telling of his early education in the art of groundsmanship. When he was a schoolboy, he lived on a sports ground where his father was groundsman. He stayed active in the field after he left school and, after the death of his father during World War I, found himself in charge of a sports ground.

From that time onward he produced playing pitches as best as he could, assisted by what he remembered of his father's work and from a short experience elsewhere. Although he was friendly with a few neighboring groundsmen, they were very closed about their methods and tended to keep any know-how under their hats. This attitude was pretty general around the 1920's - there seemed to be a fear that a man was risking his job if he gave any information to another.

At this time, Bowles began to consider the possibility on forming an association to help overcome the general detachment of groundsmen and promote networking.

Amongst the older groundsmen who were well established and had the foresight to see how the profession could benefit from such an association were George Lane (Dulwich College) and G. Mullinden (National Provincial Bank). They welcomed the idea and wished such an organization had been formed earlier. Others were less enthusiastic and some were apprehensive about the prospect.

However, in 1933 things began to move. Someone suggested contacting Herbert Robinson who had a wide association with groundsmen. Mr. Robinson gave Bill the names and addresses of head groundsmen employed in well-known areas. One of these names was Harry White of Lords (cricket ground).

Bowles and his wife sent letters to 30 groundsmen in different parts of London, inviting them to the 'London Stone' (a pub) on January 10, 1934, to hear his proposal. Although only 11 of the 30 invited showed up, it was an auspicious occasion. Each of those 11 welcomed the prospect of an association and handed in subscriptions (dues) there and then. Elections were held and Bill became secretary. All those in attendance were very enthusiastic and vowed to try and recruit every groundsman they knew.

The first annual dinner was held at the White Horse Restaurant in Holborn. The press accepted their invitation and the group had their first newspaper report. In 1936, Bowles handed over the reins of secretary to Charles Littlefield and became chairman of the association.

The war (WW II) caused temporary abandonment of the group, but after it was over, they lost no time in resuming their activities. Littlefield made contacts with Sheffield (city) and they became the first provincial branch (chapter).

The untiring efforts of Charles Littlefield in all directions kept the groundsmen's association steadily growing. To him must go much of the credit for the first Hurlingham exhibition (Saltex today) held at the Hurlingham

*continued on page 9*



### EMPLOYMENT OPPORTUNITY

DVH ATHLETIC TURF SPECIALIZES IN FIELD RENOVATIONS OF ATHLETIC FIELDS OF ALL TYPES

Is in search of an experienced individual to be their lead man in the field

Year round work, benefits, and 401K plan

For more information please call Larry George at 1-800-942-0314

or

Fax resume to (609) 427-9684

*Relocation to Philadelphia/Southern New Jersey will be required*



## Doc's Dugout

continued from page 8

Club (a club along the river Thames featuring bowling greens, croquet greens, lawn tennis courts, and spacious grounds for a large trade show).

Looking back, it was not all clear sailing in those pioneer days. There were the usual disagreements and everyone was new to the fundamentals of organization, but they were out to achieve something for the good of all groundsmen, and with that in common continued to go forward.

William Bowles lived to see his organization grow into

the largest sports turf association in the world with the largest trade show (Saltex at Windsor) and attendance exceeding 8,000 members and guests from around the world. I met Bill twice during the 1980's at the Windsor show when I was Executive Director for STMA. I read recently that Bill's grand-nephew, Martin Smith, joined the grounds staff at Merrist Wood College where he is studying sports turf management.

*Next Issue - Where the IOG is today and what activities they are doing for their members.*



**F I V E**  
GREAT REASONS WHY  
YOU SHOULD CONSIDER  
**BULL'S EYE** Bermuda  
FOR YOUR NEXT  
PROJECT.

- Virtually No Seedheads
- Good Shade Tolerance
- Deep Blue-Green Color
- Medium-Wide Blade For Texture Contrast
- Can Be Mowed With Rotary or Reel



**BULL'S EYE**  
Bermuda

**WEST COAST**  
**TURF**  
GROWERS AND INSTALLERS OF  
PREMIUM QUALITY SOD AND STOLONS

www.westcoastturf.com 760/360-5464 800/447-1840 FAX: 760/360-5616

## DR. TOM JADIN TO SPEAK AT CONFERENCE

**W**ant to know how to Reach New Heights without Climbing the Walls? Attend the 11th Annual STMA Conference & Exhibition, January 12-16, 2000, in St. Louis, Missouri, and find out! Dr. Tom Jadin, Program Development Coordinator for the Winnebago Mental Health Institute, Winnebago, Wisconsin, will be on the program on Saturday, January 15th to offer his light-hearted, yet practical look at how to keep motivated, caring, productive, well and SANE!

Dr. Jadin has been with the Winnebago Institute for the past 25 years. He also operates a private counseling service for individuals and families and is a part-time instructor for the University of Wisconsin. An internationally recognized speaker, trainer and consultant in a wide array of topics to private corporations and public agencies, he also has published and presented over 30 papers and has 10 films to his credit.

To keep "Climbing the Walls" from becoming part of your job description, come hear what Dr. Jadin has to say at the 11th Annual STMA Conference & Exhibition.



## How Do You Do...?

continued from page 5

water through transpiration through the leaves. A skinny short man sweats less than a tall fat man! (I also did a lot of rain dances!)

Answered by Dave Navarro, University of Maryland

Dealing with drought conditions and water restrictions is never an easy task. As a turfgrass manager for Campus Recreation Services (CRS) University of Maryland, College Park, it is important to anticipate the worst and be prepared for it. At the start of the spring semester we prepare our fields for daily use that begins in late spring and continues through the summer months. CRS tries to maintain desirable and safe-playing surfaces at all times through proper cultural practices such as weed control, aerification, fertilization, overseeding and mowing. These cultural practices in the spring enable the tall fescue mix athletic fields to survive a possibility of drought with a healthy well-rooted turf stand. By the middle of summer, activities on CRS athletic fields slow down. After the slow down, we limit foot traffic and unscheduled use on the

fields to avoid further wear spots and damage to the turf stand.

When water restrictions were implemented in the Maryland area, although voluntary at first, CRS did their part to try and help conserve water. We first cut back our watering to 50% of the normal time period. When watering did occur, it was a deep syringing with minimal runoff. This enabled the turf stand to maintain a good root system for what was soon to come. When mandatory water restrictions were implemented, Campus Recreation Services complied and shut down all watering to all fields. Soon after this was done, the drought tolerant tall fescue was starting to brown out and dormancy was setting in. We then cut back on all maintenance and cultural practices to minimize any further damage that might occur to the turf during this time of stress.

Now that the rains have come back and water restrictions have been lifted our fields our greening up. With proper cultural practices and preventative maintenance we can now look forward to a green fall.



## RainBuster

Polytarps



- Black/White reversibles for the ULTIMATE A-L-L SEASON turf protection!
- Lightweight AND Economical!
- Sizes from Golf Greens to Soccer Fields.

Complements our complete line of vinyl covers, patented zipper systems, geotextiles, grids and more! Call for your FREE BUYER'S GUIDE now.

1-800-621-0146 TOLL FREE

M. PUTTERMAN & COMPANY, INC.

4834 South Oakley • Chicago, Illinois 60609  
773-927-4120 (In Illinois)



1926 Acton Hwy • Granbury, TX 76049  
1-888-NEW GRASS  
639-4727

# GRASS

Ours **IS** Greener  
On Your Side Of  
The Fence!

SAND BASED  
SOD

BAyr Root  
Turf

42" Big Roll  
SOD

Products & Services You've Trusted  
For More Than **25** Years!!

## Chapter Events

continued from page 7

### Keystone Athletic Field Managers Organization (KAFMO Chapter STMA)

The Eastern PA Turf Conference and Trade Show will be held from January 11 to 13, 2000, at the Valley Forge Convention Center in King of Prussia, PA. The Western PA Turf Conference and Trade Show will be held from February 9 to 11, 2000, at the ExpoMart/Radisson Hotel in Monroeville, PA.

For information on the KAFMO Chapter STMA or upcoming events, contact: Dan Douglas, Reading Phillies Baseball Club, at (610) 375-8469, extension 212.

### The Iowa Sports Turf Managers Association

The Chapter will participate in the Iowa Turfgrass Conference and Trade Show to be held from January 24 to 26, 2000, at the Convention Center in Des Moines, IA. A special sports turf track will again be offered. More details will be announced soon.

For information on the Iowa Chapter or upcoming activities, contact: Lori Westrum at The Turf Office at (515) 232-8222 (phone) or (515) 232-8228 (fax).

### The Mid-Atlantic Field Managers Organization (MAFMO Chapter STMA)

For information on the MAFMO Chapter or pending activities, contact the Hotline: (410) 290-5652.

### The Michigan Sports Turf Managers Association

For information on the Chapter or pending events, contact: Rick Jurries, West Ottawa Public Schools, at (616) 395-2364.

### The Mid-South Chapter STMA

For information on the Mid-South Chapter or upcoming events, contact: Jim Calhoun at (901) 755-1305 or Robert Bodi at (901) 383-2414.

### The Northern California Chapter of the Sports Turf Managers Association

For information on the Nor-Cal STMA Chapter or pending activities, contact: Janet Gift at 530/758-4200.

### Southern California Chapter:STMA

For information on the Southern California Chapter or pending activities, contact: The Chapter Hotline: (1-888) 578-STMA (toll free in Southern California).

### Tennessee Valley Sports Turf Managers Association

For information on the TVSTMA Chapter or upcoming events, contact: Tom McAfee, Nashville Sounds,

at 615/242-4371 or Bob Hogan at 888/224-6426.

### Chapters On The Grow

**Arizona** - The City of Yuma and STMA of Arizona will hold their 7th Annual Sports Turf & Equipment Show, Friday, December 3, from 8:00 A.M. - 3:00 P.M. at the Ray Kroc Baseball Complex. The 4th Annual Sports Turf Golf Tournament will be held on Thursday, December 2, at the Desert Hills Golf Course. For more information on these events contact: Larry Munoz, City of Yuma, at (520) 329-2824.

For information on other upcoming events, contact: Bill Murphy, City of Scottsdale Parks & Recreation Department, at (602) 312-7954, or Kris Kircher, City of Chandler Parks & Recreation Department at (602) 786-2728.

**Kansas City, Missouri/Kansas area** - For information on the forming Chapter, contact: Trevor Vance at 816/504-4271 or Jay Sutton at 816/795-8873.

**Long-time STMA member, Louis Jennings, Parks & Recreation Director for the City of Ripley, Tennessee for 13 years, died of a heart attack on July 15th. Remember his family in your thoughts and prayers.**

A Falcon rotor's performance begins when the curtain comes down.

The Rain Bird Falcon® rotor's "Rain Curtain™" nozzle delivers even coverage and green turf.

Dry spots appear when water is unevenly distributed throughout a rotor's spray pattern. You could try watering longer, or you could try Rain Bird's Falcon rotor. The Falcon rotor covers turf evenly so dry spots disappear and turf looks greener—with less water and in less time.

Rain Bird offers a full line of Falcon rotors for every application, including sports fields, cemeteries, schools and parks. For details on the Falcon rotor and the complete line of Rain Bird products, call 1-800-458-3005.



The Rain Bird Falcon rotor offers better performance in real-world conditions.

**RAIN BIRD**

Rain Bird Sales, Inc. 4261 S. Country Club Road, Tucson, AZ 85714 USA

# Headquarters Report

by Steve Trusty, Executive Director

Since the last newsletter I have been able on several occasions to perform one of the most enjoyable duties as STMA Executive Director -- that is Chapter visits. It is always great to get out and see how Chapters are doing things. It is even better to be able to meet more and more STMA members and potential members on these visits. Since early July, I have been to Ohio (Great Lakes Chapter), Michigan, Minnesota, and Wisconsin. I also attended the Field Day hosted by the New England Sports Turf Managers Association. We are getting very close to having all the paperwork completed to recognize the New England group as an officially affiliated STMA Chapter. These important Chapter visits are made possible by the funding of our Chapter Sponsors John Deere and Novartis at Gold Level and Alpine Services and Hunter Industries at Silver Level.

Speaking of Chapters and Sponsors, another benefit made possible by the STMA Chapter Sponsors is the Chapter Officers Training Session. The next one is in the

final planning stages for January 11th in St. Louis. If you are a chapter officer or are involved with getting a chapter started, mark your calendar and make plans to meet with your peers in St. Louis. If you haven't received an information packet and want one, call Headquarters.

While in Nashua, NH, for the NESTMA meeting I had the opportunity to have a great visit with George Toma. He has been helping out the City of Nashua with the renovation and maintenance of their Minor League Baseball facility. It is always great to visit with George and receive his assurances that he is pleased with the way things are going with STMA. George continues to be a great supporter of STMA and, at the time this column was written, was trying to arrange his schedule to help the Certification Program by "testing" the test and giving us his feedback.

By the time you receive this, a group of long-time STMA members and University people will have gotten together in Chicago for what should be the final review of the Certification Test. If all goes as planned, materials will go into the mail to all members as soon as necessary approvals have been received from the Board and the National Certification Commission.

At last report, nearly 100% (1 member questioned 1 item) of the ballots on the Bylaws revisions approved the changes. Unless there is huge swing in the last couple of days for receiving ballots, the revised Bylaws will be accepted and in effect. Thanks to a hard working committee for all their efforts and to those of you who took time to review them and cast your ballot. The new Bylaws will become a part of the next Roster.

I hope you have received the new Roster and Compendium by now. The last of them went into the mail on September 3rd. We apologize for the delay. As you can see both publications are much larger than their predecessors were and that contributed to the delay. The graphics company we have worked with the past couple of years also let us down and did not complete their part in a timely or accurate way, resulting in additional delay. Needless to say, we have changed to another graphics company.

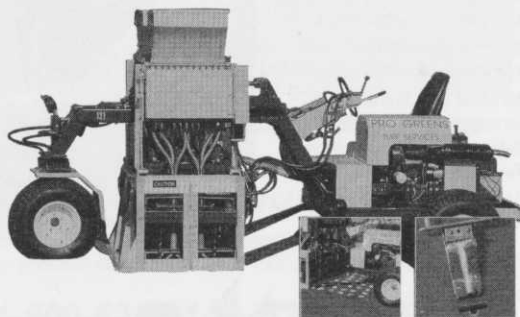
Full details on the Conference should be in your hands by now. We hope to see you there.

## ProGreens

The #1 Turf Service Specialist

### DRILL & FILL AERIFIER

- ✓ Penetrates Hard Pan
- ✓ Changes Soil Profile
- ✓ Increases Root Depth
- ✓ Relieves Compaction & Allows Better Percolation For Soccer & Turf Fields



Call To Schedule Our Service  
1-800-639-7731

# "Steves" Present Toma Golden Rake Award

**S**TMA President, Steve Guise & Executive Director, Steve Trusty, had the joint honor of making a very special presentation on September 25th, in Rocky River, Ohio. Not only was Don Kelly, City of Rocky River Recreation Dept., the 1998 George Toma Golden Rake Award winner - the City decided to honor him by renaming a field at his park - Don Kelly Field! The Mayor and the Director of Recreation were on hand for the naming of the field.

Don was unable to attend the 10th Annual Conference & Exhibition in Mesa, Arizona, due to a family illness and it was decided when Headquarters found out about the field naming that this could be the perfect opportunity to formally present the Award.

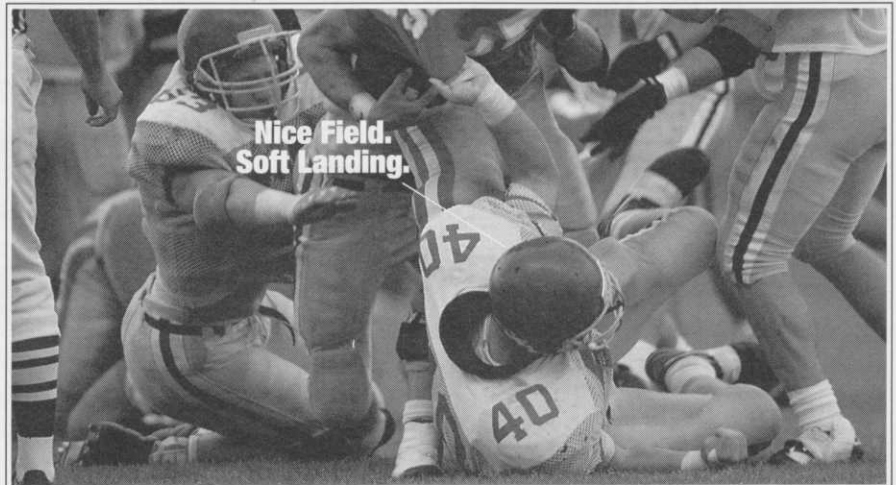
The George Toma Golden Rake Award acknowledges the superior performance of a sports turf crew member in "on the job" activities and in community service - the *and then some* factor.

An ex-Marine, Don played baseball in high school, football in college and baseball in the Marine Corps. He had been an assistant football coach at Baldwin-Wallace College for one year when a position for a baseball coach opened up at Rocky River High School. Don took the job and coached there for 30 years. He also taught health and physical education and was an assistant football coach for 15 years. He has taken care of the fields in the City of Rocky River for the past 13 years. Don maintains 8 baseball fields, 6 soccer fields and 6 flag football fields that receive year-round use. He is always giving 110 percent and is constantly striving to improve the multiple fields under his care. He demonstrates the *and then some* factor by "giving back"

to the community by conducting youth baseball and football camps and clinics during the summer. He does all this at the ripe "young" age of 67!

And so, to Don Kelly, for showing that it is possible to possess *and then some* spirit at

ANY age, from all of in the Sports Turf Managers Association, a hearty CONGRATULATIONS and may you continue your efforts for many years to come!



## Turfco Helps You Build A Turf That Gets Noticed.

Turfco offers you a strong team of turf building equipment. They're the fastest and most versatile equipment to let you build harder and healthier turf. Your sports fields become safer to play on and easier to maintain. Originators of Mete-R-Matic® top dressers in 1961, Turfco's professional equipment gives your field a look that gets noticed.

### Economy Aerator

Now you can afford to breathe life into any sports field. This low cost, 62" aerator has no hydraulics or mechanical linkages for easy use and low maintenance. Hooks up to any vehicle in seconds.



### Precision Top Dresser

Fast, uniform, versatile. Patented chevron belt lets you handle top dressing, lime, crumb rubber, gypsum, calcine clay, compost and even overseeding with precision. Level fields and amend soil consistently.



### Large Area Top Dresser

Large, 4 cubic yard capacity with patented chevron belt applies material with precision. Top dress from 1/32" to 6" to quickly handle large areas. Material conveyor and spinner attachment for added versatility.



For details and the name of your local dealer, call

**1-800-679-8201**

**Turfco Manufacturing Inc.**  
1655 101st Avenue Northeast  
Minneapolis, MN 55449-4420

*Choice Performers,  
Choice Fields.*

**TURFCO**®

## “Category” Sessions Expanded

Those of you who attended the 10th Annual Conference & Exhibition in Mesa, Arizona, may remember that we held a special “Category I” Session for sports turf managers of professional facilities.

Due to the popularity and success of that experimental session - and input from all of you - this year, we are expanding the sessions to include each category. These sessions will be held from 1:00 P.M. to 5:00 P.M. on Wednesday, January 12th, at the Regal Riverfront Hotel.

Each of the interactive Category Sessions will focus on the special situations and challenges of sports turf managers in those categories.

There will be no additional charge for these special sessions. The STMA Board member representing each Category will be the coordinator for that Category Session.

If you have suggestions for topics to be addressed during your category session, please call, fax or e-mail them to STMA Headquarters for for-

warding to your Board Member -- or contact your Board Member directly.

See the breakdown for the categories and the Board Member for the Categories listed below:

**Category I** - Professional Sports Turf Facilities Managers, *Board Member - Tom Burns, Texas Rangers Baseball*

**Category II** - Four-year Colleges and Universities Sports Turf Facilities Managers, *Board Member - Bob Campbell, University of Tennessee*

**Category III** - Other Schools Sports Turf Facilities Managers. *The new breakdown for Category III as established by the recent bylaws changes will have its Board Member designated in the election for year 2000 Board positions. The nominees for this Board position (yet to be named) will jointly coordinate this session.*

**Category IV** - Parks & Recreational Sports Turf Facilities Managers, *Board Member - Tim Moore, M-NCPPC*

**Category VIII** - Research, Teaching & Cooperative Extension Personnel, *Board Member - Dr. Tony Koski, Colorado State University (as the current Board Member representing this segment of membership at the newly assigned category number.)*

The **Category V/Exhibitors** meeting will be held at the conclusion of the Trade Show session on Friday in the Trade Show area.



**WESSCO, INC's KLAWOG® & Klacon™**  
**A New Foundation for Sports™**

 <b>KLAWOG™</b> MOUND and BATTER'S BOX MIX (RED)	 <b>Klacon™</b> <b>I</b> SOIL CONDITIONER (RED)
 <b>KLAWOG™</b> MOUND and BATTER'S BOX MIX (GRAY)	 <b>Klacon™</b> <b>II</b> SOIL CONDITIONER (GRAY)
 <b>KLAWOG™</b> BUNKER MIX	 <b>Klacon™</b> <b>GRAND SLAM</b> SOIL CONDITIONER (RED smaller grain)
 <b>Zapitdri™</b> DRYING AGENT	

**Discover The KLAWOG® Klacon™ Advantage Today!**  
 Call **330-745-9322** for your nearest distributor.  
 WESSCO, INC. P.O. Box 4025 Copley, OH 44321-0025  
[www.klawog-klacon.com](http://www.klawog-klacon.com)

### Members on the Move

**Bart Prather**, former Turf Specialist with the University of Arkansas, has taken the position of Sports Turf Manager at Mississippi State University. Bart can now be reached at 662/325-2773.

**John Watt**, former student member, is now Stadium Groundskeeper for the Cleveland Browns. You can reach John at 440/356-4273.

**Congratulations guys!**

If you, or someone you know, has changed positions, let us know so we can get the word out.

## COTS - SECOND EDITION!

The second edition of COTS (Chapter Officers Training Session) will be held on January 11, from 10:30 AM to 5:00 PM. That's the Tuesday before the start of the STMA Annual Conference (January 12 - 16, 2000). And, it's at the same facility, the Regal Riverfront Hotel in St. Louis, Missouri.

If you are an officer or committee chair of an STMA affiliated or forming chapter - or - if you are assisting in the development of a new chapter in your area - you are invited to attend.

There is no charge to participate in this COTS gathering thanks to the continuing support of your Chapter Sponsors. Gold Level Sponsors are John Deere and Novartis. Silver Level Sponsors are Hunter and Alpine Services, Inc. Their funding covers the

break, lunch, and all materials.

The COTS program was introduced in 1999 to give Chapter leaders the opportunity to meet, share ideas and address key issues. It combines presentations, round-table discussions and some "show and tell," with informal networking.

Abby McNeal, Chapter Relations Chair, has worked with Headquarters to develop a preliminary packet on the COTS program. If you are interested in attending, but have not yet received the preliminary packet, please contact STMA Headquarters.

Each participating Chapter will be asked to supply information prior to the session to be included in the COTS notebook. The Chapter representatives also will be asked to bring samples of materials they use to promote the Chapter, share information with Chapter members, or otherwise enhance the Chapter experience. These materials might include copies of your newsletter; your flyers notifying Chapter members of an upcoming event; an informational handout one of your meeting hosts developed; the sign you used to attract potential Chapter members to your display at a regional turfgrass show or field day; a copy of your scholarship or field of the year application; or...anything else that works for you.

The whole point of COTS is helping Chapters, and much of it is Chapters helping Chapters. That means sharing the great things your Chapter is accomplishing and the tips you've developed on how to make them work - and sharing those mistakes - large and small - that your Chapter has made that have been a learning experience.

Chapters are about raising the standards; growing as professionals and making an impact on the industry. It takes time, effort, dedication and lots of volunteers to get a Chapter going and keep it going. Every attendee of COTS is one of those dedicated people. You'll have a great time meeting each other and strengthening that network of people you can count on to listen, understand and share - not just at the COTS gathering, but throughout the year.



### CYGNET TURF

BEEN THERE.....

DONE IT.....



JACK KENT COOKE STADIUM • WASHINGTON REDSKINS  
FOXBORO STADIUM • NEW ENGLAND PATRIOTS  
ARROWHEAD STADIUM • KANSAS CITY CHIEFS  
ALTEL STADIUM • JACKSONVILLE JAGUARS  
ERICSSON STADIUM • CAROLINA PANTHERS  
SOLDIER FIELD • CHICAGO BEARS  
CLEVELAND STADIUM • CLEVELAND BROWNS  
JOE ROBBIE STADIUM • MIAMI DOLPHINS  
JACOBS FIELD • CLEVELAND INDIANS  
BUSCH STADIUM • ST. LOUIS CARDINALS  
KAUFFMAN STADIUM • KANSAS CITY ROYALS  
RAYMOND JAMES STADIUM • TAMPA BAY BUCCANEERS  
BALTIMORE RAVENS TRAINING FACILITY  
PHILADELPHIA EAGLES TRAINING FACILITY  
ST. LOUIS RAMS TRAINING FACILITY  
OHIO STATE  
UNIVERSITY OF TOLEDO  
UNIVERSITY OF MICHIGAN  
UNIVERSITY OF IOWA  
BOWLING GREEN STATE UNIVERSITY  
WESTERN MICHIGAN UNIVERSITY  
OHIO UNIVERSITY  
WESTERN ILLINOIS UNIVERSITY  
COLUMBUS CREW

*Whether it's to strip a field, or install a field using our turf or yours, CYGNET TURF is able to perform under all kinds of conditions and is able to respond to most emergencies. Our patented equipment is able to cut and install from very thin, to very thick turf. So, when you are ready to install...give CYGNET a call!*

#### CYGNET TURF

4711 Inasley Road  
North Baltimore, Ohio 45872  
Phone: (419) 354-1112 • Farm (419) 655-2020  
Fax: (419) 352-1244

# Sports Turf - The Human Elements\*

continued from page 3

attention. No longer can local school boards, municipal or other governmental agencies, college athletic directors, or professional sports teams and clubs continue to maintain a "head in the sand" attitude regarding responsibility for field related injuries. The time is long past for the improvement of unsafe field surfaces.

Many sports enthusiasts are concerned about the possibility of insurance rates increasing to the point where wide spread discontinuance of sporting events will be necessary. Costs of secondary and college education are increasing to the point where funding of scholastic and intercollegiate athletics is now close to the breaking point. Reduction of injuries as a result of better quality turfgrass fields can serve to reduce the liability issue and allow spectators to continue to enjoy competitive sports at all levels of play.

## Economics Will Always Be An Issue

Economics are a fact of life. Sports fields and the maintenance of those fields do cost money. Sports turf managers must move into the new millennium on budgeting issues, presenting clearly-defined, well-documented budgets for field improvement and maintenance. Of course, when conditions are poor, appropriation of sufficient funds to do a complete field renovation properly and do it all at once is usually the most efficient option in the long run.

But, regardless of the amount of funding available, there's always something that can be done to make the field better. Because we know the weakest link determines the strength of the chain, determining the extent of field problems and correcting them in order of severity and risk to player safety will make a significant impact over a period of time. Aggressively following this program will improve total field conditions without excessively large expenditures in any one budgeting period. It's again up to the sports turf manager to establish priorities for field improvement, determine how much can be accomplished each year, and fight for the funding to develop and maintain a safe playing surface.

## Use of the Field

Sports turf managers know a major factor in field condition is the amount and type of use the field receives. Many sports fields with poor quality playing surfaces are simply over-used; too many sporting events are scheduled and too many non-sports activities are staged on the playing surface. On some sports fields, overall use is within reason, but that use continues during field conditions unsuitable for play, severely damaging the playing surface and compacting the soil. Often, field use is so frequent, adequate time is not provided for recovery


of injury to turfgrasses, for remedial maintenance procedures, or for the renovation of unsafe playing surfaces.

Sports turf managers must educate field user groups and the facilities' financial decision makers on the short-term and long-term consequences of these actions. In some instances, excessive and inappropriate use can be controlled by better communication between the sports turf manager and the field user groups and more efficient methods of scheduling. The sports turf manager may need to be granted the authority to take a field out of play, and have that authority respected and enforced, if necessary. New practice fields could be a workable solution. In some cases, an increase in the number of sports fields is needed to adequately meet public demands.

People skills do matter. The best technically-accurate maintenance program can be torpedoed by deficiencies in areas of safety, liability, economics or field use.

\* From the Lawn Institute Special Topic Sheets (LISTS) Notebook published October 1991.





## Green in an Instant!

That's all the time it takes with Green Lawnger™ turf paint from Becker-Underwood. Green Lawnger restores the natural look and color to dormant and discolored turf for up to 14 weeks. Its lush green color is ideal for sports turf and golf courses, and anywhere else healthy-looking turf is required.

With **Green Lawnger** on your turf, you'll see the difference!

**BECKER UNDERWOOD INC.**  
THE COLOR OF INNOVATION

801 Dayton Avenue • Ames, Iowa 50010 U.S.A.  
515-232-5907 • Fax 515-232-5961  
<http://www.bucolor.com> • e-mail: [request@bucolor.com](mailto:request@bucolor.com)





1972



1974



1977

UNLIKE MOST THINGS INTRODUCED IN THE SEVENTIES, THE GROUNDSMASTER 300 NEVER WENT OUT OF STYLE.



1979



1982



1985



1989



1993



1996



1999

It could have gone the way of the leisure suit. Lawn darts. Starsky and Hutch. But 27 years after its introduction as the Groundsmaster 72, the Groundsmaster 300 is still setting industry trends. Today's Groundsmaster is the product of thousands of comments and suggestions, decades of testing, and one very simple goal: to help our customers be more productive. From time-tested durability to our exclusive Recycler® decks, there are plenty of reasons why the Groundsmaster 300 line is still the most popular in the industry. Visit [www.toro.com](http://www.toro.com), call 1-800-803-8676, or cruise your Pinto over to your local Toro distributor for a demo.



GROUNDMASTER®

*It's about productivity*

## Certification Program Almost Here

**S**TMA's Certification Program is in its final stages of development as this newsletter goes to print. The Committee has just a few more points remaining for the STMA Board's review and approval. Then it's off to our legal counsel for one last review of those points. The majority of the materials included in the program have already passed these hurdles. Once printing of all the materials is completed, the applicant packets will be sent to all STMA members and to others upon request.

By the time you read this, the second session of "testing the test" will have been completed.

Some key details of the program follow.

Included in the Certification packet you will be receiving is a credentialing information booklet, which outlines the basics of the Certification program and gives the procedures to follow in making the application. The application forms and education worksheets also will be included in the packet.

An important part of the packet is the "List of Competencies" in the areas of agronomics, pest management, administration and sports specific field man-

agement. The List of Competencies was developed by the Certification Committee in "need to know" areas that relate to the four defined segments of study and of testing. The statement, "In order to qualify for the designation Certified Sports Field Manager (CSFM), you should be able to:" is followed by the specific competencies in that area. Reviewing these competencies should make it easier for each individual to determine in which area or areas further study or training is needed - or not needed, whichever the case may be.

In order to qualify for the test, an individual is required to have achieved a minimum of 40 points earned through a combination of education and experience. It is NOT possible to achieve the 40-point minimum through education points alone. It is possible to achieve the 40-point minimum through experience points alone. The majority of those achieving the 40-point minimum will do so through a combination of education and experience points.

The education points awarded for degree programs are listed in the packet. Other Educational Programs may qualify for points. Information on such programs can be included with the application for review and possible point assignment, or preliminary questions can be directed to STMA Headquarters.

Sports turf management experience will be recorded on the application form. Experience points are earned at the rate of 1 point per year for a sports turf crew member; at 3 points per year for work in supervisory turf management positions; and at 6 points per year for the top position as sports turf manager.

Completed applications will be sent to STMA Headquarters. These applications will be reviewed and applicants notified of their status within 60 days of the receipt of the application forms by Headquarters.

Once all qualifications for application are met, and the appropriate fees received, the qualified applicant will be scheduled for the written multiple choice test covering the four major sections noted above. These will be proctored tests conducted at accepted assessment centers so that each qualified applicant can sit for the test as it fits their schedule. In addition, the test will be offered under similar supervised conditions in conjunction with each STMA Annual Conference beginning with the 11th annual Conference and Exhibition to be held January 12 - 16, 2000, in St. Louis, Missouri.



### YOUR ONE-STOP SOURCE FOR AMERICA'S LEADING BASEBALL SURFACES & SUPPLIES!



**USED BY OVER 100 PRO TEAMS!  
PLUS 8 OF THE LAST 10 WORLD SERIES CHAMPS,  
OVER 500 COLLEGES, AND THOUSANDS OF  
TOWNS & SCHOOLS WORLDWIDE!**

**800-247-BEAM**

FAX: 908-637-8421 908-637-4191 GSA #GS-07F-6143A

**DISTRIBUTION CENTERS NATIONWIDE!  
OVER 200 INFIELD PRODUCTS  
FREE INSTRUCTIONAL BROCHURES**

**Introducing REGIONAL INFIELD MIXES  
BLENDED FOR YOUR STATE & CLIMATE!**

## And Workshops too!!

Take a look at your Conference packet. Do you notice anything new? That's Right - we've added Workshops to this year's Conference educational program.

Thanks, in part, to the ever increasing popularity of the Round-Table Discussions, a previous Conference addition, your education committee has decided to try out another new workshop format on Friday, January 14th.

After careful consideration, the committee has come up with the following six (6) topics. You choose the one that most closely fits your sports turf management program and your needs.

These two-hour workshops are designed to give you - the attendee - a chance to listen, learn AND really dig in during an expanded educational session.

Your Workshop topics are:

- *Maximizing Performance of Sand-Based Field*  
Dr. Norm Hummel, Hummel & Company, Inc, Trumansburg, NY
  - *Soil Tests - What to do with all those numbers*  
Dr. Tony Koski, Colorado State University, Fort Collins, CO
  - *Soils - The Basics*  
Dr. Henry Indyk, GSI Consultants-Turfcon, Somerset, NJ
  - *Irrigation Design & Management*  
Ms. Lynda Wightman, Hunter Industries, San Marcos, CA
  - *Electronic Communications*  
Mr. Boyd Montgomery, Sylvania Recreation, Sylvania, OH & Ms. Mary Owen, UMass-Extension, Rochdale, MA
  - *The Basics of Weeds, Insects & Diseases:*  
*Weeds*  
Mr. Brad Fresenburg, University of Missouri, Columbia, MO  
*Insects*  
Mr. Don Fowler, Penn State University Extension Agent-Retired & KAFMO Board Member, McConnellsburg, PA  
*Diseases*  
Dr. Paul Vincelli, University of Kentucky, Lexington, KY.
- So, pick your topic and join in the session of your choice!

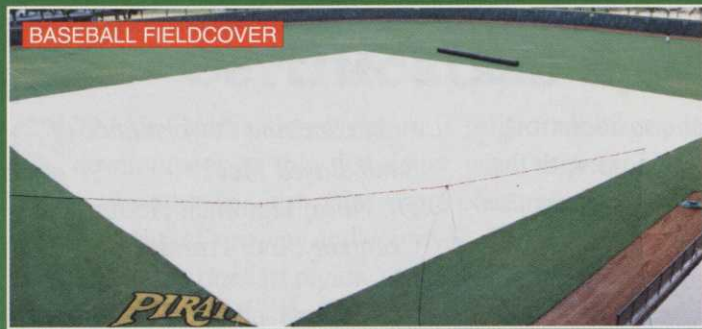


**TUCKAHOE  
TURF FARMS, INC.**  
*"Instant Lawns"*

- \* **HIGH QUALITY New Jersey Certified Bluegrass & Fescue Sod**
- \* **GROWN ON HAMMONTON sandy, loam-type soil**
- \* **OUR COMPLETELY IRRIGATED 700-acre farm, allows production and deliveries to parts of Pennsylvania, Delaware, New York, and all of New Jersey**
- \* **LABOR-SAVING BIG ROLLS, please call for custom installation prices**

401 Myrtle Ave. · PO Box 148 · Hammonton, NJ 08037  
**1-800-222-0591** Fax 609-561-0296  
1-609-561-7184





BASEBALL FIELDCOVER

Infield raincovers can now be installed in a minimum of time.



FOOTBALL FIELDCOVER

Even a full size fieldcover for football or soccer is easier to handle.

## Field Protection Made Easy...

with the FIELDCOVER SYSTEM by COVERMASTER®

You're always ahead of the game with the FIELDCOVER system by COVERMASTER®.

Thanks to this easy-to-use equipment, installation, removal and storage of a fieldcover can be quick and simple.

**30**  
YEARS  
1969-1999

First, there's TARPMATE™, a strong and lightweight plastic roller available in any

**COVERMASTER™**  
**COVERMASTER**  
**COVERMASTER**

MASTERS IN THE ART OF SPORTS SURFACE COVERS

length and supplied with safety end caps.

Then comes TARP MACHINE™. Attached to the P.T.O. on your tractor, this clever handling tool makes light of rolling the cover on and off the field.

Finally, with our wide choice of cover materials, COVERMASTER® will custom design a cover in the size, weight and configuration that meet your specific needs.

The COVERMASTER® FIELDCOVER SYSTEM. You could say we have you covered.

Call us today and see.



SEE  
THE ACTION  
ON VIDEO!



TARPMACHINE™

MEMBER  
Sports  
Turf & Recreation  
Managers Association

[www.covermaster.net](http://www.covermaster.net)  
E-mail: [info@covermaster.net](mailto:info@covermaster.net)



CALL TOLL FREE 1-800-387-5808

COVERMASTER INC., 100 WESTMORE DR. 11-D, REXDALE, ON, M9V 5C3 TEL 416-745-1811 FAX 416-74-COVER (742-6837)

**STMA Headquarters**  
**1375 Rolling Hills Loop**  
**Council Bluffs, IA 51503-8552**

Return Service Requested

BULK RATE  
US POSTAGE  
PAID  
PERMIT #705  
OMAHA NE