

Meet Me in St. Louis!

When you think of St. Louis what comes to mind? The Gateway Arch, the Cardinals and Busch Stadium? Well, now there's something even better - the 2000 STMA Conference & Exhibition - which will be held in St. Louis, January 12th-16th at the Regal Riverfront Hotel, just across from the Arch.

Back by popular demand is our Chapter Officers Training Session on Tuesday, January 11th, from 10:00 A.M. - 5:00 P.M. If you are a Chapter Officer, or are forming or interested in forming, a Chapter - you don't want to miss this!



On Wednesday, we have our first Seminar on Wheels Tour - check out the President's Message for planned stops. We also are expanding on the success of the Category I Session from last year with special, optional Category Sessions for each individual category. These sessions will be held at the Regal Riverfront from 1:00 P.M. - 4 or 5:00 P.M. The Welcome Reception will be held Wednesday evening so you can mix and mingle with your friends - both old and new!

We've got an educational program that is just packed full of interesting information for everyone. In addition to the general sessions and our Round-Table discussions, we are adding specialized 2-hour Workshop Sessions on Friday, January 14th.

The Trade Show portion of the Conference will continue to be a two-day event with both a reception and luncheon in the booth area - giving you the extra opportunities to



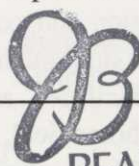
Busch Stadium - Home of the St. Louis Cardinals - See it for yourself on the Wednesday Seminar on Wheels Tour.

mix, mingle and get better acquainted with those fine people who supply the materials, services and equipment that help you, the sports turf manager, do your job better, faster and more efficiently.

We also will be holding our Raffle and Live & Silent Auctions with all proceeds going into the STMA Scholarship fund. If you have items that you'd like to donate, contact Tom Curran at 954/786-4013 - all donations are appreciated.

Sunday holds an optional non-sports related "area sights" tour of the Missouri Botanical Gardens, The St. Louis Zoo, Union Station and the Gateway Arch. And There's More - an optional "Fun" event on Saturday night.

Have we convinced you yet that St. Louis IS the place to be January 12-16, 2000? Don't be left out - make your plans NOW to join us there! Meet You in St. Louis!



Proud to Support STMA
BEARD
COLLECTION

It's about **TORO** productivity



SPORTS TURF MANAGER

Official Newsletter of the Sports Turf
Managers Association
1375 Rolling Hills Loop
Council Bluffs, IA 51503-8552
712/366-2669, 800/323-3875
(FAX) 712/366-9119
(e-mail) SportsTMgr@aol.com
(world wide web)
<http://www.aip.com/STMA>



Volume XVII Number 4
July/August 1999

OFFICERS

President

Stephen H. Guise
Marina Landscape, Inc.

President-Elect

Rich Moffitt
Saint Louis University

Commercial Vice President

Bob Curry
Covermaster Inc.

Secretary

L. Murray Cook
Ballpark Services, LLC

Treasurer

Bob Patt
Thurman Munson Memorial Stadium

BOARD MEMBERS

Tom Burns

Texas Rangers Baseball Club

Bob Campbell

University of Tennessee

Dr. Tony Koski

Colorado State University

Tim Moore

M-NCPPC, Wheaton Maint. Facility

Lynda Wightman

Hunter Industries

Immediate Past President

Mike Schiller

Rolling Meadows Park District

NATIONAL HEADQUARTERS

Executive Director

Steve Trusty

Support Staff

Suz Trusty

NEWSLETTER EDITOR

Stephanie Watts

Trusty & Associates

TECHNICAL EDITOR

Dr. Gil Landry, Jr.

The University of Georgia

Sports Turf Manager is a publication of Sports Turf Managers Association (STMA). It is published bi-monthly and is free to STMA members. Sports Turf Managers' goal is to promote the mission of the association by providing a channel for communication between the representatives of the board and its constituency. STMA is not responsible for the opinions expressed in this publication. Address changes, advertising, photographs, and editorial inquiries should be directed to the executive offices. © 1999 Sports Turf Managers Association. All Rights Reserved.

President's Message

What's Up?

by Steve Guise, President

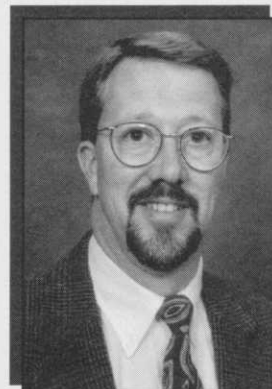
As I'm writing this column, I can't believe it's already July. Before you know it, it will be January 12th of the year 2000, and we'll be together again in St. Louis, Missouri, at the Regal Riverfront Hotel, just across from that famous Arch, for our 11th Annual Conference & Exhibition.

Our Conference Committee has developed an outstanding educational program, the exhibit details are all in place, and, as I write this, there are just a few more details to wrap up before the information packet can be finalized. By the time you read this - things should be nearly ready to mail to you.

If you're looking for information on the Conference prior to receiving that packet, including the details you might need to include in your year 2000 budget, please contact Headquarters. They'll get you whatever you need.

Now is the time to speak to your boss and/or your budgeting department to secure the time and the funds to allow you to attend. The education package put together by our Conference Education subcommittee is one of the best I've ever seen. And Rich Moffitt, our President-Elect, is looking forward to hosting all of you in his home city of St. Louis. One of the sites for our Wednesday, January 12th, Seminar on Wheels will be Rich's facility - Saint Louis University - where participants will see the results of major field reconstruction and construction projects. Other great stops on this tour are the Rams practice facilities and the St. Louis Cardinals home field, Busch Stadium.

Rich is gearing up to take the reins from me at the St. Louis Conference. I can tell you that Rich Moffitt will make a terrific STMA President. I have relied on Rich for many years to provide guidance on many issues that our Board of Directors have had to deal with. Rich's



Steve Guise

involvement on the Board was a major factor in the financial success of our organization, both when we were struggling to reach the break even point and over the past four years as we've developed a financial position to allow us to begin to develop more of the member benefits this organization is all about. I hope that you will all join me in supporting not only his nomination and election, but also his leadership as we continue to move forward into the new millennium.

Also looking forward, your Board of Directors met in June in Tampa, Florida, to visit potential facilities for the 2001 Conference. With the dates January 17 to 21, 2001, we'll hit the city just before the Super Bowl.

Last, but definitely not least, it's great to hear on TV or radio, read in print, or hear through local architects the positive comments on our members' work on the field. I was watching a Major League Baseball game last week and the announcers said something like, "Well, we don't have to worry about the condition of this field. The grounds crew always has their field ready for play." It's gratifying to know that STMA members in all our membership categories are being recognized for their knowledge and abilities in providing better and safer playing fields.

THE SPORTS TURF INDUSTRY (Part II)

by Dr. Coleman Y. Ward, Auburn University

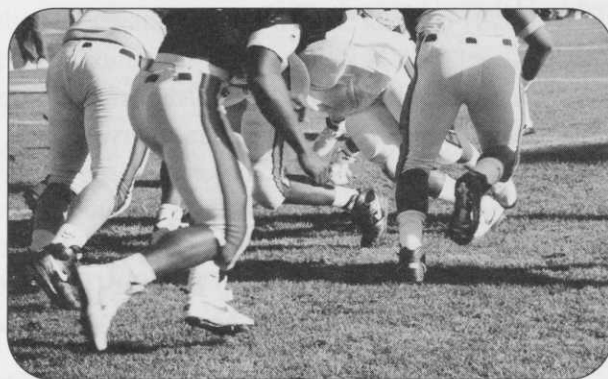
In my career spanning 40 years, I have yet to meet a sports turf manager who wasn't excited about and dedicated to his job. Today more than ever, sports turf managers are concerned professionals who strive to provide quality, safe playing fields. Many times their desire for excellence is limited by a lack of funding for adequate equipment, irrigation, soil amendments and pest control. In spite of these limitations, sports turf managers are appreciated and praised for the job they do in pro-

on TV looking like it was prepared for its first use. It is satisfying to finish the season with good solid turf despite the efforts of others to destroy what was created,"

Wayne Williams, Wake Forest University

NEW TURFGRASSES FOR SPORT TURF FIELDS

"Our future is in the hands of turfgrass breeders," a recent quote from Gary T. Grigg, Golf Course Superintendent, Royal Poinciana Golf Club, Naples, FL, is as true for sports turf managers as for golf course superintendents. No segment of the turf industry has seen more advancement in the past decade than has occurred in the development and release of new improved turf cultivars. Greater progress lies ahead as conventional plant breeders team-up with genetic engineers to splice genes through recombinant DNA techniques to create even better turf grass cultivars.



Today's University and Professional football players are larger than ever putting extra demands on turfgrasses.

Table I. Source of praise and criticism for the condition of playing field(s)

	Compliments come from	Criticism* comes from	
Most	Coaches	Coaches	Most
	Players	Press	
	Press	Owners	
	Parents	Athletic Directors	
	Peers	Players	
	Owners	Trainers	
Least	Fans	Self	Least

*Sports Turf Managers also reported criticism from STMA, outside groups and fans.

viding superior playing surfaces no matter what the sport is. A recent survey shows who compliments and criticizes sports managers for their efforts (Table 1).

Managers reported significantly more praise than criticism from all parties.

"Every coach is a turf expert" was one quote received in the survey. While such attitudes may cause sports turf managers consternation - it is best if coaches do have an understanding of turf quality, it makes for better communications between turf managers and users.

When sports turf managers were asked about the most rewarding aspect of their job some responses were memorable:

Table II. Factors cited most often as giving greatest job satisfaction

1. The opportunity to provide safe, quality turf
2. Appreciation by coaches, players and fans
3. Having a plan come together
4. Seeing fields hold up to heavy traffic
5. Receiving compliments from opposing players and coaches
6. Being outdoors

New warm season sports turf cultivars

In the last half of the decade of the 1990's, new seeded and vegetatively propagated cultivars of the Cynodon, Paspalum and Zoysia genera have been released for sports turf. Some examples are:

Bermudagrass (Cynodon spp) vegetatively propagated

Tifsport A new hybrid bermudagrass developed by Dr. Wayne Hanna, University of Georgia. A strong producer of stolons, good fall color, mole cricket resistance and superior cold tolerance are but a few of its attributes.

Seeded Bermudagrass

Cultivars Compared to Arizona Common
Jackpot Greater cold tolerance and finer texture

continued on page 4

Having a 300 pound line man say, "My knees feel so good on your turf,"
 Ken Mrock, Grounds Superintendent, Chicago Bears Football Club.

"My greatest satisfaction is when after 10 games, the field goes

The Sports Turf Industry

continued from page 3

Mirage	Greater cold tolerance
Princess	Much finer texture
Sultan	Better color and texture

Paspalum vaginatum

This new-comer is a low growing, vigorous tropical grass which has remarkable salt tolerance and good recuperative ability. Dr. R.R. Duncan, Turfgrass breeder, University of Georgia, is the leading developer of this species. Look for several new cultivars from his program and from commercial programs such as Southern Turf Nurseries (STN) of Woerner Group Resources. This August, an exhibition professional football game between the New Orleans Saints and Green Bay Packers will be played in the Super Dome, on "big roll sod" of STN's 'Salam' paspalum, which represents the first use of this grass for a sports event in the U.S.A. It was chosen for this event by Saints' players who preferred it in test plots compared to 'Tifway' bermudagrass.

Zoysiagrasses

Zoysiagrass cultivars such as 'Meyer', 'El Toro' and 'Jamur' are being used on golf course fairways and tees, While strongly advocated by some enthusiasts, the zoysiagrasses have yet to gain acceptance as a turfgrass for sports fields. These cultivars have great wear tolerance but lack acceptable recuperative capacity. Breeders are actively selecting for superior regrowth potential of the zoysiagrasses.



Well groomed Neyland Stadium, home of the National Championship football team.

Cool Season Grasses for Sports Turf

Cool season grasses are inferior in wear tolerance and recuperative potential as compared to bermudagrass for sports fields, however, bermudagrass is not suited to areas with severe winters. Public, and commercial plant breeders have recently developed many new cool season cultivars which have

improved color, drought, heat, disease and insect tolerances, all of which add up to superior turf for athletic fields. Almost all of these new cultivars can be established from seed. Several new cultivars of Kentucky bluegrass, the fine leaved fescues and tall fescue are released annually. Major improvements in Kentucky bluegrass and fine fescue cultivars include superior disease resistance and heat tolerance; for perennial ryegrass, greater heat and drought tolerance and persistence can be cited; the new tall fescue cultivars have greater tillering, hence are denser, mow cleaner and have greater heat and drought tolerance. Because of their regional adaptation, it is best to consult your state extension turf specialist for a list of the best adapted cool season cultivars for your area.

The Haves and Have Not

The status of sports turf facilities at the professional and collegiate level is light years ahead of most middle school, high school and municipal facilities. The basic reasons for this gap are the lack of funding and the greater number of events on each field. Two examples; case #1: I have a 13 year old grandson in Indianapolis, who has played organized soccer since age five. He is now on an all-star team. I recall watching him play on a compacted field of Kentucky bluegrass - ryegrass mowed about 4" high. Dandelion seeds floated like a snow storm, surprisingly no player inhaled the seeds. Case #2: my 11 year old grandson in Nashville, TN is an all-star baseball player. The fields on which he plays have highly compacted, rough surfaces, and weak turf. Rainfall exceeding 1/4" results in standing ponds of water on the base paths which causes cancellation of games. In both cases, volunteers, often ignorant of agronomics and player safety, struggle to deal with the playing conditions.

What's the solution? First is recognition by parents, school administrators and civic leaders of the risks of injury their children face playing under these unsafe conditions. Second, there is a need for municipalities and schools to provide funds to employ qualified turf managers who could greatly improve playability of the fields and safety of the players. Help may be on the way because turf management curricula at colleges and universities are placing more emphasis on sports field management. In addition, more students are being encouraged to do their internships under qualified sports turf managers.

A portion of the survey, reported here, asked sports turf managers and University turf teachers and researchers for their views on career opportunities for graduates in turf management. A summary of their responses is given in Table III.

continued on page 8

How Do You Do...?

The Question -- How Do You Reap the Benefits of an STMA Conference?

Answered by Mike Hebrard, Athletic Field Design

"After attending the 1999 Conference & Exhibition in Mesa, Arizona, I wondered what one can do to get more out of Conference attendance, or to help the STMA as a whole. I came up with the following list of what a good attendee could do to better themselves as well as help those involved with STMA."

- 1) Be on time for meetings and tours. If you get there about 15 minutes early, this will allow you to hook up with friends and new acquaintances so that you can sit together.
- 2) Try and sit with someone new on each leg of a tour or meeting. You'll be surprised at how much you have in common and the information that you can share.
- 3) Try to thank each speaker, and congratulate each award winner. This will make both of you feel special.
- 4) Stop at every exhibitors booth and at least say "hi." Sometimes their company sign doesn't really say what they do. Remember, they have a lot of money invested in being at the show and, if they feel they don't get enough traffic, they might not want to come back. They do talk to other exhibitors and have to report back to their parent company on whether or not it was a worthwhile show.
- 5) Try to bring a door prize, something from your school, business, parks department, etc, such as a hat or t-shirt. It's great fun to win a prize amongst your peers. Some of the professional stadium managers have been able to get some pretty neat items, such as autographed pictures and team related clothing.
- 6) Fill in all evaluation sheets and add comments if they apply. If you feel that the room conditions were poor, you'd like to hear a different slant on that topic, or even if your speaker was exceptional, write it down.
- 7) Don't be bashful - be social - join a group and get to know them. Some of the best things I have learned are after conference "formal" meeting times. When I brought my wife and son to Orlando two years ago, they were amazed at how many people I knew throughout the country. It gave my son a chance to ask Dale Getz from Notre Dame if the Irish really do paint their helmets for every football game. Conferences are **always** a great networking tool.
- 8) Bring plenty of business cards, I don't care how many I bring, I always seem to run out. If your employer or facility doesn't provide you any, try making your own on the home computer. They have some pretty neat formats.

9) Get your Conference registration in early and avoid the rush. The more our organization grows, the more last minute paperwork Headquarters needs to process.

10) Tell others who didn't make it what they missed and why they should go next year. I always try to have extra membership forms with me to hand out to other sports turf managers.

11) Don't leave anyone sitting by themselves. If you see a table with one person sitting there, go up and introduce yourself and ask if they mind if you join them. Sometimes neither person knows anyone else, or isn't sure how to start a conversation. Not everyone is like me, where if you ask me what time it is, I'll tell you how to build a watch. Remember, that's why we are there, to learn from each other.

And the list could go on and on. These are just my suggestions, I'm sure you have some ideas of your own. The important thing to remember is that it's YOUR responsibility to get the most out of your Conference experience.

Good luck to all and "Meet Me in St. Louie!"



*Memo to: The General Membership of the STMA
From: Kurt Nilsson, Membership Committee Chair*

As I travel to different sports facilities around the country, I ask the sports turf managers if they, or someone they know, would like to become a member of the STMA. After explaining our mission, and the benefits of membership, I am always rewarded with a resounding YES!

Every one of us knows at least one sports turf manager who is not yet an STMA member - a co-worker, a local park person, your child's little league groundskeeper. They all are candidates for membership and the more members we have, the better we can serve.

Since our inception, we have come far as a viable organization. These are truly exciting times for our industry. Won't you join me in spreading the STMA message to others and personally asking for the membership of those who may not have been asked.

Welcome New STMA Members

Ignacio Alamillo
Pepperdine University
Malibu, CA

Gordon Beezley
City of Brighton
Brighton, CO

Brown Sand, Inc.
Tim Smith
Lathrop, CA

Butler, Rosenbury & Part.
Frank Zanaboni, Jr.
Springfield, MO

Richard Caputo
City of Summit
Summit, NJ

Bill Cwynar
Piedmont U.S.D.
Piedmont, CA

H. Lee Faile, Jr.
Chester Nsy. & Landscape
Chester, SC

Lance Freeman
Colorado State University
Ft. Collins, CO

Dan Johns
Kidsports
KalisPELL, MT

Preston Johnson
U.S. Navy Athletics
Annapolis, MD

Rick Leach
Pepperdine University
Malibu, CA

Kevin McCann
Westford, MA

Edmund Milewski
Rutgers University
Succasunna, NJ

Stacy Nord
Ewing Irrigation Prod.
San Leandro, CA

Don Piana
City of Palo Alto
Palo Alto, CA

Dr. Tom Samples
University of Tennessee
Knoxville, TN

Mark Slavik
Terra Distribution
Pandora, OH

Bobby Alston
Memphis University School
Memphis, TN

Peter Betancourt
Pepperdine University
Malibu, CA

Dalton L. Brown
Student/Linda's Flower Fair
Troy, MI

Edward Bylica
City of Ft. Lauderdale
Ft. Lauderdale, FL

Gary Carsten
Town of Eaton
Eaton, CO

Daniel Davidson
Bellevue Baptist Church
Cordova, TN

Mike Farman
Farmload Distributors
Fresno, CA

Greg Garber
City of Cambridge
Cambridge, MA

Allen Johnson
Green Bay Packers
Green Bay, WI

Donna Kent
City of Birmingham
Birmingham, AL

Larry Lennert
PROFILE Products, LLC
Greenfield, WI

McGovern Sports Fields
Bud McGovern
Ft. Myers, FL

Greg Milosch
PBI Gordon
Toledo, OH

NovaGrass International
Richard L. Burke
Chattanooga, TN

Dennis F. Qualls
Bricktown Ballpark/Student
Oklahoma City, OK

Jon Schilling
Automatic Rain/Horizon
Sacramento, CA

Curt Sloan
Douglas Co. Parks
Castle Rock, CO

Art Alvarado
Hartnell Comm. College
Salinas, CA

Keith Bilisoly
Town of Frisco
Frisco, CO

Samantha Bungart
Student/WA State Univ.
Pullman, WA

Rusty Caldwell
City of Westminster
Westminster, CO

Lyle Chase
City of Council Bluffs
Council Bluffs, IA

Chris Davison
Auburn, CA

Mark Feist
American University
Washington, DC

Philip W. Hatcher
City of Knoxville
Knoxville, TN

Joe Johnson
U.S. Navy Athletics
Annapolis, MD

Jack Kirby
Paul VI High School
Fairfax, VA

Ed Maharrey
City of Bartlett
Bartlett, TN

Bob McKee
Snowline Joint U.S.D.
Phelan, CA

Moltan Company
Tom Quinley
Memphis, TN

Keith O'Neill
Enhanced Tech. Services
Pacheco, CA

Mike Ravel
United Hort. Supply
Fremont, CA

Martin Schmitt
St. Paul's School
Concord, NH

Neil Smart
City of Healdsburg
Healdsburg, CA

The Andersons
Dave Conover
Sylvania, OH

Jim Bogart
Turfgrass, Inc.
Rockford, MI

Michael Bush
Piedmont U.S.D.
Piedmont, CA

Michael Calsi
City of Pembroke Pines
Pembroke Pines, FL

Brian Cool
Univ. of Delaware
Newark, DE

Mitch Elliott
Mesa State College
Grand Junction, CO

Fielder's Choice, Inc.
Tom Worthen
Houston, TX

Ryan Jansen
City of Broomfield
Broomfield, CO

Kevin A. Johnson
Rain Bird Sales, Inc.
Azusa, CA

Charles Klafka
Douglas Co. Parks
Castle Rock, CO

Donn Mann
Rain Bird Sales, Inc.
Indianapolis, IN

Gregory Meeks
TLI-Poligrass International
Clearwater, FL

Steve Montoya
City of Broomfield
Broomfield, CO

Tim O'Shea
City of Folsom
Monson, MA

Ned Rich
Southern Athletic Fields
Columbia, TN

Randy Schoot
University of Denver
Denver, CO

Brad Snavelly
Farmload Distributors
Fresno, CA

Craig Badura
City of St. Paul
St. Paul, MN

Darrell Bradford
Sierra College
Cedar Ridge, CA

Edward Butler
City of Pembroke Pines
Pembroke Pines, FL

Anthony Camarena
Woodland School Dist.
Woodland, CA

Tony Cotter
City of Napoleon
Napoleon, OH

Steve Emerson
Hunter Industries, Inc.
Garden Valley, CA

Ron Fletcher
City of Brighton
Brighton, CO

Ernie Jenkins
Steamboat Springs Parks
Steamboat Springs, CO

Nathan Johnson
Grace Bible College
Wyoming, MI

Bob Klepperich
Midway Stadium
St. Paul, MN

Barry Margesson
Brentwood Parks & Rec.
Brentwood, CA

Tom Mesta
W.E.C.M.R.D.
Eagle, CO

Don Murray
Highlands Ranch Metro Dist.
Highlands Ranch, CO

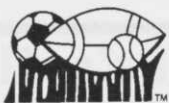
Steve Patrilla
Highlands Ranch Metro Dist.
Highlands Ranch, CO

Jim Romeo
City of Ft. Lauderdale
Ft. Lauderdale, FL

Matthew Selle
Student
Ypsilanti, MI

John Spahlinger
Foothills Parks & Rec.
Lakewood, CO

New members continued on page 13



Chapter Events

The Colorado Sports Turf Managers Association

The Colorado Chapter is planning an August event in Grand Junction, Colorado. Also on the planning schedule is a September 15th Fall Football and Soccer Seminar at Jackie Robinson Field of Lowry Air Force Base.

For information on the Colorado Chapter or any of these upcoming activities, log on to the Chapter's new Web site: www.cstma.org or call the CSTMA Chapter Hotline: (303) 346-8954.

The Iowa Sports Turf Managers Association

ISTMA will again participate in the ITI/IGCSA Benefit Golf Tournament. This year's event will be held at the Wakonda Club in Des Moines on August 30.

ISTMA members will gather for a tailgate party and then attend the ISU/Iowa football game in Ames on Saturday, September 11.

An ISTMA Fall Workshop will be held October 6th at the North Scott Community Schools in Eldridge, Iowa.

For information on the Iowa Chapter or upcoming activities, contact: Lori Westrum at The Turf Office at (515) 232-8222 (phone) or (515) 232-8228 (fax).

Wisconsin Sports Turf Managers Association

The Wisconsin Chapter will meet at the University of Wisconsin-La Crosse on September 14. A highlight of this event will be a field tour with sports field supervisor, Pete Bemis.

For more information on the Wisconsin Chapter or pending events, contact: Rich Riggs, R. H. Rettler & Associates, Inc. at (715) 341-2633.

The Great Lakes Sports Turf Managers Association (GLSTMA)

GLSTMA will hold a Fall Field Day from 9:00 AM to 3:00 PM on September 14th at Sylvania Pacesetter Park. This event will feature equipment manufacturers, turf product manufacturers and speakers.

GLSTMA has announced a \$250 scholarship program for students pursuing a career in turf. Contact (419) 885-1982 for application materials.

GLSTMA, along with Profile Products, will again sponsor Field of the Year Awards for facilities. Interested members can obtain application material by contacting (419) 885-1982 or at the web site.

For information on the GLSTMA Chapter or upcoming events, contact: Joe Zelinko at (800) 897-9714 or Boyd Montgomery at (419) 885-1982 or the chapter website <http://members.tripod.com/~glstma>.

Indiana Chapter: STMA

The Indiana Chapter is planning a September event.

More details will be announced soon.

For information on the Indiana Chapter or pending activities, contact: Terry Updike, B & B Fertilizer, at (219) 356-8424 or Pat Hickner at (800) 672-4273.

Keystone Athletic Field Managers Organization (KAFMO Chapter STMA)

The KAFMO Chapter will team up with Penn State Cooperative Extension to host four one-day, on-field clinics in western Pennsylvania this fall. Dates and locations are as follows: September 20 at Allegheny College in Meadville; September 21 in the Cranberry, PA, area; September 22 in the Washington, PA, area; and September 23 in the Johnston, Altoona area. Specific sites for these clinics will be announced soon.

Each clinic will open with registration at 9:30 AM and wrap up at 2:30 PM. Topics to be addressed are: Communications between ADs, Coaches, Associations and Parents; Development of a Turf Maintenance Program; Managing Volunteers; Managing Turf Areas of an Athletic Field; Fall Renovation Tips; and Post Game Field Tips.

For information on the KAFMO Chapter STMA or upcoming events, contact: Dan Douglas, Reading Phillies Baseball Club, at (610) 375-8469, extension 212.

Florida Chapter #1: STMA

The Florida Chapter will hold its 8th Annual Turf Rodeo on September 22nd at Lake Ida Park in Delray. Educational sessions will be offered, as well as events such as Bobcat Basketball and Gator Rally.

On November 19th, the Chapter will hold a meeting in Ft. Lauderdale with the focus: "Sports Turf Equipment Demonstrations for Maintaining Athletic Fields."

For information on the Florida Chapter or pending activities, contact: John Mascaro at (954) 341-3115.

The Mid-Atlantic Field Managers Organization (MAFMO Chapter STMA)

MAFMO will hold a "Design and Spec" Workshop in Annapolis, Maryland, on October 8th. Don Campbell of French & Associates,

continued on page 11

OFFICIAL STMA CHAPTER SPONSORS

Gold Sponsors

 **NOVARTIS**



Silver Sponsors

Alpine Services, Inc.
PREMIUM SPORTS FIELDS

Hunter
The Irrigation Innovators

The Sports Turf Industry

continued from page 4

Table III. Career Opportunities for Turf School Graduates in the 21st Century
Predicted Job Availability in the Industry

Survey Respondents	Turf Sod Production		Golf Course Superintendents		Sports Field Managers		Sales Positions in Turf Industry	
	Increase	Decrease	Increase	Decrease	Increase	Decrease	Increase	Decrease
Sports Turf Managers	-	-	-	-	90% * expect some increase	10% say fewer jobs	-	-
University Teachers/Researchers	50% increase in production	None	40%	None	60% increase in jobs	None	50% increase in service oriented jobs	None

**Actually predicted 27% increase in jobs in next decade; range was 5% to 100% increase.*

As you can see, university turf management teachers and researchers are more optimistic about job opportunities in the turf industry than are turf professionals. Educators project more opportunities in sports turf than in other segments of the industry.

Consultation

It is important for turf managers to solicit the views of coaches and players about playing conditions. They can tell you whether your fields are better or not as good as competing high schools, universities or professional stadiums. Its up to you to assess whether the views of coaches are realistic. Coaches are often biased in their views about turfgrass species, height of mowing, and type of clay used on the skinned infield and the pitching mound. For this reason, it is often advisable to bring in a consultant or peer to discuss agronomics with your coach(es). Table IV shows where the turf managers surveyed, turn for assistance with turf problems.

Table IV. Where Sports Turf Managers Turn for Consultation on Problems

1st	Other turf managers (50%)
2nd	University specialists (42%)
3rd	Sales representatives (21 %)
4th	Professional consultants (13%)

What's Ahead for Sports Turf

The future for sports turf managers is bright but not without a nationwide effort for more recognition. The need for improved playability and safer athletic fields must continuously be emphasized. Since 95% or more of sports fields are built on native soils, much more research must be directed toward their improvement. Too much of the

research budget at universities is being spent on solving problems of sand based rootzones.

Turf management is a relatively new science and many questions remain to be answered. With the new technologies available to research scientists, the next decade should provide sports turf managers with better guidelines for management of athletic fields.

Turf managers were asked to rate the importance of 10 potential research breakthroughs in turf management by the year 2020. Here is how they ranked the proposed breakthroughs:

- (1) Better techniques for sports field rootzone construction
- (2) Fungicides with longer span of efficacy
- (3) Positive selective control of *Poa annua*
- (4) Good biological control of turf pests (diseases, insects and weeds)
- (5) Seeded bermudagrass cultivars equal or superior in quality to vegetatively propagated cultivars
- (6) Superior growth regulators for turfgrasses
- (7) Turfgrass cultivars tolerant of glyphosate and/or other non-selective herbicides.
- (8) Positive, safe control of parasitic nematodes
- (9) An effective soil fumigant to replace methyl bromide
- (10) Practical electric and/or other non-combustion powered mowers

In summary, turf managers of the future would do well to emulate the philosophy of David Mellor, Assistant Director of Grounds for the Milwaukee Brewers. David, a 4-year graduate of Ohio State feels that, "a formal education combined with experience will not only open doors for future jobs, but also help make our industry a more professional and respected occupation."



Doc's Dugout - An Inning from our Past & Present

by Dr. Kent Kurtz, STMA Historian

In Search of Our Past

During late June and early July, I made a connection with our past by travelling to College Park, Maryland, to visit Fred Grau Jr. and then to Milwaukee, Wisconsin, to visit Bud Gill. These are the sons of Dr. Fred Grau and Harry Gill, STMA's early leaders.

Fred Jr. is the president of Grasslyn, a company located in State College, Pa., founded by his father after discovering by chance a plant he named Penngift crownvetch in 1935. Penngift crownvetch is a legume sold by Grasslyn that controls erosion along thousands of acres of highways in the USA. Bud Gill, the eldest son of Harry Gill, operates a foster parent home in Milwaukee, Wisconsin. Both of these gentlemen are willing to share pictures, articles and information with me about their famous fathers so we can preserve STMA's past and history. I found this article written by Dr. Fred Grau for an STMA presentation he made in the 1980's which he called: "Let's Understand Each Other"

A father said to his son who was contemplating a trip, "before you go anywhere first find out where you are!" Life is a one-way trip. At all times we should know where we are, where we've been and where we are going. Don't be like that crazy bird that flies back wards. He doesn't give a damn where he's going or he's crazy to see where he's been.

Knowing where we are is equivalent to understanding ourselves - who we are, where we've been and where we are going. Before we can truly understand our relationship to those around us and with whom we work and play we must first understand ourselves. Take stock!

You have a job! It is a good one! It allows one to give family security and a good life. I am a member of an organization that keeps all members informed of things that can, if heeded, help me better my posi-

tion. I contribute articles to the organizations' official publication which are sometimes published. That gives me a feeling of satisfaction that maybe, in sharing that which I know, someone else may have been helped. I try to give more than I get.

Do I fully understand my own organization? I'm not sure. I guess to fully understand my organization I'll have to become more involved. There are other groups that interact with my organization. In fact, in turfgrass there

continued on page 15



F I V E
GREAT REASONS WHY
YOU SHOULD CONSIDER
BULL'S EYE Bermuda
FOR YOUR NEXT
PROJECT.

- Virtually No Seedheads
- Good Shade Tolerance
- Deep Blue-Green Color
- Medium-Wide Blade For Texture Contrast
- Can Be Mowed With Rotary or Reel



WEST COAST
TURF
GROWERS AND INSTALLERS OF
PREMIUM QUALITY SOD AND STOLONS

www.westcoastturf.com 760/360-5464 800/447-1840 FAX: 760/360-5616

Board Meeting Report

On June 18 and 19, 1999, your Board of Directors met in Tampa, Florida. This location was chosen so the Board could check out proposed facilities since Tampa was the top contender among potential Conference sites for the STMA 2001 Conference. The meeting included tours of two possible headquarters hotels and the city's Convention Center. The Board voted on their preferred facilities contingent on space availability. Since then, Executive Director Steve Trusty has negotiated with the facilities and finalized contract details. STMA will hold its 2001 Conference in Tampa, January 17 - 21, just prior to the 2001 Super Bowl.

The Board approved the minutes of the March 12 - 13 Board Meeting, the Financial Reports for the period ending May 21, 1999, and the Check Disbursement Listing. The Budget for the 2000 Conference also was reviewed and approved.

The 2000 Conference Education Committee presented the proposed program for Board review. As noted in the Headquarters Report, the second annual Chapter Officers Training Session will take place on January 11th and optional Category Sessions will be offered on the afternoon of January 12th. Along with the general and breakout sessions, and round-table discussions, the Committee has incorporated one afternoon of workshops

into the program. The Conference Exhibits Committee and the Awards Committee also presented their Conference plans. Another new feature approved for the 2000 Conference will be holding the Live Auction adjacent to the trade show on Thursday evening at the end of that day's trade show hours.

Another major issue was Board review, discussion and approval in principle of recommendations on potential Bylaws changes as suggested by the Bylaws committee. These recommendations currently are under review by the attorney to confirm legal requirements are met in the wording of the Bylaws before their presentation to the membership for ratification. (*See the Headquarters Report for more details.*) The Board also reviewed and approved materials as submitted by the Certification Committee. (*See Certification Committee Report for more details.*)

Among other key items addressed by the Board were the recommendation of the Strategic Planning Committee. After discussion, the Board voiced its support of the Strategic Planning program, instructed the Committee to move forward, and asked them to readdress and redefine specific parts of their recommendations.

The next Board Meeting will be held October 22 - 24, 1999 in Tennessee.



RainBuster Polytarps



- Black/White reversibles for the ULTIMATE A-L-L SEASON turf protection!
- Lightweight AND Economical!
- Sizes from Golf Greens to Soccer Fields.

Complements our complete line of vinyl covers, patented zipper systems, geotextiles, grids and more! Call for your FREE BUYER'S GUIDE now.

1-800-621-0146 TOLL FREE

M. PUTTERMAN & COMPANY, INC.

4834 South Oakley • Chicago, Illinois 60609
773-927-4120 (In Illinois)



1926 Acton Hwy • Granbury, TX 76049
1-888-NEW GRASS
639-4727

GRASS

Ours **IS** Greener
On Your Side Of
The Fence!

SAND BASED
SOD

BAyr Root
Turf

42" Big Roll
SOD

Products & Services You've Trusted
For More Than **25** Years!!

Chapter Events

continued from page 7

Columbus, Georgia, and Paul Zwaska, Head Groundskeeper for the Baltimore Orioles at Camden Yards, will be featured speakers.

For information on the MAFMO Chapter or pending activities, contact the Hotline: (410) 290-5652.

The North Texas Sports Turf Managers Association

The North Texas Chapter is planning a meeting for September 2nd. Details will be announced soon.

For information on the North Texas Chapter or pending activities, contact: Rene Asprion, Diamond Pro, at (800) 228-2987 or Tom Welch, CSM, Central Garden and Pet, at (800) 788-9581, or check the website: www.nstma.org.

The Michigan Sports Turf Managers Association

For information on the Chapter or pending events, contact: Rick Jurries, West Ottawa Public Schools, at (616) 395-2364.

Midwest Chapter: STMA

For information on the Midwest Chapter or pending activities, call: The Chapter Hotline (847) 622-3517.

The Mid-South Chapter STMA

For information on the Mid-South Chapter or upcoming events, contact: Jim Calhoun at (901) 755-1305 or Robert Bodi at (901) 383-2414.

Minnesota Chapter:STMA

For information on the Minnesota Chapter or upcoming events, contact: Connie Rudolph at (651) 646-1679.

The Northern California Chapter of the Sports Turf Managers Association

For information on the Nor-Cal STMA Chapter or pending activities, contact: Janet Gift at 530/758-4200.

Southern California Chapter:STMA

For information on the Southern California Chapter or pending activities, contact: The Chapter Hotline: (1-888) 578-STMA (toll free in Southern California).

Tennessee Valley Sports Turf Managers Association

For information on the TVSTMA Chapter or upcoming events, contact: Tom McAfee, Nashville Sounds, at 615/242-4371 or Bob Hogan at 888/224-6426.

Chapters On The Grow

Arizona - The Arizona Sports Turf Managers join forces with the Arizona Parks and Recreation Association for a Workshop to be held on September 8 at the Doubletree Resort. The program opens at 8:15 AM with a presentation by Dr. Tony Koski of Colorado State University on "Grounds Maintenance - How We Affect Playability." Next, Dr. Jack Handy of Dow Agri Sciences addresses, "The How and Why of Successful Preemergent Chemicals." Then Dr. Dean Mosdell of Novartis Crop Protection, presents, "Fertility and Fertilizer Types;" Dr. Chip Howard of Turf Science Inc. addresses, "Problems Facing

the Grounds Manager Today and into the Millennium;" and Dr. Tony Koski wraps up the morning session with "Is That Turf Product Real or Snake Oil?" Lunch will be held in the Exhibit Hall, giving attendees the opportunity to visit with vendors. Grant Trenbeath, Head Groundskeeper for the Arizona Diamondbacks Bank One Ballpark, addresses, "The Daily Challenges At A Major League Ballpark." Next, Dr. David Kopec of the University of Arizona Karsten Turf Facility presents "Successful Overseeding Preparation in the Southwest." The Annual Meeting of the Sports Turf Managers Association of Arizona will be held from 3:30 to 4:30 PM in conjunction with this event.

For information on upcoming events, contact: Bill Murphy, City of Scottsdale Parks & Recreation Department, at (602) 312-7954, or Kris Kircher, City of Chandler Parks & Recreation Department at (602) 786-2728.

A new Chapter is taking shape in the **Kansas City Missouri - Kansas area**. For more information contact: Trevor Vance at 816/504-4271; John Cundiff at 816/525-7600; Bill Tritt at 816/941-4424; Jody Gill at 913/681-4121; Gary Custis at 816/468-6215; or Jay Sutton at 816/795-8873.

Nevada - For information on the forming Nevada Chapter of STMA or upcoming events, contact: Ibsen Dow at (702) 649-1551 or Alan Paulson, Clark County School District, at (702) 799-8724.

A Falcon rotor's performance begins when the curtain comes down.

The Rain Bird Falcon® rotor's "Rain Curtain"™ nozzle delivers even coverage and green turf.

Dry spots appear when water is unevenly distributed throughout a rotor's spray pattern. You could try watering longer, or you could try Rain Bird's Falcon rotor. The Falcon rotor covers turf evenly so dry spots disappear and turf looks greener—with less water and in less time.

Rain Bird offers a full line of Falcon rotors for every application, including sports fields, cemeteries, schools and parks. For details on the Falcon rotor and the complete line of Rain Bird products, call **1-800-458-3005**.



The Rain Bird Falcon rotor offers better performance in real-world conditions.

RAIN BIRD®

Rain Bird Sales, Inc. 4261 S. Country Club Road, Tucson, AZ 85714 USA

Headquarters Report

by Steve Trusty, Executive Director

Headquarters is gearing up for several projects that are in the works for an improved STMA. The Certification Committee has been hard at work and if we continue on the current pace, you should be introduced to the first Certified Sports Field Managers (CSFM) at the Conference in St. Louis. Plans are also underway to provide a test site on Sunday morning (January 16) in St. Louis for those who are ready for testing at that time. Look for full details on the certification program in September.

Speaking of St. Louis in January, your Conference Committee has just about finalized the program. The informational materials are being designed and put together and watch your mail for these in August. Be sure you make plans to be in St. Louis, January 12 to 16. If you are a Chapter Officer or have an interest in starting a Chapter in your area, plan to arrive in St. Louis the evening of the 10th or early morning of the 11th to participate in the Second Annual Chapter Officers Training Session. Committee Chair, Abby McNeal, and her committee are putting together another great program to help Chapter Officers better

understand what they can and should do to provide better programming for growing chapters.

On Wednesday, January 12th, there will be individual Category Member meetings. Category I tried this as an experiment last Conference and the concept is being expanded to all Categories. The get-togethers will be less formal, but the Board Members from each Category are developing their own plans to provide a worthwhile forum for the members of their Category. The idea is for people facing similar challenges, due to the type of facility they work with, having the opportunity to talk over common problems and help each other with some solutions. You also will have the opportunity to visit with your Board Representative about ways the STMA can be of even greater service to you.

Speaking of Categories, your board voted at the June Board Meeting to recommend to the membership a Bylaws change that would create a new Membership Category. Presently, Category III is made up of those Sports Turf Managers representing schools other than 4-year Colleges along with extension agents, teachers and researchers. It is the recommendation of the Bylaws and Membership Committees and the Board that a new category be created to include those in Extension, teaching and research and that Category III include only Sports Turf Managers with schools other than 4-year Colleges. Part of the reason for this change is to allow both of these constituencies a voice on the Board. Another reason is to be able to provide Commercial Members a more detailed breakdown of membership. The Bylaws Committee and the Board are also suggesting several minor changes in the Bylaws for clarification and more technical accuracy. As soon as legal counsel has gone over the Board recommendations and provided the appropriate "legalese," the changes will be sent out to all members for ratification.

Speaking of mail, please let headquarters know if you change your address, phone or fax number. Each month we receive newsletters or other mailings back with corrections and postage due because people have moved and haven't notified us. The extra postage can add up, but more importantly, members' mail is being delayed because we haven't received your updated information. Please help us and yourself by passing along new information as soon as you have it.

Until next issue, may your challenges be no greater than you can handle and may those around you appreciate your worth.

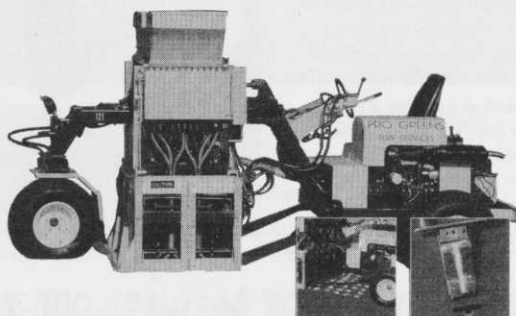


ProGreens

The #1 Turf Service Specialist

DRILL & FILL AERIFIER

- ✓ Penetrates Hard Pan
- ✓ Changes Soil Profile
- ✓ Increases Root Depth
- ✓ Relieves Compaction & Allows Better Percolation For Soccer & Turf Fields



Call To Schedule Our Service
1-800-639-7731

Welcome New STMA Members

continued from page 2

Joel Sportel
Kalamazoo College
Kalamazoo, MI

David Thompson
City of Bartlett
Bartlett, TN

Cindy Unger
Jupiter Stadium, Ltd.
Jupiter, FL

Welbourn Associates
Robert Welbourn
Graton, CA

Tim Stiger
Oklahoma University
Chickasha, OK

Jeff Thompson
Athletic Field Svcs., Inc.
Oregon, OH

Terry Van Rhee
Holland Public Schools
Holland, MI

Tom Whitmore
City of Rifle
Rifle, CO

Jerry Stratton
Sand Channel Greens, Inc.
Pebble Beach, CA

TLI-Poligras International
Charles A. Meeks
Clearwater, FL

Walter Ventura
Pepperdine University
Malibu, CA

Bill Wright
City of Farmington Hills
Farmington Hills, MI

Gary Tewmeyer
United Hort. Supply
Federal Heights, CO

Sean Tropeano
City of Pembroke Pines
Pembroke Pines, FL

Brad Vermeer
City of Sioux Center
Sioux Center, IA

John R. Wright, Jr.
Seattle, WA

Rob Thames
Commerce City Parks & Rec.
Commerce City, CO

Jeff Turner
Oil-Dri Corporation
Chicago, IL

Robert Ward
City of Palo Alto
Palo Alto, CA

Editor's note: Due to a computer error, some of the members listed in this issue should have been listed in previous issues of the newsletter. We apologize for the error and we welcome ALL of you to the STMA.

Members on the Move

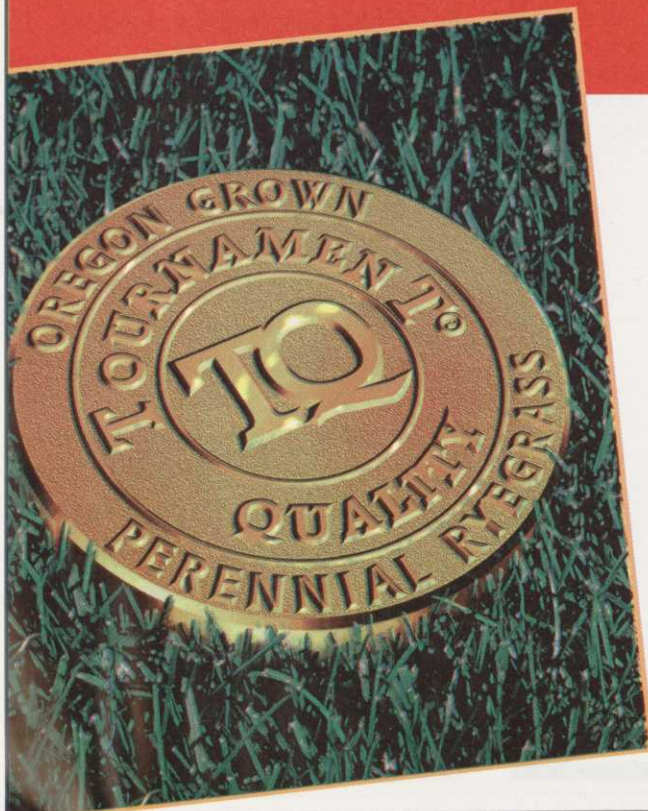
Marty Kaufman, formerly with the Carolina Panthers, is now the Assistant Groundskeeper with the Tennessee Titans. Marty can be reached at 615/673-1574.

Chris Conradson, former Turfgrass Manager at the University of Colorado, is now Building & Grounds Superintendent at Faith Evangelical Free Church. You can reach Chris at 970/226-2095.

Congratulations guys!

If you, or someone you know, has changed positions, let us know so we can get the word out.

The new quality benchmark for improved varieties of turf type perennial ryegrass



Tournament® Quality

As a professional in the turfgrass business, you need to be aware of the new professional measurement of quality for turf type perennial ryegrass seed. The new standard is Tournament® Quality.

Blue Tag Certified seed, once thought to be the best quality assurance, can contain *Poa annua* and coarse grass crop seed. Tournament® Quality perennial ryegrass does not allow these contaminants in the standard seed test.

For buyers and sellers alike, the race is on for high quality Oregon produced turf type perennial ryegrass. Don't be caught with potentially contaminated seed – insist on seed that meets Tournament® Quality standards labeled with the TQ mark.

PRBA

Perennial Ryegrass Bargaining Association
Post Office Box 3228 • Salem, Oregon 97302



Certification Committee Report

After over two years of concentrated effort, we're almost there.

The Certification Committee met on April 16 and 17, 1999 in Chicago. During that meeting several revisions and updates were made to the Certified Sports Field Manager (CSFM) Competency Outline, the CSFM Competency List, the CSFM Fee Schedule, the CSFM Industry Service Points and the Resource List for the Sports Turf Manager.

The revisions made at this meeting were included in master copies sent to the committee for further review. Following this review, final changes were made and these materials were submitted to the STMA Board for review prior to the June 18 and 19 Board

Meeting. The STMA Board discussed the items submitted for their review and voted to accept them as submitted. These materials will become part of the Certification Packet which will be sent to all those considering certification.

The Board also ratified the Certification Committee's recommendations on the issue of who can be certified, and some minor wording changes in the CSFM Acceptance and Rejection letters, the CSFM Application Form, the CSFM Education Requirements Worksheet, the list of CSFM forms needed, and the format of the Certification Test and the recommended testing procedures.

On June 25 and 26, 1999, the Certification Committee again met in Chicago. On the 25th, they reviewed

portions of the Credentialing Booklet that will become part of the Certification Packet and made recommendations for revisions that will again be reviewed before going to the STMA Board for review. They also discussed components of the CEU and qualification point criteria and reviewed and expanded the projected internal and external promotion venues. The main focus on the 25th was refining the procedures for the most effective evaluation of the draft test.

On the 26th, members of the committee and several individuals selected from the Chicago area "tested" a draft of the CSFM Certification Test. This was NOT a testing of the individuals, but rather an opportunity to take the draft test under simulated testing conditions and then to evaluate the test and the individual questions as to their content, clarity, acuteness, fairness, structure, and their relevance to the competencies and to sports field management.

The Certification Test will undergo one more review prior to the finalization of its multiple versions. In the meantime, the Certification Committee and STMA Headquarters are preparing for STMA Board review the remainder of the forms that will be included in the Certification Packet. Depending on the timing of these processes and the development and printing timetables of the final versions, these packets will be ready to send out in late summer or early fall. Testing will become available at approved proctored sites following the review and verification of the qualifying level of combined education and experience points of each applicant.

The first group testing is planned for Sunday, January 16, 2000, in conjunction with STMA's 11th Annual Conference & Exhibition in St. Louis, Missouri.



A Variety of Reasons to Pick Pickseed

Turf-Type Perennial Ryegrass

Turf-Type Tall Fescue

Fine Fescue

Kentucky Bluegrass

Poa Trivialis

Creeping Bentgrass

PICKSEED®

good things growing...

P.O. Box 888 • Tangent, Oregon • 97389

Phone: (541) 926-8886

Fax: (541) 928-1599

Doc's Dugout

continued from page 9

is almost complete interlocking of many interests. Before I can understand how these other segments affect me and my parent group, I have to fully understand my own organization.

Sports Turf is the most abused and neglected area in the turfgrass industry. Now it becomes essential for the needs of sports turf to be understood by everyone to make fields safer and the concept understood by everyone. Soil, grass and those who manage it have a common denominator so that each can communicate and help one another. "Get Involved; But Above All, Get Understanding." Like the original 13 colonies, "If we don't hang together, we'll hang separately." The challenge is to get together and stay together.



CYGNET TURF

BEEN THERE.....

DONE IT.....



JACK KENT COOKE STADIUM • WASHINGTON REDSKINS
 FOXBORO STADIUM • NEW ENGLAND PATRIOTS
 ARROWHEAD STADIUM • KANSAS CITY CHIEFS
 ALLTEL STADIUM • JACKSONVILLE JAGUARS
 ERICSSON STADIUM • CAROLINA PANTHERS
 SOLDIER FIELD • CHICAGO BEARS
 CLEVELAND STADIUM • CLEVELAND BROWNS
 JOE ROBBIE STADIUM • MIAMI DOLPHINS
 JACOBS FIELD • CLEVELAND INDIANS
 BUSCH STADIUM • ST. LOUIS CARDINALS
 KAUFFMAN STADIUM • KANSAS CITY ROYALS
 RAYMOND JAMES STADIUM • TAMPA BAY BUCCANEERS
 BALTIMORE RAVENS TRAINING FACILITY
 PHILADELPHIA EAGLES TRAINING FACILITY
 ST. LOUIS RAMS TRAINING FACILITY
 OHIO STATE
 UNIVERSITY OF TOLEDO
 UNIVERSITY OF MICHIGAN
 UNIVERSITY OF IOWA
 BOWLING GREEN STATE UNIVERSITY
 WESTERN MICHIGAN UNIVERSITY
 OHIO UNIVERSITY
 WESTERN ILLINOIS UNIVERSITY
 COLUMBUS CREW

Whether it's to strip a field, or install a field using our turf or yours, CYGNET TURF is able to perform under all kinds of conditions and is able to respond to most emergencies. Our patented equipment is able to cut and install from very thin, to very thick turf. So, when you are ready to install....give CYGNET a call!

CYGNET TURF

4711 Insley Road
 North Baltimore, Ohio 45872
 Phone: (419) 354-1112 • Farm (419) 655-2020
 Fax: (419) 352-1244

YOUR "ONE-STOP SOURCE" FOR AMERICA'S LEADING BASEBALL SURFACES & SUPPLIES



THE PROFESSIONAL'S CHOICE
 ... SINCE 1922

USED BY OVER 100 PRO TEAMS,
 OVER 500 COLLEGES, PLUS THOUSANDS
 OF TOWNS & SCHOOLS WORLDWIDE.
 SPECIAL MIXES FOR INFIELDS,
 PITCHER'S MOUNDS & HOME PLATE AREAS.

RED WARNING TRACKS

CONDITIONERS TO IMPROVE
 LOCAL INFELD MATERIALS:

IF TOO HARD AND POORLY DRAINING!



THE REDDER, LESS DUSTY, MORE UNIFORM
SOIL CONDITIONER & DRYING AGENT
 "SUPER-RED" FOR INFIELDS
 "SUPER-GREEN" FOR TURF
 THAT MORE PRO TEAMS ARE USING
 TO IMPROVE AERATION & DRAINAGE
 YET RETAIN MOISTURE IN HOT WEATHER!

IF TOO SOFT & DUSTY!

STABILIZER®

FOR FIRM, YET RESILIENT, PLAYING SURFACES

TO QUICKLY DRY INFIELDS!



The Original & Most Absorbent
DIAMOND-DRY.

TO REMOVE STANDING WATER!

SUPER SOPPER®
 WATER REMOVAL MACHINES
 & THE DIAMOND PUMP™

PLUS LEADING BASEBALL SUPPLIES
 AT THE BEST PRICES NATIONWIDE!

HOLLYWOOD® BASES
 FIELD MARKING MACHINES
 TAMPERS • DRAG MATS • RAKES
 SAFETY FENCE • WINDSCREEN • RAIL PADS
 BATTING PRACTICE COVERS • RAIN COVERS
 PERMANENT FOUL LINES & MUCH MORE!

OVER 200 INFELD PRODUCTS
 FREE INSTRUCTIONAL BROCHURES
 DISTRIBUTION CENTERS NATIONWIDE!

800-247-BEAM

908-637-4191 / FAX 908-637-8421
 PARTAC PEAT CORPORATION
 KELSEY PARK, GREAT MEADOWS, NJ 07838

INTRODUCING

REGIONAL INFELD MIXES
 Blended for Your State and Climate!

EVERGREEN

THE PROVEN TURF GROWTH BLANKET

- Earlier spring green-up
- Faster seed germination
- Deeper root development
- Delays dormancy in fall
- Ideal winter blanket
- Best for quick turf repairs
- Available in any size
- Longest lasting - 7 year warranty



**CALL TOLL FREE 1-800-387-5808
FOR SAMPLES AND LITERATURE**

**COVERMASTER™
COVERMASTER
COVERMASTER**
MASTERS IN THE ART OF SPORTS SURFACE COVERS

**30
YEARS**
1969-1999

MEMBER
Sports
Turf
Managers Association

Visit our Website!

WEB: www.covermaster.net
E-MAIL: info@covermaster.net

Turf Management Made Easier!



Easy to install



Anchor pegs supplied



Deeper root development



Any size cover

COVERMASTER INC., 100 WESTMORE DR., 11-D, REXDALE, ON, M9V 5C3 TEL 416-745-1811 FAX 416-74-COVER (742-6837)

STMA Headquarters
1375 Rolling Hills Loop
Council Bluffs, IA 51503-8552

BULK RATE
US POSTAGE
PAID
PERMIT #705
OMAHA NE

Return Service Requested